

MIL-S-17000/5A(SH)
2 May 1983
SUPERSEDING
MIL-S-17000/5(SH)
30 April 1980

MILITARY SPECIFICATION SHEET

Ⓐ

SWITCHING EQUIPMENT, COMBAT SYSTEM, COMMAND AND CONTROL,
FIRE CONTROL AND INTERIOR COMMUNICATION SWITCHBOARD,
SURFACE SHIP, DECK-MOUNTED, TWO SEPARATE SECTIONS
(TERMINAL BOARD AND PLUG CONNECTED),
TYPE VI

This specification sheet is approved for use by the Naval Sea Systems Command, Department of the Navy, and is available for use by all Departments and Agencies of the Department of Defense.

The complete requirements for acquiring the switchboard described herein shall consist of this document and the latest issue of MIL-S-17000.

REQUIREMENTS :

Switchboard section arrangement: Each switchboard front and rear section shall be arranged as shown on figure 1. The front section shall provide space for 36 panel-mounted assemblies. The back section shall contain six modules.

Size: Size of the switchboard sections shall be as shown on figure 1.

Mounting: Switchboard enclosure shall be provided with mounting bolt clearance holes as shown on figure 1.

Preparing activity:
Navy - SH
(Project 1290-N381)

Ⓐ denotes changes.

FSC 1290

MIL-S-17000/5A(SH)

Dimensions are in inches.
 Dimensions are given for general information
 are based upon 1 inch = 25.4 mm. Dimensions in []
 are in millimeters.
 Tolerances shall be XX ±.03
 unless otherwise specified, and angles ± 30°.
 NO EXTERIOR SURFACES OF ENCLOSURE SHALL BE PAINTED
 UNLESS WITH REQUIREMENTS OF MIL-S-17000.
 SHALL BE IN ACCORDANCE WITH MIL-S-17000.
 A LANYARD SHALL BE INSTALLED TO LIMIT
 90° ± 2° OPEN POSITION.
 ALL CHARACTERISTIC SYMBOLS USED ON THIS FIGURE
 D IN ANSI Y14.8.

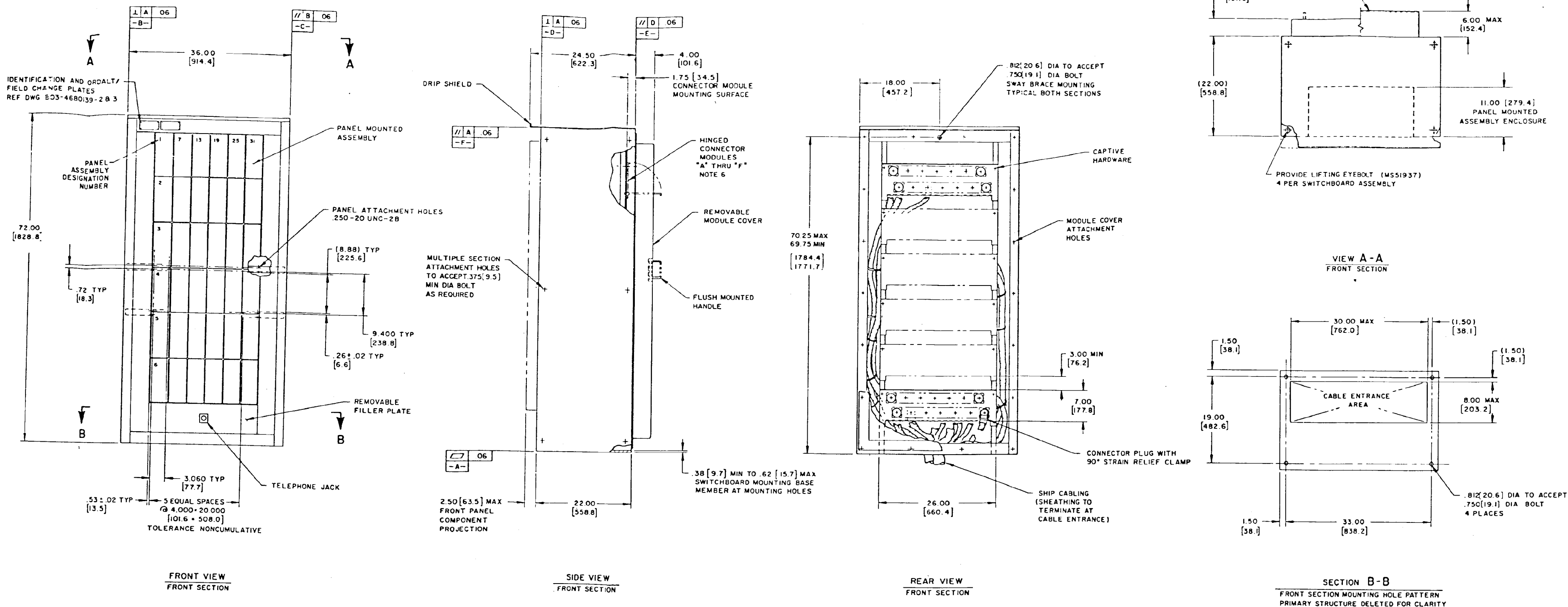
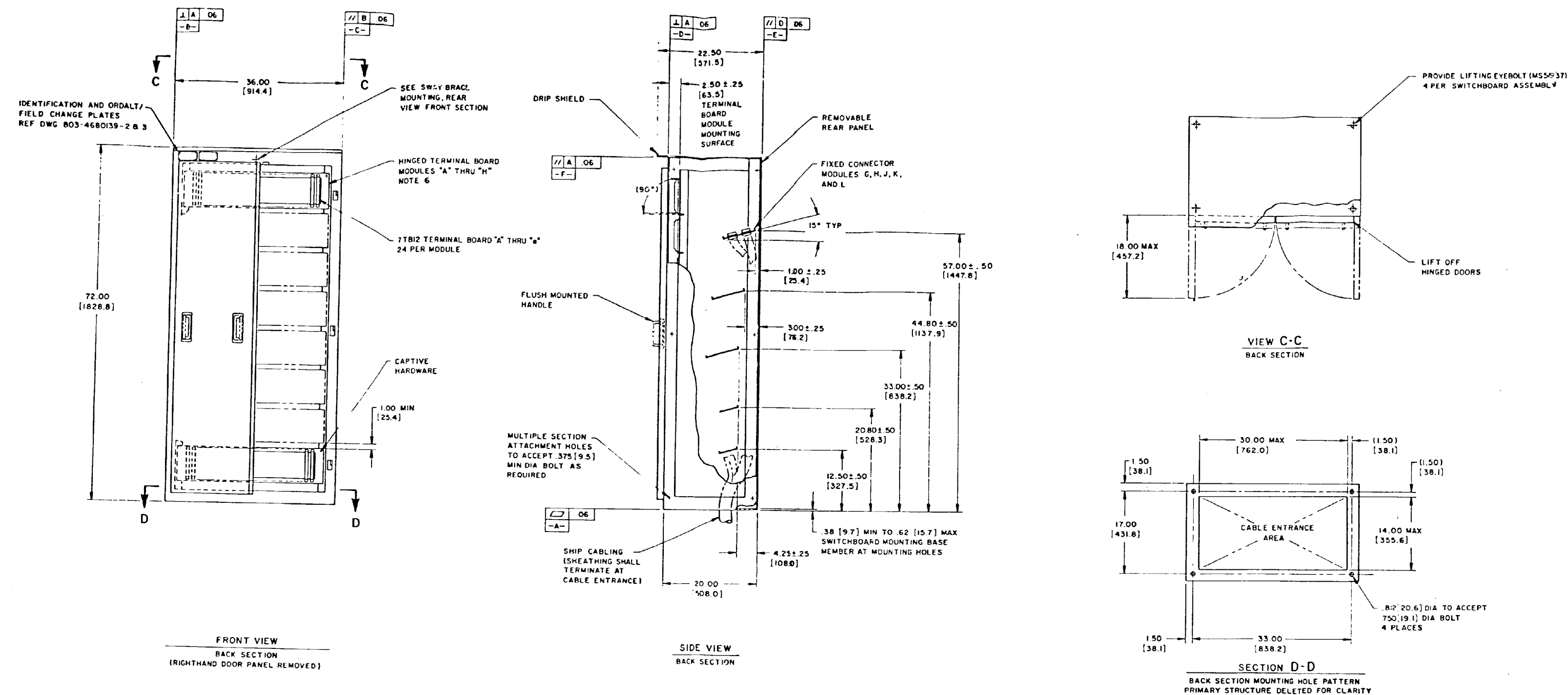


FIGURE 1. Switchboard type VI (sheet 1 of 2).



SH 11502-1

FIGURE 1. Switchboard type VI (sheet 2 of 2).