

MIL-S-17000/4A(SH)
2 May 1983
SUPERSEDING
MIL-S-17000/4(SH)
30 April 1980

MILITARY SPECIFICATION SHEET

SWITCHING EQUIPMENT, COMBAT SYSTEM, COMMAND AND CONTROL
FIRE CONTROL AND INTERIOR COMMUNICATION SWITCHBOARD,
SURFACE SHIP, BULKHEAD-MOUNTED (PLUG CONNECTED),
TYPE V

This specification sheet is approved for use by the Naval Sea Systems Command, Department of the Navy, and is available for use by all Departments and Agencies of the Department of Defense.

The complete requirements for acquiring the switchboard described herein shall consist of this document and the latest issue of MIL-S-17000.

REQUIREMENTS :

Switchboard arrangement: Switchboard arrangement shall be as shown on figure 1.

Mounting: Switchboard enclosure shall be provided with mounting bolt clearance holes as shown on figure 1.

Arrangement and enclosure size: Arrangement and enclosure size (see figure 1) and type of switches, fuses, rear terminals, ship connectors, and lights shall be as specified in the acquisition technical data package.

Rear terminals: Rear terminals shall be taper pin blocks conforming to requirement 3 of MIL-STD-1657 or terminal junction systems conforming to requirement 4 of MIL-STD-1657 or terminal boards (type 6TB24) conforming to MIL-T-55164/12.

Taper pin block or terminal junction system arrangement: Taper pin blocks or terminal junction systems shall be arranged into two columns of up to 34 blocks each. There shall be one 6TB24 terminal board located below the taper pin blocks or terminal junction systems.

Terminal board arrangement: Terminal boards shall be arranged as shown on figure 1.

Ⓐ denotes changes.

FSC 1290

MIL-S-17000/4A(SH)

Rear terminal board mounting: Rear terminal boards shall be mounted as shown on figure 1.

Terminal boards and ship connector numbering: Terminal boards and ship connectors shall be numbered as shown on figure 1.

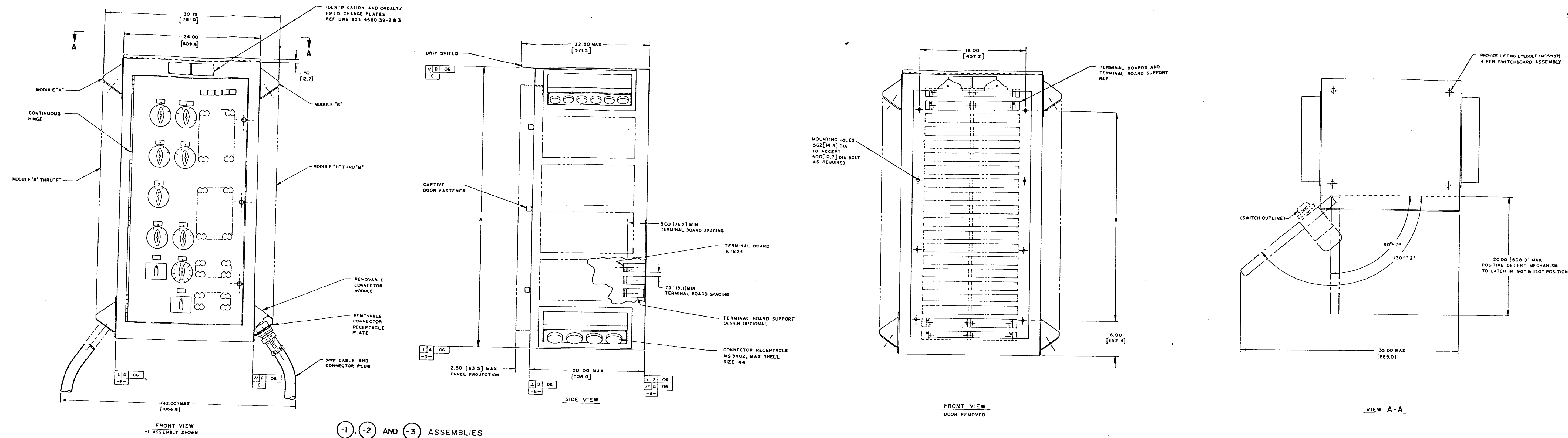
Taper pin blocks or terminal junction systems numbering: With the door open, the taper pin blocks or terminal junction systems shall be numbered in accordance with MIL-S-17000 starting in the upper left corner with one, numbering across to the right, and in consecutive rows down.

Wiring arrangements: Ship cables shall terminate in connector plugs in accordance with MS3406 with straight strain relief clamps in accordance with MS3417. Box mounted connector receptacles in accordance with MS3402 shall be mounted on the sides of the enclosure to mate with the ship cable plugs (see figure 1). Ship cable connector receptacles shall be mounted on the inside of removable plates. These plates shall be mounted on the outside of the module with the heads of the receptacle securing screws on the outside of the module. Keyway of the connector receptacles shall be located towards the top of the module. Only wiring for active circuits shall be installed from the connector receptacles to the rear terminals. Wiring between the connector receptacles, terminal boards, and door mounted items shall be via flexible harness wiring.

Preparing activity:
Navy - SH
(project 1290-N380)

☆ U.S. GOVERNMENT PRINTING OFFICE: 1983-605-019/7142

MIL-S-17000/4A(SH)



SH 11501

FIGURE 1. Switchboard type V.