

MIL-S-17000/2A(SH)

2 May 1983

SUPERSEDING

MIL-S-17000/2

30 April 1980

MILITARY SPECIFICATION SHEET

A

SWITCHING EQUIPMENT, COMBAT SYSTEM, COMMAND AND CONTROL,
FIRE CONTROL AND INTERIOR COMMUNICATION SWITCHBOARD,
SURFACE SHIP, BULKHEAD MOUNTED (TERMINAL BOARD CONNECTED),
TYPE III

This specification sheet is approved for use by the Naval Sea Systems Command, Department of the Navy, and is available for use by all Departments and Agencies of the Department of Defense.

The complete requirements for acquiring the switchboard described herein shall consist of this document and the latest issue of MIL-S-17000.

REQUIREMENTS:

Switchboard arrangement: Switchboard arrangement shall be as shown on figure 1.

Mounting: Switchboard enclosure shall be provided with mounting bolt clearance holes as shown on figure 1.

Arrangement and enclosure size: Arrangement, enclosure size (see figure 1) and type of switches, fuses, and lights shall be as specified in the acquisition technical data package.

Illumination: When specified in the acquisition technical data package fixed and rotary switch description plates shall be internally illuminated by red light (for protecting dark adaptation) and controlled by a dimmer mounted on the door. Where illumination is required, the pilot lights shall be red and shall have an intensity control.

Terminals: Subject to space limitations, spare terminals up to 20 percent of active terminals shall be provided on terminal boards for ship wires.

Terminal boards: Ship wire terminal boards shall be mounted vertically.

Preparing activity:
Navy - SH
(Project 1290-N378)

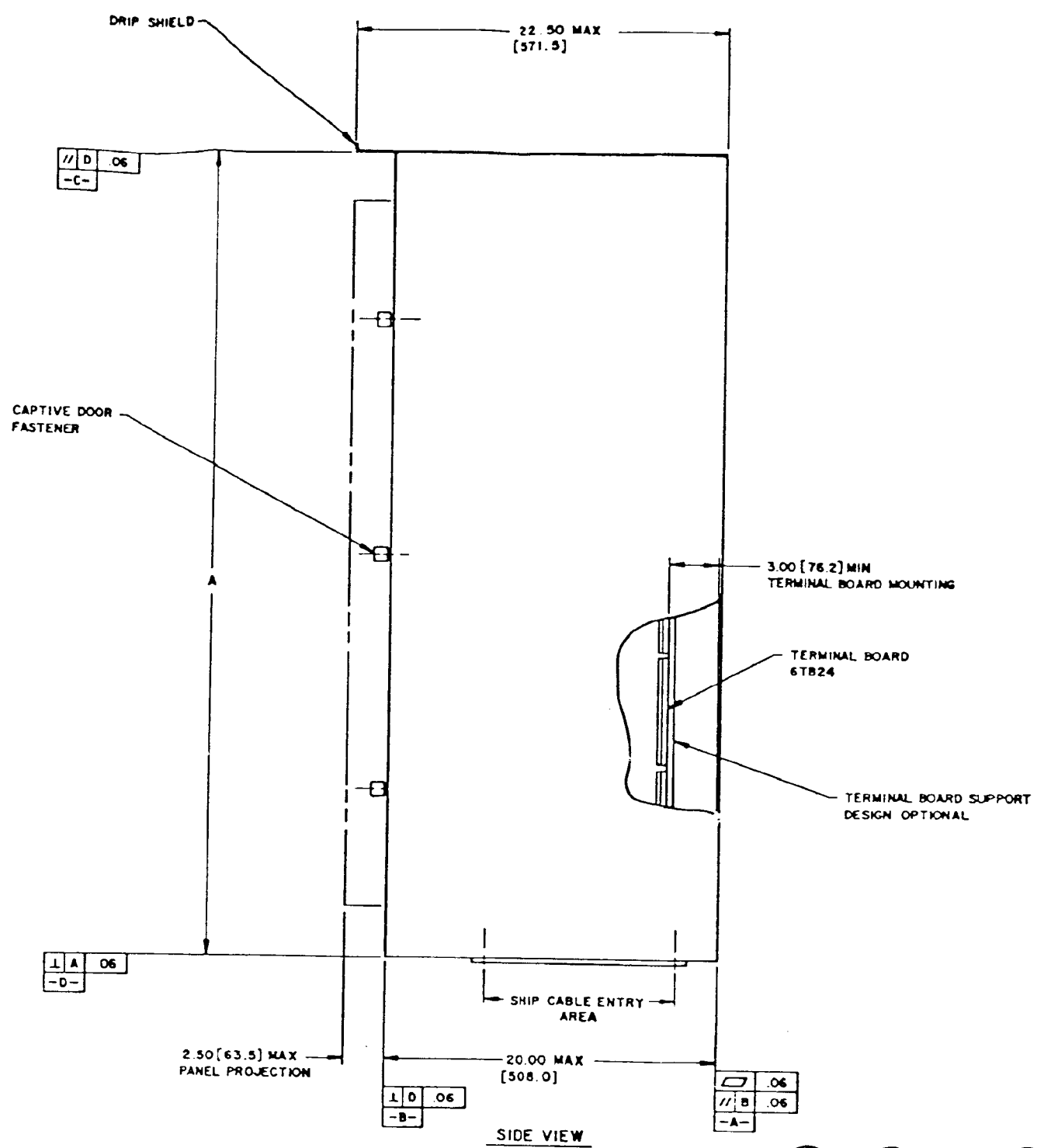
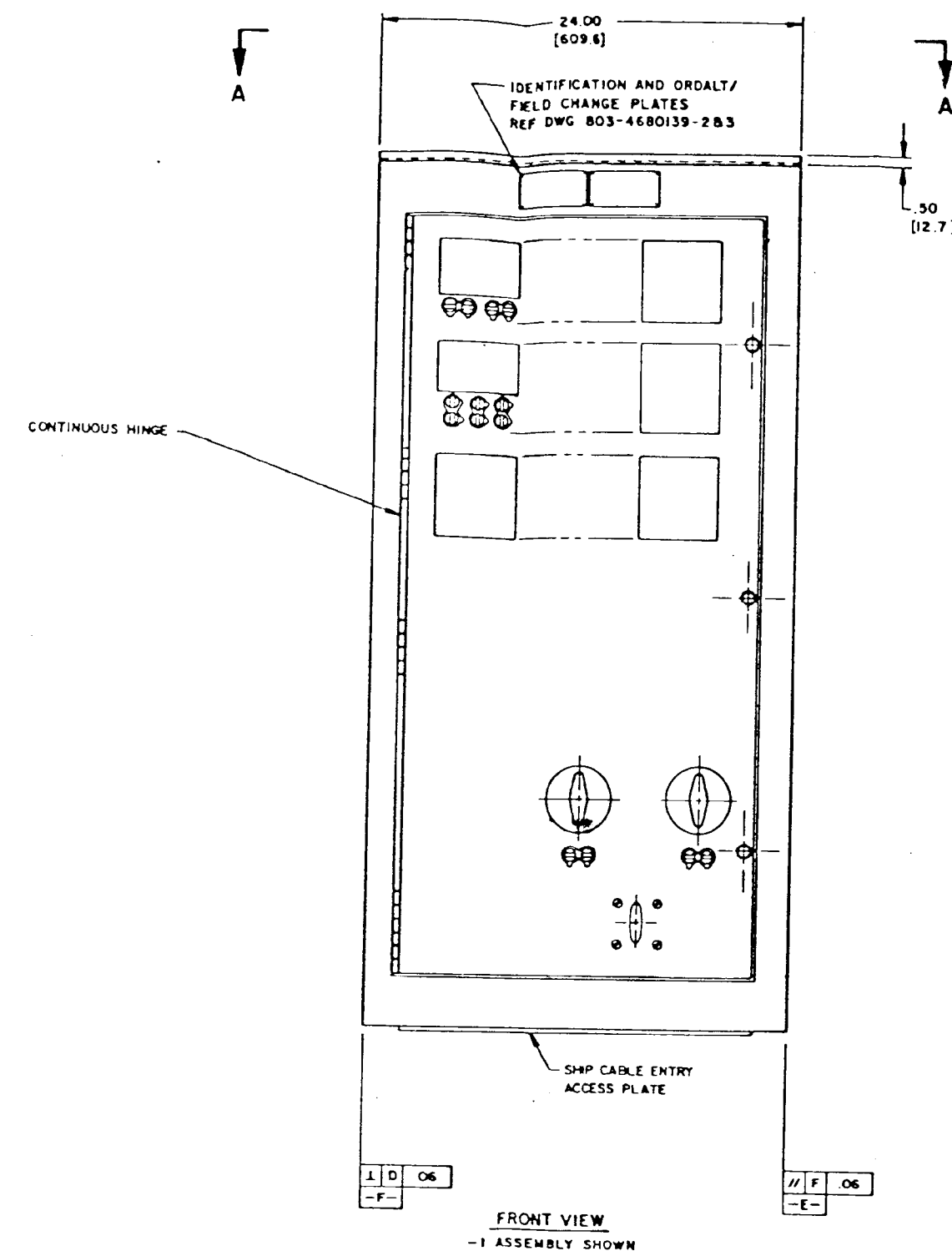
A denotes changes.

FSC 1290

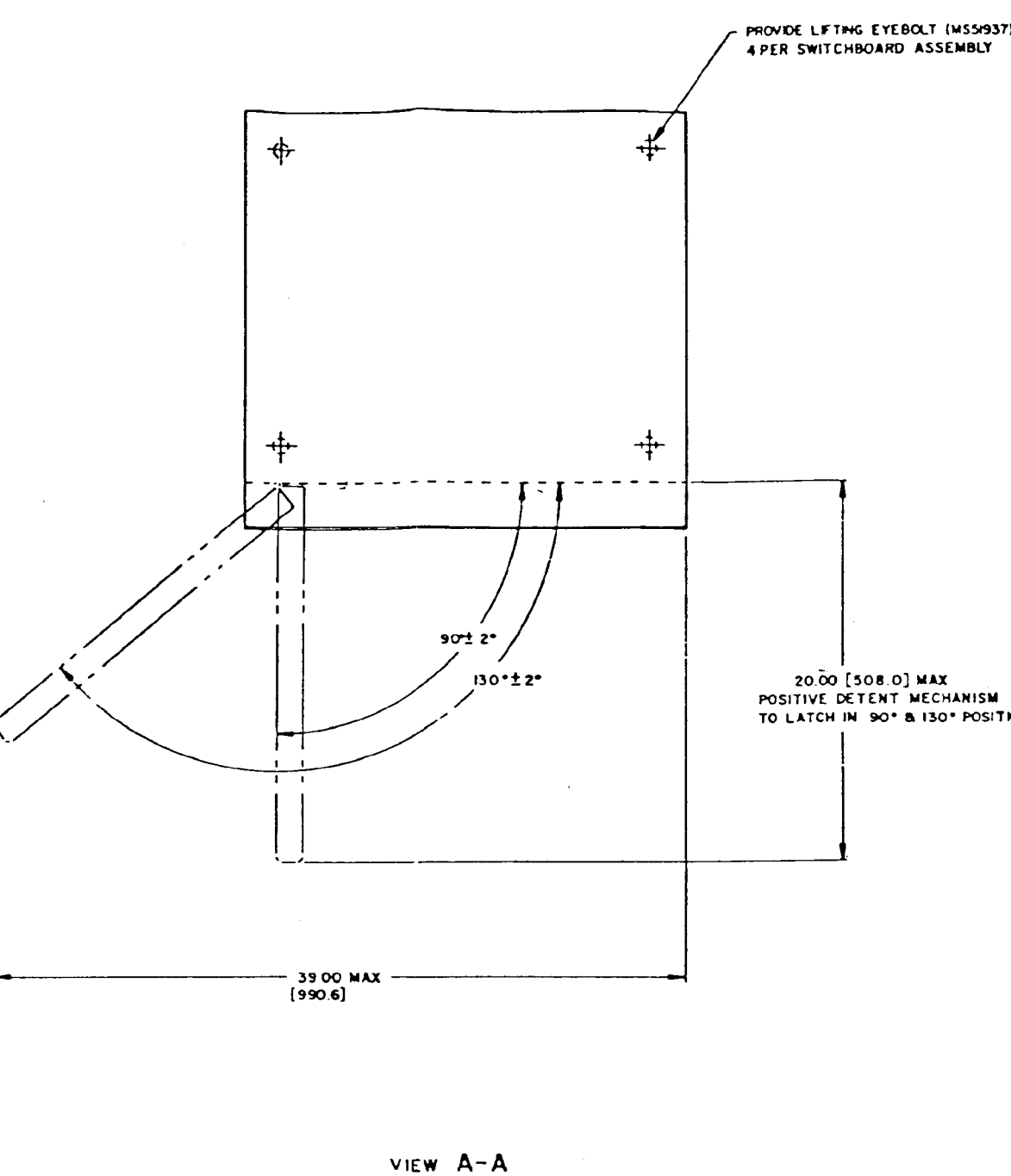
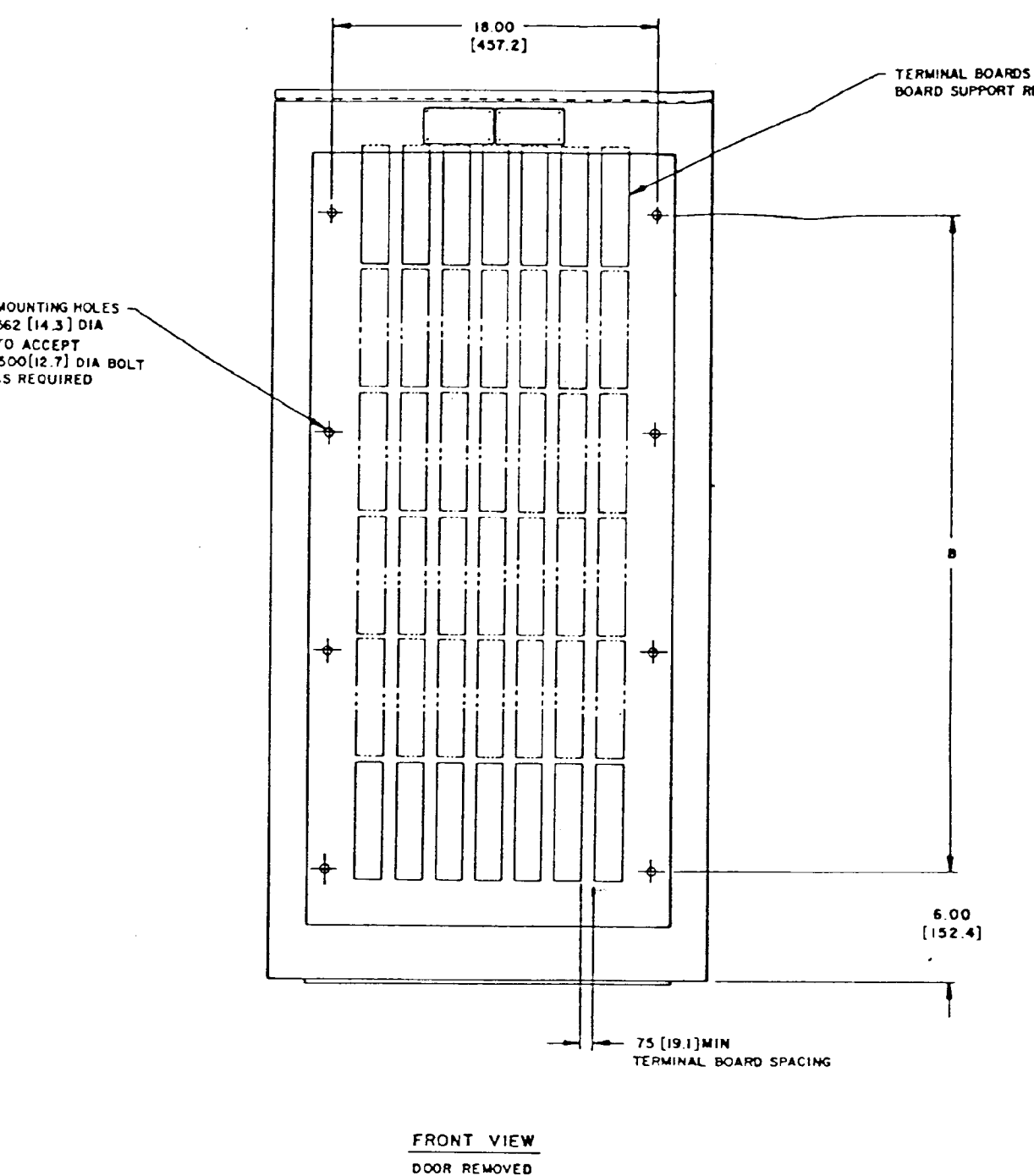
☆ U.S. GOVERNMENT PRINTING OFFICE: 1983-605-019/7141
Page 1/2 of 4

MIL-S-17000/2A(SH)

ENCLOSURE SIZE TABULATION		
ASSEMBLY DASH NO.	A DIM	B DIM
-1	48.00 [1219.2]	3 EQUAL SPACES @ 12.00 ± 36.00 [304.8 ± 914.4] TOLERANCE NONCUMULATIVE
-2	36.00 [914.4]	2 EQUAL SPACES @ 12.00 ± 24.00 [304.8 ± 609.6] TOLERANCE NONCUMULATIVE
-3	24.00 [609.6]	12.00 [304.8]



①, ②, AND ③ ASSEMBLIES



- NOTES:
1. ALL DIMENSIONS ARE IN INCHES.
 2. METRIC EQUIVALENTS ARE GIVEN FOR GENERAL INFORMATION ONLY AND ARE BASED UPON 1 INCH = 25.4 mm. DIMENSIONS IN [] ARE MILLIMETERS.
 3. UNLESS OTHERWISE SPECIFIED, TOLERANCES ARE XX ± .03, .XXX ± .00 AND ANGLES ± 30°.
 4. INTERIOR AND EXTERIOR SURFACES OF ENCLOSURE SHALL BE PAINTED IN ACCORDANCE WITH MIL-S-17000.
 5. STRUCTURE SHALL BE IN ACCORDANCE WITH MIL-S-17000.
 6. THE GEOMETRIC CHARACTERISTIC SYMBOLS USED IN THIS FIGURE ARE DEFINED IN ANSI Y14.5.

FIGURE 1. Switchboard type III.