

MIL-S-17000/1A(SH)
2 May 1983

SUPERSEDING
MIL-S-17000/1(SH)
30 April 1980

MILITARY SPECIFICATION SHEET

A

SWITCHING EQUIPMENT, COMBAT SYSTEM, COMMAND AND CONTROL,
FIRE CONTROL AND INTERIOR COMMUNICATION SWITCHBOARD,
SURFACE SHIP, DECK-MOUNTED (TERMINAL BOARD CONNECTED),
TYPE II

This specification sheet is approved for use by the Naval Sea Systems Command, Department of the Navy, and is available for use by all Departments and Agencies of the Department of Defense.

The complete requirements for acquiring the switchboard described herein shall consist of this document and the latest issue of MIL-S-17000.

REQUIREMENTS:

Switchboard section arrangement: Each switchboard section shall be arranged as shown on figure 1. The front section shall provide space for 36 panel-mounted assemblies mounted on a door hinged on one side and latched on the other. The back section shall contain eight modules.

Size: Size of the switchboard section shall be as shown on figure 1.

Mounting: Switchboard enclosure shall be provided with mounting bolt clearance holes as shown on figure 1.

Modules: Back section modules shall be arranged and mounted as shown on figure 1, sheet 2. Top module (module A) shall contain 12 connector receptacles in accordance with MIL-C-28748/9 (part number M28748/09FON01A) for connection of intersection wiring between sections. The seven lower modules (modules B through H) shall contain 18 terminal boards (type 7TB12) conforming to MIL-T-55164/13 and three connectors (part number M28748/09FON01A) conforming to MIL-C-28748/9. Only wiring for active circuits from the back of the terminal boards to the module connector receptacles shall be installed. The front of the type 7TB12 terminal boards shall be reserved for ship wiring. Intersection wiring between modules in different sections shall be connected between the back of the type 7TB12 terminal boards on the lower modules and the connector receptacles on the top (A) module. The plugs of the lower module connectors shall connect to the switchboard section's flexible wiring harness. These modules shall be spaced 1-inch minimum apart. The horizontal edges of these modules shall be covered with insulation to prevent chafing of ship wiring.

A denotes changes.

FSC 1290

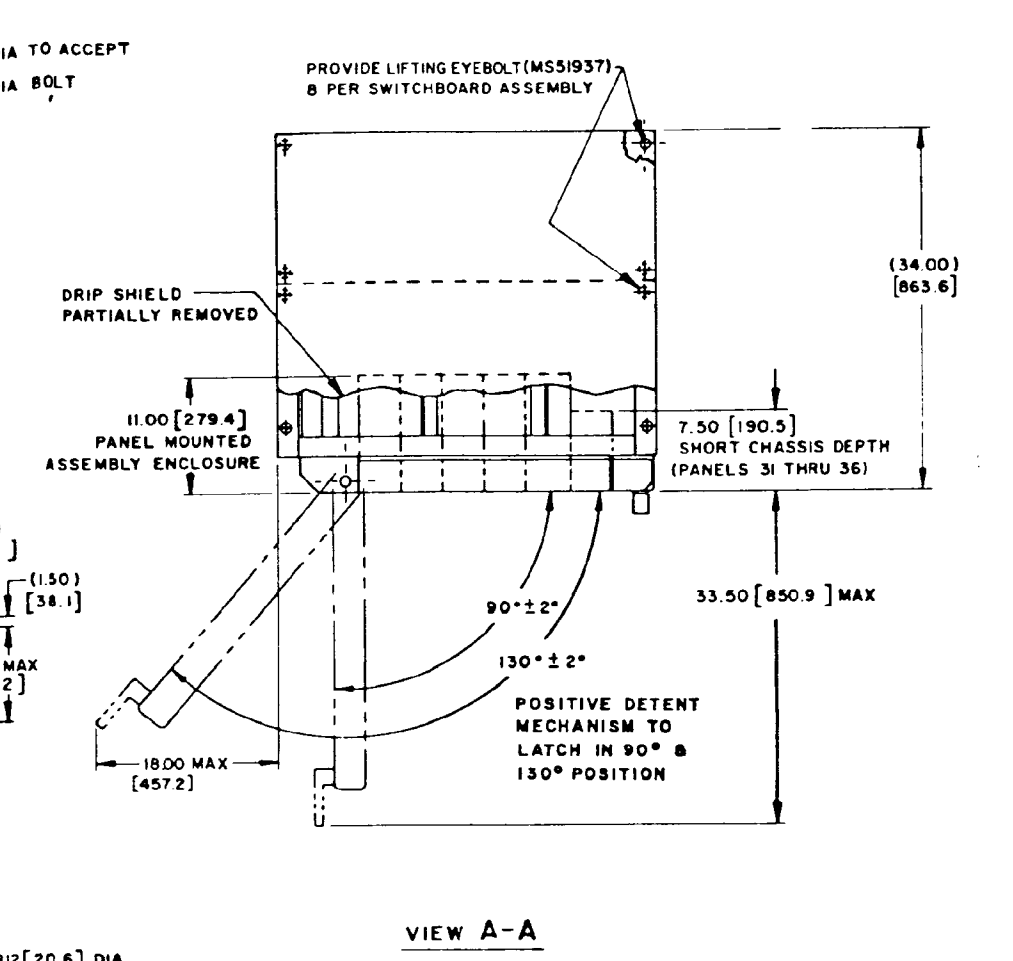
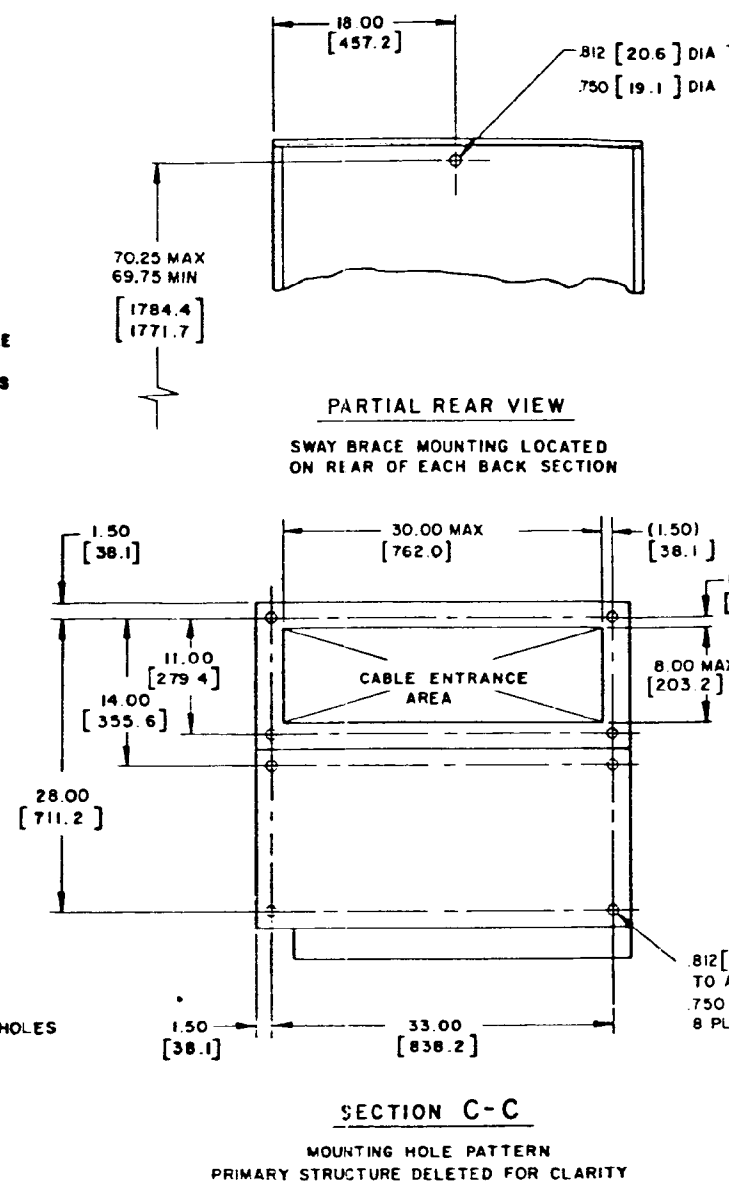
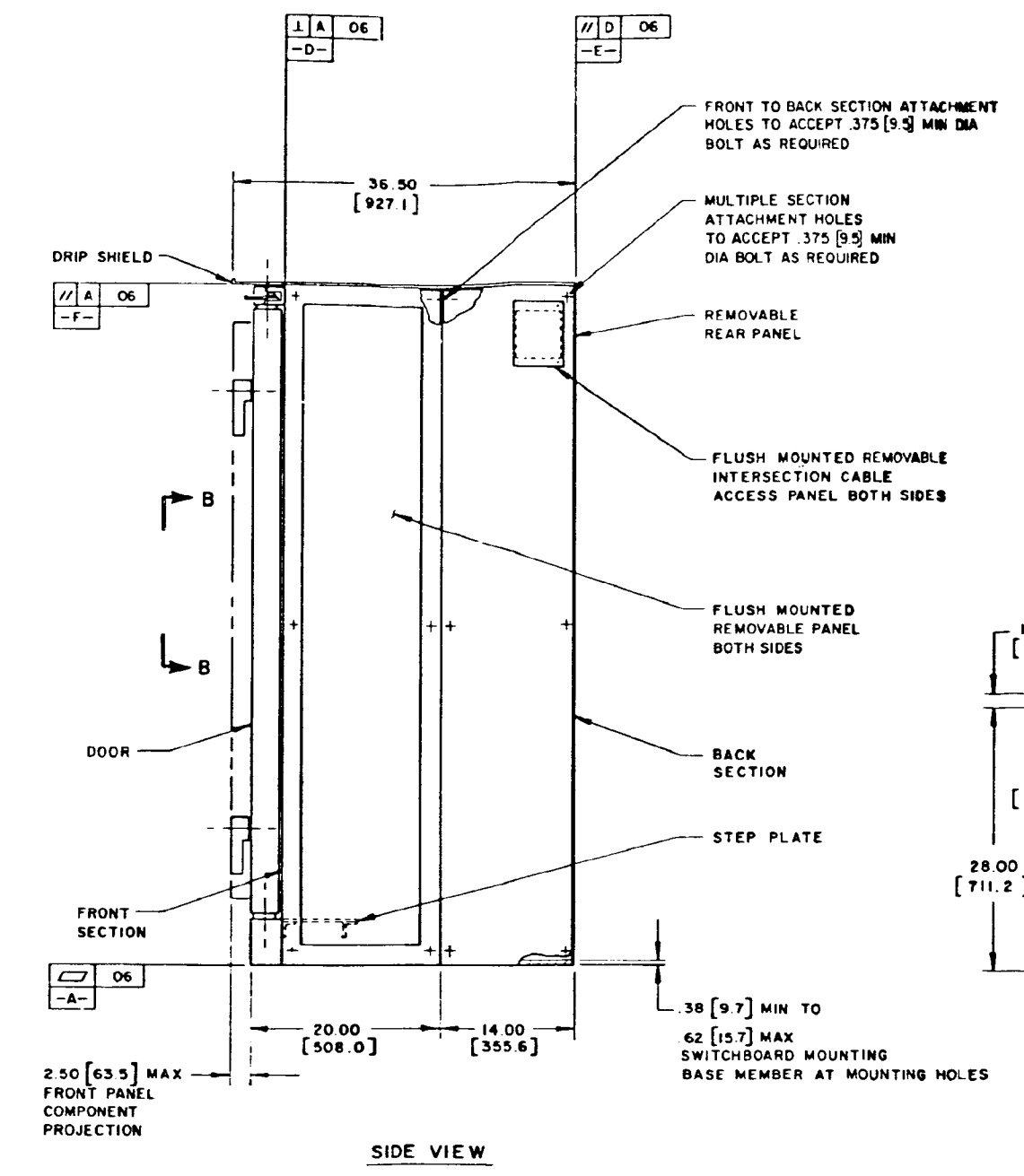
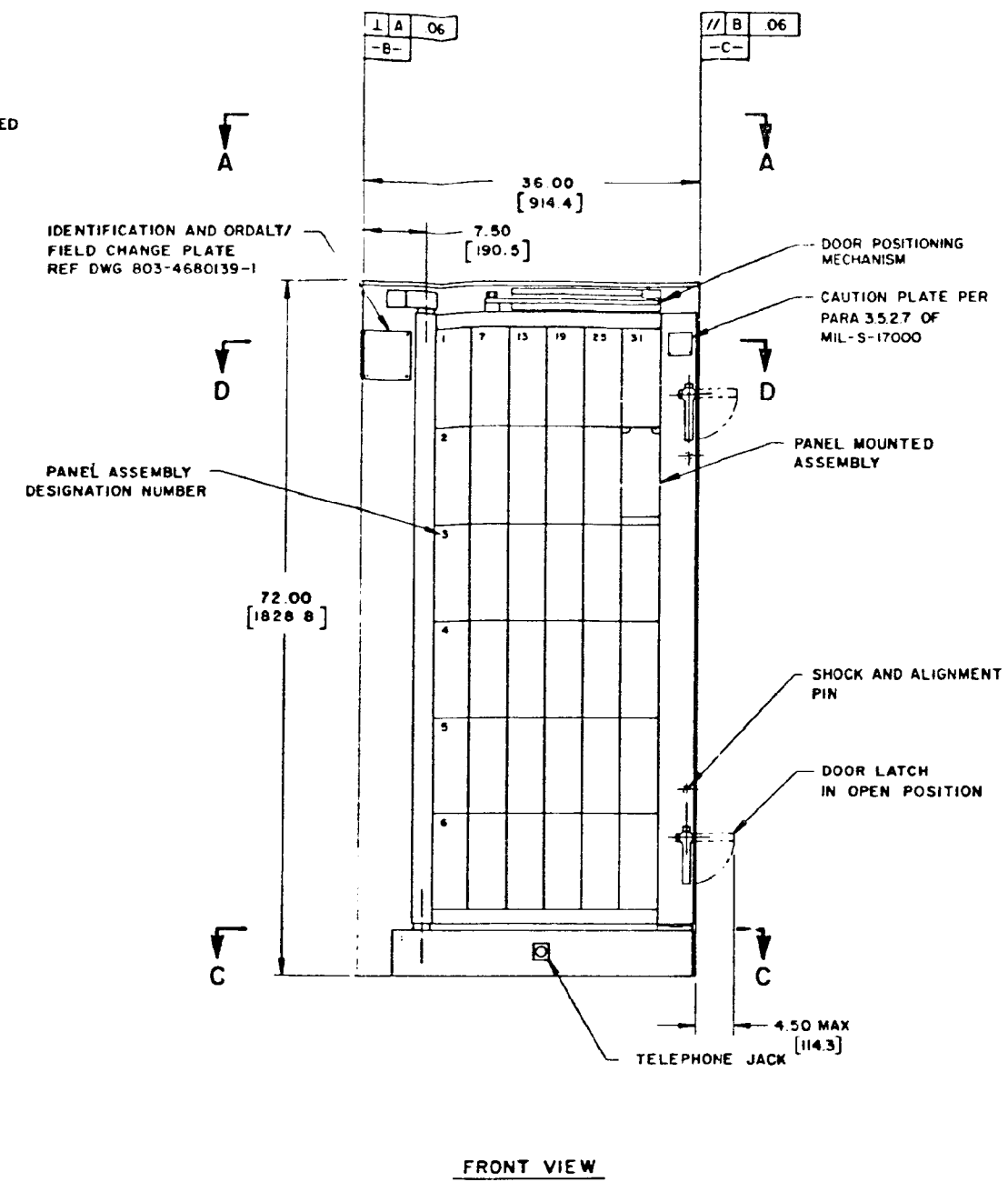
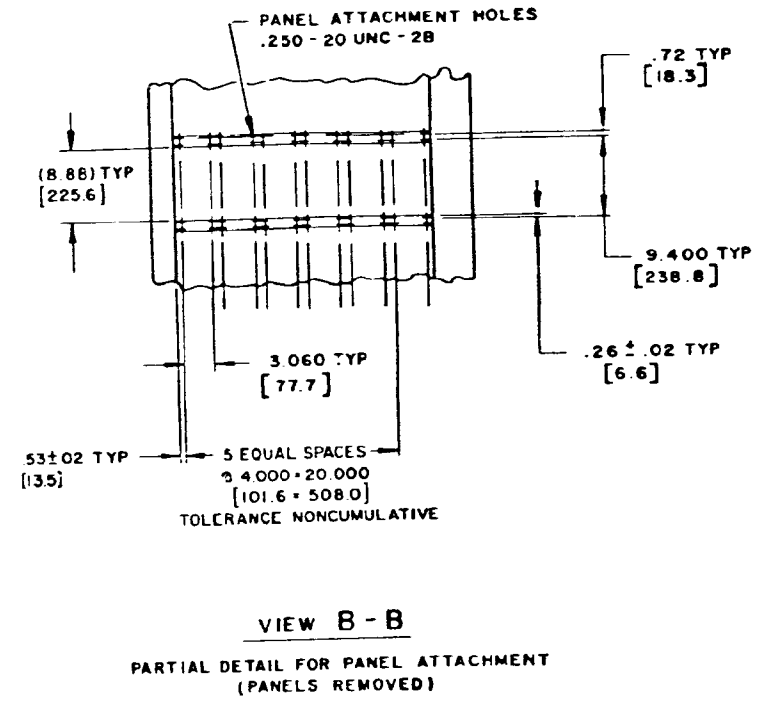
MIL-S-17000/1A(SH)

Connector receptacles: Connector receptacles on the seven lower modules (modules B through H) shall be mounted at an angle of 15 degrees (see figure 1) to minimize possible interference with wiring harness on the back of the door.

Module, connector receptacle, and terminal board designation: Modules shall be identified by their respective section numbers and shall be numbered as shown on figure 1.

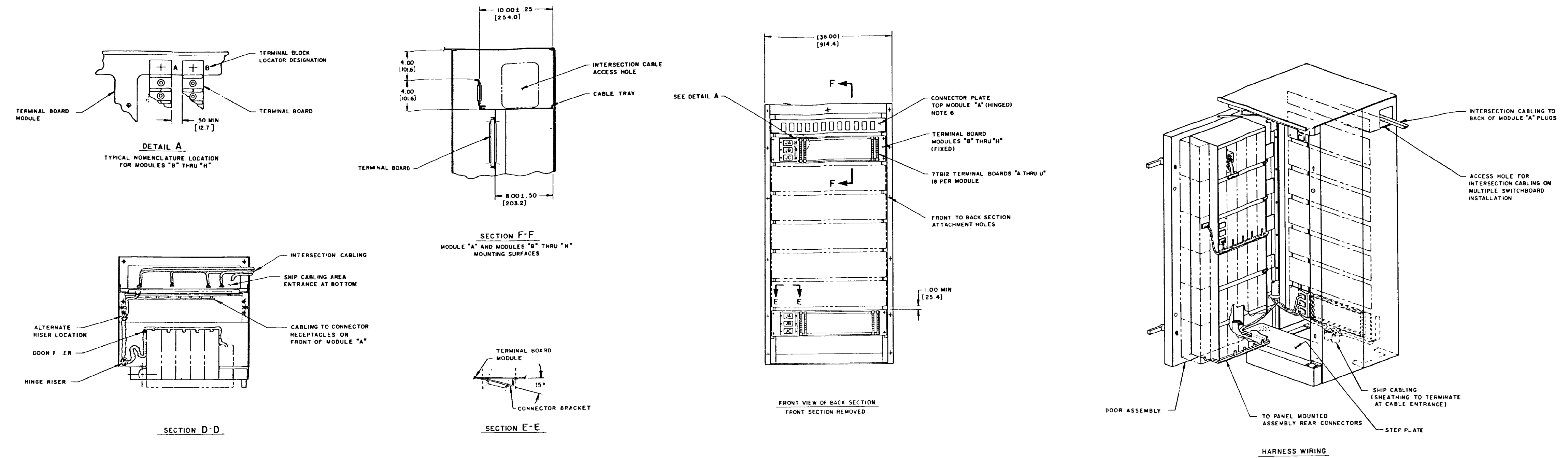
Preparing activity:
Navy - SH
(Project 1290-N377)

- NOTES**
1. ALL DIMENSIONS ARE IN INCHES.
 2. METRIC EQUIVALENTS ARE GIVEN FOR GENERAL INFORMATION ONLY AND ARE BASED UPON 1 INCH = 25.4 mm. DIMENSIONS IN [] ARE MILLIMETERS.
 3. UNLESS OTHERWISE SPECIFIED, TOLERANCES SHALL BE .XX ± .03, .XXX ± .010 AND ANGLES ± 30°.
 4. INTERIOR AND EXTERIOR SURFACE OF ENCLOSURE SHALL BE PAINTED IN ACCORDANCE WITH REQUIREMENTS OF MIL-S-17000.
 5. STRUCTURE SHALL BE IN ACCORDANCE WITH MIL-S-17000.
 6. RESTRAINING LANYARD SHALL BE INSTALLED TO LIMIT MODULE TO 130° OPEN POSITION.
 7. THE GEOMETRIC CHARACTERISTIC SYMBOLS USED IN THIS FIGURE ARE DEFINED IN ANSI Y14.8.



SH 11498

FIGURE 1. Switchboard type II (sheet 1 of 2).



SH 11498-1

FIGURE 1. Switchboard type II (sheet 2 of 2).

INSTRUCTIONS: In a continuing effort to make our standardization documents better, the DoD provides this form for use in submitting comments and suggestions for improvements. All users of military standardization documents are invited to provide suggestions. This form may be detached, folded along the lines indicated, taped along the loose edge (*DO NOT STAPLE*), and mailed. In block 5, be as specific as possible about particular problem areas such as wording which required interpretation, was too rigid, restrictive, loose, ambiguous, or was incompatible, and give proposed wording changes which would alleviate the problems. Enter in block 6 any remarks not related to a specific paragraph of the document. If block 7 is filled out, an acknowledgement will be mailed to you within 30 days to let you know that your comments were received and are being considered.

NOTE: This form may not be used to request copies of documents, nor to request waivers, deviations, or clarification of specification requirements on current contracts. Comments submitted on this form do not constitute or imply authorization to waive any portion of the referenced document(s) or to amend contractual requirements.

(Fold along this line)

(Fold along this line)

DEPARTMENT OF THE ARMY

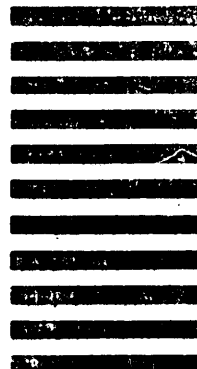


NO POSTAGE
NECESSARY
IF MAILED
IN THE
UNITED STATES

OFFICIAL BUSINESS
PENALTY FOR PRIVATE USE \$300

BUSINESS REPLY MAIL
FIRST CLASS PERMIT NO. 12062 WASHINGTON D. C.
POSTAGE WILL BE PAID BY THE DEPARTMENT OF THE ARMY

Commander
US Army Armement Research and Development Command
ATTN: DRDAR-TST-S
Dover, NJ 07801



STANDARDIZATION DOCUMENT IMPROVEMENT PROPOSAL

(See Instructions - Reverse Side)

1. DOCUMENT NUMBER		2. DOCUMENT TITLE	
3a. NAME OF SUBMITTING ORGANIZATION		4. TYPE OF ORGANIZATION (Mark one)	
b. ADDRESS (Street, City, State, ZIP Code)		<input type="checkbox"/> VENDOR	
		<input type="checkbox"/> USER	
		<input type="checkbox"/> MANUFACTURER	
		<input type="checkbox"/> OTHER (Specify): _____	
5. PROBLEM AREAS			
a. Paragraph Number and Wording:			
b. Recommended Wording:			
c. Reason/Rationale for Recommendation:			
6. REMARKS			
7a. NAME OF SUBMITTER (Last, First, MI) - Optional		7b. WORK TELEPHONE NUMBER (Include Area Code) - Optional	
c. MAILING ADDRESS (Street, City, State, ZIP Code) - Optional		8. DATE OF SUBMISSION (YYMMDD)	

(TO DETACH THIS FORM, CUT ALONG THIS LINE.)