

INCH-POUND

MIL-R-71135 (AR)
 AMENDMENT 2
14 September 1994
 SUPERSEDING
 AMENDMENT 1
 8 December 1992

MILITARY SPECIFICATION

RIFLE, 5.56MM: M16A2E3

This Amendment forms a part of MIL-R-71135(AR), dated 19 June 1993, and is approved for use by U.S. Army Armament, Munitions and Chemical Command and is available for use by all Departments and Agencies of the Department of Defense.

PAGE 1

* Title: Add "(M16A3)" after "M16A2E3".

PAGE 3

* 2.1.2:

under 12012000: Delete "M16A2E3" and substitute "M16A3".
 under SPI12012000: Delete "M16A2E3" and substitute "M16A3".

PAGE 9

3.4.6: Delete in it's entirety and substitute the following:

* "3.4.6 Targeting and accuracy. A series of 10 rounds fired from each rifle at a range of 91.4 meters shall be within the extreme spread and targeting area (heavy outline) specified in Figure I when the front and rear sights are set as follows. The normal rear sight peep (sight rotated fully rearward) shall be used with the rear sight set centrally in the slot for windage within plus or minus five (5) clicks. The top edge of the front sight post flange shall be set flush to .030 inch below the bottom surface of the front sight slot. After completion of the endurance test, each rifle shall be retested for accuracy and shall meet a seven (7) inch extreme spread requirement for a series of 10 rounds fired. Ammunition shall be Government standard M855, 5.56mm ball cartridges conforming to Drawing 9342868 and shall have a vertical and horizontal standard deviation at 600 yards between 3.4 inches and 4.0 inches when measured in accordance with MIL-C-63989."

AMSC N/A

1 of 3

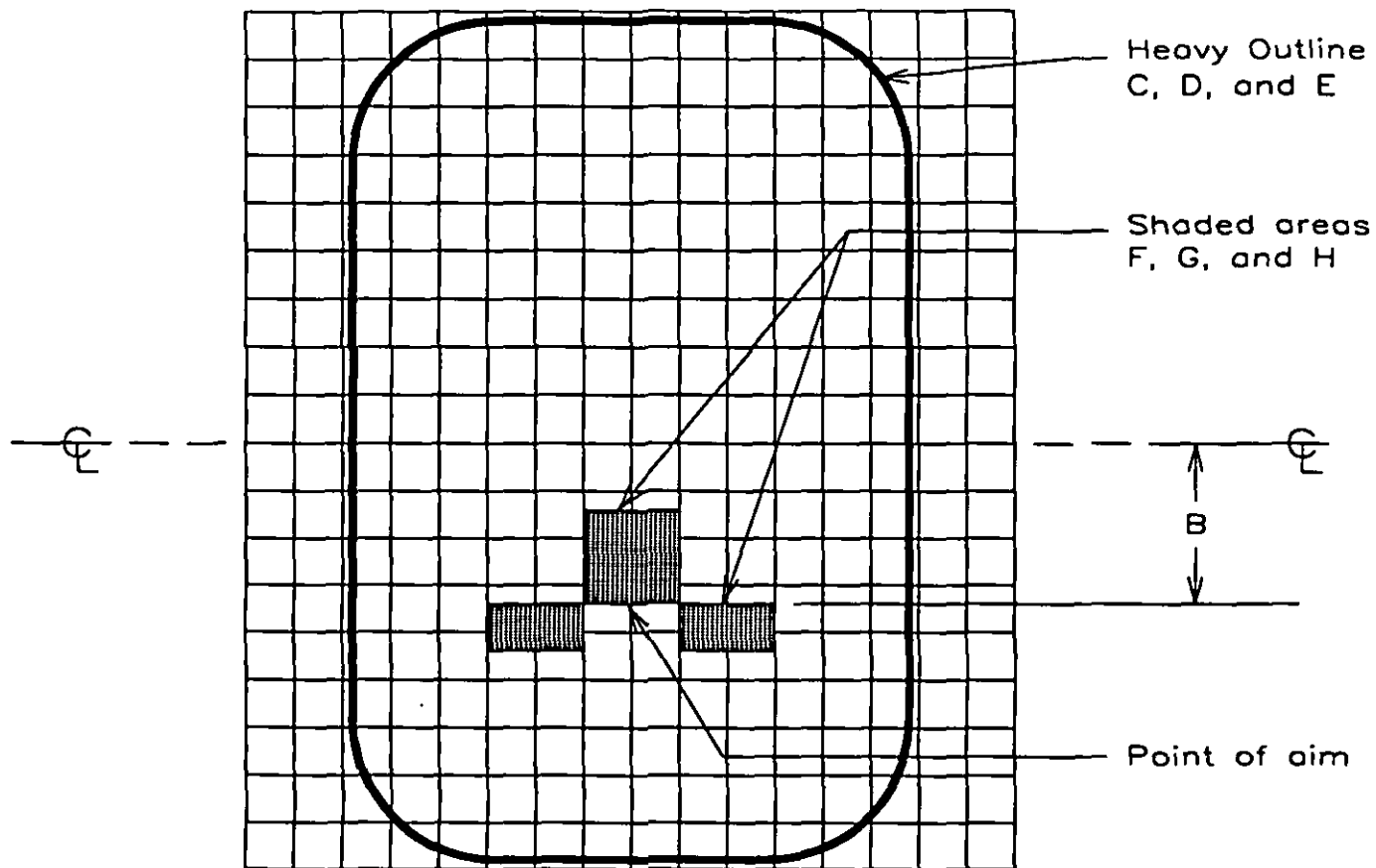
FSC 1005

DISTRIBUTION A. Approved for public release; distribution is unlimited.

MIL-R-71135(AR)
AMENDMENT 2

PAGE 10

Figure I: Delete in its entirety and substitute the following:



- A - 10 shot group extreme spread
- B - Vertical distance from target centerline to point of aim
- C - Height of heavy outline
- D - Width of heavy line
- E - Radius of corners of heavy outline
- F - Width of shaded areas
- G - Height of upper shaded area
- H - Heights of lower shaded areas
- I - Grid dimensions

Target Diagram For		Dimensions in inches								
		Group	P.O.A.	Heavy Outline			Shaded Areas			Grid
Meters	Yards	A	B	C	D	E	F	G	H	I
91.4	100	5.0	3.5	17.6	11.6	2.8	2.0	2.0	1.0	1.0

FIGURE I. Targeting and accuracy diagram.

MIL-R-71135 (AR)
AMENDMENT 2

PAGE 34

- * 4.7.2, line 4: Delete "8440220, 8440920 and Government furnished copper compression cylinders for insertion" and substitute "8440220 and 8440920 for insertion".

Page 47

- * 4.7.8.3, Add as new subparagraph c.:

"c. Accuracy. After completion of the 6,000 round endurance test, each rifle tested shall meet a seven (7) inch extreme spread requirement for a series of 10 rounds fired. Reference 4.7.6 for procedures to perform the accuracy test. Rifles rejected for failure to meet the accuracy requirement shall be retested by firing two additional 10 round targets. If the average extreme spread for all three accuracy targets is within the 7 inch extreme spread, the rifle will have passed. If the average extreme spread of the three accuracy targets exceeds the 7 inch requirement, the lot will have failed, and corrective action must be taken."

PAGE 51

- * 6.1: Change "M16A2E3" to "M16A3".

The margins of this amendment are marked with an asterisk or vertical lines to indicate where changes (additions, modifications, corrections, deletions) from the previous amendment was made. This was done as a convenience only and the Government assumes no liability whatsoever for any inaccuracies in these notations. Bidders and contractors are cautioned to evaluate the requirements of this document based on the entire content irrespective of the marginal notations and relationship to the last previous amendment.

Custodian:
Army-AR

Preparing activity:
Army-AR

(Project 1005-0828)