

INCH-POUND

MIL-R-24243/6E

22 June 1994

SUPERSEDING

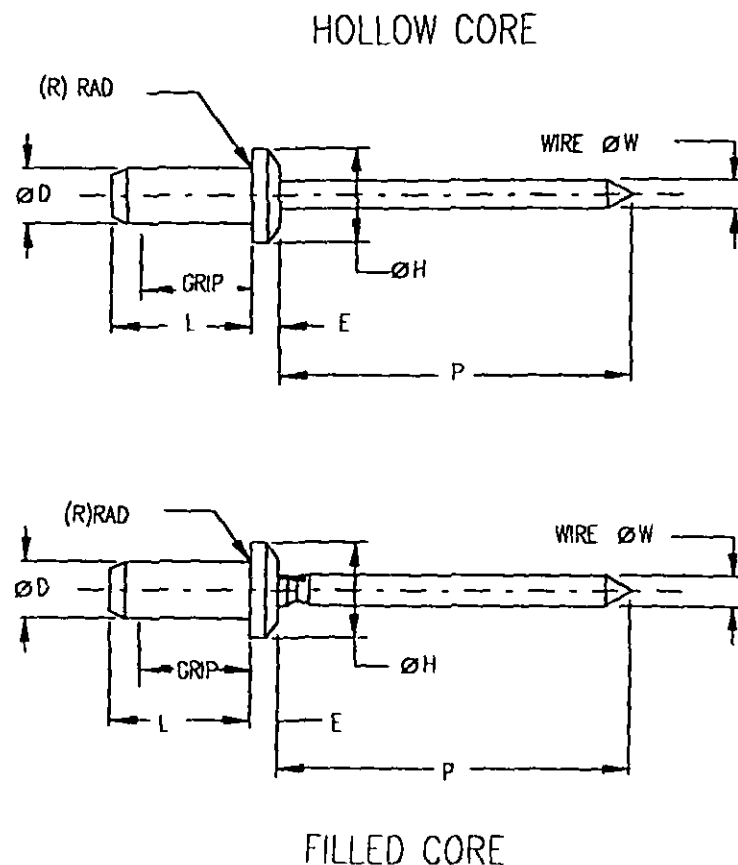
MIL-R-24243/6D

21 September 1987

MILITARY SPECIFICATION SHEET**RIVETS, BLIND, NONSTRUCTURAL, RETAINED MANDREL,
CLOSED-END, DOMED HEAD, ALUMINUM ALLOY**

This specification is approved for use by all Departments and Agencies of the Department of Defense.

The requirements for acquiring the retained mandrel, nonstructural, blind rivets described herein shall consist of this specification and the latest issue of MIL-R-24243.

**NOTES:**

1. All dimensions are in inches.

FIGURE 1. RIVETS

AMSC N/A

FSC 5320

DISTRIBUTION STATEMENT A. Approved for public release; distribution is unlimited.

MIL-R-24243/6E

REQUIREMENTS:

1. Material. Blind rivets shall be furnished in the following material combinations and dimensions.

TABLE I. MATERIAL COMBINATION SYMBOLS

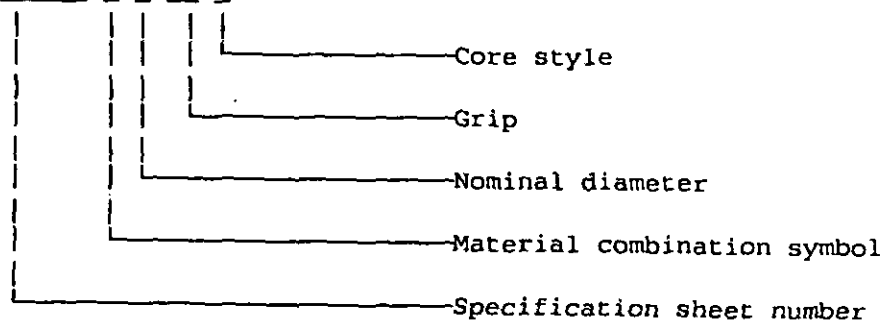
SYMBOL	COMBINATION	
	BODY	MANDREL
A	5056 Aluminum Alloy (UNS A95056)	1012-1025 Steel (UNS G10120-G10250) 1045-1075 Steel (UNS G10450-G10750)
C	1100 Aluminum Alloy (UNS A91100)	2024 Aluminum Alloy (UNS A92024)

TABLE II. BASIC DIMENSIONS

NOM DIA	BASIC DIMENSIONS					RECOMMENDED HOLE SIZE
	ØD	H	E	R MAX	W NOM	
.125	.128 .122	.252 .224	.050 .040	.025	.073	.129-.133
.156	.159 .153	.328 .296	.065 .055	.025	.091	.160-.164
.188	.191 .183	.394 .356	.080 .070	.025	.109	.192-.196

2. Part Number. The part number shall consist of the letter "M", the basic number of this specification sheet, followed by a dash number consisting of a material combination symbol, a nominal body diameter size code in thirty-seconds of an inch, and a maximum grip code in sixteenths of an inch, and a core style code taken from Table III.

EXAMPLE: M24243/6 A 5 03 F



M24243/6A503F Indicates - Rivet, blind, nonstructural, retained mandrel, closed-end, domed head, 5056 (UNS A95056) aluminum alloy body, 1012-1025 (UNS G10120-G10250) or 1045-1075 (UNS G10450-G10750) steel mandrel; nominal body diameter size, .156; grip range; .126-.187, style; filled core.

MIL-R-24243/6E

3. Changes from previous issues. Asterisks are not used in this revision to identify changes with respect to the previous issue due to the extensiveness of the changes.

TABLE III. DASH NUMBERS AND DIMENSIONS

DASH NUMBER		L	P MIN	RECOMMENDED GRIP RANGE
HOLLOW CORE	FILLED CORE			
A401H	C402H C403H C404H	A401F	1.00	.032-.062
A402H		A402F		.063-.125
A403H		A403F		.126-.187
A404H				.188-.250
A405H				.251-.312
A406H				.313-.375
A502H	C504H	A502F	1.00	.063-.125
A503H		A503F		.126-.187
				.188-.250
A505H		A505F		.251-.312
A602H	C602H C604H C606H	A602F	1.00	.063-.125
A604H		A604F		.126-.250
A606H		A606F		.251-.375
A608H				.376-.500
A804H			1.00	.126-.250

Custodians:

Army - AR
Navy - AS
Air Force - 99

Preparing Activity:
DLA-IS

Review Activities:

Army - AV, MI
Air Force - 82
National Security Agency - NS

(Project 5320-0809-06)