

INCH-POUND

MIL-R-24243/3D

22 June 1994

SUPERSEDING

MIL-R-24243/3C

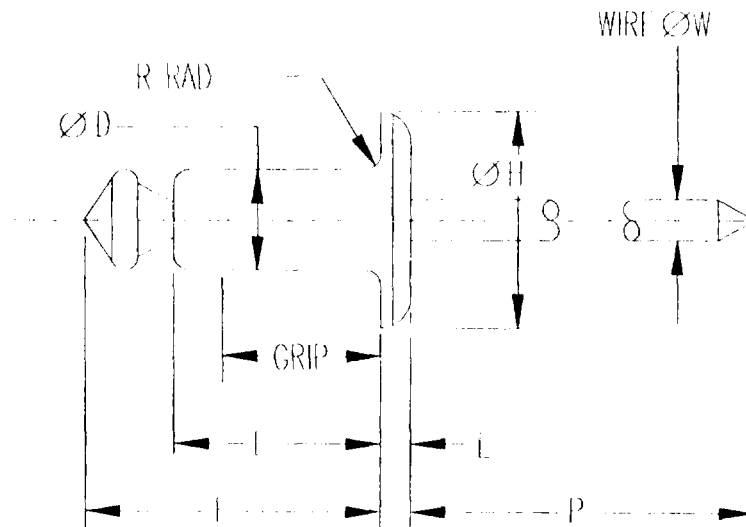
21 September 1987

## MILITARY SPECIFICATION SHEET

RIVETS, BLIND, NONSTRUCTURAL, RETAINED MANDREL,  
OPEN-END, LARGE DOMED HEAD, ALUMINUM ALLOY, CARBON STEEL

This specification is approved for use by all Departments and Agencies of the Department of Defense.

The requirements for acquiring the retained mandrel, nonstructural, blind rivets described herein shall consist of this specification and the latest issue of MIL-R-24243.



## NOTES:

1. All dimensions are in inches.

FIGURE 1. RIVETS

## REQUIREMENTS:

1. Material. Blind rivets shall be furnished in the following material combinations and dimensions.

AMSC N/A

FSC 5320

DISTRIBUTION STATEMENT A. Approved for public release; distribution is unlimited.

## MIL-R-24243/3D

TABLE I. MATERIAL COMBINATION SYMBOLS

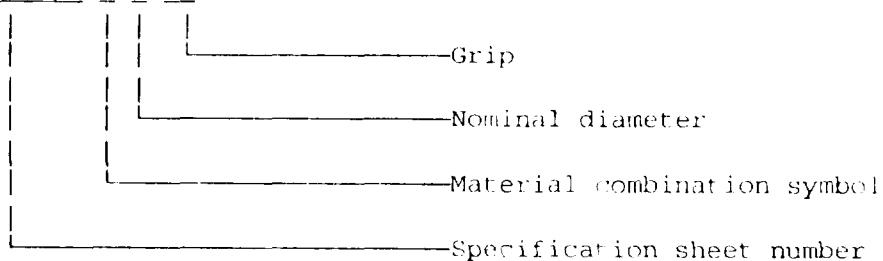
SYMBOL	COMBINATION	
	BODY	MANDREL
A	5056 Aluminum Alloy (UNS A95056)	1006-1038 Steel (UNS G10060-G10380)
B	5052 Aluminum Alloy (UNS A95052)	2024 Aluminum Alloy (UNS A92024)
D	1006-1010 Steel (UNS G10060-G10100)	1030-1060 Steel (UNS G10300-G10600)

TABLE II. BASIC DIMENSIONS

NOM DIA	BASIC DIMENSIONS							RECOMMENDED HOLE SIZE
	ØD	H	E	R MAX	W NOM	F MAX	P MIN	
.125	.128 .122	.390 .360	.055 .045	.020	.076	L MAX +.120	1.00	.129-.133
.188	.191 .183	.650 .600	.092 .082	.025	.114	L MAX +.160	1.00	.192-.196

2. Part Number. The part number shall consist of the letter "M", the basic number of this specification sheet, followed by a dash number consisting of a material combination symbol, a nominal body diameter size code in thirty-seconds of an inch, and a maximum grip code in sixteenths of an inch taken from Table III.

EXAMPLE: M24243/3 B 6 06



M24243/3B606 Indicates - Rivet, blind, nonstructural, retained mandrel, open-end, domed head, 5052 (UNS A95052) aluminum alloy body, 2024 (UNS A92024) aluminum alloy mandrel; nominal body diameter size, .188; grip range, .251-.375.

3. Changes from previous issues. Asterisks are not used in this revision to identify changes with respect to the previous issue due to the extensiveness of the changes.

MIL-R-24243/3D

TABLE III. DASH NUMBERS AND DIMENSIONS

DASH NUMBER			L	RECOMMENDED GRIP RANGE
A402	B402	D402	.245-.275	.063-.125
A404	B404	D404	.370-.400	.188-.250
A406	B406	D406	.495-.525	.313-.375
A408	B408	D408	.620-.650	.376-.500
A504	B504	D504	.395-.425	.188-.250
A506	B506	D506	.530-.550	.251-.375
A508	B508	D508	.645-.675	.376-.500
A606	B606	D606	.545-.575	.251-.375
A608	B608	D608	.670-.700	.376-.500
A610	B610	D610	.795-.825	.501-.625
A612	B612	D612	.920-.950	.626-.750

## Custodians:

Army - AR  
 Navy - AS  
 Air Force - 99

## Preparing Activity:

DIA-IS

## Review Activities:

Army - AV, M1  
 Air Force - 82  
 National Security Agency - NS

(Project 5320-0809-03)