

This document has been approved for public release and sale; its distribution is unlimited.

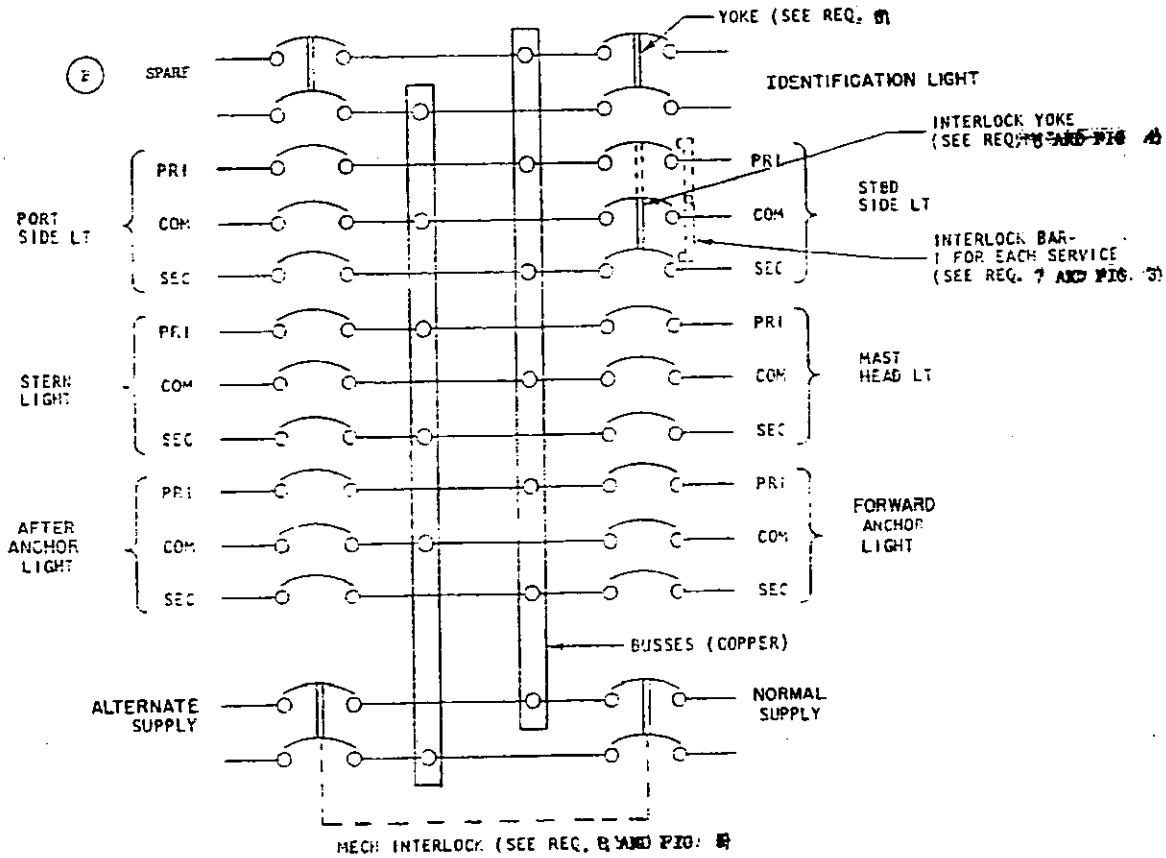
MIL-P-24175/5B(SHIPS)  
27 August 1971  
SUPERSEDING  
MIL-P-24175/5A(SHIPS)  
21 September 1970

MILITARY SPECIFICATION SHEET

(E)

PANEL, POWER SUPPLY AND CONTROL FOR SUBMARINE NAVIGATION LIGHTS,  
10 AMPERES, 120 VOLTS A.C., 60 HZ T.E. SYMBOL NO. 2550.1

The complete requirements for procuring the panel described herein shall consist of this document and the latest issue of MIL-P-24175.

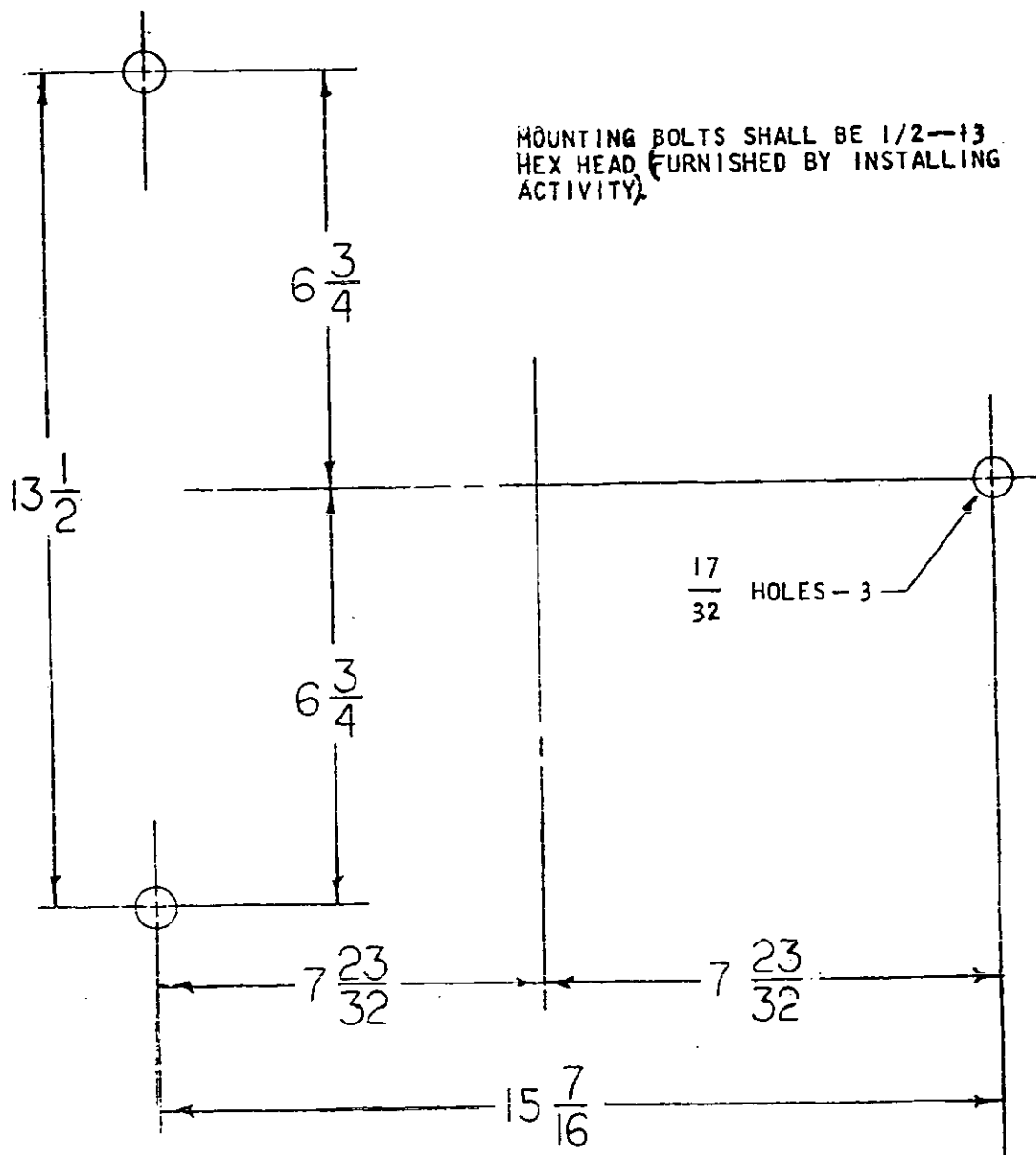


SR02876

Figure 1 - Panel, power supply and control for submarine navigation lights, T.E., symbol No. 2550.1.

(E) Denotes changes

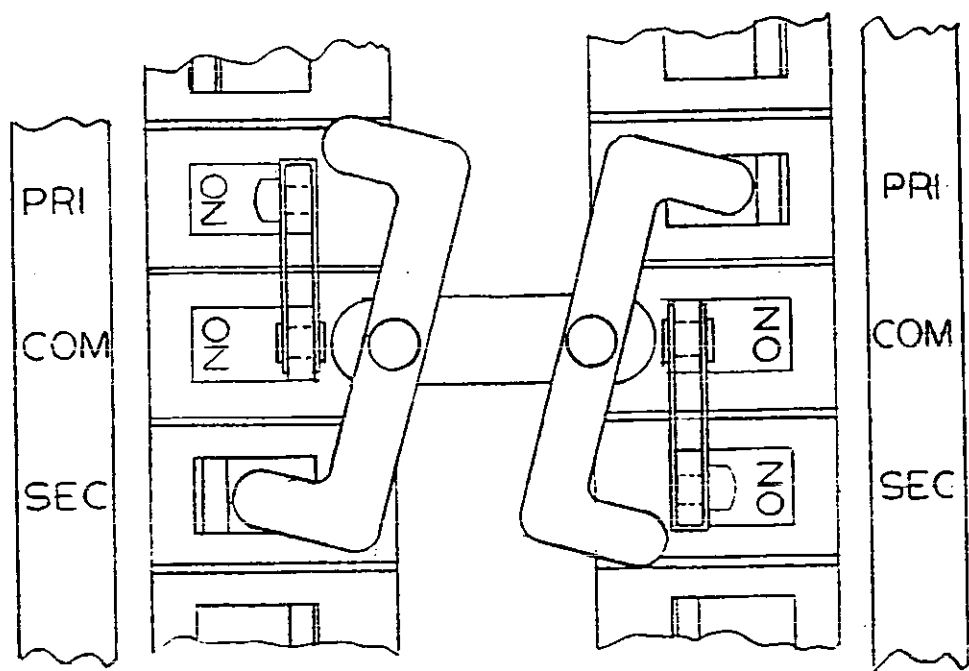
MIL-P-24175/5B (SHIPS)



**FIGURE 2**

Figure 2 - Mounting dimensions.

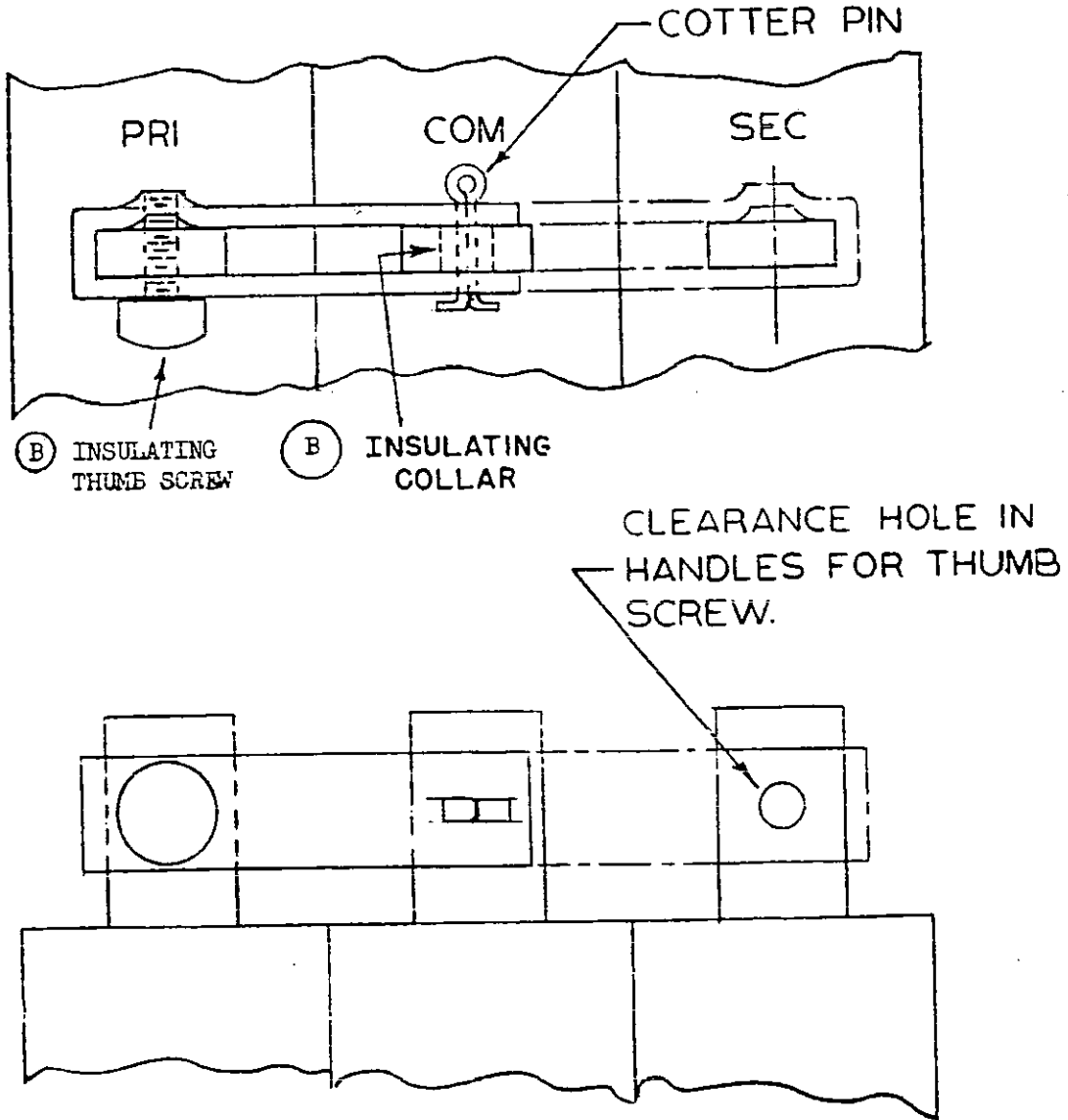
MIL-P-24175/5B(SHIPS)



589289

Figure 3 - Interlocking bar.

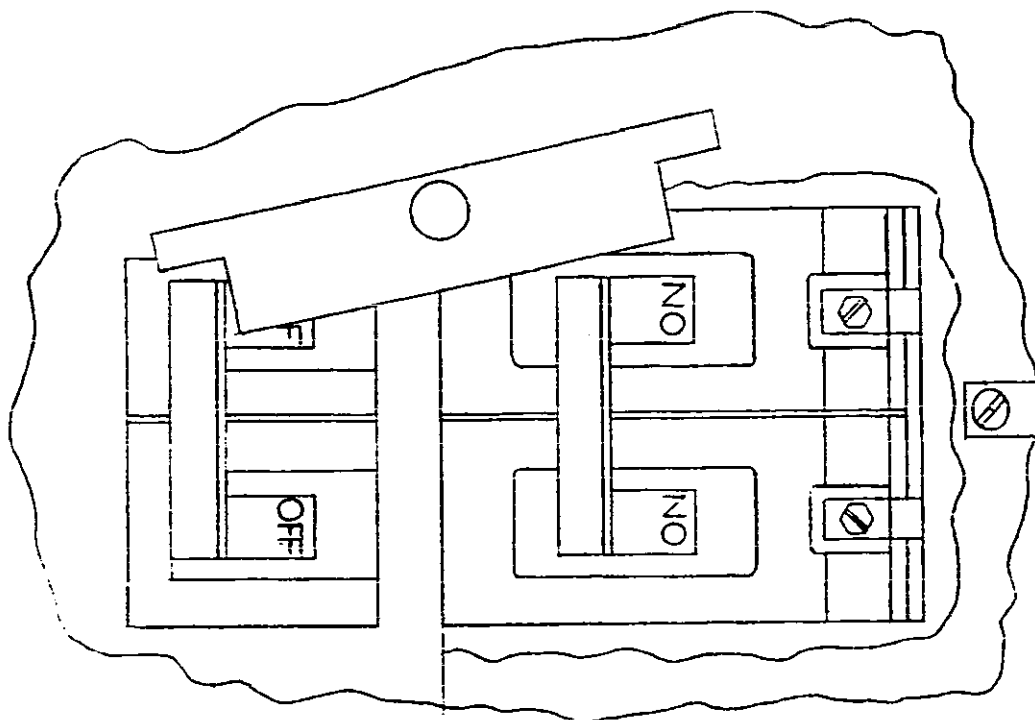
MIL-P-24175/5B(SHIPS)



882908

Figure 4 - Interlocking handle yoke.

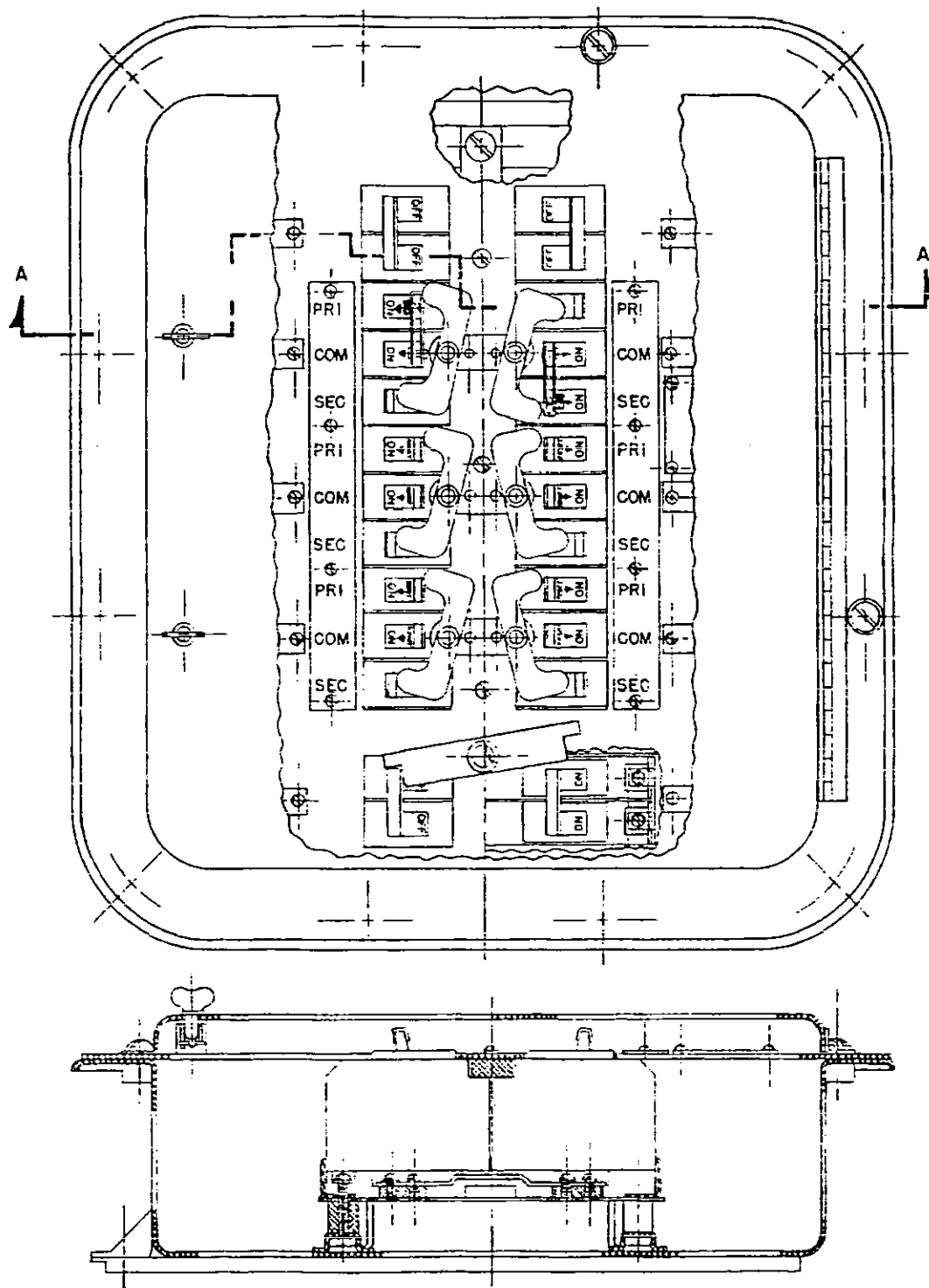
MIL-P-24175/5B (SHIPS)



SH9291

Figure 5 - Mechanical interlocking bar.

MIL-P-24175/5B(SHIPS)



SH 10223

SECTION A - A

Figure 6 - Typical enclosure arrangement.

(B)

MIL-P-24175/5B(SHIPS)

**REQUIREMENTS:**

1. Enclosure: Overall dimensions shall be approximately 19-1/2 inches high by 17-1/2 inches wide by 5 inches deep, including cover, non-watertight construction. A hinged cover, for access to circuit breakers, shall be held shut by two quick-lock-unlock-type fasteners. Identification plates identifying function of groups of circuit breakers and individual breakers shall be mounted on breaker holddown plate adjacent to respective breaker as shown on figures 1, 3 and 6.
2. Circuit breakers and busses: Shall be arranged and installed in the relative locations shown on figure 1. "OFF" position of breakers shall be to the left.
3. Circuit breakers, power supply: Type NLB-1 of MIL-C-17588 (4 required), furnished by installing activity.
4. Circuit breakers, filament transfer: Type ALB-1 with 5 ampere trip element, of MIL-C-17588 (22 required), furnished by installing activity.
5. Two-pole handle yokes: For supply, spare breaker, and identification light to be furnished by installing activity (4 required).
6. Interlocking handle yokes: Shall be provided (see figure 4) for attachment to the handle of each circuit breaker marked "COM". Yoke and thumb screw shall permit either "PRI" and "COM" or "SEC" and "COM" circuit breakers to be locked together. This interlock is intended to prevent circuit breaker marked "COM" from being inadvertently left on when it is desired to completely de-energize the running light circuit (6 required). Material for insulating thumb screw and insulating collar shall be plastic type MAI-60 of MIL-M-14, or type III, grade E of MIL-M-20693.
7. Interlocking bar, for each service: Shall be installed (see figure 3) to prevent both PRI and SEC circuit breakers from being turned on at the same time (6 required).
8. Mechanical interlocking bar: Shall be installed between power supply circuit breakers (see figure 5) to prevent both alternate and normal power supplies from being turned on at the same time.
9. Wiring: Shall be as shown on figure 1. Output wiring from circuit breakers to be installed by shipbuilder in accordance with navigation lights control diagram for ship on which panel is to be installed.
10. First article sample: The first article sample when specified (see MIL-P-24175) shall be furnished complete as illustrated by figure 6 including mounting base, buswork lugs (when required) terminal assemblies, circuit breakers interlocks and so forth.

Military part number

M24175/5-001

Preparing activity:  
Navy - SH  
(Project 6110-N159)