

(A) This document has been approved for public release and sale; its distribution is unlimited.

MIL-P-24175/2A(SHIPS)
 27 August 1971
 SUPERSEDING
 MIL-P-24175/2(SHIPS)
 15 September 1967

MILITARY SPECIFICATION SHEET

(A) PANEL, POWER SUPPLY AND CONTROL FOR NAVIGATION LIGHTS, N.W.T.,
 10 AMPERES, 120 VOLTS A.C., 60 HERTZ
 3 PHASE BUS, 8 CIRCUITS, SYMBOL NO. 940.1

The complete requirements for procuring the panel described herein shall consist of this document and the latest issue of MIL-P-24175.

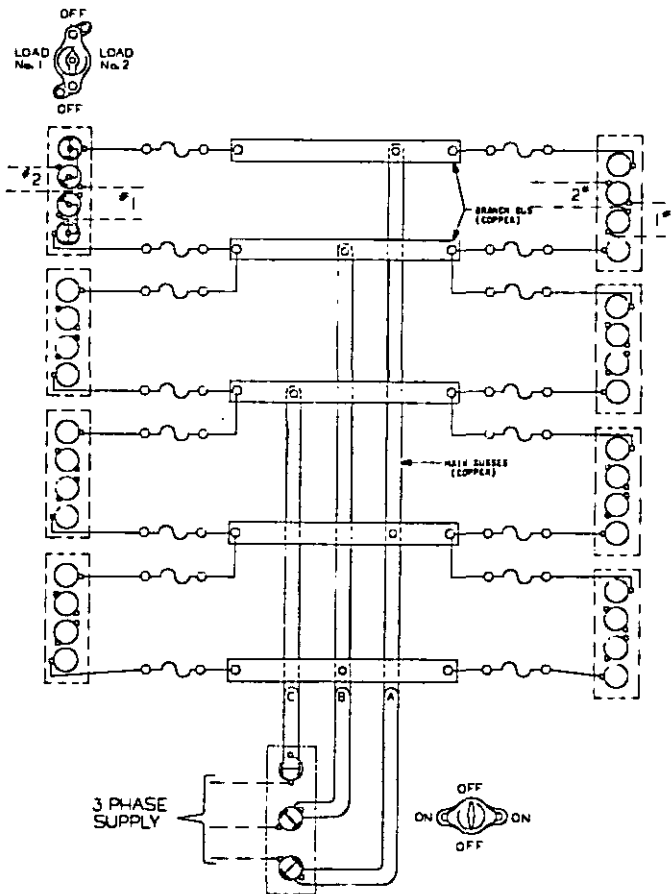
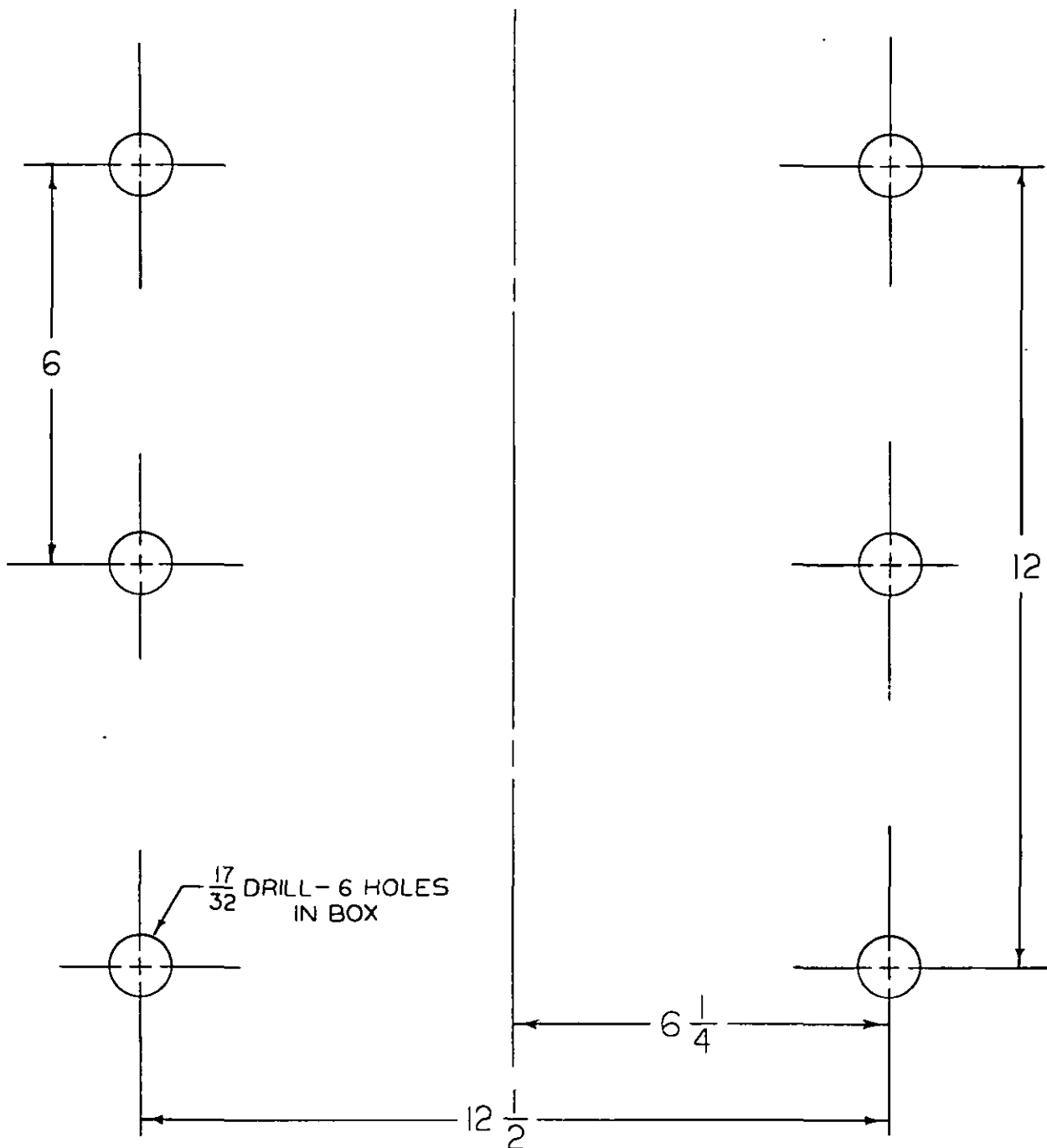


Figure 1 - Panel, power supply and control for navigation lights, N.W.T.,
 3 phase bus, 8 circuits, symbol No. 940.1.

(A) Denotes changes.

PSC 6110

MIL-P-24175/2A (SHIPS)



MOUNTING BOLTS SHALL BE $\frac{1}{2}$ - 13 HEX. HEAD
(FURNISHED BY INSTALLING ACTIVITY)

0282

Figure 2 - Mounting dimensions.

REQUIREMENTS:

- Enclosure: Overall dimensions shall be approximately 16 inches high by 14 inches wide by 4 inches deep, non-watertight construction. Note: A typical panel is shown on figure 1 of MIL-P-24175.
- Switches, fuses, busses, and connectors: Shall be arranged and installed in the relative locations shown on figure 1. "OFF" position of switches shall be at the top.
- ① Fuse clip blocks and connecting busses: Fuse clip blocks shall be grouped together in a centralized location, and fuses shall be made accessible through a hinged cover in the main box cover. Fuse clip blocks and connecting busses shall be suitably mounted on insulating blocks as required for proper clearances and creepages between phases and ground. Fuse clip, style FC21CF of MIL-P-21346.
- Switches: Shall be base mounted and operated by handles in cover via self-aligning coupler arrangement. The bottom left-hand switch shall have a crank-type handle (for "man overboard" flashing operation).
- Switch, power supply: Rotary snap, T.P.S.T., type 1SR3A4 of MIL-S-15291 (1 required).
- Switch, filament transfer: Rotary snap, D.P.D.T., type 1SR2B4A of MIL-S-15291 (8 required).
- ① Wiring: Shall be as shown on figure 1. Internal wiring, as required, shall be type B of MIL-W-16878. Output wiring from transfer switches to be installed by shipbuilder in accordance with navigation lights control diagram for ship on which panel is to be installed.

Military part number

M24175/2-001

Preparing activity:
Navy - SH
(Project 6110-N155)