

MIL-L-2898D (SHIPS)
5 November 1968
~~SUPERSEDING~~
MIL-L-2898C (SHIPS)
8 March 1961
(See 6.2)

MILITARY SPECIFICATION
LOCKS, FLUSH, METAL AND WOOD DOOR
AND DRAWER, NAVAL SHIPBOARD

1. SCOPE

1.1 Scope. This specification covers flush metal and wood door and drawer locks for Naval shipboard use.

1.2 Classification. Locks shall be of the following types, as specified (see 6.1):

Type A - Lock, metal and wood doors.
Type B - Lock, metal and wood drawers.

2. APPLICABLE DOCUMENTS

2.1 Specifications, standards, drawings and publications. Not applicable.

2.2 Other publications. The following document forms a part of this specification to the extent specified herein. Unless otherwise indicated, the issue in effect on date of invitation for bids shall apply.

UNIFORM CLASSIFICATION COMMITTEE
Uniform Freight Classification Rules

(Application for copies should be addressed to the Uniform Classification Committee, 202 Union Station, 516 West Jackson Boulevard, Chicago, Illinois 60606.)

(Technical society and technical association specifications and standards are generally available for reference from libraries. They are also distributed among technical groups and using Federal agencies.)

3. REQUIREMENTS

3.1 Material. Material shall be as hereinafter specified. Material not definitely specified shall be of the quality best suited for the purpose intended.

3.1.1 Case. The lock case and screws shall be made of brass and shall be nickel-plated 0.0002 inch thick. A satin finish shall be required on only those portions of the lock which will be visible after installation, when the door or drawer, on which the lock is fitted, is closed.

3.1.2 Springs. Springs shall be made of brass or phosphor bronze.

3.1.3 Other parts. Other parts shall be made of corrosion-resisting material, other than bronze, satisfactory for the purpose intended.

3.1.4 Keys. Keys for lever-type cylinder locks shall be made of flat steel, zinc coated. Paracentric keys for pin-tumbler type cylinder locks shall be made of brass, bronze, nickel-silver or aluminum having a minimum hardness of 75 on the Rockwell "B" scale.

3.2 Construction. Locks shall be provided with square selvages. Screw holes shall be drilled and countersunk to fit the screws furnished. Springs shall be strong. Specific requirements as to the interior mechanism of the lock have been omitted so that manufacturers may design such parts in general accordance with their best practice. A minus tolerance of 0.03 inch will be permitted in the diameter of cylinders and a plus or minus tolerance of 0.01 inch will be permitted in other dimensions.

MIL-L-2898D (SHIPS)

3.3 Key changes. Unless otherwise specified in the contract or order (see 6.1), each lock in any one order shall be manufactured so as to be opened by its own key and not by the keys of the other locks in the same order, unless the number of locks exceeds the number of changes specified, in which case duplicates will be permitted.

3.4 Marking. Each lock and key shall be stamped with the name of the manufacturer.

3.5 Type A locks for metal and wood doors. Type A locks (see figure 1) shall be of the solid square box cylinder type with heavy dead bolt shooting right and left and shall be controlled by three or more levers or pin tumblers capable of 1200 changes. Unless otherwise specified in the contract or order, (see 6.1), four 6-40, round-head machine screws, 5/8 inch long, shall be furnished with each lock. The bolt shall be approximately 7/8 by 3/16 inch and shall shoot 1/4 to 5/16 inch. The length of the cylinder shall be as specified (see 6.1). Backset or drop shall be 5/8 inch. Weight complete, with three keys, shall be not less than 3.4 ounces.

3.6 Type B locks for metal and wood drawers. Type B locks (see figure 2) shall be of the screwed box cylinder type with heavy dead bolt controlled by three or more levers or pin tumblers capable of 1200 changes. Unless otherwise specified in the contract or order, (see 6.1), four 6-40, round-head machine screws, 1/4 inch long, with nuts, shall be furnished with each lock. The bolt shall be approximately 7/8 by 3/16 inch and shall shoot approximately 1/4 inch. The length of the cylinder shall be as specified (see 6.1). Backset or drop shall be 3/4 inch. Weight complete, with three keys, shall be not less than 2.8 ounces.

3.7 Workmanship. The workmanship shall be first class in every respect.

4. QUALITY ASSURANCE PROVISIONS

4.1 Responsibility for inspection. Unless otherwise specified in the contract or purchase order, the supplier is responsible for the performance of all inspection requirements as specified herein. Except as otherwise specified in the contract or order, the supplier may use his own or any other facilities suitable for the performance of the inspection requirements specified herein, unless disapproved by the Government. The Government reserves the right to perform any of the inspections set forth in the specification where such inspections are deemed necessary to assure supplies and services conform to prescribed requirements.

4.2 Sampling for quality conformance.

4.2.1 Lot. All locks of the same size and type presented for delivery at one time shall be considered a lot.

4.2.2 Sampling for quality conformance inspection.

4.2.2.1 Sampling for examination. A random sample of locks shall be selected from each lot for examination specified in 4.3.1.

Table I - Sampling for visual and dimensional examination

Number of locks in lot	Number of locks in sample	Acceptance number (defective)	Rejection number (defective)
15 and under	7	0	1
16 to 40	10	0	1
41 to 110	15	0	1
111 to 300	25	1	2
301 to 500	35	1	2
501 to 800	50	2	3
801 to 1300	75	3	4
1301 and over	110	4	5

4.2.2.2 Sampling for tests. Eleven locks and eleven keys not fitted to the eleven locks shall be selected from each lot and shall be tested to verify conformance with 3.3.

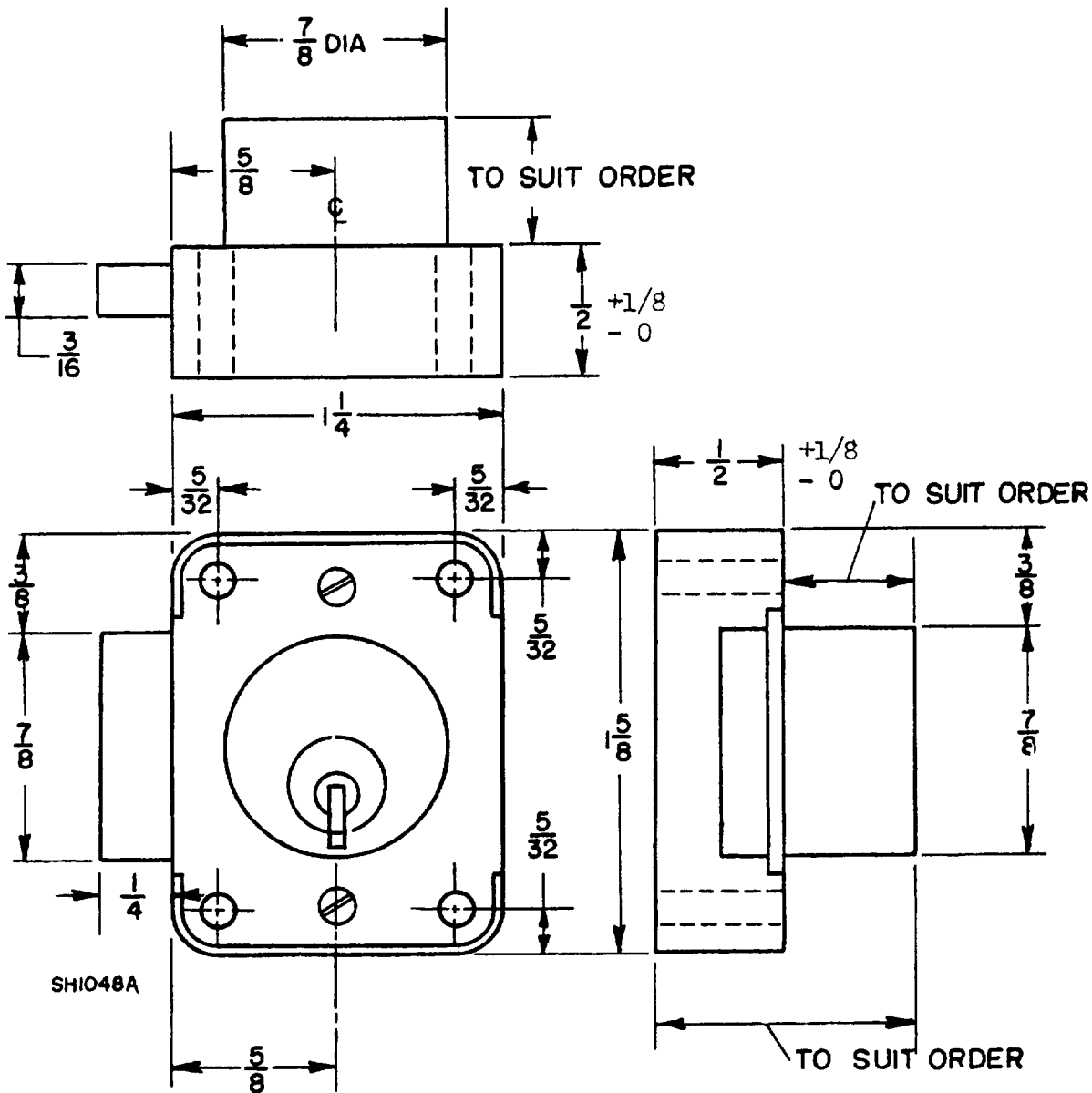


Figure 1 - Type A locks for metal and wood doors.

MIL-L-2898D (SHIPS)

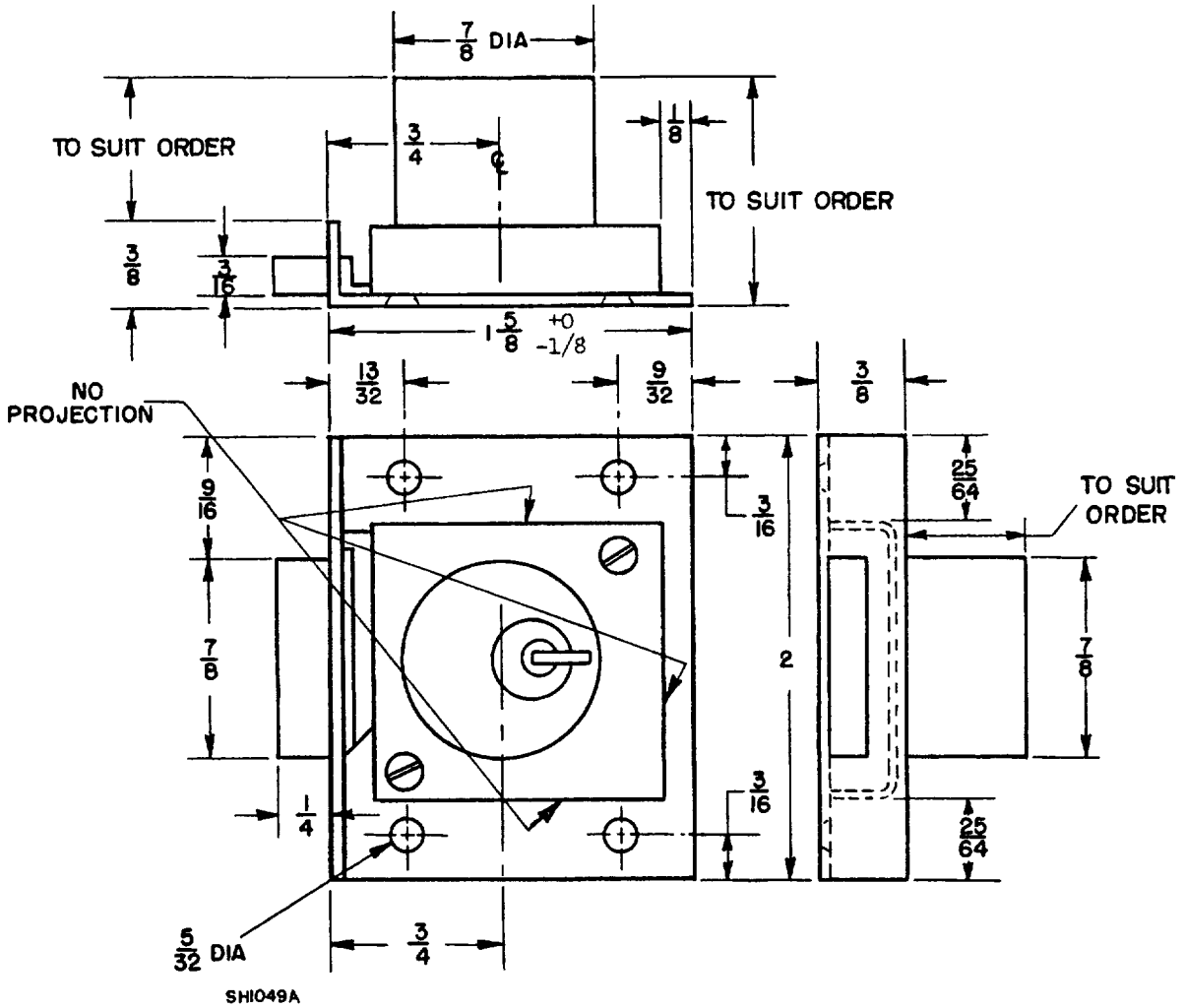


Figure 2 - Type B locks for metal and wood drawers.

4.3 Quality conformance inspection

4.3.1 Visual and dimensional examination. Each of the sample locks selected in accordance with 4.2.2.1 shall be visually and dimensionally examined to verify compliance with this specification and Table II. Each key in the sample shall be fitted to its own lock to verify its use. Any lock in the sample containing one or more visual or dimensional defects or which does not function properly shall be rejected. If the number of defective locks in any sample exceeds the acceptance number for that sample, the lot represented by the sample shall be rejected.

Table II. Classification of defects.

Critical defects	
None defined	
Major defects	
101	Case material is not brass.
102	Case mounting screws are not brass
103	Case is not nickel-plated .0002 inch
104	Screws are not nickel-plated .0002 inch
105	Mounting screws not provided
106	Length of cylinder is not as specified in contract/order.
107	Back set or drop, Type A, is not 5/8 inch
108	Back set or drop, Type B, is not as specified 3/4 inch.
109	Operating keys (3) are not supplied, are damaged, do not perform the lock-and-unlock functions.
110	Operating keys for lever-type cylinder locks are not zinc-coated.
111	Springs are not brass or phosphor bronze.
112	Manufacturer's name is not stamped on lock and 3 keys.

4.4 Test. Each sample key selected in accordance with 4.2.2.2 shall be fitted to each sample lock. If any key fits any lock other than the lock for which it is intended, the lot represented by the sample shall be rejected.

5. PREPARATION FOR DELIVERY

(The preparation for delivery requirements specified herein apply only for direct Government procurements.)

5.1 Domestic shipment and early use.

5.1.1 Locks.

5.1.1.1 Preservation and packaging. Preservation and packaging shall be sufficient to afford adequate protection against corrosion, deterioration and physical damage during shipment from the supply source to the using activity and until early use.

5.1.1.2 Packing. Packing shall be accomplished in a manner which will insure acceptance by common carrier and will afford protection against physical damage during direct shipment from the supply source to the using activity for early installation. The shipping containers or method of packing shall conform to the Uniform Freight Classification Rules or other carrier regulations as applicable to the mode of transportation.

5.1.1.3 Marking. Shipment marking information shall be provided on interior packages and exterior shipping containers in accordance with the contractor's commercial practice. The information shall include nomenclature, Federal stock number and type, contract or order number, contractor's name and destination.

5.2 Domestic shipment and storage or overseas shipment requirements.

(5.2.1 The following provides various levels of protection during domestic shipment and storage or overseas shipment, which may be required when procurement is made by a Government activity (see 6.1).

5.2.1.1 Preservation, packaging, packing, and marking. Locks shall be preserved and packaged Level A or C as specified, packed Level A or B as specified and marked in accordance with the requirements of MIL-H-22173, type II material).

MIL-L-2898D(SHIPS)

5.3 Use of polystyrene (loose-fill) material.

5.3.1 For domestic shipment and early equipment installation and level C packaging and packing. Unless otherwise approved by the procuring activity (see 6.1), use of polystyrene (loose-fill) material for domestic shipment and early equipment installation and level C packaging and packing applications such as cushioning, filler and dunnage is prohibited. When approved, unit packages and containers (interior and exterior) shall be marked and labeled as follows

"CAUTION

Contents cushioned etc. with polystyrene (loose-fill) material.
Not to be taken aboard ship.
Remove and discard loose-fill material before shipboard storage.
If required, recushion with cellulosic material bound fiber, fiberboard or transparent flexible cellular material."

5.3.2 For level A packaging and level A and B packing. Use of polystyrene (loose-fill) material is prohibited for level A packaging and level A and B packing applications such as cushioning, filler and dunnage

6. NOTES

6.1 Ordering data. Procurement documents should specify the following:

- (a) Title, number, and date of this specification.
- (b) Type required (see 1.2).
- (c) If locks and keys are to be interchangeable (see 3.3)
- (d) Number of changes of levers or pin tumblers (see 3.5 and 3.6). The number of changes specified is the maximum number of which the locks are capable, so that the changes should never exceed the number specified herein.
- (e) Length of cylinder (see 3.5 and 3.6).
- (f) Preservation, packaging, packing or marking requirements other than those required by paragraph 5.1 (see 5.2)
- (g) When use of polystyrene is permitted (see 5.3).

6.2 CHANGES FROM PREVIOUS ISSUE THE OUTSIDE MARGINS OF THIS DOCUMENT HAVE BEEN MARKED "#" TO INDICATE WHERE CHANGES (DELETIONS, ADDITIONS, ETC.) FROM THE PREVIOUS ISSUE HAVE BEEN MADE. THIS HAS BEEN DONE AS A CONVENIENCE ONLY AND THE GOVERNMENT ASSUMES NO LIABILITY WHATSOEVER FOR ANY INACCURACIES IN THESE NOTATIONS. BIDDERS AND CONTRACTORS ARE CAUTIONED TO EVALUATE THE REQUIREMENTS OF THIS DOCUMENT BASED ON THE ENTIRE CONTENT AS WRITTEN IRRESPECTIVE OF THE MARGINAL NOTATIONS AND RELATIONSHIP TO THE LAST PREVIOUS ISSUE

Preparing activity:
Navy - SH
(Project 5340-N033)

SPECIFICATION ANALYSIS SHEET		Form Approved Budget Bureau No 119-R004	
<u>INSTRUCTIONS</u>			
This sheet is to be filled out by personnel either Government or contractor, involved in the use of the specification in procurement of products for ultimate use by the Department of Defense. This sheet is provided for obtaining information on the use of this specification which will insure that suitable products can be procured with a minimum amount of delay and at the least cost. Comments and the return of this form will be appreciated. Fold on lines on reverse side, staple in corner and send to preparing activity (as indicated on reverse hereof)			
SPECIFICATION			
ORGANIZATION (of submitter)		CITY AND STATE	
CONTRACT NO	QUANTITY OF ITEMS PROCURED	DOLLAR AMOUNT	
\$			
MATERIAL PROCURED UNDER A			
<input type="checkbox"/> DIRECT GOVERNMENT CONTRACT <input type="checkbox"/> SUBCONTRACT			
1 HAS ANY PART OF THE SPECIFICATION CREATED PROBLEMS OR REQUIRED INTERPRETATION IN PROCUREMENT USE?			
A GIVE PARAGRAPH NUMBER AND WORDING			
B RECOMMENDATIONS FOR CORRECTING THE DEFICIENCIES			
2 COMMENTS ON ANY SPECIFICATION REQUIREMENT CONSIDERED TOO RIGID			
3 IS THE SPECIFICATION RESTRICTIVE?			
<input type="checkbox"/> YES <input type="checkbox"/> NO IF "YES", IN WHAT WAY?			
4 REMARKS (Attach any pertinent data which may be of use in improving this specification. If there are additional papers, attach to form and place both in an envelope addressed to preparing activity)			
SUBMITTED BY (Printed or typed name and activity)		DATE	

DD FORM 1426
1 APR 63REPLACES NAVSHIPS FORM 4863, WHICH IS OBSOLETE
(NAVSHIPS OVPRT 12-66)

FOLD

**DEPARTMENT OF THE NAVY
NAVAL SHIP ENGINEERING CENTER
WASHINGTON, D C 20360**

**POSTAGE AND FEES PAID
NAVY DEPARTMENT**

OFFICIAL BUSINESS

**COMMANDER NAVAL SHIP ENGINEERING CENTER
DOD STANDARDIZATION PROGRAM AND DOCUMENTS BRANCH
DEPARTMENT OF THE NAVY
WASHINGTON, D C 20360**

FOLD

MIL-L-2898D SH)
AMENDMENT 1
17 April 1989

MILITARY SPECIFICATION

LOCKS, FLUSH, METAL AND WOOD DOOR
AND DRAWER, NAVAL SHIPBOARD

This amendment forms a part of MIL-L-2898(SH), dated 5 November 1968, and is approved for use by the Naval Sea Systems Command, Department of the Navy, and is available for use by all Departments and Agencies of the Department of Defense.

PAGE 1

2.1. Delete and substitute:

"2 1 Government documents.

2 1 1 Specifications. The following specifications, form a part of this document to the extent specified herein. Unless otherwise specified, the issues of these documents shall be those listed in the issue of the Department of Defense Index of Specifications and Standards (DoDISS) and supplement thereto, cited in the solicitation.

SPECIFICATIONS

MILITARY

MIL-L-2898/1 - Lock, Flush, Type A, Dead Bolt.
MIL-L-2898/2 - Lock, Flush, Type B, Dead Bolt."

Preparing activity
Navy - SH
Agent:
DLA - IS

(Project 5340-1881)

AMSC N/A

DISTRIBUTION STATEMENT A

Approved for public release; distribution is unlimited

FSC 5340