

INCH POUND

MIL-I-45932  
AMENDMENT 2  
17 OCTOBER 1997

MILITARY SPECIFICATION

INSERT, SCREW THREAD - THIN WALL, LOCK IN

This amendment forms a part of MIL-I-45932, dated 21 APRIL 1971,  
and is approved for use by all Departments and Agencies of the  
Department of Defense.

PAGE 1

Change FSC from 5340 to 5325.

PAGE 18

Delete in its entirety and replace with the attached page 18.

Custodians:

Army - AR  
Navy - AS  
Air Force - 99

Preparing Activity:

DLA-IS

(Project 5325-0395-01)

Review activity:

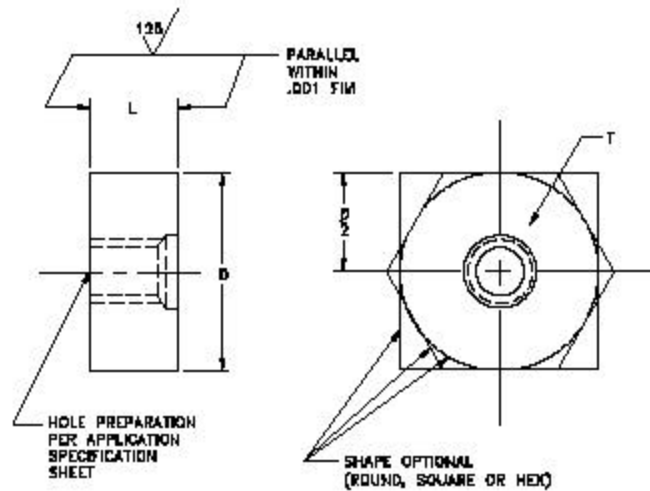
Army - AT, AV, CR4, MI  
Navy - MC, OS, YD1  
Air Force - 82  
NSA - NS

AMSC N/A

FSC 5325

DISTRIBUTION STATEMENT A. Approved for public release; distribution is unlimited.

## MIL-I-45932



## Notes:

## 1. Dimensions:

T - Nominal thread diameter of applicable insert external thread.

D - 4 x T. (Optional 2 x T may be used).

(a) L - Length of applicable insert plus .020 for rotational resistance tests (see 3.9.3)

(b) L - Length of applicable insert plus .063 for internal locking and breakaway torque tests (3.7.6)

(b) L - Length of applicable insert plus .063 for axial and pullout tests (3.9.1), (3.9.2).

## 2. Material:

- \* (a) Aluminum alloy, 2024-T4 per QQ-A-225/6 (bar) (UNS A92024).
- \* (b) Aluminum alloy, 2024-T4 per QQ-A-225/6 (bars and rods) (UNS A92024).
- \* (c) Aluminum alloy 5083-H321 per QQ-A-250/6 (UNS A95083). For pullout test ( 3.9.2 )

Optional material: 6061-R6 per AMS4117 or QQ-A-225/8 or 6061-T651 per AMS4128 or QQ-A-225/8.

FIGURE 2. Torque and axial load test blocks.