

MIL-F-85731/2
14 April 1986

MILITARY SPECIFICATION

FASTENER, ELECTRONIC EQUIPMENT, POSITIVE SELF-LOCKING, FORCE LIMITING

This specification is approved for use by all Departments and Agencies of the Department of Defense. The complete requirements for procuring the fastener described herein shall consist of this document and the latest issue of the specification MIL-F-85731.

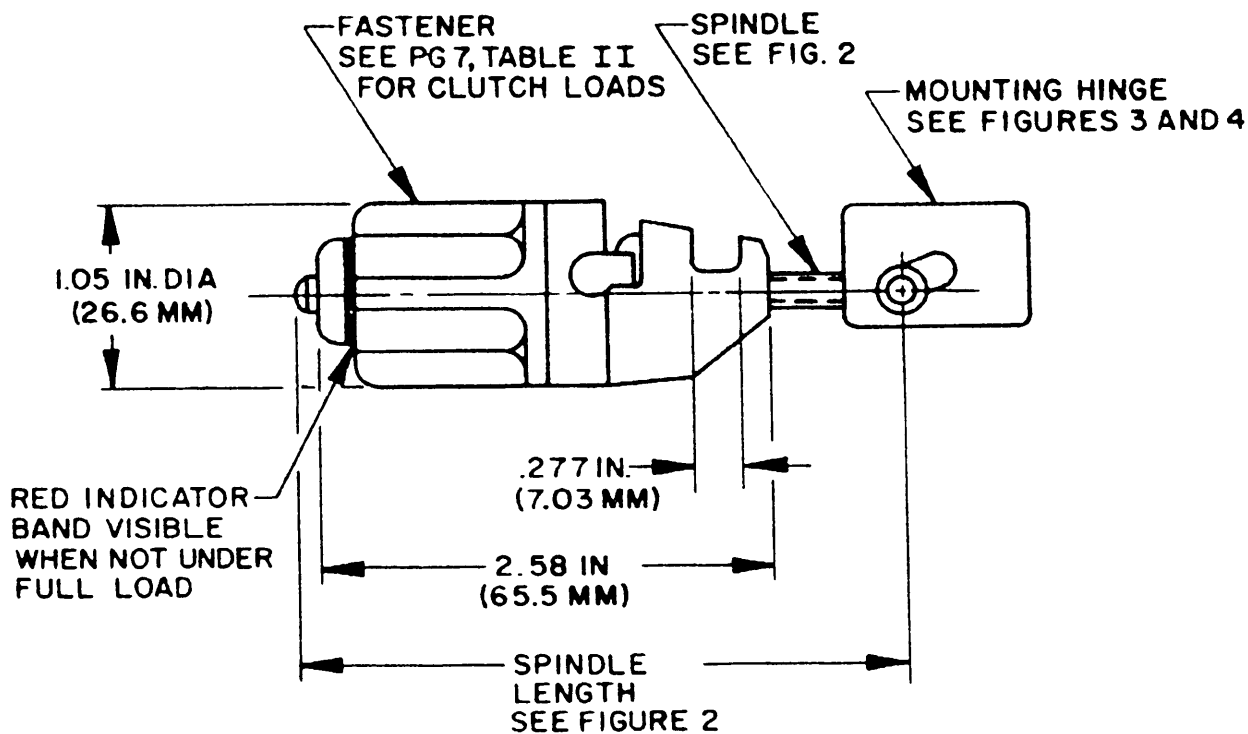


FIGURE 1. General configuration.

AMSC N/A

FSC 5340

DISTRIBUTION STATEMENT A. Approved for public release; distribution is unlimited

MIL-F-85731/2

NOTES

- 1 Dimensions are in inches, millimeters in parenthesis.
2. Tolerances are .XX \pm .01(.3), .XXX (.12), \pm 1/2°, unless otherwise specified.
3. Calculated weight is 22 lbs. (99.8 gr) varies with mounting hinge.
- 4 Meets all requirements of ARINC 404A

FIGURE 1. General configuration - continued

MIL-F-85732/2

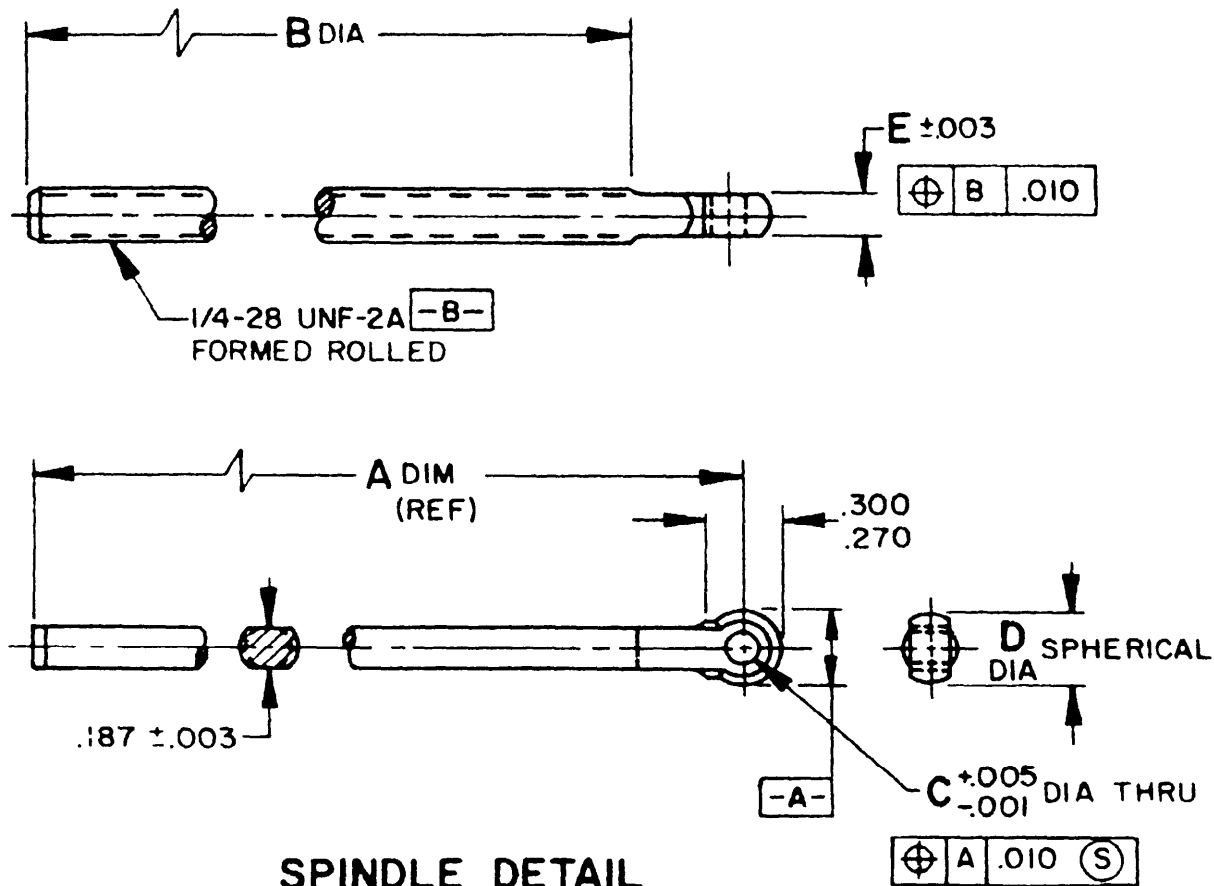
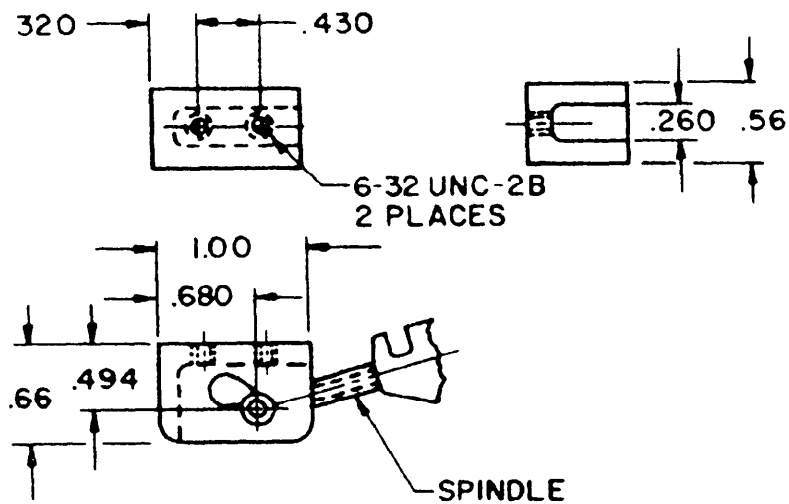


TABLE I. Spindle sizes and dimensions.

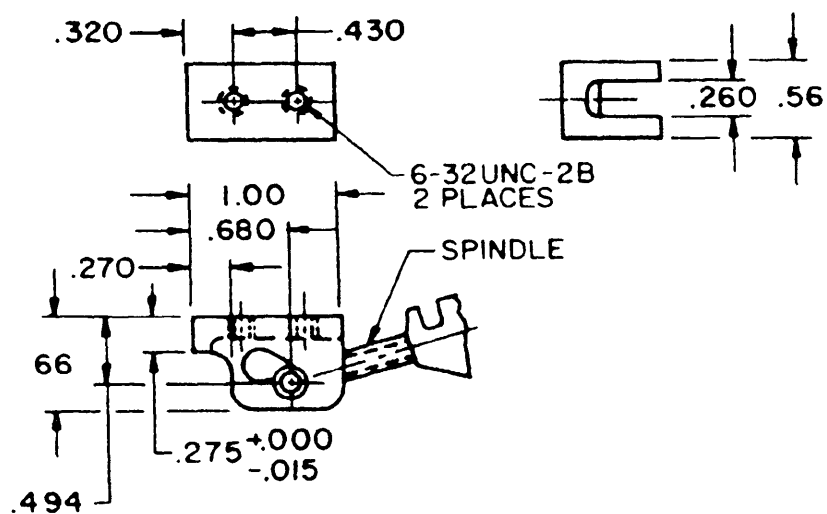
Size	A	B	C	D	E	Hinge Type
1	2.74	2.17	.129	.300	.187	C-D-E
2	2.99	2.42	.129	.300	.187	C-D-E
3	3.24	2.67	.129	.300	.187	ALL
4	2.74	2.17	.159	.328	.167	C-D-E
5	2.99	2.42	.159	.328	.167	C-D-E
6	3.24	2.67	.159	.328	.167	ALL
7	3.24	2.67	.159	.328	.167	ALL
8	3.60	3.03	.159	.328	.167	ALL

FIGURE 2. Spindle sizes 1 through 8.

MIL-F-85731/2



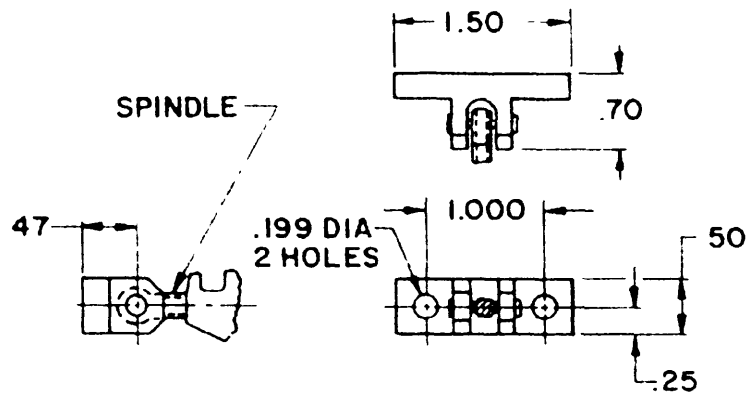
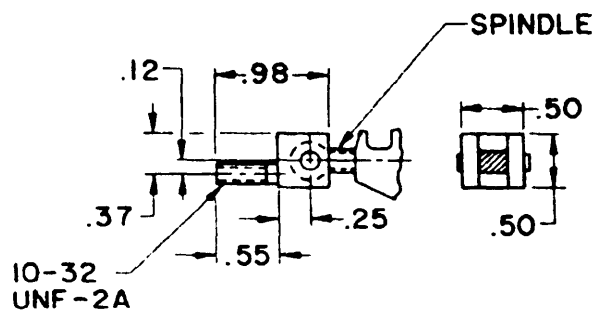
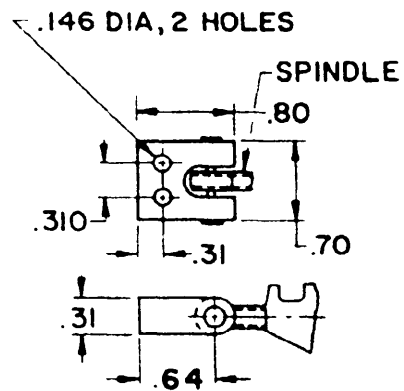
TYPE A



TYPE B

FIGURE 3. Mounting hinge types A and B.

MIL-F-85731/2

TYPE CTYPE DTYPE EFIGURE 4. Mounting hinges types C, D and E.

MIL-F-85731/2

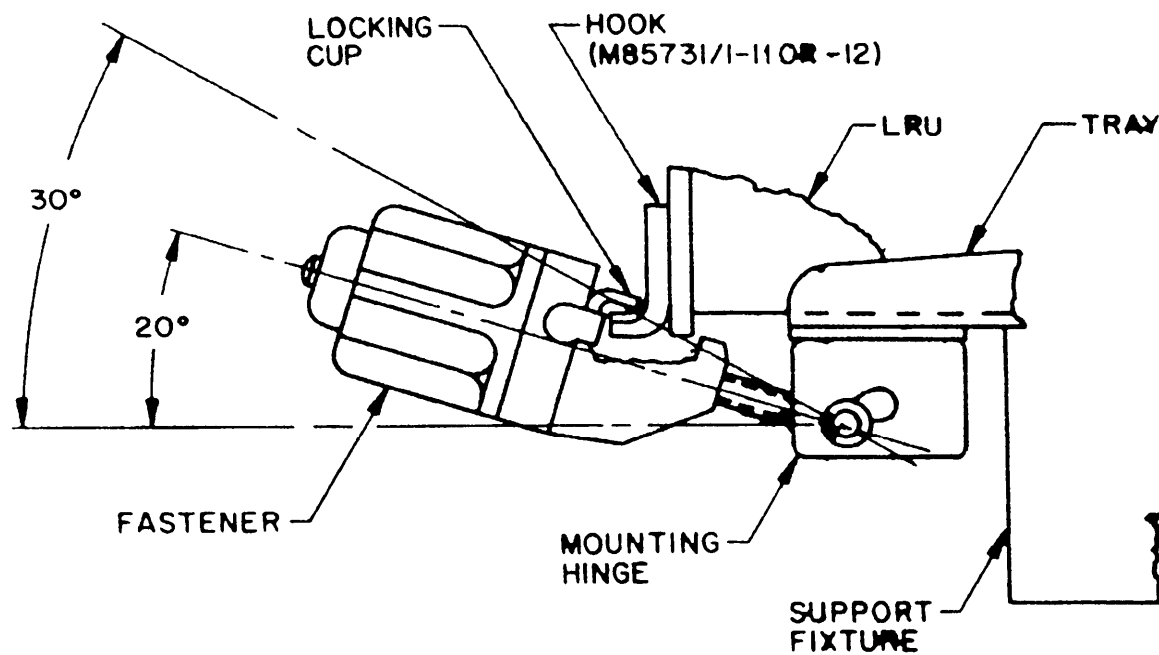


FIGURE 5 Fastener test fixture.

MIL-F-85731/2

TABLE II. Dash numbers and descriptive information.

Dash Number	Clutch Load (LBS)	Spindle Size	Mounting Hinge Type
01	50	1	D
-02	50	2	D
-03	50	3	D
-04	50	1	E
-05	50	2	E
-06	50	3	E
-07	75	1	D
-08	75	2	D
-09	75	3	D
-10	75	1	E
-11	75	2	E
-12	75	3	E
13	100	1	D
-14	100	2	D
-15	100	3	D
-16	100	1	E
-17	100	2	E
-18	100	3	E
-19	150	6	A
-20	150	7	A
-21	150	8	A

Dash Number	Clutch Load (LBS)	Spindle Size	Mounting Hinge Type
-22	150	6	B
-23	150	7	B
-24	150	8	B
-25	150	4	C
-26	150	5	C
-27	150	6	C
-28	150	7	C
-29	150	8	C
-30	200	6	A
-31	200	7	A
-32	200	8	A
-33	200	6	B
-34	200	7	B
-35	200	8	B
-36	200	4	C
-37	200	5	C
-38	200	6	C
-39	200	7	C
-40	200	8	C

MIL-F-85731/2

REQUIREMENTS

Meets all requirements specified on MIL-F-85731 Fastener, Positive Locking, Electronic Equipment, General Specification For

Materials:

- Fastener: Outer Shells 360 or 380 Aluminum Alloy Die Cast or 303 CRES per QQ-S-763
- Spindle: Size 1, 2, 3, 4, 5, 6 and 8; 303 CRES per QQ-S-763 Size 7 Stainless Steel
- Hinge: Type A; 2024 Aluminum Alloy per QQ-A-225/6
Type B, C, D and E, 6061-T4 Aluminum Alloy per QQ-A-250/11

Finish:

- Fastener: Anodize per MIL-A-8625, Type II, Class 2 or Passivate per QQ-P-35
- Spindle: Passivate per QQ-P-35
- Hinge: Type A, B, C and E; Anodize per MIL-A-8625, Type II Class 2
Type D; Passivate per QQ-P-35

Preparing Activity:
Navy - AS
(Project No. 5340-1641)

Custodians
Army - ER
Navy - AS
AF - 11