

MIL-F-39000/3C

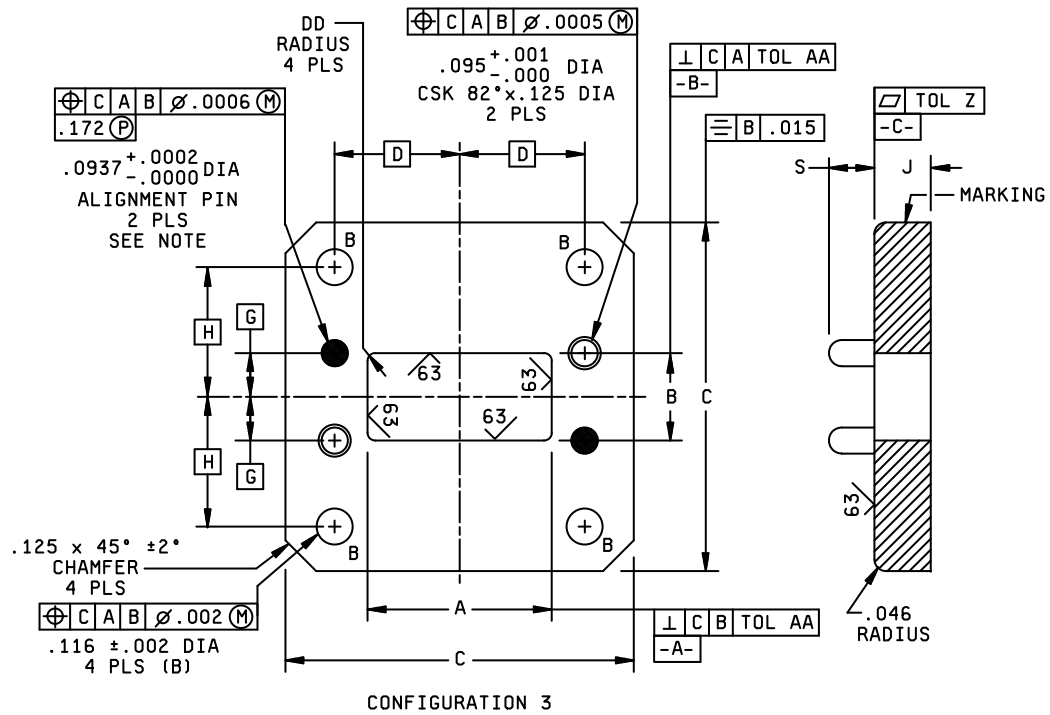
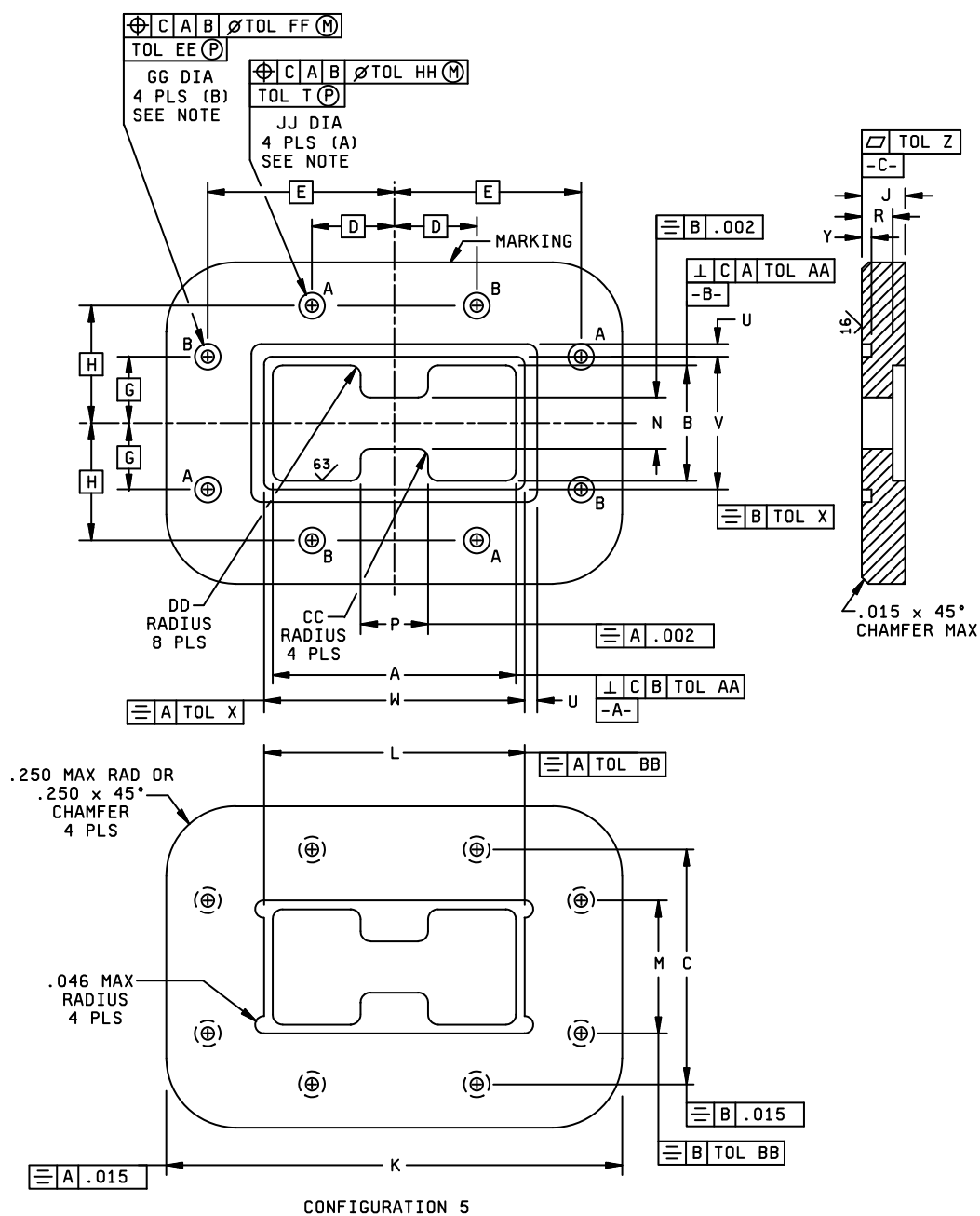


FIGURE 1. Flange -Continued.

MIL-F-39000/3C

FIGURE 1. Flange -Continued.

MIL-F-39000/3C

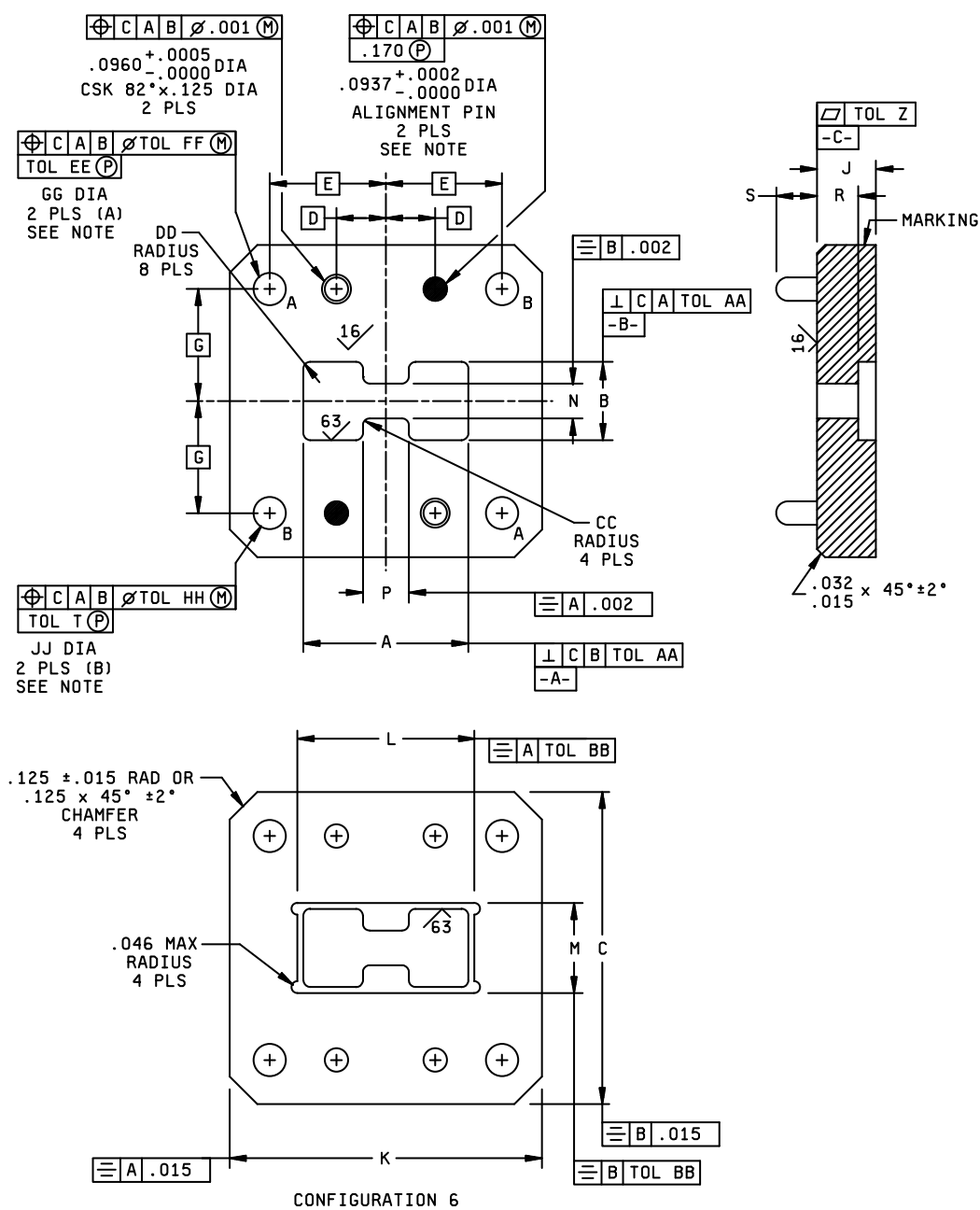


FIGURE 1. Flange -Continued.

MIL-F-39000/3C

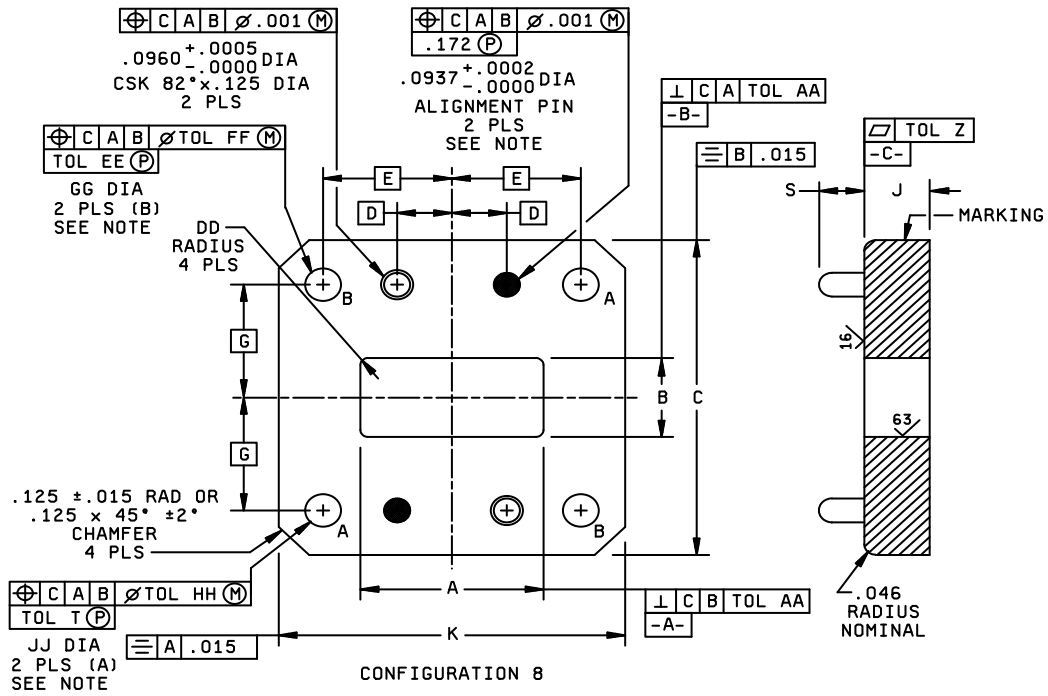


FIGURE 1. Flange -Continued

MIL-F-39000/3C

TABLE I. Part number dimensions and material.

Part number M39000/3-			Part number M39000/4-			Config- uration	Dimensions 1/ 2/ 3/	
Dash No 4/	Used with		Dash No 5/	Used with			A	B
	Waveguide M23351/4-	Mating flange M39000/3-		Waveguide M23351/4-	Mating flange M39000/3-			
001	017	001	002	018, 019 , 020	002	1	6.167 ± .005 (156.64) (.13)	2.868 ± .005 (72.85) (.13)
004	021	004	005	022, 023, 024	005	1	3.455 ± .004 (87.76) (.10)	1.607 ± .004 (40.82) (.10)
007	025	007	008	026, 027, 028	008	2	2.590 ± .004 (65.79) (.10)	1.205 ± .004 (30.61) (.10)
010	029	010	011	030, 031, 032	011	2	1.480 ± .003 (37.59) (.08)	.688 ± .003 (17.48) (.08)
013	033	013	014	034, 035, 036	014	2	1.090 ± .003 (27.69) (.08)	.506 ± .003 (12.85) (.08)
016	037	016	017	038, 039, 040	017	3	.797 ± .002 (20.24) (.05)	.427 ± .002 (10.85) (.05)
019	041	019	020	042, 043, 044	020	3	.557 ± .002 (14.15) (.05)	.305 ± .002 (7.75) (.05)
022	045	022	023	046, 047, 048	023	3	.373 ± .001 (9.47) (.03)	.219 ± .001 (5.56) (.03)
024	025	024	025	026, 027, 028	025	4	2.590 ± .004 (65.79) (.10)	1.205 ± .004 (30.61) (.10)
026	025	028	027	026, 027, 028	029	4	2.590 ± .004 (65.79) (.10)	1.205 ± .004 (30.61) (.10)
028	025	026	029	026, 027, 028	027	4	2.590 ± .004 (65.79) (.10)	1.205 ± .004 (30.61) (.10)
030	029	030	031	030, 031, 032	031	4	1.480 ± .003 (37.59) (.08)	.688 ± .003 (17.48) (.08)
032	029	034	033	030, 031, 032	035	4	1.480 ± .003 (37.59) (.08)	.688 ± .003 (17.48) (.08)
034	029	032	035	030, 031, 032	033	4	1.480 ± .003 (37.59) (.08)	.688 ± .003 (17.48) (.08)
036	033	036	037	034, 035, 036	037	4	1.090 ± .003 (27.69) (.08)	.506 ± .003 (12.85) (.08)
038	033	040	039	034, 035, 036	041	4	1.090 ± .003 (27.69) (.08)	.506 ± .003 (12.85) (.08)
040	033	038	041	034, 035, 036	039	4	1.090 ± .003 (27.69) (.08)	.506 ± .003 (12.85) (.08)
042	049	042	043	050, 051, 052	043	4	1.025 ± .003 (26.04) (.08)	.475 ± .003 (12.06) (.08)
044	049	046	045	050, 051, 052	047	4	1.025 ± .003 (26.04) (.08)	.475 ± .003 (12.06) (.08)
046	049	044	047	050, 051, 052	045	4	1.025 ± .003 (26.04) (.08)	.475 ± .003 (12.06) (.08)

See footnotes at end of table I

MIL-F-39000/3C

TABLE I. Part number dimensions and material. Continued.

Part number M39000/3-			Part number M39000/4-			Config- uration	Dimensions <u>1/</u> <u>2/</u> <u>3/</u>	
Dash No <u>4/</u>	Used with		Dash No <u>5/</u>	Used with			A	B
	Waveguide M23351/4-	Mating flange M39000/3-		Waveguide M23351/4-	Mating flange M39000/3-			
048	025	048	049	026, 027, 028	048	5	2.590 ± .004 (65.79) (.10)	1.205 ± .004 (30.61) (.10)
050	025	052	051	026, 027, 028	053	5	2.590 ± .004 (65.79) (.10)	1.205 ± .004 (30.61) (.10)
052	025	050	053	026, 027, 028	051	5	2.50 ± .004 (65.79) (.10)	1.205 ± .004 (30.61) (.10)
054	029	054	055	030, 031, 032	055	5	1.480 ± .003 (37.59) (.08)	.688 ± .003 (17.48) (.08)
056	029	058	057	030, 031, 032	059	5	1.480 ± .003 (37.59) (.08)	.688 ± .003 (17.48) (.08)
058	029	056	059	030, 031, 032	057	5	1.480 ± .003 (37.59) (.08)	.688 ± .003 (17.48) (.08)
060	033	060	061	034, 035, 036	061	5	1.090 ± .003 (27.69) (.08)	.506 ± .003 (12.85) (.08)
062	033	064	063	034, 035, 036	065	5	1.090 ± .003 (27.69) (.08)	.506 ± .003 (12.85) (.08)
064	033	062	065	034, 035, 036	063	5	1.090 ± .003 (27.69) (.08)	.506 ± .003 (12.85) (.08)
066	049	066	067	050, 051, 052	067	5	1.025 ± .003 (26.04) (.08)	.475 ± .0032 (12.06) (.08)
068	049	070	069	050, 051, 052	071	5	1.025 ± .003 (26.04) (.08)	.475 ± .0032 (12.06) (.08)
070	049	068	071	050, 051, 052	069	5	1.025 ± .003 (26.04) (.08)	.475 ± .0032 (12.06) (.08)
072	037	072	073	038, 039. 040	073	6	.691 ± .003 (17.55) (.08)	.321 ± .003 (8.15) (.08)
074	037	076	075	038, 039. 040	077	6	↑	↑
076	037	074	077	038, 039. 040	075	6	↑	↑
078	037	078	079	038, 039. 040	079	7	↓	↓
080	037	082	081	038, 039. 040	083	7	↓	↓
082	037	080	083	038, 039. 040	081	7	.691 ± .003 (17.55) (.08)	.321 ± .003 (8.15) (.08)
084	045	084	085	046, 047, 048	085	8	.373 ± .001 (9.47) (.03)	.219 ± .001 (5.56) (.03)
086	045	088	087	046, 047, 048	089	8	.373 ± .001 (9.47) (.03)	.219 ± .001 (5.56) (.03)
088	045	086	089	046, 047, 048	087	8	.373 ± .001 (9.47) (.03)	.219 ± .001 (5.56) (.03)

See footnotes at end of table I

MIL-F-39000/3C
TABLE I. Part number dimensions and material. Continued.

Dash No 4/	Dash No 5/	Dimensions 1/ 2/ 3/								
		C ± .015 (.38)	D BSC.	E BSC.	F BSC.	G BSC.	H BSC.	J ± .015 (.38)	K ± .015 (.38)	L
001	002	5.000 (127.00)	.978 (24.84)	2.932 (74.47)	3.682 (93.52)	1.030 (26.16)	2.030 (51.56)	1.000 (25.40)	8.312 (211.12)	6.428 ± .005 (163.27) (.13)
004	005	3.750 (95.25)	.546 (13.87)	1.638 (41.61)	2.263 (57.48)	.629 (15.98)	1.379 (35.03)	.750 (19.05)	5.438 (138.13)	3.629 ± .004 (92.18) (.10)
007	008	2.156 (54.76)	.821 (20.85)	1.571 (39.90)	----	.427 (10.85)	.877 (22.28)	.750 (19.05)	3.547 (90.09)	2.759 ± .004 (70.08) (.10)
010	011	1.594 (40.49)	.437 (11.10)	1.000 (25.40)	----	.353 (8.97)	.603 (15.32)	.500 (12.70)	2.391 (60.73)	1.616 ± .003 (41.05) (.08)
013	014	1.391 (35.33)	.375 (9.52)	.790 (20.07)	----	.263 (6.68)	.500 (12.70)	.500 (12.70)	1.969 (50.01)	1.197 ± .003 (30.40) (.08)
016	017	1.375 (34.92)	.530 (13.46)	----	-----	.216 (5.49)	.500 (12.70)	.188 (4.78)	1.375 (34.92)	-----
019	020	1.00 (25.40)	.388 (9.86)	----	----	.1545 (3.924)	.344 (8.74)	.188 (4.78)	1.00 (25.40)	-----
022	023	.875 (22.22)	.3125 (7.938)	----	----	.111 (2.82)	.280 (7.11)	.188 (4.78)	.875 (22.22)	----
024	025	2.160 (54.86)	.821 (20.85)	1.571 (39.90)	---	.427 (10.85)	.877 (22.28)	.375 (9.52)	3.550 (90.17)	2.754 ± .004 (70.08) (.10)
026	027	2.160 (54.86)	.821 (20.85)	1.571 (39.90)	---	.427 (10.85)	.877 (22.28)	.375 (9.52)	3.550 (90.17)	2.754 ± .004 (70.08) (.10)
028	029	2.160 (54.86)	.821 (20.85)	1.571 (39.90)	---	.427 (10.85)	.877 (22.28)	.375 (9.52)	3.550 (90.17)	2.754 ± .004 (70.08) (.10)
030	031	2.000 (50.80)	.500 (12.70)	1.125 (28.58)	----	.438 (11.13)	.750 (19.05)	.250 (6.35)	2.750 (69.85)	1.616 ± .003 (41.05) (.08)
032	033	2.000 (50.80)	.500 (12.70)	1.125 (28.58)	----	.438 (11.13)	.750 (19.05)	↑	2.750 (69.85)	1.616 ± .003 (41.05) (.08)
034	035	2.000 (50.80)	.500 (12.70)	1.125 (28.58)	----	.438 (11.13)	.750 (19.05)		2.750 (69.85)	1.616 ± .003 (41.05) (.08)
036	037	1.391 (35.33)	.312 (7.92)	.837 (21.26)	---	.263 (6.68)	.545 (13.84)		1.969 (50.01)	1.197 ± .003 (30.40) (.08)
038	039	1.391 (35.33)	↑	.837 (21.26)	---	.263 (6.68)	.545 (13.84)		1.969 (50.01)	1.197 ± .003 (30.40) (.08)
040	041	1.391 (35.33)		.837 (21.26)	---	.263 (6.68)	.545 (13.84)		1.969 (50.01)	1.197 ± .003 (30.40) (.08)
042	043	1.500 (38.10)		.813 (20.65)	----	.312 (7.92)	.500 (12.70)	↓	2.125 (53.98)	1.134 ± .003 (28.80) (.08)
044	045	1.500 (38.10)	↓	.813 (20.65)	----	.312 (7.92)	.500 (12.70)		2.125 (53.98)	1.134 ± .003 (28.80) (.08)
046	047	1.500 (38.10)	.312 (7.92)	.813 (20.65)	----	.312 (7.92)	.500 (12.70)	.250 (6.35)	2.125 (53.98)	1.134 ± .003 (28.80) (.08)

See footnotes at end of table I

MIL-F-39000/3C
TABLE I. Part number dimensions and material. Continued.

Dash No 4/	Dash No 5/	Dimensions 1/ 2/ 3/								
		C ± .015 (.38)	D BSC.	E BSC.	F BSC.	G BSC.	H BSC.	J ± .015 (.38)	K ± .015 (.38)	L
048	049	2.160 (54.86)	.821 (20.85)	1.571 (39.90)	----	.427 (10.85)	.877 (22.28)	.375 (9.52)	3.550 (90.17)	2.759 ± .004 (70.08) (.10)
050	051	2.160 (54.86)	.821 (20.85)	1.571 (39.90)	----	.427 (10.85)	.877 (22.28)	.375 (9.52)	3.550 (90.17)	2.759 ± .004 (70.08) (.10)
052	053	2.160 (54.86)	.821 (20.85)	1.571 (39.90)	----	.427 (10.85)	.877 (22.28)	.375 (9.52)	3.550 (90.17)	2.759 ± .004 (70.08) (.10)
054	055	2.000 (50.80)	.500 (12.70)	1.125 (28.58)	----	.438 (11.13)	.750 (19.05)	.250 (6.35)	2.750 (69.85)	1.616 ± .003 (41.05) (.08)
056	057	2.000 (50.80)	.500 (12.70)	1.125 (28.58)	----	.438 (11.13)	.750 (19.05)	↑	2.750 (69.85)	1.616 ± .003 (41.05) (.08)
058	059	2.000 (50.80)	.500 (12.70)	1.125 (28.58)	----	.438 (11.13)	.750 (19.05)		2.750 (69.85)	1.616 ± .003 (41.05) (.08)
060	061	1.391 (35.33)	.312 (7.92)	.837 (21.26)	----	.263 (6.68)	.545 (13.84)		1.969 (50.01)	1.197 ± .003 (30.40) (.08)
062	063	1.391 (35.33)	↑	.837 (21.26)	----	.263 (6.68)	.545 (13.84)		1.969 (50.01)	1.197 ± .003 (30.40) (.08)
064	065	1.391 (35.33)		.837 (21.26)	----	.263 (6.68)	.545 (13.84)		1.969 (50.01)	1.197 ± .003 (30.40) (.08)
066	067	1.500 (38.10)		.813 (20.65)	----	.312 (7.92)	.500 (12.70)		2.125 (53.98)	1.134 ± .003 (28.80) (.08)
068	069	1.500 (38.10)	↓	.813 (20.65)	----	.312 (7.92)	.500 (12.70)		2.125 (53.98)	1.134 ± .003 (28.80) (.08)
070	071	1.500 (38.10)	.312 (7.92)	.813 (20.65)	----	.312 (7.92)	.500 (12.70)		2.125 (53.98)	1.134 ± .003 (28.80) (.08)
072	073	1.375 (34.92)	.216 (5.49)	.530 (13.46)	----	.500 (12.70)	----		1.375 (47.92)	.798 ± .003 (20.27) (.08)
074	075	↑	↑	↑	----	↑	----			↑
076	077	↓	↓	↓	----	↓	----			↓
078	079				----		---			
080	081	↓	↓	↓	----	↓	----			↓
082	083	1.375 (34.92)	.216 (5.49)	.530 (13.46)	----	.500 (12.70)	----	.250 (6.35)	1.375 (47.92)	.798 ± .003 (20.27) (.08)
084	085	.875 (22.22)	.111 (2.82)	.312 (7.92)	----	.280 (7.11)	----	.188 (4.78)	.875 (22.22)	----
086	087	.875 (22.22)	.111 (2.82)	.312 (7.92)	----	.280 (7.11)	---	.188 (4.78)	.875 (22.22)	----
088	089	.875 (22.22)	.111 (2.82)	.312 (7.92)	-----	.280 (7.11)	----	.188 (4.78)	.875 (22.22)	----

See footnotes at end of table I

MIL-F-39000/3C

TABLE I. Part number dimensions and material. Continued.

Dash No 4/	Dash No 5/	Dimensions 1/ 2/ 3/						
		M	N	P	R ± .005 (.13)	S ± .005 (.13)	T	U ± .002 (.05)
001	002	3.127 ± .005 (79.43) (.13)	1.219 ± .003 (30.96) (.08)	1.542 ± .003 (39.17) (.08)	.250 (6.35)	----	1.000 (25.40)	----
004	005	1.781 ± .004 (45.24) (.10)	.683 ± .003 (17.35) (.08)	.864 ± .003 (21.95) (.08)	.500 (12.70)	.687 (17.45)	.750 (19.05)	----
007	008	1.374 ± .004 (34.80) (.10)	.512 ± .002 (13.00) (.05)	.648 ± .002 (9.40) (.05)	.500 (12.70)	.687 (17.45)	.750 (19.05)	----
010	011	.824 ± .003 (20.93) (.08)	.292 ± .002 (7.42) (.05)	.370 ± .002 (9.40) (.05)	.375 (9.52)	.437 (11.10)	.500 (12.70)	----
013	014	.613 ± .003 (15.57) (.08)	.215 ± .002 (5.46) (.05)	.272 ± .002 (6.91) (.05)	.375 (9.52)	.437 (11.10)	.500 (12.70)	----
016	017	----	----	----	----	.172 (4.37)	----	----
019	020	----	----	----	----	.172 (4.37)	----	----
022	023	----	----	----	----	.172 (4.37)	----	----
024	025	1.374 ± .004 (34.90) (.10)	.512 ± .002 (13.00) (.05)	.648 ± .002 (16.46) (.05)	.188 (4.78)	---	.375 (9.52)	----
026	027	1.374 ± .004 (34.90) (.10)	.512 ± .002 (13.00) (.05)	.648 ± .002 (16.46) (.05)	.188 (4.78)	----	.375 (9.52)	----
028	029	1.374 ± .004 (34.90) (.10)	.512 ± .002 (13.00) (.05)	.648 ± .002 (16.46) (.05)	.188 (4.78)	----	---	----
030	031	.824 ± .003 (20.93) (.08)	.292 ± .002 (7.42) (.05)	.370 ± .002 (9.40) (.05)	.125 (3.18)	----	.250 (6.35)	----
032	033	.824 ± .003 (20.93) (.08)	.292 ± .002 (7.42) (.05)	.370 ± .002 (9.40) (.05)	.125 (3.18)	----	.250 (6.35)	----
034	035	.824 ± .003 (20.93) (.08)	.292 ± .002 (7.42) (.05)	.370 ± .002 (9.40) (.05)	.125 (3.18)	----	---	----
036	037	.613 ± .003 (15.57) (.08)	.215 ± .002 (5.46) (.05)	.272 ± .002 (6.91) (.05)	.188 (4.78)	----	.250 (6.35)	----
038	039	.613 ± .003 (15.57) (.08)	.215 ± .002 (5.46) (.05)	.272 ± .002 (6.91) (.05)	.188 (4.78)	----	.250 (6.35)	----
040	041	.613 ± .003 (15.57) (.08)	.215 ± .002 (5.46) (.05)	.272 ± .002 (6.91) (.05)	.188 (4.78)	----	----	----
042	043	.584 ± .003 (14.83) (.08)	.191 ± .003 (4.85) (.08)	.256 ± .003 (6.50) (.08)	.125 (3.18)	----	.250 (6.35)	----
044	045	.584 ± .003 (14.83) (.08)	.191 ± .003 (4.85) (.08)	.256 ± .003 (6.50) (.08)	.125 (3.18)	----	.250 (6.35)	----
046	047	.584 ± .003 (14.83) (.08)	.191 ± .003 (4.85) (.08)	.256 ± .003 (6.50) (.08)	.125 (3.18)	----	---	----

See footnotes at end of table I

MIL-F-39000/3C
TABLE I. Part number dimensions and material. Continued.

Dash No 4/	Dash No 5/	Dimensions 1/ 2/ 3/						
		M	N	P	R ± .005 (.13)	S ± .005 (.13)	T	U ± .002 (.05)
048	049	1.374 ± .004 (34.90) (.10)	.512 ± .002 (13.00) (.05)	.648 ± .002 (16.46) (.05)	.188 (4.78)	----	.375 (9.52)	.094 (2.39)
050	051	1.374 ± .004 (34.90) (.10)	.512 ± .002 (13.00) (.05)	.648 ± .002 (16.46) (.05)	.188 (4.78)	----	.375 (9.52)	.094 (2.39)
052	053	1.374 ± .004 (34.90) (.10)	.512 ± .002 (13.00) (.05)	.648 ± .002 (16.46) (.05)	.188 (4.78)	----	----	.094 (2.39)
054	055	.824 ± .003 (20.93) (.08)	.292 ± .002 (7.42) (.05)	.370 ± .002 (9.40) (.05)	.125 (3.18)	----	.250 (6.35)	.112 (2.84)
056	057	.824 ± .003 (20.93) (.08)	.292 ± .002 (7.42) (.05)	.370 ± .002 (9.40) (.05)	.125 (3.18)	---	.250 (6.35)	.112 (2.84)
058	059	.824 ± .003 (20.93) (.08)	.292 ± .002 (7.42) (.05)	.370 ± .002 (9.40) (.05)	.125 (3.18)	----	---	.112 (2.84)
060	061	.613 ± .003 (15.57) (.08)	.215 ± .002 (5.46) (.05)	.272 ± .002 (6.91) (.05)	.188 (4.78)	----	.250 (6.35)	.094 (2.39)
062	063	.613 ± .003 (15.57) (.08)	.215 ± .002 (5.46) (.05)	.272 ± .002 (6.91) (.05)	.188 (4.78)	----	.250 (6.35)	.094 (2.39)
064	065	.613 ± .003 (15.57) (.08)	.215 ± .002 (5.46) (.05)	.272 ± .002 (6.91) (.05)	.188 (4.78)	----	---	.094 (2.39)
066	067	.584 ± .003 (14.83) (.08)	.191 ± .003 (4.85) (.08)	.256 ± .003 (7.48) (.08)	.125 (3.18)	----	.250 (6.35)	.112 (2.84)
068	069	.584 ± .003 (14.83) (.08)	.191 ± .003 (4.85) (.08)	.256 ± .003 (7.48) (.08)	.125 (3.18)	----	.250 (6.35)	.112 (2.84)
070	071	.584 ± .003 (14.83) (.08)	.191 ± .003 (4.85) (.08)	.256 ± .003 (7.48) (.08)	.125 (3.18)	---	---	.112 (2.84)
072	073	.428 ± .003 (10.87) (.08)	.136 ± .002 (3.45) (.05)	.173 ± .002 (4.39) (.05)	.188 (4.78)	.170 (4.32)	---	---
074	075	↑	↑	↑	↑	↑	.250 (6.35)	---
076	077	↑	↑	↑	↑	↑	---	---
078	079	↑	↑	↑	↑	↑	---	.094 (2.39)
080	081	↓	↓	↓	↓	↓	.250 (6.35)	.094 (2.39)
082	083	.428 ± .003 (10.87) (.08)	.136 ± .002 (3.45) (.05)	.173 ± .002 (4.39) (.05)	.188 (4.78)	.170 (4.32)	---	.094 (2.39)
084	085	----	----	---	----	.172 (4.37)	---	----
086	087	----	----	----	----	.172 (4.37)	.188 (4.78)	----
088	089	----	----	---	---	.172 (4.37)	---	---

See footnotes at end of table I

MIL-F-39000/3C

TABLE I. Part number dimensions and material. Continued.

Dash No 4/	Dash No 5/	Dimensions 1/ 2/ 3/						
		V ± .004 (.10)	W ± .004 (.10)	X	Y	Z	AA	BB
001	002	----	----	----	----	.0007 (.018)	.005 (.13)	.005 (.13)
004	005	----	----	----	----	.0007 (.018)	.004 (.10)	.004 (.10)
007	008	----	----	----	----	.0007 (.018)	.004 (.10)	.004 (.10)
010	011	----	----	----	----	.0004 (.010)	.003 (.08)	.003 (.08)
013	014	----	----	----	----	.0004 (.010)	.003 (.08)	.003 (.08)
016	017	----	----	----	----	.005 (.13)	.002 (.05)	----
019	020	----	----	----	----	.005 (.13)	.002 (.05)	----
022	023	----	----	----	----	.005 (.13)	.001 (.03)	----
024	025	----	----	----	----	.0003 (.008)	.004 (.10)	.003 (.08)
026	027	----	----	----	----	↑	.004 (.10)	↑
028	029	----	----	----	----	↓	.004 (.10)	↓
030	031	----	----	----	----	↓	.003 (.08)	↓
032	033	----	----	----	----	↓	↑	↓
034	035	----	----	----	----	.0003 (.008)	↑	↓
036	037	----	----	----	----	.0004 (.010)	↑	↓
038	039	----	----	----	----	.0004 (.010)	↑	↓
040	041	----	----	----	----	.0004 (.010)	↑	↓
042	043	----	----	----	----	.0003 (.008)	↑	↓
044	045	----	----	----	----	.0003 (.008)	↓	↓
046	047	----	----	----	----	.0003 (.008)	.003 (.08)	.003 (.08)

See footnotes at end of table I

MIL-F-39000/3C
TABLE I. Part number dimensions and material. Continued

Dash No 4/	Dash No 5/	Dimensions 1/ 2/ 3/						
		V ± .004 (.10)	W ± .004 (.10)	X	Y	Z	AA	BB
048	049	1.320 (33.53)	2.710 (68.83)	.004 (.10)	.056 ± .002 (1.42) (.05)	.003 (.008)	.004 (.10)	.004 (.10)
050	051	1.320 (33.53)	2.710 (68.83)	↑	.056 ± .002 (1.42) (.05)	↑	.004 (.10)	.004 (.10)
052	053	1.320 (33.53)	2.710 (68.83)		.056 ± .002 (1.42) (.05)		.004 (.10)	.004 (.10)
054	055	.960 (24.38)	1.750 (44.45)		.048 ± .002 (1.22) (.05)		.003 (.08)	.003 (.08)
056	057	.960 (24.38)	1.750 (44.45)		.048 ± .002 (1.22) (.05)	↓	↑	↑
058	059	.960 (24.38)	1.750 (44.45)		.048 ± .002 (1.22) (.05)	.0003 (.008)		
060	061	.630 (16.00)	1.214 (30.84)		.056 ± .002 (1.42) (.05)	.0004 (.010)		
062	063	.630 (16.00)	1.214 (30.84)		.056 ± .002 (1.42) (.05)	.0004 (.010)		
064	065	.630 (16.00)	1.214 (30.84)		.056 ± .002 (1.42) (.05)	.0004 (.010)		
066	067	.548 (13.92)	1.101 (27.97)		.052 ± .002 (1.32) (.05)	.0003 (.0008)		
068	069	.548 (13.92)	1.101 (27.97)	↓	.052 ± .002 (1.32) (.05)	↑		
070	071	.548 (13.92)	1.101 (27.97)	.004 (.10)	.052 ± .002 (1.32) (.05)			
072	073	---	---	----	----			
074	075	---	---	----	----			
076	077	---	---	----	----			
078	079	.441 (11.20)	.811 (20.60)	.004 (.10)	.056 ± .002 (1.42) (.05)			
080	081	.441 (11.20)	.811 (20.60)	.004 (.10)	.056 ± .002 (1.42) (.05) -.000	↓	↓	↓
082	083	.441 (11.20)	.811 (20.60)	.004 (.10)	.056 ± .002 (1.42) (.05) -.000	.0003 (.008)	.003 (.08)	.003 (.08)
084	085	---	---	----	----	.005 (.13)	.001 (.03)	----
086	087	---	---	----	----	.005 (.13)	.001 (.03)	----
088	089	---	---	----	----	.005 (.13)	.001 (.03)	---

See footnotes at end of table I

MIL-F-39000/3C
TABLE I. Part number dimensions and material. Continued.

Dash No 4/	Dash No 5/	Dimensions 1/ 2/ 3/						
		CC ± 10%	DD Max	EE	FF	GG	HH	JJ
001	002	.244 (6.20)	.050 (1.27)	---	---	----	---	---
004	005	.137 (3.48)	.050 (1.27)	---	---	----	---	---
007	008	.102 (2.59)	.050 (1.27)	---	---	---	---	---
010	011	.058 (1.47)	.030 (.76)	---	---	---	---	---
013	014	.043 (1.09)	.030 (.76)	---	---	---	---	---
016	017	---	.075 (1.90)	---	---	---	---	---
019	020	---	.060 (1.52)	---	---	---		-----
022	023	---	.060 (1.52)	---	---	---	---	---
024	025	.102 (2.59)	.050 (1.27)	---	.003 (.08)	.145 +.003 (3.68) (.08) -.000	.004 (.10)	.138-32 UNC-2B (3.50)
026	027	.102 (2.59)	.050 (1.27)	.375 (9.52)	.004 (.10)	.138 -32 UNC-2B (3.50)	.004 (.10)	.138-32 UNC-2B (3.50)
028	029	.102 (2.59)	.050 (1.27)	---	.003 (.08)	.145 +.003 (3.68) (.08) -.000	.003 (.08)	.145 +.003 (3.68) (.08) -.000
030	031	.058 (1.47)	.030 (.76)	---	.003 (.08)	.145 +.003 (3.68) (.08) -.000	.004 (.10)	.138-32 UNC-2B (3.50)
032	033	.058 (1.47)	↑	.250 (6.35)	.004 (.10)	.138 -32 UNC-2B (3.50)	.004 (.10)	.138-32 UNC-2B (3.50)
034	035	.058 (1.47)		----	.003 (.08)	.145 +.003 (3.68) (.08) -.000	.003 (.08)	.145 +.003 (3.68) (.08) -.000
036	037	.043 (1.09)		----	.003 (.08)	.145 +.003 (3.68) (.08) -.000	.004 (.10)	.138-32 UNC-2B (3.50)
038	039	.043 (1.09)	↓	.250 (6.35)	.004 (.10)	.138 -32 UNC-2B (3.50)	.004 (.10)	.138-32 UNC-2B (3.50)
040	041	.043 (1.09)	.030 (.76)	---	.003 (.08)	.145 +.003 (3.68) (.08) -.000	.003 (.08)	.145 +.003 (3.68) (.08) -.000

See footnotes at end of table I

MIL-F-39000/3C
TABLE I. Part number dimensions and material. Continued

Dash No 4/	Dash No 5/	Dimensions 1/ 2/ 3/						
		CC ±10%	DD Max	EE	FF	GG	HH	JJ
042	043	.062 (1.57)	.030 (.76)	---	.003(.08)	.145 +.003 (3.68) (.08) -.000	.004 (.10)	.138-32 UNC-2B (3.50)
044	045	.062 (1.57)	.030 (.76)	.250 (6.35)	.004 (.10)	.138-32 UNC-2B (3.50)	.004 (.10)	.138-32 UNC-2B (3.50)
046	047	.062 (1.57)	.030 (.76)	----	.003(.08)	.145 +.003 (3.68) (.08) -.000	.003 (.08)	.145 +.003 (3.68) (.08) -.000
048	049	.102 (2.59)	.050 (1.27)	----	.003(.08)	.145 +.003 (3.68) (.08) -.000	.004 (.10)	.138-32 UNC-2B (3.50)
050	051	.102 (2.59)	.050 (1.27)	.250 (6.35)	.004 (.10)	.138-32 UNC-2B (3.50)	.004 (.10)	.138-32 UNC-2B (3.50)
052	053	.102 (2.59)	.050 (1.27)	----	.003(.08)	.145 +.003 (3.68) (.08) -.000	.003 (.08)	.145 +.003 (3.68) (.08) -.000
054	055	.058 (1.47)	.030 (.76)	---	.003(.08)	.145 +.003 (3.68) (.08) -.000	.004 (.10)	.138-32 UNC-2B (3.50)
056	057	.058 (1.47)	↑	.250 (6.35)	.004 (.10)	.138-32 UNC-2B (3.50)	.004 (.10)	.138-32 UNC-2B (3.50)
058	059	.058 (1.47)		----	.003(.08)	.145 +.003 (3.68) (.08) -.000	.003 (.08)	.145 +.003 (3.68) (.08) -.000
060	061	.043 (1.09)		----	.003(.08)	.145 +.003 (3.68) (.08) -.000	.004 (.10)	.138-32 UNC-2B (3.50)
062	063	.043 (1.09)		.250 (6.35)	.004 (.10)	.138-32 UNC-2B (3.50)	.004 (.10)	.138-32 UNC-2B (3.50)
064	065	.043 (1.09)	↓	---	.003(.08)	.145 +.003 (3.68) (.08) -.000	.003 (.08)	.145 +.003 (3.68) (.08) -.000
066	067	.062 (1.57)		----	.003(.08)	.145 +.003 (3.68) (.08) -.000	.004 (.10)	.138-32 UNC-2B (3.50)
068	069	.062 (1.57)	.030 (.76)	.250 (6.35)	.004 (.10)	.138-32 UNC-2B (3.50)	.004 (.10)	.138-32 UNC-2B (3.50)
070	071	.062 (1.57)	.030 (.76)	---	.003 (.08)	.145 +.003 (3.68) (.08) -.000	.003 (.08)	.145 +.003 (3.68) (.08) -.000
072	073	.027 (.69)	.027 (.69)	.250 (6.35)	.004 (.10)	.138-32 UNC-2B (3.50)	.003 (.08)	.145 +.003 (3.68) (.08) -.000

See footnotes at end of table I

MIL-F-39000/3C

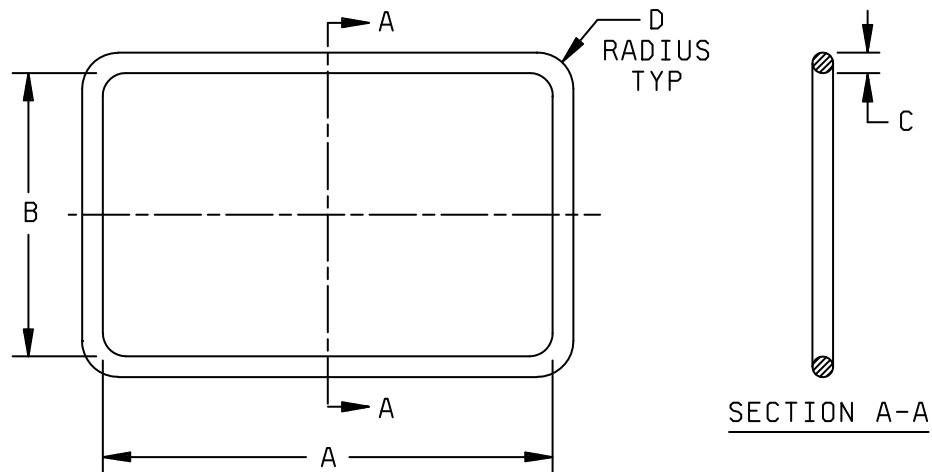
TABLE I. Part number dimensions and material. Continued.

Dash No <u>4/</u>	Dash No <u>5/</u>	Dimensions <u>1/</u> <u>2/</u> <u>3/</u>						
		CC ±10%	DD Max	EE	FF	GG	HH	JJ
074	075	↑	↑	.250 (6.35)	.004 (.10)	.138-32 UNC-2B (3.50)	.004 (.10)	.138-32 UNC-2B (3.50)
076	077			---	.003 (.08)	.145 + .003 (3.68) (.08) -.000	.003 (.08)	.145 + .003 (3.68) (.08) -.000
078	079			.250 (6.35)	.004 (.10)	.138-32 UNC-2B (3.50)	.003 (.08)	.145 + .003 (3.68) (.08) -.000
080	081	↓	↓	.250 (6.35)	.004 (.10)	.138-32 UNC-2B (3.50)	.004 (.10)	.138-32 UNC-2B (3.50)
082	083	.027 (.69)	.020 (.51)	---	.003 (.08)	.145 + .003 (3.68) (.08) -.000	.003 (.08)	.145 + .003 (3.68) (.08) -.000
084	085	----	.032 (.81)	.188 (4.77)	.002 (.05)	.112 -40 UNC-2B (2.84)	.002 (.05)	.116 + .002 (2.95) (.05) -.000
086	087	----	.032 (.81)	.188 (4.77)	.002 (.05)	.112 -40 UNC-2B (2.84)	.002 (.05)	.112 -40 UNC-2B (2.84)
088	089	----	.032 (.81)	----	.002 (.05)	.116 + .002 (2.95) (.05) -.000	.002 (.05)	.116 + .002 (2.95) (.05) -.000

NOTES:

- 1/ Dimensions are in inches.
2/ Metric equivalents are given for general information only and are based upon 1.00 inch = 25.4 mm.
3/ Metric equivalents are in parentheses.
4/ Material shall be aluminum alloy.
5/ Material shall be copper alloy

MIL-F-39000/3C

FIGURE 2. Gasket

Used with part no.	A	B	C Dia.	D
048, 049, 050, 051, 052, 053	$2.710 \pm .005$ (68.83) (.13)	$1.320 \pm .005$ (33.53) (.13)	$.080 \pm .002$ (2.03) (.05)	$.078 \pm .004$ (1.98) (.10)
054, 055, 056, 057, 058, 059	$1.750 \pm .010$ (44.45) (.25) -.000	$.960 \pm .010$ (24.38) (.25) -.000	$.080 \pm .002$ (2.03) (.05)	$.078 \pm .004$ (1.98) (.10)
060, 061, 062, 063, 064, 065	$1.214 \pm .005$ (38.84) (.13)	$.635 \pm .005$ (16.13) (.13)	$.070 \pm .003$ (1.78) (.08)	$.038 \pm .004$ (.97) (.10)
066, 067, 068, 069, 070, 071	$1.106 \pm .005$ (28.09) (.13)	$.553 \pm .005$ (14.05) (.13)	$.080 \pm .002$ (2.03) (.08)	$.038 \pm .004$ (.97) (.10)
078, 079, 080, 081, 082, 083	$.876 \pm .005$ (22.25) (.13)	$.446 \pm .005$ (11.35) (.13)	$.070 \pm .003$ (1.78) (.08)	$.038 \pm .004$ (.97) (.10)

NOTES:

1. Dimensions are in inches.
2. Metric equivalents are given for general information only and are based upon 1.00 inch = 25.4 mm.
3. Metric equivalents are in parentheses.

MIL-F-39000/3C

REQUIREMENTS:

Dimensions are configuration:

Flange: See figure 1 and table I

Gasket: See figure 2.

Material: Metallic alloy as specified in table I.

Materials supplied with flanges: See table II.

Marking:

Part number: M39000/3- (dash number from table I).

Location: See figure 1.

Cross reference and frequency range: See table III.

TABLE II. Item supplied with flanges.

Flange part No. M39000/3-	Gasket	Socket head Cap screw	Spring Lockwasher
001, 002	---	.250-20 UNC-2A 2 in long (6 ea)	.250 x .062 (6 ea)
004, 005	----	.250-20 UNC-2A 1.5 in. long (6 ea)	.250 x .062 (6 ea)
007, 008	---	.138-32 UNC-2A 1.75 in. long (4 ea)	.138 x .031 (4 ea)
010, 011, 013, 014	----	.138-32 UNC-2A 1.25 in. long (4 ea)	.138 x .031 (4 ea)
016, 017, 019, 020, 022, 023	----	.112-40 UNC-2A .50 in. long (2 ea)	.112 x .025 (2 ea)
024, 025, 026, 027, 028, 029	See figure 2 (1 ea)	.138-32 UNC-2A .875 in. long (4 ea) .138-32 UNC-2A .625 in. long (4 ea)	.138 x .031 (4 ea)
030, 031, 032, 033, 034, 035 036, 037, 038, 039, 040, 041 042, 043, 044, 045, 046, 047 048, 049, 050, 051, 052, 053	See figure 2 (1 ea)	.138-32 UNC-2A .875 in. long (4 ea) .138-32 UNC-2A .625 in. long (4 ea)	.138 x .031 (4 ea) .138 x .031 (4 ea)
054, 055, 056, 057, 058, 059 060, 061, 062, 063, 064, 065 066, 067, 068, 069, 070, 071 072, 073, 074, 075, 076, 077	---	.138-32 UNC-2A .625 in. long (2 ea)	.138 x .031 (2 ea)
078, 079, 080, 081, 082, 083	See figure 2 (1 ea)	.138-32 UNC-2A .625 in. long (2 ea)	.138 x .031 (2 ea)
084, 085, 086, 087, 088, 089	----	.112-40 UNC-2A .50 in. long (2 ea)	.112 x .025 (2 ea)

MIL-F-39000/3C

TABLE III. Cross reference and frequency range.

Part number 1/ M39000/3-	AN nomenclature	Frequency range (GHz)
001	UG-1565/U	.84-2.00
002	UG-1566/U	.84-2.00
004	UG-1668/U	1.50-3.60
005	UG-1569/U	1.50-3.60
007	UG-1571/U	2.00-4.80
008	UG-1572/U	2.00-4.80
010	UG-1574/U	3.50-8.20
011	UG-1575/U	3.50-8.20
013	UG-1577/U	4.75-11.00
014	UG-1578/U	4.75-11.00
016	UG-1581/U	7.50-18.00
017	UG-1581/U	7.50-18.00
019	UG-1583/U	11.00-26.50
020	UG-1584/U	11.00-26.50
022	UG-1586/U	18.00-40.00
023	UG-1587/U	18.00-40.00
024, 025, 026, 027, 028, 029, 048, 049, 050, 051, 052, 053	----	2.00-4.80
030, 031, 032, 033, 034, 035, 054, 055, 056, 057, 058, 059	----	3.50-8.20
036, 037, 038, 039, 040, 041, 060, 061, 062, 063, 064, 065	----	4.75-11.00
042, 043, 044, 045, 046, 047, 066, 067, 068, 069, 070, 071	----	4.75-11.00
072, 073, 074, 075, 076, 077, 078, 079, 080, 081, 082, 083	----	7.50-18.00
084, 085, 086, 087, 088, 089	----	18.00-40.00

1/ Dash number 003 (UF-1567/U), 006 (UG-1570/U), 009 (UG-1573/U), 012 (UG-1576/U), 015 (UG-1579/U), 018 (UG-1582/U), 021 (UG-1585/U), and 024 (UG-1588/U) have been deleted from specifications.

Referenced documents. In addition to MIL-DTL-39000, this document references the following: MIL-W-23351/4.

Marginal notations are not used in this revision to identify changes with respect to the previous issue due to the extent of the changes.

Custodians:

Army – CR
Navy – EC
Air Force – 85
DLA – CC

Preparing activity:

DLA- CC
Project number (5985-2009-002)

Review activities:

Army – AR, AV
Navy – AS, CG, MC, OS
Air Force – 19, 99

NOTE: The activities listed above were interested in this document as of the date of this document. Since organizations and responsibilities can change, you should verify the currency of the information above using the ASSIST Online database at <http://assist.daps.dla.mil>.