

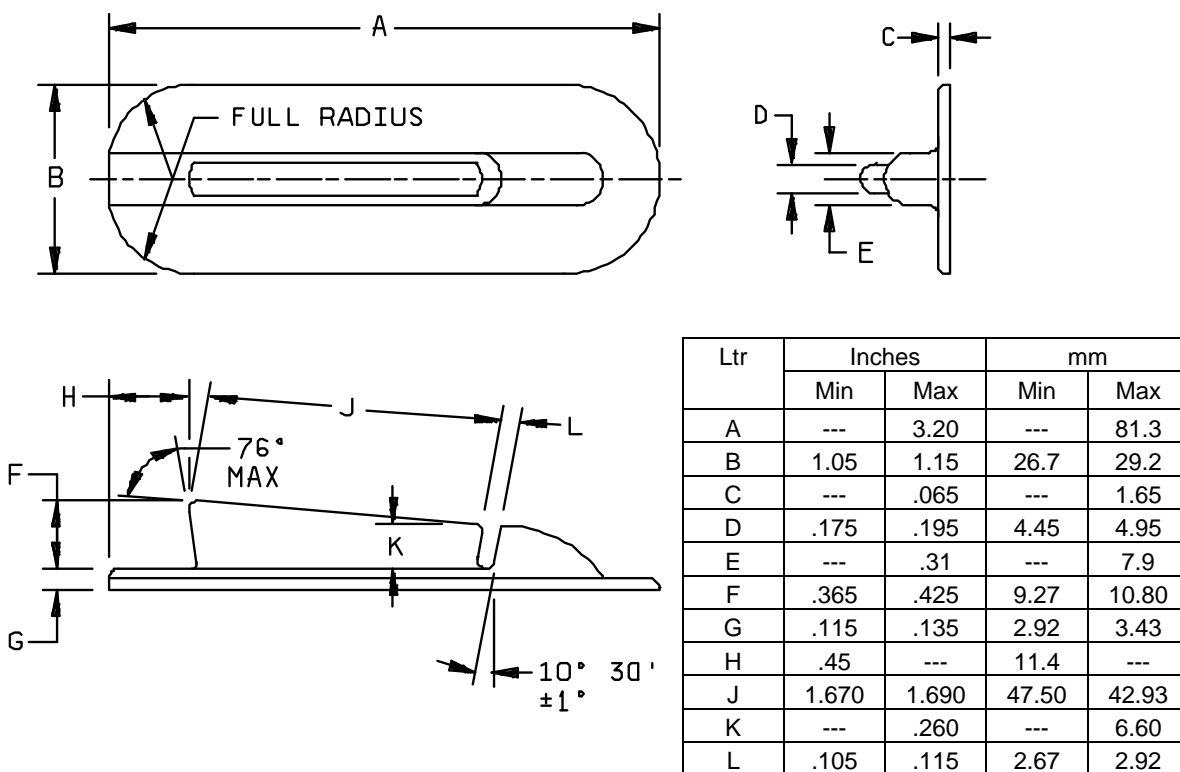
INCH-POUND
MIL-DTL-9129/9A
26 March 2009
SUPERSEDING
MIL-D-9129/9
30 September 1986

DETAIL SPECIFICATION SHEET

HOLDERS, DISCHARGER, ELECTROSTATIC

This specification is approved for use by all Departments and Agencies of the Department of Defense.

The requirements for acquiring the product described herein shall consist of this specification sheet and [MIL-DTL-9129](#).

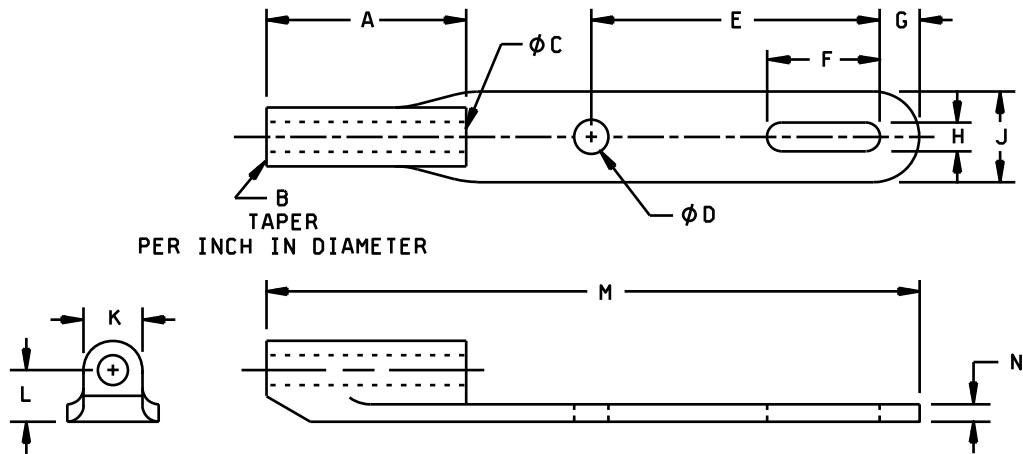


NOTES:

1. Dimensions are in inches.
2. Metric equivalents are given for general information only.
3. Unless otherwise specified, tolerances are $\pm .02$ (0.51 mm) for two place decimals and $\pm .010$ (0.25 mm) for three place decimals.

FIGURE 1. Dimensions and configurations for PIN M9129/09-01.

MIL-DTL-9129/9A



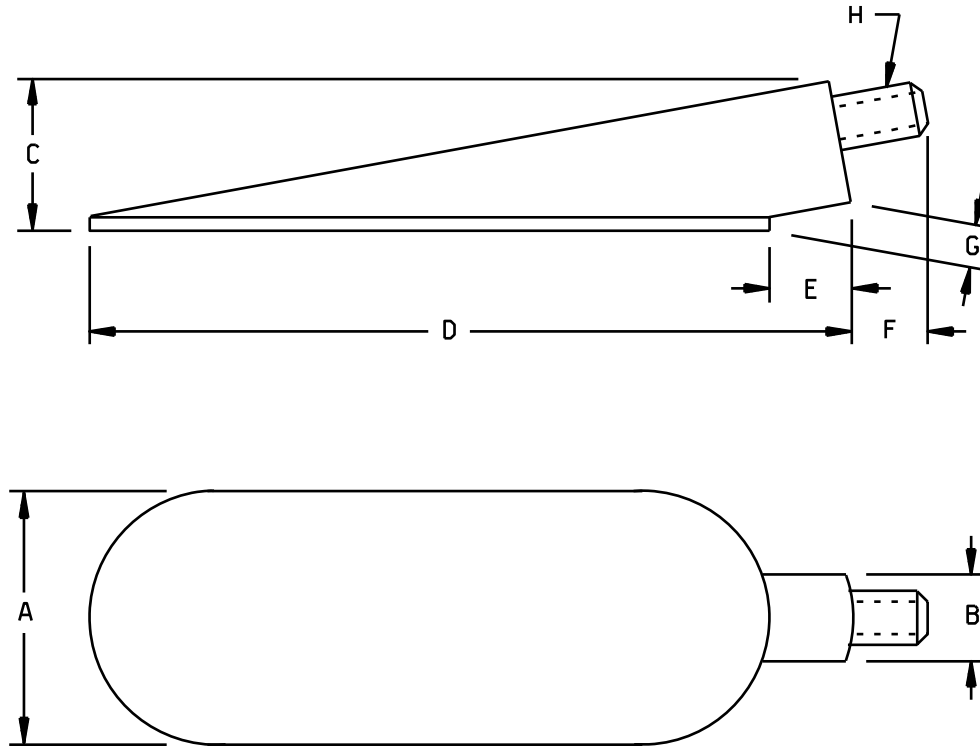
Ltr	Inches		mm	
	Min	Max	Min	Max
A	1.00	1.20	25.4	30.5
B	.0198	.0218	0.50	0.55
C	.163	.166	4.14	4.22
D	.179	.199	4.55	5.05
E	1.57	1.61	39.9	40.9
F	.60	.64	15.2	16.3
G	.20	.24	5.1	6.1
H	.150	.170	3.81	4.32
J	.48	.52	12.2	13.2
K	---	.325	---	8.25
L	.274	.294	6.96	7.47
M	---	3.60	---	91.4
N	.085	.108	2.16	2.74

NOTES:

1. Dimensions are in inches.
2. Metric equivalents are given for general information only.
3. Unless otherwise specified, tolerances are $\pm .02$ (0.51 mm) for two places decimals and $\pm .010$ (0.25 mm) for three place decimals.

FIGURE 2. Dimensions and configuration for PIN M9129/09-02.

MIL-DTL-9129/9A



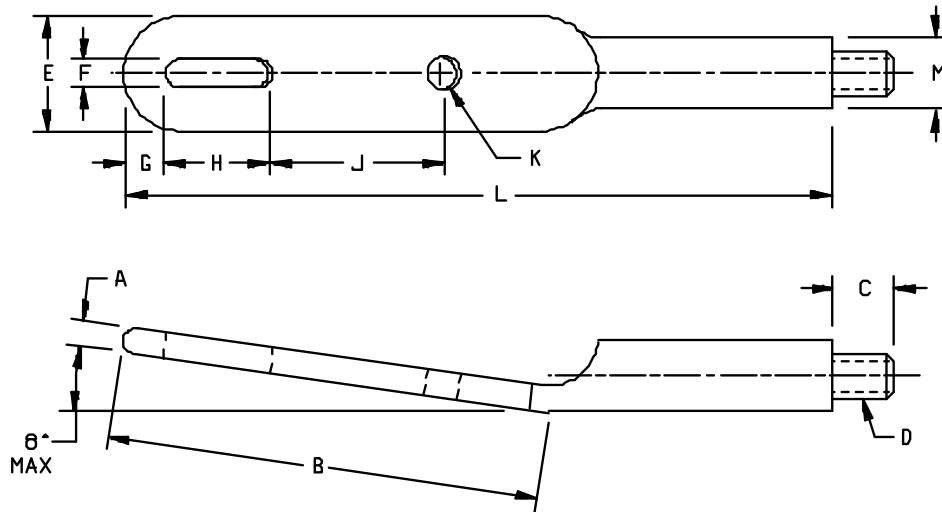
Ltr	Inches		mm	
	Min	Max	Min	Max
A	---	1.17	---	29.7
B	---	.40	---	10.2
C	---	.70	---	17.8
D	---	3.52	---	89.4
E	---	.380	---	9.65
F	.32	.38	8.1	9.6
G	.20	---	5.1	---
H	.23	.27	5.8	6.9

NOTES:

1. Dimensions are in inches.
2. Metric equivalents are given for general information only.
3. Unless otherwise specified, tolerances are $\pm .02$ (0.51 mm) for two places decimals and $\pm .010$ (0.25 mm) for three place decimals.

FIGURE 3. Dimensions and configuration for PIN M9129/09-03.

MIL-DTL-9129/9A



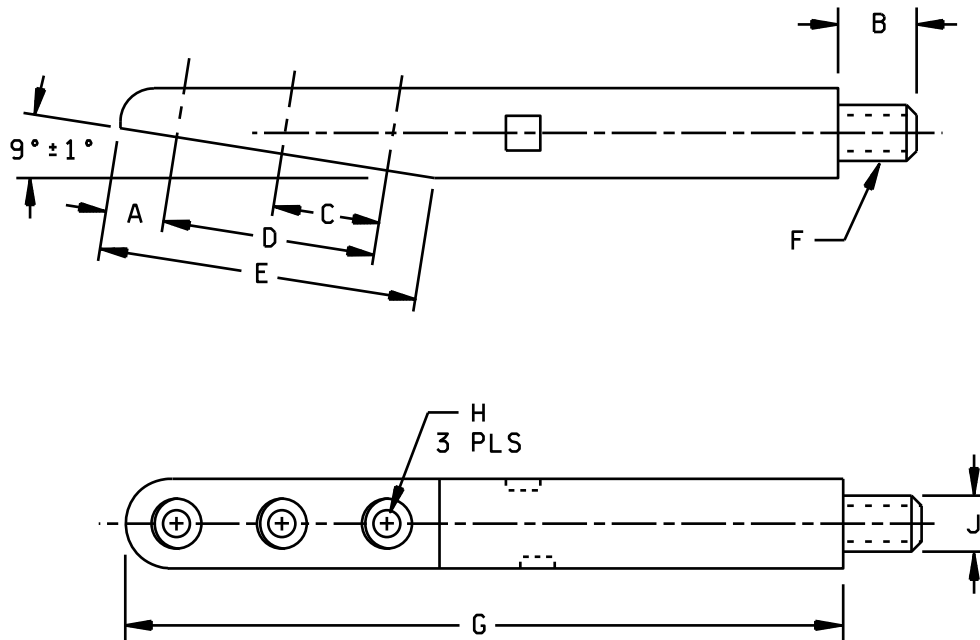
Ltr	Inches		mm	
	Min	Max	Min	Max
A	---	.140	---	3.56
B	---	2.4	---	60.9
C	.32	.38	8.1	9.6
D	.23	.27	5.8	6.9
E	---	.65	---	16.5
F	.150	.170	3.81	4.32
G	.20	.24	5.1	6.1
H	.60	.64	15.2	16.3
J	.95	.99	24.1	25.1
K	.179	.199	4.55	5.05
L	---	4.0	---	102
M	---	.40	---	10.2

NOTES:

1. Dimensions are in inches.
2. Metric equivalents are given for general information only.
3. Unless otherwise specified, tolerances are $\pm .02$ (0.51 mm) for two places decimals and $\pm .010$ (0.25 mm) for three place decimals.

FIGURE 4. Dimensions and configuration for PIN M9129/09-04.

MIL-DTL-9129/9A



Ltr	Inches		mm	
	Min	Max	Min	Max
A	.25	---	6.3	---
B	.32	.38	8.1	9.6
C	.45	.49	11.4	12.4
D	.92	.96	23.4	24.4
E	1.40	---	35.6	---
F	.23	.27	5.8	6.9
G	---	3.20	---	81.3
H 1/	.120	.225	3.05	5.72
J	---	.42	---	10.7

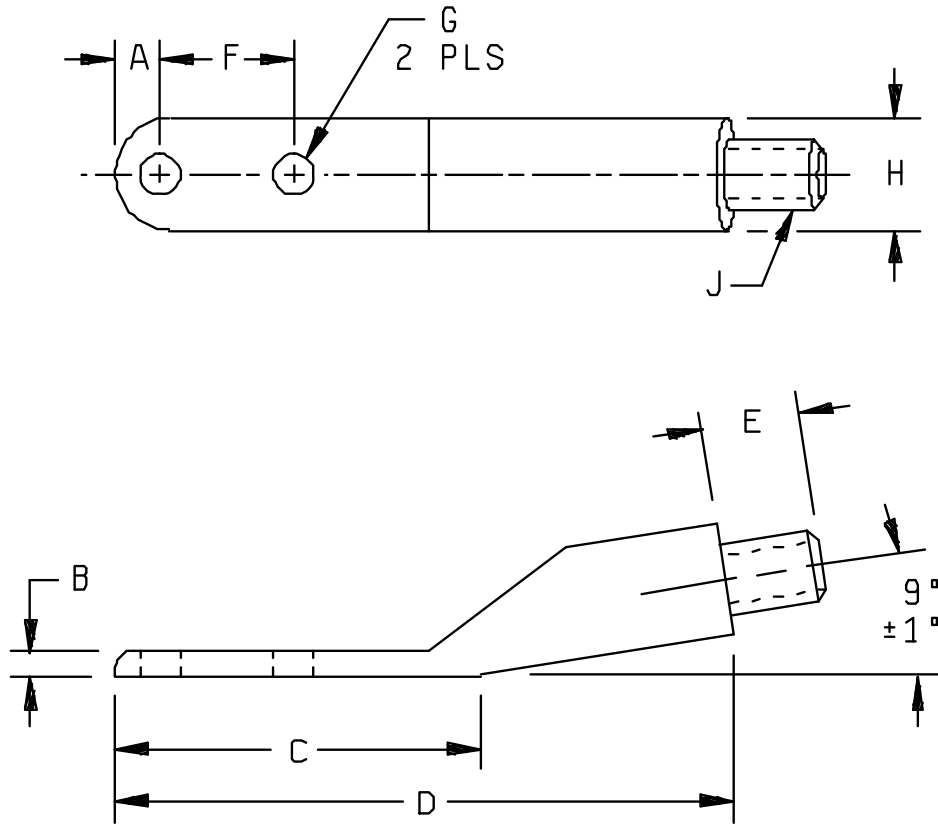
1/ Countersunk

NOTES:

1. Dimensions are in inches.
2. Metric equivalents are given for general information only.
3. Unless otherwise specified, tolerances are $\pm .02$ (0.51 mm) for two places decimals and $\pm .010$ (0.25 mm) for three place decimals.

FIGURE 5. Dimensions and configuration for PIN M9129/09-05.

MIL-DTL-9129/9A



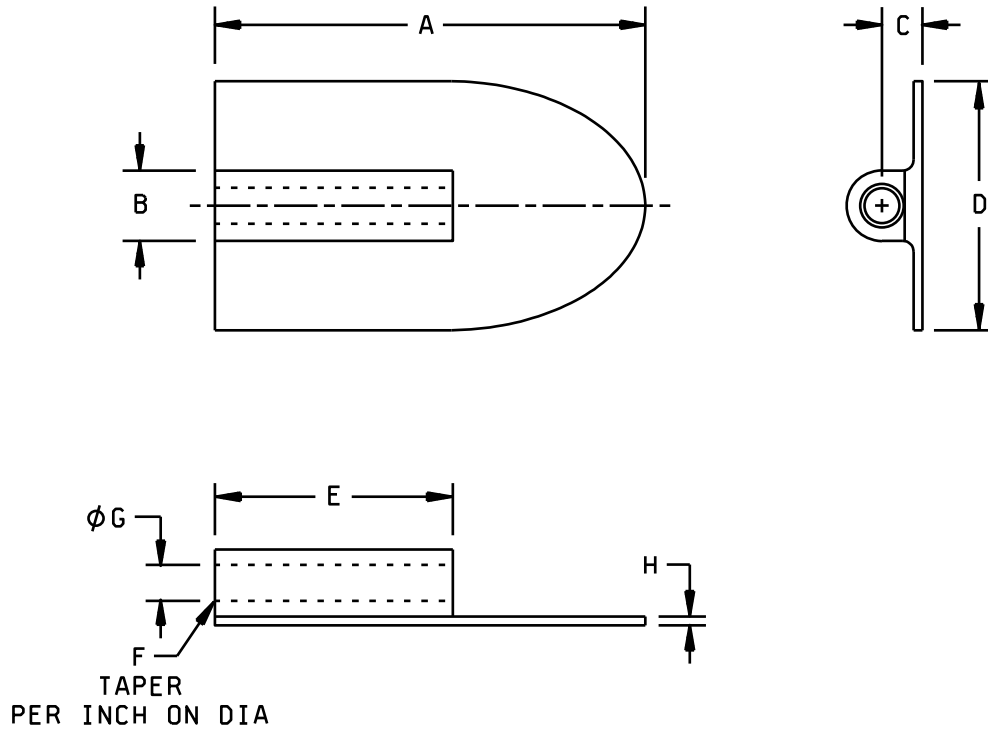
Ltr	Inches		mm	
	Min	Max	Min	Max
A	.160	---	4.06	---
B	.09	---	2.3	---
C	---	1.3	---	33
D	2.2	---	56	---
E	.32	.38	8.1	9.6
F	.465	.485	11.81	12.32
G	.134	.154	3.40	3.91
H	---	.40	---	10.2
J	.23	.27	5.8	6.9

NOTES:

1. Dimensions are in inches.
2. Metric equivalents are given for general information only.
3. Unless otherwise specified, tolerances are $\pm .02$ (0.51 mm) for two places decimals and $\pm .010$ (0.25 mm) for three place decimals.

FIGURE 6. Dimensions and configuration for PIN M9129/09-06.

MIL-DTL-9129/9A



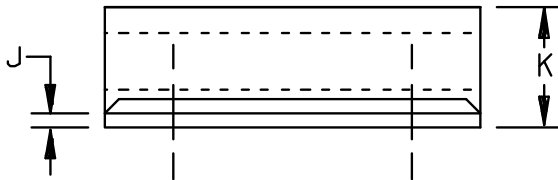
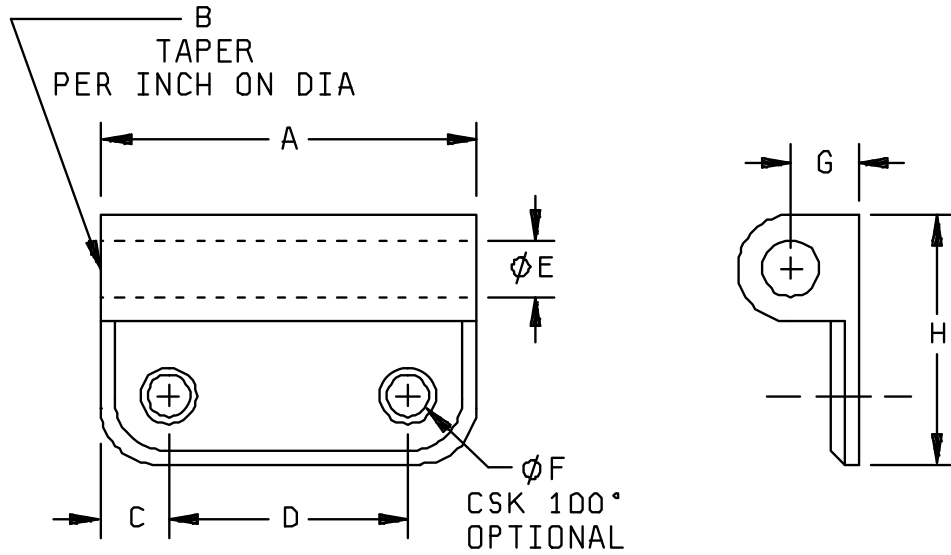
Ltr	Inches		mm	
	Min	Max	Min	Max
A	---	1.99	---	50.5
B	---	3.25	---	82.6
C	.177	.197	4.50	5.00
D	---	1.15	---	29.2
E	1.08	1.12	27.4	28.4
F	.0198	.0218	0.503	0.554
G	.1635	.1660	4.153	4.216
H	.02	.06	0.5	1.5

NOTES:

1. Dimensions are in inches.
2. Metric equivalents are given for general information only.
3. Unless otherwise specified, tolerances are $\pm .02$ (0.51 mm) for two places decimals and $\pm .010$ (0.25 mm) for three place decimals.

FIGURE 7. Dimensions and configuration for PIN M9129/09-07.

MIL-DTL-9129/9A



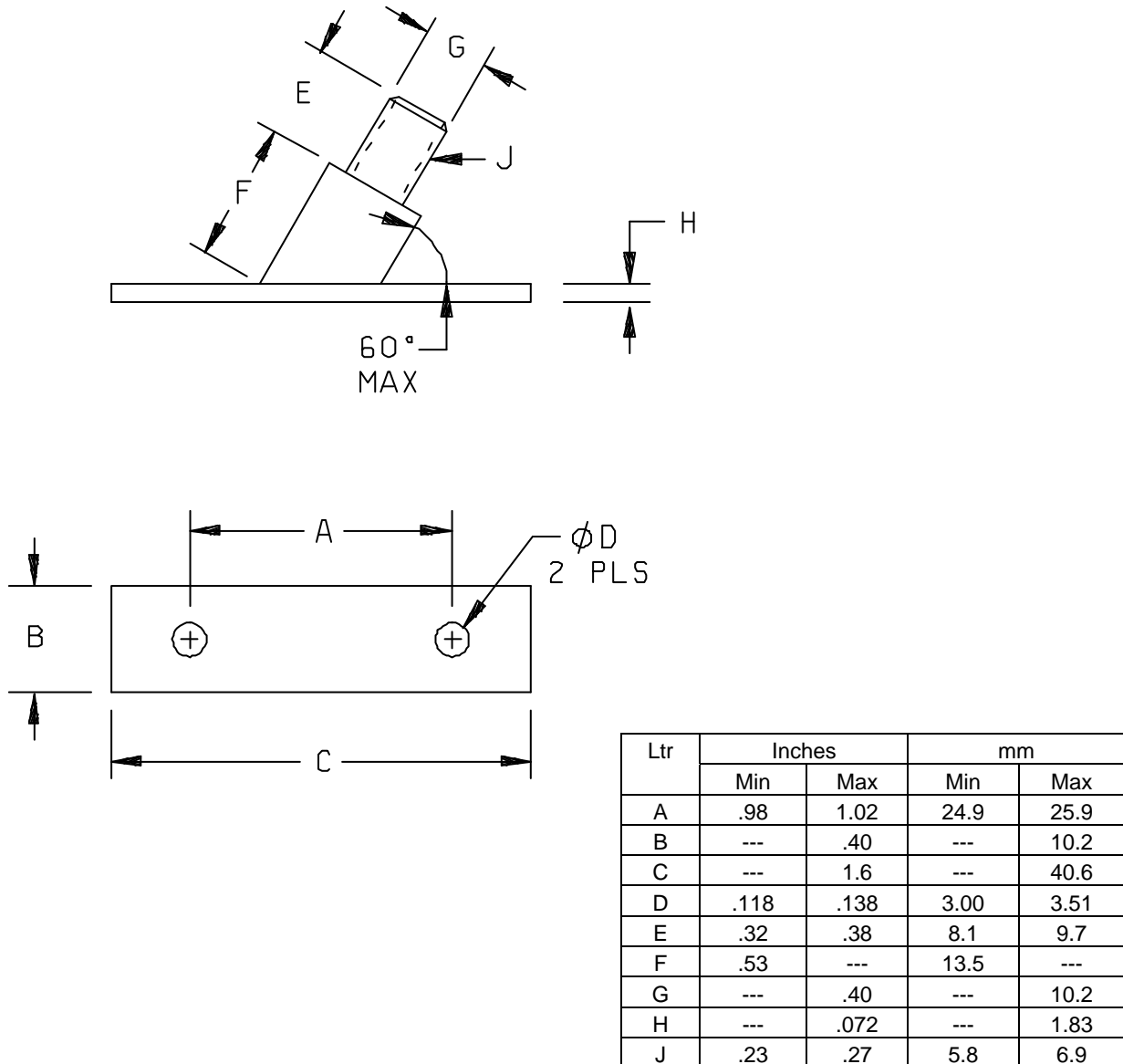
Ltr	Inches		mm	
	Min	Max	Min	Max
A	1.08	1.12	27.4	28.4
B	.0198	.0218	0.503	0.554
C	.18	.22	4.6	5.6
D	.68	.72	17.3	18.3
E	.1635	.1660	4.153	4.216
F	.115	.135	2.92	3.43
G	---	.197	---	5.00
H	---	.73	---	18.5
J	.04	---	1.0	---
K	---	.35	---	8.9

NOTES:

1. Dimensions are in inches.
2. Metric equivalents are given for general information only.
3. Unless otherwise specified, tolerances are $\pm .02$ (0.51 mm) for two places decimals and $\pm .010$ (0.25 mm) for three place decimals.

FIGURE 8. Dimensions and configuration for PIN M9129/09-08.

MIL-DTL-9129/9A

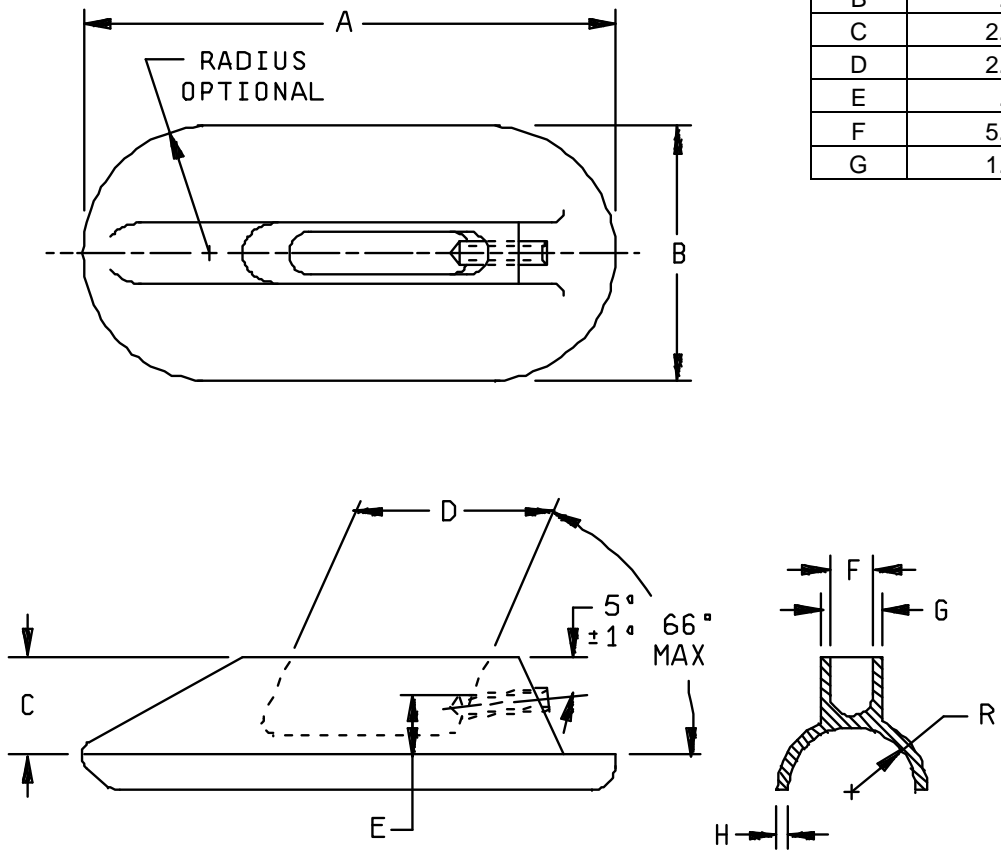


NOTES:

1. Dimensions are in inches.
2. Metric equivalents are given for general information only.
3. Unless otherwise specified, tolerances are $\pm .02$ (0.51 mm) for two places decimals and $\pm .010$ (0.25 mm) for three place decimals.

FIGURE 9. Dimensions and configuration for PIN M9129/09-09.

10



MIL-DTL-9129/9A

FIGURE 10. Dimensions and configuration for PIN M9129/09-10.

MIL-DTL-9129/9A

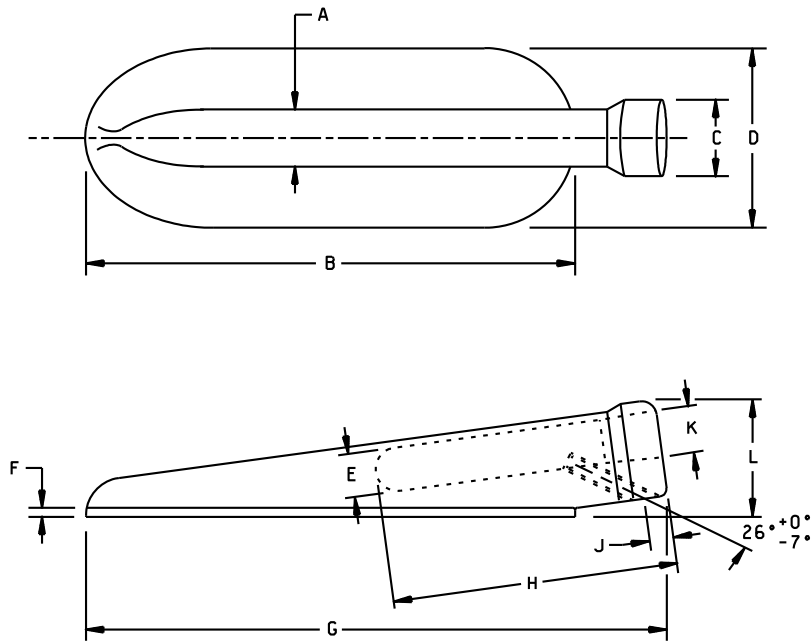
Ltr	Inches		mm	
	Min	Max	Min	Max
A	---	2.3	---	58
B	---	1.1	---	28
C	---	.45	---	11.4
D	.83	.89	21.1	22.6
E	.237	.277	6.02	7.03
F	.188	---	4.77	---
G	.26	---	6.6	---
H	.03	.08	0.8	2.0

NOTES:

1. Dimensions are in inches.
2. Metric equivalents are given for general information only.
3. Unless otherwise specified, tolerances are $\pm .02$ (0.51 mm) for two places decimals and $\pm .010$ (0.25 mm) for three place decimals.

FIGURE 10. Dimensions and configuration for PIN M9129/09-10 - Continued.

MIL-DTL-9129/9A



Ltr	Inches		mm	
	Min	Max	Min	Max
A	.375	---	9.52	---
B	3.18	3.22	80.8	81.8
C	.48	.52	12.2	13.2
D	1.145	1.205	29.08	30.61
E	.280	.295	7.11	7.49
F	.060	---	1.52	---
G	3.78	3.82	96.0	97.0
H	1.87	---	47.5	---
J	.175	---	4.44	---
K	.31	---	7.9	---
L	---	.77	---	19.6

NOTES:

1. Dimensions are in inches.
2. Metric equivalents are given for general information only.
3. Unless otherwise specified, tolerances are $\pm .02$ (0.51 mm) for two places decimals and $\pm .010$ (0.25 mm) for three place decimals.

FIGURE 11. Dimensions and configuration for PIN M9129/09-11.

MIL-DTL-9129/9A

Part or Identifying Number (PIN): M9129/09- (dash number from table I and reference to associated figure herein).

TABLE I. PINs.

M9129/09-	Figure <u>2/</u>
01	1
02	2
03	3
04	4
05	5
06	6
07	7
08	8
09	9
10 <u>1/</u>	10
11	11

1/ Dash 10 will include a suffix to represent the radius shown on figure 10. Each radius is identified by a style letter. Example of the part number: M9129/09-10B.

2/ For applications requiring lightning survivability, only holders 1, 3, 7, 10, and 11 shall be used with the appropriate P-type dischargers.

VERIFICATION:

First Article: First article testing for holders shall include two samples, each being sequentially tested to vibration, lightning transfer, and salt spray with a mating discharger.

Changes from previous issue. Marginal notations are not used in this revision to identify changes with respect to the previous issue due to the extent of the changes.

MIL-DTL-9129/9A

Custodians:

Army - CR
Navy - AS
Air Force - 85
DLA - CC

Preparing activity:

DLA - CC

(Project 5920-2009-003)

Review activities:

Army - CE, MI
Navy - MC
Air Force - 19, 99

NOTE: The activities listed above were interested in this document as of the date of this document. Since organizations and responsibilities can change, you should verify the currency of the information above using the ASSIST Online database at <http://assist.daps.dla.mil>.