

INCH-POUND

MIL-DTL-8783/1
 6 JULY 1998
 SUPERSEDING
 MS21920C
 8 December 1975

DETAIL SPECIFICATION SHEET

CLAMP, HOSE, FLAT BAND 500 °F

This specification is approved for use by all Departments and Agencies of the Department of Defense.

The requirements for acquiring the product described herein shall consist of this specification sheet and MIL-DTL-8783.

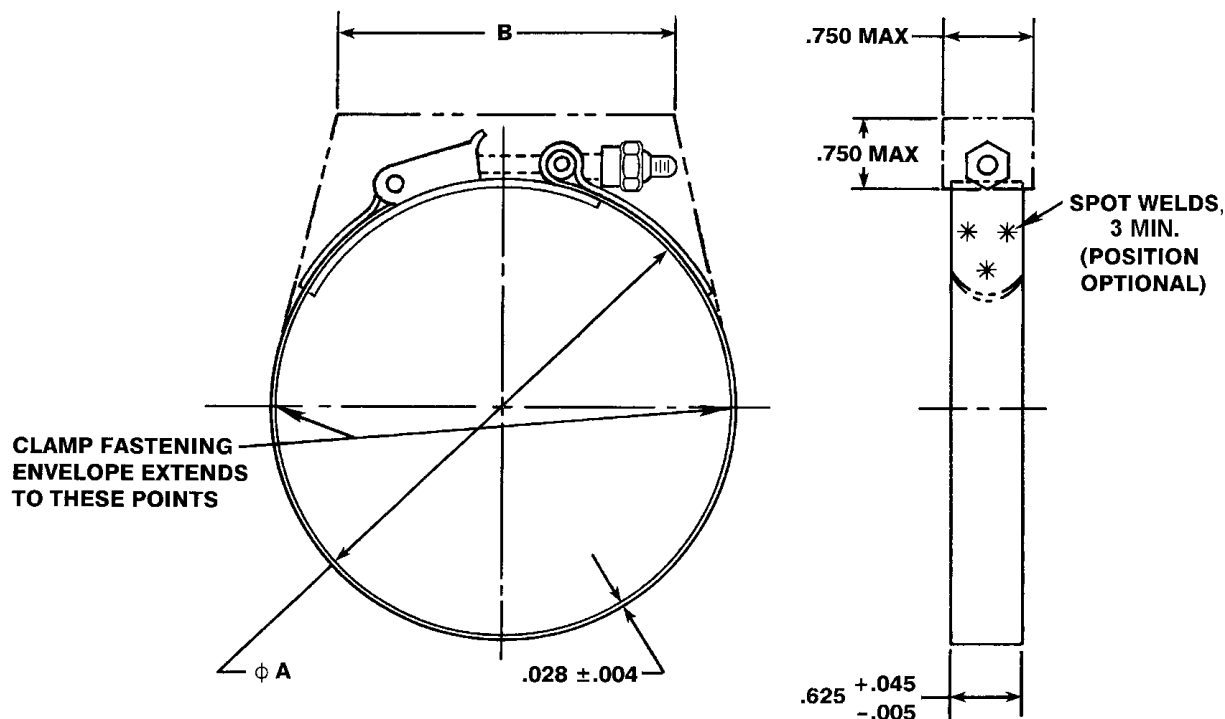


FIGURE 1. Hose clamp.

MIL-DTL-8783/1

TABLE I. Dimensions, active part numbers.

Part No.	Part No.	A Inside Diametral Range		B Maximum		ADJMT RANGE REF	WT LBS MAX QUICK RELEASE	WT LBS MAX T-BOLT
		EXT'D MIN	CPRS'D MAX	T-BOLT TYPE	QUICK RELEASE TYPE			
MS21920-20	MS21920-20R	2.50	2.25	3.0	3.4	.25	.139	.095
MS21920-22	MS21920-22R	2.75	2.50				.143	.099
MS21920-24	MS21920-24R	3.00	2.75				.146	.102
MS21920-26	MS21920-26R	3.25	3.00				.150	.106
MS21920-28	MS21920-28R	3.50	3.25				.153	.109
MS21920-30	MS21920-30R	3.75	3.50				.157	.113
MS21920-33	MS21920-33R	4.12	3.75				.164	.120
MS21920-35	MS21920-35R	4.38	4.00				.167	.123
MS21920-37	MS21920-37R	4.62	4.25				.171	.127
MS21920-39	MS21920-39R	4.88	4.50				.174	.130
MS21920-41	MS21920-41R	5.12	4.75			.178	.134	
MS21920-43	MS21920-43R	5.38	5.00			.181	.137	
MS21920-45	MS21920-45R	5.62	5.25			.185	.141	
MS21920-47	MS21920-47R	5.88	5.50			.188	.144	
MS21920-49	MS21920-49R	6.12	5.75			.192	.148	
MS21920-51	MS21920-51R	6.38	6.00			.195	.151	
MS21920-53	MS21920-53R	6.62	6.25			.199	.155	
MS21920-55	MS21920-55R	6.88	6.50			.202	.158	
MS21920-57	MS21920-57R	7.12	6.75			.205	.161	
MS21920-59	MS21920-59R	7.38	7.00			.209	.165	
MS21920-61	MS21920-61R	7.62	7.25	.212	.168			
MS21920-66	MS21920-66R	8.25	7.62	3.8	4.2	.62	.227	.188
MS21920-70	MS21920-70R	8.75	8.12				.234	.190
MS21920-74	MS21920-74R	9.25	8.62				.241	.197
MS21920-78	MS21920-78R	9.75	9.12				.248	.204
MS21920-80	MS21920-80R	10.00	9.38				.251	.207

MIL-DTL-8783/1

TABLE II. Dimensions, inactive part numbers.

T-BOLT LATCH	QUICK- RELEASE LATCH	A Inside Diametral Range		B MAX		ADJUSTMENT RANGE REF	WEIGHT POUNDS MAX
		EXTENDED MIN	COMPRESSED MAX	T-BOLT TYPE	QUICK- RELEASE TYPE		
MS21920-21	MS21920-21R	2.62	2.38	3.0	3.4	.25	.143
MS21920-23	MS21920-23R	2.88	2.62				.146
MS21920-25	MS21920-25R	3.12	2.88				.150
MS21920-27	MS21920-27R	3.38	3.12				.153
MS21920-29	MS21920-29R	3.62	3.38				.157
MS21920-32	MS21920-32R	4.00	3.62			.38	.164
MS21920-34	MS21920-34R	4.25	3.88				.167
MS21920-36	MS21920-36R	4.50	4.12				.171
MS21920-38	MS21920-38R	4.75	4.38				.174
MS21920-40	MS21920-40R	5.00	4.62				.178
MS21920-42	MS21920-42R	5.25	4.88				.181
MS21920-44	MS21920-44R	5.50	5.12				.185
MS21920-46	MS21920-46R	5.75	5.38				.188
MS21920-48	MS21920-48R	6.00	5.62				.192
MS21920-50	MS21920-50R	6.25	5.88				.195
MS21920-52	MS21920-52R	6.50	6.12				.199
MS21920-54	MS21920-54R	6.75	6.38				.202
MS21920-56	MS21920-56R	7.00	6.62				.205
MS21920-58	MS21920-58R	7.25	6.88				.209
MS21920-60	MS21920-60R	7.50	7.12				.212
MS21920-64	MS21920-64R	8.00	7.38	.62	.227		
MS21920-68	MS21920-68R	8.50	7.88		.234		
MS21920-72	MS21920-72R	9.00	8.38		.241		
MS21920-76	MS21920-76R	9.50	8.88		.248		

Requirements:

1. The hose clamp shall be in accordance with figure 1 and tables I and II.
2. Material: See acquisition specification.
3. Finish: See acquisition specification.
4. Dimension B applies when the clamp is in the tightened condition at the maximum and minimum positions of its diametral range.
5. The T-bolt head/shank fillet radius shall be 0.030 inch minimum.
6. Remove all burrs and sharp edges.

MIL-DTL-8783/1

Notes:

1. Dimensions in inches.
2. The illustration is for identification purposes only and is not intended to restrict designs and shapes of fastening devices, which conform to the requirements and are within the envelope dimensions.

CONCLUDING MATERIAL

Custodians:

Air Force - 99
Army - AT

Preparing activity:

DLA - CC

(Project 4730-0860-01)

Review activities:

Air Force - 82
Army - AV, MI