

INCH-POUND

MIL-DTL-5372/1B
 13 May 2009
 SUPERSEDING
 MIL-DTL-5372/1A
 13 February 2004

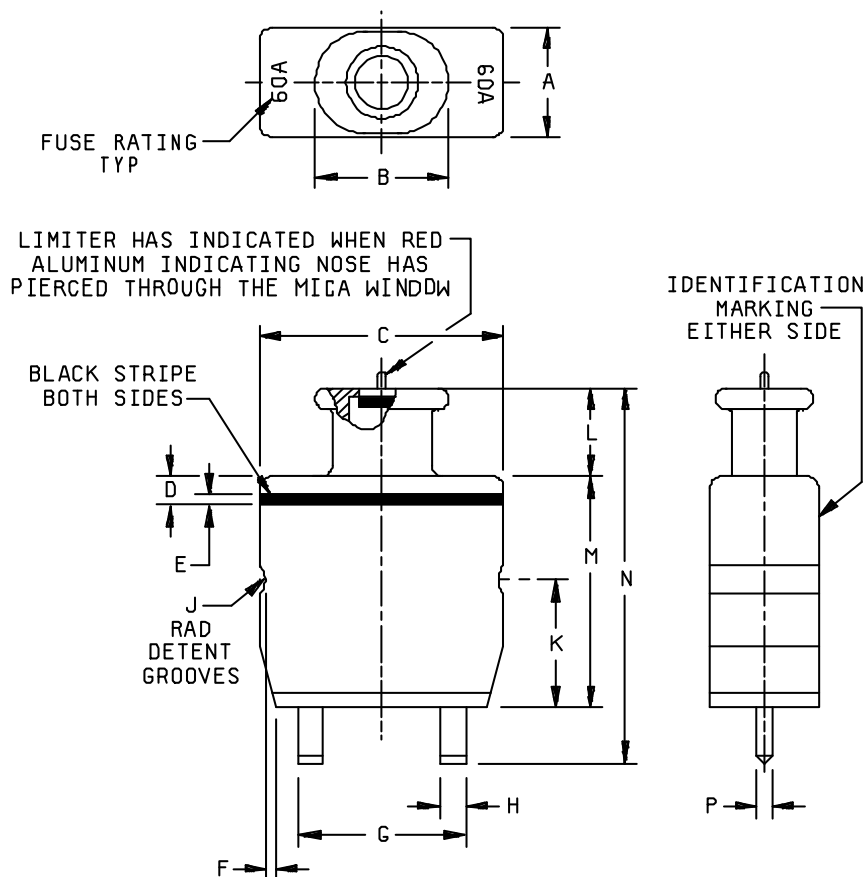
DETAIL SPECIFICATION SHEET

FUSE, LIMITER TYPE
 ENCLOSED LINK, 1 – 60 AMPERE

INACTIVE FOR NEW DESIGN AFTER 17 September 2003.
 NO LONGER USED EXCEPT FOR REPLACEMENT PURPOSES.

This specification is approved for use by all Departments and Agencies of the Department of Defense.

The requirements for acquiring the product described herein shall consist of this specification sheet and [MIL-F-5372](#).



MIL-DTL-5372/1B

Ltr	Inches		mm	
	Min	Max	Min	Max
A	.56	.66	14.2	16.8
B	.70	.80	17.8	20.3
C	1.32	1.42	33.5	36.1
D	.11	.21	2.79	5.3
E	.01	.11	0.3	2.8
F	.03 Nominal		0.8 Nominal	
G	.89	.99	22.6	25.1
H	.09	.19	2.3	4.8
J	.120	.130	3.05	3.3
K	.71	.73	18.0	18.5
L	.45	.55	11.4	14.0
M	1.25	1.35	31.8	34.3
N	2.06	2.16	52.3	54.9
P	.04	.14	1.0	3.6

NOTES:

1. Dimensions are in inches.
2. Metric equivalents are given for general information only.

FIGURE 1. Outline drawing of fuse - Continued.

MIL-DTL-5372/1B

REQUIREMENTS:

TABLE I. Ampere rating.

Dash number M5372/1-	Current rating amperes
01	1
02	2
03	3
05	5
10	10
15	15
20	20
25	25
30	30
35	35
40	40
50	50
60	60

Dimensions, marking, and configuration: See figure 1.

Voltage rating. 115/200 volts ac, 400 Hz, 28 volts dc.

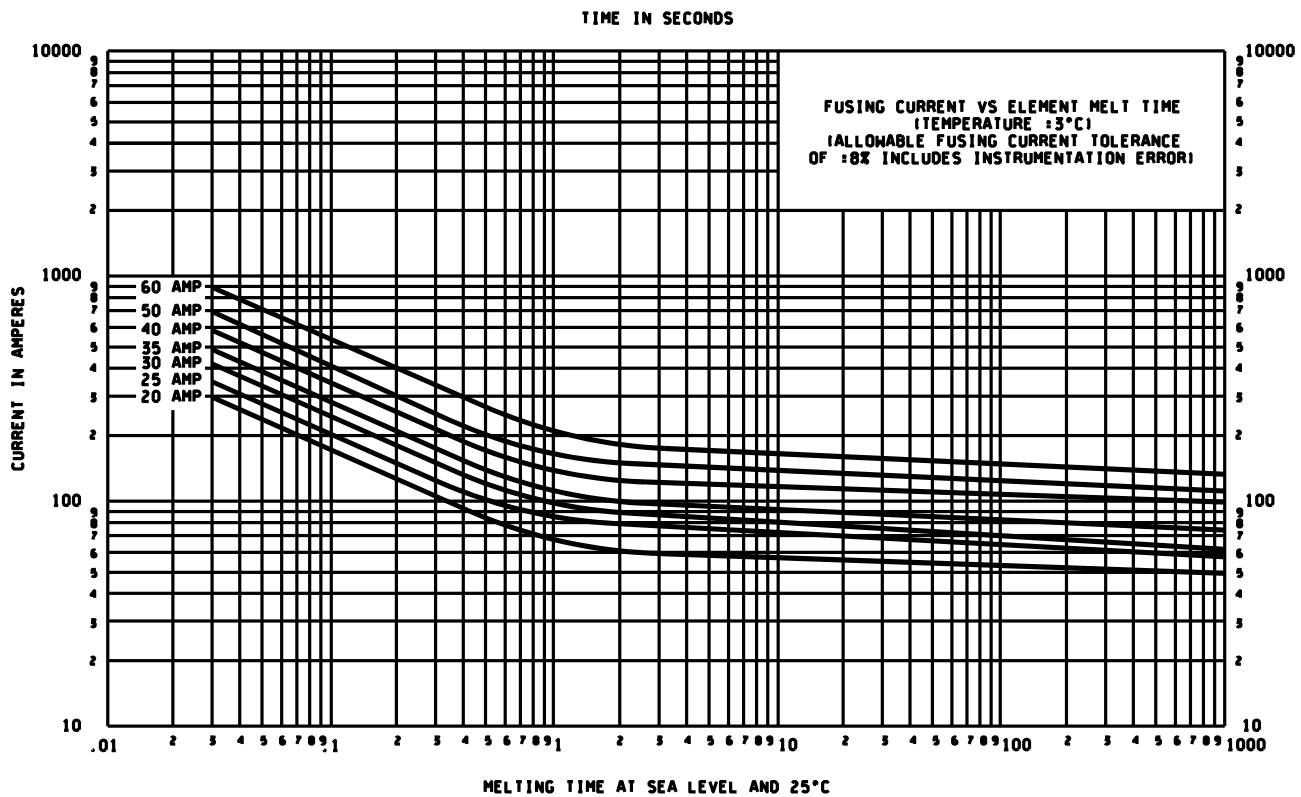
Weight. 0.065 pounds maximum.

Materials. Body: Glass filled melamine in accordance with [ASTM-D5948](#) type MMI-5 (white). Blades: Copper in accordance with [ASTM-B152/B152M](#), type ETA with silver plate.

Terminal strength. With body of the fuse firmly clamped, the forces below shall be applied to both terminals.

TABLE II. Terminal strength.

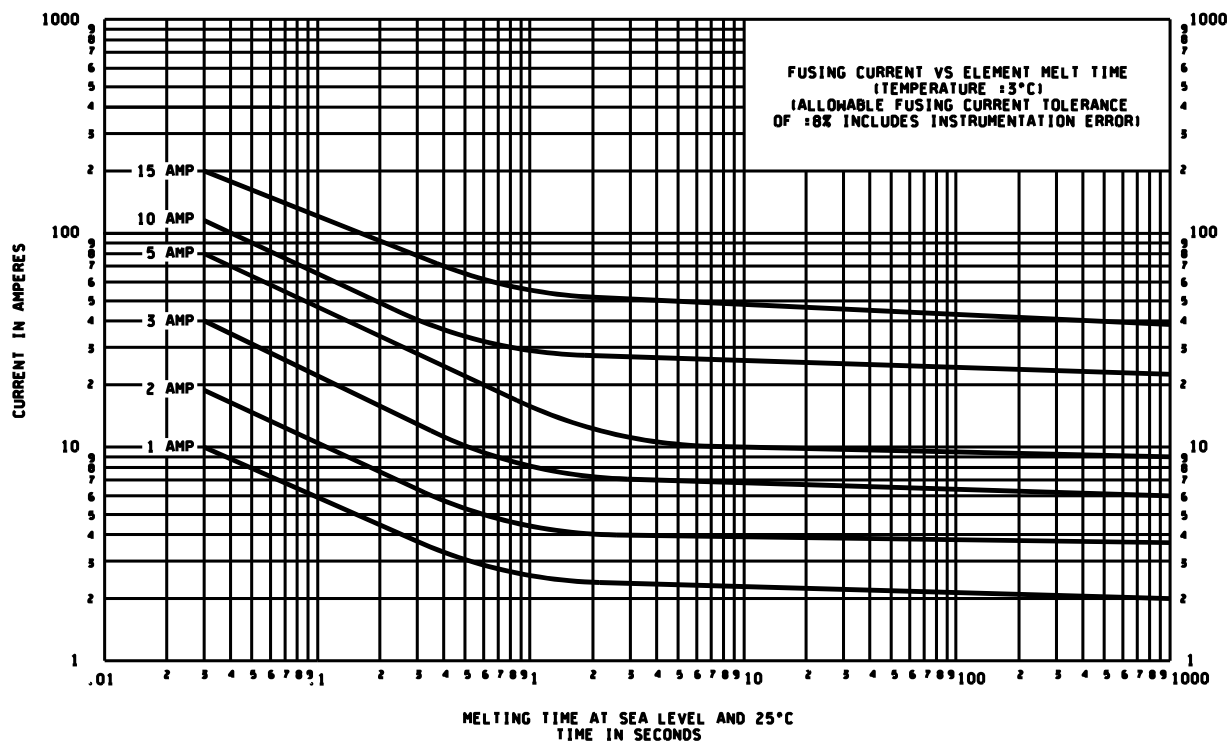
Direction of force	Rating	
	To 30 amperes	Above 30 amperes
	Force in pounds (minimum)	
To edge of blade	10	25
To flat side of blade	5	10
To end of blade (into fuse)	30	40



4

MIL-DTL-5372/1B

FIGURE 2. Fusing current vs element melt time.
(1 to 15 ampere)



5

MIL-DTL-5372/1B

FIGURE 3. Fusing current vs element melt time.
(20 to 60 ampere)

MIL-DTL-5372/1B

TABLE III. Cross-reference.

Superseding number	Superseded numbers for CAGE		
	09922	27012	81755
M5372/1-01	F1L01T5	27010	4-021-1
M5372/1-02	F1L02T5	27020	4-021-2
M5372/1-03	F1L03T5	27030	4-021-3
M5372/1-05	F1L05T5	27050	4-021-5
M5372/1-10	F1L10T5	27100	4-021-10
M5372/1-15	F1L15T5	27150	4-021-15
M5372/1-20	F1L20T5	27200	4-021-20
M5372/1-25	F1L25T5	27250	4-021-25
M5372/1-30	F1L30T5	27300	4-021-30
M5372/1-35	F1L35T5	27350	4-021-35
M5372/1-40	F1L40T5	27400	4-021-40
M5372/1-50	F1L50T5	27500	4-021-50
M5372/1-60	F1L60T5	27600	4-021-60

Referenced documents. In addition to [MIL-F-5372](#), this document references the following:

[ASTM-D5948](#)

[ASTM-B152/B152M](#)

The margins of this specification are marked with vertical lines to indicate where changes from the previous issue were made. This was done as a convenience only and the Government assumes no liability whatsoever for any inaccuracies in these notations. Bidders and contractors are cautioned to evaluate the requirements of this document based on the entire content irrespective of the marginal notations and relationship to the last previous issue.

Custodians:
Air Force - 85
DLA - CC

Preparing activity:
DLA - CC

(Project 5920-2009-047)

NOTE: The activities listed above were interested in this document as of the date of this document. Since organizations and responsibilities can change, you should verify the currency of the information above using the ASSIST Online database at <http://assist.daps.dla.mil>.