

INCH-POUND

MIL-DTL-43649D(GL)
25 April 2005
SUPERSEDING
MIL-DTL-43649C(GL)
25 June 1997

DETAIL SPECIFICATION

PARACHUTES, CARGO, 12, 26, AND 34 FOOT DIAMETER

This specification is approved for use by the Natick Soldier Center, Department of the Army, and is available for use by all Departments and Agencies of the Department of Defense.

1. SCOPE

1.1 Scope. This specification covers the requirements for three cargo parachute assemblies and the separate components thereof.

1.2 Classification.

1.2.1 Size. The cargo parachutes consist of the following sizes as specified (see 6.2).

Size	- 12-foot diameter
Size	- 26-foot diameter
Size	- 34-foot diameter

2. APPLICABLE DOCUMENTS

2.1 General. The documents listed in this section are cited in sections 3, 4 and 5 of this specification. This section does not include documents cited in other sections of this specification or recommended for additional information or as examples. While every effort has been made to ensure the completeness of this list, document users are cautioned that they must meet all specified requirements documents cited in sections 3, 4, and 5 of this specification, whether or not they are listed.

Comments, suggestions, or questions on this document should be addressed to Natick Soldier Center, ATTN: AMSRD-NSC-AD-AD, J. Riley, Natick, MA 01760-5017 or emailed to john.riley@natick.army.mil Since contact information can change, you may want to verify the currency of this address information using the ASSIST Online database at http://assist.daps.dla.mil
--

AMSC N/A

FSC 1670

DISTRIBUTION STATEMENT A. Approved for public release; distribution is unlimited.

MIL-DTL-43649D(GL)

2.2 Government documents.

2.2.1 Specifications and standards. The following specifications and standards form a part of this document to the extent herein. Unless otherwise specified, the issues of these documents are those cited in the solicitation or contract

FEDERAL SPECIFICATIONS

V-T-295 - Thread, Nylon

(Copies of these documents are available online at <http://assist.daps.dla.mil/quicksearch/> or www.dodssp.daps.mil or from the standardization order desk, 700 Robbins Avenue, Building 4D, Philadelphia, PA 19111-5094)

2.2.2 Drawings. The following other Government drawings form a part of this document to the extent specified herein. Unless otherwise specified, the issues are those cited in the solicitation or contract.

DRAWINGS

NATICK SOLDIER CENTER

11-1-216	- Parachute, Cargo, Ringslot, 12 Ft. Diameter
11-1-217	- Canopy Assembly; 12 Ft. Dia. Ringslot Cargo Parachute
11-1-218	- Deployment Bag; 12 Ft. Diameter Cargo Parachute
11-1-219	- Static Line; Cargo Parachute
11-1-507	- Canopy Details
11-1-508	- Riser; Cargo Parachute
11-1-509	- Panels, Canopy
11-1-555	- Parachute, Cargo, Ringslot, 26 Ft. Diameter
11-1-556	- Canopy Assembly; 26 Ft. Diameter Ringslot Cargo Parachute
11-1-557	- Canopy Details
11-1-558	- Canopy Sections
11-1-559	- Riser; Cargo Parachute
11-1-560	- Panels, Canopy
11-1-578	- Parachute, Cargo, 34 Ft. Nominal Diameter, Cotton, Bi-Conical, Annular Ring, 500 Lb Capacity
11-1-579	- Canopy Assembly; 34 Ft. Diameter Bi-Conical, G-14 Cargo Parachute
11-1-580	- Canopy Details and Sections
11-1-581	- Riser, 34 Ft. Diameter Bi-conical Cargo Parachute
11-1-3954	- Deployment Bag Assembly; 26 Ft. HV Parachute
11-1-3955	- Body Assembly
11-1-3956	- Flap, Assembly
11-1-3960	- Loop Assembly
51D6553	- Pack, Cargo Parachute

MIL-DTL-43649D(GL)

61D2459 - Droque, Parachute Static Line

(Copies of these documents are available from the Natick Soldier Center, ATTN: AMSRD-NSC-AD-AD CONFIGURATION MANAGER, Natick, MA 01760-5017.)

2.3 Non-Government publications. The following documents form a part of this document to the extent specified herein. Unless otherwise specified, the issues of these documents are those cited in the solicitation.

AMERICAN SOCIETY FOR TESTING AND MATERIALS (ASTM)

ASTM D 737 - Test Method for Air Permeability of Textile Fabrics
ASTM D 6193 - Standard Practice for Stitches and Seams

(Copies of these documents are available from the American Society for Testing and Materials, 100 Barr Harbor Drive, West Conshohocken, PA 19428-2959.)

2.4 Order of precedence. In the event of a conflict between the text of this document and the references cited herein (except for related associated specifications or specification sheets), the text of this document takes precedence. Nothing in this document, however, supersedes applicable laws and regulations unless a specific exemption has been obtained.

3. REQUIREMENTS

3.1 First article. When specified (see 6.2), a sample shall be subjected to a first article inspection in accordance with 4.2.

3.2 Materials. Materials shall conform to the requirements of the applicable Technical Data Package (TDP), to subsidiary specifications and standards applicable thereto and as specified herein.

3.2.1 Recycled, recovered, or environmentally preferable materials. Recycled, recovered, or environmentally preferable materials should be used to the maximum extent possible provided that the material meets or exceeds the operational requirements, and promotes economically advantageous life cycle costs.

3.3 Construction. Details of construction shall be in accordance with the TDP and the additional requirements as specified herein.

3.3.1 Stitching. All stitching shall be in accordance with ASTM D 6193. Broken threads, skipped and missing stitches occurring in type 301 or 401 stitching shall be overstitched not less than 1 inch past the ends of the defect. Broken threads and skipped stitches occurring in type 308 stitching shall be overstitched not less than three stitches past the ends of the defect. Except where otherwise specified, ends of all type 301 or 401 stitching shall be backstitched not less than ½ inch, unless ends are turned under in a hem or held down by other stitching. Thread tensions shall be maintained so that loose stitching does not occur and the lock will be imbedded

MIL-DTL-43649D(GL)

in the materials sewed. Thread ends shall be trimmed throughout. Runoffs shall be restitched to conform to the specified stitch pattern.

3.3.1.1 Stitching, automatic machinery. Automatic sewing machines may be used for sewing stitch patterns provided that the size of the pattern, the thread size, and the number of stitches per inch specified in the detail specification are maintained. A minimum of three tie-in, overlapping or back stitches shall be used to secure the ends.

3.3.1.2 Darns. Holes, cuts, or tears in the canopy, deployment bag or pack cloths shall be darned with thread, types I, II or III, class A, size A, color Camouflage Green 483 of V-T-295. Damaged areas of the cloth which can be darned shall not exceed $\frac{1}{4}$ inch in diameter for holes (except drill holes) and $\frac{1}{2}$ inch in length for cuts or tears in any direction. Fourteen darns are allowed per canopy, four per deployment bag, and four per pack.

3.3.2 Canopy Permeability. The air permeability of the cloth of the completed canopy shall not exceed the specified lower limit by more than 10 percent nor the specified upper limit by more than 10 percent when tested in accordance with 4.6.1.

3.3.3 Canopy patching. One sewn patch is allowed per canopy. The maximum damaged area that can be patched is an area 7 inches by 7 inches. The patch shall be located no closer than 1 inch from a radial seam, edge reinforcement, or lower lateral band. The patch shall be square or rectangular in shape and conform to the patching procedure in 3.3.4.

3.3.4 Patching procedure.

- a. Place the repairable item on a repair table, smooth the fabric around the damaged area, and secure the item to the table with pushpins. Do not pin the damaged area.
- b. Using an authorized marking aid of contrasting color, mark a square or rectangle around the area to be patched and insure that one side of the marked square or rectangle is parallel to the warp or filling of the fabric.
- c. Cut the damaged area fabric along the lines made in (b) above. Further cut the fabric diagonally at each corner to allow a $\frac{1}{2}$ inch foldback in the raw edges.
- d. Make a $\frac{1}{2}$ inch foldback on each raw edge. Pin and baste each foldback to complete the prepared hole.
- e. Using the same type material as in the original construction, mark and cut a patch 2-1/2 inches wider and longer than the inside measurements of the prepared hole. Insure that the patch material is marked and cut along the warp or filling of the fabric.
- f. Center the patch material over the prepared hole and insure the warp or filling of the patch material matches the warp or filling of the fabric being patched. Pin the patched material in position.

MIL-DTL-43649D(GL)

g. Make a ½ inch fold under on each edge of the patch material and baste the patch to the prepared area.

h. Remove the pushpins securing the item to the repair table and secure the patch by machine stitching, using the applicable details in figure 1. The stitching should be accomplished with thread that is contrasting in color to the fabric. Thread shall be V-T-295, size E nylon, types I, II or III, class A. The stitching shall be type 301, using 7 to 11 stitches per inch in accordance with ASTM D 6193. Backstitch ends of stitching ½ inch minimum or overlap the ends of stitching 2 inches minimum or 4 inches maximum.

3.4 Workmanship. The workmanship shall conform to the quality of product established by this specification.

4. VERIFICATION

4.1 Classification of Inspections. The inspection requirements specified herein are classified as follows:

- a. First article inspection (see 4.2).
- b. Conformance inspection (see 4.3).

4.2 First article inspection. First article inspection shall be performed on one complete parachute assembly, when a first article sample is specified (see 3.1). This inspection shall include the tests and examinations of 4.3.1, 4.3.2, 4.4, 4.5 and 4.6. Any defect or nonconformance shall be cause for rejection of the first article.

4.3 Conformance inspection. Conformance inspections shall include the examinations of 4.3.1, 4.3.2, 4.4., 4.5 and 4.6. Sampling plans and acceptance/rejection criteria for 4.4, 4.5 and 4.6 shall be as specified in the contract or purchase order. Parachute assemblies which fail the acceptance criteria shall be cause for rejection of the lot.

4.3.1 Component and material inspection. Components and materials shall be inspected in accordance with all of the requirements of referenced documents unless otherwise excluded, amended, modified, or qualified in this specification or applicable purchase document.

4.3.2 In-process inspection. Inspection of subassemblies shall be made to ascertain that construction details and dimensional requirements, which cannot be examined in the finished product, are in accordance with specified requirements. The Government reserves the right to exclude from consideration of acceptance any material or service for which in-process inspection has indicated nonconformance.

4.4 End item visual examination. The end items shall be examined for the defects listed in the applicable tables of 1 thru V. Any nonconformance to the TDP shall be classified as a defect.

MIL-DTL-43649D(GL)

TABLE I. Canopy Visual Defects

Defect	Classification	
	Major	Minor
Cloth, webbing and tape:		
Any hole in cloth (except drill holes):		
$\frac{1}{4}$ inch diameter or less		201
More than $\frac{1}{4}$ inch diameter	101	
Color not as specified		202
Not specified type or class	102	
Cut or tear in cloth:		
$\frac{1}{2}$ inch or less		203
More than $\frac{1}{2}$ inch	103	
Smash	104	
Multiple floats	105	
Grease or oil stain over $\frac{3}{4}$ sq. inch	106	
Grease or oil stain(s) less than $\frac{1}{2}$ sq. inch area:		
Not more than 5 per gore or 15 per canopy		204
More than 5 per gore or 15 per canopy	107	
Embedded crease or wrinkle in excess of $\frac{1}{2}$ inch width	108	
Darns, over 14 per canopy	109	
Patches:		
More than one per canopy	110	
Patch size exceeding 7 inches by 7 inches	111	
Location not as specified	112	
Shape not as specified	113	
Procedure, not as specified in 3.3.4	114	
Cord and thread:		
Not specified type or size as applicable	115	
Color not as specified		205
Vent Construction:		
Vent reinforcement overlap, does not span two main seams	116	
Vent reinforcement band, improper assembly	117	

MIL-DTL-43649D(GL)

TABLE I. Canopy Visual Defects (Cont'd)

Defect	Classification	
	Major	Minor
Vent line length (across vent) not as specified:		
Less than $\frac{1}{4}$ inch		206
$\frac{1}{4}$ inch or more	118	
Twisted vent line:		
More than 360°		207
More than 360° , causing kinks in line	119	
Gore width at vent, measured C/L to C/L on adjacent radial seams, not as specified:		
Less than $\frac{1}{4}$ inch		208
$\frac{1}{4}$ inch or more	120	
Slot width, not as specified:		
Less than $\frac{1}{8}$ inch		209
$\frac{1}{8}$ inch or more	121	
Skirt reinforcement band improperly assembled	122	
Under fold (raw edge) skirt hem	123	
NOTE: When a raw edge is the result of over folding the edge extending more than $\frac{1}{2}$ inch but less than 1 inch, the raw edge may be trimmed and will not be scored as a defect. If the condition extends more than 1 inch from the inside edge of the skirt hem, the stitching will be removed and the hem refolded and restitched.		
Tucks, wherein section of gore fabric is caught in stitching of hem	124	
Suspension lines crossed	125	
Cut, frayed, or damaged suspension or vent lines	126	
Suspension line length, not as specified:		
Less than $\frac{3}{4}$ inch		210
$\frac{3}{4}$ inch or more	127	

MIL-DTL-43649D(GL)

TABLE I. Canopy Visual Defects (Cont'd)

Defect	Classification	
	Major	Minor
Suspension line twisted:		
More than 360°		211
More than 360°, causing kinks	128	
Stitches and stitching:		
Wrong type	129	
Two or more stitches per inch less than specified	130	
Two or more stitches per inch more than specified		212
Broken, skipped or missing stitches not overstitched as specified	131	
Open seam	132	
NOTE: A seam shall be classified as open when one or more stitches joining a seam are broken or where two or more skipped stitches occur. Repairs of open seams will not be scored as defects.		
Stitches and stitching (cont'd):		
Wrong type seam	133	
Missing or incomplete stitch pattern	134	
Runoff not restitched in accordance with specified pattern		213
Zigzag stitching not sewn through suspension lines	135	
Tension loose, resulting in loose top or bobbin thread, or tight tension, resulting in tightness or puckering of material		214
Thread ends not trimmed		215
Ends of stitching not secured as specified		216
Stitch pattern lengths:		
Less than $\frac{1}{8}$ inch minus		217
$\frac{1}{8}$ inch or more minus	136	
$\frac{1}{2}$ inch or more plus		218
Stitch pattern not complete	137	
Needle or feed dog damage	138	
Length of components and location dimensions not otherwise covered, not as specified:		
Up to 5 inches:		
Less than $\frac{1}{8}$ inch		219
$\frac{1}{8}$ inch or more	139	
5 inches or over:		
Less than $\frac{1}{4}$ inch		220
$\frac{1}{4}$ inch or more	140	

MIL-DTL-43649D(GL)

TABLE I. Canopy Visual Defects (Cont'd)

Defect	Classification	
	Major	Minor
Riser:		
Length overall, not as specified by:		
Less than $\frac{1}{2}$ inch		221
$\frac{1}{2}$ inch or more	141	
Loop length, not as specified by:		
Less than $\frac{1}{8}$ inch		222
$\frac{1}{8}$ inch or more	142	
Insertion of suspension line in core at skirt attachment loop and riser attachment point not as specified by:		
Less than $\frac{1}{4}$ inch minus		223
$\frac{1}{4}$ inch to $\frac{1}{2}$ inch	143	
More than $\frac{1}{2}$ inch plus		224
Ends of webbing and tape not seared as specified		225
Suspension line attachment loop length at skirt band not as specified by:		
Less than $\frac{1}{8}$ inch		226
$\frac{1}{8}$ inch or more	144	
Any component missing	145	
Any incomplete assembly	146	
Identification marking illegible, incomplete, or missing		227
Clevis:		
Component missing	147	
Part fractured, malformed, or damaged	148	
Corrosion or rust	149	

MIL-DTL-43649D(GL)

TABLE II. Deployment bag visual defects

Defect	Classification	
	Major	Minor
Cloth, webbing and tape:		
Any hole in cloth (except drill holes):		
$\frac{1}{4}$ inch diameter or less		201
More than $\frac{1}{4}$ inch diameter	101	
Color not as specified		202
Not specified type or class	102	
Cut or tear in cloth:		
$\frac{1}{2}$ inch or less		203
More than $\frac{1}{2}$ inch	103	
Darns, over 4 per bag	104	
Thread:		
Not specified type or size	105	
Color not as specified		204
Finished dimensions, body and flap (prior to assembly):		
Less than $\frac{1}{4}$ inch less than specified		205
$\frac{1}{4}$ inch or more less than specified	106	
More than $\frac{1}{2}$ inch more than specified		206
Stitches and stitching:		
Wrong type	107	
Two or more stitches per inch less than specified	108	
Two or more stitches per inch more than specified		207
Broken, skipped, or missing stitches not overstitched as specified	109	
Open seam	110	
NOTE: A seam shall be classified as open when one or more stitches joining a seam are broken or where two or more skipped stitches occur. Repairs of open seams will not be scored as defects.		
Runoff not restitched in accordance with specified pattern		208
Tension loose, resulting in exposed tope or bobbin thread, or tight tension, resulting in tightness or puckering of material		209
Ends of stitching not secured as specified		210

MIL-DTL-43649D(GL)

TABLE II. Deployment bag visual defects (cont'd)

Defect	Classification	
	Major	Minor
Stitch pattern lengths not as specified by:		
Less than $\frac{1}{8}$ inch		211
$\frac{1}{8}$ inch or more	111	
Thread ends not trimmed		212
Stitch pattern not completed	112	
Needle or feed dog damage	113	
Length of components and location dimensions, not otherwise covered, not as specified:		
Up to 5 inches:		
Less than $\frac{1}{8}$ inch		213
$\frac{1}{8}$ inch or more	114	
Less than $\frac{1}{4}$ inch		214
$\frac{1}{4}$ inch or more	115	
Partial assembly or any component missing	116	
Misassembly	117	
Marking illegible, incorrect or missing		215

TABLE III. Pack visual defects

Defect	Classification	
	Major	Minor
Cloth, webbing and tape:		
Any hole in cloth (except drill holes):		
$\frac{1}{4}$ inch diameter or less		201
More than $\frac{1}{4}$ inch diameter	101	
Color not as specified		202
Not specified type or class	102	
Cut or tear in cloth:		
$\frac{1}{2}$ inch or less		203
More than $\frac{1}{2}$ inch	103	

MIL-DTL-43649D(GL)

TABLE III. Pack visual defects (cont'd)

Defect	Classification	
	Major	Minor
Darns, over 4 per pack	104	
Thread:		
Not specified type or size	105	
Color not as specified		204
Finished dimensions of panel assemblies (prior to assembly):		
Less than $\frac{1}{4}$ inch less than specified		205
$\frac{1}{4}$ inch or more less than specified	106	
More than $\frac{1}{2}$ inch more than specified		206
Stitches and stitching:		
Wrong type	107	
Two or more stitches per inch less than specified		207
Two or more stitches per inch more than specified	108	
Broken, skipped, or missing stitches not overstitched as specified	109	
Open seam	110	
NOTE: A seam shall be classified as open when one or more stitches joining a seam are broken or where two or more skipped stitches occur. Repairs of open seams will not be scored as defects.		
Runoff not restitched in accordance with specified pattern		208
Tension loose, resulting in exposed top or bobbin thread or tight tension, resulting in tightness or puckering of materials		209
Ends of stitching not secured as specified		210
Stitch pattern lengths not as specified by:		
Less than $\frac{1}{8}$ inch		211
$\frac{1}{8}$ inch or more	111	
Thread ends not trimmed		212
Missing or incomplete stitch pattern	112	
Needle or feed dog damage	113	

MIL-DTL-43649D(GL)

TABLE III. Pack visual defects (cont'd)

Defect	Classification	
	Major	Minor
Length of components and location dimensions, not otherwise covered, not as specified:		
Up to 5 inches:		
Less than $\frac{1}{8}$ inch		213
$\frac{1}{8}$ inch or more	114	
5 inches or more:		
Less than $\frac{1}{4}$ inch		214
$\frac{1}{4}$ inch or more	115	
Partial assembly or any component missing	116	
Misassembly	117	
Marking illegible, incorrect, or missing		215

TABLE IV. Static line visual defects

Defect	Classification	
	Major	Minor
Webbing:		
Any hole, cut, tear or abrasion	101	
Not specified type or class	102	
Color not as specified		201
Length of static line not as specified by:		
Up to $\frac{1}{2}$ inch		202
$\frac{1}{2}$ inch or more	103	
Loop length:		
Up to $\frac{1}{4}$ inch less than specified		203
$\frac{1}{4}$ inch or more less than specified	104	
More than $\frac{1}{4}$ inch more than specified		204
Component missing	105	

MIL-DTL-43649D(GL)

TABLE IV. Static line visual defects (cont'd)

Defect	Classification	
	Major	Minor
Stitching:		
Wrong type	106	
Missing or incomplete stitch pattern	107	
Runoff not restitched in accordance with specified stitch pattern		205
Tension loose, resulting in loose top or bobbin thread, or tight tension, resulting in tightness or puckering of material		206
Ends of stitching not secured as specified		207
Broken, skipped, or missing stitches not overstitched as specified	108	
Open seam	109	
NOTE: A seam shall be classified as open when one or more stitches joining a seam are broken or where two or more skipped stitches occur. Repairs of open seams will not be scored as defects.		
Stitch pattern lengths not as specified by:		
Less than $\frac{1}{8}$ inch		208
$\frac{1}{8}$ to $\frac{1}{4}$ inch	110	
$\frac{1}{4}$ inch or more plus		209
Thread ends not trimmed		210
Ends of webbing not seared		211
Thread:		
Not specified type or size	111	
Color not as specified		212
Identification marking illegible, missing or incorrect		213
Clevis:		
Component missing	112	
Any part fractured, malformed, or damaged	113	

TABLE V. Drogue visual defects

Examine	Defect	Classification	
		Major	Minor
Material	Wrong color		201
	Not specified type or class	101	

MIL-DTL-43649D(GL)

TABLE V. Drogue visual defects (Cont'd)

Examine	Defect	Classification	
		Major	Minor
Design	Any characteristic not in accordance with specified requirement	102	
Construction and assembly	Any component missing, or not assembled or joined as specified	103	
Cleanness	Grease, dirt, oil, or other foreign matter		202
Seams	Open seam	104	
	Open seam overstitched less than 1 inch		203
NOTE: A seam shall be classified as open whenever breaks, runoffs, or two or more consecutive skips occur in stitching and are not overstitched or restitched as specified.			
Stitches and stitching	Not type of stitch specified	105	
	Ends of stitching not secured as specified (except where turned down under in a hem or held down by other stitching)		204
	One stitch per inch less than minimum specified		205
	Two or more stitches per inch less than minimum Specified	106	
	One or more stitches per inch in excess of maximum specified		206
	Loose tension, resulting in loose top or bobbin thread; or tight tension resulting in tightness or puckering of material at stitch line		207
Stitches and stitching (cont'd)	Thread ends not trimmed		208
	Any row of stitching missing	107	
	Needle chews	108	
	Stitching pattern not complete	109	
	Stitch margin or gage not as specified		209
	Stitching run off at edge cutting material	110	
Nylon cloth and tape	Holes, tears, or cuts	111	
	Abrasion or thin material	112	

MIL-DTL-43649D(GL)

TABLE V. Drogue visual defects (Cont'd)

Examine	Defect	Classification	
		Major	Minor
Nylon cord	Cut, tear, or break	113	
	Abrasion or seared area (except on ends of cord)	114	
	Any splice or not continuous		210
	Ends not seared		211
Identification marking	Missing, illegible, incorrect, wrong color or location, or not applied as specified		212

4.5 End item dimensional examination. The end items shall be examined for conformance to the dimensions specified in the TDP for the associated item. Only those dimensions that can be evaluated without damaging or disassembling the end items shall be examined. Any dimension not within the specified tolerance shall be classified as a defect.

4.6 Tests.

4.6.1 Air Permeability. The cloth of completed parachute assemblies shall be tested for air permeability to determine the compliance with the requirements of 3.3.2. The test shall be performed in accordance with ASTM D 737. The number of permeability readings shall be taken at widely separated points in each of the alternate gores around the canopy, and the average of the results determined. Failure of the canopy to meet the requirement of 3.3.2 shall constitute failure of the test.

5. PACKAGING

5.1 Packaging. For acquisition purposes, the packaging requirements shall be as specified in the contract or order (see 6.2). When actual packaging of material is to be performed by DoD personnel, these personnel need to contact the responsible packaging activity to ascertain requisite packaging requirements. Packaging requirements are maintained by the Inventory Control Point's packaging activity within the Military Department or Defense Agency, or within the Military Department's System Command. Packaging data retrieval is available from the managing Military Department's or Defense Agency's automated packaging files, CD-ROM products, or by contacting the responsible packaging activity.

MIL-DTL-43649D(GL)

6. NOTES

(This section contains information of a general explanatory nature that may be helpful, but is not mandatory.)

6.1 Intended use. The 12-foot and 26-foot diameter parachutes are intended for use in air-dropping non fragile cargo at high rates of descent. The 34-foot diameter parachute is intended for use in air-dropping cargo at normal rates of descent.

6.2 Acquisition requirements. Acquisition documents should specify the following:

- a. Title, number and date of this specification.
- b. Size parachute required (see 1.2.1).
- c. Parachute component(s) required, when procured separately (see 6.3).
- d. When a first article is required (see 3.1 and 4.2).
- e. Sampling plan (see 4.3).
- f. Packaging requirements (see 5.1).

6.3 Components. The following cargo parachute components may be procured separately when specified (see 6.2).

For 12-foot diameter cargo parachute:

Canopy assembly
Deployment bag
Static line

For 26-foot diameter cargo parachute:

Canopy assembly
Deployment bag
Static line

For 34-foot diameter cargo parachute:

Canopy assembly
Pack
Drogue
Static line

6.4 Subject term (keyword) listing.

Airdrop	Deployment bag
Canopy	Pack
Drogue	Static line

MIL-DTL-43649D(GL)

6.5 Changes from previous issue. Marginal notations are not used in this revision to identify changes with respect to the previous issue due to the extent of the changes.

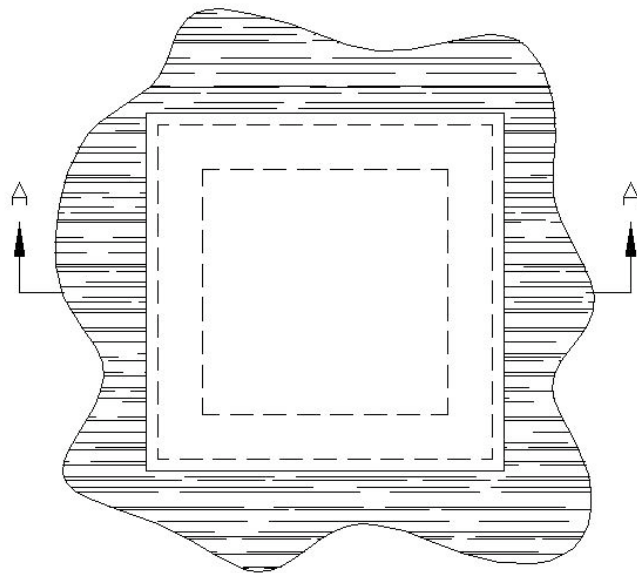
Custodians:
Army - GL2

Preparing Activity:
Army - GL2

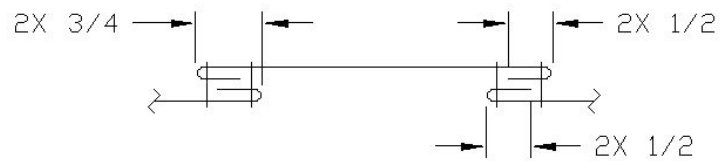
(Project 1670-1050)

NOTE: The activities listed above were interested in this document as of the date of this document. Since organizations and responsibilities can change, you should verify the currency of the information above using the ASSIST Online database at <http://assist.daps.dla.mil>.

MIL-DTL-43649D (GL)

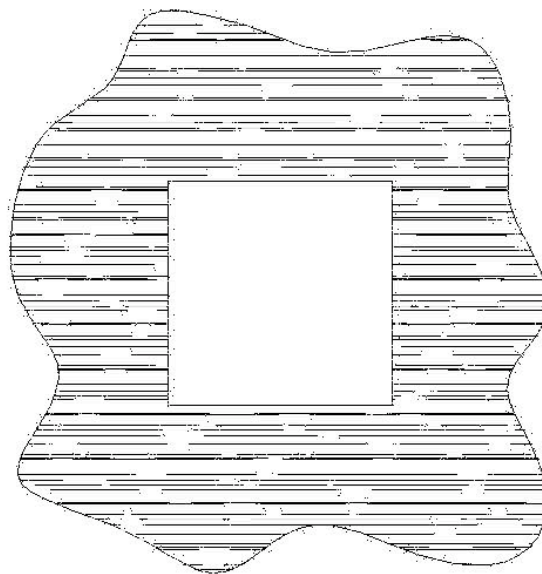


INSIDE VIEW



SECTION A-A

ALL STITCHING SHALL BE 1/8 INCH FROM EDGE
TOLERANCE: $\pm 1/16$ INCH



OUTSIDE VIEW