

INCH-POUND

MIL-DTL-24558/18B
3 October 2011
SUPERSEDING
MIL-DTL-24558/18A
w/AMENDMENT 1
17 February 2006

DETAIL SPECIFICATION SHEET

TERMINAL BOXES, CONNECTION, SUBMERSIBLE (15-FOOT), 600 VOLTS,
4-TERMINAL, 8-WIRE, SYMBOLS NO. 400.1 AND NO. 400.4,
4-TERMINAL, 12-WIRE, SYMBOLS NO. 400.2 AND NO. 400.3

This specification is approved for use by all Departments and Agencies of the Department of Defense.

The requirements for acquiring the products described herein shall consist of this specification sheet and MIL-DTL-24558, "Terminal Boxes, Connection, for Electrical and Electronic Systems, General Specification for".

REQUIREMENTS: The terminal boxes shall be as specified herein and in accordance with [tables I and II](#), and [figures 1 through 3](#).

1. Electrical rating. The terminal boxes shall have an electrical rating of 600 volts root mean square, and 600 volts direct current. The maximum current shall not exceed 15 amperes per stud of terminal board.

2. Dimensions and configuration. For dimensions and configuration see [figures 1 through 3](#). All dimensions in [figures 1 through 3](#) are expressed in decimal inches. Overall terminal box dimensions are approximate. Exact dimensions are shown in MIL-E-24142/5, "Enclosure for Electrical Fittings and Fixtures, Submersible, (15-Foot), Sizes 3R, 4R and 5R", and in MIL-E-24142/11, "Enclosures-Plastic, Submersible, (15-Foot) 3 and 4 - Inches Round, Grounded".

3. Tolerance. All tolerances not specified herein shall be in accordance with MIL-DTL-24558.

MIL-DTL-24558/18B

4. Standard parts. The standard parts shown in [table I](#) shall be used in the construction of the connection boxes specified herein. The numbers in circles shown on [figures 1](#) and [2](#) are the same as those shown in the "Item" column of [table I](#).

5. Enclosure. The enclosures shall be a 15-foot submersible type.

6. Finish. The interior of the enclosures may be painted or left unpainted at the contractor's option.

7. Weight. The weight of the connection boxes shall not exceed the following:

Symbol number 400.1 - 2.0 pounds	Symbol number 400.3 - 3.0 pounds
Symbol number 400.2 - 3.0 pounds	Symbol number 400.4 - 2.0 pounds

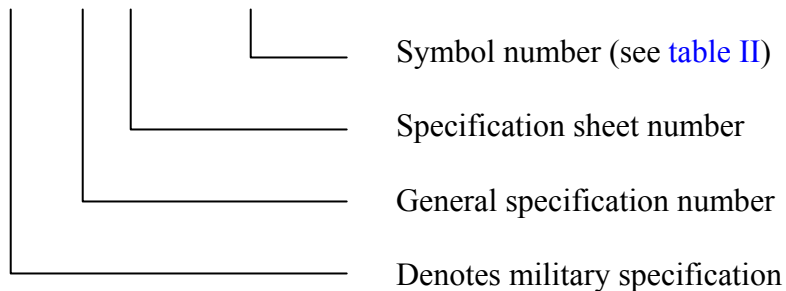
QUALITY ASSURANCE: First article inspection and quality conformance inspection shall be as specified in MIL-DTL-24558.

NOTES:

1. Drawing. The terminal boxes specified by this specification sheet were formerly covered on NAVSHIPS drawing no. 9000-S6202-74027.

2. Part or identifying number (PIN). The PIN to be used for terminal boxes acquired to this specification is created as follows:

M 24558/18 - XXXX



MIL-DTL-24558/18B

TABLE I. Parts list.

Item	Description	Qty	Part number or specification	Remarks
1	Enclosure assembly, 3-inch brass ¹	1	MIL-E-24142/5	M24142/5-001 for symbol 400.1
2	Enclosure assembly, 4-inch brass ¹	1	MIL-E-24142/5	M24142/5-002 for symbol 400.2
3	Enclosure assembly, 4-inch plastic	1	MIL-E-24142/11	M24142/11-002 for symbol 400.3
4	Enclosure assembly, 3-inch plastic	1	MIL-E-24142/11	M24142/11-001 for symbol 400.4
5	Terminal board assembly	1	A-A-59125/18	13TB4 ²
6	Identification plate	1	MIL-DTL-24558	Figure 6
7	Information plate	1	MIL-DTL-24558	Figure 6
8	RDH machine screw 6-32 X 0.500	2	Commercial	Brass
9	Washer, #6 external tooth	2	Commercial	Bronze
10	Pad	2	MIL-DTL-24558	Figure 5

¹ Box piece 23 or 44, cover piece 2 or 40, pad piece 29 and gasket ring piece 24 or 42 of NAVSEA drawing no. 9000-803-74210 may be used as an alternate for the 3-inch and 4-inch enclosure assembly respectively, provided that the box height and mounting details are modified to comply to those specified herein.

² To ensure electrical clearance requirements of MIL-E-917E, "Electric Power Equipment Basic Requirements," are met, use wire lug terminal size L82 in accordance with MIL-T-16366."

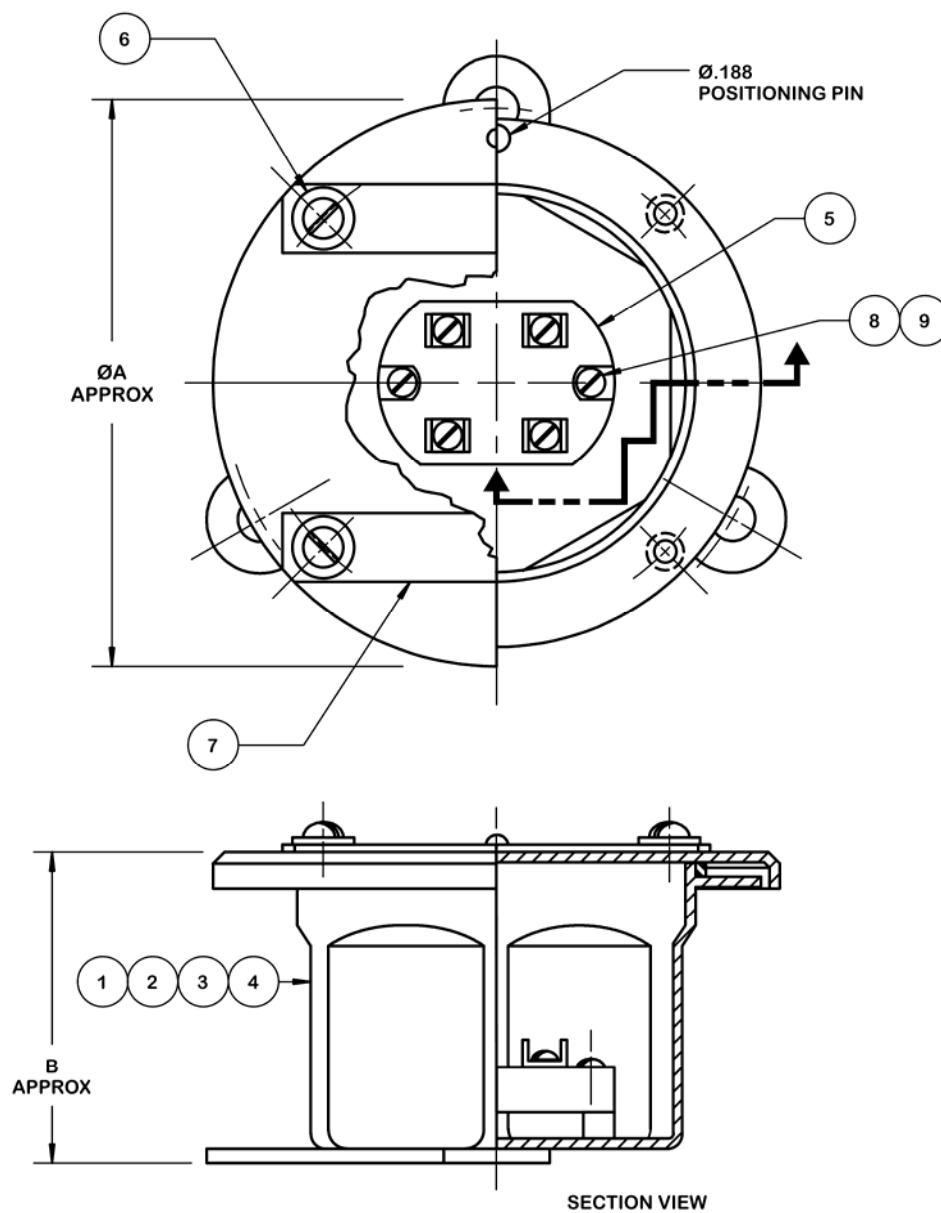
TABLE II. Symbol number description.

Symbol number	Remarks
400.1	1
400.2	2
400.3	2
400.4	1

¹ Three-inch connection boxes are to be used in installations requiring one or two cables, except that four small cables such as type LSDSGU-4 of MIL-DTL-24643/15 may be installed. The total number of conductors shall not exceed eight. The maximum number of wires to be connected to a single terminal shall not exceed two.

² Four-inch connection boxes are to be used in installations requiring three to five cables. The total number of wires shall not exceed twelve. The maximum number of wires to be connected to a single terminal shall not exceed three.

MIL-DTL-24558/18B



Symbol number	ØA	B
400.1 and 400.4	4.625	2.750
400.2 and 400.3	5.750	3.500

FIGURE 1. Connection box assembly.

MIL-DTL-24558/18B

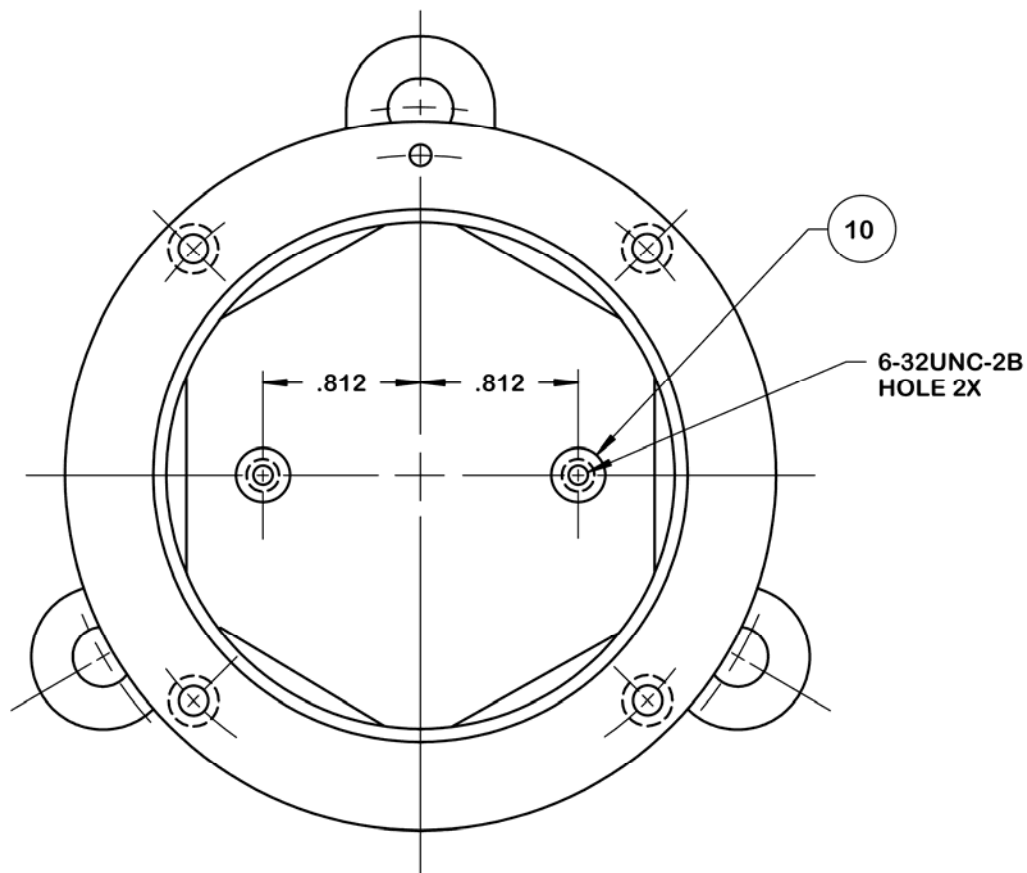


FIGURE 2. Location of terminal board mounting pads.

MIL-DTL-24558/18B

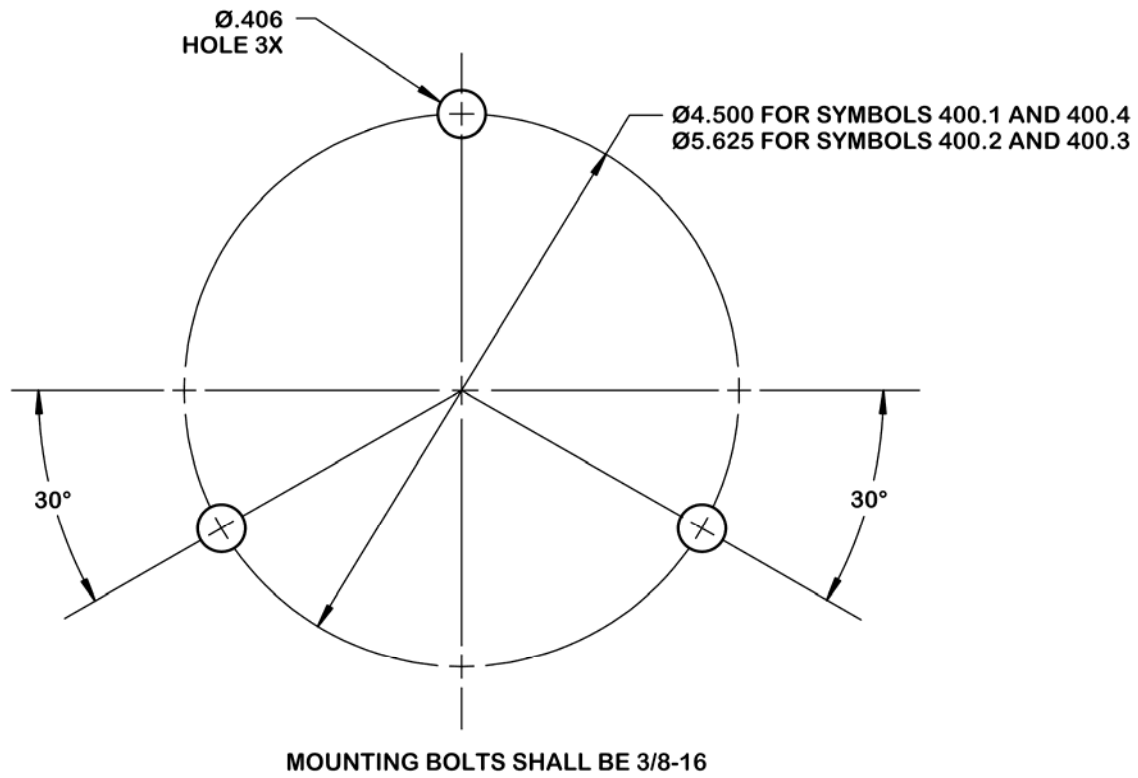


FIGURE 3. Mounting dimensions.

MIL-DTL-24558/18B

CHANGES FROM PREVIOUS ISSUE. Marginal notations are not used in this revision to identify changes with respect to the previous issue due to the extent of the changes.

Custodians:

Navy - SH

DLA - GS

Preparing Activity:

DLA - GS4

(Project 5940-2011-045)

NOTE: The activities listed above were interested in this document as of the date of this document. Since organizations and responsibilities can change, you should verify the currency of the information above using the ASSIST database at <https://assist.daps.dla.mil/>.