

INCH-POUND

MIL-DTL-15370/3F
 22 October 2012
 SUPERSEDING
 MIL-DTL-15370/3E
 7 May 2008

DETAIL SPECIFICATION SHEET

COUPLERS, DIRECTIONAL (COAXIAL, SERIES N CONNECTORS)

This specification is approved for use by all Departments and Agencies of the Department of Defense.

The requirements for acquiring the couplers described herein shall consist of this specification sheet and MIL-DTL-15370.

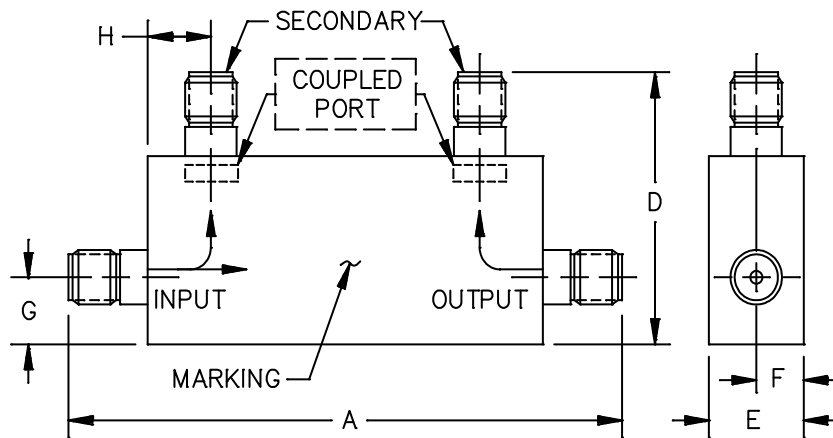


FIGURE 1. Dimensions and configuration for part numbers M15370/3-007, M15370/3-009, M15370/3-015, and M15370/3-016.

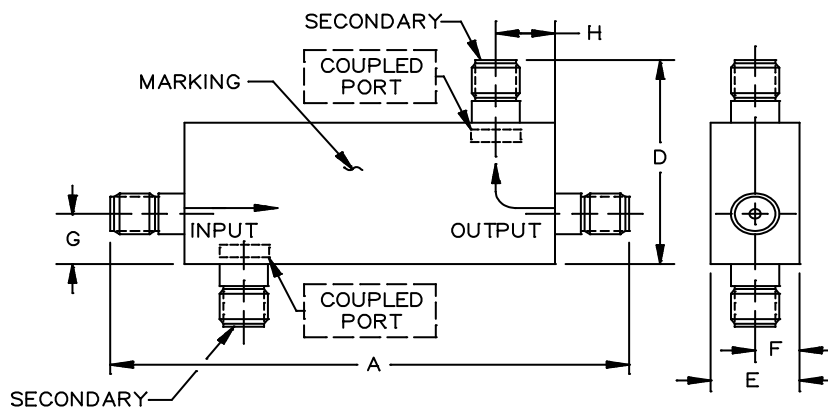


FIGURE 2. Dimensions and configuration for part number: M15370/3-005.

MIL-DTL-15370/3F

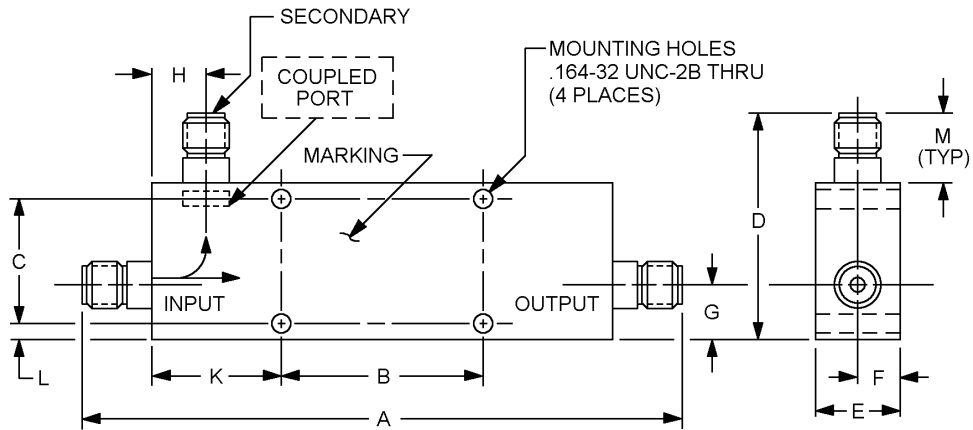


FIGURE 3. Dimensions and configuration for part numbers M15370/3-001 through M15370/3-006, M15370/3-008, M15370/3-010 through M15370/3-014, M15370/3-017 through M15370/3-033, M15370/3-041 through M15370/3-045.

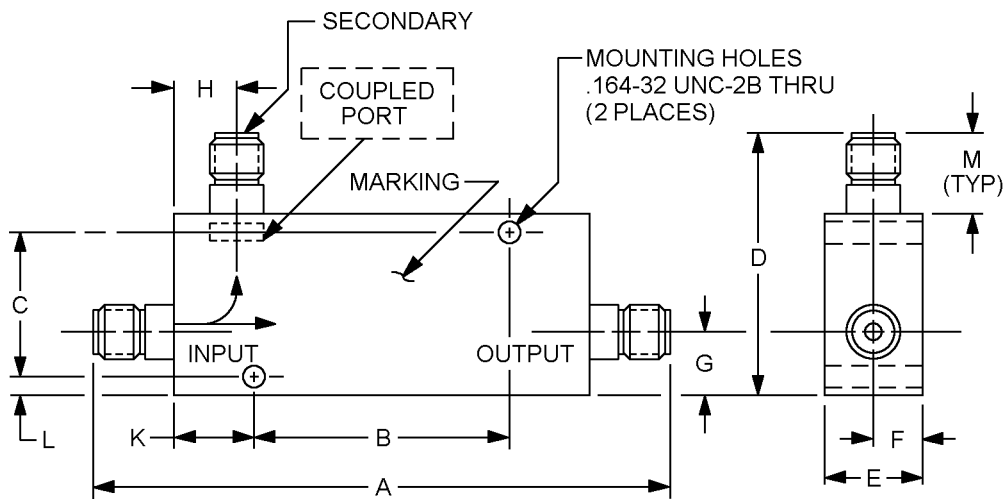


FIGURE 4. Dimensions and configuration for part numbers M15370/3-034 through M15370/3-036.

MIL-DTL-15370/3F

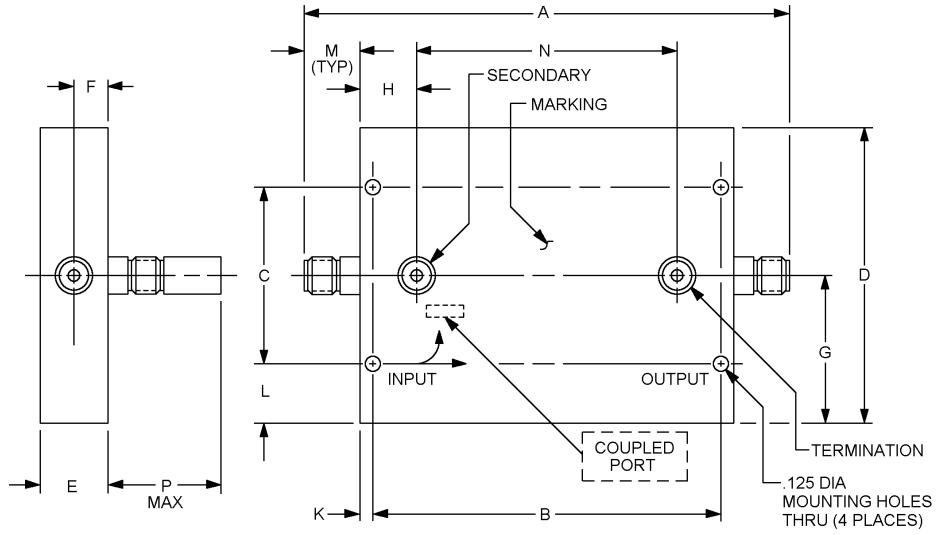
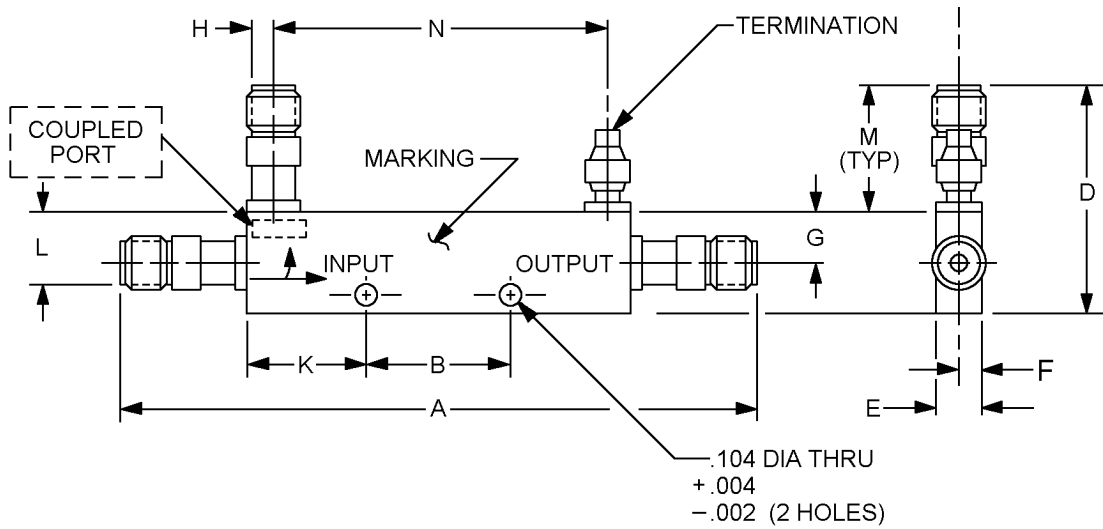


FIGURE 5. Dimensions and configuration for part number M15370/3-037.



Inches	mm
.002	0.05
.004	0.10
.104	2.64

FIGURE 6. Dimensions and configuration for part numbers M15370/3-038 through M15370/3-040.

MIL-DTL-15370/3F

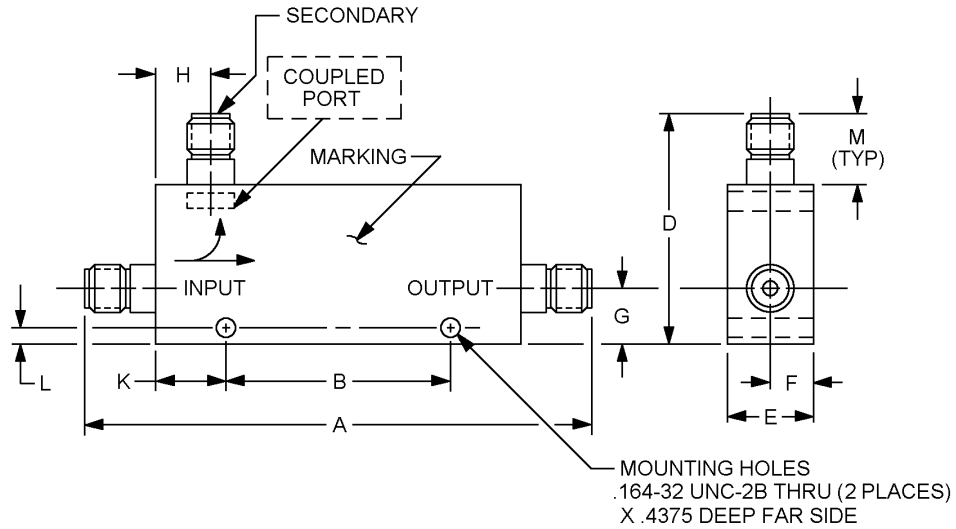


FIGURE 7. Dimensions and configuration for part numbers M15370/3-046 and M15370/3-047.

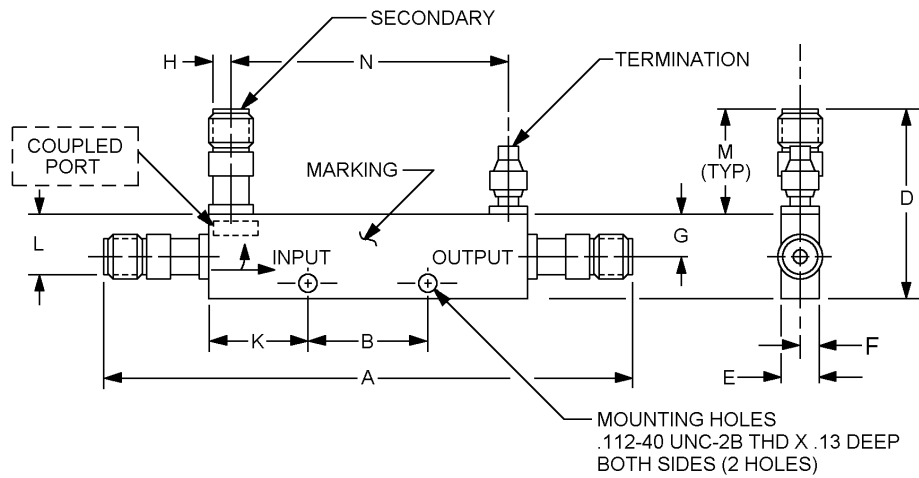


FIGURE 8. Dimensions and configuration for part number M15370/3-048.

Inches	mm
.002	0.05
.004	0.10
.104	2.64

MIL-DTL-15370/3F

REQUIREMENTS:

Design, construction and physical dimensions: See figures 1 through 8 and table I.

Connectors: Type N in accordance with MIL-PRF-39012 and table II herein.

Weight: See table I.

Temperature range: -54°C to +105°C.

Frequency range: See table II.

Coupling: See table II.

Coupling tolerance: See table II.

Coupling variation: See table II.

Effective directivity: See table II.

Insertion loss: See table II.

VSWR: See table II.

Power: See table II.

Marking: See figures 1 through 8.

Cross-reference data: See table III.

Part number: M15370/3- (and a dash number from table I).

TABLE I. Physical characteristics.

Dash number	Dimensions 1/ 2/ 3/												Figure number	Weight (max)
	A		B		C		D		E		F 4/			
	Min	Max	Min	Max	Min	Max	Min	Max	Min	Max	Min	Max		
001	12.125 (307.98)	12.250 (311.15)	2.938 (74.62)	3.063 (77.80)	1.625 (41.27)	1.750 (44.45)	2.814 (71.47)	2.938 (74.62)	.814 (20.68)	.938 (23.83)	.407 (10.34)	.469 (11.91)	3	2.2 lbs.
002	5.563 (141.30)	5.688 (144.48)	1.027 (26.09)	1.153 (29.29)	1.625 (41.27)	1.750 (44.45)	2.814 (71.47)	2.938 (74.62)	.814 (20.68)	.938 (23.83)	.407 (10.34)	.469 (11.91)	3	1.1 lbs.
003	5.563 (141.30)	5.688 (144.48)	1.027 (26.09)	1.153 (29.29)	1.625 (41.27)	1.750 (44.45)	2.814 (71.47)	2.938 (74.62)	.814 (20.68)	.938 (23.83)	.407 (10.34)	.469 (11.91)	3	1.1 lbs.
004	6.437 (163.50)	6.563 (166.70)	1.938 (49.23)	2.063 (52.40)	1.625 (41.27)	1.750 (44.45)	2.814 (71.47)	2.938 (74.62)	.814 (20.68)	.938 (23.83)	.407 (10.34)	.469 (11.91)	3	1.1 lbs.
005	8.938 (227.03)	9.063 (230.20)	---	---	---	---	2.938 (74.63)	3.063 (77.80)	1.814 (46.08)	1.938 (49.23)	.907 (23.04)	.969 (24.61)	2	3.0 lbs.
006	12.125 (307.98)	12.250 (311.15)	2.938 (74.62)	3.063 (77.80)	1.625 (41.27)	1.750 (44.45)	2.814 (71.47)	2.938 (74.62)	.814 (20.68)	.938 (23.83)	.407 (10.34)	.469 (11.91)	3	2.2 lbs.
007	9.000 (228.60)	9.125 (231.78)	---	---	---	---	2.437 (61.90)	2.563 (65.10)	1.814 (46.08)	1.938 (49.23)	.907 (23.04)	.969 (24.61)	1	2.0 lbs.
008	5.563 (141.30)	5.688 (144.48)	1.027 (26.09)	1.153 (29.29)	1.625 (41.27)	1.750 (44.45)	2.814 (71.47)	2.938 (74.62)	.814 (20.68)	.938 (23.83)	.407 (10.34)	.469 (11.91)	3	1.1 lbs.
009	8.938 (227.03)	9.063 (230.20)	---	---	---	---	2.437 (61.90)	2.563 (65.10)	1.814 (46.08)	1.938 (49.23)	.907 (23.04)	.969 (24.61)	1	1.7 lbs.
010	6.437 (163.50)	6.563 (166.70)	1.938 (49.23)	2.063 (52.40)	1.625 (41.27)	1.750 (44.45)	2.814 (71.47)	2.938 (74.62)	.814 (20.68)	.938 (23.83)	.407 (10.34)	.469 (11.91)	3	1.1 lbs.
011	12.188 (309.58)	12.313 (312.75)	2.938 (74.62)	3.063 (77.80)	1.625 (41.27)	1.750 (44.45)	2.814 (71.47)	2.938 (74.62)	.814 (20.68)	.938 (23.83)	.407 (10.34)	.469 (11.91)	3	2.2 lbs.
012	5.563 (141.30)	5.688 (144.48)	1.027 (26.09)	1.153 (29.29)	1.625 (41.27)	1.750 (44.45)	2.814 (71.47)	2.938 (74.62)	.814 (20.68)	.938 (23.83)	.407 (10.34)	.469 (11.91)	3	1.1 lbs.
013	5.563 (141.30)	5.688 (144.48)	1.027 (26.09)	1.153 (29.29)	1.625 (41.27)	1.750 (44.45)	2.814 (71.47)	2.938 (74.62)	.814 (20.68)	.938 (23.83)	.407 (10.34)	.469 (11.91)	3	1.1 lbs.
014	6.437 (163.50)	6.563 (166.70)	1.938 (49.23)	2.063 (52.40)	1.625 (41.27)	1.750 (44.45)	2.814 (71.47)	2.938 (74.62)	.814 (20.68)	.938 (23.83)	.407 (10.34)	.469 (11.91)	3	1.1 lbs.
015	5.063 (128.60)	5.188 (131.78)	---	---	---	---	3.125 (79.38)	3.250 (82.55)	1.063 (27.00)	1.188 (30.18)	.531 (13.50)	.594 (15.09)	1	1.1 lbs.
016	5.063 (128.60)	5.188 (131.78)	---	---	---	---	3.125 (79.38)	3.250 (82.55)	1.188 (30.18)	1.313 (33.35)	.594 (15.09)	.656 (16.67)	1	1.1 lbs.
017	7.45 (189.23)	8.05 (204.47)	2.97 (75.44)	3.03 (76.96)	1.673 (42.49)	1.693 (43.00)	2.85 (72.39)	2.91 (73.91)	.85 (21.59)	.91 (23.11)	.425 (10.80)	.455 (11.56)	3	1.6 lbs.
018	7.45 (189.23)	8.05 (204.47)	2.97 (75.44)	3.03 (76.96)	1.673 (42.49)	1.693 (43.00)	2.85 (72.39)	2.91 (73.91)	.85 (21.59)	.91 (23.11)	.425 (10.80)	.455 (11.56)	3	1.6 lbs.
019	13.67 (347.22)	13.73 (348.74)	2.97 (75.44)	3.03 (76.96)	1.673 (42.49)	1.703 (43.26)	2.85 (72.39)	2.91 (73.91)	.85 (21.59)	.91 (23.11)	.425 (10.80)	.455 (11.56)	3	2.1 lbs.
020	13.55 (344.17)	13.61 (345.69)	2.97 (75.44)	3.03 (76.96)	1.673 (42.49)	1.703 (43.26)	2.85 (72.39)	2.91 (73.91)	.85 (21.59)	.91 (23.11)	.425 (10.80)	.455 (11.56)	3	2.1 lbs.
021	13.55 (344.17)	13.61 (345.69)	2.97 (75.44)	3.03 (76.96)	1.797 (45.64)	1.827 (46.41)	2.97 (75.44)	3.03 (76.96)	.85 (21.59)	.91 (23.11)	.425 (10.80)	.455 (11.56)	3	2.1 lbs.

See footnotes at end of table.

MIL-DTL-15370/3F

TABLE I. Physical characteristics - Continued.

Dash number	Dimensions <u>1/</u> <u>2/</u> <u>3/</u>													
	G <u>4/</u>		H <u>4/</u>		K		L		M		N		P	
	Min	Max	Min	Max	Min	Max	Min	Max	Min	Max	Min	Max	Min	Max
001	.85 (21.59)	.91 (23.11)	.47 (11.94)	.53 (13.46)	1.47 (37.34)	1.53 (38.86)	.16 (4.06)	.22 (5.59)	.72 (18.29)	.78 (19.81)	---	---	---	---
002	.85 (21.59)	.91 (23.11)	.47 (11.94)	.53 (13.46)	1.47 (37.34)	1.53 (38.86)	.16 (4.06)	.22 (5.59)	.72 (18.29)	.78 (19.81)	---	---	---	---
003	.85 (21.59)	.91 (23.11)	.47 (11.94)	.53 (13.46)	1.47 (37.34)	1.53 (38.86)	.16 (4.06)	.22 (5.59)	.72 (18.29)	.78 (19.81)	---	---	---	---
004	.53 (13.46)	.59 (14.99)	.63 (16.00)	.69 (17.53)	1.47 (37.34)	1.53 (38.86)	.16 (4.06)	.22 (5.59)	.72 (18.29)	.78 (19.81)	---	---	---	---
005	1.00 (25.40)	1.06 (26.92)	.66 (16.76)	.72 (18.29)	---	---	---	---	---	---	---	---	---	---
006	.85 (21.59)	.91 (23.11)	.47 (11.94)	.53 (13.46)	1.47 (37.34)	1.53 (38.86)	.16 (4.06)	.22 (5.59)	.72 (18.29)	.78 (19.81)	---	---	---	---
007	.58 (14.73)	.64 (16.26)	1.57 (39.88)	1.63 (41.40)	---	---	---	---	---	---	---	---	---	---
008	.85 (21.59)	.91 (23.11)	.47 (11.94)	.53 (13.46)	1.47 (37.34)	1.53 (38.86)	.16 (4.06)	.22 (5.59)	.72 (18.29)	.78 (19.81)	---	---	---	---
009	.58 (14.73)	.64 (16.26)	1.57 (39.88)	1.63 (41.40)	---	---	---	---	---	---	---	---	---	---
010	.66 (16.76)	.72 (18.29)	.53 (13.46)	.59 (14.99)	1.47 (37.34)	1.53 (38.86)	.16 (4.06)	.22 (5.59)	.72 (18.29)	.78 (19.81)	---	---	---	---
011	.66 (16.76)	.72 (18.29)	.47 (11.94)	.53 (13.46)	1.47 (37.34)	1.53 (38.86)	.16 (4.06)	.22 (5.59)	.72 (18.29)	.78 (19.81)	---	---	---	---
012	.66 (16.76)	.72 (18.29)	.47 (11.94)	.53 (13.46)	1.47 (37.34)	1.53 (38.86)	.16 (4.06)	.22 (5.59)	.72 (18.29)	.78 (19.81)	---	---	---	---
013	.66 (16.76)	.72 (18.29)	.47 (11.94)	.53 (13.46)	1.47 (37.34)	1.53 (38.86)	.16 (4.06)	.22 (5.59)	.72 (18.29)	.78 (19.81)	---	---	---	---
014	.66 (16.76)	.72 (18.29)	.53 (13.46)	.59 (14.99)	1.47 (37.34)	1.53 (38.86)	.16 (4.06)	.22 (5.59)	.72 (18.29)	.78 (19.81)	---	---	---	---
015	.75 (19.05)	.81 (20.57)	.87 (22.10)	.93 (23.62)	---	---	---	---	---	---	---	---	---	---
016	.75 (19.05)	.81 (20.57)	.87 (22.10)	.93 (23.62)	---	---	---	---	---	---	---	---	---	---
017	.85 (21.59)	.91 (23.11)	.47 (11.94)	.53 (13.46)	1.47 (37.34)	1.53 (38.86)	.16 (4.06)	.22 (5.59)	.72 (18.29)	.78 (19.81)	---	---	---	---
018	.85 (21.59)	.91 (23.11)	.47 (11.94)	.53 (13.46)	1.47 (37.34)	1.53 (38.86)	.16 (4.06)	.22 (5.59)	.72 (18.29)	.78 (19.81)	---	---	---	---
019	.80 (20.32)	.86 (21.84)	.47 (11.94)	.53 (13.46)	1.47 (37.34)	1.53 (38.86)	.16 (4.06)	.22 (5.59)	.72 (18.29)	.78 (19.81)	---	---	---	---
020	.66 (16.76)	.72 (18.29)	.47 (11.94)	.53 (13.46)	1.47 (37.34)	1.53 (38.86)	.16 (4.06)	.22 (5.59)	.72 (18.29)	.78 (19.81)	---	---	---	---
021	.64 (16.26)	.70 (17.78)	.47 (11.94)	.53 (13.46)	1.47 (37.34)	1.53 (38.86)	.16 (4.06)	.22 (5.59)	.72 (18.29)	.78 (19.81)	---	---	---	---

See footnotes at end of table.

MIL-DTL-15370/3F

TABLE I. Physical characteristics - Continued.

Dash number	Dimensions <u>1/</u> <u>2/</u> <u>3/</u>												Figure number	Weight (max)
	A		B		C		D		E		F <u>4/</u>			
	Min	Max	Min	Max	Min	Max	Min	Max	Min	Max	Min	Max		
022	11.55 (293.37)	11.61 (294.89)	2.97 (75.44)	3.03 (76.96)	1.673 (42.49)	1.703 (43.26)	2.85 (72.39)	2.91 (73.91)	.85 (21.59)	.91 (23.11)	.425 (10.80)	.455 (11.56)	3	2.1 lbs.
023	11.55 (293.37)	11.61 (294.89)	2.97 (75.44)	3.03 (76.96)	1.673 (42.49)	1.703 (43.26)	2.85 (72.39)	2.91 (73.91)	.85 (21.59)	.91 (23.11)	.425 (10.80)	.455 (11.56)	3	2.1 lbs.
024	11.55 (293.37)	11.61 (294.89)	2.97 (75.44)	3.03 (76.96)	1.673 (42.49)	1.703 (43.26)	2.85 (72.39)	2.91 (73.91)	.85 (21.59)	.91 (23.11)	.425 (10.80)	.455 (11.56)	3	2.1 lbs.
025	7.60 (193.04)	7.66 (194.56)	2.97 (75.44)	3.03 (76.96)	1.673 (42.49)	1.703 (43.26)	2.85 (72.39)	2.91 (73.91)	.85 (21.59)	.91 (23.11)	.425 (10.80)	.455 (11.56)	3	1.3 lbs.
026	7.60 (193.04)	7.66 (194.56)	2.97 (75.44)	3.03 (76.96)	1.673 (42.49)	1.703 (43.26)	2.85 (72.39)	2.91 (73.91)	.85 (21.59)	.91 (23.11)	.425 (10.80)	.455 (11.56)	3	1.3 lbs.
027	7.60 (193.04)	7.66 (194.56)	2.97 (75.44)	3.03 (76.96)	1.673 (42.49)	1.703 (43.26)	2.85 (72.39)	2.91 (73.91)	.85 (21.59)	.91 (23.11)	.425 (10.80)	.455 (11.56)	3	1.3 lbs.
028	5.56 (141.22)	5.62 (142.75)	1.06 (26.92)	1.12 (28.45)	1.673 (42.49)	1.703 (43.26)	2.85 (72.39)	2.91 (73.91)	.85 (21.59)	.91 (23.11)	.425 (10.80)	.455 (11.56)	3	1.1 lbs.
029	5.56 (141.22)	5.62 (142.75)	1.06 (26.92)	1.12 (28.45)	1.673 (42.49)	1.703 (43.26)	2.85 (72.39)	2.91 (73.91)	.85 (21.59)	.91 (23.11)	.425 (10.80)	.455 (11.56)	3	1.1 lbs.
030	5.56 (141.22)	5.62 (142.75)	1.06 (26.92)	1.12 (28.45)	1.673 (42.49)	1.703 (43.26)	2.85 (72.39)	2.91 (73.91)	.85 (21.59)	.91 (23.11)	.425 (10.80)	.455 (11.56)	3	1.1 lbs.
031	7.47 (189.74)	7.53 (191.26)	2.97 (75.44)	3.03 (76.96)	1.673 (42.49)	1.703 (43.26)	2.85 (72.39)	2.91 (73.91)	.85 (21.59)	.91 (23.11)	.425 (10.80)	.455 (11.56)	3	1.6 lbs.
032	7.47 (189.74)	7.53 (191.26)	2.97 (75.44)	3.03 (76.96)	1.673 (42.49)	1.703 (43.26)	2.85 (72.39)	2.91 (73.91)	.85 (21.59)	.91 (23.11)	.425 (10.80)	.455 (11.56)	3	1.6 lbs.
033	7.47 (189.74)	7.53 (191.26)	2.97 (75.44)	3.03 (76.96)	1.673 (42.49)	1.703 (43.26)	2.85 (72.39)	2.91 (73.91)	.85 (21.59)	.91 (23.11)	.425 (10.80)	.455 (11.56)	3	1.6 lbs.
034	3.97 (100.84)	4.03 (102.36)	1.110 (28.19)	1.140 (28.96)	1.079 (27.41)	1.109 (28.17)	2.19 (55.63)	2.25 (57.15)	.85 (21.59)	.91 (23.11)	.425 (10.80)	.455 (11.56)	4	0.8 lbs.
035	3.97 (100.84)	4.03 (102.36)	1.110 (28.19)	1.140 (28.96)	1.079 (27.41)	1.109 (28.17)	2.19 (55.63)	2.25 (57.15)	.85 (21.59)	.91 (23.11)	.425 (10.80)	.455 (11.56)	4	0.8 lbs.
036	3.97 (100.84)	4.03 (102.36)	1.110 (28.19)	1.140 (28.96)	1.079 (27.41)	1.109 (28.17)	2.19 (55.63)	2.25 (57.15)	.85 (21.59)	.91 (23.11)	.425 (10.80)	.455 (11.56)	4	0.8 lbs.
037	8.04 (204.22)	8.10 (205.74)	6.219 (157.96)	6.249 (158.72)	2.985 (75.82)	3.015 (76.58)	5.09 (129.29)	5.15 (130.81)	.90 (22.9)	.92 (23.4)	.36 (9.1)	.38 (9.7)	5	2.2 lbs.
038	5.38 (136.65)	5.44 (138.18)	.985 (25.02)	1.015 (25.78)	---	---	1.92 (48.77)	1.98 (50.29)	.50 (12.70)	.56 (14.22)	.25 (6.35)	.28 (7.11)	6	2.2 lbs.
039	5.60 (142.24)	5.68 (144.3)	2.297 (58.34)	2.334 (59.28)	---	---	1.75 (44.45)	1.83 (46.5)	.50 (12.70)	.56 (14.22)	.25 (6.35)	.28 (7.11)	6	2.2 lbs.
040	4.85 (123.19)	4.91 (124.71)	---	---	---	---	3.85 (97.79)	3.91 (99.31)	1.09 (27.69)	1.15 (29.21)	.55 (13.97)	.58 (14.73)	6	1.1 lbs.

See footnotes at end of table.

TABLE I. Physical characteristics - Continued.

Dash number	Dimensions <u>1/ 2/ 3/</u>													
	G <u>4/</u>		H <u>4/</u>		K		L		M		N		P	
	Min	Max	Min	Max	Min	Max	Min	Max	Min	Max	Min	Max	Min	Max
022	.85 (21.59)	.91 (23.11)	.47 (11.94)	.53 (13.46)	1.47 (37.34)	1.53 (38.86)	.16 (4.06)	.22 (5.59)	.72 (18.29)	.78 (19.81)	---	---	---	---
023	.85 (21.59)	.91 (23.11)	.47 (11.94)	.53 (13.46)	1.47 (37.34)	1.53 (38.86)	.16 (4.06)	.22 (5.59)	.72 (18.29)	.78 (19.81)	---	---	---	---
024	.66 (16.76)	.72 (18.29)	.47 (11.94)	.53 (13.46)	1.47 (37.34)	1.53 (38.86)	.16 (4.06)	.22 (5.59)	.72 (18.29)	.78 (19.81)	---	---	---	---
025	.85 (21.59)	.91 (23.11)	.47 (11.94)	.53 (13.46)	1.47 (37.34)	1.53 (38.86)	.16 (4.06)	.22 (5.59)	.72 (18.29)	.78 (19.81)	---	---	---	---
026	.85 (21.59)	.91 (23.11)	.47 (11.94)	.53 (13.46)	1.47 (37.34)	1.53 (38.86)	.16 (4.06)	.22 (5.59)	.72 (18.29)	.78 (19.81)	---	---	---	---
027	.66 (16.76)	.72 (18.29)	.47 (11.94)	.53 (13.46)	1.47 (37.34)	1.53 (38.86)	.16 (4.06)	.22 (5.59)	.72 (18.29)	.78 (19.81)	---	---	---	---
028	.85 (21.59)	.91 (23.11)	.47 (11.94)	.53 (13.46)	1.47 (37.34)	1.53 (38.86)	.16 (4.06)	.22 (5.59)	.72 (18.29)	.78 (19.81)	---	---	---	---
029	.85 (21.59)	.91 (23.11)	.47 (11.94)	.53 (13.46)	1.47 (37.34)	1.53 (38.86)	.16 (4.06)	.22 (5.59)	.72 (18.29)	.78 (19.81)	---	---	---	---
030	.66 (16.76)	.72 (18.29)	.47 (11.94)	.53 (13.46)	1.47 (37.34)	1.53 (38.86)	.16 (4.06)	.22 (5.59)	.72 (18.29)	.78 (19.81)	---	---	---	---
031	.63 (16.00)	.69 (17.53)	.63 (16.00)	.69 (17.53)	1.47 (37.34)	1.53 (38.86)	.16 (4.06)	.22 (5.59)	.72 (18.29)	.78 (19.81)	---	---	---	---
032	.63 (16.00)	.69 (17.53)	.63 (16.00)	.69 (17.53)	1.47 (37.34)	1.53 (38.86)	.16 (4.06)	.22 (5.59)	.72 (18.29)	.78 (19.81)	---	---	---	---
033	.63 (16.00)	.69 (17.53)	.63 (16.00)	.69 (17.53)	1.47 (37.34)	1.53 (38.86)	.16 (4.06)	.22 (5.59)	.72 (18.29)	.78 (19.81)	---	---	---	---
034	.56 (14.22)	.62 (15.75)	.56 (14.22)	.62 (15.75)	.66 (16.76)	.72 (18.29)	.16 (4.06)	.22 (5.59)	.72 (18.29)	.78 (19.81)	---	---	---	---
035	.56 (14.22)	.62 (15.75)	.56 (14.22)	.62 (15.75)	.66 (16.76)	.72 (18.29)	.16 (4.06)	.22 (5.59)	.72 (18.29)	.78 (19.81)	---	---	---	---
036	.56 (14.22)	.62 (15.75)	.56 (14.22)	.62 (15.75)	.66 (16.76)	.72 (18.29)	.16 (4.06)	.22 (5.59)	.72 (18.29)	.78 (19.81)	---	---	---	---
037	2.50 (63.60)	2.56 (65.02)	.86 (21.84)	.92 (23.37)	.14 (3.56)	.20 (5.08)	1.00 (25.40)	1.06 (26.92)	.72 (18.29)	.78 (19.81)	4.64 (117.86)	4.70 (119.38)	---	2.00 (50.80)
038	.44 (11.18)	.50 (12.70)	.22 (5.59)	.28 (7.11)	1.08 (27.43)	1.14 (28.96)	.67 (17.02)	.73 (18.54)	1.06 (26.92)	1.12 (28.45)	2.69 (68.33)	2.75 (69.85)	---	---
039	.39 (9.91)	.45 (11.43)	.22 (5.59)	.28 (7.11)	.53 (13.46)	.59 (14.99)	.56 (14.22)	.62 (15.75)	1.06 (26.92)	1.12 (28.45)	2.91 (73.91)	2.97 (75.44)	---	---
040	.97 (24.64)	1.03 (26.16)	.67 (17.02)	.73 (18.54)	---	---	---	---	.67 (17.02)	.73 (18.54)	1.35 (34.29)	1.41 (35.81)	---	---

See footnotes at end of table.

TABLE I. Physical characteristics - Continued.

Dash number	Dimensions <u>1/</u> <u>2/</u> <u>3/</u>												Figure number	Weight (max)
	A		B		C		D		E		F <u>4/</u>			
	Min	Max	Min	Max	Min	Max	Min	Max	Min	Max	Min	Max		
041	7.45 (189.23)	8.05 (204.47)	2.97 (75.44)	3.03 (76.96)	1.673 (42.49)	1.693 (43.00)	2.85 (72.39)	2.91 (73.91)	.85 (21.59)	.91 (23.11)	.425 (10.80)	.455 (11.56)	3	1.6 lbs.
042	7.45 (189.23)	8.05 (204.47)	2.97 (75.44)	3.03 (76.96)	1.673 (42.49)	1.693 (43.00)	2.85 (72.39)	2.91 (73.91)	.85 (21.59)	.91 (23.11)	.425 (10.80)	.455 (11.56)	3	1.6 lbs.
043	5.563 (141.30)	5.688 (144.48)	1.027 (26.09)	1.153 (29.29)	1.625 (41.27)	1.750 (44.45)	2.814 (71.47)	2.938 (74.62)	.814 (20.68)	.938 (23.83)	.407 (10.34)	.469 (11.91)	3	1.1 lbs.
044	4.23 (107.44)	4.35 (110.49)	3.26 (82.80)	3.32 (84.32)	1.27 (32.25)	1.33 (33.78)	2.44 (61.97)	2.56 (65.02)	.75 (19.05)	.91 (23.11)	.375 (9.53)	.455 (11.56)	3	1.5 lbs.
045	4.23 (107.44)	4.35 (110.49)	3.26 (82.80)	3.32 (84.32)	1.27 (32.25)	1.33 (33.78)	2.44 (61.97)	2.56 (65.02)	.75 (19.05)	.91 (23.11)	.375 (9.53)	.455 (11.56)	3	1.5 lbs.
046	5.74 (145.80)	7.00 (177.80)	3.16 (80.26)	3.22 (81.79)	---	---	3.35 (85.09)	3.41 (86.61)	.73 (18.54)	.79 (20.07)	.365 (9.27)	.395 (10.03)	7	12 oz.
047	5.74 (145.80)	7.00 (177.80)	3.16 (80.26)	3.22 (81.79)	---	---	3.35 (85.09)	3.41 (86.61)	.73 (18.54)	.79 (20.07)	.365 (9.27)	.395 (10.03)	7	12 oz.
048	5.74 (145.80)	6.20 (157.48)	1.185 (30.10)	2.015 (51.18)	---	---	1.93 (49.02)	1.99 (50.55)	.50 (12.70)	.56 (14.22)	.25 (6.35)	.28 (7.11)	8	3.4 oz.

See footnotes at end of table.

TABLE I. Physical characteristics - Continued.

Dash number	Dimensions <u>1/</u> <u>2/</u> <u>3/</u>													
	G <u>4/</u>		H <u>4/</u>		K		L		M		N		P	
	Min	Max	Min	Max	Min	Max	Min	Max	Min	Max	Min	Max	Min	Max
041	.67 (17.02)	.71 (18.03)	.48 (12.19)	.54 (13.72)	1.47 (37.34)	1.53 (38.86)	.16 (4.06)	.22 (5.59)	.72 (18.29)	.78 (11.94)	---	---	---	---
042	.67 (17.02)	.71 (18.03)	.48 (12.19)	.54 (13.72)	1.47 (37.34)	1.53 (38.86)	.16 (4.06)	.22 (5.59)	.72 (18.29)	.78 (11.94)	---	---	---	---
043	.85 (21.59)	.91 (23.11)	.47 (11.94)	.53 (13.46)	1.47 (37.34)	1.53 (38.86)	.16 (4.06)	.22 (5.59)	.72 (18.29)	.78 (11.94)	---	---	---	---
044	.85 (21.59)	.91 (23.11)	.47 (11.94)	.53 (13.46)	.15 (3.81)	.21 (5.33)	.32 (8.13)	.38 (9.65)	.47 (11.94)	.53 (13.46)	---	---	---	---
045	.85 (21.59)	.91 (23.11)	.47 (11.94)	.53 (13.46)	.15 (3.81)	.21 (5.33)	.32 (8.13)	.38 (9.65)	.47 (11.94)	.53 (13.46)	---	---	---	---
046	.76 (19.30)	.83 (21.08)	.35 (8.89)	.41 (10.41)	.44 (11.18)	.50 (12.70)	.16 (4.06)	.22 (5.59)	1.56 (39.62)	1.62 (41.15)	---	---	---	---
047	.76 (19.30)	.83 (21.08)	.35 (8.89)	.41 (10.41)	.44 (11.18)	.50 (12.70)	.16 (4.06)	.22 (5.59)	1.56 (39.62)	1.62 (41.15)	---	---	---	---
048	.41 (10.41)	.47 (11.94)	.24 (6.10)	.30 (7.62)	.72 (18.29)	.78 (19.81)	.34 (8.64)	.40 (10.16)	1.20 (30.48)	1.26 (32.00)	2.949 (74.90)	2.984 (75.79)	---	---

1/ Dimensions are in inches.

2/ Metric equivalents are given for general information only.

3/ Metric equivalents are in parentheses.

4/ These dimensional values are for reference purposes only.

TABLE II. Electrical characteristics.

Dash number	Frequency range GHz	Coupling (dB)		Coupling variation (dB) max	Effective directivity (dB) min	Insertion loss (dB) max	VSWR max		RF input power to primary			Secondary N connector		Secondary line
		Nominal	Tolerance				Primary line	Secondary line	Over frequency range Watts	Avg Watts	Peak KW	Primary line		
												Input	Output	
001	0.225 - 0.460	10	±1.0	±1.0	30	0.2	1.15:1	1.25:1	200	200	10	Female	Female	Female
002	0.950 - 2.0	10	±1.0	±1.0	30	0.2	1.15:1	1.15:1	200	200	10	Female	Female	Female
003	2 - 4	10	±0.1	±1.0	25	0.2	1.15:1	1.20:1	200	200	10	Female	Female	Female
004	4 - 10	10	±1.5	±1.2	17	0.2	1.20:1	1.30:1	200	200	10	Female	Female	Female
005	.216 - .450	20	±0.5	±0.5	30	0.15	1.10:1	1.20:1	50	50	10	Female	Male	Two Female
006	.225 - .460	20	±1.0	±1.0	30	0.2	1.15:1	1.25:1	100	100	10	Female	Female	Female
007	.940 - 1.975	20	±1.0	±0.5	25	0.35	1.20:1	1.30:1	50	50	10	Female	Female	Two Female
008	.950 - 2.0	20	±1.0	±1.0	30	0.2	1.15:1	1.15:1	500	500	10	Female	Female	Female
009	1.9 - 4.0	20	±1.0	±0.5	25	0.35	1.25:1	1.35:1	50	50	10	Female	Male	Two Female
010	4 - 10	20	±1.5	±1.2	17	0.2	1.20:1	1.30:1	500	500	10	Female	Female	Female
011	.225 - .460	30	±1.0	±1.0	30	0.2	1.15:1	1.15:1	500	1000	10	Female	Female	Female
012	.950 - 2.0	30	±1.0	±1.0	30	0.2	1.15:1	1.25:1	500	1000	10	Female	Female	Female
013	2 - 4	30	±2.0	±1.0	25	0.2	1.15:1	1.25:1	500	1000	10	Female	Female	Female
014	4 - 10	30	±1.5	±1.2	17	0.2	1.20:1	1.30:1	500	500	10	Female	Female	Female
015	.030 - .960	<u>1</u> /	<u>1</u> /	6 dB/octave	30	---	1.15:1	1.25:1	1000	1000	10	Female	Male	Two Female
016	.1 - 1.2	<u>2</u> /	<u>2</u> /	6 dB/octave	30	---	1.15:1	1.25:1	1000	1000	10	Female	Male	Two Female
017	.46 - .95	10	±2.0	±1.0	30	0.2	1.15:1	1.25:1	200	200	10	Female	Female	Female
018	.46 - .95	20	±2.0	±1.0	30	0.2	1.15:1	1.25:1	500	500	10	Female	Female	Female
019	.24 - .50	10	±0.5	±0.3	20	0.2	1.10:1	1.20:1	200	200	10	Female	Female	Female
020	.24 - .50	20	±0.5	±0.3	20	0.2	1.10:1	1.20:1	500	500	10	Female	Female	Female
021	.24 - .50	30	±0.5	±0.3	20	0.2	1.10:1	1.20:1	500	500	10	Female	Female	Female
022	.50 - 1.0	10	±0.5	±0.3	20	0.2	1.10:1	1.20:1	200	200	10	Female	Female	Female
023	.50 - 1.0	20	±0.5	±0.3	20	0.2	1.10:1	1.20:1	500	500	10	Female	Female	Female
024	.50 - 1.0	30	±0.5	±0.3	20	0.2	1.10:1	1.20:1	500	500	10	Female	Female	Female

See footnotes at end of table.

TABLE II. Electrical characteristics - Continued.

Dash number	Frequency range GHz	Coupling (dB)		Coupling variation (dB) max	Effective directivity (dB) min	Insertion loss (dB) max	VSWR max		RF input power to primary			Secondary N connector		Secondary line
		Nominal	Tolerance				Primary line	Secondary line	Over frequency range Watts	Avg Watts	Peak KW	Primary line		
												Input	Output	
025	.92 - 2.2	10	±0.5	±0.3	20	0.2	1.10:1	1.20:1	200	200	10	Female	Female	Female
026	.92 - 2.2	20	±0.5	±0.3	20	0.2	1.10:1	1.20:1	500	500	10	Female	Female	Female
027	.92 - 2.2	30	±0.5	±0.3	20	0.2	1.10:1	1.20:1	500	500	10	Female	Female	Female
028	1.7 - 4.2	10	±0.5	±0.3	20	0.2	1.15:1	1.20:1	200	200	10	Female	Female	Female
029	1.7 - 4.2	20	±0.5	±0.3	20	0.2	1.15:1	1.20:1	500	500	10	Female	Female	Female
030	1.7 - 4.2	30	±0.5	±0.3	20	0.2	1.15:1	1.20:1	500	500	10	Female	Female	Female
031	3.7 - 8.3	10	±0.5	±0.3	17	0.2	1.20:1	1.25:1	200	200	10	Female	Female	Female
032	3.7 - 8.3	20	±0.5	±0.3	17	0.2	1.20:1	1.25:1	500	500	10	Female	Female	Female
033	3.7 - 8.3	30	±0.5	±0.3	17	0.2	1.20:1	1.25:1	500	500	10	Female	Female	Female
034	7.0 - 12.4	10	±0.5	±0.3	15	0.3	1.25:1	1.30:1	100	100	2	Female	Female	Female
035	7.0 - 12.4	20	±0.5	±0.3	15	0.3	1.25:1	1.30:1	100	100	2	Female	Female	Female
036	7.0 - 12.4	30	±0.5	±0.3	15	0.3	1.25:1	1.30:1	100	100	2	Female	Female	Female
037	.125 - .250	20	±0.5	±0.3	20	0.2	1.10:1	1.20:1	500	500	2	Female	Female	Female
038	1.0 - 12.4	10	±1.5	±1.0	12	0.7	1.35:1	1.50:1	20	20	3	Female	Female	Female
039	1.0 - 12.4	20	±1.5	±1.0	15	1.0	1.35:1	1.50:1	20	20	3	Female	Female	Female
040	3.7 - 8.3	10	±0.3	±0.3	20	0.8	1.20:1	1.20:1	10	10	2	Male	Female	Female
041	.46 - .95	30	±2.0	±1.0	30	0.2	1.15:1	1.15:1	500	500	10	Female	Female	Female
042	.46 - .95	40	±2.0	±1.0	30	0.2	1.15:1	1.15:1	500	500	10	Female	Female	Female
043	.95 - 2.0	6	±2.0	±1.0	30	0.2	1.15:1	1.15:1	200	200	10	Female	Female	Female
044	1.5 - 3.0	10	±1.0	±1.0	25	0.2	1.25:1	1.25:1	100	100	3	Female	Female	Female
045	1.5 - 3.0	20	±1.0	±1.0	25	0.2	1.25:1	1.25:1	100	100	3	Female	Female	Female
046	1.0 - 18	13	±1.5	±1.5	25	0.3	1.35:1	1.40:1	200	200	3	Male	Female	Female
047	1.0 - 18	13	±1.5	±1.5	25	0.3	1.35:1	1.40:1	200	200	3	Female	Male	Female
048	1.0 - 18	16	±0.5	±1.0	12	0.8	1.40:1	1.50:1	20	20	3	Female	Female	Female

1/ 60 dB ±1 dB at 30 MHz; 54 dB ±1dB at 60 MHz; 48 dB ±1 dB at 120 MHz; 42 dB ±1 dB at 240 MHz; 36 dB ±1 dB at 480 MHz; and 30 dB ±1 dB at 960 MHz.

2/ 62 dB ±1 dB at 100 MHz; 56 dB ± at 200 MHz; 50 dB ±1 dB at 400 MHz; 44 dB ±1 dB at 800 MHz; and 42 dB ±1 dB at 1200 MHz.

MIL-DTL-15370/3F

TABLE III. Cross-reference of part number/AN nomenclature.

Dash number	AN nomenclature
001	CU-1525/U
002	CU-1528/U
003	CU-1531/U
004	CU-1533/U
005	CU-1516/U
006	CU-1526/U
007	CU-1517/U
008	CU-1529/U
009	CU-1518/U
010	CU-1534/U
011	CU-1527/U
012	CU-1530/U
013	CU-1532/U
014	CU-1535/U
015	CU-1521/U
016	CU-1520/U

Referenced Documents: In addition to MIL-DTL-15370, this document references the following:
MIL-PRF-39012

The margins of this specification are marked with vertical lines to indicate where modifications from this revision were made. This was done as a convenience only and the Government assumes no liability whatsoever for any inaccuracies in these notations. Bidders and contractors are cautioned to evaluate the requirements of this document based on the entire content irrespective of the marginal notations.

Custodians:
Army - CR
Navy - EC
Air Force - 85
DLA - CC

Preparing activity:
DLA - CC
(Project 5985-2012-033)

Review activities:
Army - MI
Navy - AS, CG, MC, OS, SH
Air Force - 99

NOTE: The activities listed above were interested in this document as of the date of this document. Since organizations and responsibilities can change, you should verify the currency of the information above using the ASSIST Online database at <https://assist.dla.mil/>.