

INCH-POUND

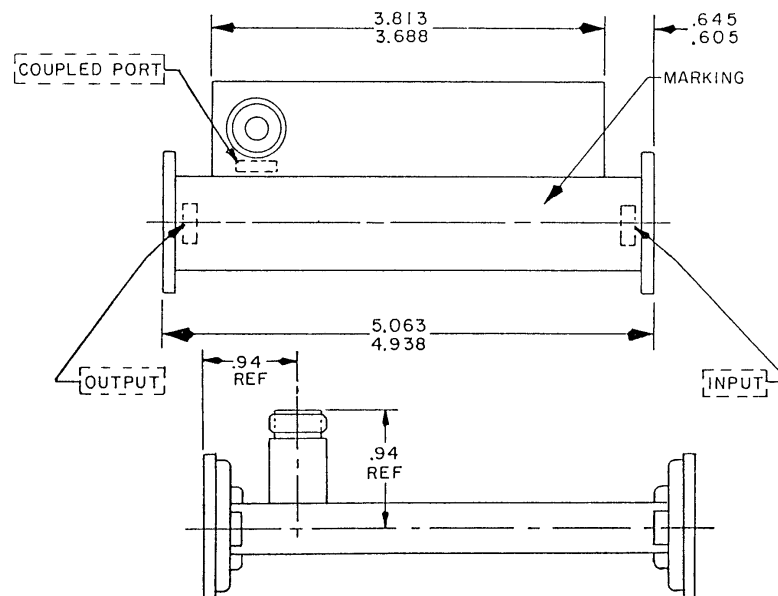
MIL-DTL-15370/6E  
 7 May 2008  
 SUPERSEDING  
 MIL-DTL-15370/6D  
 20 June 2003

## DETAIL SPECIFICATION SHEET

## COUPLERS, DIRECTIONAL (WAVEGUIDE, COAXIAL OUTPUT)

This specification is approved for use by all Departments and Agencies of the Department of Defense.

The requirements for acquiring the couplers described herein shall consist of this specification sheet and MIL-DTL-15370.



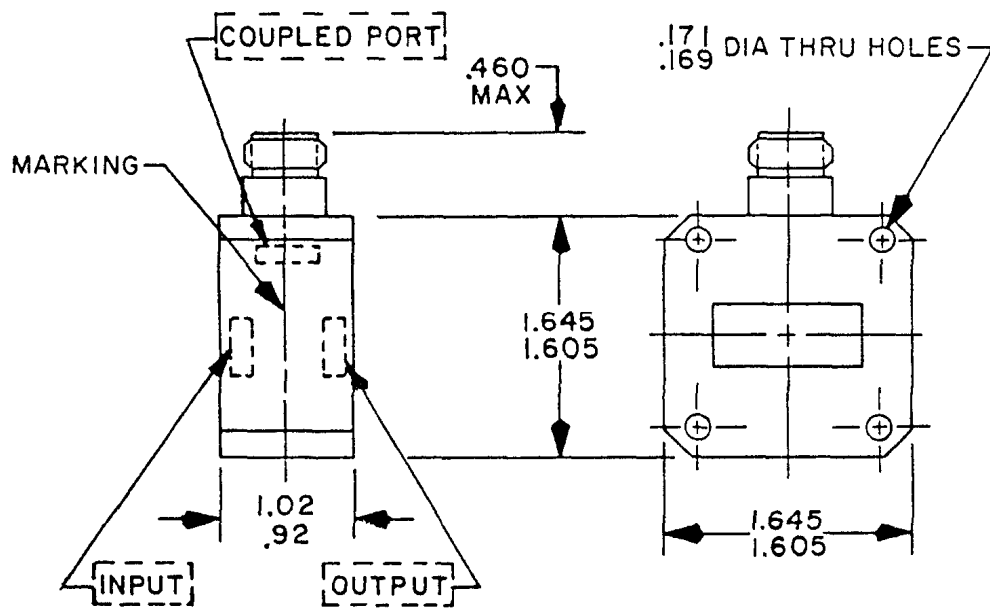
Inches	mm
.605	15.37
.645	16.38
.94	23.9
3.688	93.68
3.813	96.85
4.938	120.35
5.063	128.60

## NOTES:

1. Dimensions are in inches.
2. Metric equivalents are given for information only.

FIGURE 1. Dimensions and configuration for part number M15370/6-001.

MIL-DTL-15370/6E



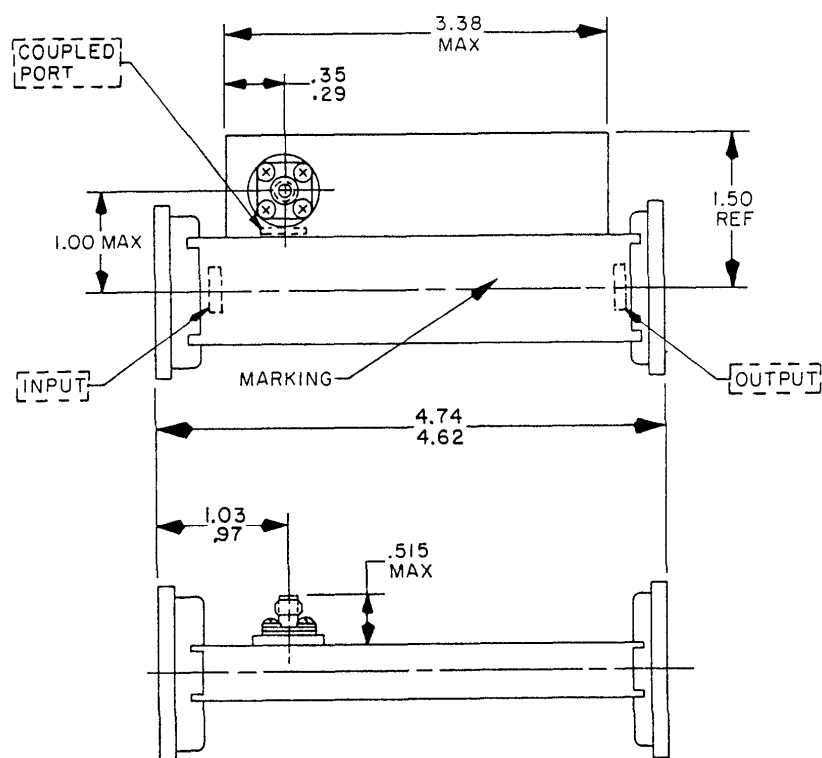
Inches	mm
.169	4.29
.171	4.34
.460	11.68
.92	23.4
1.02	25.9
1.605	40.77
1.645	41.78

## NOTES:

1. Dimensions are in inches.
2. Metric equivalents are given for information only.

FIGURE 2. Dimensions and configuration for part number M15370/6-002.

## MIL-DTL-15370/6E



Inches	mm
.29	7.4
.35	8.9
.515	13.08
.97	24.6
1.00	25.4
1.03	26.2
1.50	38.1
3.38	85.9
4.62	117.3
4.74	120.4

## NOTES:

1. Dimensions are in inches.
2. Metric equivalents are given for information only.

FIGURE 3. Dimensions and configuration for part number M15370/6-003.

TABLE I. Electrical characteristics.

Dash number	Frequency range <u>GHz</u>	Coupling (dB)		Coupling variation (dB) max	Effective directivity (dB) min	VSWR (max)		Power dissipation of internal load (avg) <u>Watts</u>	Flanges per MIL-DTL-3922		Connector: Female to mate with male conforming in and to MIL-PRF-39012
		Nominal	Tolerance			Primary line	Secondary line		Input	Output	
001N S	8.5-9.6	20	±1.0	±0.5	15	1.20:1	1.30:1	1	M3922/53-003	M3922/59-008	Series N
002N S	8.2-12.4	40	±1.0	±0.4	20	1.10:1	2.0:1	.125	M3922/53-003	M3922/53-003	SMA type
003N S	9.0-9.2	40	±1.0	±0.5	15	1.05:1	1.15:1	.5	M3922/59-008	M3922/53-003	SMA type

MIL-DTL-15370/6E

MIL-DTL-15370/6E

REQUIREMENTS:

Design, construction and physical dimensions: See figures 1 through 3 and table I.

Electrical: See table I.

Connectors: See table I.

Flanges: See table II.

Temperature range:

Operating: -65°C to +95°C for dash numbers 001 and 002.  
-29°C to +70°C for dash numbers 003.

Non-operating: -65°C to +95°C for dash numbers 001 and 002.  
-65°C to +71°C for dash number 003.

Shock: Not applicable.

Marking: See figures 1 through 3.

Part number: M15370/6- (and a dash number from table I).

Cross-reference data: P/N M15370/6-002: Type CG-176/AP.

MIL-DTL-15370/6E

Referenced Documents: In addition to MIL-DTL-15370, this document references the following:

MIL-DTL-3922

MIL-PRF-39012

Marginal notations are not used in this revision to identify changes with respect to the previous issue due to the extent of the changes.

Custodians:

Army - CR

Navy - EC

Air Force - 11

DLA - CC

Preparing activity:

DLA - CC

Review activities:

Army - MI

Navy - AS, CG, MC, OS, SH

Air Force - 99

(Project 5985-2008-030)

NOTE: The activities listed above were interested in this document as of the date of this document. Since organizations and responsibilities can change, you should verify the currency of the information above using the ASSIST Online database at <http://assist.daps.dla.mil/>.