

INCH-POUND

MIL-DTL-15370/3E
 7 May 2008
 SUPERSEDING
 MIL-DTL-15370/3D
 20 June 2003

DETAIL SPECIFICATION SHEET

COUPLERS, DIRECTIONAL (COAXIAL, SERIES N CONNECTORS)

This specification is approved for use by all Departments and Agencies of the Department of Defense.

The requirements for acquiring the couplers described herein shall consist of this specification sheet and MIL-DTL-15370.

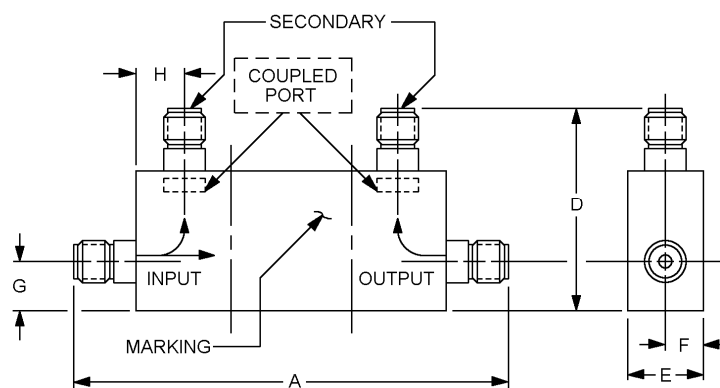


FIGURE 1. Dimensions and configuration for part numbers M15370/3-007, M15370/3-009, M15370/3-015, and M15370/3-016.

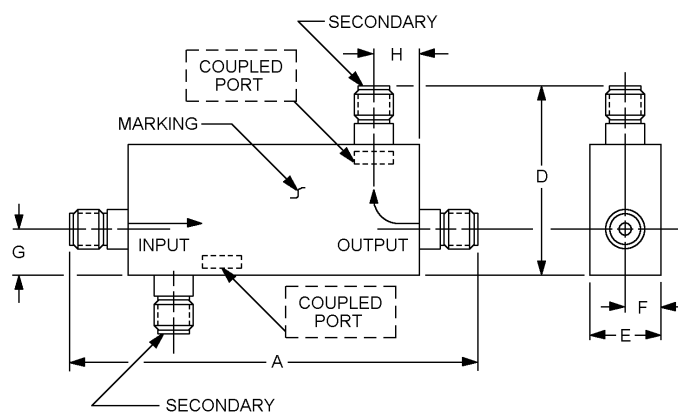


FIGURE 2. Dimensions and configuration for part number: M15370/3-005.

MIL-DTL-15370/3E

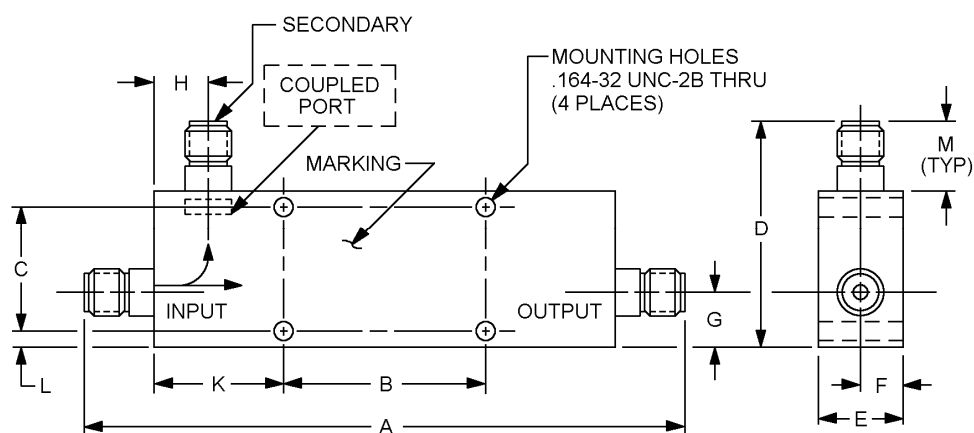


FIGURE 3. Dimensions and configuration for part numbers M15370/3-001 through M15370/3-006, M15370/3-008, M15370/3-010 through M15370/3-014, M15370/3-017 through M15370/3-033, M15370/3-041 through M15370/3-045.

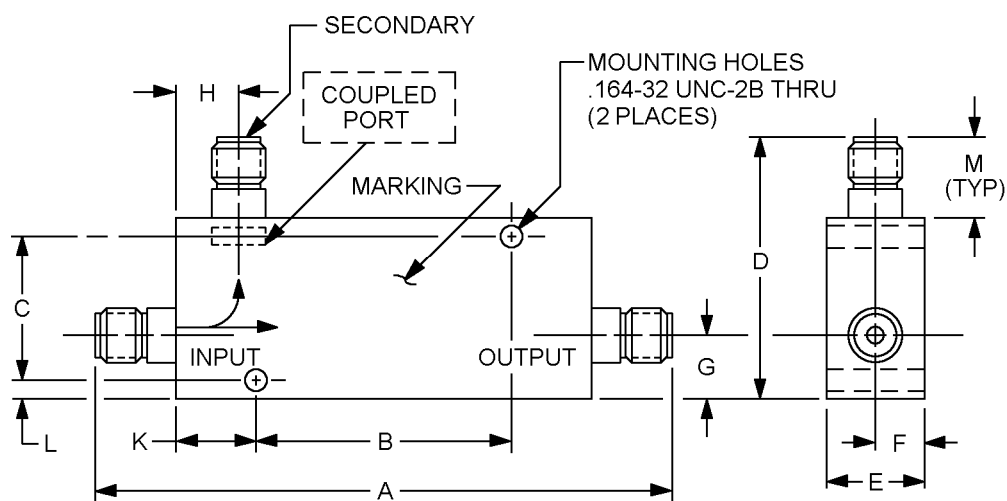


FIGURE 4. Dimensions and configuration for part numbers M15370/3-034 through M15370/3-036.

MIL-DTL-15370/3E

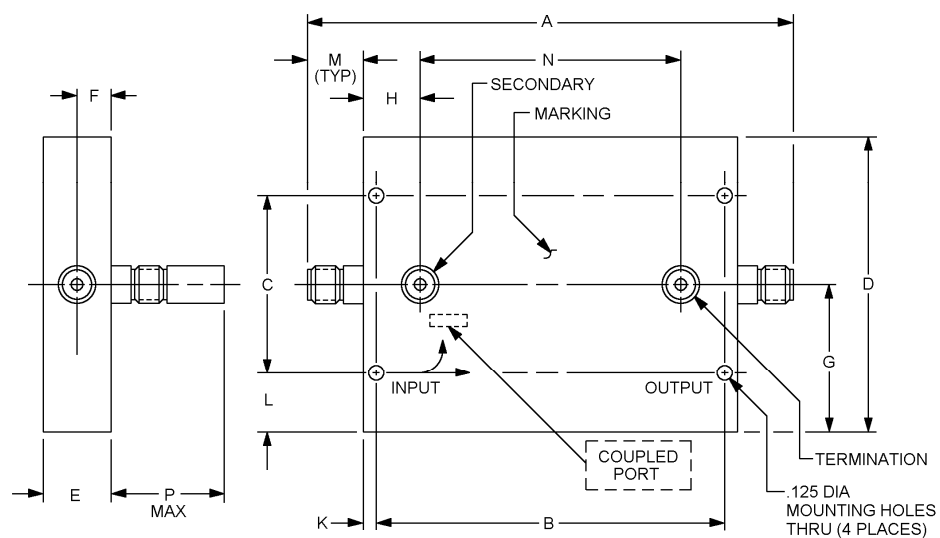
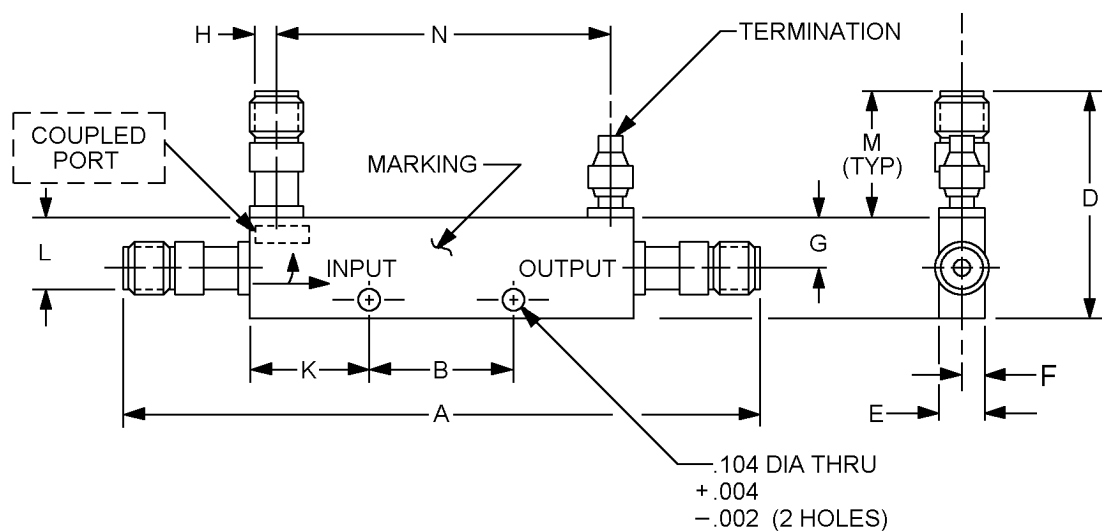


FIGURE 5. Dimensions and configuration for part number M15370/3-037.



Inches	mm
.002	0.05
.004	0.10
.104	2.64

FIGURE 6. Dimensions and configuration for part numbers M15370/3-038 through M15370/3-040.

MIL-DTL-15370/3E

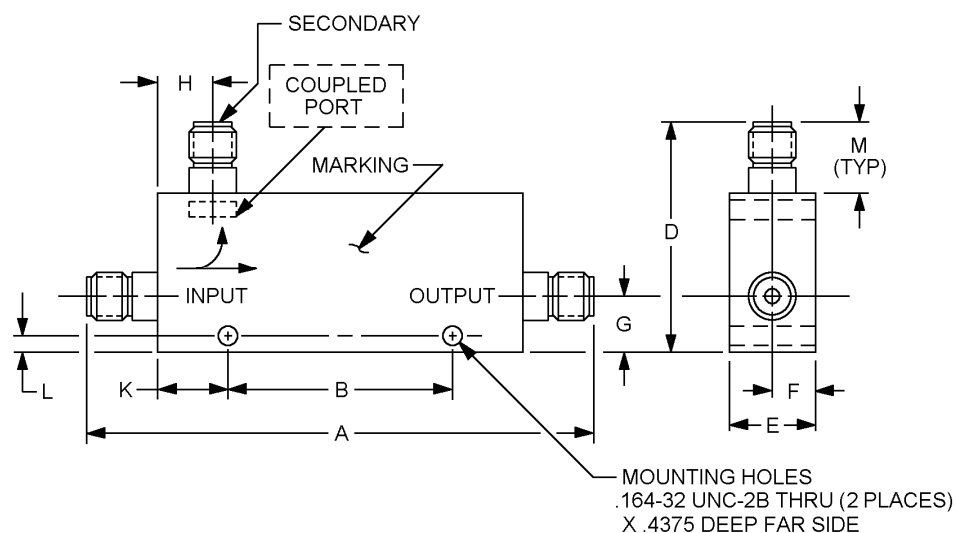


FIGURE 7. Dimensions and configuration for part numbers M15370/3-046 and M15370/3-047.

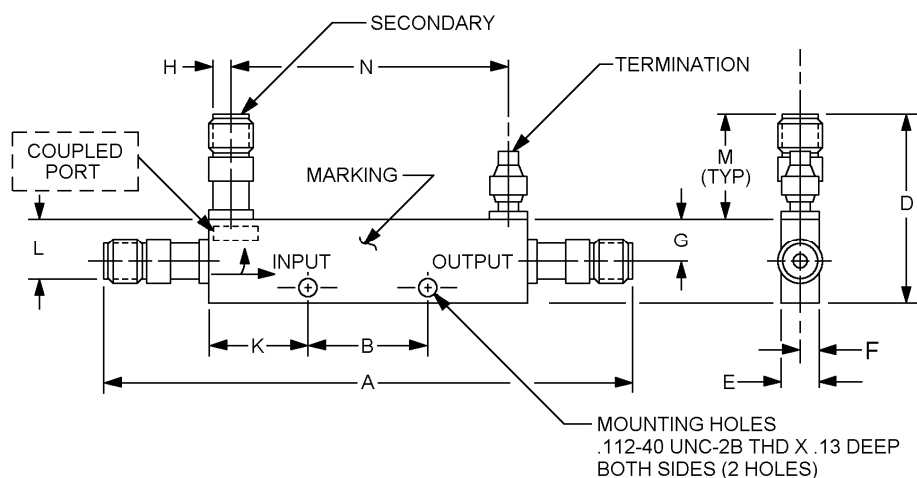


FIGURE 8. Dimensions and configuration for part number M15370/3-048.

Inches	mm
.002	0.05
.004	0.10
.104	2.64

MIL-DTL-15370/3E

REQUIREMENTS:

Design, construction and physical dimensions: See figures 1 through 8 and table I.

Connectors: Type N in accordance with MIL-PRF-39012 and table II herein.

Weight: See table I.

Temperature range: -54°C to +105°C.

Frequency range: See table II.

Coupling: See table II.

Coupling tolerance: See table II.

Coupling variation: See table II.

Effective directivity: See table II.

Insertion loss: See table II.

VSWR: See table II.

Power: See table II.

Marking: See figures 1 through 8.

Cross-reference data: See table III.

Part number: M15370/3- (and a dash number from table I).

TABLE I. Physical characteristics.

Dash number	Dimensions 1/ 2/ 3/												Figure number	Weight (max)
	A		B		C		D		E		F 4/			
	Min	Max	Min	Max	Min	Max	Min	Max	Min	Max	Min	Max		
001N S	12.125 (307.98)	12.250 (311.15)	2.938 (74.62)	3.063 (77.80)	1.625 (41.27)	1.750 (44.45)	2.814 (71.47)	2.938 (74.62)	.814 (20.68)	.938 (23.83)	.407 (10.34)	.469 (11.91)	3	2.2 lbs.
002N S	5.563 (141.30)	5.688 (144.48)	1.027 (26.09)	1.153 (29.29)	1.625 (41.27)	1.750 (44.45)	2.814 (71.47)	2.938 (74.62)	.814 (20.68)	.938 (23.83)	.407 (10.34)	.469 (11.91)	3	1.1 lbs.
003N S	5.563 (141.30)	5.688 (144.48)	1.027 (26.09)	1.153 (29.29)	1.625 (41.27)	1.750 (44.45)	2.814 (71.47)	2.938 (74.62)	.814 (20.68)	.938 (23.83)	.407 (10.34)	.469 (11.91)	3	1.1 lbs.
004N S	6.437 (163.50)	6.563 (166.70)	1.938 (49.23)	2.063 (52.40)	1.625 (41.27)	1.750 (44.45)	2.814 (71.47)	2.938 (74.62)	.814 (20.68)	.938 (23.83)	.407 (10.34)	.469 (11.91)	3	1.1 lbs.
005N S	8.938 (227.03)	9.063 (230.20)	---	---	---	---	2.938 (74.63)	3.063 (77.80)	1.814 (46.08)	1.938 (49.23)	.907 (23.04)	.969 (24.61)	2	3.0 lbs.
006N S	12.125 (307.98)	12.250 (311.15)	2.938 (74.62)	3.063 (77.80)	1.625 (41.27)	1.750 (44.45)	2.814 (71.47)	2.938 (74.62)	.814 (20.68)	.938 (23.83)	.407 (10.34)	.469 (11.91)	3	2.2 lbs.
007N S	9.000 (228.60)	9.125 (231.78)	---	---	---	---	2.437 (61.90)	2.563 (65.10)	1.814 (46.08)	1.938 (49.23)	.907 (23.04)	.969 (24.61)	1	2.0 lbs
008N S	5.563 (141.30)	5.688 (144.48)	1.027 (26.09)	1.153 (29.29)	1.625 (41.27)	1.750 (44.45)	2.814 (71.47)	2.938 (74.62)	.814 (20.68)	.938 (23.83)	.407 (10.34)	.469 (11.91)	3	1.1 lbs.
009N S	8.938 (227.03)	9.063 (230.20)	---	---	---	---	2.437 (61.90)	2.563 (65.10)	1.814 (46.08)	1.938 (49.23)	.907 (23.04)	.969 (24.61)	1	1.7 lbs.
010N S	6.437 (163.50)	6.563 (166.70)	1.938 (49.23)	2.063 (52.40)	1.625 (41.27)	1.750 (44.45)	2.814 (71.47)	2.938 (74.62)	.814 (20.68)	.938 (23.83)	.407 (10.34)	.469 (11.91)	3	1.1 lbs.
011N S	12.188 (309.58)	12.313 (312.75)	2.938 (74.62)	3.063 (77.80)	1.625 (41.27)	1.750 (44.45)	2.814 (71.47)	2.938 (74.62)	.814 (20.68)	.938 (23.83)	.407 (10.34)	.469 (11.91)	3	2.2 lbs.
012N S	5.563 (141.30)	5.688 (144.48)	1.027 (26.09)	1.153 (29.29)	1.625 (41.27)	1.750 (44.45)	2.814 (71.47)	2.938 (74.62)	.814 (20.68)	.938 (23.83)	.407 (10.34)	.469 (11.91)	3	1.1 lbs.
013N S	5.563 (141.30)	5.688 (144.48)	1.027 (26.09)	1.153 (29.29)	1.625 (41.27)	1.750 (44.45)	2.814 (71.47)	2.938 (74.62)	.814 (20.68)	.938 (23.83)	.407 (10.34)	.469 (11.91)	3	1.1 lbs.
014N S	6.437 (163.50)	6.563 (166.70)	1.938 (49.23)	2.063 (52.40)	1.625 (41.27)	1.750 (44.45)	2.814 (71.47)	2.938 (74.62)	.814 (20.68)	.938 (23.83)	.407 (10.34)	.469 (11.91)	3	1.1 lbs.
015N S	5.063 (128.60)	5.188 (131.78)	---	---	---	---	3.125 (79.38)	3.250 (82.55)	1.063 (27.00)	1.188 (30.18)	.531 (13.50)	.594 (15.09)	1	1.1 lbs.
016N S	5.063 (128.60)	5.188 (131.78)	---	---	---	---	3.125 (79.38)	3.250 (82.55)	1.188 (30.18)	1.313 (33.35)	.594 (15.09)	.656 (16.67)	1	1.1 lbs.
017N S	7.45 (189.23)	8.05 (204.47)	2.97 (75.44)	3.03 (76.96)	1.673 (42.49)	1.693 (43.00)	2.85 (72.39)	2.91 (73.91)	.85 (21.59)	.91 (23.11)	.425 (10.80)	.455 (11.56)	3	1.6 lbs.
018N S	7.45 (189.23)	8.05 (204.47)	2.97 (75.44)	3.03 (76.96)	1.673 (42.49)	1.693 (43.00)	2.85 (72.39)	2.91 (73.91)	.85 (21.59)	.91 (23.11)	.425 (10.80)	.455 (11.56)	3	1.6 lbs.
019N S	13.67 (347.22)	13.73 (348.74)	2.97 (75.44)	3.03 (76.96)	1.673 (42.49)	1.703 (43.26)	2.85 (72.39)	2.91 (73.91)	.85 (21.59)	.91 (23.11)	.425 (10.80)	.455 (11.56)	3	2.1 lbs.
020N S	13.55 (344.17)	13.61 (345.69)	2.97 (75.44)	3.03 (76.96)	1.673 (42.49)	1.703 (43.26)	2.85 (72.39)	2.91 (73.91)	.85 (21.59)	.91 (23.11)	.425 (10.80)	.455 (11.56)	3	2.1 lbs.
021N S	13.55 (344.17)	13.61 (345.69)	2.97 (75.44)	3.03 (76.96)	1.797 (45.64)	1.827 (46.41)	2.97 (75.44)	3.03 (76.96)	.85 (21.59)	.91 (23.11)	.425 (10.80)	.455 (11.56)	3	2.1 lbs.

See footnotes at end of table.

MIL-DTL-15370/3E

TABLE I. Physical characteristics - Continued.

Dash number	Dimensions <u>1/</u> <u>2/</u> <u>3/</u>													
	G 4/		H 4/		K		L		M		N		P	
	Min	Max	Min	Max	Min	Max	Min	Max	Min	Max	Min	Max	Min	Max
001N	.85	.91	.47	.53	1.47	1.53	.16	.22	.72	.78	---	---	---	---
S	(21.59)	(23.11)	(11.94)	(13.46)	(37.34)	(38.86)	(4.06)	(5.59)	(18.29)	(19.81)				
002N	.85	.91	.47	.53	1.47	1.53	.16	.22	.72	.78	---	---	---	---
S	(21.59)	(23.11)	(11.94)	(13.46)	(37.34)	(38.86)	(4.06)	(5.59)	(18.29)	(19.81)				
003N	.85	.91	.47	.53	1.47	1.53	.16	.22	.72	.78	---	---	---	---
S	(21.59)	(23.11)	(11.94)	(13.46)	(37.34)	(38.86)	(4.06)	(5.59)	(18.29)	(19.81)				
004N	.53	.59	.63	.69	1.47	1.53	.16	.22	.72	.78	---	---	---	---
S	(13.46)	(14.99)	(16.00)	(17.53)	(37.34)	(38.86)	(4.06)	(5.59)	(18.29)	(19.81)				
005N	1.00	1.06	.66	.72	---	---	---	---	---	---	---	---	---	---
S	(25.40)	(26.92)	(16.76)	(18.29)										
006N	.85	.91	.47	.53	1.47	1.53	.16	.22	.72	.78	---	---	---	---
S	(21.59)	(23.11)	(11.94)	(13.46)	(37.34)	(38.86)	(4.06)	(5.59)	(18.29)	(19.81)				
007N	.58	.64	1.57	1.63	---	---	---	---	---	---	---	---	---	---
S	(14.73)	(16.26)	(39.88)	(41.40)										
008N	.85	.91	.47	.53	1.47	1.53	.16	.22	.72	.78	---	---	---	---
S	(21.59)	(23.11)	(11.94)	(13.46)	(37.34)	(38.86)	(4.06)	(5.59)	(18.29)	(19.81)				
009N	.58	.64	1.57	1.63	---	---	---	---	---	---	---	---	---	---
S	(14.73)	(16.26)	(39.88)	(41.40)										
010N	.66	.72	.53	.59	1.47	1.53	.16	.22	.72	.78	---	---	---	---
S	(16.76)	(18.29)	(13.46)	(14.99)	(37.34)	(38.86)	(4.06)	(5.59)	(18.29)	(19.81)				
011N	.66	.72	.47	.53	1.47	1.53	.16	.22	.72	.78	---	---	---	---
S	(16.76)	(18.29)	(11.94)	(13.46)	(37.34)	(38.86)	(4.06)	(5.59)	(18.29)	(19.81)				
012N	.66	.72	.47	.53	1.47	1.53	.16	.22	.72	.78	---	---	---	---
S	(16.76)	(18.29)	(11.94)	(13.46)	(37.34)	(38.86)	(4.06)	(5.59)	(18.29)	(19.81)				
013N	.66	.72	.47	.53	1.47	1.53	.16	.22	.72	.78	---	---	---	---
S	(16.76)	(18.29)	(11.94)	(13.46)	(37.34)	(38.86)	(4.06)	(5.59)	(18.29)	(19.81)				
014N	.66	.72	.53	.59	1.47	1.53	.16	.22	.72	.78	---	---	---	---
S	(16.76)	(18.29)	(13.46)	(14.99)	(37.34)	(38.86)	(4.06)	(5.59)	(18.29)	(19.81)				
015N	.75	.81	.87	.93	---	---	---	---	---	---	---	---	---	---
S	(19.05)	(20.57)	(22.10)	(23.62)										
016N	.75	.81	.87	.93	---	---	---	---	---	---	---	---	---	---
S	(19.05)	(20.57)	(22.10)	(23.62)										
017N	.85	.91	.47	.53	1.47	1.53	.16	.22	.72	.78	---	---	---	---
S	(21.59)	(23.11)	(11.94)	(13.46)	(37.34)	(38.86)	(4.06)	(5.59)	(18.29)	(19.81)				
018N	.85	.91	.47	.53	1.47	1.53	.16	.22	.72	.78	---	---	---	---
S	(21.59)	(23.11)	(11.94)	(13.46)	(37.34)	(38.86)	(4.06)	(5.59)	(18.29)	(19.81)				
019N	.80	.86	.47	.53	1.47	1.53	.16	.22	.72	.78	---	---	---	---
S	(20.32)	(21.84)	(11.94)	(13.46)	(37.34)	(38.86)	(4.06)	(5.59)	(18.29)	(19.81)				
020N	.66	.72	.47	.53	1.47	1.53	.16	.22	.72	.78	---	---	---	---
S	(16.76)	(18.29)	(11.94)	(13.46)	(37.34)	(38.86)	(4.06)	(5.59)	(18.29)	(19.81)				
021N	.64	.70	.47	.53	1.47	1.53	.16	.22	.72	.78	---	---	---	---
S	(16.26)	(17.78)	(11.94)	(13.46)	(37.34)	(38.86)	(4.06)	(5.59)	(18.29)	(19.81)				

See footnotes at end of table.

MIL-DTL-15370/3E

TABLE I. Physical characteristics - Continued.

Dash number	Dimensions 1/ 2/ 3/												Figure number	Weight (max)
	A		B		C		D		E		F 4/			
	Min	Max	Min	Max	Min	Max	Min	Max	Min	Max	Min	Max	Min	Max
022N	11.55	11.61	2.97	3.03	1.673	1.703	2.85	2.91	.85	.91	.425	.455	3	2.1
S	(293.37)	(294.89)	(75.44)	(76.96)	(42.49)	(43.26)	(72.39)	(73.91)	(21.59)	(23.11)	(10.80)	(11.56)		lbs.
023N	11.55	11.61	2.97	3.03	1.673	1.703	2.85	2.91	.85	.91	.425	.455	3	2.1
S	(293.37)	(294.89)	(75.44)	(76.96)	(42.49)	(43.26)	(72.39)	(73.91)	(21.59)	(23.11)	(10.80)	(11.56)		lbs.
024N	11.55	11.61	2.97	3.03	1.673	1.703	2.85	2.91	.85	.91	.425	.455	3	2.1
S	(293.37)	(294.89)	(75.44)	(76.96)	(42.49)	(43.26)	(72.39)	(73.91)	(21.59)	(23.11)	(10.80)	(11.56)		lbs.
025N	7.60	7.66	2.97	3.03	1.673	1.703	2.85	2.91	.85	.91	.425	.455	3	1.3
S	(193.04)	(194.56)	(75.44)	(76.96)	(42.49)	(43.26)	(72.39)	(73.91)	(21.59)	(23.11)	(10.80)	(11.56)		lbs.
026N	7.60	7.66	2.97	3.03	1.673	1.703	2.85	2.91	.85	.91	.425	.455	3	1.3
S	(193.04)	(194.56)	(75.44)	(76.96)	(42.49)	(43.26)	(72.39)	(73.91)	(21.59)	(23.11)	(10.80)	(11.56)		lbs.
027N	7.60	7.66	2.97	3.03	1.673	1.703	2.85	2.91	.85	.91	.425	.455	3	1.3
S	(193.04)	(194.56)	(75.44)	(76.96)	(42.49)	(43.26)	(72.39)	(73.91)	(21.59)	(23.11)	(10.80)	(11.56)		lbs.
028N	5.56	5.62	1.06	1.12	1.673	1.703	2.85	2.91	.85	.91	.425	.455	3	1.1
S	(141.22)	(142.75)	(26.92)	(28.45)	(42.49)	(43.26)	(72.39)	(73.91)	(21.59)	(23.11)	(10.80)	(11.56)		lbs.
029N	5.56	5.62	1.06	1.12	1.673	1.703	2.85	2.91	.85	.91	.425	.455	3	1.1
S	(141.22)	(142.75)	(26.92)	(28.45)	(42.49)	(43.26)	(72.39)	(73.91)	(21.59)	(23.11)	(10.80)	(11.56)		lbs.
030N	5.56	5.62	1.06	1.12	1.673	1.703	2.85	2.91	.85	.91	.425	.455	3	1.1
S	(141.22)	(142.75)	(26.92)	(28.45)	(42.49)	(43.26)	(72.39)	(73.91)	(21.59)	(23.11)	(10.80)	(11.56)		lbs.
031N	7.47	7.53	2.97	3.03	1.673	1.703	2.85	2.91	.85	.91	.425	.455	3	1.6
S	(189.74)	(191.26)	(75.44)	(76.96)	(42.49)	(43.26)	(72.39)	(73.91)	(21.59)	(23.11)	(10.80)	(11.56)		lbs.
032N	7.47	7.53	2.97	3.03	1.673	1.703	2.85	2.91	.85	.91	.425	.455	3	1.6
S	(189.74)	(191.26)	(75.44)	(76.96)	(42.49)	(43.26)	(72.39)	(73.91)	(21.59)	(23.11)	(10.80)	(11.56)		lbs.
033N	7.47	7.53	2.97	3.03	1.673	1.703	2.85	2.91	.85	.91	.425	.455	3	1.6
S	(189.74)	(191.26)	(75.44)	(76.96)	(42.49)	(43.26)	(72.39)	(73.91)	(21.59)	(23.11)	(10.80)	(11.56)		lbs.
034N	3.97	4.03	1.110	1.140	1.079	1.109	2.19	2.25	.85	.91	.425	.455	4	0.8
S	(100.84)	(102.36)	(28.19)	(28.96)	(27.41)	(28.17)	(55.63)	(57.15)	(21.59)	(23.11)	(10.80)	(11.56)		lbs.
035N	3.97	4.03	1.110	1.140	1.079	1.109	2.19	2.25	.85	.91	.425	.455	4	0.8
S	(100.84)	(102.36)	(28.19)	(28.96)	(27.41)	(28.17)	(55.63)	(57.15)	(21.59)	(23.11)	(10.80)	(11.56)		lbs.
036N	3.97	4.03	1.110	1.140	1.079	1.109	2.19	2.25	.85	.91	.425	.455	4	0.8
S	(100.84)	(102.36)	(28.19)	(28.96)	(27.41)	(28.17)	(55.63)	(57.15)	(21.59)	(23.11)	(10.80)	(11.56)		lbs.
037N	8.04	8.10	6.219	6.249	2.985	3.015	5.09	5.15	.90	.92	.36	.38	5	2.2
S	(204.22)	(205.74)	(157.96)	(158.72)	(75.82)	(76.58)	(129.29)	(130.81)	(22.9)	(23.4)	(9.1)	(9.7)		lbs.
038N	5.38	5.44	.985	1.015	---	---	1.92	1.98	.50	.56	.25	.28	6	2.2
S	(136.65)	(138.18)	(25.02)	(25.78)			(48.77)	(50.29)	(12.70)	(14.22)	(6.35)	(7.11)		lbs.
039N	5.60	5.68	2.297	2.334	---	---	1.75	1.83	.50	.56	.25	.28	6	2.2
S	(142.24)	(144.3)	(58.34)	(59.28)			(44.45)	(46.5)	(12.70)	(14.22)	(6.35)	(7.11)		lbs.
040N	4.85	4.91	---	---	---	---	3.85	3.91	1.09	1.15	.55	.58	6	1.1
S	(123.19)	(124.71)					(97.79)	(99.31)	(27.69)	(29.21)	(13.97)	(14.73)		lbs.

See footnotes at end of table.

TABLE I. Physical characteristics - Continued.

Dash number	Dimensions <u>1/</u> <u>2/</u> <u>3/</u>													
	G <u>4/</u>		H <u>4/</u>		K		L		M		N		P	
	Min	Max	Min	Max	Min	Max	Min	Max	Min	Max	Min	Max	Min	Max
022N	.85	.91	.47	.53	1.47	1.53	.16	.22	.72	.78	---	---	---	---
S	(21.59)	(23.11)	(11.94)	(13.46)	(37.34)	(38.86)	(4.06)	(5.59)	(18.29)	(19.81)				
023N	.85	.91	.47	.53	1.47	1.53	.16	.22	.72	.78	---	---	---	---
S	(21.59)	(23.11)	(11.94)	(13.46)	(37.34)	(38.86)	(4.06)	(5.59)	(18.29)	(19.81)				
024N	.66	.72	.47	.53	1.47	1.53	.16	.22	.72	.78	---	---	---	---
S	(16.76)	(18.29)	(11.94)	(13.46)	(37.34)	(38.86)	(4.06)	(5.59)	(18.29)	(19.81)				
025N	.85	.91	.47	.53	1.47	1.53	.16	.22	.72	.78	---	---	---	---
S	(21.59)	(23.11)	(11.94)	(13.46)	(37.34)	(38.86)	(4.06)	(5.59)	(18.29)	(19.81)				
026N	.85	.91	.47	.53	1.47	1.53	.16	.22	.72	.78	---	---	---	---
S	(21.59)	(23.11)	(11.94)	(13.46)	(37.34)	(38.86)	(4.06)	(5.59)	(18.29)	(19.81)				
027N	.66	.72	.47	.53	1.47	1.53	.16	.22	.72	.78	---	---	---	---
S	(16.76)	(18.29)	(11.94)	(13.46)	(37.34)	(38.86)	(4.06)	(5.59)	(18.29)	(19.81)				
028N	.85	.91	.47	.53	1.47	1.53	.16	.22	.72	.78	---	---	---	---
S	(21.59)	(23.11)	(11.94)	(13.46)	(37.34)	(38.86)	(4.06)	(5.59)	(18.29)	(19.81)				
029N	.85	.91	.47	.53	1.47	1.53	.16	.22	.72	.78	---	---	---	---
S	(21.59)	(23.11)	(11.94)	(13.46)	(37.34)	(38.86)	(4.06)	(5.59)	(18.29)	(19.81)				
030N	.66	.72	.47	.53	1.47	1.53	.16	.22	.72	.78	---	---	---	---
S	(16.76)	(18.29)	(11.94)	(13.46)	(37.34)	(38.86)	(4.06)	(5.59)	(18.29)	(19.81)				
031N	.63	.69	.63	.69	1.47	1.53	.16	.22	.72	.78	---	---	---	---
S	(16.00)	(17.53)	(16.00)	(17.53)	(37.34)	(38.86)	(4.06)	(5.59)	(18.29)	(19.81)				
032N	.63	.69	.63	.69	1.47	1.53	.16	.22	.72	.78	---	---	---	---
S	(16.00)	(17.53)	(16.00)	(17.53)	(37.34)	(38.86)	(4.06)	(5.59)	(18.29)	(19.81)				
033N	.63	.69	.63	.69	1.47	1.53	.16	.22	.72	.78	---	---	---	---
S	(16.00)	(17.53)	(16.00)	(17.53)	(37.34)	(38.86)	(4.06)	(5.59)	(18.29)	(19.81)				
034N	.56	.62	.56	.62	.66	.72	.16	.22	.72	.78	---	---	---	---
S	(14.22)	(15.75)	(14.22)	(15.75)	(16.76)	(18.29)	(4.06)	(5.59)	(18.29)	(19.81)				
035N	.56	.62	.56	.62	.66	.72	.16	.22	.72	.78	---	---	---	---
S	(14.22)	(15.75)	(14.22)	(15.75)	(16.76)	(18.29)	(4.06)	(5.59)	(18.29)	(19.81)				
036N	.56	.62	.56	.62	.66	.72	.16	.22	.72	.78	---	---	---	---
S	(14.22)	(15.75)	(14.22)	(15.75)	(16.76)	(18.29)	(4.06)	(5.59)	(18.29)	(19.81)				
037N	2.50	2.56	.86	.92	.14	.20	1.00	1.06	.72	.78	4.64	4.70	---	2.00
S	(63.60)	(65.02)	(21.84)	(23.37)	(3.56)	(5.08)	(25.40)	(26.92)	(18.29)	(19.81)	(117.86)	(119.38)		(50.80)
038N	.44	.50	.22	.28	1.08	1.14	.67	.73	1.06	1.12	2.69	2.75	---	---
S	(11.18)	(12.70)	(5.59)	(7.11)	(27.43)	(28.96)	(17.02)	(18.54)	(26.92)	(28.45)	(68.33)	(69.85)		
039N	.39	.45	.22	.28	.53	.59	.56	.62	1.06	1.12	2.91	2.97	---	---
S	(9.91)	(11.43)	(5.59)	(7.11)	(13.46)	(14.99)	(14.22)	(15.75)	(26.92)	(28.45)	(73.91)	(75.44)		
040N	.97	1.03	.67	.73	---	---	---	---	.67	.73	1.35	1.41	---	---
S	(24.64)	(26.16)	(17.02)	(18.54)					(17.02)	(18.54)	(34.29)	(35.81)		

See footnotes at end of table.

TABLE I. Physical characteristics - Continued.

Dash number	Dimensions <u>1/</u> <u>2/</u> <u>3/</u>													
	A		B		C		D		E		F <u>4/</u>		Figure number	Weight (max)
	Min	Max	Min	Max	Min	Max	Min	Max	Min	Max	Min	Max	Min	Max
041N	7.45	8.05	2.97	3.03	1.673	1.693	2.85	2.91	.85	.91	.425	.455	3	1.6
S	(189.23)	(204.47)	(75.44)	(76.86)	(42.49)	(43.00)	(72.39)	(73.91)	(21.59)	(23.11)	(10.80)	(11.56)		lbs.
042N	7.45	8.05	2.97	3.03	1.673	1.693	2.85	2.91	.85	.91	.425	.455	3	1.6
S	(189.23)	(204.47)	(75.44)	(76.86)	(42.49)	(43.00)	(72.39)	(73.91)	(21.59)	(23.11)	(10.80)	(11.56)		lbs.
043N	5.563	5.688	1.027	1.153	1.625	1.750	2.814	2.938	.814	.938	.407	.469	3	1.1
S	(141.30)	(144.48)	(26.09)	(29.29)	(41.27)	(44.45)	(71.47)	(74.62)	(20.68)	(23.93)	(10.34)	(11.91)		lbs.
044N	4.23	4.35	3.26	3.32	1.27	1.33	2.44	2.56	.75	.91	.375	.455	3	1.5
S	(107.44)	(110.49)	(82.80)	(84.32)	(32.25)	(33.78)	(61.97)	(65.02)	(19.05)	(23.11)	(9.53)	(11.56)		lbs.
045N	4.23	4.35	3.26	3.32	1.27	1.33	2.44	2.56	.75	.91	.375	.455	3	1.5
S	(107.44)	(110.49)	(82.80)	(84.32)	(32.25)	(33.78)	(61.97)	(65.02)	(19.05)	(23.11)	(9.53)	(11.56)		lbs.
046N	5.74	7.00	3.16	3.22	---	---	3.35	3.41	.73	.79	.365	.395	7	12
S	(145.80)	(177.80)	(80.26)	(81.79)			(85.09)	(86.61)	(18.54)	(20.07)	(9.27)	(10.03)		oz.
047N	5.74	7.00	3.16	3.22	---	---	3.35	3.41	.73	.79	.365	.395	7	12
S	(145.80)	(177.80)	(80.26)	(81.79)			(85.09)	(86.61)	(18.54)	(20.07)	(9.27)	(10.03)		oz.
048N	5.74	6.20	1.185	2.015	---	---	1.93	1.99	.50	.56	.25	.28	8	3.4
S	(145.80)	(157.48)	(30.10)	(51.18)			(49.02)	(50.55)	(12.70)	(14.22)	(6.35)	(7.11)		oz.

See footnotes at end of table.

TABLE I. Physical characteristics - Continued.

Dash number	Dimensions <u>1/</u> <u>2/</u> <u>3/</u>													
	G <u>4/</u>		H <u>4/</u>		K		L		M		N		P	
	Min	Max	Min	Max	Min	Max	Min	Max	Min	Max	Min	Max	Min	Max
041N	.67	.71	.48	.54	1.47	1.53	.16	.22	.72	.78	---	---	---	---
S	(17.02)	(18.03)	(12.19)	(13.72)	(37.34)	(38.86)	(4.06)	(5.59)	(18.29)	(11.94)				
042N	.67	.71	.48	.54	1.47	1.53	.16	.22	.72	.78	---	---	---	---
S	(17.02)	(18.03)	(12.19)	(13.72)	(37.34)	(38.86)	(4.06)	(5.59)	(18.29)	(11.94)				
043N	.85	.91	.47	.53	1.47	1.53	.16	.22	.72	.78	---	---	---	---
S	(21.59)	(23.11)	(11.94)	(13.46)	(37.34)	(38.86)	(4.06)	(5.59)	(18.29)	(11.94)				
044N	.85	.91	.47	.53	.15	.21	.32	.38	.47	.53	---	---	---	---
S	(21.59)	(23.11)	(11.94)	(13.46)	(3.81)	(5.33)	(8.13)	(9.65)	(11.94)	(13.46)				
045N	.85	.91	.47	.53	.15	.21	.32	.38	.47	.53	---	---	---	---
S	(21.59)	(23.11)	(11.94)	(13.46)	(3.81)	(5.33)	(8.13)	(9.65)	(11.94)	(13.46)				
046N	.76	.83	.35	.41	.44	.50	.16	.22	1.56	1.62	---	---	---	---
S	(19.30)	(21.08)	(8.89)	(10.41)	(11.18)	(12.70)	(4.06)	(5.59)	(39.62)	(41.15)				
047N	.76	.83	.35	.41	.44	.50	.16	.22	1.56	1.62	---	---	---	---
S	(19.30)	(21.08)	(8.89)	(10.41)	(11.18)	(12.70)	(4.06)	(5.59)	(39.62)	(41.15)				
048N	.41	.47	.24	.30	.72	.78	.34	.40	1.20	1.26	2.949	2.984	---	---
S	(10.41)	(11.94)	(6.10)	(7.62)	(18.29)	(19.81)	(8.64)	(10.16)	(30.48)	(32.00)	(74.90)	(75.79)		

1/ Dimensions are in inches.2/ Metric equivalents are given for general information only.3/ Metric equivalents are in parentheses.4/ These dimensional values are for reference purposes only.

TABLE II. Electrical characteristics.

Dash number	Frequency range GHz	Coupling (dB)		Coupling variation (dB) max	Effective directivity (dB) min	Insertion loss (dB) max	VSWR max		RF input power to primary			Secondary N connector		Secondary line
		Nominal	Toleranc e				Primary line	Secondary line	Over frequency range Watts	Avg Watts	Peak KW	Primary line		
												Input	Output	
001N S	0.225 - 0.460	10	±1.0	±1.0	30	0.2	1.15:1	1.25:1	200	200	10	Female	Female	Female
002N S	0.950 - 2.0	10	±1.0	±1.0	30	0.2	1.15:1	1.15:1	200	200	10	Female	Female	Female
003N S	2 - 4	10	±0.1	±1.0	25	0.2	1.15:1	1.20:1	200	200	10	Female	Female	Female
004N S	4 - 10	10	±1.5	±1.2	17	0.2	1.20:1	1.30:1	200	200	10	Female	Female	Female
005N S	.216 - .450	20	±0.5	±0.5	30	0.15	1.10:1	1.20:1	50	50	10	Female	Male	Two Female
006N S	.225 - .460	20	±1.0	±1.0	30	0.2	1.15:1	1.25:1	100	100	10	Female	Female	Female
007N S	.940 - 1.975	20	±1.0	±0.5	25	0.35	1.20:1	1.30:1	50	50	10	Female	Female	Two Female
008N S	.950 - 2.0	20	±1.0	±1.0	30	0.2	1.15:1	1.15:1	500	500	10	Female	Female	Female
009N S	1.9 - 4.0	20	±1.0	±0.5	25	0.35	1.25:1	1.35:1	50	50	10	Female	Male	Two Female
010N S	4 - 10	20	±1.5	±1.2	17	0.2	1.20:1	1.30:1	500	500	10	Female	Female	Female
011N S	.225 - .460	30	±1.0	±1.0	30	0.2	1.15:1	1.15:1	500	1000	10	Female	Female	Female
012N S	.950 - 2.0	30	±1.0	±1.0	30	0.2	1.15:1	1.25:1	500	1000	10	Female	Female	Female
013N S	2 - 4	30	±2.0	±1.0	25	0.2	1.15:1	1.25:1	500	1000	10	Female	Female	Female
014N S	4 - 10	30	±1.5	±1.2	17	0.2	1.20:1	1.30:1	500	500	10	Female	Female	Female
015N S	.030 - .960	1/	1/	6 dB/octave	30	---	1.15:1	1.25:1	1000	1000	10	Female	Male	Two Female
016N S	.1 - 1.2	2/	2/	6 dB/octave	30	---	1.15:1	1.25:1	1000	1000	10	Female	Male	Two Female
017N S	.46 - .95	10	±2.0	±1.0	30	0.2	1.15:1	1.25:1	200	200	10	Female	Female	Female
018N S	.46 - .95	20	±2.0	±1.0	30	0.2	1.15:1	1.25:1	500	500	10	Female	Female	Female
019N S	.24 - .50	10	±0.5	±0.3	20	0.2	1.10:1	1.20:1	200	200	10	Female	Female	Female
020N S	.24 - .50	20	±0.5	±0.3	20	0.2	1.10:1	1.20:1	500	500	10	Female	Female	Female
021N S	.24 - .50	30	±0.5	±0.3	20	0.2	1.10:1	1.20:1	500	500	10	Female	Female	Female
022N S	.50 - 1.0	10	±0.5	±0.3	20	0.2	1.10:1	1.20:1	200	200	10	Female	Female	Female
023N S	.50 - 1.0	20	±0.5	±0.3	20	0.2	1.10:1	1.20:1	500	500	10	Female	Female	Female
024N S	.50 - 1.0	30	±0.5	±0.3	20	0.2	1.10:1	1.20:1	500	500	10	Female	Female	Female

See footnotes at end of table.

TABLE II. Electrical characteristics - Continued.

Dash number	Frequency range GHz	Coupling (dB)		Coupling variation (dB) max	Effective directivity (dB) min	Insertion loss (dB) max	VSWR max		RF input power to primary			Secondary N connector		Secondary line
		Nominal	Tolerance				Primary line	Secondary line	Over frequency range Watts	Avg Watts	Peak KW	Primary line		
												Input	Output	
025N S	.92 - 2.2	10	±0.5	±0.3	20	0.2	1.10:1	1.20:1	200	200	10	Female	Female	Female
026N S	.92 - 2.2	20	±0.5	±0.3	20	0.2	1.10:1	1.20:1	500	500	10	Female	Female	Female
027N S	.92 - 2.2	30	±0.5	±0.3	20	0.2	1.10:1	1.20:1	500	500	10	Female	Female	Female
028N S	1.7 - 4.2	10	±0.5	±0.3	20	0.2	1.15:1	1.20:1	200	200	10	Female	Female	Female
029N S	1.7 - 4.2	20	±0.5	±0.3	20	0.2	1.15:1	1.20:1	500	500	10	Female	Female	Female
030N S	1.7 - 4.2	30	±0.5	±0.3	20	0.2	1.15:1	1.20:1	500	500	10	Female	Female	Female
031N S	3.7 - 8.3	10	±0.5	±0.3	17	0.2	1.20:1	1.25:1	200	200	10	Female	Female	Female
032N S	3.7 - 8.3	20	±0.5	±0.3	17	0.2	1.20:1	1.25:1	500	500	10	Female	Female	Female
033N S	3.7 - 8.3	30	±0.5	±0.3	17	0.2	1.20:1	1.25:1	500	500	10	Female	Female	Female
034N S	7.0 - 12.4	10	±0.5	±0.3	15	0.3	1.25:1	1.30:1	100	100	2	Female	Female	Female
035N S	7.0 - 12.4	20	±0.5	±0.3	15	0.3	1.25:1	1.30:1	100	100	2	Female	Female	Female
036N S	7.0 - 12.4	30	±0.5	±0.3	15	0.3	1.25:1	1.30:1	100	100	2	Female	Female	Female
037N S	.125 - .250	20	±0.5	±0.3	20	0.2	1.10:1	1.20:1	500	500	2	Female	Female	Female
038N S	1.0 - 12.4	10	±1.5	±1.0	12	0.7	1.35:1	1.50:1	20	20	3	Female	Female	Female
039N S	1.0 - 12.4	20	±1.5	±1.0	15	1.0	1.35:1	1.50:1	20	20	3	Female	Female	Female
040N S	3.7 - 8.3	10	±0.3	±0.3	20	0.8	1.20:1	1.20:1	10	10	2	Male	Female	Female
041N S	.46 - .95	30	±2.0	±1.0	30	0.2	1.15:1	1.15:1	500	500	10	Female	Female	Female
042N S	.46 - .95	40	±2.0	±1.0	30	0.2	1.15:1	1.15:1	500	500	10	Female	Female	Female
043N S	.95 - 2.0	6	±2.0	±1.0	30	0.2	1.15:1	1.15:1	200	200	10	Female	Female	Female
044N S	1.5 - 3.0	10	±1.0	±1.0	25	0.2	1.25:1	1.25:1	100	100	3	Female	Female	Female
045N S	1.5 - 3.0	20	±1.0	±1.0	25	0.2	1.25:1	1.25:1	100	100	3	Female	Female	Female
046N S	1.0 - 18	13	±1.5	±1.5	25	0.3	1.35:1	1.40:1	200	200	3	Male	Female	Female
047N S	1.0 - 18	13	±1.5	±1.5	25	0.3	1.35:1	1.40:1	200	200	3	Female	Male	Female
048N S	1.0 - 18	16	±0.5	±1.0	12	0.8	1.40:1	1.50:1	20	20	3	Female	Female	Female

1/ 60 dB ±1 dB at 30 MHz; 54 dB ±1dB at 60 MHz; 48 dB ±1 dB at 120 MHz; 42 dB ±1 dB at 240 MHz; 36 dB ±1 dB at 480 MHz; and 30 dB ±1 dB at 960 MHz.

2/ 62 dB ±1 dB at 100 MHz; 56 dB ± at 200 MHz; 50 dB ±1 dB at 400 MHz; 44 dB ±1 dB at 800 MHz; and 42 dB ±1 dB at 1200 MHz.

MIL-DTL-15370/3E

TABLE III. Cross-reference of part number/AN nomenclature.

Dash number	AN nomenclature
001	CU-1525/U
002	CU-1528/U
003	CU-1531/U
004	CU-1533/U
005	CU-1516/U
006	CU-1526/U
007	CU-1517/U
008	CU-1529/U
009	CU-1518/U
010	CU-1534/U
011	CU-1527/U
012	CU-1530/U
013	CU-1532/U
014	CU-1535/U
015	CU-1521/U
016	CU-1520/U

Referenced Documents: In addition to MIL-DTL-15370, this document references the following:
MIL-PRF-39012

Marginal notations are not used in this revision to identify changes with respect to the previous issue due to the extent of the changes.

Custodians:
Army - CR
Navy - EC
Air Force - 11
DLA - CC

Preparing activity:
DLA - CC

Review activities:
Army - MI
Navy - AS, CG, MC, OS, SH
Air Force - 99

(Project 5985-2008-029)

NOTE: The activities listed above were interested in this document as of the date of this document. Since organizations and responsibilities can change, you should verify the currency of the information above using the ASSIST Online database at <http://assist.daps.dla.mil/>.