

INCH - POUND

MIL-DTL-13220/3A

26 May 2015

MIL-DTL-13220/3

25 September 2008

DETAIL SPECIFICATION SHEET

GRAB HOOK, EYE

This specification is approved for use by all Departments
and Agencies of the Department of Defense.

The requirements for acquiring the product described herein shall consist of this specification sheet and
MIL-DTL-13220E.

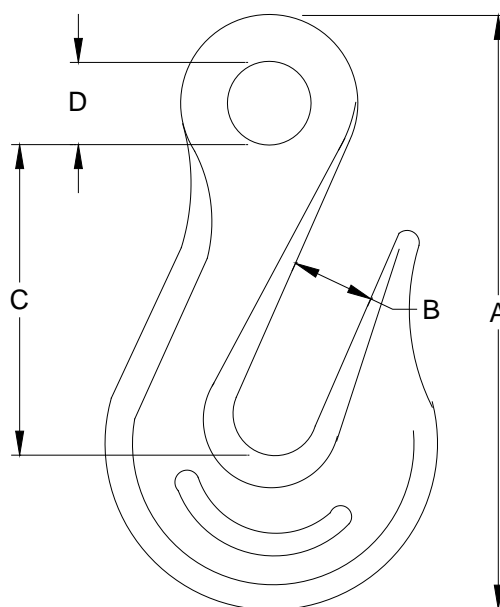


FIGURE 1. Grab hook.

AMSC N/A

FSC 4030



MIL-DTL-13220/3A

Dimensions and configurations: See figure 1.

Hook		Dimension				WLL
Code	Chain size	A	B	C	D	
W	1/4	3.03 (76.96)	0.35 (8.89)	2.00 (50.8)	0.52 (13.21)	1,500
X	5/16	4.05 (102.87)	0.45 (11.43)	2.22 (56.39)	0.64 (16.26)	2,000
Y	3/8	4.75 (120.65)	0.50 (12.7)	2.55 (64.77)	0.72 (18.29)	2,500
Z	1/2	6.25 (158.75)	0.65 (16.51)	3.35 (85.09)	0.93 (23.62)	3,600

NOTES:

1. Dimensions are in inches.
2. Metric equivalents are given for information only.
3. Chain size relates to the size of the chain to be used.
4. Work load limit (WLL) in pounds is recommended weight limit for safe.
5. Metal and finish:
Cast or forged steel hooks with zinc finish in accordance with ASTM B633, type 6.
CRES steel hooks with passivation finish in accordance with SAE-AMS2700.

FIGURE 1. Grab hook – Continued.

Referenced documents. In addition to MIL-DTL-13220, this document references the following:

ASTM B633
SAE-AMS2700

CONCLUDING MATERIAL

Custodians:

Army - AV
Navy - AS
Air Force - 99
DLA - CC

Preparing activity:
DLA - CC

Review activities:

Army - MI
Navy - CG, MC
Air Force - 50, 70, 71

(Project 4030-2015-006)

NOTE: The activities listed above were interested in this document as of the date of this document. Since organizations and responsibilities can change, you should verify the currency of the information above using the ASSIST Online database at <http://assist.dla.mil>