

MIL-D-22706E(AS)  
AMENDMENT 1  
25 January 1991

## MILITARY SPECIFICATION

### DUCT AND SCUFF COVER, PNEUMATIC, FLEXIBLE

This amendment forms a part of Military Specification MIL-D-22706E(AS), dated 15 October 1985 and is approved for use by all Departments and Agencies of the Department of Defense.

#### PAGE 2

Paragraph 2.1, under military standards: Delete "MIL-STD-143 Standards and Specification; Order of Precedence for the Selection of" and substitute "MIL-STD-970 Standards and Specifications, Order of Preference for the Selection of."

#### PAGE 3

Paragraph 3.2 Selection of specifications and standards, line 3, delete "MIL-STD-143" and substitute "MIL-STD-970."

#### PAGE 4

Delete and substitute the paragraph 3.4 Design and Construction as follow:

3.4 Design and construction. The assembly shall consist of a length specified by the procuring activity or contracting activity (see 1.2 and 6.2). An easily replaceable scuff cover (Figure 1) shall be used. The duct shall be manufactured using a two layer (minimum) construction (silicone covered by reinforcement material will constitute one layer). Reinforcement material is defined as yarn spiraled on the silicone at approximately 45° to the duct or one braid of yarn. The second layer of reinforcement material shall be placed at approximately 90° to the first reinforcement layer. The inner wall of silicone shall have minimum wall thicknesses of .025 and .110 of an inch respectively, followed by reinforcement material as shown in Figure 2. The duct shall be designed to be compatible with MS17833 and MS17835 (see Appendix).

AMSC N/A

FSC 4720

DISTRIBUTION STATEMENT A. Approved for public release; distribution is unlimited.

MIL-D-22706E(AS)  
AMENDMENT 1

Delete and substitute the paragraph 3.4.1.1 Dimensions as follow:

3.4.1.1 Dimensions. The duct shall be of 30-foot or 60-foot length as specified. The duct shall have a uniform wall thickness with a tolerance of  $\pm .032$  inch exclusive of the scuff cover. The inside diameter of the duct shall be not less than 3.500 inches nor greater than 3.563 inches at standard day conditions. The outside diameter shall be as small as possible consistent with the requirements specified herein but shall be not greater than 4.125 inches. The duct construction shall be uniform throughout so that it will be possible to cut off a section of the duct at any location and reconnect to any of the standard beaded shank end fittings. No painting nor any other special treatment of the cut surface shall be required.

PAGE 6

Delete and substitute Figure 2 as per attached drawing.

Preparing Activity:  
Navy - AS

(Project No. 4720-N029)

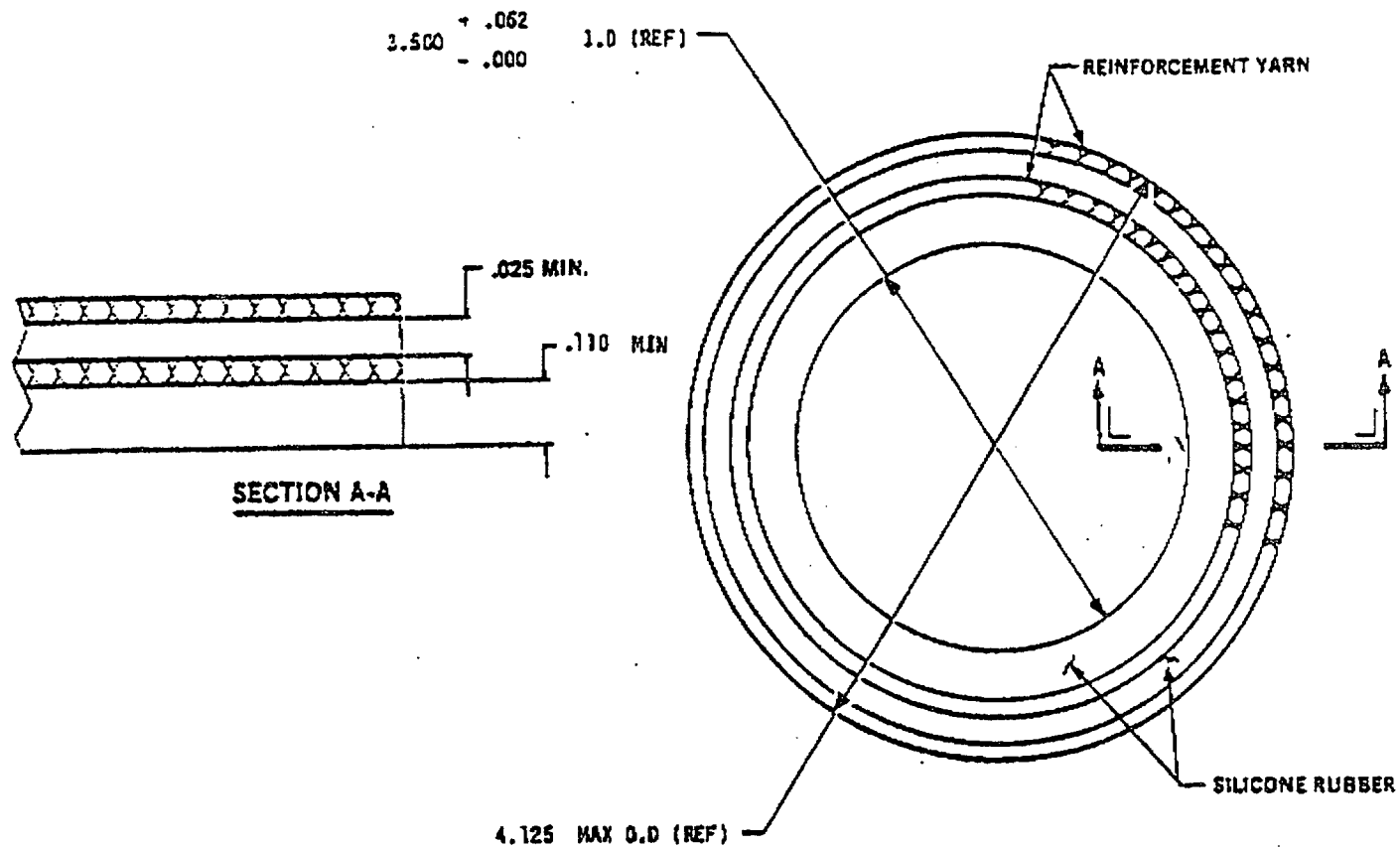


FIGURE 2. Duct 30-foot, 60-foot length.