

MIL-C-85528/3

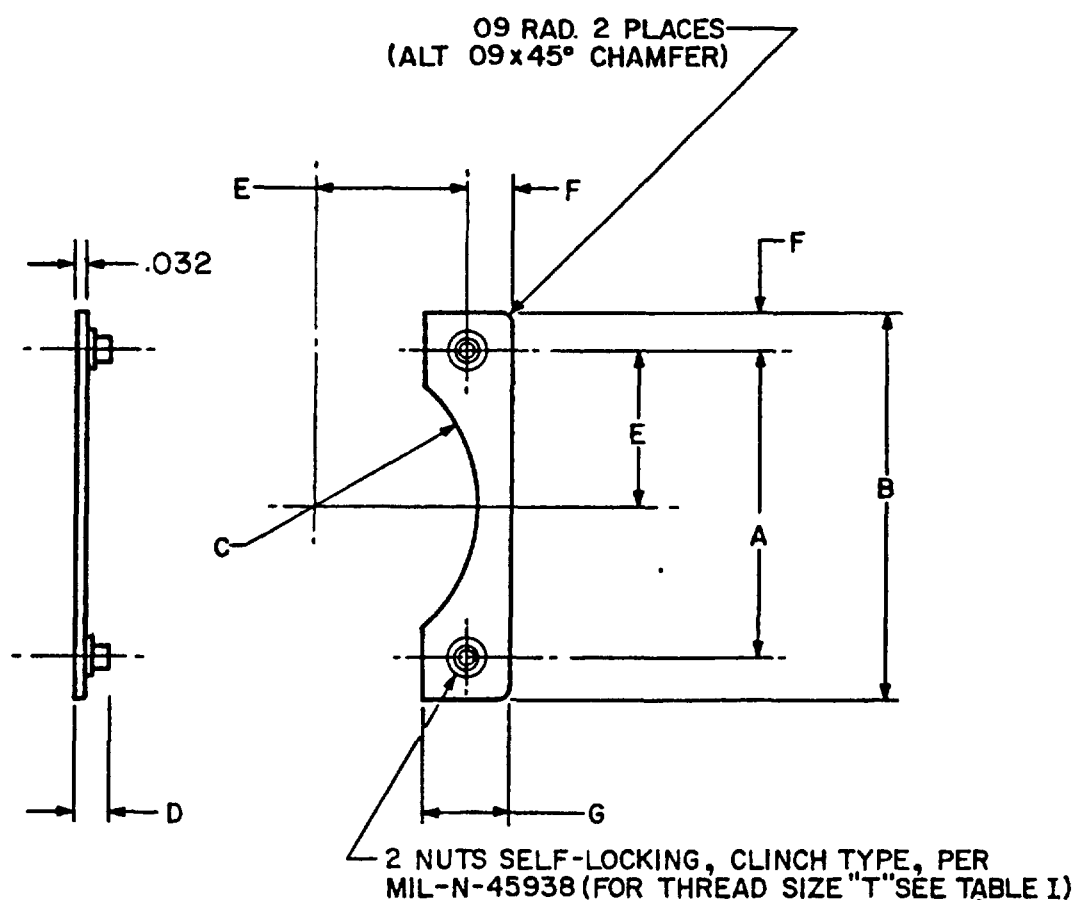
19 May 1983

MILITARY SPECIFICATION SHEET

CONNECTOR, ELECTRICAL, MOUNTING DEVICE, FLANGE TYPE,
1/4 MOUNTING PERIMETER DEVICE, TYPE III (LIGHT DUTY)

This specification is approved for use by all Departments and Agencies of the Department of Defense.

The complete requirements for acquiring the mounting flanges described herein shall consist of this document and the latest issue of specification MIL-C-85528.



NOTES:

1. Dimensions are in inches.
2. Metric equivalents are given for general information only.
3. Unless otherwise specified, tolerance is $\pm .010$.
4. Shell size variances (see Table I).
5. Cross referencing-applications (see Table II).

FIGURE 1. Mounting flange, Type III.

MIL-C-85528/3

REQUIREMENTS:

Physical:

Material:

Mounting flange - Aluminum alloy .040 thk 2024-T3 per QQ-A-250/5F.

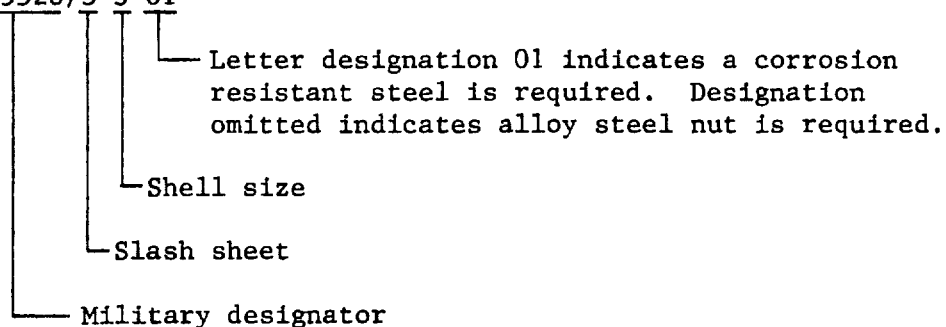
Nut, self-locking, clinch type, alloy steel per MIL-N-45938. If a corrosion resistant steel is required (use AISI 303 per FED-STD-66 or A-286 per AMS 5734) add C to Part No. (see example).

Finish:

Mounting flange - Alodine per MIL-C-5541.

MILITARY PART NUMBER:

Example: M85528/3-3-01



MIL-C-85528/3

TABLE I. Mounting flanges.

PART NUMBER M85528/3-	SHELL SIZE	T THRD UNC-3B	A $\pm .003$	B $\pm .015$	C $+.010$ $-.000$	D	E $\pm .001$	F $+.005$ $-.000$	G $+.010$ $-.000$
3	3	4.40	.625	.925	.320	.106/.166	.312	.150	.300
6	6	4.40	.469	.766	.183	.106/.166	.234	.149	.298
7	7	4.40	.719	1.016	.359	.106/.166	.359	.149	.298
8	8	4.40	.594	.891	.277	.106/.166	.297	.148	.296
10	10	4.40	.719	1.016	.359	.106/.166	.359	.149	.298
12	12	4.40	.812	1.109	.425	.106/.166	.406	.148	.296
14	14	4.40	.906	1.203	.492	.106/.166	.453	.148	.296
16	16	4.40	.969	1.266	.547	.106/.166	.484	.149	.298
18	18	4.40	1.062	1.390	.610	.106/.166	.531	.164	.328
19	19	4.40	.906	1.203	.492	.106/.166	.453	.148	.296
20	20	4.40	1.156	1.510	.672	.106/.166	.578	.177	.354
22	22	4.40	1.250	1.640	.739	.106/.166	.625	.195	.390
24	24	6.32	1.375	1.760	.797	.123/.183	.687	.193	.386
25	25	6.32	1.500	1.859	.845	.123/.183	.750	.179	.358
27	27	4.40	.969	1.266	.547	.106/.166	.484	.149	.298
28	28	6.32	1.562	2.000	.920	.123/.183	.781	.219	.438
32	32	6.32	1.750	2.312	1.058	.123/.183	.875	.281	.562
36	36	6.32	1.938	2.500	1.170	.123/.183	.969	.281	.562
37	37	4.40	1.187	1.500	.670	.106/.166	.593	.157	.314
61	61	4.40	1.437	1.812	.812	.106/.166	.718	.188	.376

MIL-C-85528/3

TABLE II Mounting flange cross reference-applications

SHELL SIZES																																			
MIL-C-5015		MIL-C-26482				MIL-C-81703	MIL-C-27599				MIL-C-38999							MIL-C-81511	MIL-C-83723																
		MS3102	MS3110	MS3112	MS3120	MS3122	MS3470	MS3472	MS3130	MS20026	MS20030	MS27334	MS27335	MS27338	MS27339	MS27466	MS27469	MS27472	MS27475	MS27476	MS27496	MS27497	MS27499	MS27505	MS27508	MS27513	MS27515	MIL-C-81511	MIL-C-83723/1A	MIL-C-83723/2B	MIL-C-83723/3B	MIL-C-83723/4B			
8	8S	8S	8	8	8	8	8	—	—	—	—	8	8	8	8	—	—	8	8	8	—	—	8	—	8	8	8	8	8	8	8	8	8	8	
10	10	10S	10	10	10	10	10	—	7	9	9	10	10	10	10	9	9	10	10	10	10	9	10	9	10	10	10	10	10	10	10	10	10	10	
12	12S	12	12	12	12	12	—	—	—	11	11	12	12	12	12	11	11	12	12	12	12	11	12	11	—	—	12	12	12	12	12	12	12	12	12
14	14S	14S	14	14	14	14	—	—	—	13	13	14	14	14	14	13	13	14	14	14	13	—	14	13	—	—	14	14	14	14	14	14	14	14	14
16	16S	16S	16	16	16	16	—	—	—	15	15	16	16	16	16	15	15	16	16	16	15	—	16	15	—	—	16	16	16	16	16	16	16	16	16
18	18	18	18	18	18	18	—	—	—	17	17	18	18	18	18	17	17	18	18	18	17	—	18	17	—	—	18	18	18	18	18	18	18	18	18
20	20	20	20	20	20	20	—	—	—	19	19	20	20	20	20	19	19	20	20	20	19	—	20	19	—	—	20	20	20	20	20	20	20	20	20
22	22	22	22	22	22	22	—	—	—	21	21	22	22	22	22	21	21	22	22	22	21	—	22	21	—	—	22	22	22	22	22	22	22	22	22
24	24	24	24	24	24	24	—	—	—	23	23	24	24	24	24	23	23	24	24	24	23	—	24	23	—	—	24	24	24	24	24	24	24	24	24
25	—	—	—	—	—	—	—	—	—	25	25	—	—	—	—	25	25	—	—	—	25	—	—	—	—	—	—	—	—	—	—	—	—	—	—

MIL-C-85528/3

Custodians:

Army - CR
Navy - AS
Air Force - 85

Preparing activity:

Navy - AS
(Project No. 5935-3284-3)

Review activities:

Army - AR, MI
Navy - EC, SH
Air Force - 11, 99
DLA - ES

User activities:

Army
Navy
Air Force