

MIL-C-43467

7 December 1966

MILITARY SPECIFICATION

CANDLE BURNER, AND CANDLELIGHTER AND SNUFFER

This specification is mandatory for use by all Departments and Agencies of the Department of Defense.

1. SCOPE

1.1 Scope.- This specification covers one type of candle burner and one type of candlelighter and snuffer.

1.2 Classification.- Items shall be selected from the following as specified (see 6.2):

- | | | |
|----------|---|---------------------------|
| Item 1 | - | Candle burner |
| Finish 1 | - | Polished Brass |
| Finish 2 | - | Chromium Plated |
| Item 2 | - | Candlelighter and snuffer |

2. APPLICABLE DOCUMENTS

2.1 The following documents, of the issue in effect on date of invitation for bids or request for proposal, form a part of this specification to the extent specified herein:

SPECIFICATIONS

FEDERAL

- | | | |
|-----------|---|-------------------------------------|
| QQ-C-320 | - | Chromium Plating (Electrodeposited) |
| PPP-B-566 | - | Boxes, Folding, Paperboard |
| PPP-B-636 | - | Box, Fiberboard |
| PPP-B-676 | - | Box, Setup |
| PPP-C-843 | - | Cushioning Material, Cellulosic |

STANDARDS

MILITARY

- | | | |
|-------------|---|--|
| MIL-STD-105 | - | Sampling Procedures and Tables for Inspection
By Attributes |
| MIL-STD-129 | - | Marking for Shipment and Storage |

FSC 9925

MIL-C-43467

DRAWINGS

ARMY NATICK LABORATORIES

14-1-46	- Candle Burner
14-1-48	- Chapel Candlelighter and Snuffer; Assembly Complete
14-1-49	- Candlelighter and Snuffer Details

(Miniature copies of Drawings 14-1-46, 14-1-48 and 14-1-49, identified as figures 1, 2 and 3 respectively, are attached for information purposes only).

(Copies of specifications, standards and drawings required by suppliers in connection with specific procurement functions should be obtained from the procuring activity or as directed by the contracting officer.)

3. REQUIREMENTS

3.1 Preproduction sample.- When specified (see 6.2), before production is commenced, a sample of the item covered by this specification shall be submitted or made available to the contracting officer or his authorized representative for approval in accordance with 4.2. The approval of the preproduction sample authorizes the commencement of production, but does not relieve the supplier of responsibility for compliance with all applicable provisions of this specification. The preproduction sample shall be manufactured in the same facilities to be used for the manufacture of the production items.

3.2 Materials.- Materials shall conform to the applicable specifications and requirements specified hereinafter. Materials not specifically defined shall be of the quality normally used for the purpose in commercial practice.

3.2.1 Brass.- The brass shall be commercial brass.

3.2.2 Wood.- The wood for the candlelighter and snuffer handle shall be hard maple.

3.3 Construction.

3.3.1 Candle burner.- The candle burner shall be fabricated of brass specified in 3.2.1 and shall conform to Drawing 14-1-46.

3.3.2 Candlelighter and snuffer.- The candlelighter and snuffer shall conform to Drawing 14-1-48. The handle shall be fabricated from wood specified in 3.2.2. The brass components shall be fabricated from the brass specified in 3.2.1 and finished as specified in 3.4.1.

MIL-C-43467

3.4 Finish.-

3.4.1 Finish 1, polished brass.- All exterior surfaces shall be highly polished.

3.4.2 Finish 2, chromium plated.- All surfaces shall be chromium plated in accordance with class 1, type I of QQ-C-320.

3.4.3 Handle.- The handle specified in 3.3.2 shall be stained a dark mahogany color and coated with a clear organic finish.

3.5 Workmanship.- Metallic and wood components shall be free from sharp edges, burrs and slivers. Plating and finishes, where required, shall be free from area of poor or no coverage.

4. QUALITY ASSURANCE PROVISIONS

4.1 Responsibility for inspection.- Unless otherwise specified in the contract or purchase order, the supplier is responsible for the performance of all inspection requirements as specified herein. Except as otherwise specified, the supplier may utilize his own facilities or any commercial laboratory acceptable to the Government. The Government reserves the right to perform any of the inspection set forth in the specification where such inspections are deemed necessary to assure supplies and services conform to prescribed requirements.

4.2 Preproduction sample inspection.- When a preproduction sample is required, it shall be examined for the defects in table I, and specified dimensions.

4.3 Sampling for inspection.- Sampling for inspection shall be in accordance with the provisions set forth in MIL-STD-105, except where otherwise indicated hereinafter.

4.3.1 Component and material inspection.- In accordance with 4.1 above, components and materials shall be inspected and tested in accordance with all the requirements of referenced specifications, drawings and standards unless otherwise excluded, amended, modified or qualified in this specification, or applicable purchase document.

4.3.2 End product inspection.- A lot shall consist of all end items of one kind offered for inspection at one time. The sample unit for this inspection shall be one completely fabricated end item.

4.3.2.1 Visual examination.- Examination shall be made of the end item for defects in table I. The inspection level shall be level III with an acceptable quality level (AQL) of 6.5, expressed in terms of defects per hundred units.

MIL-C-43467

TABLE I.- Visual examination of defects

<u>Examine</u>	<u>Defect</u>
Construction and workmanship	Sharp edge, burr or sliver; component missing or damaged; threaded parts loose; moving parts fail to operate, bind or excessively loose (candlelighter and snuffer).
Finish	Not finish specified

4.3.2.2 Dimensional examination.- Inspection shall be made of the end item for compliance with dimensions specified. Any deviation from specified requirements shall constitute a defect. The inspection level shall be S-4 with an AQL of 4.0, expressed in terms of defects per hundred units.

4.3.3 Examination of preparation for delivery.- An examination shall be made to determine that packaging, packing, and marking are in accordance with Section 5 of this specification. The sample unit shall be one shipping container fully prepared for delivery except it need not be sealed. The lot shall be the number of containers offered for inspection at one time. The inspection level shall be S-2 with an AQL of 4.0, expressed in terms of defects per hundred units. Defects shall be scored as specified in table II.

TABLE II.- Examination of preparation for delivery

<u>Examine</u>	<u>Defect</u>
Marking	Omitted; incorrect; illegible; of improper size, location, sequence, or method of application.
Materials	Component missing or damaged.
Workmanship	Inadequate application of components such as incomplete closure of container flaps; strapping or sealing, improper or missing; closures improperly affixed; components improperly secured, inadequate stapling; bulging or distortion of container.
Weight	Net weight exceeds requirements.

MIL-C-43467

5. PREPARATION FOR DELIVERY

5.1 Packaging.- Packaging shall be level A or C as specified (see 6.2).

5.1.1 Level A.-

5.1.1.1 Candle burner.- Each candle burner shall be completely wrapped in two thicknesses of tissue paper. Ten wrapped candle burners shall be packaged in a snug-fitting folding or setup paperboard box conforming to variety 1, style III or IV, type B, class a of PPP-B-566; or type I, variety 1, class A, style 2 of PPP-B-676, respectively. Closure shall be in accordance with the appendix of the applicable box specification (see 6.3).

5.1.1.2 Candlelighter and snuffer.- Each candlelighter and snuffer shall be packaged in a snug-fitting fiberboard box conforming to style optional, type CF, variety SW, or type SF, class domestic of PPP-B-636. Prior to packaging, the handle shall be disassembled from the candlelighter and snuffer and the two components of the candlelighter and snuffer shall be individually wrapped in minimum 1/4-inch thick cushioning material conforming to type I or II, class B of PPP-C-843. Each box shall be securely closed, (see 6.3).

5.1.2 Level C.- Candle burners and candlelighter and snuffers shall be packaged to afford adequate protection against damage during shipment from the supply source to the first receiving activity. The supplier may use his standard practice, when it meets this requirement.

5.2 Packing.- Packing shall be level A, B, or C as specified (see 6.2).

5.2.1 Level A.-

5.2.1.1 Candle burners.- Candle burners, packaged as specified in 5.1, shall be packed in a snug-fitting fiberboard shipping container conforming to style RSC, V3c or V3s of PPP-B-636. The weight of contents of each shipping container shall not exceed 65 pounds. Closure, waterproofing by means of tape, and reinforcing with flat strapping or tape banding shall be in accordance with the appendix of PPP-B-636.

5.2.1.2 Candlelighter and snuffers.- Candlelighter and snuffers, packaged as specified in 5.1, shall be packed as specified in 5.2.1.1.

5.2.2 Level B.-

5.2.2.1 Candle burners.- Unless otherwise specified (see 5.2.2.1.1), candle burners, packaged as specified in 5.1, shall be packed in a snug-fitting fiberboard shipping container conforming to style RSC, type CF, variety SW, or type SF, class domestic of PPP-B-636. The weight of contents of each shipping container shall not exceed 65 pounds. Closure shall be in accordance with Method II of the appendix of PPP-B-636.

MIL-C-43467

5.2.2.1.1 When specified (see 6.2), weather-resistant fiberboard specified in 5.2.1.1 shall be used for the shipping container.

5.2.2.2 Candlelighter and snuffers.— Candlelighter and snuffers, packaged as specified in 5.1, shall be packed as specified in 5.2.2.1.

5.2.3 Level C.— Candle burners and candlelighter and snuffers, packaged as specified in 5.1, shall be packed in a manner to insure carrier acceptance and safe delivery at destination at the lowest transportation rate for such supplies. Containers shall be in accordance with rules or regulations of carriers applicable to the mode of transportation.

5.3 Marking.— In addition to any special marking required by the contract or order, interior packages and shipping container shall be marked in accordance with MIL-STD-129.

6. NOTES

6.1 Intended use.— The candle burner covered by this specification is intended to be used with 15/16 inch diameter candles to prevent dripping of wax. The candlelighter and snuffer covered by this specification is intended to be used with tapers to light and extinguish candles in military chapels.

6.2 Ordering data.— Procurement documents should specify the following:

- (a) Title, number and date of this specification.
- (b) Item required (see 1.2).
- (c) Finish required for item 1 (see 1.2).
- (d) When preproduction sample is required (see 3.1).
- (e) Selection of applicable levels of packaging and packing (see 5.1 and 5.2).
- (f) When weather-resistant fiberboard is required for level B pack (see 5.2.2.1.1).

6.3 Packaging.— The method of packaging referred to in 5.1.1.1 and 5.1.1.2 is similar to method III of MIL-P-116.

MIL-C-43467

Custodians:

Army - GL
Navy - PE
Air Force - 28

Preparing activity:

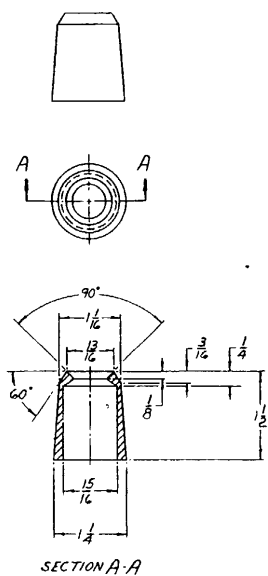
Army - GL
Project No. 9925-0116

Review activities:

Navy - PE
Air Force - 28
Armed Forces Chaplains Board

Review information is current as of the date of this document. For future coordination of changes to this document, draft circulation should be based on the information in the current Federal Supply Classification Listing of DOD Documents.

MIL-C-43467



SECTION A-A

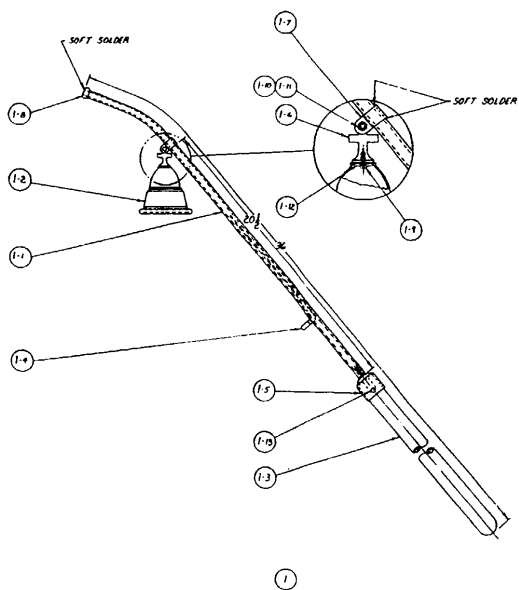
NOTE:
 FINISH 1, BRASS
 FINISH 2, CHROME PLATE
 REMOVE BURRS AND SHARP EDGES

REVISIONS					
SYM	EW/CL	DR	CK	DATE	APPR

ITEM NO.	DESCRIPTION	NO. REQD	MATERIAL	MATL SPEC	NO.
ITEM LIST					
INTERPRET THIS DRAWING IN ACCORDANCE WITH SPEC MIL-C-10100 UNLESS OTHERWISE SPECIFIED: DIMENSIONS ARE IN INCHES; FRACTIONS TO 16THS; TOLERANCES: FRACTIONS UNLESS OTHERWISE SPECIFIED; DECIMALS: .0005 THIS FIGURE IS A MINOR COPY OF ARMY NITICE LABORATORIES DRAWING NUMBER 1-96, REVISION NUMBER DATED 23/22/54 THIS COPY IS FOR INFORMATION ONLY; THE DRAWING REFERENCED IN PARAGRAPH 2.1 GOVERNS.					

FIGURE - 1 CANDLE BURNER

9

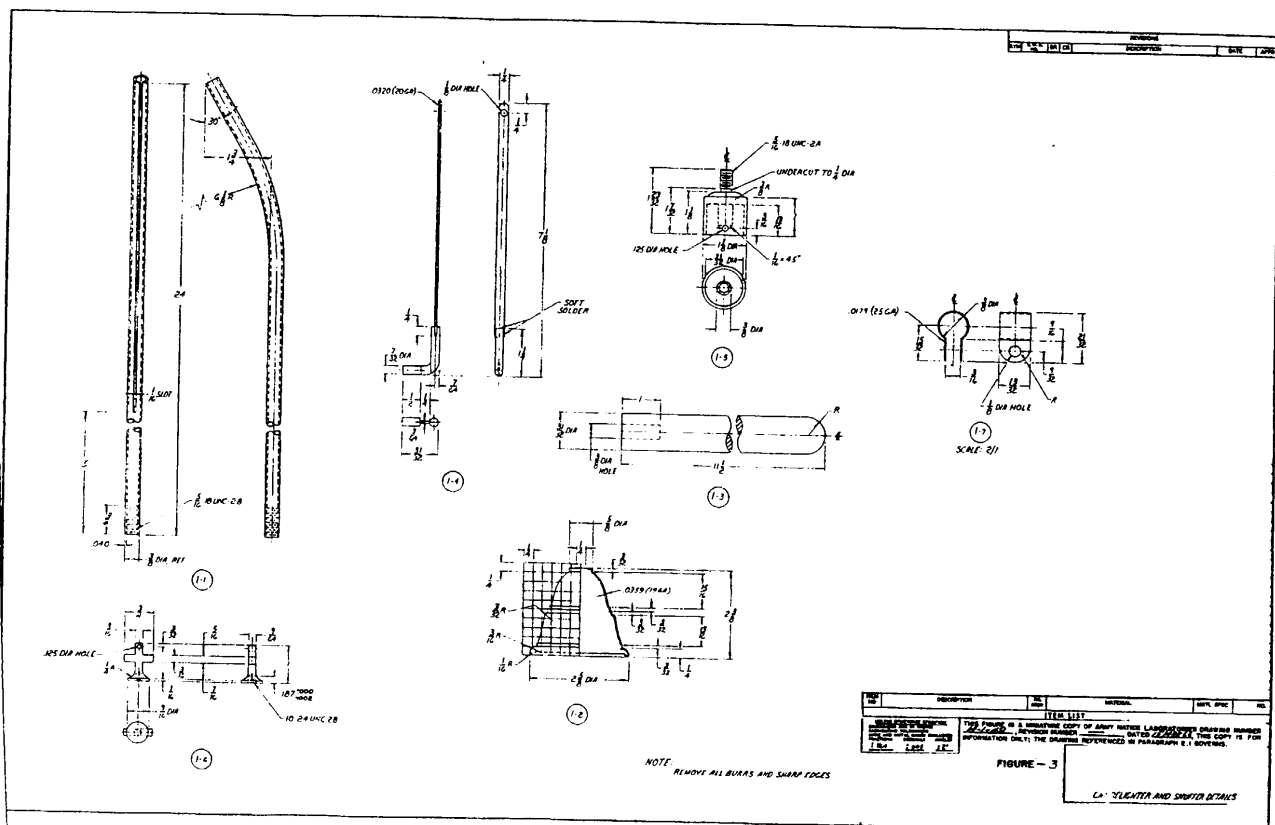


NO.	DESCRIPTION	QTY	UNIT	DATE	BY
1-1	PIPE (3/8" DIA. X 1/2" L)	1			
1-2	PIPE (1/2" DIA. X 1/2" L)	1			
1-3	PIPE (1/2" DIA. X 1/2" L)	1			
1-4	PIPE (1/2" DIA. X 1/2" L)	1			
1-5	PIPE (1/2" DIA. X 1/2" L)	1			
1-6	PIPE (1/2" DIA. X 1/2" L)	1			
1-7	PIPE (1/2" DIA. X 1/2" L)	1			
1-8	PIPE (1/2" DIA. X 1/2" L)	1			
1-9	PIPE (1/2" DIA. X 1/2" L)	1			
1-10	PIPE (1/2" DIA. X 1/2" L)	1			
1-11	PIPE (1/2" DIA. X 1/2" L)	1			
1	ASSEMBLY COMPLETE	1		12-1-47	

THIS FORM IS A REPRODUCTION OF AN AMERICAN SOCIETY OF MECHANICAL ENGINEERS DRAWING. IT IS NOT TO BE USED FOR REPRODUCTION WITHOUT THE WRITTEN PERMISSION OF THE SOCIETY OF MECHANICAL ENGINEERS. THE ORIGINAL DRAWING IS FILED IN THE ARCHIVES OF THE SOCIETY OF MECHANICAL ENGINEERS. THE DATE OF THE ORIGINAL DRAWING IS 12-1-47.

FIGURE - 2 CHAPEL CANDLELIGHTER AND SNUFFER
ASSEMBLY COMPLETE

MIL-C-43467



"to detach this form, cut along this line"

SPECIFICATION ANALYSIS SHEET		Form Approved Budget Bureau No. 119-R004
INSTRUCTIONS		
This sheet is to be filled out by personnel either Government or contractor, involved in the use of the specification in procurement of products for ultimate use by the Department of Defense. This sheet is provided for obtaining information on the use of this specification which will insure that suitable products can be procured with a minimum amount of delay and at the least cost. Comments and the return of this form will be appreciated. Fold on lines on reverse side, staple in corner, and send to preparing activity.		
SPECIFICATION		
Candle Burner, and Canleighter and Snuffer MIL-C-43467		
ORGANIZATION	CITY AND STATE	
CONTRACT NO.	QUANTITY OF ITEMS PROCURED	DOLLAR AMOUNT
		\$
MATERIAL PROCURED UNDER A		
<input type="checkbox"/> DIRECT GOVERNMENT CONTRACT <input type="checkbox"/> SUBCONTRACT		
1. HAS ANY PART OF THE SPECIFICATION CREATED PROBLEMS OR REQUIRED INTERPRETATION IN PROCUREMENT USE?		
A. GIVE PARAGRAPH NUMBER AND WORDING.		
B. RECOMMENDATIONS FOR CORRECTING THE DEFICIENCIES		
2. COMMENTS ON ANY SPECIFICATION REQUIREMENT CONSIDERED TOO RIGID		
3. IS THE SPECIFICATION RESTRICTIVE?		
<input type="checkbox"/> YES <input type="checkbox"/> NO IF "YES", IN WHAT WAY?		
4. REMARKS (Attach any pertinent data which may be of use in improving this specification. If there are additional papers, attach to form and place both in an envelope addressed to preparing activity)		
SUBMITTED BY (Printed or typed name and activity)		DATE

DD FORM 1426
1 OCT 64

FOLD

DEPARTMENT OF THE ARMY
U. S. Army Natick Laboratories
Natick, Massachusetts 01762

POSTAGE AND FEES PAID
DEPARTMENT OF THE ARMY

OFFICIAL BUSINESS

Commanding General
U. S. Army Natick Laboratories
ATTN: AMXRE-SS
Natick, Massachusetts 01762

FOLD

)
"to detach this form, cut along this line"
)