

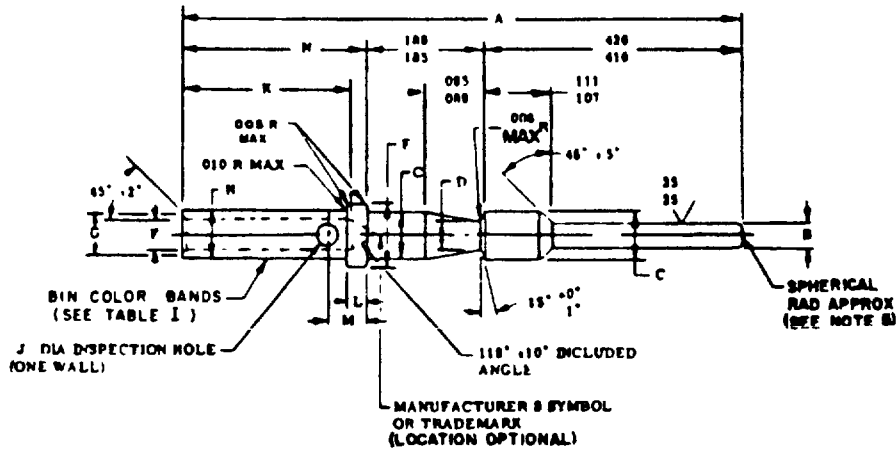
MIL-C-39029/31B
 25 April 1980
 SUPERSEDING
 MIL-C-39029/31A
 26 April 1978

MILITARY SPECIFICATION SHEET

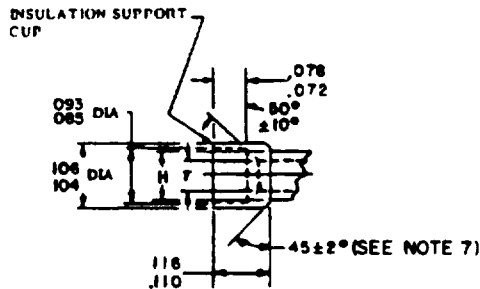
CONTACTS, ELECTRICAL CONNECTOR,
 PIN, CRIMP REMOVABLE, (FOR
 MIL-C-26482 SERIES 1, MIL-C-26500 AND
 MIL-C-26518 CONNECTORS)

This specification is approved for use by all Departments and Agencies of the Department of Defense.

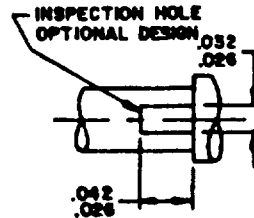
The complete requirements for procuring the contacts described herein shall consist of this document and the latest issue of Specification MIL-C-39029.



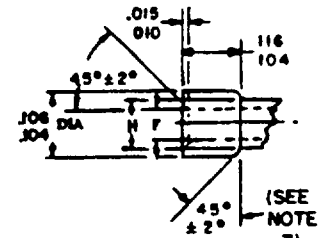
WIRE BARREL DESIGN FOR BIN CODE 228 THRU 233 (SIZE 16 and 12 CONTACTS)



WIRE BARREL DESIGN
 BIN CODES 240 & 241
 SIZE 20 CONTACT



WIRE BARREL DESIGN BIN CODES 223 THRU 227
 SIZE 20 CONTACTS



WIRE BARREL DESIGN
 BIN CODE 448
 SIZE 20 CONTACTS

(B) FIGURE 1 Pin contacts

FSC 5935

(B) Denotes changes
 Page 1 of 5

MIL-C-39029/318

Ⓟ TABLE I Dimensions

BIN code	A REF	B DIA	C DIA	D DIA	E DIA	F DIA	G DIA	H DIA	J DIA	K	L	M	N
224, 225, 226 and 227 223	915 (23 24)	041	078	052	103 (2 62)	050	064	078	032	270	033	063	308
		039	076	048	100 (2 54)	048	.060	076	026	250	029	053	304
228, 229, 230, 231, 232 and 233	905 (22 99)	0635	113	087	148 (3 76)	068	092	105	042	281	048	079	298
		0615	110	083	144 (3 66)	066	080	101	036	236	044	073	294
234, 235, 236, 237, 238 and 239	905 (22 99)	095	161	135	202 (5 13)	102	135	153	042	281	048	079	298
		093	158	131	198 (5 03)	098	116	.147	036	236	044	073	294
240, 241 and 448	915 (23 24)	041	078	052	103 (2 62)	050	---	078	032	298	033	063	308
		039	076	048	100 (2 54)	048	---	076	026	267	029	053	304

INCHES	MM	INCHES	MM	INCHES	MM	INCHES	MM
003	08	053	1 35	089	2 26	147	3 73
005	13	060	1 52	092	2 34	.153	3 89
006	15	0615	1 560	093	2 36	158	4 01
010	25	063	1 60	.095	2 41	161	4 09
015	38	0635	1.610	098	2 49	185	4 70
026	66	064	1 63	101	2 57	189	4 80
029	.74	066	1 68	.102	2 59	.236	5 99
032	81	068	1 73	104	2 64	250	6 35
033	84	072	1 83	105	2 67	267	6 78
036	91	073	1 85	106	2 69	270	6 86
039	99	076	1 93	.107	2 72	281	7 14
041	1 04	.078	1.98	.110	2.79	294	7 47
042	1 07	079	2 01	.111	2.82	298	7.57
044	1 12	080	2 03	.113	2 87	304	7 72
.048	1 22	.083	2 11	.116	2 95	308	7.82
050	1 27	085	2 16	.131	3 33	.418	10.62
052	1 32	087	2 21	135	3 43	426	10 82

NOTES

- 1 Dimensions are in inches
- 2 Metric equivalents are given for general information only and are based upon 1 00 inch = 25 4 mm
- 3 Metric equivalents are in parentheses for overall length and diameter only
- 4 Dimensions shown apply after plating
- 5 Spherical end dimension to comply with MIL-C-39029A
- Ⓟ 6 Contacts (Class A) are shipped for MIL-C-26482, series 1 connectors
Contacts (Class B) are shipped for MIL-C-26500 connectors
- 7 Optional requirement of 036/026 radius may be used as a substitute

FIGURE 1 Pin contacts - Continued

TABLE II Design characteristics

BIN code	Color bands			Mating end size	Wire bar- rel size	Type	Class
	1st	2nd	3rd				
223	Red	Red	Orange	20	20	A	A
224	Red	Red	Yellow	20	20	C-iron	A
225	Red	Red	Green	20	20	C-chromel	A
226	Red	Red	Blue	20	20	C-alumel	A
227	Red	Red	Violet	20	20	C-constantan	A
228	Red	Red	Gray	16	16	A	A
229	Red	Red	White	16	16	A	B
230	Red	Orange	Black	16	16	C-iron	A
231	Red	Orange	Brown	16	16	C-chromel	A
232	Red	Orange	Red	16	16	C-alumel	A
233	Red	Orange	Orange	16	16	C-constantan	A
234	Red	Orange	Yellow	12	12	A	A
235	Red	Orange	Green	12	12	A	B
236	Red	Orange	Blue	12	12	C-iron	A
237	Red	Orange	Violet	12	12	C-chromel	A
238	Red	Orange	Gray	12	12	C-alumel	A
239	Red	Orange	White	12	12	C-constantan	A
240	Red	Yellow	Black	20	20	A	A
241	Red	Yellow	Brown	20	20	A	B
448	Yellow	Yellow	Gray	20	20	A	B

MIL-C-39029/318

REQUIREMENTS

Dimensions, design characteristics, and configuration See figure 1 and table I

Tools See table III

- ⓑ Vibration Class A contacts per Method 2005 of MIL-STD-1344, test condition III, class B contacts, test condition IV, duration of test at extreme temperatures shall be 25 percent of that specified for the standard temperature condition
- ⓑ Shock (specified pulse) Class A contacts per Method 2004 of MIL-STD-1344, test condition A, class B contacts, test condition C

TABLE III Tools

ⓑ

BIN code	Basic crimping tool	Positioner	Installing tool	Removal tool
223, 224, 225 226, and 227	M22520/7-01 M22520/1-01 M22520/2-01	M22520/7-02 M22520/1-02 Red M22520/2-02	MB1969/17-03 MB1969/14-02	MB1969/19-07
228, 229, 230 231, 232, and 233	M22520/1-01 M22520/7-01	M22520/1-02 Blue M22520/7-03	MB1969/17-04 MB1969/14-03	MB1969/19-08
234, 235, 236 237, 238, and 239	M22520/1-01	M22520/1-02 Yellow	MB1969/17-05 MB1969/14-04	MB1969, 19-09
240, 241, and 448	M22520/7-01 M22520/1-01 M22520/2-01	M22520/7-02 M22520/1-02 Red M22520/2-02	MB1969/17-03 MB1969/14-02	MB1969/19-07

Mating contact MIL-C-39029/32

Plating Contact plating shall be in accordance with MIL-C-39029 except, rhodium plated contacts shall have a minimum of thirty microinches of rhodium plate over three hundred microinches of silver plate or one hundred fifty microinches of nickel plate. Rhodium plated contacts can be used provided they were manufactured and date coded prior to 2 January 1978.

QPL evaluating activity Naval Avionics Center, Code D-914, Indianapolis, Indiana 46218

International interest NEPR 57

Military part number See table IV

(B) TABLE IV Military part number

BIN code	Military part number	Supersedes
223	M39029/31-223	MS3192-20-20A
224	M39029/31-224	MS3192-20-20C4
225	M39029/31-225	MS3192-20-20C1
226	M39029/31-226	MS3192-20-20C2
227	M39029/31-227	MS3192-20-20C3
228	M39029/31-228	MS3192-16-16A
229	M39029/31-229	MS24254-16P
230	M39029/31-230	MS3192-16-16C4
231	M39029/31-231	MS3192-16-16C1
232	M39029/31-232	MS3192-16-16C2
233	M39029/31-233	MS3192-16-16C3
234	M39029/31-234	MS3192-12-12A
235	M39029/31-235	MS24254-12P
236	M39029/31-236	MS3192-12-12C4
237	M39029/31-237	MS3192-12-12C1
238	M39029/31-238	MS3192-12-12C2
239	M39029/31-239	MS3192-12-12C3
240	M39029/31-240	MS3192A20-20A
241	M39029/31-241	MS24254-20P
448	M39029/31-448	MS39029/31-20-20

Custodians
 Army - CR
 Navy - AS
 Air Force - 85

Review activities
 Army - AR, MI
 Navy - EC, SH, MC
 Air Force - 11, 17, 99
 DLA - ES

User activities
 Army -

Navy - OS, MC
 Air Force -

Preparing activity
 Navy - AS

Agent
 DLA - ES

(Project 5935-3097-5)

INSTRUCTIONS In a continuing effort to make our standardization documents better, the DoD provides this form for use in submitting comments and suggestions for improvements. All users of military standardization documents are invited to provide suggestions. This form may be detached, folded along the lines indicated, taped along the loose edge (*DO NOT STAPLE*), and mailed. In block 5, be as specific as possible about particular problem areas such as wording which required interpretation, was too rigid, restrictive, loose, ambiguous, or was incompatible, and give proposed wording changes which would alleviate the problems. Enter in block 6 any remarks not related to a specific paragraph of the document. If block 7 is filled out, an acknowledgement will be mailed to you within 30 days to let you know that your comments were received and are being considered.

NOTE This form may not be used to request copies of documents, nor to request waivers, deviations, or clarification of specification requirements on current contracts. Comments submitted on this form do not constitute or imply authorization to waive any portion of the referenced document(s) or to amend contractual requirements.

(Fold along this line)

(Fold along this line)

DEPARTMENT OF THE NAVY



NO POSTAGE
NECESSARY
IF MAILED
IN THE
UNITED STATES

OFFICIAL BUSINESS
PENALTY FOR PRIVATE USE \$300

BUSINESS REPLY MAIL
FIRST CLASS PERMIT NO 12503 WASHINGTON D C

POSTAGE WILL BE PAID BY THE DEPARTMENT OF THE NAVY

Commanding Officer
Naval Air Engineering Center
Engineering Specifications & Standards
Department (ESSD) Code 93
Lakehurst, NJ 08733



STANDARDIZATION DOCUMENT IMPROVEMENT PROPOSAL

(See Instructions - Reverse Side)

1 DOCUMENT NUMBER	2 DOCUMENT TITLE
3a. NAME OF SUBMITTING ORGANIZATION	4 TYPE OF ORGANIZATION <i>(Mark one)</i> <input type="checkbox"/> VENDOR <input type="checkbox"/> USER <input type="checkbox"/> MANUF / CTURER <input type="checkbox"/> OTHER <i>(Specify)</i> _____
b ADDRESS <i>(Street City State ZIP Code)</i>	
5 PROBLEM AREAS	
a. Paragraph Number and Wording	
b. Recommended Wording	
c. Reason/Rationale for Recommendation	
6 REMARKS	
7a NAME OF SUBMITTER <i>(Last First MI) - Optional</i>	b WORK TELEPHONE NUMBER <i>(Include Area Code) - Optional</i>
c MAILING ADDRESS <i>(Street City State ZIP Code) - Optional</i>	8 DATE OF SUBMISSION <i>(YYMMDD)</i>

(TO DETACH THIS FORM, CUT ALONG THIS LINE)