

This amendment forms a part of Military Specification MIL-C-21617(SHIPS), 23 January 1959.

Page 4, table II: Add "Inch" at the top of columns A, B, C, D and E.

Page 6, paragraph 3.6.3, line 1: Add at beginning of sentence "(Not applicable to style 007C and 016C)".

Page 22, table IX, type JM032A: Add "3 size" before "16" and "29 size" before "20".

Page 23, figure 14: Delete and substitute:

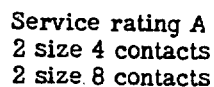


Figure 14 - Style 004A.

FSC 5935

Pages 34 through 42, figures 24 through 32: Delete and substitute:

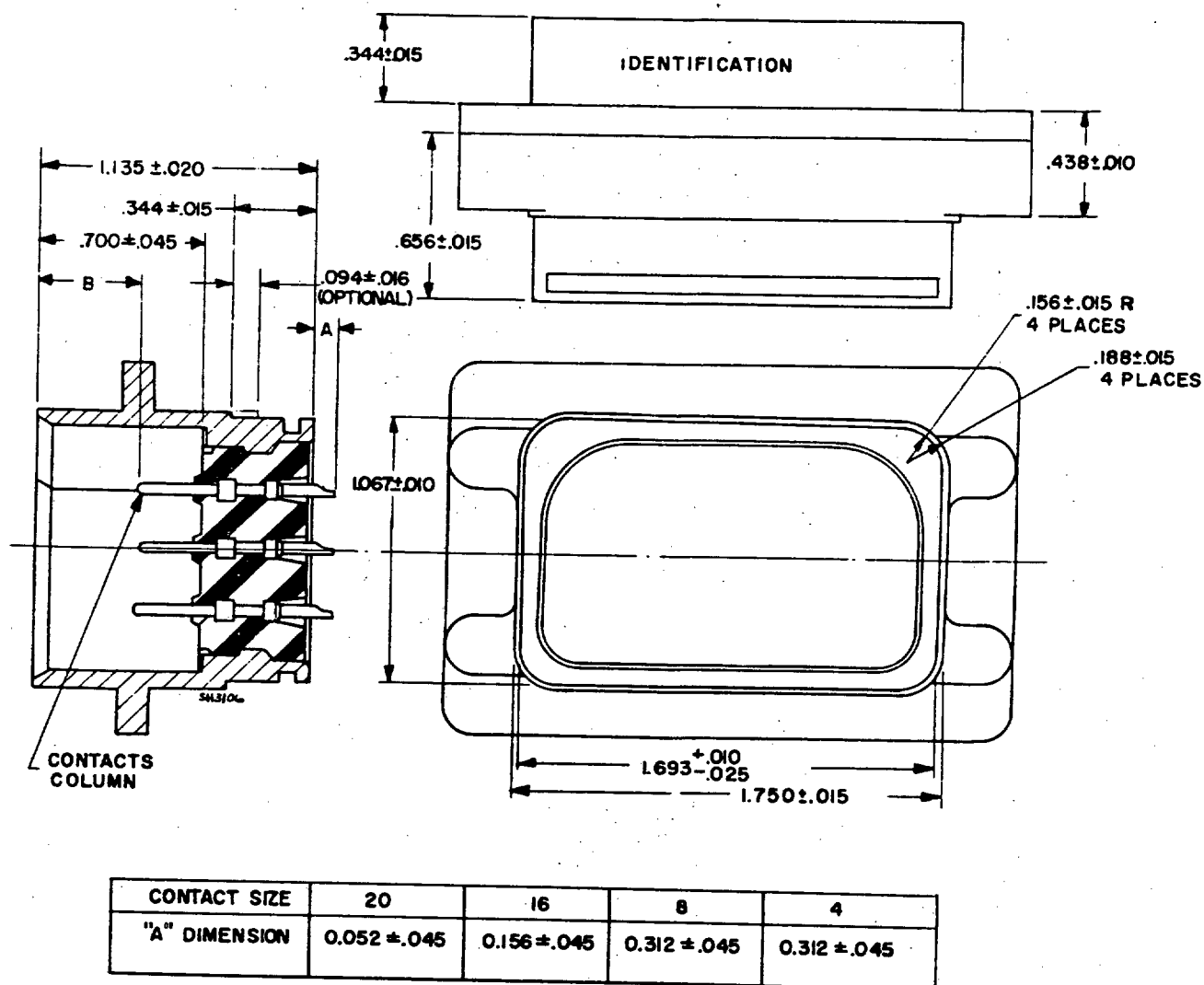
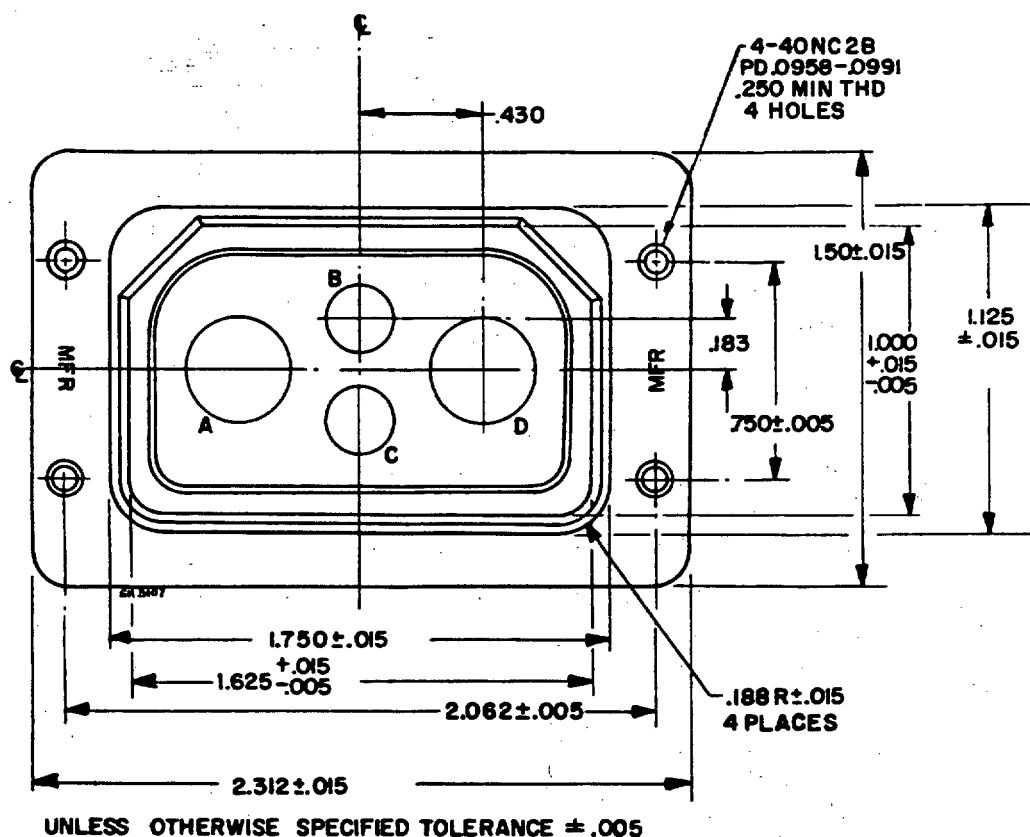


Figure 24 - Type JS, class M.

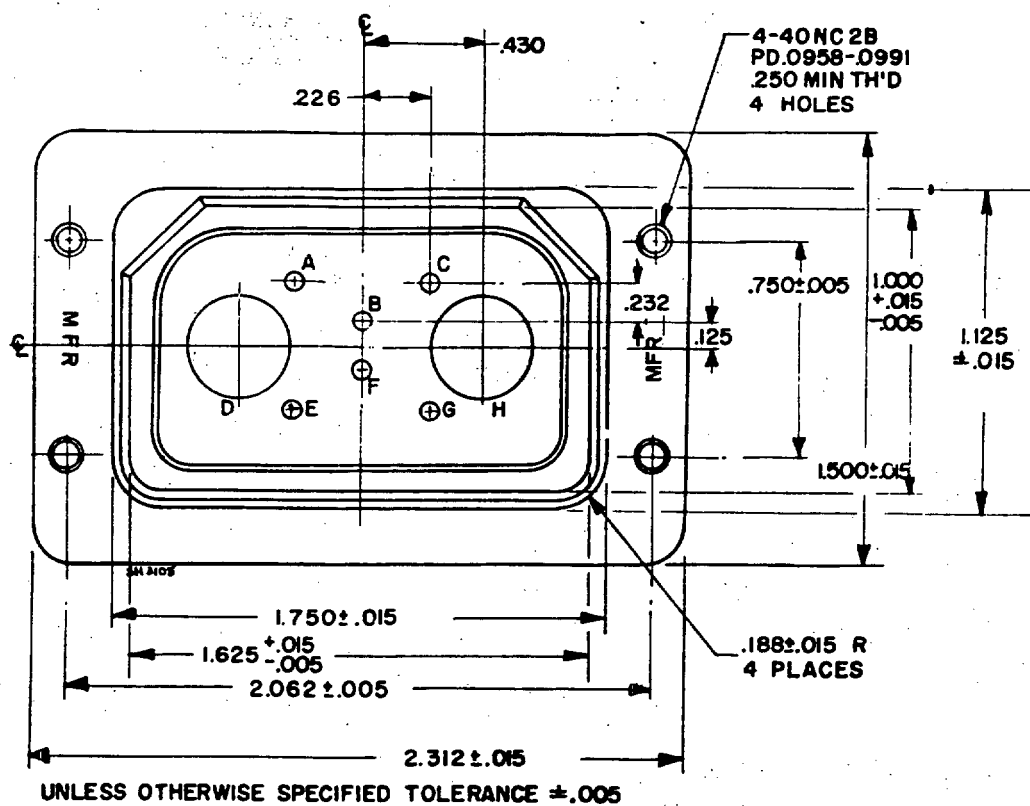
MIL-C-21617(SHIPS)
AMENDMENT - 1



Service rating A
2 size 4 contacts
2 size 8 contacts

Figure 25 - Style 004A.

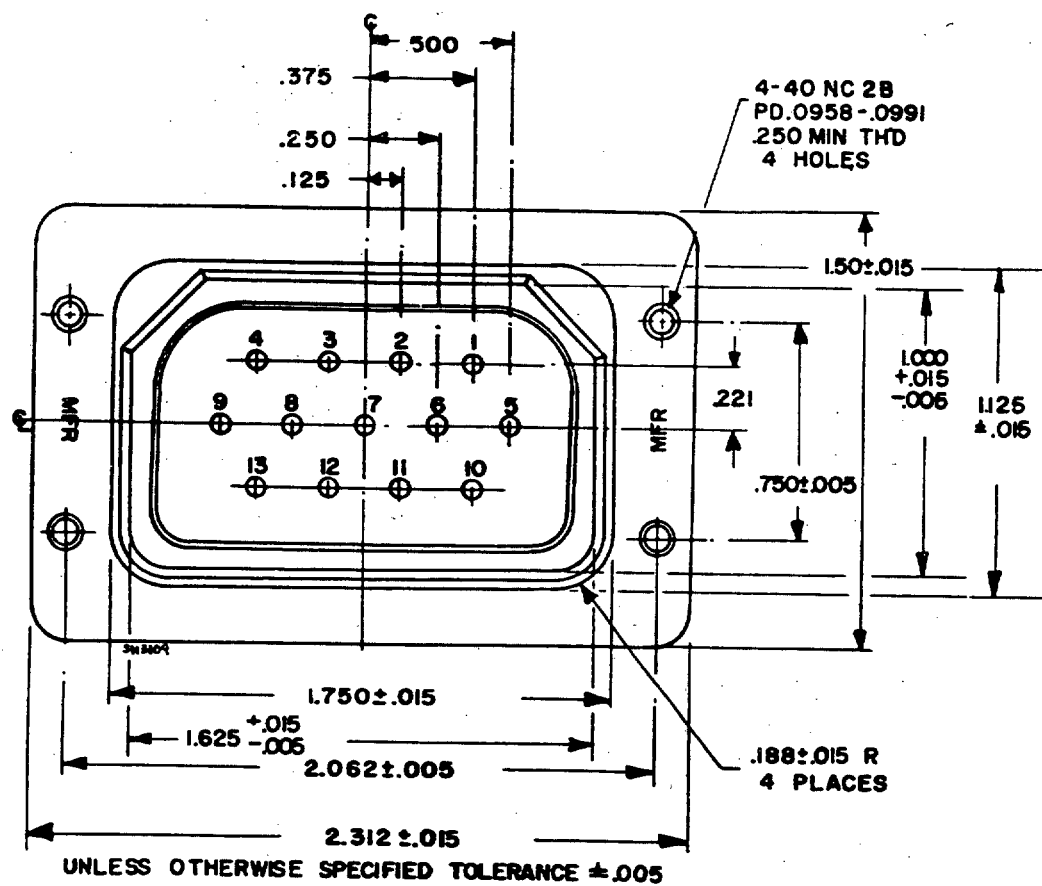
MIL-C-21617(SHIPS)
AMENDMENT - 1



Contacts B and F - service rating D
All others - service rating A
2 size 8 contacts
6 size 16 contacts

Figure 26 - Style 008A.

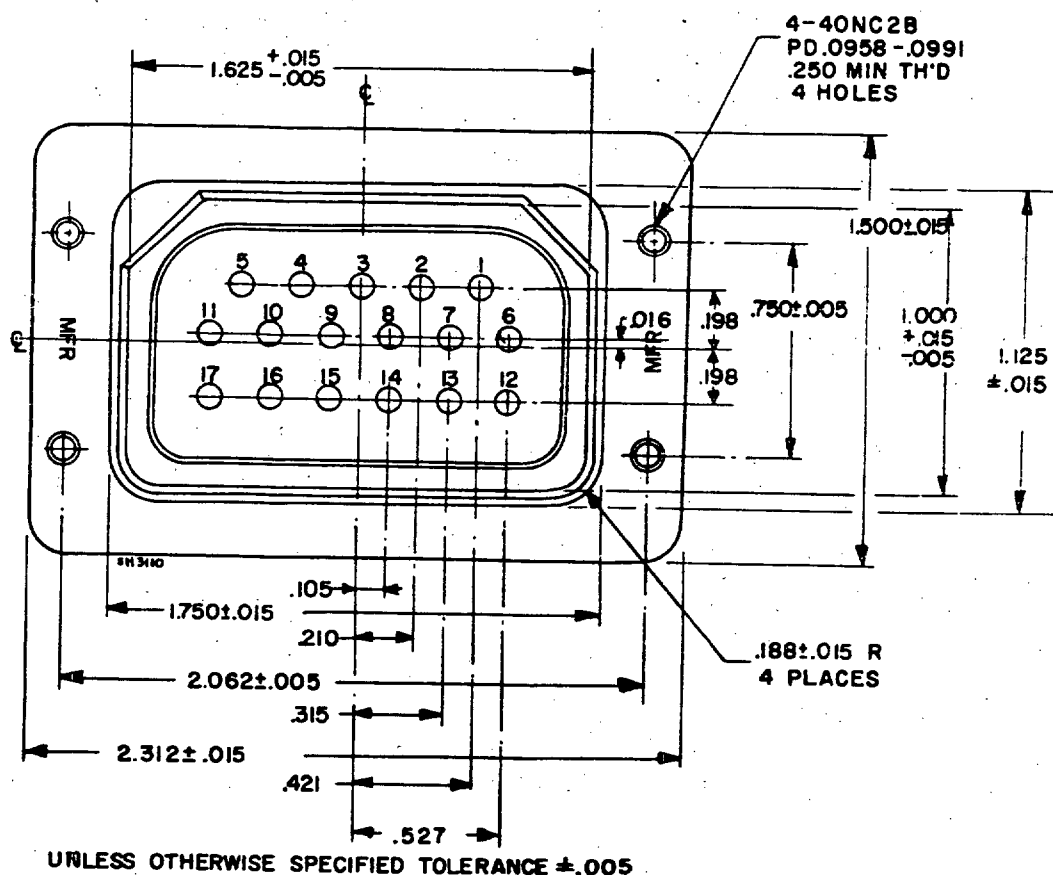
MIL-C-21617(SHIPS)
AMENDMENT - 1



Service rating D
13 size 16 contacts

Figure 27 - Style 013A.

MIL-C-21617(SHIPS)
AMENDMENT - 1

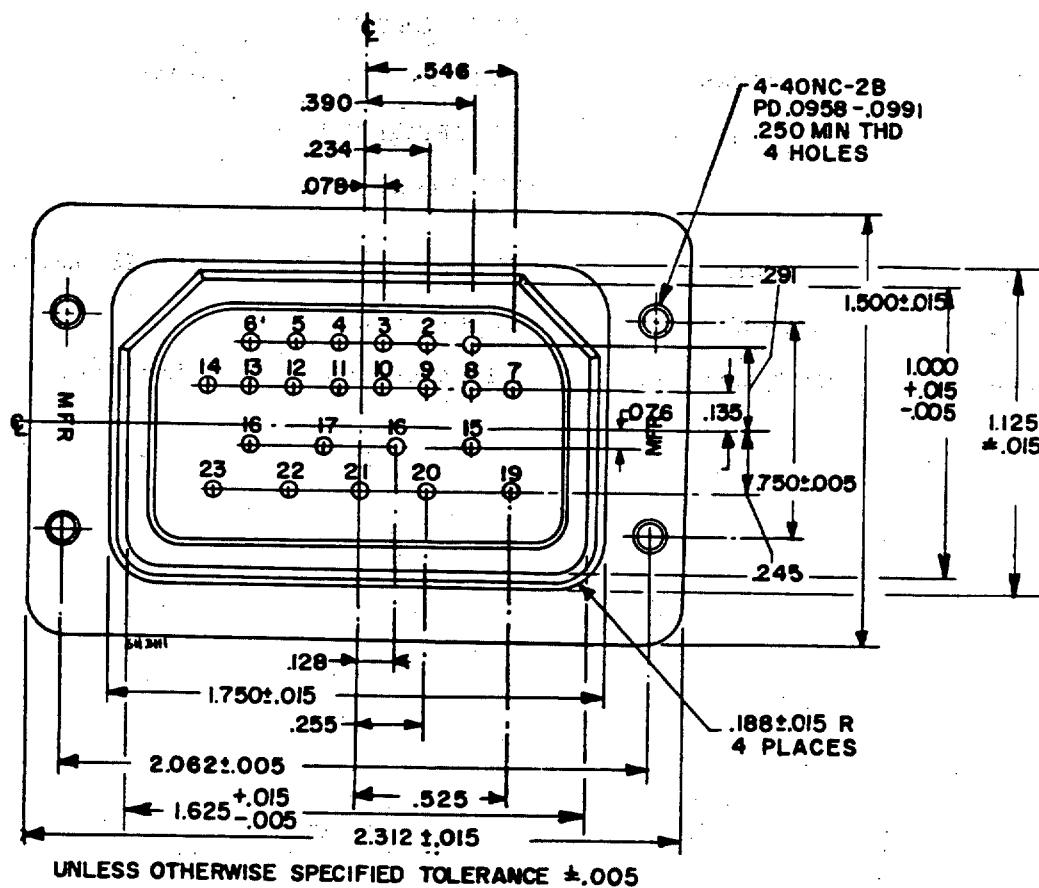


UNLESS OTHERWISE SPECIFIED TOLERANCE $\pm .005$

Service rating D
17 size 20 contacts

Figure 28 - Style 017A.

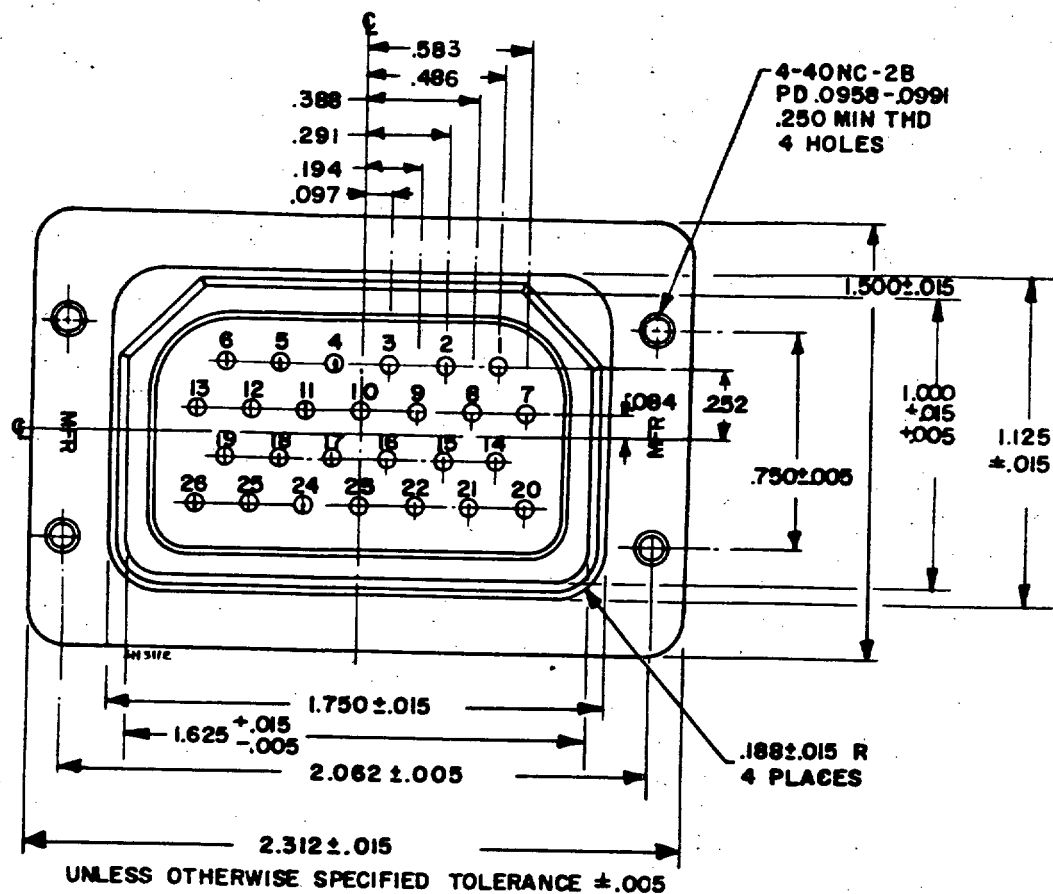
MIL-C-21617(SHIPS)
AMENDMENT - 1



Contacts 1 through 14 - service rating A
Contacts 15 through 23 - service rating D
23 size 20 contacts

Figure 29 - Style 023A.

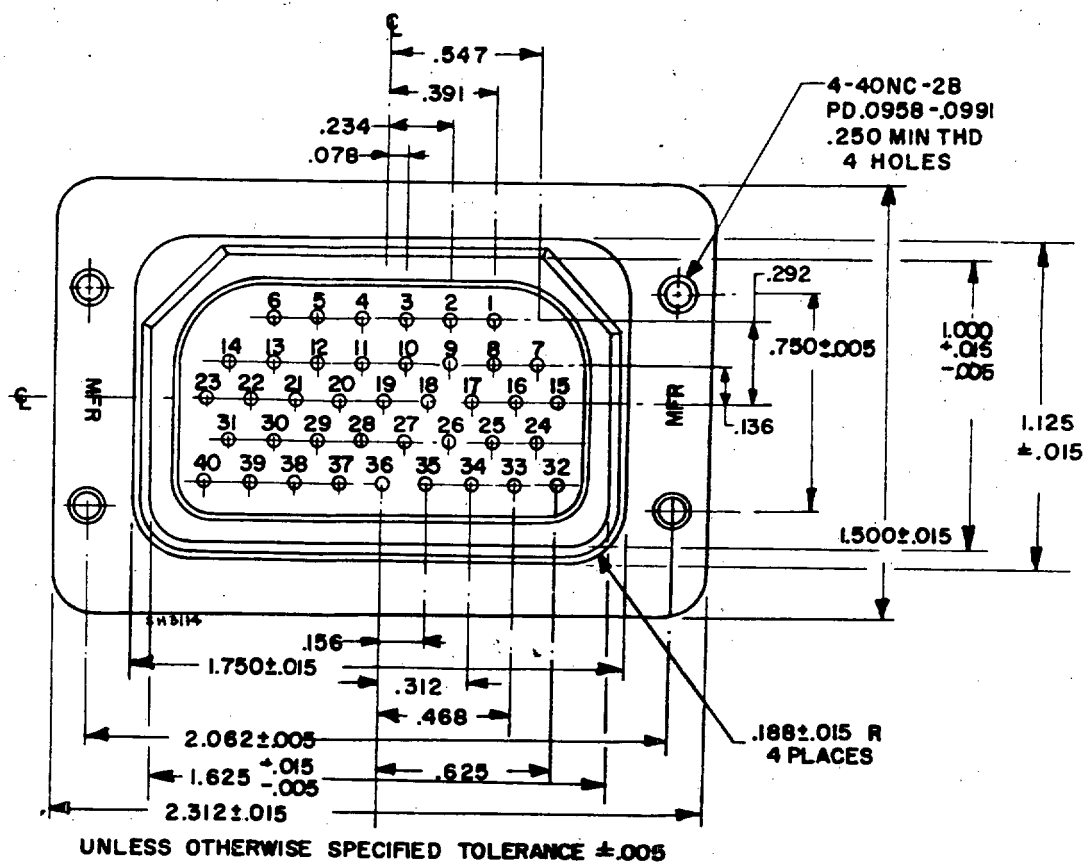
MIL-C-21617(SHIPS)
AMENDMENT - 1



Service rating A
26 size 16 contacts

Figure 30 - Style 026A.

MIL-C-21617(SHIPS)
AMENDMENT - 1



Service rating A
40 size 20 contacts

Figure 32 - Style 040A.

Page 54, paragraph 6.1.3, line 1: Delete "inteded" and substitute "intended".

Preparing activity:
Navy - Bureau of Ships
(Project 5935-0007Sh)