

INCH-POUND

MIL-PRF-32052/2(CR)

7 December 1999

PERFORMANCE SPECIFICATION SHEET

BATTERY, RECHARGEABLE, SEALED, BB-XX60/U

This specification sheet is approved for use by the U. S. Army CECOM, Department of the Army, and is available for use by all Departments and Agencies of the Department of Defense.

The requirements for acquiring the product described herein shall consist of this specification sheet and the issue of the following specification listed in that issue of the Department of Defense Index of Specifications and Standards (DODISS) specified in the solicitation: MIL-PRF-32052.

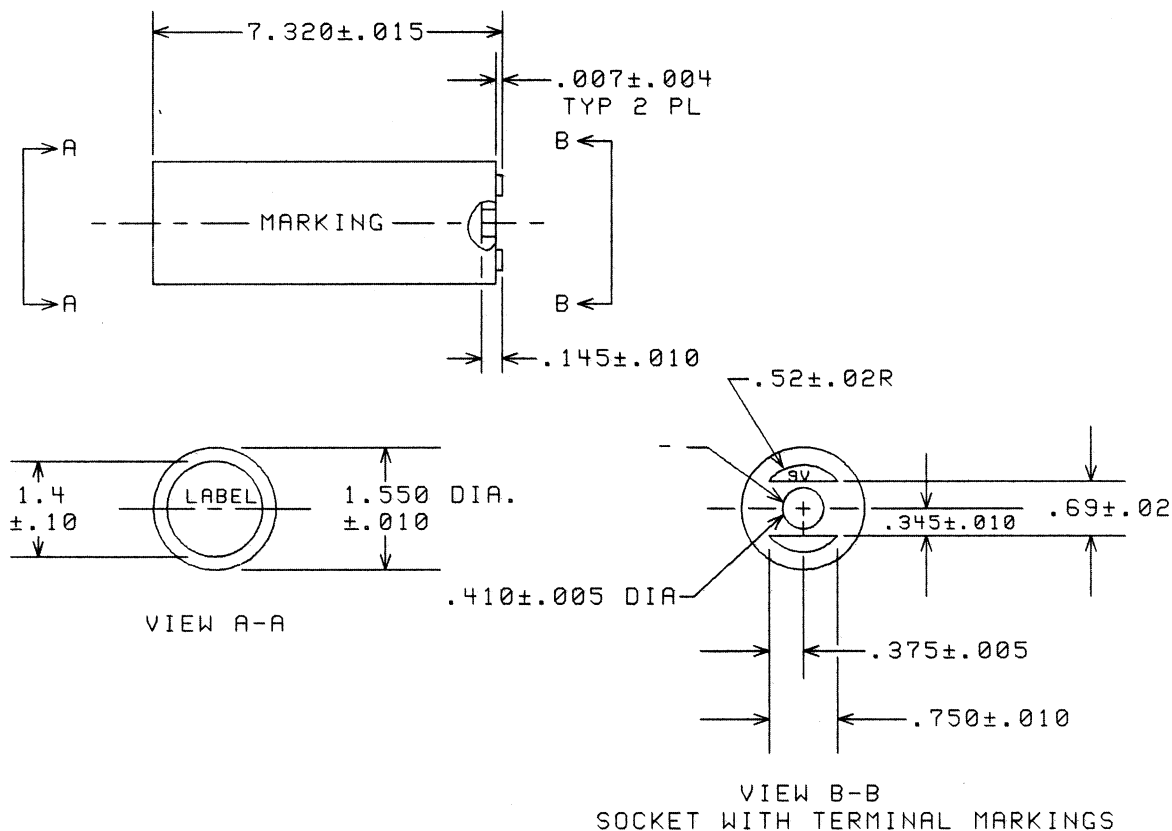


Figure 1. Battery dimensions.

MIL-PRF-32052/2(CR)

NOTES:

1. All dimensions are in inches. The tolerance shall be ± 0.031 inch unless otherwise specified.
2. The battery case shall be fabricated in such a way as to allow cell venting upon provocation without rupture.
3. The battery terminals shall consist of two raised crescent-shaped (positive) terminals surrounding one central, recessed disc (negative) terminal. All terminals are integral with one end of battery (see Figure 1).
4. Stencil (or equivalent) schematic, identification and charging instructions as shown.
5. Manufacturer must fill in applicable information in parenthesis. Location is optional.
6. Pressure relief valve location is optional. It shall release gas before case damage is incurred. It shall not permit the entry of liquid into the battery case.
7. All connectors included socket terminal and charging connector if require shall retain full function after 500 insertions and 500 withdrawals.
8. State of charge indicator on any surface. State of charge interpretation shall be clearly marked on the battery.
9. Distinctive markings are required, dependent upon chemistry.

REQUIREMENTS:

Dimensions and configuration: See figure 1.

Rated capacity (C/2): 4.0 AH.

Voltage (Nominal): 9.0 Volts.

Maximum Voltage: 12.3 volts.

Weight (Maximum): 11.5 OZ (325 grams)..

Charge rate for testing
and on battery (C/2 for 2-3 hrs) : 2 amps minimum.
or when permitted, per 4.7.1.2

MIL-PRF-32052/2(CR)

<u>Discharge Rates</u>	<u>Final Voltage(V)</u>	<u>Current or Power (Amps/ Watts)</u>
-----	6.0	3.0 Watts
C/5	6.0	0.72 Amps
----	6.0	10 Watts
1.5C ₅	6.0	6.0 Amps
C/2	6.0	2.0 Amps

<u>Test</u>	<u>Discharge Rate</u>	<u>Capacity Requirement (AH/ WH)</u>
Full Capacity Discharge	2 amperes	4.2 AH
Cycle Life, 224 cycles	2 amperes	3.7 AH
Overcharge, 24 hours	2 amperes	4.2 AH
High Rate Discharge	6 amps	3.0 AH
High Temp Capacity, 50 °C	2 amperes	4.2 AH
Low Temperature Discharge at - 20°C (-18°F)	2 amperes	3.0 AH
Retention of Charge 7 days at 50° C (122°F)	2 amperes	3.7 AH
High Rate Pulse		
2.9 Minutes	10 watts	23 WH
7.1 Minutes	3 watts	
Vibration	0.72 amp	4.5 AH

NOTES - 1. Unless otherwise specified, all values are minimum.
 2. All charges and discharges shall be performed on fully assembled batteries through the terminals.
 3. All the discharge current are fixed at the specific rate regardless the rated capacity of the battery.

CONCLUDING MATERIAL:

CUSTODIAN:
 Army - CR

PREPARING ACTIVITY:
 Army - CR

(PROJECT 6140-A913-02)