

INCH-POUND

MIL-PRF-8932/4A

27 August 1998

SUPERSEDING

MIL-S-8932/4

12 August 1980

PERFORMANCE SPECIFICATION SHEET

SWITCHES, PRESSURE, BULKHEAD MOUNTED, AIRCRAFT, APPROXIMATE
GAUGE, CLASS 4

This specification is approved for use by all Departments and Agencies of the Department of Defense.

The requirements for acquiring the product described herein shall consist of this specification sheet and MIL-PRF-8932.

REQUIREMENTS:

1. Dimensions, operating pressure ranges, and tolerances. The dimensions, operating pressure ranges, and tolerances shall be as specified in table I.
2. Pressure switch port designations. Each approximate gauge pressure switch shall have one pressure port as shown on figure 1 of MIL-PRF-8932. The designation letter "P" (see figures 1 and 2) shall be stamped next to the connection port. The switch, which requires a case pressure release (CPR) valve shall be marked with the letters "CPR" permanently and legibly stamped on the switch case directly adjacent to the switch's case pressure valve.
3. Superseding part numbers. The canceled part numbers and the corresponding superseding part numbers are as shown in table II.
4. Intended use. The pressure switches covered by this specification are used in the production and maintenance of F-18 military aircraft. These aircraft are exposed for prolonged periods to extreme seagoing environments not encountered by commercial aircraft.
5. Changes from previous issue. Marginal notations are not used in this revision to identify changes with respect to previous issue due to the extent of the changes.

MIL-PRF-8932/4A

TABLE I. Dimensions, operating pressure ranges, and tolerances.

Dash no.	Potential operating range PSI	Normal system pressure PSI	Tolerances \pm PSI	Max. AC current amperes	Max. DC current amperes	Max. weight Lbs	Schematic figure	Dim K inch Max	Dim L inch	Dim W inch
-33H	0.50-4.50	5	.25	5.00	3.00	1.25	1	2.312	4.400	2.300
-34H	0.50-4.50	5	.25	5.00	3.00	1.50	2	2.312	4.400	2.300
-39H	1.0-9.0	10	.49	5.00	3.00	1.25	1	2.312	4.400	2.300
-40H	1.0-9.0	10	.49	5.00	3.00	1.50	2	2.312	4.400	2.300
-43H	2.0-18.0	20	.94	5.00	3.00	1.25	1	1.344	3.700	1.200
-44H	2.0-18.0	20	.94	5.00	3.00	1.50	2	2.312	4.400	2.300
-47H	4.0-36.0	40	1.70	8.00	4.00	1.25	1	1.344	3.700	1.200
-48H	4.0-36.0	40	1.70	8.00	4.00	1.50	2	2.312	4.400	2.300
-51H	6.0-54.0	60	2.40	8.00	4.00	1.25	1	1.344	3.700	1.200
-52H	6.0-54.0	60	2.40	8.00	4.00	1.50	2	2.312	4.400	2.300
-53H	8.0-72.0	80	2.80	8.00	4.00	1.00	1	1.344	3.700	1.200
-54H	8.0-72.0	80	2.80	8.00	4.00	1.25	2	2.312	4.400	2.300
-55H	10.0-90.0	100	3.10	10.00	5.00	1.00	1	1.531	5.300	1.000
-56H	10.0-90.0	100	3.10	10.00	5.00	1.25	2	1.344	3.700	1.200
-59H	20.0-180.0	200	4.20	10.00	5.00	1.00	1	1.531	5.300	1.000
-60H	20.0-180.0	200	4.20	10.00	5.00	1.25	2	1.344	3.700	1.200

MIL-PRF-8932/4A

TABLE I. Dimensions, operating pressure ranges, and tolerances - Continued.

Dash no.	Potential operating range PSI	Normal system pressure PSI	Tolerances \pm PSI	Max. AC current amperes	Max. DC current amperes	Max. weight Lbs	Schematic figure	Dim K Inch Max	Dim L inch	Dim W inch
-63H	20.0-225.0	250	4.50	10.00	5.00	1.00	1	1.531	5.300	1.000
-64H	20.0-225.0	250	4.50	10.00	5.00	1.25	2	1.344	3.700	1.200
-65H	25.0-450.0	500	8.00	10.00	5.00	1.00	1	1.531	5.300	1.000
-66H	25.0-450.0	500	8.00	10.00	5.00	1.25	2	1.344	3.700	1.200
-73H	300.0-675.0	750	10.0	10.00	5.00	1.00	1	1.531	5.300	1.000
-74H	300.0-675.0	750	10.0	10.00	5.00	1.25	2	1.344	3.700	1.200
-75H	500.0-900.0	1000	15.0	10.00	5.00	1.00	1	1.531	5.300	1.000
-76H	500.0-900.0	1000	15.0	10.00	5.00	1.25	2	1.344	3.700	1.200
-77H	500.0-1350.0	1500	18.0	12.00	7.00	1.00	1	1.531	5.300	1.000
-78H	500.0-1350.0	1500	18.0	12.00	7.00	1.25	2	1.344	3.700	1.200
-79H	750.0-1800.0	2000	20.0	12.00	7.00	1.00	1	1.531	5.300	1.000
-80H	750.0-1800.0	2000	20.0	12.00	7.00	1.25	2	1.344	3.700	1.200
-81H	1000.0-2250.0	2500	23.0	15.00	10.00	1.00	1	1.531	5.300	1.000
-82H	1000.0-2250.0	2500	23.0	15.00	10.00	1.25	2	1.344	3.700	1.200
-83H	1800.0-2700.0	3000	25.0	15.00	10.00	1.00	1	1.531	5.300	1.000
-84H	1800.0-2700.0	3000	25.0	15.00	10.00	1.25	2	1.344	3.700	1.200
-85H	1000.0-2700.0	3000	30.0	15.00	10.00	1.00	1	1.531	5.300	1.000
-86H	1000.0-2700.0	3000	30.0	15.00	10.00	1.25	2	1.344	3.700	1.200
-87H	2000.0-4050.0	4500	50.0	15.00	10.00	1.00	1	1.531	5.300	1.000
-88H	2000.0-4050.0	4500	50.0	15.00	10.00	1.25	2	1.344	3.700	1.200

MIL-PRF-89323/4A

TABLE II. Superseding part numbers.

Superseded part number.	Canceled part number.	Superseded part number.	Canceled part number.
M8932/4-33H	MS25276-33H	M8932/4-63H	MS25276-63H
M8932/4-34H	MS25276-34H	M8932/4-64H	MS25276-64H
		M8932/4-65H	MS25276-65H
M8932/4-39H	MS25276-39H	M8932/4-66H	MS25276-66H
M8932/4-40H	MS25276-40H		
		M8932/4-73H	MS25276-73H
M8932/4-43H	MS25276-43H	M8932/4-74H	MS25276-74H
M8932/4-44H	MS25276-44H	M8932/4-75H	MS25276-75H
		M8932/4-76H	MS25276-76H
M8932/4-47H	MS25276-47H	M8932/4-77H	MS25276-77H
M8932/4-48H	MS25276-48H	M8932/4-78H	MS25276-78H
		M8932/4-79H	MS25276-79H
M8932/4-51H	MS25276-51H	M8932/4-80H	MS25276-80H
M8932/4-52H	MS25276-52H	M8932/4-81H	MS25276-81H
M8932/4-53H	MS25276-53H	M8932/4-82H	MS25276-82H
M8932/4-54H	MS25276-54H	M8932/4-83H	MS25276-83H
M8932/4-55H	MS25276-55H	M8932/4-84H	MS25276-84H
M8932/4-56H	MS25276-56H	M8932/4-85H	MS25276-85H
		M8932/4-86H	MS25276-86H
M8932/4-59H	MS25276-59H	M8932/4-87H	MS25276-87H
M8932/4-60H	MS25276-60H	M8932/4-88H	MS25276-88H

MIL-PRF-8932/4A

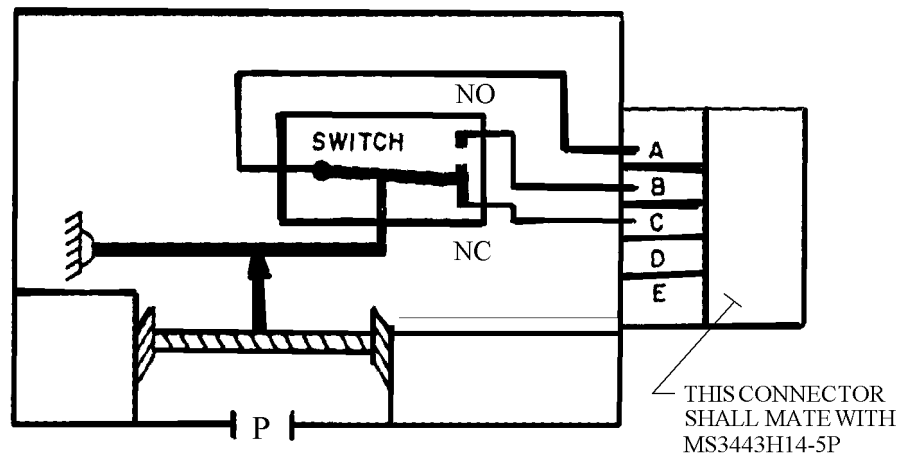


FIGURE 1. Approximate gauge pressure switch schematic, pressure port open.

(2 CONTACTS)

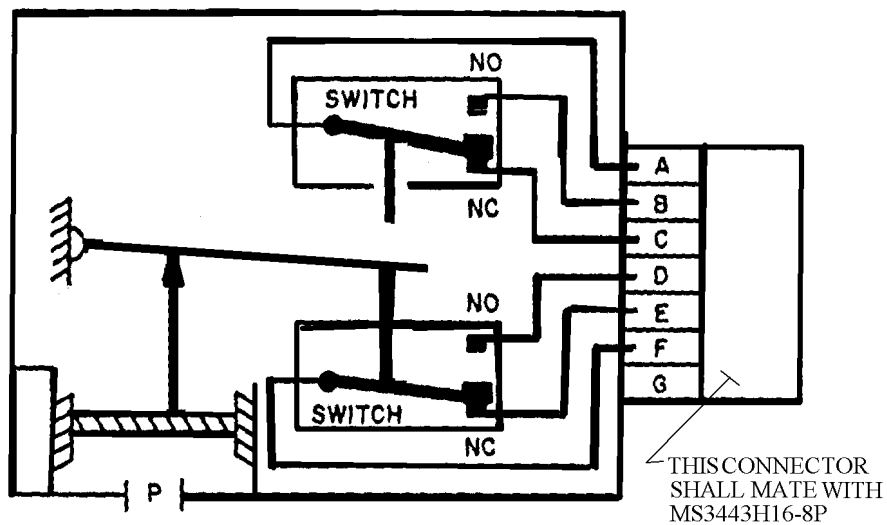


FIGURE 2. Approximate gauge pressure switch schematic, pressure port open.

(4 CONTACTS)

MIL-PRF-8932/4A

CONCLUDING MATERIAL

Custodians:

Army - AV

Navy - AS

Air Force - 99

Preparing activity:

Navy - AS

(Project 1650-0600)

Review activities:

Army - MI

Navy - MC

Air Force - 71

DLA-CC