

INCH-POUND

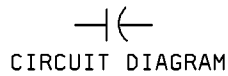
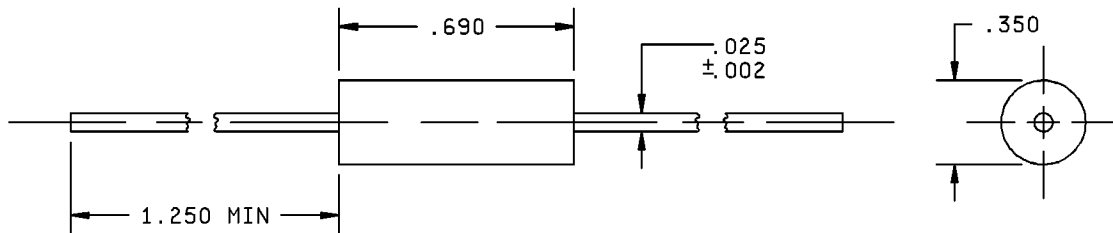
MIL-PRF-123/8B
18 June 2001
SUPERSEDING
MIL-PRF-123/8A(NA)
28 September 1994

PERFORMANCE SPECIFICATION SHEET

CAPACITORS, FIXED, CERAMIC DIELECTRIC,
(TEMPERATURE STABLE AND GENERAL PURPOSE),
HIGH RELIABILITY, LEADED, STYLE CKS16

This specification is approved for use by all Departments
and Agencies of the Department of Defense.

The requirements for acquiring the product described herein
shall consist of this specification and MIL-PRF-123.



Inches	mm
.002	0.05
.020	0.51
.025	0.64
.350	8.89
.690	17.53
1.250	31.75

NOTES:

1. Dimensions are in inches.
2. Metric equivalents are given for general information only.
3. Unless otherwise specified, tolerance is ±.020 inch.

FIGURE 1. Style CKS16 capacitors.

REQUIREMENTS:

Dimensions and configuration: See figure 1.

Case type: Tubular, molded, or preformed plastic encapsulated.

Lead wire: Termination W in accordance with MIL-PRF-123.

Capacitance value: See table I.

Capacitance tolerance: See table I.

Operating temperature: -55°C to +125°C.

Voltage rating: See table I.

Marking: In accordance with MIL-PRF-123, example 5.

TABLE I. Style CKS16 characteristics.

Part or Identifying Number (PIN) <u>1/</u>	Capacitance (pF)	Capacitance tolerance	Voltage-temperature limits	Rated voltage (volts)
M123A08BPC242-W	2,400	F, J, K	BP	100
M123A08BPC272-W	2,700	F, J, K	BP	100
M123A08BPC302-W	3,000	F, J, K	BP	100
M123A08BPC332-W	3,300	F, J, K	BP	100
M123A08BPC362-W	3,600	F, J, K	BP	100
M123A08BPC392-W	3,900	F, J, K	BP	100
M123A08BPC432-W	4,300	F, J, K	BP	100
M123A08BPC472-W	4,700	F, J, K	BP	100
M123A08BPC512-W	5,100	F, J, K	BP	100
M123A08BPC562-W	5,600	F, J, K	BP	100
M123A08BPC622-W	6,200	F, J, K	BP	100
M123A08BPC682-W	6,800	F, J, K	BP	100
M123A08BPC822-W	8,200	F, J, K	BP	100
M123A08BPC912-W	9,100	F, J, K	BP	100
M123A08BPC103-W	10,000	F, J, K	BP	100
M123A08BPB113-W	11,000	F, J, K	BP	50
M123A08BPB123-W	12,000	F, J, K	BP	50
M123A08BPB133-W	13,000	F, J, K	BP	50
M123A08BPB153-W	15,000	F, J, K	BP	50
M123A08BPB163-W	16,000	F, J, K	BP	50
M123A08BPB183-W	18,000	F, J, K	BP	50
M123A08BPB203-W	20,000	F, J, K	BP	50
M123A08BPB223-W	22,000	F, J, K	BP	50

See footnote at end of table.

TABLE I. Style CKS16 characteristics - Continued.

Part or Identifying Number (PIN) ^{1/}	Capacitance (pF)	Capacitance tolerance	Voltage-temperature limits	Rated voltage (volts)
M123A08BXC124KW	120,000	K	BX	100
M123A08BXC154KW	150,000	K	BX	100
M123A08BXC184KW	180,000	K	BX	100
M123A08BXC224KW	220,000	K	BX	100
M123A08BXC274KW	270,000	K	BX	100
M123A08BXC334KW	330,000	K	BX	100
M123A08BXC394KW	390,000	K	BX	100
M123A08BXC474KW	470,000	K	BX	100
M123A08BXB564KW	560,000	K	BX	50
M123A08BXB684KW	680,000	K	BX	50
M123A08BXB824KW	820,000	K	BX	50
M123A08BXB105KW	1,000,000	K	BX	50

^{1/} Complete PIN shall include an additional letter to indicate capacitance tolerance, if applicable.

Changes from previous issue. Marginal notations are not used in this revision to identify changes with respect to the previous issue due to the extent of the changes.

Custodians:
Navy - EC
Air Force - 19
DLA - CC
NASA - NA

Preparing activity:
DLA - CC
(Project 5910-2130-02)

Review activities:
Air Force - 11