

NOT MEASUREMENT SENSITIVE

MIL-HDBK-29612-3

30 July 1999

Supersedes

MIL-HDBK-1379-3

9 June 1997

## DEPARTMENT OF DEFENSE HANDBOOK

### DEVELOPMENT OF INTERACTIVE MULTIMEDIA INSTRUCTION (IMI) (PART 3 OF 4 PARTS)



**This Handbook is for guidance only. Do not cite this document as a requirement.**

AMSC N/A  
DISTRIBUTION STATEMENT A. Approved for public release; distribution is

AREA ALSS

## MIL-HDBK-29612-3

### FOREWORD

1. This handbook is approved for use by all Departments and Agencies of the Department of Defense (DoD).

2. This handbook is intended for guidance only. This handbook cannot be cited as a requirement. If it is, the contractor does not have to comply.

3. MIL-HDBK-29612-3 is Part 3 of 4 Parts. Part 3 provides guidance that may be used by DoD (all Services) and industry for the planning, design, development, implementation, evaluation, and management of Interactive Multimedia Instruction (IMI) products. Use of this guidance is not mandatory.

4. Part 1, MIL-HDBK-29612-1, Department of Defense Handbook, Guidance for Acquisition of Training Data Products and Services, provides guidance for the preparation of solicitations and evaluation of solicitation responses for training. Part 2, MIL-HDBK-29612-2, Department of Defense Handbook, Instructional Systems Development/Systems Approach to Training and Education, provides guidance on the Instructional Systems Development (ISD)/Systems Approach to Training (SAT) process and the development of training materials. Part 4, MIL-HDBK-29612-4, Department of Defense Handbook, Glossary for Training, contains acronyms and definitions for commonly used training terms.

5. This handbook supersedes MIL-HDBK-1379-3.

6. This handbook was developed within the DoD with the assistance of all Services as represented by the Interactive Courseware-Joint Services Action Group (ICW-JSAG) and the Defense Training Standards Working Group (DTSWG).

7. Guidance provided in this handbook is not intended to supplement or duplicate policies and procedures in existing Federal, Department of Defense, and Military Service regulations. Should a conflict arise between this handbook and any of the previously mentioned regulations, the regulations take precedence.

8. There are numerous ways to design, develop, implement, and manage the use of Interactive Multimedia Instruction products. The guidance contained herein may not be applicable to your specific organization.

9. Beneficial comments (recommendations, additions, deletions) and any pertinent data which may be of use in improving this document should be addressed to: Commander, Naval Air Warfare Center Aircraft Division, Code 414100B120-3, Highway 547, Lakehurst, NJ 08733-5100 by using the Standardization Document Improvement Proposal (DD Form 1426) appearing at the end of this document or by letter.

## MIL-HDBK-29612-3

**CONTENTS**

<b><u>FOREWORD</u></b>	.....	i
<b>1. SCOPE</b>		
1.1	Scope.....	1
1.2	Application guidance.....	1
1.2.1	How to use this handbook .....	1
<b>2. APPLICABLE DOCUMENTS</b>	.....	1
2.1	General .....	1
2.2	Government documents .....	1
2.2.1	Specifications, standards, and handbooks .....	1
2.2.2	Other Government documents, drawings, and publications.....	2
2.3	Order of precedence .....	2
<b>3. DEFINITIONS</b>	.....	2
3.1	General .....	2
<b>4. INTERACTIVE MULTIMEDIA INSTRUCTION PLANNING</b>	.....	2
4.1	Introduction .....	2
4.2	What is Interactive Multimedia Instruction? .....	2
4.2.1	Interactive Multimedia Instruction products .....	2
4.2.1.1	Source materials for development of Interactive Multimedia Instruction products.....	3
4.3	Interactive Multimedia Instruction and the Instructional Systems Development/Systems Approach to Training (ISD/SAT) process.....	4
4.3.1	Interactive Multimedia Instruction applications .....	4
4.3.2	Advantages of Interactive Multimedia Instruction.....	5
4.4	General rules for selecting Interactive Multimedia Instruction as an instructional media delivery system .....	5
4.5	When to use Interactive Multimedia Instruction.....	6
4.6	Quality improvement.....	6
4.6.1	Continuous improvement .....	6
4.6.2	Keep customer involved .....	6
4.6.3	Get "buy-in" .....	6
4.7	The Interactive Multimedia Instruction project team .....	6
4.7.1	Interactive Multimedia Instruction development team responsibilities.....	6
4.7.2	Interactive Multimedia Instruction implementation team responsibilities.....	7
4.7.3	Interactive Multimedia Instruction team training.....	8
4.8	Management and organizational support decisions .....	8
4.8.1	Management support.....	8
4.8.2	Evaluation of organizational support for Interactive Multimedia Instruction.....	8
4.8.3	Facility support requirements .....	10
4.9	Media selection .....	10
4.9.1	Media selection process.....	11
4.10	Interactive Multimedia Instruction application considerations.....	11
4.10.1	Interactive Multimedia Instruction feasibility.....	11
4.10.2	Interactive Multimedia Instruction exportability. ....	11
4.10.3	Authoring software selection .....	12
4.10.3.1	Authoring languages .....	12

## MIL-HDBK-29612-3

4.10.3.2	Authoring system .....	12
4.10.3.3	Ancillary software.....	12
4.10.3.4	Restrictions for using ancillary software .....	13
4.10.3.5	Authoring software decisions .....	13
4.10.3.5.1	Key capabilities of authoring systems.....	13
4.10.3.5.2	Authoring software selection .....	13
4.10.4	Interactive Multimedia Instruction hardware configuration decisions .....	14
4.10.4.1	Review policies and regulations .....	14
4.10.4.2	Factors influencing hardware selection.....	15
4.10.4.3	Hardware data collection.....	15
4.11	Interactive Multimedia Instruction cost considerations .....	17
4.11.1	Cost factors .....	17
4.11.2	Estimating Interactive Multimedia Instruction development hours .....	17
4.11.2.1	Assumptions for estimating development hours.....	17
4.11.2.2	Affect of changes in variables.....	18
4.11.2.3	Estimating costs for course configuration and maintenance.....	19
4.12	How to plan an in-house Interactive Multimedia Instruction effort. ....	19
4.12.1	Outline the Interactive Multimedia Instruction effort.....	19
4.12.1.1	Establish a development process .....	19
4.12.1.2	Determine project deliverables .....	21
4.12.1.3	Define staff positions and responsibilities .....	21
4.12.1.4	Develop a master schedule.....	21
4.12.2	Prepare the team .....	21
4.12.2.1	Determine training requirements .....	21
4.12.2.2	Provide documentation.....	21
4.12.3	Develop quality control procedures .....	21
4.12.3.1	Review and approval process .....	21
4.12.3.2	QC team responsibilities .....	23
4.12.3.3	QC job aids .....	23
4.12.3.4	How to use the review checklists .....	25
4.12.3.5	Documenting the discrepancy process .....	26
5.	SOURCE MATERIALS FOR INTERACTIVE MULTIMEDIA INSTRUCTION PRODUCTS .....	27
5.1	Text .....	27
5.2	Audio .....	27
5.2.1	Human hearing .....	27
5.2.2	Audio technology.....	27
5.2.2.1	How audio is digitized .....	27
5.2.2.2	Audio quality.....	27
5.2.3	Technology quick-look .....	27
5.2.4	Digital audio in multimedia.....	28
5.2.4.1	Computer control.....	28
5.2.4.2	Sound-critical subject areas .....	28
5.2.4.3	Recording inputs.....	28
5.2.4.4	Computer presentations in the classroom .....	28
5.2.4.5	Repurposing videodisc programs .....	28
5.2.4.6	Speech therapy.....	28
5.2.4.7	Music.....	28
5.2.4.7.1	Additional considerations for music.....	28
5.2.5	Examples of frequency ranges.....	29

## MIL-HDBK-29612-3

5.2.6	Disc storage requirements .....	29
5.2.7	Hardware and software considerations .....	29
5.2.8	Advantages and disadvantages of digital audio .....	30
5.3	Video .....	31
5.3.1	The visual element .....	31
5.3.1.1	Improved applications .....	31
5.3.1.2	Digital still images .....	32
5.3.1.2.1	Still-image basics .....	32
5.3.1.2.2	Capturing still images .....	32
5.3.1.2.3	How a scanner works .....	32
5.3.1.2.4	Scanning slides .....	32
5.3.1.2.5	Scanning text .....	32
5.3.1.2.6	Scanner equipment .....	32
5.3.1.2.7	Frame grabbers .....	33
5.3.1.3	Image resolution .....	33
5.3.1.4	Memory and storage requirements .....	33
5.3.1.5	Digital video .....	33
5.3.1.6	Analog versus digital .....	33
5.3.1.7	How video is digitized .....	34
5.3.1.8	Difficulties in digitizing video .....	34
5.3.1.9	The impetus for digitizing video .....	34
5.3.1.10	Current status and near-term changes .....	35
5.3.2	Motion video-in-a-window .....	35
5.4	Graphics .....	35
5.5	Animation .....	35
6.	INTERACTIVE MULTIMEDIA INSTRUCTION PRODUCT DEVELOPMENT .....	36
6.1	Interactive Multimedia Instruction products .....	36
6.1.1	ICW .....	36
6.1.1.1	ICW design .....	36
6.1.1.2	Develop the ICW specification .....	36
6.1.1.2.1	Purpose of ICW specification .....	36
6.1.1.2.2	Level of detail in the ICW specification .....	36
6.1.1.2.3	Content of the ICW specification .....	36
6.1.1.3	Determine the level of interactivity .....	39
6.1.1.3.1	Levels of learning .....	39
6.1.1.3.2	Hierarchy of learning .....	42
6.1.1.3.3	Sequencing of learning objectives .....	43
6.1.1.3.4	ICW presentation category selection .....	43
6.1.1.3.4.1	Levels of interactivity .....	43
6.1.1.3.4.2	Levels of learning and levels of interactivity .....	43
6.1.1.3.4.3	Sensory stimulus requirement .....	47
6.1.1.3.4.4	Identify instructional delivery mode and impact .....	47
6.1.1.3.4.5	ICW presentation categories .....	48
6.1.1.3.4.6	Considerations for ICW presentation category selection .....	50
6.1.1.3.4.7	ICW presentation category selection data consolidation .....	50
6.1.1.3.4.8	Guidelines for increasing interactivity .....	50
6.1.1.3.5	Guidelines for student control .....	51
6.1.1.3.5.1	Student control .....	52
6.1.1.3.5.2	Influencing factors for student control .....	53

## MIL-HDBK-29612-3

6.1.1.3.6	Guidelines for feedback and remediation design .....	53
6.1.1.3.6.1	Feedback.....	53
6.1.1.3.6.2	Content of feedback.....	53
6.1.1.4	Determine record keeping strategies .....	54
6.1.1.4.1	Record keeping functions.....	54
6.1.1.4.2	Record keeping capabilities.....	54
6.1.1.5	Design of ICW tests.....	54
6.1.1.5.1	Types of ICW tests .....	54
6.1.1.5.2	Tips for ICW test design.....	55
6.1.1.6	Determine instructional treatments .....	56
6.1.1.6.1	ICW events of instruction .....	56
6.1.1.7	Develop flowcharts and storyboards.....	57
6.1.1.7.1	ICW flowcharts.....	57
6.1.1.7.1.1	ICW flowchart guidelines .....	57
6.1.1.7.1.2	Example of ICW flowchart.....	57
6.1.1.7.2	General guidelines for programming .....	59
6.1.1.7.2.1	Programming standards.....	59
6.1.1.7.2.2	Guidelines for programming .....	60
6.1.1.7.3	Storyboards.....	60
6.1.1.7.3.1	Storyboarding techniques.....	60
6.1.1.7.3.2	General ICW storyboard design principles.....	60
6.1.1.7.3.3	Guidelines for implementing the general storyboarding principles.....	61
6.1.1.7.3.4	Guidelines for visual elements.....	63
6.1.1.7.3.4.1	Guidelines for video .....	66
6.1.1.7.3.4.2	Video storyboard guidelines.....	68
6.1.1.7.3.5	Guidelines for text.....	69
6.1.1.7.3.6	Guidelines for graphics and animation .....	70
6.1.1.7.3.7	Guidelines for audio.....	70
6.1.1.7.3.8	Storyboard checklist.....	73
6.1.1.8	ICW prototype lessons .....	78
6.1.1.8.1	Description of ICW prototype lessons.....	78
6.1.1.8.2	ICW prototype content.....	78
6.1.1.8.3	Why have an ICW prototype?.....	78
6.1.1.8.4	ICW prototype guidelines.....	78
6.1.1.8.5	Elements involved in ICW prototype lesson development.....	79
6.1.1.9	How to develop ICW .....	79
6.1.1.9.1	Program the lessons.....	79
6.1.1.9.2	Produce visual displays and record audio.....	81
6.1.1.9.2.1	Visual displays .....	81
6.1.1.9.2.2	Guidelines for producing full-motion video.....	81
6.1.1.9.2.3	Guidelines for audio recording.....	83
6.1.1.9.2.4	Develop text, graphics, and animation.....	83
6.1.1.9.2.4.1	Guidelines for text, graphics, and animation displays .....	83
6.1.1.10	Develop supporting materials and comply with DoD ICW requirements.....	84
6.1.1.10.1	Purpose of supporting materials .....	84
6.1.1.10.2	DoD guidelines for ICW .....	84
6.2	Electronic publications.....	86
6.2.1	Electronic guides .....	86
6.2.2	Interactive Electronic Technical Manuals (IETM) .....	86
6.3	Electronic testing .....	86

## MIL-HDBK-29612-3

6.3.1	About electronic testing .....	86
6.3.2	Benefits of electronic testing .....	86
6.4	Simulation .....	87
6.5	Electronic management systems .....	87
6.5.1	Electronic Performance Support System (EPSS) .....	87
6.5.1.1	An EPSS can provide performance information .....	87
6.5.1.2	An EPSS can reduce training costs .....	88
6.5.1.3	User interface .....	88
6.5.1.4	EPSS considerations .....	88
6.5.2	Computer-Aided Instruction (CAI) .....	88
6.5.2.1	What is CAI? .....	88
6.5.2.2	Reasons for using CAI .....	88
6.5.2.3	CAI and instructor support .....	88
6.5.3	Computer Managed Instruction (CMI) .....	89
6.5.4	Electronic job aids .....	89
7.	INTERACTIVE MULTIMEDIA INSTRUCTION EVALUATION .....	89
7.1	Interactive Multimedia Instruction quality process .....	89
7.1.1	Verification .....	89
7.1.2	Validation .....	89
7.1.3	Acceptance .....	89
7.1.4	Document lessons learned .....	90
7.2	Develop a validation plan .....	90
7.2.1	Purpose .....	90
7.2.2	What is in a validation plan? .....	90
7.2.3	Getting ready to validate .....	90
7.2.4	How to use a validation plan .....	90
7.2.5	Measure against a standard .....	90
7.2.6	Follow the plan .....	91
7.3	Conduct technical accuracy reviews .....	91
7.3.1	What should be reviewed? .....	91
7.3.2	How to conduct a review .....	91
7.4	Conduct individual tryouts .....	92
7.4.1	Purpose .....	92
7.4.2	Select students .....	92
7.4.3	Before an individual tryout .....	93
7.4.4	During an individual tryout .....	93
7.4.5	Typical problems .....	94
7.4.6	After an individual tryout .....	94
7.5	Conduct small-group tryouts .....	94
7.5.1	Purpose .....	94
7.5.2	Select students .....	94
7.5.3	Number of students .....	95
7.5.4	Time is a critical factor .....	95
7.5.5	Before a small-group tryout .....	95
7.5.6	During a small-group tryout .....	95
7.5.7	After a small-group tryout .....	96
7.6	Finalize the Interactive Multimedia Instruction program .....	96
7.6.1	Purpose .....	96
7.6.2	What needs to be updated? .....	96



## MIL-HDBK-29612-3

7.6.3	Final quality check .....	96
8.	NOTES .....	96
8.1	Intended use .....	96
8.2	CD-ROM destruction .....	96
8.3	Subject term (key word) listing .....	97
	CONCLUDING MATERIAL .....	98
	LIST OF FIGURES	
Figure 1	IMI products .....	4
Figure 2	Frequency ranges of some media and human hearing in kilohertz .....	29
Figure 3	Sample ICW course organization .....	38
Figure 4	ICW flowchart example .....	58
	LIST OF TABLES	
Table 1	General rules for using IMI as an instructional media delivery system .....	5
Table 2	IMI development team .....	7
Table 3	IMI implementation team .....	7
Table 4	General types of management support .....	8
Table 5	Decision aid - evaluation of organizational support for IMI .....	9
Table 6	Modification of support level .....	9
Table 7	Decision aid - organizational support re-evaluation .....	10
Table 8	Decision aid - contractor support determination .....	10
Table 9	Decision aid - exportable IMI feasibility checklist .....	12
Table 10	Job aid - hardware data collection .....	16
Table 11	Types of costs .....	17
Table 12	Variables affecting IMI development .....	18
Table 13	Configuration control decision matrix .....	19
Table 14	Example of a development list .....	20
Table 15	Sample format for IMI review and approval .....	22
Table 16	QC responsibilities of IMI development team .....	23
Table 17	Sample format for courseware design review .....	24
Table 18	Sample format for quality specialist final lesson review .....	25
Table 19	Sample format for a discrepancy report .....	26
Table 20	Sampling rates/storage requirements tradeoffs .....	29
Table 21	Hardware/software considerations .....	30
Table 22	Impact of digital audio features .....	30
Table 23	Contrasting video technologies .....	34
Table 24	Job aid for determining levels of learning .....	39
Table 25	Levels of interactivity .....	43
Table 26	Interactivity levels and associated levels of learning .....	44
Table 27	Instructional delivery mode cost impact .....	48
Table 28	Categories of ICW presentations .....	49
Table 29	Job Aid-ICW presentation category selection data consolidation .....	50
Table 30	Guidelines for increasing user interactivity .....	51
Table 31	Guidelines for designing student control of ICW .....	52
Table 32	Guidelines for designing feedback for ICW .....	53
Table 33	Guidelines for designing ICW tests .....	55
Table 34	ICW events of instruction .....	56



## MIL-HDBK-29612-3

Table 35	Programming standards considerations .....	59
Table 36	Guidelines for programming elements of a storyboard.....	60
Table 37	Steps involved in storyboard development.....	61
Table 38	Guidelines for storyboarding ICW.....	62
Table 39	Guidelines for storyboarding visual elements .....	64
Table 40	Guidelines for storyboarding video elements .....	67
Table 41	Guidelines for storyboarding text elements .....	69
Table 42	Guidelines for storyboarding graphics and animation elements .....	70
Table 43	Guidelines for storyboarding audio .....	71
Table 44	Storyboard checklist.....	73
Table 45	Prototype lesson development elements .....	79
Table 46	ICW programming guidelines .....	80
Table 47	Video production guidelines .....	82
Table 48	Audio production guidelines .....	83
Table 49	ICW display convention guidelines .....	84
Table 50	Sample job aid for internal review.....	92
Table 51	Sources of individual tryout information .....	94

## MIL-HDBK-29612-3

**1. SCOPE**

1.1 Scope. This handbook provides background information for the planning, design, development, implementation, evaluation, and management of Interactive Multimedia Instruction (IMI) products. Interactive Multimedia Instruction products include electronic products used in the delivery of instruction or supporting the delivery of instruction. See paragraph 4.2 for a further breakdown of Interactive Multimedia Instruction products. This handbook (Part 3 of 4 Parts) also provides acquisition guidance unique to Interactive Multimedia Instruction products and supplements general acquisition guidance provided in MIL-HDBK-29612-1 (Part 1 of 4 Parts).

1.2 Application guidance. This handbook is intended for guidance only. This handbook cannot be cited as a requirement. If it is, the contractor does not have to comply.

1.2.1 How to use this handbook. The guidance provided in this handbook applies to any Interactive Multimedia Instruction program development. It applies to Interactive Multimedia Instruction in weapons system or training system acquisitions. It also applies to Interactive Multimedia Instruction developed as a stand-alone training product. MIL-HDBK-29612-2 provides guidance for the selection of instructional media. When Interactive Multimedia Instruction is determined to be the best instructional media, the guidance in MIL-HDBK-29612-3 will assist in verifying whether or not Interactive Multimedia Instruction can be used and supported by the training activity. After verification, further guidance will aid in the design and development of an Interactive Multimedia Instruction program.

**2. APPLICABLE DOCUMENTS**

2.1 General. The documents listed below are not necessarily all of the documents referenced herein, but are the ones that are needed in order to fully understand the information provided by this handbook.

2.2 Government documents.

2.2.1 Specifications, standards, and handbooks. The following specifications, standards, and handbooks form a part of this document to the extent specified herein. Unless otherwise specified, the issues of these documents are those listed in the latest issue of the Department of Defense Index of Specifications and Standards (DoDISS) and supplement thereto.

**SPECIFICATIONS****MILITARY**

MIL-PRF-29612A	Performance Specification, Training Data Products
----------------	---

**HANDBOOKS****MILITARY**

MIL-HDBK-9660	Department of Defense Handbook, DoD-Produced CD-ROM Products
MIL-HDBK-29612-1	Department of Defense Handbook, Guidance for Acquisition of Training Data Products and Services

## MIL-HDBK-29612-3

MIL-HDBK-29612-2	Department of Defense Handbook, Instructional Systems Development/Systems Approach to Training and Education
MIL-HDBK-29612-4	Department of Defense Handbook, Glossary of Training Terms

(Unless otherwise indicated, copies of military specifications, standards, and handbooks are available from the Standardization Documents Order Desk, Building 4D, 700 Robbins Avenue, Philadelphia, PA 19111-5094.)

**2.2.2 Other Government documents, drawings, and publications.** The following other Government documents, drawings, and publications form a part of this document to the extent specified herein.

JIEO REPORT 8300	Department of Defense Minimum Desktop Personal Computer Configuration
------------------	---

(Copies of this JIEO Report may be obtained by written request to the Commander, Joint Interoperability Engineering Organization (JIEO), Attn: Code TP, Fort Monmouth, NJ 07703-5613)

**2.3 Order of precedence.** In the event of a conflict between the text of this document and the references cited herein, the text of this document takes precedence. Nothing in this document, however, supersedes applicable laws and regulations unless a specific exemption has been obtained.

### **3. DEFINITIONS**

**3.1 General.** Definitions and acronyms are provided in MIL-HDBK-29612-4.

### **4. INTERACTIVE MULTIMEDIA INSTRUCTION PLANNING**

**4.1 Introduction.** Managers achieve successful Interactive Multimedia Instruction (IMI) design, development, acquisition, and management when they become involved with the using activities as soon as Interactive Multimedia Instruction requirements are identified. Deciding whether to use Interactive Multimedia Instruction requires careful planning and consideration. This section provides information and decision aids to help determine whether Interactive Multimedia Instruction can be used and supported by the training activity.

**4.2 What is Interactive Multimedia Instruction?** Interactive Multimedia Instruction is a term applied to a group of predominantly interactive, electronically-delivered training and training support products. IMI products include instructional software and software management tools used in support of instructional programs.

**4.2.1 Interactive Multimedia Instruction products.** Interactive Multimedia Instruction products are teaching tools and may be used in combination or individually. Used individually not all Interactive Multimedia Instruction products can be considered interactive, multimedia, or instructional. However, Interactive Multimedia Instruction products when used in combination with one another are interactive, multimedia, and instructional. A hierarchical representation of IMI products is provided in Figure 1. Interactive Multimedia Instruction products include:

## MIL-HDBK-29612-3

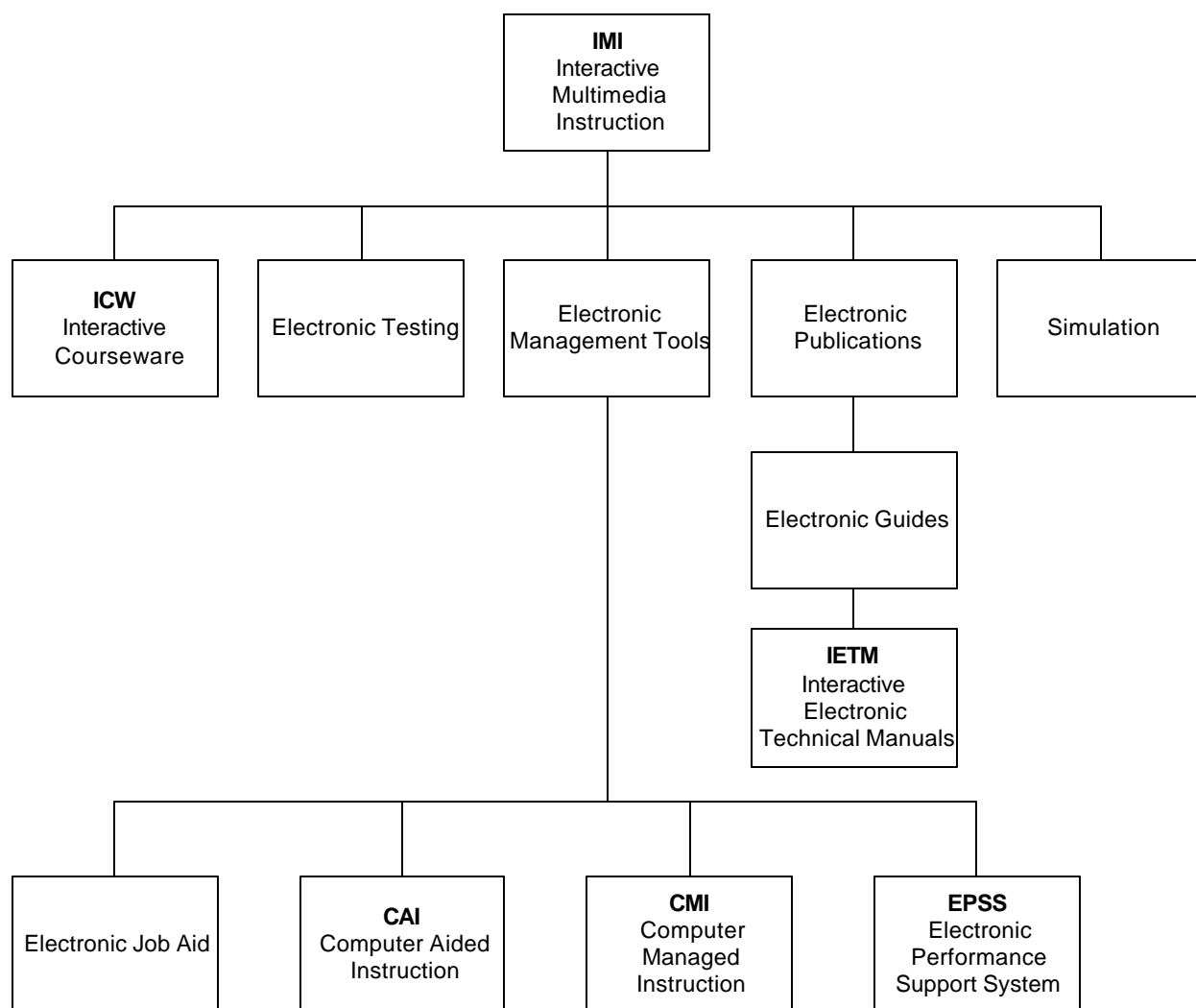
- a. Interactive Courseware (ICW).
- b. Electronic publications.
  - (1) Electronic guides.
  - (2) Interactive Electronic Technical Manuals (IETMs).
- c. Electronic testing.
- d. Simulation.
- e. Electronic management tools.
  - (1) Electronic Performance Support System (EPSS).
  - (2) Computer Aided Instruction (CAI).
  - (3) Computer Managed Instruction (CMI).
  - (4) Electronic job aids (e.g., templates, macros, etc.).

### 4.2.1.1 Source materials for development of Interactive Multimedia Instruction products.

Types of source materials for development of Interactive Multimedia Instruction products include:

- a. Imagery (e.g., animations, graphics, still photograph, 3-D, etc.).
- b. Video.
- c. Audio.
- d. Text.

## MIL-HDBK-29612-3

FIGURE 1. **IMI products.**

**4.3 Interactive Multimedia Instruction and the Instructional Systems Development/ Systems Approach to Training (ISD/SAT) process.** The ISD/SAT process provides the framework for developing training (see MIL-HDBK-29612-2). Within the framework of the ISD/SAT process, training requirements are established and translated into appropriate instructional objectives. In the design phase, one of the most important tasks is that of selecting appropriate instructional delivery methods and media. After the methods and media are selected, the guidance provided in this Part of the handbook is applicable for the planning, design, and development of Interactive Multimedia Instruction.

**4.3.1 Interactive Multimedia Instruction applications.** Interactive Multimedia Instruction uses may include 1) a stand-alone program that is suitable for use in supplementing a formal course of instruction or distributing to operational activities for use, 2) a program that supports presentation by an instructor, 3) a program that supports formal on-the-job training, 4) a program that supports personnel performance, or 5) a program that supports the management of courseware.

## MIL-HDBK-29612-3

**4.3.2 Advantages of Interactive Multimedia Instruction.** Interactive Multimedia Instruction may be a suitable instructional media delivery system for many training objectives. Thanks to the rapid development of computer technology, it is now possible to create, at a reasonable price, new ways of designing and developing educational and training materials. Today, computers can be used to deliver interactive, competency-based, individualized, multimedia instruction. Interactive Multimedia Instruction can tailor instruction to the individual student's needs, be deployable, and provide "just-in-time" instruction.

**4.4 General rules for selecting Interactive Multimedia Instruction as an instructional media delivery system.** General rules that apply to using almost any form of Interactive Multimedia Instruction are shown in Table 1.

**TABLE 1. General rules for using IMI as an instructional media delivery system.**

#	GENERAL RULE	RATIONALE
1	Use IMI to gather a large collection of multimedia material, such as slide collections or still photographs or a mixture of still-frame and motion sequences on film or video.	When the volume of slides and the demand for reproduction reach a certain point, the use of IMI may prove to be the most cost-effective means of distribution. Motion sequences, film and video reproduction, are in the long run much more expensive than IMI reproduction. Also, film and video tapes tend to deteriorate over time, where IMI will maintain the images at the same resolution for extensive periods.
2	IMI training should be considered when there are a large number of students distributed over time and place.	In this instance, a cost trade-off exists between self-paced, individualized training and lecture-based training. The break-point is achieved when the number of students is so large and/or widely distributed that it becomes more economical to use individualized training methods.
3	Consider using IMI applications when it is necessary to allow students to practice a skill, and a simulator or real equipment is impractical or unavailable for this training.	If designed correctly, an IMI simulation can often greatly reduce the amount of time required in hands-on training on real equipment or a simulator. Real equipment or a simulator might not be available to provide every student with an opportunity to practice. Real equipment may be undesirable for hands-on training because it is too delicate for constant training use.
4	IMI can provide a safe, yet realistic, simulation of dangerous activities and situations.	When potentially hazardous procedures must be demonstrated or practiced, simulation often becomes a necessity. A case in point involves teaching maintenance personnel how to repair high voltage equipment. Simulation would allow maintenance personnel to practice proper procedures without exposure to actual dangers. An IMI simulation can show the effects of improperly performed procedures without damaging equipment or injuring personnel.
5	IMI is a particularly suitable instructional media delivery system when training requires continuous practice and/or retraining.	One of the most desirable features of IMI is the ease with which any portion of a course or lesson can be retrieved and reviewed. This characteristic is best illustrated by pilot training. Continuous practice is required because pilots must maintain near-perfect proficiency.
6	IMI can be a very useful delivery method in training problem-solving and decision-making skills.	Since advanced or higher-order skills are usually learned "on-the-job," experienced workers are often forced to spend valuable time training unskilled workers, at the expense of their own jobs. IMI training could be substituted, thereby freeing skilled employees from the task of training others.

**TABLE 1. General rules for using IMI as an instructional media delivery system - Continued.**

#	GENERAL RULE	RATIONALE
7	When a training situation is such that students vary in experience, learning style, and skill level, IMI instruction can provide different types and levels of instruction to different students.	Specific features can be designed into an IMI program to allow users to advance based on their skill levels. IMI programs can be designed to facilitate individual differences in students' learning styles. For example, if the students are visually oriented rather than spatially oriented, the IMI might contain motion video and animation.

**4.5 When to use Interactive Multimedia Instruction.** Deciding when to use Interactive Multimedia Instruction requires a step-by-step examination process. Interactive Multimedia Instruction should not be selected simply for its technological appeal. This handbook provides additional information and decision aids to assist in identifying constraints that could influence the design of Interactive Multimedia Instruction products.

**4.6 Quality improvement.** Quality Improvement (QI) is the continuous, organized implementation of beneficial change to the process of designing and developing Interactive Multimedia Instruction. The goal of QI is to promote continuous improvement in the Interactive Multimedia Instruction process and products.

**4.6.1 Continuous improvement.** Continuous QI of instructional programs is an ongoing initiative. The Interactive Multimedia Instruction development process is designed to lead managers and designers to ask the right questions and help focus on the customer's needs in terms of requirements, schedules, and budgets. Focusing on the needs of the customer is a key element of continuous QI. Customer satisfaction is the number one goal; customer satisfaction translates into meeting instructional requirements in the most effective and efficient manner possible.

**4.6.2 Keep customer involved.** Once the requirements for the Interactive Multimedia Instruction program have been established and agreed upon, it is important to keep the customer involved in the process. There are several points in the development of an Interactive Multimedia Instruction program where the customer should be involved in the development and review of products that make up the Interactive Multimedia Instruction material.

**4.6.3 Get "buy-in".** It is essential that the user organization "buy in" to the Interactive Multimedia Instruction design and development process. If the user organization disagrees with the proposed solutions or ideas, it is better to find out and make adjustments early in the process. If the user is kept involved throughout the process, there should be no "surprises" when the final product is delivered.

**4.7 The Interactive Multimedia Instruction project team.** Depending on the scope of the project and resources available, many different people can be involved in the Interactive Multimedia Instruction process.

**4.7.1 Interactive Multimedia Instruction development team responsibilities.** Each member of the Interactive Multimedia Instruction development team must know what is expected of them. The Interactive Multimedia Instruction development team needs to know what products are required and when, and how Interactive Multimedia Instruction products in the user organization look and function. Interactive Multimedia Instruction development requires team members with a



## MIL-HDBK-29612-3

variety of experience. Table 2 lists the Interactive Multimedia Instruction team functions, and describes the specific responsibilities assigned. Depending upon the scope and size of the specific Interactive Multimedia Instruction project and organization management, some of the responsibilities listed below may be combined.

TABLE 2. IMI development team.

<b>FUNCTION</b>	<b>RESPONSIBILITIES</b>
Courseware Developer	Authors lesson designs, flowcharts, and storyboards. Designs and/or creates static and animated graphics, performance exercises, simulations, and interactive sequences. Programs lessons with authoring systems.
Instructional Designer	Develops standards and instructional strategies for IMI lessons. Assists with lesson authoring when required. Reviews completed lesson designs, flowcharts, and storyboards for instructional integrity and conformance with standards and strategies.
Subject Matter Expert (SME)	Provides information on project subject matter. Reviews lesson designs, flowcharts, storyboards, and programmed lessons for technical accuracy and currency. Authors lessons as required.
Courseware Programmer	Programs lessons with authoring languages. Develops static and animated graphics with authoring languages. Assists in converting American Standard Code for Information Interchange (ASCII) code when automatic conversion is unavailable. Develops subroutines.
Graphic Artist	Develops graphics and is the advisor for visual conventions.
Media Production Specialist	Films motion and still-frame sequences. Coordinates audio narration. Assists in planning premaster media layout.

4.7.2 Interactive Multimedia Instruction implementation team responsibilities. After Interactive Multimedia Instruction is developed, a team of personnel with specific responsibilities is needed to implement the program. Table 3 lists the functions and responsibilities of the team members. Due to the type and use of a specific Interactive Multimedia Instruction program, some of the below listed responsibilities may need to be distributed to a different labor category.

TABLE 3. IMI implementation team.

<b>FUNCTION</b>	<b>RESPONSIBILITIES</b>
Configuration Manager	Catalogs, stores, and distributes courseware materials including student guides, workbooks, flowcharts, storyboard hard copy, lesson design hard copy, flowcharts, lesson disks, backup disks or tapes, and version updates.
Courseware Administrator *	Enrolls students. Tracks student progress through CMI reports. Maintains records on student progression. Provides student progression records to instructors.
System Administrator	Sets up and runs computer laboratories. Contacts technicians for unscheduled maintenance. Trains staff to use the hardware system.

MIL-HDBK-29612-3

TABLE 3. IMI implementation team - Continued.

FUNCTION	RESPONSIBILITIES
Class Monitor *	Assists students using IMI. Responds to operational questions and monitors performance using CMI. Updates instructors on student performance.
Instructor *	Provides individual remedial instruction and counseling. Tracks student performance through CMI. Schedules students for remediation. May also participate in IMI development as courseware developer, instructional design, or SME.
*	This function may not be required in an exportable environment, but the responsibilities identified in this Table may be required. It may be necessary to redistribute responsibilities to another function on the exportable courseware implementation team.

4.7.3 Interactive Multimedia Instruction team training. A successful Interactive Multimedia Instruction design and development effort requires team members with skills in initial selection decisions, design, development, and implementation of Interactive Multimedia Instruction. The team should receive training in Interactive Multimedia Instruction design, development, and implementation.

4.8 Management and organizational support decisions. This section provides information on how to determine if organizational support for Interactive Multimedia Instruction exists. Successful implementation of Interactive Multimedia Instruction depends on sufficient management support and proper facilities.

4.8.1 Management support. There are three general types of management support required 1) commitment of resources, 2) enthusiasm for the project, and 3) the ability to meet staffing demands. Table 4 provides general descriptions of the three types of management support.

TABLE 4. General types of management support.

TYPE OF SUPPORT	DESCRIPTION
Commitment of resources	Upper level management support is needed for successful IMI development and implementation. Management controls the resources. On IMI projects, resources may be needed for 1) purchasing hardware, software, and IMI, 2) training the IMI team, 3) facilities, and 4) support personnel.
Enthusiasm for project	Enthusiastic managers can serve as project advocates and promote an atmosphere of cooperation throughout the training organization. By their enthusiasm for a project, managers can reduce negative attitudes of others associated with the project.
Meeting staffing demands	Management support is essential in meeting staffing demands. The selection, assignment, and training of personnel should be a major concern. Ideally, management should assign personnel to the project from start to finish. Although assignment longevity is hard to achieve in a military environment, it is a critical factor to the success of an IMI project. Personnel rotation can slow the IMI process because of learning curves for new employees, and different perceptions of what is needed.

4.8.2 Evaluation of organizational support for Interactive Multimedia Instruction. This section provides decision aids to help evaluate the level of organizational support. The decision aids also help to identify an action and develop a plan for altering the level of organizational support, re-evaluate organizational support, and identify potential solutions for support issues.

## MIL-HDBK-29612-3

- a. Lack of support in any of the categories listed in Table 5 can lead to serious consequences, but a support deficit does not necessarily eliminate the option of Interactive Multimedia Instruction.

TABLE 5. Decision aid - evaluation of organizational support for IMI.

SUPPORT CATEGORY	EVALUATION PROCEDURE	SUPPORT IS	
		Available	Unavailable
Management support	Talk to managers to determine their support for IMI.		
Staff support	Talk to staff to determine support for IMI.		
Staff availability	Review future commitments for staff. Determine whether staff can be added.		
Staff skills	Review staff resumes. Interview staff about prior IMI experience.		
Staff dedication	Determine whether staff can be dedicated for the duration of the project.		

- b. Use Table 6 to identify an action and develop a plan for altering the level of organizational support. Table 6 lists the critical support categories, the potential results of a support deficit, and suggested actions to reduce the deficit or increase the level of support.

TABLE 6. Modification of support level.

SUPPORT CATEGORY	RESULTS OF SUPPORT DEFICIT	ACTION TO ALTER DEFICIT
Management support	May have resource availability problems. Lack of support may flow down through organization.	Inform management of IMI benefits and advantages. Involve managers in the decision process or planning phase.
Staff support	Instructors may resist the change and be uncooperative during implementation.	Provide training on IMI to reduce resistance. Convince staff that changing roles does not mean less responsibility. Involve staff in decision process.
Staff availability	May not have the force to develop IMI.	Add staff to current force. Defer current commitments. Contract out IMI development.
Staff skills	Learning curve may be high. Development may proceed slowly.	Train staff to perform IMI development. Contract out development. Add experienced staff to current force.
Staff dedication	Lesson revisions increase with IMI staff changes.	Develop and enforce lesson standards to reduce potential for format changes.

## MIL-HDBK-29612-3

- c. Organizational support re-evaluation. Use Table 7 to re-evaluate organizational support based on the data collected on Tables 5 and 6. If support is now available in three of five categories (one must be management), Interactive Multimedia Instruction may be pursued. If the re-evaluation still reflects a substantial support deficit and the decision is made to pursue Interactive Multimedia Instruction, be prepared for additional problems in meeting schedules.

TABLE 7. **Decision aid - organizational support re-evaluation.**

SUPPORT CATEGORY	SUPPORT IS	
	Available	Unavailable
Management support		
Staff support		
Staff availability		
Staff skills		
Staff dedication		

- d. Support deficit solutions. One potential solution to a support deficit in the area of staffing requirements is contracting Interactive Multimedia Instruction to a commercial training development company. Use Table 8 to determine if contractor support is a potential solution.

TABLE 8. **Decision aid - contractor support determination.**

ITEM	DECISION FACTOR	YES	NO
1	Scope and schedule exceed in-house capability. (see Note.)		
2	Inadequate staffing support for IMI (see Note).		
3	Adequate staff available but inexperienced with IMI.		
4	Staff dedication to IMI lacking.		
5	Contract funding available.		
NOTE: If the answer is "yes", this may be adequate reason for pursuing contractor assistance.			

4.8.3 Facility support requirements. A number of facility requirements affect implementation of certain Interactive Multimedia Instruction products. Three of the major factors are delivery system facility requirements, development system facility requirements, and special facility requirements. See applicable sections for further guidance on facility requirements.

4.9 Media selection. MIL-HDBK-29612-2, Section 7, provides guidance for the selection of media. The output of media selection identifies the appropriate media for supporting the specific Learning Objectives (LOs). The following paragraphs provide guidance on determining whether the use of Interactive Multimedia Instruction is feasible in the target environment. (For example, during media selection Interactive Multimedia Instruction was found to be the most effective media to support the learning objectives. However, during the Interactive Multimedia Instruction feasibility analysis, it was found that the course content was expected to be unstable for the next three years due to immaturity of the supported system. In this case, immediate development of Interactive Multimedia Instruction may not be the most cost effective solution, and the media selection should be conducted again with course content stability being used as a constraint.)

## MIL-HDBK-29612-3

4.9.1 Media selection process. Media selection is a four step process and is conducted as follows:

- a. Identify sensory stimulus requirements for each learning objective.
- b. Identify sensory stimulus features for all available media.
- c. Match the sensory stimulus requirements with the sensory stimulus features to identify a candidate list of media.
- d. Select the delivery media (i.e., transparencies, printed materials, audio tape, video, film, ICW, CD-ROM, web server, etc.) based on resource constraints, classroom logistics, and all other relevant considerations.

4.10 Interactive Multimedia Instruction application considerations. Interactive Multimedia Instruction can be applied across several levels of instruction, from entry-level to advanced refresher training. This Interactive Multimedia Instruction characteristic should be considered during the trade-off analysis. Design and development to support several training levels can significantly reduce overall life cycle costs because a greater number of training requirements can be satisfied with a single product. A single Interactive Multimedia Instruction product covering several training levels may cost more to develop.

4.10.1 Interactive Multimedia Instruction feasibility. The results of the media selection process should be analyzed to determine if the media selected is feasible for the intended instruction. A job aid for media feasibility is provided in MIL-HDBK-29612-2, Appendix D.

4.10.2 Interactive Multimedia Instruction exportability. Exportable Interactive Multimedia Instruction consists of products that are developed and/or managed at a centralized location, but delivered at more than one remote user facility. Use Table 9 to determine if exporting Interactive Multimedia Instruction to remote locations is feasible. The exportability decision aid has three parts. Guidance on the use of the three parts follows:

- a. If you obtain a "yes" response to all three questions in Part I, go directly to Part III. If you obtain a "no" response to any of the questions in Part I, you need to complete Part II.
- b. A "no" response to either question in Part II indicates that exportable Interactive Multimedia Instruction cannot be supported and should not be attempted until funds are allocated. "Yes" responses to Part II indicate that exportable Interactive Multimedia Instruction is feasible, and you should complete Part III.
- c. "Yes" responses to the questions in Part III indicate that Interactive Multimedia Instruction is feasible.

## MIL-HDBK-29612-3

TABLE 9. **Decision aid - exportable IMI feasibility checklist.**

EXPORTABILITY QUESTIONS	YES	NO
<b>PART I</b>		
Is there existing hardware at the field unit that can support IMI training?		
Is the number of hardware stations sufficient to train the number of students?		
Is the existing hardware available for IMI training?		
<b>PART II</b>		
Are funds available for hardware procurement?		
Are funds available for operating IMI?		
<b>PART III</b>		
Is IMI an appropriate media for presenting this content?		
Do the target audience demographics justify IMI use?		

4.10.3 Authoring software selection. Authoring software includes prepackaged prompted aids, courseware templates, or menu driven editors designed to help authors create Interactive Multimedia Instruction without elaborate programming. This section describes authoring software and how the characteristics of authoring software affect selection of an authoring software package. When selecting authoring software it is necessary to have Interactive Multimedia Instruction team members who are experienced with programming, courseware development, and instructional design. The Interactive Multimedia Instruction authoring software decision is based on a number of selection factors, military acquisition restrictions, command regulations, and local directives and policies. Before examining various software systems, become familiar with the acquisition process and review appropriate regulations such as DODI 1322.20, Development and Management of Interactive Courseware for Military Training; and MIL-PRF-29612, Performance Specification, Training Data Products. There are three types of Interactive Multimedia Instruction authoring software; 1) authoring language, 2) authoring system, and 3) ancillary software. Descriptions are as follows:

4.10.3.1 Authoring languages. An authoring language is a set of words, notation, syntax, and semantics used by an author to specify the logic and content of instruction to be delivered by a computer.

4.10.3.2 Authoring system. An authoring system (often referred to as an authoring package) is a prepackaged, prompted authoring aid, courseware template, or menu-driven editor designed to help authors (without formal computer programming skills) create Interactive Multimedia Instruction without elaborate programming.

4.10.3.3 Ancillary software. Ancillary software refers to commercial off-the-shelf packages or tools used with authoring software. Examples of ancillary software are:

- a. Word processing software.
- b. Graphics software.
- c. Flowcharting software.
- d. Storyboarding tools.
- e. CMI software.

## MIL-HDBK-29612-3

4.10.3.4 Restrictions for using ancillary software. There are two restrictions for using ancillary software, descriptions are as follows:

- a. The authoring software must have the capability to import the code generated by the ancillary software.
- b. The authoring software must be able to use the imported code.

4.10.3.5 Authoring software decisions. Typically, a decision will not need to be made as to whether to use an authoring language or an authoring system to develop courseware. Because of the ease of implementation and the flexibility and power now available with most authoring systems, the decision most likely to be faced is which authoring system should be used. The information presented below will help make this decision.

4.10.3.5.1 Key capabilities of authoring systems. For authoring systems to facilitate development of Interactive Multimedia Instruction, a variety of key capabilities are required. Authoring system capabilities are divided into two major categories: authoring and presentation capabilities, and CMI capabilities. Authoring systems vary with regard to the authoring and presentation capabilities and specific CMI capabilities as follows:

- a. Authoring/presentation capabilities assist in performing such authoring tasks as:
  - (1) Developing or editing text displays.
  - (2) Creating or editing graphics.
  - (3) Animating graphics.
  - (4) Developing written test items and response analysis.
  - (5) Creating performance test items.
  - (6) Programming video sequences.
  - (7) Sequencing lesson material.
  - (8) Using utilities.
- b. CMI capabilities are available to manage instruction. Categories for CMI capabilities are:
  - (1) Administration.
  - (2) Record keeping.
  - (3) Schedule generation.
  - (4) Answer judging.
  - (5) Report generation.
  - (6) Random test generation.

4.10.3.5.2 Authoring software selection. Selecting authoring systems is generally the outcome of a tradeoff analysis. There are two phases to the selection process. Phase 1 is selecting the authoring capabilities that are required or desired. Phase 2 is conducting a tradeoff analysis comparing two or more authoring software packages. The following data should be collected to aid in the authoring software selection process:

- a. General information:
  - (1) Name of software package and version number.



## MIL-HDBK-29612-3

- (2) Reviewer's name and phone number.
  - (3) Review date.
- b. Software characteristics:
- (1) Description of text entry and editing procedures.
  - (2) Description of color selection procedures.
  - (3) Description of graphics creating and editing procedures.
  - (4) Description of animation procedures.
  - (5) Description of video editing procedures.
  - (6) Description of procedures for sequencing displays (indicating branching strategies).
  - (7) Description of procedures for specifying CMI functions.
  - (8) Performance test item generation.
  - (9) Record keeping.
  - (10) Schedule generation.
  - (11) Report generation.
  - (12) Central Processing Unit (CPU) type and speed required to run the software.
  - (13) Operating system needed to run the software.
  - (14) Random Access Memory (RAM) needed to run the software (does the selected hardware have it?).
  - (15) Ability to use legacy data.
- c. Costing information:
- (1) Cost of individually purchased software package.
  - (2) Number of software packages needed for Interactive Multimedia Instruction development.
  - (3) Cost of site license.
  - (4) Comparison of cost of site license to the cost of purchasing individual software packages.
  - (5) Run time costs.
  - (6) Cost of Interactive Multimedia Instruction team training on use of authoring software.
- d. Software support:
- (1) Description of technical support available to users.
  - (2) Support for peripheral equipment such as audio, printer, pointing device, joystick, network capability, touch screen, optical scanner, etc.

**4.10.4 Interactive Multimedia Instruction hardware configuration decisions.** This section addresses hardware selection and describes the impact that hardware decisions have on Interactive Multimedia Instruction. The goal is to choose a configuration that supports a variety of parameters, including the previously selected Interactive Multimedia Instruction instructional features and the authoring system. Personnel with a hardware background are desired for this phase of the Interactive Multimedia Instruction decision-making process.

**4.10.4.1 Review policies and regulations.** The Interactive Multimedia Instruction hardware decision is based on a number of selection factors including, military acquisition restrictions,

## MIL-HDBK-29612-3

command regulations, and local directives and policies. Before examining various hardware systems, become familiar with the acquisition process and review appropriate regulations. Some sources for review would be Department of Defense (DoD) instructions on Interactive Multimedia Instruction and computers, Defense Information Systems Agency (DISA) publications, commercial publications, and guidance provided in applicable Service documents.

4.10.4.2 Factors influencing hardware selection. After reviewing regulations and determining how restrictions affect the selection process, examine specific hardware systems for the following:

- a. Interface with authoring software.
- b. Processing speed.
- c. Capability to support multimedia.
- d. Transportability.
- e. Existing hardware.
- f. Cost.
- g. Vendor support and past performance.
- h. RAM.
- i. Standards.
- j. Security.

4.10.4.3 Hardware data collection. Determining the hardware requirements is a two step process. The first step is to determine existing hardware capability. This data may be used to constrain the design of courseware. After determining what media the existing hardware will support, a determination needs to be made as to whether or not that design will satisfy the training need. If the media design will not satisfy the training need then the hardware will need to be upgraded or new systems procured. Selecting hardware is generally done by conducting a tradeoff analysis. Table 10 is an aid to be used in recording data on both existing systems and prospective systems.

## MIL-HDBK-29612-3

TABLE 10. Job aid - Hardware data collection.

<b>HARDWARE DATA COLLECTION INFORMATION REQUIREMENTS</b>			
<b>1. GENERAL INFORMATION</b>			
a. Name of hardware system:			
b. Reviewer's name and phone number:			
c. Review date:			
<b>2. HARDWARE CHARACTERISTICS</b>	<b>ON HAND</b>	<b>DESIRED</b>	<b>DELTA</b>
d. Processor type and speed:			
e. Installed RAM:			
f. Storage capability:			
g. Sound capabilities:			
h. CD-ROM speed:			
i. Operating system:			
j. Network support:			
k. Number of users supported by network:			
l. Speed of lesson access from network:			
m. Graphic and text plot speed:			
n. System response to input:			
o. Input devices supported by the system:			
Joystick			
Trackball			
Mouse			
Touch pad			
Touch-sensitive monitor			
Light pen			
Keyboard			
Key pad			
Bit pad			
Microphone			
Other			
p. Type of monitor:			
Screen resolution (640 x 480, etc.)			
Dotpitch (e.g., .28)			
q. Cost of a different monitor if necessary:			
r. Graphics/video controller card with the system (e.g., CGA, EGA, VGA, SVGA):			
On board memory (video RAM, 1MB, 2MB, 4MB etc.)			
s. Cost of a different graphics/video controller card if necessary:			
t. Cost of hardware system:			
u. What is included in this cost (e.g., specific components, documentation, user support, maintenance and system integration):			
v. Items that can be added later to extend the system (e.g., RAM, networking software, larger storage, higher resolution monitor, graphics/video controller cards, input devices, and optical disk technology):			
<b>3. INFORMATION REQUIREMENTS</b>			
w. Standard maintenance offered as part of the purchase:			
x. Specific maintenance support included in a standard agreement:			
y. Components under warranty:			
z. Length of the warranty period:			
aa. Cost of extending the maintenance agreement:			
bb. Ongoing user support available at no additional charge (e.g., telephone support, user-friendly documentation):			

## MIL-HDBK-29612-3

**4.11 Interactive Multimedia Instruction cost considerations.** This section explains how direct and indirect costs can affect your decision to use Interactive Multimedia Instruction. This section also presents a methodology for estimating the amount of time it will take to produce one hour of finished Interactive Multimedia Instruction.

**4.11.1 Cost factors.** The final decision about using Interactive Multimedia Instruction cannot be made until direct and indirect costs are known. Table 11 provides a description of direct and indirect costs.

TABLE 11. **Types of costs.**

TYPE OF COST	DESCRIPTION
Direct Cost	A cost that is specifically identifiable to the project. Examples of direct costs are hardware and software purchases, travel and per diem, and time charges to a specific project. Other direct costs include reproduction costs of IMI materials including laser discs, costs to copy floppy diskettes, video production costs, etc.
Indirect Cost	A cost that is not specifically identifiable to the project. Examples of indirect costs are payroll and administrative costs, electric bills, and basic overhead accounts. Another example of an indirect cost is the money required to train a programmer on a particular authoring system if the costs are not charged directly to a specific project. Moneys associated with modifying or constructing the IMI facilities could be indirect costs.

**4.11.2 Estimating Interactive Multimedia Instruction development hours.** There are factors and variables that can effect the development time required per one hour of completed Interactive Multimedia Instruction.

**4.11.2.1 Assumptions for estimating development hours.** A list of factors that define a "best case" situation is provided below:

- a. The Interactive Multimedia Instruction developer is familiar with the subject matter, and has in-house SMEs.
- b. The subject matter is not highly complex.
- c. The instructional content is stable; that is, the system for which the training is being developed exists and is not emerging. Also, the tasks selected for Interactive Multimedia Instruction training do not continually change.
- d. The instructional content is well documented. A training needs assessment and task and learning analysis have been completed, giving the designer a good idea of the performance expected and the tasks to be trained. The technical materials supporting the content domain are accurate.
- e. The Interactive Multimedia Instruction developer is familiar with the selected Interactive Multimedia Instruction authoring software.
- f. The Interactive Multimedia Instruction developer is familiar with the target audience.
- g. There is no requirement to document to a military standard such as MIL-STD-2167A, and best commercial practices are accepted for software development and video production.

## MIL-HDBK-29612-3

- h. The Interactive Multimedia Instruction project team consists of individuals who are experienced with Interactive Multimedia Instruction management, design and development.
- i. The selected Interactive Multimedia Instruction authoring system is mature and stable. No beta versions are used.
- j. A lesson format and design strategy are agreed upon "up front", and the customer has "bought into" it. If possible, the customer has approved a prototype lesson. Also, the development process is standardized.
- k. The customer works closely with the design team on a regular basis. The customer uses objective acceptance criteria and does not continually change the individual who is responsible for reviewing and approving the lessons.
- l. All required resources are in place.

4.11.2.2. Affect of changes in variables. Many factors might affect the Interactive Multimedia Instruction development effort. There are degrees of risk associated with these factors. Table 12 shows a degree of risk associated with some variables that might impact the cost, timeliness, or educational soundness of the product. This list is not all inclusive. Individual programs may have different or additional variables.

TABLE 12. Variables affecting IMI development.

VARIABLES	RISK FACTOR
1. No "in-house" SMEs; must rely solely on use of customer SMEs.	medium
2. Subject matter is highly complex.	high
3. Instructional content is unstable. System for which IMI is being developed is emerging. Tasks for IMI constantly changing.	high
4. Inadequate documentation. No training needs assessment performed. No task analysis or learning analysis data. Technical manuals non-existent or not helpful.	high
5. Developer not familiar with IMI software/authoring package.	medium
6. Developer not familiar with target audience.	low
7. Best commercial practices not acceptable.	low
8. Inexperienced project team: IMI designers inexperienced. IMI manager inexperienced. IMI programmer inexperienced.	medium high high
9. Using a beta version of the authoring package.	high
10. No prototype exists, no agreement "up front" on design strategy, no standardized process followed.	high
11. Customer not using objective and consistent acceptance criteria. Customer unsure of what he wants and does not communicate with developer.	high
12. Required resources not in place at start of project.	high

## MIL-HDBK-29612-3

4.11.2.3 Estimating costs for course configuration and maintenance. Table 13 gives examples of the typical kinds of changes often encountered during Interactive Multimedia Instruction development. The Table shows the degree of effort commonly associated with minor, moderate, and major changes. The degree of effort can be used to help the Interactive Multimedia Instruction manager determine if the change will require additional funds to implement. Table 13 is based on a single instance. Multiple instances of the same occurrence will impact the degree of effort involved.

TABLE 13. **Configuration control decision matrix.**

TYPE OF CHANGE	DEGREE OF EFFORT		
	MINOR	MODERATE	MAJOR
Technical	Example: switch position is wrong.	Example: functioning of an entire component must be changed due to an equipment modification.	Example: introduce entire set of new tasks.
Instructional	Example: allow student two tries instead of one.	Example: change one test from multiple choice to true/false.	Example: introduce entire new strategy on how to test.
Media	Example: change font.	Example: add four full-motion video shots.	Example: replace all graphics with video.

4.12 How to plan an in-house Interactive Multimedia Instruction effort. The first step toward delivering a quality Interactive Multimedia Instruction program to the customer is to develop a project plan. Without a well-developed project plan, neither the developer nor customer will know what to expect, when to expect it, or how well it should work. Customer dissatisfaction at product delivery is often due to a lack of communication with the customer during the project. The project plan is a useful tool to use to communicate with the customer. This section describes all of the activities performed during the planning phase of an in-house Interactive Multimedia Instruction program.

4.12.1 Outline the Interactive Multimedia Instruction effort. Procedures for outlining the Interactive Multimedia Instruction development effort are described in this section.

4.12.1.1 Establish a development process. It is important to think through the entire development process and prepare a list of items required for each phase. Table 14 is an example of such a list. Not all the items shown in this Table are needed for every project. Once the items have been selected, briefly document the following information:

- a. Purpose of the item.
- b. Products resulting from the item.
- c. Documentation used in developing the products.
- d. Personnel responsible for the item.
- e. Review and approval process for the item.

MIL-HDBK-29612-3

TABLE 14. Example of a development list.

ITEM	PHASE	ACTION	DESCRIPTION
1	P L A  N N  I N G	Develop a process outline.	Document development process, staffing requirements, and completion schedule.
2		Develop quality control procedures.	Document quality control process and staffing requirements.
3		Prepare the development team.	Make staff assignments and determine resource and training needs.
4	D E S  I G N	Determine course structure.	Segment course objectives into lessons.
5		Define instructional strategies.	Develop basic strategies for multiple lessons.
6		Develop design specifications.	Define lesson components and document format and operation standards.
7		Design databases.	Determine organization of project data bases (graphics library, CMI, and storyboard).
8		Develop lesson designs.	Develop/sequence subordinate objectives, practice items, feedback, and test items.
9		Develop lesson flowcharts.	Plan/sequence individual lesson displays and make initial graphics/video designs.
10	P R O D U C  T I O  N	Develop storyboards.	Fully develop text and narration; fully design graphics and video shots.
11		Produce graphics.	Develop graphics for lesson and store in graphics library database.
12		Initiate lesson programming.	Enter text, graphics, branching logic, etc., from storyboard to create an operational lesson. (Program all non-video lesson segments.)
13		Produce visual material.	Shoot photographs and video of operational equipment, procedures, etc.; select best frames.
14		Record narration.	Record narration using storyboard scripts.
15	P P O R S O T D  U C  T  I O N	Select photographs or video frames.	Review all visual "takes" and select best shot.
16		Edit video.	Perform video editing and create composites.
17		Design video layout.	Plan placement of frames to reduce access time during lesson operation.
18		Review master tape.	Perform quality control for final approval.
19		Update storyboards.	Enter final frame numbers onto storyboard.
20		Complete lesson programming.	Program video-dependent segments of lesson.



## MIL-HDBK-29612-3

4.12.1.2 Determine project deliverables. The project plan should clearly describe what products you will deliver to your customer. The most common Interactive Multimedia Instruction products are:

- a. Interactive Multimedia Instruction treatment plan or course specification.
- b. Storyboards and flowcharts.
- c. Interactive Multimedia Instruction lessons.
- d. Supporting materials.

4.12.1.3 Define staff positions and responsibilities. The make-up of the Interactive Multimedia Instruction development team (see Table 2) depends on the characteristics of the proposed Interactive Multimedia Instruction and the authoring software selected for the project. As part of the project plan, describe the positions and responsibilities of each Interactive Multimedia Instruction team member. Define individual assignments and how team members will work together to produce interim products and final lessons.

4.12.1.4 Develop a master schedule. Develop a master schedule as part of the process outline. Define completion dates for each interim and final Interactive Multimedia Instruction product. The Interactive Multimedia Instruction development team will use this schedule to pace its efforts. Management will use this schedule to track progress on the effort.

4.12.2 Prepare the team. Once the master schedule has been developed and the roles of all team members have been defined, the team needs to be prepared, as follows:

4.12.2.1 Determine training requirements. The key to determining team members' training requirements is to examine their experience. Determine the background of the team. If members do not have Interactive Multimedia Instruction experience, they are likely to need extensive training. If they are Interactive Multimedia Instruction experienced, training on the chosen software package may be needed.

4.12.2.2 Provide documentation. The development team members will need copies of documents that explain how they are supposed to do their jobs. They should also receive documents that are required to develop Interactive Multimedia Instruction, such as the development process outline, quality control procedures, Interactive Multimedia Instruction design specifications, and hardware and software user's manual.

4.12.3 Develop quality control procedures. The last activity performed during the planning phase is to develop the Quality Control (QC) procedures to give to the project team members. The QC procedures should be updated throughout the project to ensure that lessons learned in one part of the project are applied to work remaining to be accomplished. Include the following in the QC procedures:

4.12.3.1 Review and approval process. The review and approval process should be established to make sure that all products meet quality standards. Table 15 provides a suggested review and approval form for tracking review and approval processes. The form should be filled out and attached to each product associated with a lesson. As the product is reviewed and approved, the form should be signed by the approving authority. The form should be complete for each product associated with the lesson. The primary author should date the form to tell the reviewer when the review must be completed. The form should not be signed

## MIL-HDBK-29612-3

until all suggested corrections are made, checked and approved. Unapproved products should be returned to the author for correction.

TABLE 15. Sample format for IMI review and approval.

IMI Review and Approval		Page of Pages			
TITLE/SUBJECT		OPR	DATE		
<b>No.</b>	<b>Item</b>				
Lesson Name:		S U S P E N S E	I N I T I A L S	D A T E	
Primary Author:					
Start Date:					
Final Due Date:					
<b>PRODUCT</b>	<b>REVIEW AND APPROVAL</b>				
Lesson Design	Courseware Developer				
	Instructional Designer				
	Subject Matter Expert				
	Courseware Programmer				
	Graphic Artist				
	Media Production Specialist				
	Quality Specialist				
Lesson Flowchart	Courseware Developer				
	Instructional Designer				
	Subject Matter Expert				
Storyboard	Courseware Developer				
	Instructional Designer				
	Subject Matter Expert				
Programmed IMI Lesson	Courseware Developer				
	Instructional Designer				
	Subject Matter Expert				
	Courseware Programmer				
	Quality Specialist				
	Project Manager				
Comments:					

## MIL-HDBK-29612-3

4.12.3.2 QC team responsibilities. QC is the collected responsibility of the entire development team, and each member has specific review and approval duties. Table 16 shows the general QC responsibilities for each team member. It also shows the importance of the review and approval.

**TABLE 16. QC responsibilities of IMI development team.**

#	FUNCTION	QUALITY CONTROL RESPONSIBILITY	SIGNIFICANCE OF REVIEW AND APPROVAL SIGN-OFF
1	Courseware Developer	Authors an easy-to-understand, technically accurate lesson that is consistent with design documents.	Product has been reviewed and is judged to be satisfactory and consistent with design documents.
2	Instructional Designer	Reviews lesson products for instructional integrity and conformance with design documents.	Product has been reviewed and is judged to be instructionally effective and consistent with design documents.
3	Subject Matter Expert	Reviews lesson products for technical accuracy, currency, and completeness.	Product has been reviewed and is judged to be technically accurate, current, and complete.
4	Courseware Programmer	Programs lessons according to design documents and storyboard instructions. Manipulates graphics according to storyboard instructions.	Operational lesson has been reviewed online and is judged to be "bug"-free and to operate as specified. Static graphics are clear; animated graphics operate as specified and correct video and graphics are called into lesson at the correct location.
5	Graphic or Computer Artist	Develops clear, uncluttered, easy-to-read graphics according to storyboard instructions.	On-line graphics have been reviewed and are judged to be correct, clear, and easy to read.
6	Media Production Specialist	Produces high quality, clear videotape according to shot list and storyboard instructions.	Videotape has been reviewed and is judged to be high quality.
7	Quality Specialist	Reviews lesson products for instructional integrity and conformance with design documents.	Product has been reviewed and is judged to be instructionally effective and consistent with design documents. Operational lessons are user-friendly and consistent.

4.12.3.3 QC job aids. The review checklist is the primary QC job aid. This checklist outlines each product to be reviewed in conjunction with the personnel responsible for each. A separate checklist should be made for each courseware product. Tables 17 and 18 show sample review checklists. Items on the checklists should be modified to reflect requirements in the design documents. IMI job aids may use some of the same information.

MIL-HDBK-29612-3

TABLE 17. Sample format for courseware design

COURSEWARE DESIGN REVIEW		Page of Pages	
TITLE/SUBJECT		OPR	DATE
No.	ITEM		
Reviewer Name: _____			
Review Date: _____			
REVIEW ITEM	COMMENTS	PASS YES	PASS NO
Learning objectives related to lesson objectives			
Learning objectives sequenced properly			
Practice items related to learning objectives			
Practice items at proper difficulty level for anticipated students			
Practice items provide adequate practice on learning objectives			
Practice item feedback identifies correct answer			
Critical learning objectives tested			
Test items related to learning objectives			
Test items at proper difficulty level for anticipated students			
Test item feedback identifies correct answer			
NOTES:			

## MIL-HDBK-29612-3

TABLE 18. Sample format for quality specialist final lesson review.

QUALITY SPECIALIST FINAL LESSON REVIEW		Page of Pages	
TITLE/SUBJECT		OPR	DATE
No.	ITEM		
Reviewer Name: _____			
Review Date: _____			
REVIEW ITEM	COMMENTS	PASS YES	PASS NO
Initiating routing commands accesses correct display			
Lesson routing conforms with design documents			
Text is easy to read and understand			
Graphics are clear and easy to read			
Video scenes match text			
Graphics match text			
Animated graphics appear to work properly			
Title page displays correct lesson title			
Lesson menu is consistent with sections			
Section contents match section titles			
NOTES:			

**4.12.3.4 How to use the review checklists.** Use the review checklists to track the completion of assigned reviews. Have reviewers sign, date, and return the completed checklists to their supervisor. Products judged adequate are approved, and products judged inadequate are returned to the primary author for correction.

## MIL-HDBK-29612-3

4.12.3.5 Documenting the discrepancy process. Discrepancies indicate where products do not meet standards. QC procedures should also provide a means to document discrepancies. Table 19 provides a sample format for recording discrepancies. The form identifies the reviewer, review date, product type, discrepancy report number, lesson name, and discrepancy location. Space is provided to describe the discrepancy and suggest corrective actions, and a signature block showing resolution of the discrepancy.

TABLE 19. **Sample format for a discrepancy report.**

DISCREPANCY REPORT		Page	of	Pages
TITLE/SUBJECT		OPR	DATE	
No.	ITEM			
Reviewer Name: _____ Review Date: _____ Product Type: _____ Discrepancy Report #: _____ Lesson Name: _____ Location of Discrepancy:      Page _____ Paragraph _____ Line _____ Screen _____ Other _____ Discrepancy Description: _____ _____ _____ Suggested Corrective Action: _____ _____ _____				
DISCREPANCY RESOLUTION SIGN-OFF			INITIALS	DATE
Correction Made:				
Correction Verified:				
Discrepancy Closed:				
Discrepancy Remains Open:				
Corrective Action to Close: _____ _____ _____				

## 5. SOURCE MATERIALS FOR INTERACTIVE MULTIMEDIA INSTRUCTION PRODUCTS

5.1 Text. Text is used in IMI to convey information that does not lend itself to a graphical environment. Text may be used to supplement video, audio, graphics, or animation. Text may also be used alone to convey a thought, concept, or idea.

5.2 Audio. Sound is used in Interactive Multimedia Instruction to convey information that does not lend itself to a textual or graphical environment. For some training subject areas, the use of sound is critical for full achievement of learning objectives.

5.2.1 Human hearing. The hearing range of most humans is from approximately 20 hertz at the low end of the frequency spectrum to somewhere between 15 and 20 kilohertz (kHz) at the upper end. A hertz (Hz) is a unit of measure associated with frequency and is equal to one cycle per second; a kilohertz is 1,000 hertz.

5.2.2 Audio technology. Sound, which occurs naturally as an analog waveform, can be converted to digital signals, recorded and stored as a file that can be accessed by a computer. This process is called digitizing. The file can then be controlled by the computer program. It can be edited, otherwise manipulated, and accessed for near-instantaneous output. The output is converted from digital signals back to analog signals and played through output devices, such as speakers.

5.2.2.1 How audio is digitized. Sound is digitized through a process called sampling. At small, discrete time intervals, the computer takes a sample or reading of the waveform and records the frequency. The number of samples taken within a second is the "sampling rate". The more samples that are taken during a second the greater the sampling rate. As the sampling rate increases so does the fidelity, or the faithfulness to the reproduction of the original audio.

5.2.2.2 Audio quality. The higher the sampling rate, the better the quality of the sound. Note however, that sampling higher rates (taking more samples per second) requires greater storage space. The controlling factor should be the quality of sound needed to meet the goals of the education or training. The sampling rate should be twice the highest frequency required. Thus, if a 4 kHz frequency is desired for a voice application, the sampling rate should be 8 kHz or higher.

5.2.3 Technology quick-look. Digital audio is now a standard of multimedia systems. The addition of sound to the visual media capabilities of the computer-based systems is possible because:

- a. Technological progress in Analog-to-Digital Converters (ADC) and Digital-to-Analog Converters (DAC) has made digital audio possible.
- b. Audio recorded as numeric values allows digital computers to capture, manipulate, store, and distribute sound.
- c. Significant advantages of the digital audio system are:
  - (1) Quality of sound is maintained.
  - (2) Control of the audio media is now possible as an integral medium of the computer-based multimedia system.



## MIL-HDBK-29612-3

5.2.4 Digital audio in multimedia. Digital audio adds the true sound dimension to multimedia in its many and varied uses for educators and trainers. Potential uses are essentially limited only by the creativity of the instructor and course designer. Examples of applications and capabilities of digital audio are:

5.2.4.1 Computer control. With digitized sound, a computer treats a sound file just as it does a text file. Editing sound files is similar to editing in word processing programs. Precise control of quality sound to be delivered as part of multimedia programs gives the Interactive Multimedia Instruction designer and the classroom instructor great flexibility in making instruction effective.

5.2.4.2 Sound-critical subject areas. Most education and training programs that cover subjects in which sound is a critical factor are enhanced by the use of digital audio. Some examples are:

- a. Language training, including pronunciation drills by students.
- b. Diagnosing mechanical operations by the sounds produced, such as jet engine runs and motor vehicle tuning.
- c. Providing audible feedback to student inputs, such as simulated radio transmissions to aircrew members rehearsing missions.

5.2.4.3 Recording inputs. Instructors and students can record their own voices or sound inputs on the computer system, storing them for future reference or for providing immediate feedback or practice.

5.2.4.4 Computer presentations in the classroom. Computer-controlled presentations, in the classroom or other audience environment, now include audio as well as visual elements. The computer system becomes a versatile presentation tool for the instructor, replacing other less reliable and unsynchronized systems.

5.2.4.5 Repurposing videodisc programs. Repurposing videodiscs presents a problem in that the audio on the disc is tied to the video and cannot be changed. By implementing digital audio, instructors can use existing video segments and add customized audio to correspond with learning objectives. Digital audio can also be used in conjunction with still frames of a videodisc.

5.2.4.6 Speech therapy. Programs can be used by speech and language therapists to help people with speech impairments. Speech therapy programs digitize and analyze verbal characteristics such as pitch, loudness, and intonation. They also provide exercises on pronunciation, pitch, and speech timing.

5.2.4.7 Music. Digital audio capability on computers has quickly become an important means of creating and teaching music. Major advancements made possible by musical representation standards are covered below. Digitizing music will generally require greater sampling rates due to the greater frequency range of the source audio. Sampling rates of at least 11 or 12 kHz and preferably up to 22 kHz are recommended.

5.2.4.7.1 Additional considerations for music. An international standard protocol for electronic music devices has been developed. It is called Musical Instrument Digital Interface (MIDI) (pronounced "mid-ee"). MIDI allows musical instruments, such as electronic keyboards,

## MIL-HDBK-29612-3

to be connected directly to a computer. MIDI is not digital audio but a means of providing an input that can be recorded digitally.

5.2.5 Examples of frequency ranges. Figure 2 shows the frequency ranges of human hearing and typical audio based media.

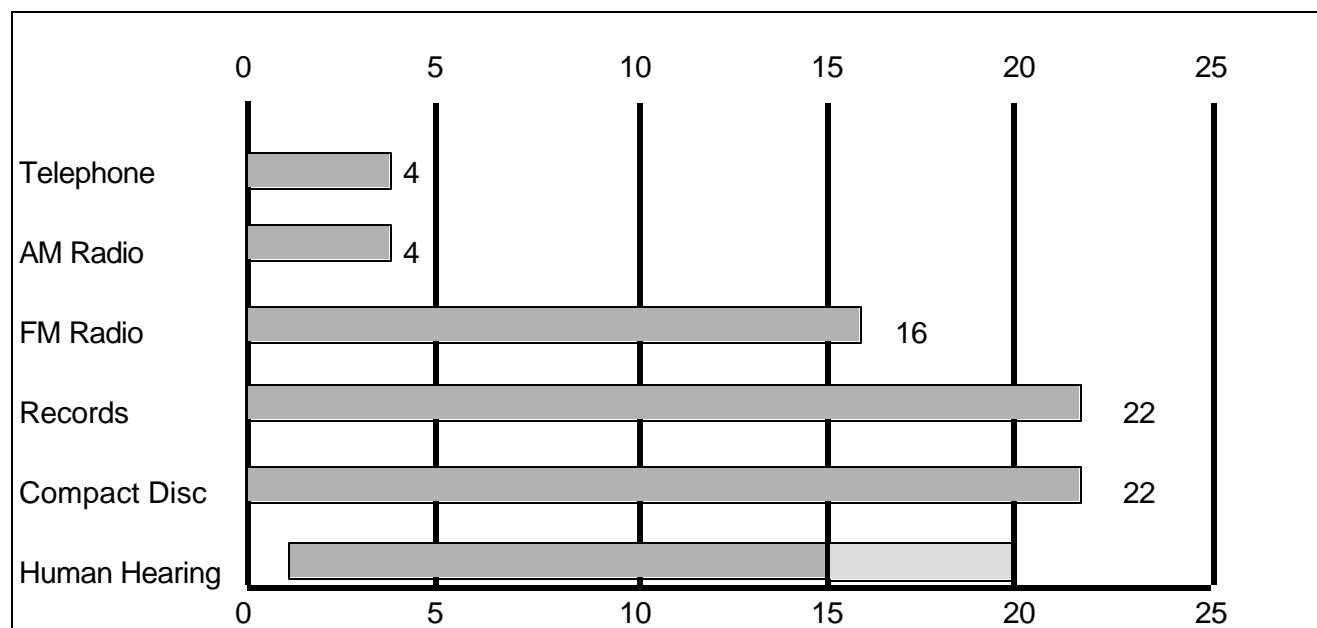


FIGURE 2. Frequency ranges of some media and human hearing in Kilohertz.

5.2.6 Disc storage requirements. Decisions about the quality of digital sound also relate to available storage space. Table 20 illustrates the tradeoff between sampling rates and storage requirements.

TABLE 20. Sampling rates/storage requirements tradeoffs.

SAMPLING RATE	RECOMMENDED FOR:	STORAGE FOR 1 SECOND OF SOUND	SECONDS OF SOUND (Per 1 MB Storage)
22 kHz	Music quality	22 Kilobytes	45 seconds
11 kHz	Other quality	11 Kilobytes	90 seconds
7 kHz	Voice narration	7 Kilobytes	135 seconds
5 kHz	Minimum for voice	5 Kilobytes	180 seconds

5.2.7 Hardware and software considerations. Consider the hardware and software issues related to digital audio in an Interactive Multimedia Instructional system in Table 21.

MIL-HDBK-29612-3

TABLE 21. **Hardware/software considerations.**

<b>HARDWARE/SOFTWARE CONSIDERATIONS</b>	<b>IBM AND COMPATIBLE Personal Computers (PCs)</b>
Audio Recording Requirements	Requires that an audio card be installed or an external audio peripheral be added.
Audio Playback Requirements	Playback uses same audio card or peripheral. Other playback machines must have cards/peripherals compatible with recording machine.
File compression	Optional on many audio cards. Compression of files saves storage but may degrade audio quality.
Speakers/Headphones	Required for output. Most are externally added to system.
Microphones	May be built-in or be externally connected.

5.2.8 Advantages and disadvantages of digital audio. Digital audio offers many features for computer-controlled sounds, but there are limitations to be considered. Table 22 highlights the considerations.

TABLE 22. **Impact of digital audio features.**

<b>FEATURES</b>	<b>IMPACT</b>
Random access	Digital audio enables audio to be retrieved and played instantly (on the order of milliseconds). In most systems, to access the audio, the user simply enters a "Play" command followed by the name of the file.
Ease of editing	Audio files are stored with a file name, just like other computer files. Audio files can be deleted or replaced simply by using normal file command utilities. Tools enable users to cut and paste sounds to edit narration. The process is as easy as using a word processor.
Cost	Moderate-cost, good-quality digital audio computer cards for Microsoft-Disk Operating System (MS-DOS) computers are widely available. Newer Macintosh computers have built-in audio record and play capabilities.
Flexibility	Digital audio (as opposed to analog audio on a videodisc, audio tape or video tape) is not tied to a particular visual segment. Therefore, digital audio can be played in conjunction with any segment of computer generated visual images, if desired.
Limited only by storage space	Analog audio on a videodisc is limited to 60 minutes per side. There is no limit to the amount of digital audio, other than that imposed by the amount of storage space available.

MIL-HDBK-29612-3

TABLE 22. **Impact of digital audio features - Continued.**

FEATURES	IMPACT
Large storage requirements	Audio files require a large amount of disk storage space; one megabyte for 180 seconds of sound sampled at 5 kHz; one megabyte for 45 seconds sampled at 22 kHz.
Large memory requirements	Audio files must often be loaded into RAM first, before playing. A large amount of RAM is essential, to quality playback.
Lack of standardization of hardware	There is a distinct lack of standardization of file formats for digitizing audio (especially for MS-DOS machines). Audio files digitized with one type of audio board usually cannot be played back unless the same type or compatible board is in the delivery hardware.
Difficult to synchronize	Because audio files are usually loaded into RAM before they are heard, the amount of time needed to play a file fluctuates according to file size. This variation makes it very difficult to coordinate the audio with motion video.

5.3 Video. Graphics, images, and video presentations are important parts of multimedia computer programs. A growing demand for interactivity and for the means to manipulate data are spurring progress in the digital capture and storage of the data. A quick look at the capabilities follows:

- a. Capture devices are readily available to digitize inputs:
  - (1) Scanners for print copies of text and graphics, photographs, slides, and other still images.
  - (2) Video digitizers and software to convert analog motion image input from videotape, digital cameras, video cameras, and broadcast television.
- b. Data manipulation and editing devices and software programs are readily available for many specialized applications and processes.
- c. Computers can store, copy, and distribute image data without degradation of the data. Every image is as clear as the first. Data converted into images can be output:
  - (1) Directly to the computer screen for inclusion in multimedia programs.
  - (2) Through other playback devices such as television monitors, printers, or to networks.

5.3.1 The visual element. Educators and trainers have long used visual aids to enhance their teaching of students. From printed text to printed photographic materials to slide shows, films and video, the visual element has been common to transfer of knowledge. Education's adoption of the computer to academic and training tasks has been paced by the emerging technology for computers. The computer industry's ability to digitize visual material is accelerating the use of computer systems for educational purposes.

5.3.1.1 Improved applications. The following educational and training applications of computer technology have benefited from digital image and digital video advancements:

## MIL-HDBK-29612-3

- a. Multimedia courses. The compelling aspect of multimedia, the ability to rapid-access a wealth of stored information, now includes effective visual information.
- b. Instructional development process for classroom courses, illustrated materials, aids.
- c. Research of and input from reference and resource visual databases.
- d. Publishing of illustrated products for student and other uses, including sophisticated copies of student-produced products.
- e. Exporting, networking and other distributive sharing of courses to other student sites.

5.3.1.2 Digital still images. Digital still images (single images, as opposed to a series of images that appear to have motion) are a mainstay of visual information systems used in education and training. Digital still images include photographs, drawings, charts, and other graphics normally found in print form or film.

5.3.1.2.1 Still-image basics. Computer systems work with digital information. The capture and conversion of images from analog to digital form is the necessary first step. Once digitized, the data can be creatively edited or manipulated or combined, then stored, and then output in a means useful to the educator or trainer.

5.3.1.2.2 Capturing still images. The most efficient way to capture still images is with a graphics scanner, a computer peripheral designed to convert print materials into digital data. The scanner works much like a photocopy machine, except that its output is not a paper copy but an image transferred to a computer screen. Once on the screen, the image data can be changed, output to other devices, or stored in the computer memory.

5.3.1.2.3 How a scanner works. With the exception of multi-purpose facsimile machines and portable scanners, most scanners are "flatbed scanners". As in photocopying, the graphic is placed on the glass surface, a light is passed under it, and the resulting signals are readable by a computer. When images or text materials are scanned, the computer sees a collection of dots. The dot is normally called a "pixel". Each pixel can be changed in color, brightness, location, and size. This control of the elements of what the user sees as an image is the greatest advantage offered by the digitization of visuals.

5.3.1.2.4 Scanning slides. Many flatbed scanners offer optional devices for digitizing slides. Specialized slide scanners offer better control and resolution of the image. As with all scanning processes, the quality required by the eventual use of the image is the major factor driving the level of resolution.

5.3.1.2.5 Scanning text. Scanning text into a computer requires the addition of Optical Character Recognition (OCR) software. High-end or specialized scanners often include the software. Until the OCR is added, the computer sees scanned text as pixels, just dark or light dots, not as letters or numbers. Many OCR packages are available; the user pays a price for accuracy and flexibility. Managers must weigh the cost of the OCR-capable scanner with the time saved by not having to re-key the text into the computer.

5.3.1.2.6 Scanner equipment. Scanners come in many shapes and sizes, from inexpensive hand-held models to expensive, high-resolution, color-capable models with OCR software. Some computers require installing an additional card in the computer, then cabling the scanner to the computer. The software required to read the scanned image normally comes with the scanner equipment.

## MIL-HDBK-29612-3

5.3.1.2.7 Frame grabbers. "Frame grabbing" is a useful technique to capture a still photo or one frame of video motion, digitize it and save it on the computer. The input signal goes through the digitizing card and is played in a window on the computer screen. When the wanted frame appears, a keyed command grabs and files it. From this point, the image is a still image and can be worked accordingly.

5.3.1.3 Image resolution. The resolution or clarity level of the image to be scanned into the computer should be based on the eventual use of the image. For example, if it will become a product to be printed on a laser printer, a resolution of 300 Dots-Per-Inch (DPI) would be appropriate. However, if the image will remain a computer product, a resolution of 72 DPI would work. Scanning at higher resolution rates impacts disk storage space.

5.3.1.4 Memory and storage requirements. Scanners require large amounts of RAM to capture images and much storage space to store them (up to a megabyte for some images). These requirements dictate reasonable planning on the number and resolution of images to be scanned. The recommended technique is to scan only the area of the graphic wanted, preview it on the computer screen and make adjustments before saving it to the computer storage.

5.3.1.5 Digital video. As with still images discussed earlier, the digitizing of video images represents a major advancement in computer technology, an advancement of great use to educators and trainers. The capture and use of video images requires converting analog signals to digital data. A review of analog and digital issues, as they relate to video, will be useful at this point.

5.3.1.6 Analog versus digital. Analog video systems have been successful since their development in the 1930s. There was little consideration to converting television and the supporting video technologies from analog to digital formats until it could be proven that the digital technology offered economic and other outweighing advantages. Technology is currently transitioning from analog to digital video. Table 23 identifies some of the important aspects of analog and digital systems applied to video.

## MIL-HDBK-29612-3

TABLE 23. **Contrasting video technologies.**

<b>ANALOG</b>	<b>DIGITAL</b>
Materials are in continuous form. Data is in waveform, cycling and flowing.	Views everything in discrete individual values.
Represents materials as continuous electrical signals.	Represents analog materials by sampling, recording precise values at each sampled point, and presenting the series of data points as very close approximations of the natural images.
Analog data can have any degree of brightness, and infinite numbers of colors, shades, values.	Digital data are precise values, each represented by a combination of on/off electrical impulses. An example of a limitation: Video Graphics Array (VGA) boards are limited to 256 colors.
TV cameras convert images to continuous electrical signals. TV onitors deliver images by varying the intensity of light beams on the screen, giving the illusion of motion and unlimited colors.	Digitizing video has become possible as technology has developed ADC and DAC converters, large storage capacities in magnetic and optical disc media.

5.3.1.7 How video is digitized. To digitize video from a camcorder, videotape, videodisc, or broadcast television, the input signal must be processed through a digitizing card added to the computer, or through a peripheral. This converts the analog video signals into digital bits of information for each pixel (picture element) of the computer screen. The software that comes with the digitization cards controls the process. Video images can be filed from the screen to the hard disk (which requires a large storage space) or can be output for playback or transmission to other devices, such as a printer.

5.3.1.8 Difficulties in digitizing video. The difficulties still challenging the industry in the digitization of video are in these areas:

- Acceptable range of colors and shades. Limited variation in colors and shades makes digital images appear to not blend well. Some images appear to have sharp, striped edges.
- Sufficient memory and storage capability. Digital images (and sound) require large amounts of memory for processing and storage of digital data. The current compromise of recording data at lower quality levels is not always satisfactory.
- Data transfer rates. Large digital files are difficult to display on the computer screen at the standard rate of 30 Frames Per Second (FPS), the accepted "full-motion" rate.

5.3.1.9 The impetus for digitizing video. Industry is committed to overcoming the difficulties in digitizing video for these reasons:

- Error-free format. Digital systems, based on few, discrete values (usually 1 and 0), can reproduce and transmit data error-free.
- Potential for interactivity. Digital systems, incorporating the excellent control capabilities of the computer, provide more intricate branching and integration



## MIL-HDBK-29612-3

possibilities. The result is systems that are largely individually tailored. The user is given a degree of control.

- c. Ease of manipulation. Digital data may be resized, the color modified, be repositioned, and duplicated with relative ease and without the high costs of analog video editing equipment.
- d. Durability. Digital data can be reproduced without any loss of quality. No "noise" ("snow" in video or "hiss" in audio) is introduced into copies. This is important when transmitting data over a network, such as in networked classrooms and local area networks at training facilities, or between them and students across the base.

**5.3.1.10 Current status and near-term changes.** Education and training managers must note that the television broadcasting industry is converting to High Definition Television (HDTV) and digital format. The Federal Communications Commission (FCC) has been testing various HDTV systems proposed by industry. The four industry competitors have agreed to form an alliance, essentially merging aspects of all proposals. The FCC has told all broadcast operators to have some HDTV broadcast capability by the year 2000. The full transition is forecast by 2010. Video technology essentially follows television technology. The developing standards will focus emerging digital video technologies. The impact on education and training is a natural follow-on. Note to managers: Keep the national-level industry dealings in mind for decision making that has impacts 5 to 15 years into the future.

**5.3.2 Motion video-in-a-window.** The size of a digital video file on a computer's hard disk may prevent it from being played in full motion (a rate of 30 FPS). There is a technique for displaying full motion video without saving it to the drive. Known as "video-in-a-window," the technique uses a real-time video display card to digitize and display motion video at the full-motion rate, directly from the analog source. Video-in-a-window does not save the video.

**5.4 Graphics.** Graphics (also called imagery) is a term used to denote any of the following:

- a. A visual representation of an idea, object, or other factors, shown by means of lines, marks, shapes, and symbols. A still picture, illustration, symbol, shape, or other visual image.
- b. A simple graphic is one equal to line drawings and outlines.
- c. A complex graphic is a visual expression that more closely represents a photograph.
- d. A visual image (graphics) generated by a computer. A computer display of symbols, shapes, and other images (e.g., charts, graphs, line drawings, illustrations, equipment panels, animation, 3D).
- e. A visual or artwork prepared for a production.
- f. Any pictorial representation (e.g., drawings, patterns, graphs, charts, or borders).

**5.5 Animation.** The simulation of movement produced by displaying a series of successive images on the screen. In computer graphics, animation can be accomplished in several ways, depending on the tools provided by the programmer's choice of programming language and on the working environment. One approach to animation involves drawing an image and then erasing it and redrawing it in a slightly different place on the screen. Another approach makes use of the creation of entire screen frames (pages), which are drawn in memory and displayed in sequence on the screen. Yet another uses built-in screen-management tools that enable the programmer to specify an object, a starting point, and a destination, leaving the process of movement to the underlying software. Animation can be



## MIL-HDBK-29612-3

generated either in real time, in which each frame is created as the viewer watches, or in simulated time. In the latter, the computer generates still frames, which are then printed and photographed or are sent to a film or video animation camera. In this way, a computer can spend seconds, minutes, or hours generating each frame, but on replay the tape or film displays each frame in a fraction of a second. For successful animation sequences, images must replace one another rapidly enough to see continuous movement, that is at least 14 FPS.

## 6. INTERACTIVE MULTIMEDIA INSTRUCTION PRODUCT DEVELOPMENT

**6.1 Interactive Multimedia Instruction products.** This section describes the products of Interactive Multimedia Instruction which include ICW, electronic management tools (e.g., CAI, CMI, EPSS, and job aids), electronic testing, electronic publications, and simulation. The first step toward the development of an Interactive Multimedia Instruction product should be planning. See Section 4 for details on Interactive Multimedia Instruction planning.

**6.1.1 ICW.** ICW is computer controlled courseware that relies on student input to determine the pace, sequence, and content of training delivery using more than one type medium to convey the content of instruction. ICW can link a combination of media, to include but not be limited to; programmed instruction, video tapes, slides, film, television, text, graphics, digital audio, animation, and up to full motion video, to enhance the learning process. ICW is one of the more complex components of the Interactive Multimedia Instruction family, and has the capability for providing excellent training in a variety of instructional settings.

**6.1.1.1 ICW design.** When designing ICW, products from the ISD/SAT process such as task lists, lists of learning objectives, media analysis data, and target audience analysis results will be used. This section contains guidance on how to develop the ICW specification, determine instructional strategies, determine CMI and testing strategies, and develop flowcharts and storyboards. Remember to think visually.

**6.1.1.2 Develop the ICW specification.** The ICW course/lesson specification describes in general terms how the ICW will look and function. This section describes how to develop the ICW specification.

**6.1.1.2.1 Purpose of ICW specification.** There are many purposes for the course/lesson specification. The ICW design team uses it to guide their efforts in meeting the customer's needs. It serves as a vehicle to get the customer to "buy in" to the ICW efforts. If the customer does not agree with the approach as described in the design specification, changes can be made to the strategy that will not affect work already completed (like storyboards or programmed lessons). The design specification describes what is considered the "best approach" for presenting the ICW instruction.

**6.1.1.2.2 Level of detail in the ICW specification.** The most important aspect of the course/lesson specification is the amount of detail it should contain. Keep it short and sweet! If it takes more than 20 pages to describe how the course will look and function at this point, things have not been thought-out thoroughly enough. The specification is like an executive summary of the ICW, not a detailed description.

**6.1.1.2.3 Content of the ICW specification.** The specification should include:

- a. An overview of the content of the course (course objectives).

MIL-HDBK-29612-3

- b. A brief description of the instructional strategy. This is a very important aspect of ICW design. This section describes in detail how to determine the ICW instructional strategies.
- c. A high-level description of how the ICW will work from the student's perspective. Take the task data and determine the number of modules and lessons that will be required to support the learning objectives. List the modules by name that will make up the course and break the modules into lessons, and give a name to each lesson. Remember, in the ICW design specification a lot of detail is not needed, just enough information to give developers and customers a "feel" for the ICW. A top-level flowchart is a useful way to describe how the ICW will work from the student's point of view. Figure 3 provides a sample of the organization of a typical ICW course.

MIL-HDBK-29612-3

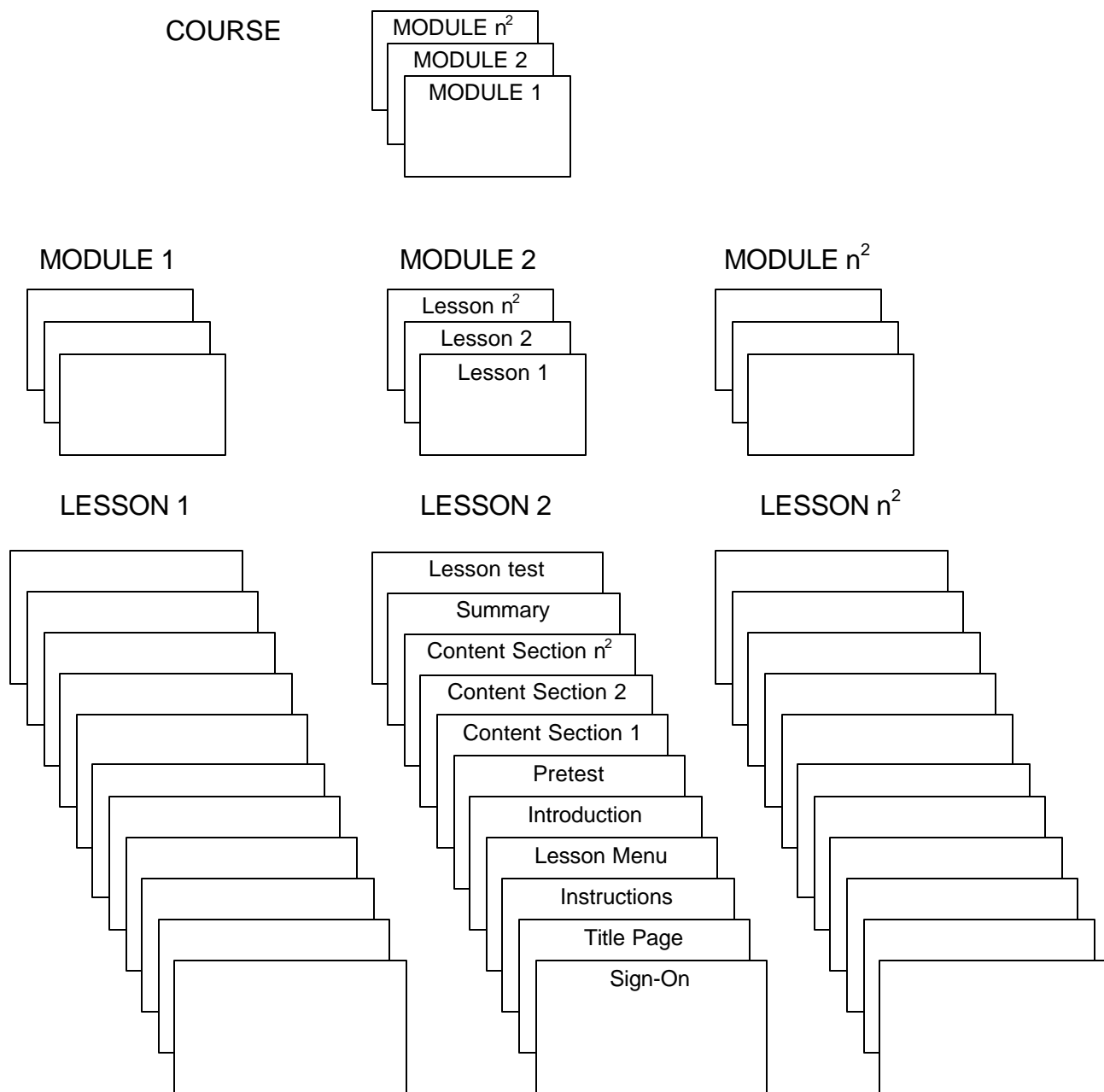


FIGURE 3. Sample ICW course organization.

## MIL-HDBK-29612-3

6.1.1.3 Determine the level of interactivity. Interactivity involves two way communication between the courseware and a user. The following paragraphs provide guidance and tools that may be used in determining the interactivity needed to support the effective achievement of LOs.

6.1.1.3.1 Levels of learning. Each learning objective is categorized as a learning type (e.g., knowledge, skill, or attitude). Table 24 is a job aid and indicates that each of the learning types is further classified by levels of learning (e.g., fact learning, rule learning, etc.) and indicates the action verb associated with each level of learning. The learning objective category and level of learning affect the design of lessons in terms of instructional strategy, instructional activities, level of interactivity, and performance measurement. Compare the LO action verb with the action verb/learning type/level of learning listed in Table 24 to aid in determining the level of learning associated with the LO.

**TABLE 24. Job aid for determining levels of learning.**

<b>KNOWLEDGE</b>				
Verbs			Learning Levels	Definition
Advise	Identify	Recommend	Fact Learning	Verbal or symbolic information. (e.g., names, formulas, facts).
Answer	Inform	Recount		
Brief	Instruct	Specify		
Calculate	List	State		
Define	Name	Tell		
Elaborate	Read			
Express	Recall			
Appraise	Encrypt	Forward	Rule Learning	Using two or more facts in a manner that provides regularity of behavior in an infinite variation of situations.
Compile	Estimate	Measure		
Compose	Evaluate	Outline		
Compute	Format	Route		
Check	Implement	Set up	Procedure Learning	Performing step-by-step actions in the proper sequence.
Condense	Initiate	Start		
Edit	Pause	Stop		
Delete	Resume			
Allocate	Discriminate	Redistribute	Discrimination Learning	Grouping similar and dissimilar items according to their distinct characteristics.
Arrange	Distinguish	Reexamine		
Assign	Distribute	Reorganize		
Categorize	Divide	Restate		
Classify	Eliminate	Schedule		
Collate	Extract	Select		
Compare	Finalize	Separate		
Confirm	Group	Sort		
Consolidate	Label	Task		
Contrast	Level	Template		
Correlate	Match	Translate		
Cross-check	Organize	Tune		
Designate	Rank			
Differentiate	Realign			

MIL-HDBK-29612-3

TABLE 24. Job aid for determining levels of learning - Continued.

KNOWLEDGE - continued				
Verbs			Learning Level	Definition
Analyze	Discover	Plan	Problem Solving	Synthesizing lower levels of knowledge for the resolution of problems.
Annotate	Draft	Predict		
Apply	Effect	Produce		
Change	Explain	Project		
Combine	Extend	Resolve		
Conclude	Find	Revise		
Convert	Generalize	Search		
Create	Generate	Solve		
Criticize	Hypothesize	Summarize		
Decide	Illustrate	Synthesize		
Defend	Infer	Triage		
Derive	Investigate	Use		
Design	Locate	War game		
Determine	Manipulate			
Diagram	Modify			
SKILLS				
Verbs			Learning Level	Definition
Detect	Scan	Taste	Perception (Encoding)	Sensory stimuli that translate into physical performance.
Feel	See	Visualize		
Hear	Smell			
Assault	Jump	Throw	Gross Motor Skills	Manual dexterity in the performance of physical skills.
Carry	Lift	Turn		
Creep	Pull	Twist		
Depart	Run	Wear		
Fall	Stay			
Hold	Swim			
Advance	Hover	Steer	Continuous Movement	Tracking or making compensatory movements based on feedback.
Control	Land	Take off		
Follow	Maneuver	Track		
Guide	Regulate	Traverse		
Able	Delay	Ready	Readiness	Having readiness to take a particular action.
Assist	Guard	Set		
Challenge	Prepare	Stand to		
Cross	Prime			

MIL-HDBK-29612-3

TABLE 24. Job aid for determining levels of learning - Continued.

SKILLS - continued				
Verbs			Learning	Definition
Access	Exchange	Record	Mechanism	Performing a complex physical or mental skill.
Activate	Fill out	Reestablish		
Actuate	Fire	Refuel		
Adjust	Fit	Release		
Administer	Fuel	Relocate		
Align	Ground	Remove		
Archive	Harden	Repair		
Arm	Hoist	Replace		
Assemble	Initialize	Replenish		
Attach	Input	Reset		
Balance	Insert	Retrieve		
Breach	Inspect	Return		
Calibrate	Install	Rotate		
Camouflage	Integrate	Save		
Center	Intercept	Secure		
Charge	Isolate	Send		
Clean	Issue	Service		
Clear	Jack	Shut down		
Close	Launch	Sight		
Collect	Load	Signal		
Connect	Log	Splint		
Cover	Lubricate	Squeeze		
Debrief	Maintain	Stockpile		
Debug	Manage	Store		
Decontaminate	Mount	Stow		
Deliver	Move	Strike		
Destroy	Navigate	Submit		
Diagnose	Obtain	Supervise		
Dig	Open	Support		
Disassemble	Operate	Sweep		
Disconnect	Order	Take		
Disengage	Park	Take charge		
Dismantle	Perform	Tap		
Dispatch	Place	Test		
Displace	Plot	Tighten		
Display	Police	Trace		
Dispose	Position	Transfer		
Disseminate	Post	Transmit		
Drive	Press	Transport		
Egress	Pressurize	Treat		
Elevate	Process	Troubleshoot		
Emplace	Procure	Type		
Employ	Provide	Unload		
Engage	Publish	Update		
Energize	Raise	Utilize		
Enter	Range	Write		
Establish	Reach	Zero		
Evacuate	Receive			

## MIL-HDBK-29612-3

TABLE 24. Job aid for determining levels of learning - Continued.

SKILLS - Continued				
Verbs			Learning level	Definition
Acclimatize	Infiltrate	Protect	Adaptation	Modifying a complex physical or mental skill to accommodate a new situation.
Accommodate	Lay	Queue		
Adapt	Lead	Reconcile		
Ambush	Map	Recover		
Attack	Neutralize	Reduce		
Bypass	Occupy	Relieve		
Conduct	Orient	Suppress		
Deploy	Pack	Tailor		
Direct	Patrol	Temper		
Draw	Prevent	Train		
Evade	Program			
Cause	Correct	Make	Origination	Creating a new complex physical or mental skill to accommodate a new situation.
Construct	Initiate	Originate		
Contrive	Invent			
ATTITUDES				
Verbs			Learning level	Definition
Attend closely	Observe	Show	Receiving (Perception; Situation Awareness)	Demonstrating mental preparedness to perceive the normal, abnormal, and emergency condition cues associated with the performance of an operational procedure.
Listen	Perceive	awareness		
Listen attentively	Recognize	Show		
Monitor	Reconnoiter	sensitivity		
		Wait		
Accomplish	Comply	Obey rules	Responding (Interpreting)	Demonstrating mental preparedness to encode operational cues as indicators of normal, abnormal, and emergency conditions associated with the performance of an operational procedure.
Achieve	Demonstrate	React		
Acknowledge	Describe	Report		
Announce	Encode	Request		
Ask	Execute	Respond		
Communicate	Give	Resume		
Complete	Indicate	Show		
Complete assignment	Interpret			
	Notify			
Alert	Choose	Review	Valuing (Judgment)	Demonstrating the ability to judge the worth or quality of normal, abnormal, and emergency cues associated with the performance of an operational procedure.
Appreciate	Judge	Share		
Approve	Justify	Study		
Assess	Prioritize	Validate		
Authenticate	Propose	Verify		
Belief	Qualify			
Cancel	Reassess			
Allow	Ensure		Competence (Application of resource management strategies and tactics.)	Demonstrating the mental preparedness to make decisions using prioritized strategies and tactics in response to normal, abnormal, and emergency condition cues associated with the performance of operational procedures.
Alter	Influence			
Assume	Prescribe			
Command	Serve			
Coordinate				
Enforce				

6.1.1.3.2 Hierarchy of learning. Lessons are developed to support LOs that reflect different types and levels of learning. In constructing lessons, facts should be taught before rules, and rules should be taught before discrimination. In other words, lower levels of learning (i.e., facts, rules) should be taught before higher levels of learning (i.e., problem solving).

## MIL-HDBK-29612-3

Compare the LO action verb with the action verb/learning type/level of learning listed in Table 24 to aid in developing the hierarchy of learning.

6.1.1.3.3 Sequencing of learning objectives. The hierarchy of LOs ensures a complete list of LOs made up of each type and learning level required. The sequence of LOs combines the types and levels of LOs in a teachable arrangement. Groups of facts may be taught leading to the teaching of a set of rules or procedures and terminating in discriminations or problem solving. Related LOs from each of the other types of learning are inserted into the sequence as appropriate.

6.1.1.3.4 ICW presentation category selection. ICW presentation categories range from linear formatted (page turner) to real-time simulation presentations. In determining the most appropriate presentation category to support a LO, the following process will be helpful:

- a. Match the level of interactivity with the level of learning (e.g., fact learning, rule learning, etc.) associated with the LO.
- b. Identify the sensory stimulus requirements.
- c. Select the instructional delivery mode (e.g., exportable ICW, ICW supporting training, network, etc.) based on the required level of interactivity.
- d. Match the required level of interactivity, sensory stimulus requirements, and delivery mode with the appropriate category of ICW presentation.

6.1.1.3.4.1 Levels of interactivity. Interactivity is the degree of student involvement in the instructional activity. Descriptions of the four levels of interactivity are provided in Table 25.

TABLE 25. **Levels of interactivity.**

LEVEL	DESCRIPTION
Level 1 - Passive.	The student acts solely as a receiver of information.
Level 2 - Limited participation.	The student makes simple responses to instructional cues.
Level 3 - Complex participation.	The student makes a variety of responses using varied techniques in response to instructional cues.
Level 4 - Real-time participation.	The student is directly involved in a life-like set of complex cues and responses.

6.1.1.3.4.2 Levels of learning and levels of interactivity. Using Table 24, select the level of learning based on the action verb contained in the LO. Match the level of learning with the appropriate level of interactivity using Table 26.



MIL-HDBK-29612-3

TABLE 26. Interactivity levels and associated levels of learning.

INTERACTIVITY LEVEL	INTERACTIVITY LEVEL DESCRIPTION	KNOWLEDGE	SKILLS	ATTITUDES
LEVEL 1 INTERACTIVITY  PASSIVE	<p>Capable of computer-generated multimedia presentations of intellectual skills (facts, rules, procedures).</p> <p>Capable of showing a procedure with computer-generated multi-media explanations of equipment operation.</p> <p>Student interaction limited to those required to advance with the presentation.</p>	<p><u>Fact Learning.</u> The learning of verbal or symbolic information (e.g., names, formulas, facts).</p> <p><u>Rule Learning.</u> Learning to use two or more facts in a manner that will provide regularity of behavior in an infinite variation of situations.</p>	<p><u>Perception (Encoding).</u> Perception of sensory stimuli that translate into physical or mental performance.</p>	
LEVEL 2 INTERACTIVITY  LIMITED PARTICIPATION	<p>Capable of providing drill and practice.</p> <p>Capability for providing feedback on student responses.</p> <p>Capability for emulation of simple psychomotor performance.</p> <p>Capability to emulate simple equipment operation in response to student action.</p> <p>Computer evaluation of student intellectual skills by computer -based predictive and performance test items.</p>	<p><u>Fact Learning.</u> The learning of verbal or symbolic information (e.g., names, formulas, facts).</p> <p><u>Rule Learning.</u> Learning to use two or more facts in a manner that will provide regularity of behavior in an infinite variation of situations.</p> <p><u>Procedure Learning.</u> Learning to perform step by step actions in the proper sequence.</p>	<p><u>Perception (Encoding).</u> Perception of sensory stimuli that translate into physical or mental performance.</p> <p><u>Readiness.</u> Learning to have readiness to take a particular action.</p> <p><u>Guided Response.</u> Learning of a complex physical or mental skill by copying a demonstration.</p>	<p><u>Receiving.</u> Learning and demonstrating the ability to perceive the normal, abnormal, and emergency condition cues associated with the performance of an operational procedure. Situational Awareness of operational condition cues.</p> <p><u>Responding.</u> Learning and demonstrating mental preparedness to encode operational cues as indicators of normal, abnormal, and emergency conditions associated with the performance of an operational procedure.</p>

## MIL-HDBK-29612-3

TABLE 26. Interactivity levels and associated levels of learning - Continued.

INTERACTIVITY LEVEL	INTERACTIVITY LEVEL DESCRIPTION	KNOWLEDGE	SKILLS	ATTITUDES
LEVEL 3 INTERACTIVITY  COMPLEX PARTICIPATION	<p>Capable of providing complex branching paths based on student selections and responses.</p> <p>Capable of presenting or emulating complex procedures with explanations of equipment operation.</p> <p>Capability for student participation in emulation of psychomotor performance and extensive branching capability</p> <p>Capability for limited real-time simulation of performance in the operational setting.</p> <p>Computer evaluation of student performance and intellectual skills by computer-based predictive and performance test items.</p> <p>Computer evaluation of student procedural performance includes the capability to generate time and error scores for performance test items.</p>	<p><u>Procedure Learning.</u> Learning to perform step by step actions in the proper sequence.</p> <p><u>Discrimination Learning.</u> Learning to group similar and dissimilar items according to their distinct characteristics.</p> <p><u>Problem-Solving.</u> Learning to synthesize lower levels of knowledge for the resolution of problems.</p>	<p><u>Perception (Encoding).</u> Perception of sensory stimuli that translate into physical or mental performance.</p> <p><u>Readiness.</u> Learning to have readiness to take a particular action.</p> <p><u>Guided Response.</u> Learning of a complex physical or mental skill by copying a demonstration.</p> <p><u>Mechanism.</u> Learning to perform a complex physical or mental skill with confidence and proficiency.</p> <p><u>Adaptation.</u> Learning to modify a complex physical or mental skill to accommodate a new situation.</p> <p><u>Origination.</u> Learning to create a new complex physical or mental skill to accommodate a new situation.</p>	<p><u>Receiving.</u> Learning and demonstrating the ability to perceive the normal, abnormal, and emergency cues associated with the performance of an operational procedure. Situational Awareness of operational cues.</p> <p><u>Responding.</u> Learning and demonstrating the mental preparedness to encode operational cues as indicators of normal, abnormal, and emergency conditions associated with the performance of an operational procedure.</p> <p><u>Valuing.</u> Learning and demonstrating the ability to judge the worth or quality of normal, abnormal, and emergency cues associated with the performance of an operational procedure.</p> <p><u>Competence.</u> Learning and demonstrating the mental preparedness to make decisions by using prioritized strategies and tactics in response to normal, abnormal, and emergency condition cues associated with the performance of an operational procedure.</p>

## MIL-HDBK-29612-3

TABLE 26. Interactivity levels and associated levels of learning - Continued.

INTERACTIVITY LEVEL	INTERACTIVITY LEVEL DESCRIPTION	KNOWLEDGE	SKILLS	ATTITUDES
LEVEL 3 INTERACTIVITY  COMPLEX PARTICIPATION (continued)			<u>Continuous Movement.</u> Learning to track or make compensatory movements based on feedback.	<u>Innovation.</u> Learning and demonstrating the mental preparedness to make decisions by generating the results expected upon completion of prioritized strategies or tactics in response to normal, abnormal, and emergency cues associated with the performance of an operational procedure, and the ability to generate new prioritized strategies and tactics in response to abnormal or emergency cues.
LEVEL 4 INTERACTIVITY  REAL-TIME PARTICIPATION	<p>Capability for real-time simulation of performance in the operational setting.</p> <hr/> <p>Computer evaluation of student performance and intellectual skills by computer-based predictive and performance test items.</p> <hr/> <p>Computer evaluation of student procedural performance includes the capability to generate time and error scores for performance test items.</p> <hr/> <p>Employs state-of-the-art technology for simulation and communication.</p> <hr/>	<p><u>Discrimination learning.</u> Learning to group similar and dissimilar items according to their distinct characteristics.</p> <p><u>Problem-Solving.</u> Learning to synthesize lower levels of knowledge for the resolution of problems.</p>	<p><u>Mechanism.</u> Learning to perform a complex physical or mental skill with confidence and proficiency.</p> <p><u>Adaptation.</u> Learning to modify a complex physical or mental skill to accommodate a new situation.</p> <p><u>Origination.</u> Learning to create a new complex physical or mental skill to accommodate a new situation.</p> <p><u>Continuous Movement.</u> Learning to track or make compensatory movements based on feedback.</p>	<p><u>Receiving.</u> Learning and demonstrating the ability to perceive the normal, abnormal, and emergency cues associated with the performance of an operational procedure. Situational Awareness of operational cues.</p> <p><u>Responding.</u> Learning and demonstrating the mental preparedness to encode operational cues as indicators of normal, abnormal, and emergency conditions associated with the performance of an operational procedure.</p> <p><u>Valuing.</u> Learning and demonstrating the ability to judge the worth or quality of normal, abnormal, and emergency cues associated with the performance of an operational procedure.</p>

## MIL-HDBK-29612-3

TABLE 26. Interactivity levels and associated levels of learning - Continued.

INTERACTIVITY LEVEL	INTERACTIVITY LEVEL DESCRIPTION	KNOWLEDGE	SKILLS	ATTITUDES
LEVEL 4 INTERACTIVITY  REAL-TIME PARTICIPATION (continued)				<p><u>Competence.</u> Learning and demonstrating the mental preparedness to make decisions by using prioritized strategies and tactics in response to normal, abnormal, and emergency condition cues associated with the performance of an operational procedure.</p> <p><u>Innovation.</u> Learning and demonstrating the mental preparedness to make decisions by generating the results expected upon completion of prioritized strategies or tactics in response to normal, abnormal, and emergency cues associated with the performance of an operational procedure, and the ability to generate new prioritized strategies and tactics in response to abnormal or emergency cues.</p>

6.1.1.3.4.3 Sensory stimulus requirement. Using MIL-HDBK-29612-2, Section 7, identify the sensory stimulus requirement necessary to support LOs. Assign a cost factor (low, medium, high) to each sensory stimulus requirement. The cost factors include:

- Low. Commercially available or Government furnished materials (i.e., graphics, animation, audio recordings, digital video recordings, photography, etc.). Costs are limited to physical integration into courseware.
- Medium. Original materials or adaptation of existing materials required. Limited amount of resources required to produce. For example, two-dimensional graphics will probably be in the medium cost category.
- High. Development of original materials is required. Complex effort and more resources required to develop than medium. For example, high fidelity computer generated graphics will probably be in the high cost category.

6.1.1.3.4.4 Identify instructional delivery mode and impact. The instructional delivery mode is the environment or instructional setting, (e.g., electronically distributed, instructor led, etc.) in which the ICW will be used. The following questions are cumulative in nature. When the

## MIL-HDBK-29612-3

answer to the last question has been derived use Table 27 to identify the impact on resources required for ICW development:

- a. Who are the users?
- b. Where will the ICW be used (e.g., classroom, on the job, overseas, etc.)?
- c. How will the ICW be delivered (e.g., stand-alone PC, in support of instructor led presentations, integrated into a training device, embedded in operational systems, electronic distribution, active on-line multiple interactive users, etc.)?
- d. What is the impact of the delivery mode on the IMI courseware package development costs?

**TABLE 27. Instructional delivery mode cost impact.**

<b>IMPACT</b>	<b>CHARACTERISTICS</b>	<b>RATIONALE</b>
LOW	Stand-alone PC.	Costs limited to courseware development and software necessary to run the courseware.
MEDIUM	Integrated into a training device or support of instructor led presentations.	Additional ICW programming costs for integration.
HIGH	Active, on-line, multiple interactive users.	Extensive additional programming costs.

6.1.1.3.4.5 ICW presentation categories. Table 28 provides descriptions of the different categories of ICW presentations. These descriptions are useful in determining the scope and development cost for different categories of ICW presentations.

MIL-HDBK-29612-3

TABLE 28. **Categories of ICW presentation.**

<b>CATEGORY</b>	<b>DESCRIPTION</b>
Category 1 - Low Grade Presentation	This is the lowest (baseline) category of ICW development. It is normally a knowledge or familiarization lesson, provided in a linear format (one idea after another). Category 1 is primarily used for introducing an idea or concept. The user has little or no control over the sequence and timed events of the lesson material. Minimal interactivity is provided by selective screen icons and inserted into the lesson through typical input/output peripherals and programming protocols. This category may include simple developed graphics and/or clip art, customer provided video and audio clips.
Category 2 - Medium Grade Presentation	This category involves the recall of more information than a Category 1 presentation and allows the student more control over the lesson's scenario through screen icons and other peripherals, such as light pens or touch screens. Typically Category 2 is used for non-complex operations and maintenance lessons. Simple emulations or simulations are presented to the user. As an example, the user is requested to rotate switches, turn dials, make adjustments, or identify and replace a faulted component as part of a procedure. This category also may include simple to standard developed graphics, and/or clip art, and customer provided video and audio clips.
Category 3 - High Simulation Presentation	This category involves the recall of more complex information (compared to Categories 1 and 2) and allows the user an increased level of control over the lesson scenario through peripherals such as light pen, touch screen, track ball, or mouse. Video, graphics, or a combination of both are presented simulating the operation of a system, subsystem, or equipment to the user. The lesson scenario training material typically is complex and involves more frequent use of peripherals to affect a transfer of learning. Operation and maintenance procedures are normally practiced with Category 3 scenarios and students may be required to alternate between multiple screens to keep pace with the lesson material. Multiple software branches (two to three levels) and rapid response are provided to support remediation. Emulations and simulations are an integral part of this presentation. This category may also include complex developed graphics, and/or clip art, and customer provided video and audio clips.
Category 4 - Real-time Simulation Presentation	This ICW category involves more in-depth recall of a larger amount of information (compared to Categories 1, 2, and 3) and allows the user an increased level of control over the lesson. Every possible subtask is analyzed and presented with full, on-screen interaction, similar to the approach used in aircraft simulator technology. The lesson material is extremely complex and involves more frequent use of peripherals to affect the transfer of learning. This category normally supports certification, recertification or qualification requirements. Complicated operation and maintenance procedures are normally practiced with Category 4 and involves all of the elements of Categories 1, 2, and 3 presentations plus the following: <ul style="list-style-type: none"> <li>• High degree of interactivity.</li> <li>• Extensive branching (four or more levels).</li> <li>• Levels of sophistication - short of artificial intelligence.</li> </ul>

## MIL-HDBK-29612-3

6.1.1.3.4.6 Considerations for ICW presentation category selection. The categories of presentation are initially derived from the level of interactivity related to the learning objective. This drives the complexity of the computer programming. Typically, presentation category 1 would use level 1 interactivity with simple visuals and basic instructional delivery mode. In special situations, a level 1 interactivity may require complex visual (i.e., high fidelity computer generated graphics, space photography, etc.) and complex instructional delivery mode (i.e., flight simulator, etc.). The category of presentation must be selected based on a common sense balancing of the level of interactivity, complexity of the visual requirements, and complexity of the instructional delivery mode.

6.1.1.3.4.7 ICW presentation category selection data consolidation. Table 29 provides a useful tool for recording decisions concerning the selection of the ICW presentation category for each learning objective. After recording decisions concerning the levels of learning, levels of interactivity, sensory stimulus requirements, and instructional delivery mode, identify and record the category of ICW presentation in Table 29.

**TABLE 29. Job Aid - ICW presentation category selection data consolidation.**

<b>JOB AID - ICW PRESENTATION CATEGORY SELECTION</b>					
<b>LO No.</b>	<b>LEVEL OF LEARNING</b>	<b>LEVEL OF INTERACTION</b>	<b>SENSORY STIMULI/ COST FACTOR</b>	<b>INSTRUCTIONAL DELIVERY MODE/ COST FACTOR</b>	<b>CATEGORY OF ICW PRESENTATION</b>
1.1	Fact	Level 2	Graphic/ Low	Exportable/ Medium	Category 2
1.2					
1.3					
1.4					
2.1					
2.2					
2.3					
2.4					
2.5					
3.1					
3.2					
3.3					
3.4					
3.5					
3.6					

6.1.1.3.4.8 Guidelines for increasing interactivity. A key feature of ICW is that it provides the opportunity to involve the student in a training program. It is important to design as much meaningful interaction as possible into an ICW program. Table 30 presents guidelines for increasing interactivity in ICW training programs.

## MIL-HDBK-29612-3

TABLE 30. Guidelines for increasing user interactivity.

GUIDELINE DESCRIPTION	RATIONALE
Provide opportunities for interaction at least every three or four screens or, alternatively, about one per minute. However, mandatory interaction with the computer should not be superficial.	Without interaction, the program is just a fancy electronic page turner. However, if an action required is somewhat superficial, the student may be distracted by it and become annoyed. Students prefer not to have superficial interaction.
Group the content into small segments and build in questions (with feedback), periodic reviews, and summaries for each segment.	Grouping content into smaller units and providing opportunities for interaction (e.g., questions) within each information segment allows students to interact with the program more frequently.
Ask as many questions as possible without interrupting the continuity of the instructional flow.	<p>Questions:</p> <ul style="list-style-type: none"> <li>• Produce immediate feedback to students regarding their own performance.</li> <li>• Provide information for the system to evaluate student performance and take actions.</li> <li>• Sustain student attention by keeping them mentally active in the learning process.</li> </ul>
Ask a question after, but not immediately following, the related content.	A gap between a post-question and its related content forces students to mentally search for and review necessary information, rather than repeating what they were just taught. This searching and reviewing enhances retention.
Sometimes a straightforward presentation of new content can be boring. Ask students a question related to the content that has not been taught but the answer can be figured out using previously learned knowledge.	This adds variety, challenges students, and maintains their interest.
Ask questions at the application rather than the memory level.	Application questions enhance attention and comprehension and facilitate transfer of learning.
Use rhetorical questions during instruction to get students to think about the content or to stimulate their curiosity. Also use them as a natural transition between frames.	A rhetorical question is a question that does not require students to overtly provide an answer. It invites students to mentally interact with the content. Used as a transition aid, it can direct students' attention to what is coming up next.
Consider designs where the student is not presented with information in a linear format, but rather discovers information through active exploration in the program.	This adds variety, challenges students, and maintains their interest.

6.1.1.3.5 Guidelines for student control. In many instances students can make appropriate decisions about the most effective way to proceed through a training program. Research suggests that students frequently do not choose the most effective route, therefore, careful consideration of student control issues is important in the design of ICW.



## MIL-HDBK-29612-3

6.1.1.3.5.1 **Student control.** Student control refers to the degree to which students are allowed to take charge of the aspects of the instruction and their learning environment: what to learn and how to learn it. Table 31 presents some guidelines for designing student control of content, sequencing, and pace of ICW training programs.

**TABLE 31. Guidelines for designing student control of ICW.**

<b>GUIDELINE DESCRIPTION</b>	<b>RATIONALE</b>
<b>Provide student control over pace when:</b>	
Students believe that spending appropriate time on a topic will increase their success.	Students are often more satisfied with a program when they can choose the pace because they can spend appropriate time on the topics that relate to their personal needs and goals.
You believe that students will benefit from additional time, (that is, their performance will improve).	Additional time may allow students to integrate new information with previous knowledge.
<b>Provide student control of sequence when:</b>	
Lengthy instructional programs are introduced with no specific presentation order.	Control over sequence will help maintain student motivation and interest.
Students are familiar with a topic and are able to make appropriate sequence choices.	Students can choose information that will be relevant to them.
The type of learning includes cognitive strategies or higher-order problem solving.	Sequence control will allow students to make selections that may facilitate flexible and novel thinking.
Determine the amount of student control based on your resource availability as well as these guidelines	The more control allowed the student over content, pacing, and sequence, the more development work and therefore the more resources will be required.
Do not provide sequence control to students in situations where the materials have a specific prerequisite order.	Learning could be inhibited if the sequence is improperly chosen.
<b>Provide full student control of content if:</b>	
Students have significant previous knowledge of the content.	Presentation of known materials could be irrelevant and uninteresting to students.
Students have higher ability (that is, they are "sophisticated learners").	"Sophisticated learners" may be better able to make content choices based on their needs.
There is a high probability that students will succeed in learning the content regardless of the chosen content.	Students will perceive through feedback that success is under their personal control and is in fact relatively independent of the chosen content.
Cognitive strategies and higher-order problem-solving (rather than facts) are being taught.	This guideline supports individual differences in learning style. Different students may see the relevance of different content and will be able to use this information effectively in novel ways during the learning of cognitive strategies and higher-order problem solving.

## MIL-HDBK-29612-3

TABLE 31. Guidelines for designing student control of ICW - Continued.

GUIDELINE DESCRIPTION	RATIONALE
The skills are not critical, the training is optional, and student motivation is high.	This guideline will help to enhance learning for highly motivated students.
Do <b>not</b> provide full student control of content when all topics in the instructional presentation are required for successful completion of the program or when there is a hierarchical order to the materials.	The student may skip over relevant information.

6.1.1.3.5.2 Influencing factors for student control. The following factors may influence decisions regarding the amount of student control designed into the ICW:

- a. Knowledge of the target audience.
- b. Learning skills of the target audience.
- c. Motivation of the target audience.
- d. Type of content.
- e. Criticality of training.
- f. Available resources.

6.1.1.3.6 Guidelines for feedback and remediation design. Another important aspect of good ICW design is the use of feedback to the student.

6.1.1.3.6.1 Feedback. Feedback refers to the process of informing the student about the accuracy of their response. Feedback can be used to address any possible student misconceptions or lack of prerequisite knowledge. Feedback can be used to help students learn, enhance retention and measure how much they have learned. Table 32 presents guidelines for designing feedback for ICW.

6.1.1.3.6.2 Content of feedback. Feedback may consist of:

- a. Knowledge of results (correct or incorrect).
- b. Explanation why the selected response is correct or incorrect.
- c. Branching to remedial session (optional or forced).

TABLE 32. Guidelines for designing feedback for ICW.

GUIDELINE DESCRIPTION	RATIONALE
Keep feedback on the same screen with the test item and student response.	Reduce memory load.
Provide feedback immediately following a student response.	Information about test results is an important element in the learning process. Delayed feedback can confuse students.
Provide feedback to verify the correctness and explain why.	It may not be clear to students why their responses are correct or incorrect. Therefore, in addition to knowledge of results, feedback should provide specific information about why a response is correct or incorrect.

## MIL-HDBK-29612-3

TABLE 32. Guidelines for designing feedback for ICW - Continued.

GUIDELINE DESCRIPTION	RATIONALE
For incorrect responses, give the student a hint and ask the student to try again.	Without the hint, students may fail again and feel frustrated. The hint helps students recall relevant information to answer the test item.
Tailor the feedback to each student's response.	Feedback should address the misconception a student may have by selecting a particular incorrect response.
Provide positive feedback. However, do not provide the type of feedback that may encourage incorrect responses.	Feedback, when properly used, can provide students with the motivation to learn. Cynical or negative feedback may discourage a student.
Add instructional feedback to simulation responses to explain why the simulated world reacted in a certain way or to provide a hint.	Instructional feedback guides the student through the simulation. In simulation, feedback is embedded in how the simulated world responds to a particular student action. Later it can be phased out to facilitate transfer.
If possible, allow students to print out a copy of their test results.	Often students like to maintain a hard copy record of their performance.

6.1.1.4 Determine record keeping strategies. An important aspect of ICW development is the design of record keeping functions. Record keeping functional requirements for a specific program should be developed in coordination with the user and ICW team.

6.1.1.4.1 Record keeping functions. Record keeping functions may include, but are not limited to, any or all of the following:

- a. Registration of the student in an ICW course.
- b. Point-of-entry for the student to the course, often based on a pre-test performance or previously "bookmarked" location. Students should be able to leave a lesson and return to the same point at a later time.
- c. Collection of data regarding the student's performance on tests and practice exercises.
- d. Determination of student mastery of learning objectives.
- e. Reporting of information.
- f. Disenrollment of student from the course.

6.1.1.4.2 Record keeping capabilities. Prior to designing the record keeping capability for an ICW course, review the authoring software selected to determine the kind of data collection and analysis that is possible.

6.1.1.5 Design of ICW tests. Electronic tests are developed to measure a student's knowledge, skill, or attitude on a particular subject.

6.1.1.5.1 Types of ICW tests. Many types of tests can be administered electronically. The types of tests usually developed in ICW courses are pre-tests and criterion tests. A few tests that lend themselves well to ICW are:

- a. Pre-test. The pre-test is used to measure the student's knowledge and skills for diagnostic purposes.
- b. Criterion test. The criterion test is used to measure the student's attainment of the learning objectives. Analysis of test results over a period of time can be used as a measure of the effectiveness of the ICW.

## MIL-HDBK-29612-3

- c. Simulated performance tests. The test simulates the on-the-job environment, and requires the student to interactively complete the simulation. The student accomplishes this through the application and synthesis of knowledge and skill learning objectives presented in the instructional materials. The test requires the student to perform the simulated job task to established performance standards.
- d. Simulated part-task performance tests. Simulated part-task performance tests measure critical sub-sets of job task performance. Simulated part-task performance tests should meet the same construction criteria as simulated performance tests.
- e. Heuristic tests. Heuristic or discovery tests will present problem-solving simulations that emulate the on-the-job environment. These tests present the student with stimulus information that is inadequate, incomplete, ambiguous, or irrelevant to the simulated environment. The student will be required to synthesize knowledge and apply training received in order to solve the job performance simulation.
- f. Simple gaming tests. Simple gaming tests will present the student with fill-in-the-blank, multiple choice, matching, completion, and true/false test items formatted and presented in a gaming style.

6.1.1.5.2 Tips for ICW test design. Table 33 provides guidelines for designing ICW tests.

**TABLE 33. Guidelines for designing ICW tests.**

<b>GUIDELINE DESCRIPTION</b>	<b>RATIONALE</b>
Use a student's pre-test score to branch the student to "need to know" information.	This reduces student boredom by not forcing them to learn things they already know.
Use the student's pre-test score to gauge deficiencies in entry-level or prerequisite skills and knowledge.	The pre-test will stimulate recall of relevant prior knowledge (one of the "events of instruction").
For pre-tests, explain that the students are not expected to know all the answers.	This will put students "at ease" with the new instruction.
Introduce the test by telling students how many test items they will see and how long it should take them to complete the test.	This will help students gauge how extensive the test is.
Let students "back out" of taking a pre-test if they know they do not know the content.	Forcing students to take a test when they know they do not know the content can introduce unnecessary stress into a learning situation.
Provide good instructions for taking the test, including how to change answers.	This reduces the possibility of students making errors when they actually have mastered the learning objective.
Provide a method for students to review their completed test.	If students responded with a wrong answer and subsequently realize it, they should be able to correct the answer, just as they can in a paper-and-pencil testing situation.

## MIL-HDBK-29612-3

TABLE 33. Guidelines for designing ICW tests – Continued.

GUIDELINE DESCRIPTION	RATIONALE
Provide feedback to students' answers in the same order that they answered the test items.	This reduces confusion.
Design the program so that the computer "works through" a problem with students instead of just giving the correct answer.	This reduces learning time because a student may have a partially correct answer. The computer should identify the point where the student is in error and invite the student to continue from there.
If test items are drawn from a "pool" of test items, remove correctly answered test items from the pool.	The learning criterion has been achieved and students should not be required to answer these test items again.

6.1.1.6 Determine instructional treatments. Instructional treatments are the general instructional concepts for lessons in an ICW course. In determining instructional treatments, ensure that:

- The ICW design facilitates learning and processing of information.
- The ICW design accommodates the types of information or content of the program.
- Interactivity is addressed.
- Degree of student control is addressed.
- Feedback is appropriate for enhancing learning and transfer.

6.1.1.6.1 ICW events of instruction. Particular activities or events can be designed into ICW programs to help ensure that learning occurs. Table 34 lists the ICW events of instruction and describes the purpose of each. Examples are included for each event.

TABLE 34. ICW events of instruction.

EVENT	PURPOSE	EXAMPLES
Gain attention	<ul style="list-style-type: none"> <li>Focus student attention on key information.</li> <li>Motivate.</li> </ul>	<ul style="list-style-type: none"> <li>Use humor as appropriate.</li> <li>Show consequences of certain actions.</li> </ul>
Inform student of learning objective(s)	<ul style="list-style-type: none"> <li>Tell students what they are about to learn.</li> </ul>	<ul style="list-style-type: none"> <li>Tell.</li> <li>Demonstrate.</li> <li>Ask rhetorical questions.</li> </ul>
Stimulate recall of relevant prior knowledge	<ul style="list-style-type: none"> <li>Help students retrieve background and prerequisite information.</li> </ul>	<ul style="list-style-type: none"> <li>Ask rhetorical questions.</li> <li>Present a review.</li> <li>Remind students.</li> </ul>
Present information	<ul style="list-style-type: none"> <li>Teach students the required knowledge/skills.</li> </ul>	<ul style="list-style-type: none"> <li>Use audio, text, video, and graphics.</li> <li>Compare similarities and differences.</li> <li>Point out critical and distinctive features.</li> </ul>
Provide guidance	<ul style="list-style-type: none"> <li>Enhance comprehension and retention.</li> </ul>	<ul style="list-style-type: none"> <li>Ask questions appropriately in areas the student is likely to experience trouble.</li> <li>Give students hints or options for help.</li> <li>Use mnemonics, job aids, checklists.</li> </ul>
Assess performance	<ul style="list-style-type: none"> <li>Determine if students have mastered the LOs.</li> </ul>	<ul style="list-style-type: none"> <li>Test on knowledge/understanding.</li> <li>Test on task performance.</li> </ul>

## MIL-HDBK-29612-3

6.1.1.7 Develop flowcharts and storyboards. This section presents guidelines for flowcharts and storyboard development.

6.1.1.7.1 ICW flowcharts. Prior to the development of the ICW storyboard it is helpful to have a flowchart of the content for the program. Storyboards are then created for each item included in the flowchart. The flowchart also serves to provide order for the instructional sequence. ICW flowcharts are developed to show the layout of the entire ICW course. To save time and effort the use of a flowcharting software tool is recommended. This tool allows a user to build a flowchart very quickly because it creates an image file and flowcharting symbols instead of using the more typical line-draw function.

6.1.1.7.1.1 ICW flowchart guidelines. An ICW flowchart outlines the flow through the course. Very little detail is presented other than module and lesson names. Listed below are some guidelines for developing an ICW flowchart:

- a. Keep it simple. It should be understandable to a person without ICW experience.
- b. Do not show individual screens on the flowchart.
- c. Represent entire segments of the lesson by a single entry.
- d. Show just enough detail on lesson branching to depict the overall flow.
- e. Do not indicate specific menus, feedback, remediation, or help screens.
- f. Show the suggested sequence of the modules and lessons.

6.1.1.7.1.2 Example of ICW flowchart. Figure 4 provides an example of an ICW flowchart.

MIL-HDBK-29612-3

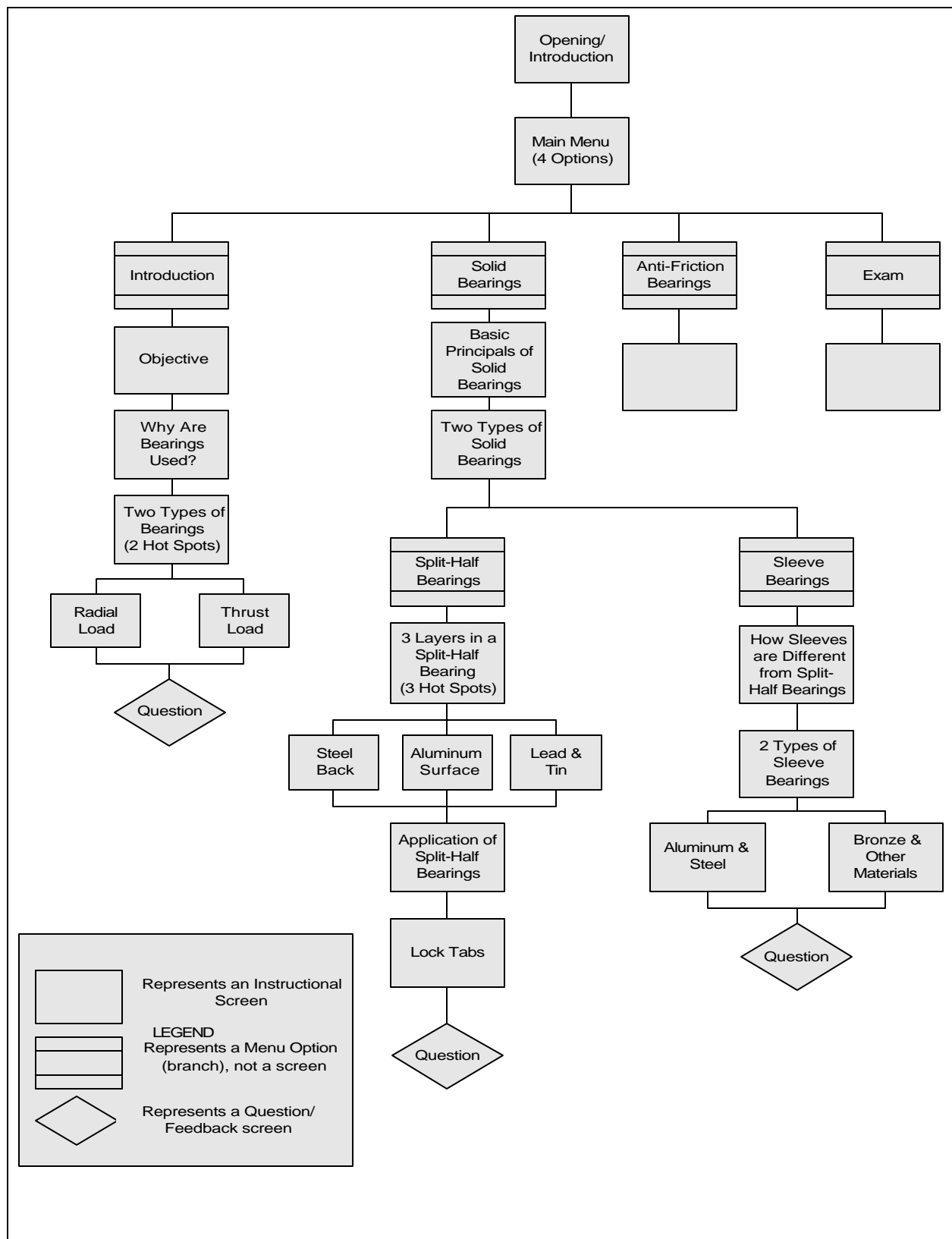


FIGURE 4. ICW flowchart example.

## MIL-HDBK-29612-3

6.1.1.7.2 General guidelines for programming. The programming or authoring of an ICW program typically occurs in the development phase. However, consideration needs to be given to a number of programming issues during storyboard design.

6.1.1.7.2.1 Programming standards. It is wise to establish programming standards before beginning to develop the storyboard. Although a certain degree of flexibility is necessary, and changes may occur along the way, standards establish consistency throughout the entire ICW program. Table 35 shows the programming standards that should be considered.

TABLE 35. **Programming standards considerations.**

<b>CONSIDER STANDARDS FOR:</b>	<b>PROGRAMMING STANDARDS CONSIDERATIONS</b>
Screen Type	<ul style="list-style-type: none"> <li>• Course/lesson/subject title screen.</li> <li>• Introduction/overview screen.</li> <li>• Instructional screen.</li> <li>• Inserted test item and feedback screen.</li> <li>• Review screen.</li> <li>• Summary screen.</li> <li>• Practice/exercise screen.</li> <li>• Test screen.</li> <li>• Help screen.</li> </ul>
Screen Layout	<ul style="list-style-type: none"> <li>• Amount of text.</li> <li>• Text placement.</li> <li>• Headings.</li> <li>• Margins.</li> <li>• Text font and size.</li> <li>• Captions.</li> <li>• Color (e.g., text, background, emphasis, borders).</li> <li>• Attention-getting cues.</li> <li>• Paragraph indentation.</li> <li>• Buttons (what -- navigation/help/content; format -- icon/text).</li> <li>• Menus (e.g., structure, labels).</li> <li>• Windows.</li> </ul>
Test items and Feedback	<ul style="list-style-type: none"> <li>• Presentation of test items (e.g., text, audio, graphical, or combination).</li> <li>• Type of student responses required (e.g., pointing, selecting, or text entry).</li> <li>• Number of tries allowed.</li> <li>• Hint.</li> <li>• Type of feedback for each try (e.g., knowledge of result, explanation, remediation).</li> <li>• Presentation of feedback (e.g., text, audio, graphical, or combination).</li> <li>• Type of test item (e.g., multiple choice, short answer, matching, etc.)</li> </ul>
Presentation Sequence in each Segment	<ul style="list-style-type: none"> <li>• Title screen.</li> <li>• Opening (e.g., motivational video segment).</li> <li>• List of learning objectives.</li> <li>• Main body of instruction with inserted test item and periodic reviews.</li> <li>• Summary.</li> <li>• Exercise, practice, and test.</li> </ul>



MIL-HDBK-29612-3

TABLE 35. **Programming standards considerations - Continued.**

CONSIDER STANDARDS FOR:	PROGRAMMING STANDARDS CONSIDERATIONS
Miscellaneous	<ul style="list-style-type: none"> <li>• Naming conventions for video segments and files.</li> <li>• Transition.</li> <li>• Sign-on procedures.</li> <li>• Cursor placement on each new screen.</li> <li>• Voice (e.g., referring to students as "YOU" and the program as "I" or a third person).</li> <li>• Movement instruction (given via audio channel or buttons on the screen).</li> </ul>

6.1.1.7.2.2 Guidelines for programming. Table 36 shows a few specific guidelines for programming considerations during the storyboard development event.

TABLE 36. **Guidelines for programming elements of a storyboard.**

GUIDELINES FOR PROGRAMMING ELEMENTS OF STORYBOARD		
#	GUIDELINE DESCRIPTION	RATIONALE
1	Prepare a flowchart for the overall flow of the program.	<ul style="list-style-type: none"> <li>• It provides a top-level organizer to guide the development of storyboards.</li> <li>• It conveys the complex instructional flow in an interactive program to the programmer during the development phase.</li> </ul>
2	Define the abbreviations to be used in the storyboard and communicate them to all production team members (e.g., GR for graphics, MV for motion video).	Defining abbreviations ensures that all production team members use and have the basis for understanding the abbreviations.
3	Follow the program standards, unless a convincing argument can be offered as to why the standards are not applicable to the design.	<ul style="list-style-type: none"> <li>• Standards save time; they eliminate the need for reinvention and modification.</li> <li>• Standards promote clarity and consistency.</li> <li>• Standards should be periodically reviewed, evaluated, and changed if necessary.</li> </ul>

6.1.1.7.3 Storyboards. Storyboards provide explicit information on how the ICW lessons will look and function. Consideration is given to general principles and visual, audio, and programming elements. Storyboards are used to develop the screen presentations for ICW.

6.1.1.7.3.1 Storyboarding techniques. Storyboards can be developed in print format or automatically using a special purpose storyboarding tool.

6.1.1.7.3.2 General ICW storyboard design principles. There are a number of general ICW design principles that should be considered when developing the ICW storyboards. Examples are:

- a. User friendliness.
- b. Menu-driven design.
- c. Browsing alternatives.
- d. Help functions.

## MIL-HDBK-29612-3

- e. Record tracking.
- f. Navigation.
- g. Impact of type of input devices.
- h. User messages.
- i. Cues.
- j. Capabilities of selected authoring software.

6.1.1.7.3.3 Guidelines for implementing the general storyboarding principles. Table 37 shows the basic steps involved in storyboard development. Table 38 shows specific guidelines for applying the general storyboard principles and a rationale for implementing each principle.

**TABLE 37. Steps involved in storyboard development.**

<b>STEP</b>	<b>ACTION</b>
1	Define the scope of the program and collect content. <ul style="list-style-type: none"> <li>• Know the audience.</li> <li>• List learning objectives.</li> <li>• Identify types of content.</li> <li>• Obtain content.</li> <li>• Verify content.</li> <li>• Identify context of the content (before and after).</li> </ul>
2	Agree on program standards (if they do not already exist).
3	Determine program structure and requirements: <ul style="list-style-type: none"> <li>• Menu structure.</li> <li>• List of lessons, subjects, and topics included.</li> <li>• Navigation options.</li> <li>• Available help functions.</li> <li>• Program flowchart.</li> </ul>
4	Determine a high-level instructional treatment for the program.
5	Group information into smaller segments.
6	Determine a detailed instructional treatment for each segment (e.g., text, video, graphics, animation).
7	Document the designs in a storyboard following the guidelines provided in this reference. <ul style="list-style-type: none"> <li>• Design instruction for each segment.</li> <li>• Design inserted questions, reviews, and summaries for each segment.</li> <li>• Design practice exercises and/or test items (criterion referenced) for larger unit of instruction.</li> </ul>
8	Constantly communicate with the production crew to fine-tune the design and to make sure it is can be implemented.
9	Involve subject matter experts at major milestones in validating the program: <ul style="list-style-type: none"> <li>• Completion of storyboards for one topic.</li> <li>• Completion of video segment, graphics, etc.</li> <li>• Completion of a prototype lesson.</li> </ul>

## MIL-HDBK-29612-3

TABLE 38. Guidelines for storyboarding.

#	GUIDELINE DESCRIPTION	RATIONALE
1	Develop a user-friendly system. A user-friendly system should: <ul style="list-style-type: none"> <li>• Be self-explanatory.</li> <li>• Make the system functions evident to students.</li> <li>• Give students a sense of control.</li> <li>• Acknowledge student input (audio or visual).</li> <li>• Be interruptible at any point (e.g., pause and continue, exit program).</li> <li>• Permit easy reversal of actions.</li> </ul>	A user-friendly system prevents students from becoming frustrated with the system and allows them to concentrate on learning the content of the program.
2	Provide a menu-driven system using the following guidelines: <ul style="list-style-type: none"> <li>• Menus should be distinguishable from the rest of the display.</li> <li>• Menus should be consistent in design and display.</li> <li>• Use meaningful labels for menu items.</li> </ul>	Menus display available functions so students do not have to know or remember what is available at any point. They simply select from the range of possibilities offered to them.
3	Provide a browsing alternative.	First-time students can browse through the entire program to get a feel of the content. Students who have gone through the program can use the feature for a quick review or as a reference on the job.
4	Allow the student to request and receive information so that the action to request help does not affect the student's course of action.	Help functions should provide the student with supplemental information, explanations, or assistance without affecting the student's ongoing performance.
5	Clearly identify screen objects.	An object should only be displayed symbolically when its meaning is absolutely clear. If symbols are used, they should convey enough information as to their purpose so that students will not be confused by their function.
6	Provide instructions that describe screen functions.	Students need appropriate and clear navigational tools and instructions for using the tools to investigate even the most effectively designed programs.
7	Provide student record tracking.	This feature allows student performance records (e.g., scores on tests, time spent on a particular task, etc.) in a training program to be collected and analyzed.
8	Provide an optional navigation lesson for new students including: <ul style="list-style-type: none"> <li>• Overview of the content.</li> <li>• Special features of the program.</li> <li>• Menu structure.</li> <li>• How to use a mouse.</li> <li>• How to get around in the program.</li> </ul>	Students can concentrate on learning the content rather than the navigation mechanism.

MIL-HDBK-29612-3

TABLE 38. Guidelines for storyboarding - Continued.

#	GUIDELINE DESCRIPTION	RATIONALE
9	A mouse is an excellent alternative input device. If a mouse is used, make sure students learn how to use it.	A keyboard is good for text input. A mouse is convenient for: <ul style="list-style-type: none"> <li>• Selecting an object for manipulation.</li> <li>• Positioning an object on a display.</li> <li>• Making a choice from a menu.</li> </ul>
10	When a mouse is used, make the acceptance area larger than the button for faster and easier selection, especially when the button is small. Do not overlap the acceptance area of different targets.	<ul style="list-style-type: none"> <li>• Students may click a little off the target and nothing will happen.</li> <li>• Overlapping acceptance areas may cause incorrect actions to occur.</li> </ul>
11	Provide intermediate feedback when the wait to get a response from the computer is longer than will be comfortable for the student.	Students should never be left wondering if they are supposed to do something or wait for something to happen on the screen.
12	Provide error messages that are informative and low-key. Error messages should: <ul style="list-style-type: none"> <li>• Be specific about the nature and the cause of an error.</li> <li>• Be given immediately after an error occurs.</li> <li>• Inform students of the correct course of action to take.</li> <li>• Be non-threatening.</li> </ul>	When an error occurs, students should never be left wondering what happened and should be informed as to how they should respond.
13	Provide cues to students at the end of an instructional unit. However, cues may not be appropriate when the students are in a browsing mode or when they have total control over the instructional sequence.	These cues provide a sense of closure and fulfillment, and keep students oriented.
14	Know the capabilities and limitations of the authoring language. Do not design some features that cannot be implemented. Always talk to the programmers.	Do not waste time designing IMI that cannot be developed due to limitations of the authoring language.

6.1.1.7.3.4 Guidelines for visual elements. Visual information in an ICW course serves to enhance the effectiveness of the training program. Visual elements include video, text, and imagery (e.g., graphics, animation). Table 39 presents general guidelines to consider for visual elements of ICW. The rationale for the guideline is also described.

MIL-HDBK-29612-3

TABLE 39. Guidelines for storyboarding visual elements

GUIDELINE DESCRIPTION	RATIONALE
Do not crowd a screen with too much information at any one point.	Cluttered screens reduce learning efficiency and effectiveness (i.e., more time to learn and more errors).
<p>When presenting a large amount of relevant information, display small groups of information one at a time through:</p> <ul style="list-style-type: none"> <li>• Screen build-up.</li> <li>• Window overlay.</li> <li>• Icon buttons.</li> </ul>	<ul style="list-style-type: none"> <li>• To reduce memory load.</li> <li>• To facilitate recall and comprehension.</li> <li>• To avoid overwhelming or intimidating students with a large amount of information.</li> </ul>
Use windows to group or separate certain information from the rest of the display.	<ul style="list-style-type: none"> <li>• To draw students' attention to a particular set of data.</li> <li>• To reduce the density of display on the screen by superimposing one display on top of another.</li> <li>• To establish student expectancy that certain data will always appear in a certain format and location.</li> </ul>
Icon buttons work best for concrete concepts that can be represented pictorially in miniature.	Icon buttons represent information that is available in a compact, easy-to-understand, pictorial format; and upon request of a student, discloses that information.
Consider presenting information graphically and spatially (e.g., in a diagram or a flowchart).	<ul style="list-style-type: none"> <li>• Relationships among content or the overall program structure can be more easily visualized and remembered.</li> <li>• A student's path through the program can be easily displayed and remembered.</li> </ul>

## MIL-HDBK-29612-3

TABLE 39. **Guidelines for storyboarding visual elements - Continued.**

GUIDELINE DESCRIPTION	RATIONALE
<p>Techniques to keep students oriented:</p> <ul style="list-style-type: none"> <li>• Place certain information in constant locations.</li> <li>• Provide consistent layout for same types of screens.</li> <li>• Maintain a constant perspective in a series of visuals. If a change of perspective is necessary, cue students to the change.</li> <li>• Use letter sizes, colors and shapes as cues.</li> <li>• Provide signposting information about a student's current and past locations, what lies ahead, and how to get there, all available for reference without moving from the current location.</li> <li>• Provide a bird's-eye view or long shot before zooming into details.</li> </ul>	<p>Knowing where they are, how they got there, what they can do, where they can go and how they can get there gives students a sense of control. Making this information available allows students to concentrate on the program content rather than the navigation mechanism.</p> <p>Establishes a frame of reference.</p>
<p>To position information on a screen:</p> <ul style="list-style-type: none"> <li>• Present key information in prominent areas (e.g., away from the border).</li> <li>• Present information that changes from display to display (the body of the instruction) in the center of the screen.</li> <li>• Present recurrent information (e.g., menu bars) in constant locations.</li> <li>• Present navigation buttons near the borders of the screen.</li> </ul> <p>To differentiate key information and attract/direct attention, these cueing techniques are available:</p> <ul style="list-style-type: none"> <li>• Arrows, labels, narration.</li> <li>• Display density, white space.</li> <li>• Separation of information into distinct objects.</li> <li>• Windows.</li> <li>• Color, shape.</li> <li>• Highlighting, bordering, underlining.</li> <li>• Mixed type sizes and fonts.</li> <li>• Blinking.</li> </ul>	<p>Position information on a screen to establish expectancy and reduce memory load.</p>

MIL-HDBK-29612-3

TABLE 39. **Guidelines for storyboarding visual elements - Continued.**

GUIDELINE DESCRIPTION	RATIONALE
<p>Guidelines for using the cueing techniques:</p> <ul style="list-style-type: none"> <li>• Reserve blinking for critical situations requiring immediate student attention or action.</li> <li>• Borders should be distinct from the object enclosed.</li> <li>• Highlighting can be achieved by either brightening the area of interest or dimming the background.</li> <li>• Limit highlighting to 10% of the display for effectiveness.</li> <li>• Avoid using too many cues at one time.</li> </ul> <p>NOTE: Over-saturation reduces the effectiveness of these techniques.</p>	<p>Helps the student focus on critical elements of the instructional content.</p>
<p>Guidelines for using colors:</p> <ul style="list-style-type: none"> <li>• Too many colors on a display reduce effectiveness and aesthetic quality.</li> <li>• Use yellow, green, or white for text. Blue is an excellent background color. But do not use blue for text, edges, narrow lines, or small objects.</li> <li>• Ensure enough contrast between the text color and background color.</li> <li>• Avoid distinctions based on the color cue only. When using colors, always use a second cue (e.g., label, shape, texture) for color-blind students.</li> </ul>	<p>Proper use of colors helps to focus the student's attention to relevant instructional content.</p>

6.1.1.7.3.4.1 Guidelines for video. Video is often a major element of ICW. A high level of detail is necessary in the storyboard to ensure that the video producer has sufficient information to get an accurate video shot. Table 40 presents video guidelines and the rationale for each guideline.

MIL-HDBK-29612-3

TABLE 40. Guidelines for storyboarding video elements.

GUIDELINE DESCRIPTION	RATIONALE
<p>Tips for preparing video storyboards:</p> <ul style="list-style-type: none"> <li>• Present all information in three-shot sequences (long, medium, and close-up) to establish visual orientation.</li> <li>• Close-up shots grab attention and imply that something is important; long shots establish frames of reference.</li> <li>• A zoom-in focuses attention on a particular object while maintaining visual orientation, providing a similar effect to a three-shot sequence.</li> <li>• A low camera angle looking up at a person implies that the person is strong, powerful, and authoritative.</li> <li>• A high camera angle looking down on a person makes the person appear weak and inferior.</li> <li>• Try to avoid static shots when shooting motion video.</li> <li>• When showing something new, the subject must be focused long enough for the audience to register what is being shown. Once the audience has seen the subject in the shot, do not focus on it as long the next time it is shown.</li> <li>• Keep the main subject well lit and watch for possible background distractions.</li> </ul>	<p>Professional conventions for video production.</p> <p>The eye focuses better on light instead of dark areas and movement instead of static images.</p>
<p>Consider the following motion video formats:</p> <ul style="list-style-type: none"> <li>• Facility/event walk-through (with an off-screen narrator).</li> <li>• Lecture (talking head).</li> <li>• Demonstration (show and tell).</li> <li>• Interview.</li> <li>• Talk show.</li> <li>• Panel discussion.</li> <li>• Dramatization.</li> <li>• Simulation.</li> <li>• Hybrid format.</li> </ul>	<p>Use appropriate format for the content presented and to maintain interest.</p>
<p>Two types of simulation:</p> <ul style="list-style-type: none"> <li>• “First-person” simulation – the program creates as closely as possible an actual situation (e.g., operating a piece of equipment or trouble-shooting).</li> <li>• “Third-person” (directed) simulation – the student vicariously experiences some situation by directing a “person” in the program to do whatever the student wants to do.</li> <li>• Use audio and video to reinforce each other. Never present two unrelated or clashing pieces of information in the two channels.</li> <li>• Design a visual message appropriate to the content. Make sure that each visual ties in directly to the accompanying audio.</li> </ul>	<p>The “third-person” simulation may be more appropriate when you want the students to explore the consequences of both right and wrong behaviors in a high-risk situation.</p> <p>Presenting unrelated or clashing information or a visual that is inappropriate can confuse the student.</p>



MIL-HDBK-29612-3

TABLE 40. Guidelines for storyboarding video elements - Continued.

GUIDELINE DESCRIPTION	RATIONALE
Quickly present a series of visuals prior to or at the end of instruction.	<ul style="list-style-type: none"> <li>• Quick visual inserts presented before instruction stimulate recall of prerequisites, serve as an advance organizer, direct attention to key information, and heighten interest.</li> <li>• Quick visual inserts presented after instruction remind the audience of the key information (what is repeated is more important) and enhance retention (what is repeated is remembered better).</li> </ul>
Provide a quick showing of future events or consequences of unacceptable performance (e.g., disaster caused by human errors) prior to instruction.	<ul style="list-style-type: none"> <li>• To impress the audience with the serious outcomes associated with unacceptable performance.</li> <li>• To motivate the audience to adopt acceptable behaviors or practice.</li> </ul>
Show the same program content repeatedly in either an identical format or a different perspective to draw attention heighten interest, and enhance retention.	<ul style="list-style-type: none"> <li>• What is repeated is remembered better.</li> <li>• The mere fact that something is repeated implies that it is important.</li> </ul>
<p>Criteria to determine the use of motion video versus still frame:</p> <ul style="list-style-type: none"> <li>• Use motion video if the content requires motion to clearly depict the point.</li> <li>• Motion video adds motivational value to training.</li> <li>• Use still frames if production resources are limited without compromising instructional effectiveness.</li> <li>• Be aware of the storage limitation of the hardware: motion video takes up more storage space than still frames.</li> </ul>	Motion video can be used to represent reality and help the student achieve a high degree of transfer from training to on-the-job performance. For this reason, motion video is often used to support affective domain learning objectives and simulations.

6.1.1.7.3.4.2 Video storyboard guidelines. A video storyboard usually includes sketches of the shots and camera lenses, angles, and movements. Some sample standard shot abbreviations are:

CU = Close-Up  
 LS = Long Shot  
 MS = Medium Shot  
 OS = Over-the-shoulder Shot

## MIL-HDBK-29612-3

6.1.1.7.3.5 **Guidelines for text.** Text may be the primary method for presenting content to the student or it may serve to highlight certain information. Table 41 presents text guidelines and the rationale for each guideline.

**TABLE 41. Guidelines for storyboarding text elements.**

#	GUIDELINE DESCRIPTION	RATIONALE
1	Limit amount of text on screen.	It is more difficult and takes longer to read text on a screen than in print. People read text on a computer screen at a rate 28% slower than reading from a book.
2	<ul style="list-style-type: none"> <li>• Regular text should be left-justified only. Center headings and titles.</li> <li>• Use paging (not scrolling) when presenting large amounts of text.</li> <li>• Upper case should be reserved for emphasis and titles only.</li> <li>• Do not use hyphenations to break words except for compound words.</li> </ul>	Research data indicates that these guidelines make it easier for students to read and comprehend text.
3	<ul style="list-style-type: none"> <li>• Provide generous white space to separate blocks of information.</li> <li>• Use headings to summarize contents as navigation aids.</li> <li>• Convert sentences containing serial items to lists.</li> <li>• Organize complex information into tables to help students integrate program content.</li> </ul>	Makes information more legible.
4	<p>Use attention-getting techniques:</p> <ul style="list-style-type: none"> <li>• Limit highlighting or boldface to 10% of the display.</li> <li>• Underlining is best for titles or headings.</li> <li>• Use reverse video or blinking with extreme discretion.</li> <li>• Use mixed type sizes or fonts to differentiate screen components.</li> <li>• Use no more than three attention-getting techniques on a single screen.</li> </ul> <p>NOTE: Over-saturation reduces the effectiveness of these techniques.</p>	Helps to focus the student's attention on key information.

MIL-HDBK-29612-3

TABLE 41. **Guidelines for storyboarding text elements - Continued.**

#	GUIDELINE DESCRIPTION	RATIONALE
5	Verify the appropriateness of the colors used for text under simulated presentation conditions.	The clarity of colors used for text will vary depending on such factors as lighting of the room where the ICW stations are and proximity of the students to the machine.

6.1.1.7.3.6 Guidelines for graphics and animation. Graphics and animation can be included in an ICW program to enhance learning. Table 42 shows the guidelines for using graphics and animation and the rationale for each guideline.

TABLE 42. **Guidelines for storyboarding graphics and animation elements.**

GUIDELINES FOR GRAPHICS AND ANIMATION ELEMENTS OF STORYBOARDS		
#	GUIDELINE DESCRIPTION	RATIONALE
1	Use graphics or animation when: <ul style="list-style-type: none"> <li>• A realistic presentation (i.e., video) may overwhelm the audience with too much detail.</li> <li>• Conditions or problems to be portrayed occur so infrequently that a video presentation is not possible.</li> </ul>	Graphic or animation presentation can direct audience attention to essential information by highlighting the relevant and omitting the irrelevant.
2	When a graphic is used for the purpose of reducing irrelevant details and highlighting key information, video may be used together with or following the graphic presentation.	Graphics can make a link to the real world and enhance learning transfer.
3	Avoid biases or stereotypes in graphics or animation (e.g., gender, ethnic groups).	Students might find it insulting.
4	Use exaggeration and humor appropriately to heighten student interest and to facilitate recall.	Increases motivation. People often remember exaggerated or humorous information better.

6.1.1.7.3.7 Guidelines for audio. Audio is often a major element of an ICW program. The audio part of a storyboard is used by a narrator during audio production. Table 43 presents audio guidelines and the rationale for each guideline.

MIL-HDBK-29612-3

TABLE 43. **Guidelines for storyboarding audio.**

#	GUIDELINE DESCRIPTION	RATIONALE
1	<p>Guidelines to determine the use of text or audio for primary presentation of the program content:</p> <ul style="list-style-type: none"> <li>• Use text when the message is long, complex, or uses technical or unfamiliar terms.</li> <li>• Use audio when the message is short, simple, requires immediate student response, or when the visual channel is overloaded.</li> <li>• To be most effective, audio and text should complement, not compete with, each other. Audio should not interfere with reading from the text and vice versa.</li> </ul>	Research data indicates that these guidelines make it easier for students to comprehend and process information.
2	Audio should support rather than contradict or interfere with visuals. A long silence may confuse students as to what to do. When the video channel is presenting something crucial, do not let the audio compete for attention.	Research data indicates that these guidelines make it easier for students to comprehend and process information.
3	Stick to the message. Tell the students only what is relevant.	Production of irrelevant information is a waste of money and time.
4	Keep production limits in mind (i.e., budget, time, technical capabilities). Allow time for audio rework, which could happen as the development effort proceeds.	Avoid reaching a point in the development effort where you have run out of funds and are not quite finished with the program.
5	Provide students with headphones.	Students in lab environment will not be distracted by the audio from other student stations.

MIL-HDBK-29612-3

TABLE 43. Guidelines for storyboarding audio - Continued.

#	GUIDELINE DESCRIPTION	RATIONALE
6	<p>Guidelines for scripting narration:</p> <ul style="list-style-type: none"> <li>• Think visually.</li> <li>• Consider students' language ability, subject matter knowledge, and vocabulary.</li> <li>• Use appropriate style and tone.</li> <li>• Write the script for the ear, not the eye.</li> <li>• Keep the language simple, active, and direct.</li> <li>• Use short sentences.</li> <li>• Avoid acronyms, technical jargons, and unfamiliar terms. Define them if used.</li> <li>• Make the transitions from one concept to another clear.</li> <li>• Every piece of narration needs a corresponding visual.</li> <li>• Avoid long pauses in visuals waiting for extended narration to finish.</li> <li>• Select appropriate narrators.</li> <li>• Consider alternating male and female voices to provide variety and to maintain audience attention.</li> <li>• Test the script by reading it out loud to yourself.</li> </ul>	<p>These guidelines will make it easier for the narrator or professional talent to record or read the ICW audio.</p>
7	<p>Keep the script short and simple. If the message is too long, break it into groups separated by instructional activities (e.g., quizzes, reviews, hands-on exercises).</p>	<ul style="list-style-type: none"> <li>• Students may become bored if they receive information passively from the program for an extended period of time.</li> <li>• Short audio segments are easier to program.</li> </ul>

MIL-HDBK-29612-3

TABLE 43. **Guidelines for storyboarding audio - Continued.**

#	GUIDELINE DESCRIPTION	RATIONALE
8	<p>Script format for professional talent/narrators:</p> <ul style="list-style-type: none"> <li>• Always have the script typed.</li> <li>• Number all pages in the upper right-hand corner.</li> <li>• Use all caps.</li> <li>• Specify how acronyms should be read.</li> <li>• Spell out all numbers.</li> <li>• Spell difficult words and names phonetically.</li> <li>• Separate each letter in an abbreviation with a hyphen (e.g., I-C-W).</li> <li>• Describe nonverbal cues in parentheses.</li> <li>• Indicate pauses by the word "PAUSE" in parentheses.</li> <li>• Indicate emphasis in parentheses if inflection is not obvious.</li> <li>• Double or triple space between lines.</li> <li>• The script should not exceed three inches in length and should use a legible type size.</li> </ul>	These guidelines will make it easier for the narrator or professional talent to record or read the ICW audio.
9	<p>Use sound effects as cues:</p> <ul style="list-style-type: none"> <li>• A beep or "oh-oh" to clue students that they have done something incorrectly on the screen (e.g., response formatted incorrectly).</li> <li>• A tune associated with a certain event in the program (e.g., quizzes inserted in the instruction, feedback for incorrect responses).</li> </ul>	Once the link between a sound effect and a specific event is established, the sound effect serves as an efficient navigation aid.

6.1.1.7.3.8 Storyboard checklist. Table 44 provides a checklist for use in evaluating and improving the quality of storyboards.

TABLE 44. **Storyboard checklist.**

<p>Directions: Place a check in the middle column if the corresponding guideline is included in the program. If a guideline does not apply, indicate so with "N/A" for not applicable. Document with comments where appropriate.</p>		
I. OVERALL PRINCIPLES	✓	COMMENTS
1. Program includes the events of instruction or a rationale for omitting an event.		
2. The instructional treatment is appropriate for the content type.		
3. Practice provided is appropriate for the content type.		
4. Learning objectives provide complete coverage of content to be taught.		

MIL-HDBK-29612-3

TABLE 44. Storyboard checklist - Continued.

<b>I. OVERALL PRINCIPLES</b>		✓	<b>COMMENTS</b>
5.	Instruction and test items correlate with learning objectives.		
<b>II. INFORMATION TO BE INCLUDED IN A STORYBOARD</b>		✓	<b>COMMENTS</b>
1.	Identification information is complete.		
2.	Programming notes are complete.		
3.	Audio script is complete.		
4.	Video information is complete.		
5.	Graphic information is complete.		
6.	Text information is complete.		
<b>III. INSTRUCTIONAL DESIGN GUIDELINES</b>		✓	<b>INCREASING INTERACTIVITY COMMENTS</b>
1.	Provides ample opportunities for meaningful interaction.		
2.	Content is grouped into small segments; and test items (with feedback), periodic reviews, and summaries are built in.		
3.	Numerous test items are included, but do not interrupt the continuity of the instructional flow.		
4.	Test items follow the instruction to force students to search for and review necessary information.		
5.	Students are asked questions related to content that has been taught, requiring them to use previously learned knowledge to answer them.		
6.	Questions are at the application rather than the memory level.		
7.	Rhetorical questions are included to get students to think about the content, to stimulate their curiosity, or as a transition between frames.		
8.	Opportunity is provided where the student may discover information through active exploration.		
<b>STUDENT CONTROL</b>		✓	<b>COMMENTS</b>
1.	Students are given the appropriate amount of student control.		
2.	Student control designed can be implemented within available resources.		
3.	Students are always given control over the following elements: pacing, support information, navigation, termination.		

MIL-HDBK-29612-3

TABLE 44. Storyboard checklist - Continued.

FEEDBACK DESIGN		✓	COMMENTS
1.	Feedback is on the same screen with the test item and student response.		
2.	Feedback immediately follows the student response.		
3.	Feedback verifies correctness and explains why.		
4.	For incorrect responses, students are given a hint and the opportunity to try again.		
5.	Feedback addresses student misconceptions or lack of knowledge/skills.		
6.	Feedback is positive and does not encourage incorrect responses.		
7.	In a simulation, instructional feedback is provided in addition to simulation responses.		
IV. STORYBOARD DEVELOPMENT GUIDELINES			
GENERAL PRINCIPLES		✓	COMMENTS
1.	The program is user-friendly.		
2.	The program is menu-driven.		
3.	A browsing alternative is provided.		
4.	Help functions are provided.		
5.	Student record tracking is provided.		
6.	An optional lesson on navigation is provided.		
7.	A lesson on mouse operation is provided when necessary.		
8.	Messages are provided when the wait to get a response is long.		
9.	Error messages are informative and low-key.		
10.	Cues are provided to indicate completion of an instructional segment.		
11.	The authoring language is capable of implementing all features designed.		
12.	The program provides clear instructions on how the student is to respond.		
PROGRAMMING		✓	COMMENTS
1.	Programming acronyms are defined.		
2.	Program standards are followed (e.g., screen type, screen layout, test items and feedback, sequence of presentation within subjects).		
AUDIO		✓	COMMENTS
1.	The script is appropriate for the target audience (language, knowledge, vocabulary).		
2.	The style and tone are appropriate for the target audience.		



## MIL-HDBK-29612-3

TABLE 44. Storyboard checklist - Continued.

AUDIO		✓	COMMENTS
3.	The script is conversational in nature.		
4.	The script language is simple, active, and direct.		
5.	Sentences are short.		
6.	Abbreviations, technical jargon, and unfamiliar terms are avoided or defined if used.		
7.	Transitions between concepts are clear.		
8.	Every piece of narration has a corresponding shot.		
9.	There are no long pauses in a visual waiting for an extended narration to finish.		
10.	The audio supports the visual rather than contradicting or interfering.		
11.	The script is written in a format suitable for professional talents/narrators.		
12.	Sound effects are used as cues.		
13.	The script is short and simple.		
14.	Information is grouped appropriately.		
15.	Only relevant information is included in the script.		
16.	Audio designed can be implemented within production limits.		
VISUAL: GENERAL		✓	COMMENTS
1.	Screens are not cluttered.		
2.	Windows are used to group/separate information on the screen.		
3.	Methods are used to orient students in the program (e.g., placement of information, consistency of screen layout).		
4.	When appropriate, information is presented graphically.		
5.	Small groups of information are presented one at a time through use of windows, icon buttons, and screen buildup.		
6.	Cueing techniques are used to attract/direct student attention (e.g., arrows, labels, color, highlight).		
7.	Attention-directing cues are gradually faded to facilitate learning transfer.		
8.	Color is used appropriately.		
9.	Information is positioned appropriately on the screen (location of key information and menu bar).		

## MIL-HDBK-29612-3

TABLE 44. Storyboard checklist - Continued.

VISUAL: VIDEO		✓	COMMENTS
1.	Sketches of shots, camera lenses, angles, and movements are included.		
2.	The motion video format used is appropriate for the content (e.g., demonstration, simulation, lecture).		
3.	Audio and video reinforce each other.		
4.	The visual message (e.g., graphics, animation, still frame, motion video) is appropriate for the content.		
5.	Shows content repeatedly in either an identical format or different perspective to draw attention, heighten interest, or to enhance retention.		
6.	Program appropriately uses motion video vs. still frame.		
VISUAL: TEXT DISPLAY		✓	COMMENTS
1.	Text is left-justified (no right justification). Headings and titles are centered.		
2.	Paging (not scrolling) is used for large amounts of text.		
3.	Upper case is used only for emphasis and titles.		
4.	Hyphens are not used except for compound words.		
5.	There is plenty of white space separating blocks of information.		
6.	Headings are used as content summaries and navigation aids.		
7.	Lists are used for serial items.		
8.	Tables are used for presenting and integrating complex information.		
9.	Attention-getting techniques are used appropriately (e.g., highlight, bold, underline, color).		
10.	Spelling, grammar, and punctuation are correct.		
VISUAL: GRAPHICS/ANIMATION		✓	COMMENTS
1.	Use of graphics/animation is appropriate for the content.		
2.	When appropriate, video is used following a graphic to enhance learning transfer.		
3.	Biases or stereotypes in graphics and animation are avoided.		
4.	Exaggeration and humor are used appropriately to heighten student interest and to facilitate recall.		

## MIL-HDBK-29612-3

6.1.1.8 ICW prototype lessons. This section presents guidelines for developing ICW prototype tests and lessons. A major part of the instructional media design is a prototype of the tests and lessons to be developed. This can provide for staff reviews while the remainder of the instructional media design is being completed.

6.1.1.8.1 Description of ICW prototype lessons. An ICW prototype may include but is not limited to the following:

- a. A small sample of a lesson, up to a complete lesson.
- b. A segment of a module pre and post-test.
- c. A segment, up to an entire lesson progress test.

6.1.1.8.2 ICW prototype content. The prototype is a sample of the tests and lessons illustrating:

- a. All user screen design and media conventions.
- b. Training/branching and remediation/reinforcement strategies for tests and lessons.
- c. Learner control features.
- d. Typical instructional activities with dramatic treatment, continuity, and motivational approaches.
- e. Computer management and record keeping functions to be used.

6.1.1.8.3 Why have an ICW prototype? Most customers have difficulty visualizing the finished product without seeing a prototype of a small segment of the ICW. The following are some reasons for developing a prototype:

- a. Unproductive arguments may occur between the developer and customer regarding interpretation of statements in the instructional media design documentation. To avoid this situation develop a prototype that shows exactly what the statements mean.
- b. Color and design of the screen may sound good on paper, but when presented on the screen look unappealing to the customer.
- c. Planned dramatic treatments, and motivational and continuity approaches may sound exciting, but may look amateurish or insulting to the customer on the screen.
- d. If any of the above situations occur, the developer would have to modify everything under development to provide the customer with a desirable product.

6.1.1.8.4 ICW prototype guidelines. Ensure that the prototype lesson is the standard for all future course development as follows:

- a. The prototype is not to exceed the team's ability within the allotted time and training constraints.
- b. Review all components of the prototype with the team members. Finalize conventions, standard frames, groups, and templates at this time.
- c. After any requested changes or corrections have been incorporated, provide all team members with a copy of the approved prototype for reference in construction of other lessons/tests.
- d. The prototype needs to have been demonstrated to and approved by higher level management and/or the customer before proceeding.

## MIL-HDBK-29612-3

- e. The prototype should also be used to gain approval of specific narrators and background music.
- f. Encourage comments and discussion at this stage so that any reservations are addressed before lesson development begins.
- g. Establish up front as many testing, gaming, simulation, and decision making templates as possible for use by developers throughout the development cycle. Incorporate as many as are reasonable in the prototype.

6.1.1.8.5 Elements involved in ICW prototype lesson development. Table 45 shows the basic elements involved in developing a lesson/test prototype.

**TABLE 45. Prototype lesson development elements.**

<b>ELEMENT</b>	<b>ACTION</b>
1	Define the scope of the program and collect content as follows: Know the audience. List learning objectives. Identify types of content. Obtain content. Verify content. Identify context of the content (before and after).
2	Set/agree on program standards (if they do not already exist).
3	Determine program structure and requirements. Menu structure. List of lessons, subjects, and topics included. Navigation options. Available help functions. Program flowchart.
4	Determine an instructional and testing strategy for the program.
5	Group information into smaller segments.
6	Determine a detailed instructional strategy for each segment (text, video, graphics, animation).
7	Document the designs in an instructional media design/prototype following the guidelines provided in this reference. Design instruction for each segment. Design inserted test items, reviews, and summaries for each segment. Design practice exercises and/or test items (criterion referenced for larger units of instruction).
8	Constantly communicate with the imaging personnel/ production crew to fine-tune the design and ensure that it can be implemented.
9	Involve subject matter experts at major milestones when developing the program for: Completion of storyboards for one topic. Completion of video segment, graphics, etc. Completion of prototype lesson. Completion of tests. Completion of each lesson and/or module.

6.1.1.9 How to develop ICW. This section addresses how to develop and produce an ICW course as specified in the ICW storyboards. When developing ICW there are concerns to be considered regarding production requirements, as discussed in the following paragraphs:

6.1.1.9.1 Program the lessons. Quality programming is a key element to maintaining the courseware. The guidelines presented here have been designed to improve the supportability of ICW lessons and to decrease the amount of time required to program the lessons. Table 46 lists various programming guidelines, what the guidelines mean, and the rationale for implementing the guidelines.

MIL-HDBK-29612-3

TABLE 46. ICW programming guidelines.

GUIDELINE	RATIONALE
Develop templates for recurring routines.	Many ICW lessons will follow the same structure and will function in a similar manner. Try to reuse as much code as you can to reduce time. Develop template or shell screens and copy them as needed.
Develop object libraries.	Group recurring screen elements (such as graphics that appear in many lessons) into object libraries for easy reuse and modification to save time.
Use built-in CMI functions if possible.	Some ICW authoring systems have built-in CMI functions and routines to track data. Use these features to save time.
Avoid excess use of CMI capabilities.	If your authoring system does not have built-in CMI features and you have to develop your own routines for record keeping and data analysis, you may find that you are using excessive capabilities. Develop CMI to meet the requirements in the storyboard and tailor back the design if your programming system will not easily support it. The minimum data you should collect is test result data, total score, score represented as a percentage, and whether the student passed or failed according to the training standards.
Standardize the file names for CMI data.	This allows easy data consolidation and analysis across students and classes.
Keep track of the size and storage requirements for CMI files.	This is especially important for floppy disk based lessons. If you do not keep track of file sizes, you may run out of room and either lock up the lesson or lose some of the data you need.
Keep good software documentation.	One of the most important and costly aspects of ICW is maintenance. Detailed and accurate program documentation is critical to lesson maintenance. Keep lists of all program variables used, indicate their location, and purpose. Follow standard screen-naming conventions. Clearly identify any libraries used and the specific items within the libraries. Establish controls to keep those items from being modified without coordination. Assign a single person to function as librarian. Configuration management is critical to success.
Maintain master copies of all program data.	Keep in one package a set of master lesson disks and all lesson specifications.

MIL-HDBK-29612-3

TABLE 46. ICW programming guidelines - Continued.

GUIDELINE	RATIONALE
Implement DoD-STD-2167A Defense System Software Development, for programs developed outside of an authoring system.	Often, your authoring system will not support a function required for the ICW program and you will have to use an external program. When external programs are used, their structure, documentation and integration become important factors in the usability and support of the courseware. External programs must be well documented within the code itself. DoD-STD-2167A outlines both the software development process and the documentation required for DoD software.
If programming in an authoring systems language, program within a screen.	Some authoring systems provide an internal programming language to supplement the basic functions of the authoring tool. If you can program within a screen, you will significantly reduce access times while running the lesson.
Ensure the integrity of students' files.	Students' files should be protected so that not just anyone can get access to their records. Files can be easily password-protected with most ICW software programs.
Formatively evaluate the ICW software before implementing the program.	Even though most ICW programmers will take painstaking efforts to ensure the program's flawless execution, bugs can still exist. Programming flaws that cause unintentional directional flows or unanticipated characters to appear can cause a student to think the entire program is poorly designed.

6.1.1.9.2 Produce visual displays and record audio. This section presents guidelines for producing all ICW visual displays and recording audio.

6.1.1.9.2.1 Visual displays. The visual displays include full-motion video, still-frame video or photographs. Each visual display required in the ICW will be described in detail on the storyboard.

6.1.1.9.2.2 Guidelines for producing full-motion video. Using full-motion video in ICW is a very effective way to present information. Motion sequences are often recommended for demonstrating operational procedures. Producing full-motion video can be expensive, especially if professional talent is used, crews need to tape on location, special effects are used, and post-video production (editing) is extensive. Table 47 presents some guidelines for video production and rationales for implementation.

MIL-HDBK-29612-3

TABLE 47. Video production guidelines.

#	GUIDELINES	RATIONALE
1	Ensure that actors follow directives on dress and appearance while in uniform.	Service policy.
2	Ensure that sets are appropriate to actual work environment.	Enhances realism of ICW.
3	Ensure that actors comply with Occupational Safety and Health Administration (OSHA) directives.	Law.
4	Use consistent camera angles, lighting, and distance to emphasize similarities between objects. For analog Interactive Videodisc (IVD), show differences between objects by using the same shot and varying only the item that changes.	Reduces confusion for student and can reduce amount of time required to produce video.
5	If analog IVD is produced, tape and edit "cause and effect" sequences one after the other so they will appear side by side on the videodisc.	Provides a much smoother transition between video scenes, and a quicker response time back to the student.
6	Use the techniques "up from black" at the beginning and "fade to black" at the end of each video sequence.	Allows smooth transitions between scenes and from video to graphics or text.
7	Provide transition screens when moving from a wide-angle to an extreme close-up and highlight where the next screen will focus.	Helps to reinforce the relationship from wide-angle to close-up view.
8	Use video or graphic window overlays to show extreme close-ups of small objects such as knobs and switches in the context of the wider- angle view.	Allows the student to see things in detail.
9	Store all video for an analog IVD in the LaserVision format.	Service requirements.
10	If the storyboard is automated, use a laptop computer with the storyboard during video production to immediately enter Society of Motion Picture and Television Engineers (SMPTE) codes for selected shots onto storyboard.	Provides an automated edit-decision list and greatly reduces amount of time needed in post-video production.

## MIL-HDBK-29612-3

6.1.1.9.2.3 Guidelines for audio recording. Table 48 provides a few guidelines for audio production.

**TABLE 48. Audio production guidelines.**

#	GUIDELINE	RATIONALE
1	If analog IVD is being produced, use one sound track for narration and the other for sound effects.	Cost-effective. Narration can be recorded on one track while sound effects are recorded on the other.
2	In some instances, use both tracks to record narration.	Narration can be selectively presented. For example, narration in English can be stored on track 1 and narration in another language can be stored on track 2.
3	When analog audio is used, match the audio with the associated visual.	The visual must be displayed for the same length of time as the audio presentation.
4	Use a professional narrator and recording studio during production.	Greatly increases quality of ICW and reduces costs during production. While there are costs associated with using professional talent, money is often saved because it does not take them as long to learn and deliver their lines.

6.1.1.9.2.4 Develop text, graphics, and animation. This section presents guidelines for text, graphics, and animation production.

6.1.1.9.2.4.1 Guidelines for text, graphics, and animation displays. Table 49 provides guidelines for production of text, graphics, and animation displays in an ICW program.



## MIL-HDBK-29612-3

TABLE 49. ICW display convention guidelines.

TYPE OF DISPLAY	GUIDELINES	RATIONALE
Text	<ol style="list-style-type: none"> <li>1. Follow specifications in storyboard for color and font.</li> <li>2. If analog IVD is produced, avoid pressing text onto the laser disc.</li> </ol>	<ul style="list-style-type: none"> <li>• Product will be produced to match specification.</li> <li>• Hard to make changes.</li> </ul>
Graphics	<ol style="list-style-type: none"> <li>1. Follow sketches or drawings shown in storyboard.</li> <li>2. Use computer to generate graphics when possible.</li> <li>3. Identify graphics library code.</li> <li>4. Program graphics to appear on the screen before text or captions.</li> <li>5. Program large or complex graphics to appear on the screen in logical sections. Each section should finish drawing before the next begins.</li> <li>6. Program graphics so that the layer farthest away from the viewer is drawn first and finish with the items that are closest to the viewer.</li> <li>7. Use an arrow instead of a box or circle to highlight graphic objects.</li> </ol>	<ul style="list-style-type: none"> <li>• Product will be consistent with specification.</li> <li>• Can get better detail and more sophisticated-looking graphic.</li> <li>• Other developers can access the graphic for their lessons.</li> <li>• Easier for the student to comprehend presentation information.</li> <li>• Makes it easier for the student to view and understand what is being presented.</li> <li>• Makes it easier for the student to view and understand what is being presented.</li> <li>• Will help to avoid alignment problems between hardware systems.</li> </ul>
Animation	<ol style="list-style-type: none"> <li>1. If motion is the point of an animation, do not begin the animation until the entire screen appears, then prompt the student to begin the animation.</li> <li>2. If the result of motion is the focus, draw the object and then begin the animation. After the animation occurs, add labels, captions, text on the screen.</li> </ol>	<ul style="list-style-type: none"> <li>• Supports student control guidelines.</li> <li>• Helps to focus the student's attention on key elements.</li> </ul>

6.1.1.10 Develop supporting materials and comply with DoD ICW requirements. Instructor and user guides are often developed to support an ICW program. This section explains the purpose of supporting materials, and describes current DoD guidelines that apply to all ICW programs.

6.1.1.10.1 Purpose of supporting materials. Supporting materials should outline and describe all manual procedures required to load, start, and complete the ICW program. The guides should also describe procedures for managing the ICW program.

6.1.1.10.2 DoD guidelines for ICW. There are DoD guidelines for ICW. These requirements are documented in DODI 1322.20, Development and Management of ICW for Military Training. The basic guidelines for producing to DoD ICW requirements are as follows:

## MIL-HDBK-29612-3

- a. Use Defense Instructional Technology Information System (DITIS) to determine if existing programs can be used or modified to satisfy requirements.
  - (1) Add information about your ICW course topic and structure within 30 days of starting program development.
  - (2) Add information about the development software used and supporting hardware requirements within 30 days after completing your ICW development.
  - (3) Update the database if the ICW program is revised or taken out of service.
- b. Follow programming requirements that include:
  - (1) Arrange free and unlimited (for government purpose) rights to execute and distribute your ICW. You are not allowed to pay royalties or run-time fees for execution or distribution of the courseware. These rights must allow others to operate, distribute, or maintain the ICW on the government's behalf.
  - (2) ICW programs should comply with MIL-PRF-29612A.
  - (3) ICW lessons programmed in a software language, simulation models or unique device drivers must comply with the procedures and requirements of DoD-STD-2167. This does not apply to programs generated using an authoring system.
- c. Adhere to life cycle management requirements including:
  - (1) Develop a comprehensive logistics support package and documentation for your ICW program. This information will detail the procedures necessary to update, reproduce, and modify the ICW throughout its entire life cycle.
  - (2) A single office should be assigned the responsibility for life cycle management of your ICW program. That office should keep:
    - (a) A set of reproducible masters of the ICW program and all associated documentation masters.
    - (b) A circulation copy of the ICW and all materials needed to execute and conduct the training. This material must be available for other government agencies to review to determine if they can use the materials to meet their instructional needs.
    - (c) The life cycle management office must ensure the availability of tools and libraries, assemblers or compilers, ICW source code, and documentation.
- d. Other reporting requirements include:
  - (1) Submit media selection analysis and training evaluation reports through command channels for placement into the Defense Technical Information Center (DTIC) data banks within 30 days of completion.
  - (2) Validate and evaluate all ICW programs using students from target population, including guard and reserve students as appropriate.
  - (3) Advertise proposed procurement of ICW courseware or hardware and announce contract awards in the Commerce Business Daily (CBD) under "Training Services" or Training Aids and Devices."

## MIL-HDBK-29612-3

6.2 Electronic publications. An electronic publication is a document, prepared in a digital form, for electronic display to an end user. Two examples of electronic publications are electronic guides and IETMs.

6.2.1 Electronic guides. Training guides were traditionally paper-based documents and contained several hundred pages. Even a short guide could contain large numbers of drawings, schematics, and tables. There could also be many technical manuals containing thousands of pages including large numbers of graphics and schematics used in the guides. To develop an automated guide to aid instruction, ask the following questions :

- a. What guides are appropriate for automation of instructional presentations?
- b. How can we automate these materials most effectively and efficiently?
- c. Are there software tools available to support this development?
- d. What are the anticipated benefits of this development?
- e. What impact will this development have on student performance?
- f. What are the requirements for staff support and training?

6.2.2 Interactive Electronic Technical Manuals (IETM). An IETM is a technical manual delivered electronically. The IETM possesses the following three characteristics:

- a. An IETM can be presented either on a desktop workstation or a Portable Electronic Display Device (PEDD).
- b. The elements of technical data constituting the IETM are so interrelated that a user's access to the information is achievable by a variety of paths.
- c. The IETM can function to provide procedural guidance, navigational directions, and other technical information required by the user.

6.3 Electronic testing. Electronic testing is a general term used to encompass all methods for applying computers in the assessment and reporting of human attributes, knowledge, and skills. Most forms of electronic testing tailor or adapt the sequence, content, or difficulty of test items to the responses of the person being tested.

6.3.1 About electronic testing. Some IMI testing uses computer adaptive testing. As the individual is being tested the computer presents test items in response to the individual's actions. The electronic testing method utilizes branching to select test items based on the answers given while the test is being administered. Electronic testing involve adjustment of presentations, fidelity, and scenarios for simulation-based testing and adaptive selection of the tests themselves when a battery of tests is being administered. An important form of simulation-based testing is job-sample testing, which can be used to better classify personnel for job categories and specific jobs within them. Also notable is the use of electronic testing to administer items that can only be presented by computer, such as items requiring animated displays and precise timing of responses.

6.3.2 Benefits of electronic testing. Some of the benefits of electronic testing are the following:

- a. Reduced time for testing. By adapting in real time to the responses being made, computer adaptive testing can focus more quickly on attributes or levels of capabilities possessed by the person being tested.

## MIL-HDBK-29612-3

- b. Reduced costs for administration. Many administrative costs of recording, assessing, and interpreting responses and of reporting results are automated and can be avoided because test responses in electronic testing are recorded by computer as they are made.
- c. Increased test integrity. Electronic testing provides the ability to more carefully control the administration of tests and test items and therefore the tests have more integrity than is possible with paper-and-pencil testing or with tests administered by individuals.
- d. Improved training. Electronic testing provides more accessible and frequent assessment of learning during training and thereby allows better management of the progress of individuals toward instructional objectives.
- e. Improved assessment of crews, teams, and units. Electronic testing using simulations can provide measurement and assessment of crews, teams, and units that is currently unavailable or impracticable.
- f. Increased range of assessment. Electronic testing is likely to increase substantially the range of human attributes, knowledge, and skills that can be reliably measured and assessed with precision.
- g. Ease of checking test item validity. Automated test item response analysis allows writers of test items to more easily identify test items that do not accurately measure student knowledge or performance.

6.4 Simulation. Interaction with the surrounding environment is often a critical part of a task that must be trained. For real-time interactive training environments must sometimes be simulated. Typical applications include aircraft piloting, air traffic control, ship navigation, driving a tank, gunnery, missile control.

6.5 Electronic management systems. Electronic management systems are computer programs that aid in the instructional process. Programs in this category include decision support aids, tools to support the conduct and administration of instruction, and job aids.

6.5.1 Electronic Performance Support System (EPSS). An EPSS is an integrated electronic environment that is available to and easily accessible by each user. An EPSS is structured to permit performance with minimal support and intervention by others and provide immediate, individualized access to a broad range of:

- a. Information.
- b. Software.
- c. Guidance and assistance.
- d. Data.
- e. Images.
- f. Tools.
- g. Assessment and monitoring systems.

6.5.1.1 An EPSS can provide performance information. An EPSS is any computer software program or component that improves a user's performance by reducing the complexity or number of steps required to perform a task. The EPSS can either provide the user with performance information required to perform a task, or provide a decision support system that enables a user to identify the action that is appropriate for a particular set of conditions.

## MIL-HDBK-29612-3

6.5.1.2 An EPSS can reduce training costs. An EPSS can help an organization to reduce the training costs while increasing productivity and performance. It can empower a user to perform tasks with a minimum amount of external intervention or training. By using this type of system a user will be able to complete their work more quickly and accurately.

6.5.1.3 User interface. An EPSS should use a simple and consistent means of allowing the user access to information. Access to information should be gained by the same means as often as possible.

6.5.1.4 EPSS considerations. An EPSS is not always an acceptable instructional delivery method. Some factors to evaluate when considering an EPSS are frequency of performance, difficulty of performance, criticality of performance, and difficulty of learning.

6.5.2 Computer-Aided Instruction (CAI). CAI involves using computers to aid in the delivery of instruction. CAI exploits computer technology to provide for the storage and retrieval of information for both the instructor and student. Some CAI systems may be defined as an EPSS. To be considered an instructional EPSS the CAI system must provide the instructor immediate and tailored access to the full range of information, advice, and tools needed to perform instructional tasks with minimal support from outside sources.

6.5.2.1 What is CAI? CAI is the use of computer technology in the classroom. This may vary from a single instructor station used to enhance instructor performance to a fully networked classroom. In a fully networked classroom instructor and student stations are set up so that the instructor has complete control of the training environment. The instructor may observe each student station, lock out student functions, or assist a student from the instructor station. CAI may include a mix of Interactive Electronic Technical Manuals (IETMs) and ICW.

6.5.2.2 Reasons for using CAI. Information technology advances are changing the way DoD personnel operate and maintain equipment. IETMs are beginning to be used in the operational environment. The same technical manuals are used for classroom training. Therefore, DoD schoolhouses must incorporate IETMs into their training curricula to prepare personnel before they are assigned to operating activities. It makes sense to develop CAI where instructors and students can make use of advances in instructional development and computer technologies, in accessing IETMs, and other forms of digital instructional materials.

6.5.2.3 CAI and instructor support. CAI may consist of only an instructor workstation that supports automated development and delivery, or may be a full suite of student workstations networked to the instructor station. The CAI provides the instructor with an efficient means for developing and displaying personal course annotations, including related graphics, videos, IETMs, and other multimedia. Instructional treatments for instructor-student interaction, presentation of the course materials, student study, and monitoring student activities are controlled from the instructor workstation. These instructional treatments can be accomplished with the following capabilities:

- a. Automated instructor guides for directing instructor activities.
- b. Automated trainee guides that provide students additional course information and exercises for practice and study.
- c. IETMs that provide extensive course relevant technical information.
- d. Interconnected student and instructor workstation.

## MIL-HDBK-29612-3

- e. Student response monitoring for summarizing student responses and assignments.
- f. Instructor controlled multimedia presentations in a variety of media formats.

6.5.3 Computer Managed Instruction (CMI). CMI is software for course administration and management that provides information concerning performance trends, records individual and group performance data, schedules training, and provides support for other training management functions. The instructor has the responsibility to diagnose, to identify performance deficiencies, and to prescribe the next level of instruction.

6.5.4 Electronic job aids. Electronic job aids may be stand alone (e.g., EPSS) or embedded in other software applications (e.g., templates, macros, interactive tutorials, coaches).

## 7. INTERACTIVE MULTIMEDIA INSTRUCTION EVALUATION

7.1 Interactive Multimedia Instruction quality process. The quality process is an important part of Interactive Multimedia Instruction development. The quality process includes a combination of verification, validation, acceptance, and lessons learned to ensure training products meet training requirements. Evaluation is an inherent part of the Interactive Multimedia Instruction development process.

7.1.1 Verification. At this point in the Interactive Multimedia Instruction development process, learning objectives have been developed, test items written, instructional methods and media selected, and Interactive Multimedia Instruction is being developed. Yet, there is no assurance the Interactive Multimedia Instruction will be effective. Therefore, the Interactive Multimedia Instruction should undergo validation to prove that the instruction provides students with skills, knowledge, and attitudes to meet job performance requirements. If deficiencies are found in the Interactive Multimedia Instruction during validation, they are corrected before Interactive Multimedia Instruction implementation. Validation consists of technical accuracy review, individual tryouts, and small-group tryouts that are conducted as a part of formative evaluation and operational (field) tryouts that make up summative evaluation.

7.1.2 Validation. Validation evaluates the effectiveness of Interactive Multimedia Instruction while it is being developed with the intention of improving it. It is a repetitive process of development, tryouts, and revisions until evidence shows that the training accomplishes its intended purpose. When possible, validation is done as segments, units, or blocks of instruction are developed or revised. Validation is conducted to:

- a. Verify the effectiveness of training products and support materials in meeting objectives and goals.
- b. Determine beneficial improvements in the quality of training products and materials.
- c. Identify training product deficiencies.
- d. Improve efficiency and effectiveness of training objectives, sequence, products, and materials. In the "testing" context, it is the process of determining the degree of validity of a measuring instrument (e.g., skill qualification test, end of module test, and end of course comprehensive test).

7.1.3 Acceptance. Receiving verified and validated courseware/Interactive Multimedia Instruction, and acknowledging that the delivered product meets stated requirements.



## MIL-HDBK-29612-3

7.1.4 Document lessons learned. Document only what is necessary to alert others to essential “do’s” and “don’ts”, standards, conventions, and templates.

7.2 Develop a validation plan. For a training system to be effective, adequate planning should take place in the initial stages of Interactive Multimedia Instruction development. A part of that planning is the evaluation plan which often includes a plan of how the Interactive Multimedia Instruction is to be validated. These plans can be separate or can be subsets of other plans. Validation planning is essential for successful implementation of an Interactive Multimedia Instruction program.

7.2.1 Purpose. A validation plan provides Interactive Multimedia Instruction developers with a roadmap for validating the Interactive Multimedia Instruction. A validation plan provides organization and creditability to the validation process.

7.2.2 What is in a validation plan? Validation plans may contain the following:

- a. A description of instruction to be validated (e.g., learning objectives, method, media).
- b. Who will be conducting the validation.
- c. Validation procedures.
- d. Validation schedules.
- e. Program schedule constraints.
- f. Number of tryouts to be conducted in each of the tryout activities.
- g. Number and availability of students to be used in the tryouts.
- h. A description of how the results should be documented.
- i. Contingency plans.

7.2.3 Getting ready to validate. Prior to starting validation:

- a. Understand each activity in the validation process.
- b. Identify roles and responsibilities of the validation team members.
- c. Know when the activities are to occur. Verify plans, events, and milestones.
- d. Ensure that the Interactive Multimedia Instruction is ready for validation.
- e. Ensure that students have been scheduled.
- f. Know how to document any deficiencies.
- g. Know procedures for revising the Interactive Multimedia Instruction, if applicable.

7.2.4 How to use a validation plan. Using the plan, those validating the Interactive Multimedia Instruction follow the predetermined guidelines and standards for evaluating the effectiveness of the Interactive Multimedia Instruction under validation. Using the plan also provides organization to the process and adds credibility by providing a documented process.

7.2.5 Measure against a standard. Each component of the Interactive Multimedia Instruction is measured against a predetermined standard. If components of the Interactive Multimedia Instruction do not meet the criterion/standard, then an analysis of the component(s) should be conducted to determine why they do not meet the established standard. First, determine if the standard is realistic and valid. If so, then examine why the established standard is not being achieved. For example, a majority of the students are unable to accomplish a specific performance task in the time specified. A check of the technical data and with SMEs indicates that the standard is correct. A further analysis of the Interactive Multimedia Instruction

## MIL-HDBK-29612-3

lesson reveals that the task procedures are being taught incorrectly, thus causing additional time to be needed to complete the task. Validating each component of the Interactive Multimedia Instruction against standards established in the plan allows those components not meeting standards to be identified and corrected as necessary. This process ensures that the quality and effectiveness of the Interactive Multimedia Instruction will be maintained.

7.2.6 Follow the plan. Following the established guidelines in the validation plan ensures that the validation of the Interactive Multimedia Instruction is performed in an organized, timely manner with each component of the Interactive Multimedia Instruction being validated at the appropriate time in the process. For example, the plan identifies each component of the Interactive Multimedia Instruction, how each component will be validated, when each component will be validated, and the standard to be used in the validation process. The plan also serves as the basis for reporting results of the validation process.

7.3 Conduct technical accuracy reviews. The technical accuracy review, a formative evaluation activity, is the first step of the validation process. This review identifies inaccuracies and weaknesses in the Interactive Multimedia Instruction under review. Interactive Multimedia Instruction should be thoroughly reviewed, since this may be the last opportunity to revise draft materials before they are tried out on the students. If possible, and when applicable, conduct technical accuracy reviews each time Interactive Multimedia Instruction is developed, updated, or revised. Technical accuracy reviews may be conducted by:

- a. SMEs.
- b. Instructional developers.
- c. Instructors.

7.3.1 What should be reviewed? Instructional materials to be reviewed include, but are not limited to:

- a. Learning objectives.
- b. Test items.
- c. Interactive Multimedia Instruction.
- d. CMI features.

7.3.2 How to conduct a review. There are many ways to review Interactive Multimedia Instruction for accuracy, completeness, and quality. The bottom line is to cross-check the materials against the data sources such as technical orders, regulations, directives, and checklists. Use Table 50 to assist in conducting the internal review. This list is not all inclusive and should be modified to fit your program.



## MIL-HDBK-29612-3

TABLE 50. **Sample job aid for internal review.**

ITEM	DESCRIPTION	YES	NO
1	Is the content of the material accurate?		
2	Is the material current?		
3	Is the material complete?		
4	What are the "good" parts of the material?		
5	Are there any "bad" parts in the material?		
6	Does the sequence of the material build learning on learning?		
7	Are the practice exercises adequate?		
8	Are the review exercises adequate?		
9	Does the material/lesson effectively teach the behavior specified in the learning objective?		
10	Is the learning objective adequately evaluated?		
11	Is the content of the material compatible?		
12	Can the materials be improved? If so, how?		

a. When conducting a review, the reviewers should:

- (1) Take careful notes while conducting the review.
- (2) Make specific comments.
- (3) Identify weaknesses in the materials.
- (4) Recommend ways to improve the Interactive Multimedia Instruction.

b. After the review, the reviewers should:

- (1) Discuss their findings.
- (2) Determine what revisions or changes should be made to the Interactive Multimedia Instruction.
- (3) Decide the best way to make the necessary corrections to the Interactive Multimedia Instruction.
- (4) Make revisions and changes to the Interactive Multimedia Instruction, as applicable.

7.4 Conduct individual tryouts. Individual tryouts, a formative evaluation activity, are normally the next step in the validation process. During this step, as Interactive Multimedia Instruction is being developed, they are tried out on individual students. The Interactive Multimedia Instruction needs to be tried out on several students, if practical, in order to add validity and reliability to the data collected during the tryout.

7.4.1 Purpose. The purpose of an individual tryout is to determine the effectiveness of small segments or lessons as they are developed, updated, or revised.

7.4.2 Select students. A great deal of care should be used when selecting students to participate in the individual tryouts. During the selection process, consider the following factors:

## MIL-HDBK-29612-3

- a. If students do not fall within the predetermined range, tryout results can be skewed. Thus, student performance cannot be generalized to the target audience. Students selected for the tryouts should be from the target audience and fall within the predetermined range of:
  - (1) Aptitude.
  - (2) Skills.
  - (3) Attitude.
  - (4) Prior knowledge.
  - (5) Background experience.
- b. Students for the first tryouts should be selected from the upper percentage ranges in aptitude and background because:
  - (1) Brighter students are often more likely to point out and analyze weaknesses in the instruction and materials.
  - (2) If better students cannot learn the material, less capable students may not be able to learn the material.
  - (3) If lower-level students are used in the individual tryouts and they do well, there is no way to tell if the Interactive Multimedia Instruction is designed at the proper level.
  - (4) It is easier to work down from a known point of difficulty than to work up from an unknown point of difficulty.
  - (5) It is simpler to add material to make a lesson easier than to delete material to make it more difficult.

7.4.3 Before an individual tryout. If instructors are involved with the individual tryouts, they should be aware of their role and the role of the student. Before conducting the individual tryouts, instructional developers should prepare the students for the tryouts. Students need to know:

- a. The purpose of the tryout.
- b. Their role in the tryout.
- c. That they are not being evaluated; the training and material are.
- d. That their active participation is essential if the individual tryout is to be successful.
- e. That their feedback is necessary in determining adequacy of the Interactive Multimedia Instruction.

7.4.4 During an individual tryout. Sources of individual tryout information are provided in Table 51. During the individual tryouts, instructional developers should:

- a. Closely observe students as they use the material.
- b. Make careful note of where students seem to have problems or uncertainties.
- c. Give assistance to students only when it is essential to student progress.
- d. Administer the relevant test item at the appropriate time.
- e. Get the student's view about the difficulties encountered during the tryout.

## MIL-HDBK-29612-3

TABLE 51. Sources of individual tryout information.

SOURCE	ACTIVITY/INFORMATION
Diagnostic Tests	<ul style="list-style-type: none"> <li>Administer pretest to identify entry behavior.</li> <li>Administer posttest to assess learning as a result of the tryout.</li> </ul>
Student Performance During Learning	<ul style="list-style-type: none"> <li>Observe and record student's performance.</li> <li>Determine which exercises or tasks result in errors; types of errors; how many students are making the same error(s).</li> </ul>
Student Comments	<ul style="list-style-type: none"> <li>Get student reaction to the instruction and materials, especially their difficulties.</li> <li>Ask students for suggestions on how the IMI can be improved.</li> </ul>

7.4.5 Typical problems. Often, when conducting individual tryouts, problems are identified that are typically found during the first tryouts. Some examples are:

- a. Improper sequencing of the training.
- b. Instruction not clear and concise.
- c. Lack of supporting training materials.
- d. Confusing test items.
- e. Test items that do not measure learning objectives.
- f. Insufficient practice time.

7.4.6 After an individual tryout. When the individual tryouts have been completed, analyze the resulting data to determine if error patterns or problems have occurred on successive tryouts. If so, changes or revisions to the Interactive Multimedia Instruction may be appropriate. For example, if each student participating in the individual tryouts fails to meet the performance standard for a particular learning objective. Review the learning objective, Interactive Multimedia Instruction, and test items, and revise as necessary. In most cases, several tryouts should be conducted before making any significant revisions or changes to the Interactive Multimedia Instruction. When significant revisions or changes are required in the Interactive Multimedia Instruction, it is recommended that additional individual tryouts be conducted again in order to determine if the problem was solved.

7.5 Conduct small-group tryouts. After the individual tryouts have been completed and all necessary revisions have been made to the training, it is time to conduct the next stage of validation, which is the small-group tryouts. In this stage, which is the last activity in formative evaluation, the Interactive Multimedia Instruction is tried out on small groups of students. Up to this point, the success of the instruction has been based on a limited sampling of students with higher aptitudes. It should be pointed out that the Interactive Multimedia Instruction is developed for average students; thus, small-group tryouts are focused on the average group.

7.5.1 Purpose. The purpose of conducting small-group tryouts is to determine if the Interactive Multimedia Instruction works under conditions approximating the actual teaching-learner activity.

7.5.2 Select students. Student selection for the small-group tryout is again very important in terms of validating the effectiveness of the Interactive Multimedia Instruction. Students

## MIL-HDBK-29612-3

selected to participate in the tryout should be representative of the target audience. If possible, students selected should have:

- a. Even distribution between low and high aptitudes. Even distribution of students helps determine if the Interactive Multimedia Instruction will be effective under operational conditions.
- b. Varying skill levels.
- c. Different backgrounds.

**7.5.3 Number of students.** The number of students included in the small groups should be determined based on factors such as:

- a. Need for teams of students within the small group (e.g., some tasks may require students to work in teams of two; if so, the small-group size should be based on multiples of two).
- b. Planned normal group size of the operational system.
- c. Availability of equipment.
- d. Availability of facilities.

**7.5.4 Time is a critical factor.** To this point in the validation process, time required to perform a task has not been of major concern. However, time becomes a critical factor in the small-group tryouts. Learning the material or performing a task is not sufficient; students should be able to learn the information or perform the task within a reasonable time period. Therefore, effort should be made to develop training that can be accomplished within a realistic time period based on training requirements and the capability of average students.

**7.5.5 Before a small-group tryout.** The following should be completed before trying out training on small groups:

- a. Determine number of students to be included in the small group.
- b. Determine the number of groups to be used in the tryouts.
- c. Select representative students from the target audience.
- d. Ensure that the Interactive Multimedia Instruction have been revised to include the applicable information resulting from individual tryouts.
- e. Ensure that student materials are available in adequate quantities.
- f. Ensure that resources such as equipment, personnel, and facilities to be used during the tryout approximate the operational conditions.
- g. Ensure that the instructional information management system is operating for data collecting, analysis, and reporting.

**7.5.6 During a small-group tryout.** Do not supplement the instruction. Supplementing the instruction may skew the results of the tryout. When conducting small-group tryouts:

- a. Ensure that the time required for each student to complete the material is accurately recorded. This information is used to determine unit times, course length, and course content.
- b. Record accuracy of student responses. This information should help determine deficiencies in the Interactive Multimedia Instruction.
- c. Establish the number of trials a student should be permitted to meet performance requirements.

## MIL-HDBK-29612-3

**7.5.7 After a small-group tryout.** As with the individual tryout, if the Interactive Multimedia Instruction requires significant revisions or changes, it is recommended that additional small-group tryouts be conducted again to determine if the revisions were effective. Conduct a sufficient number of small-group tryouts to ensure that the data collected is both valid and reliable. Once the data has been collected, it should be analyzed to determine:

- a. Median time required to complete each segment or unit of training (this information is used to set the approximate times for lessons, segments, units, or modules of instruction).
- b. Need to revise equipment requirements, make changes to facilities, and adjust personnel authorizations.
- c. Interactive Multimedia Instruction requiring revisions or changes.
- d. Priority for accomplishing revisions or changes and plan of accomplishment.

**7.6 Finalize the Interactive Multimedia Instruction program.** After validating the training, finalize the Interactive Multimedia Instruction. During this step, make sure that all necessary changes are made to the Interactive Multimedia Instruction and it is ready for implementation.

**7.6.1 Purpose.** The purpose of finalizing the Interactive Multimedia Instruction is to ensure that it:

- a. Has been revised to include the most current and accurate information.
- b. Is complete.
- c. Is ready to use in the teaching-learner activity.

**7.6.2 What needs to be updated?** When finalizing training materials, update:

- a. Plans that have been developed.
- b. Course control documents.
- c. Training materials.

**7.6.3 Final quality check.** Prior to final release and implementation of the Interactive Multimedia Instruction, check to ensure that the following steps have been accomplished:

- a. The program has been updated.
- b. The programming is complete.
- c. The Interactive Multimedia Instruction has been operationally tested.

## 8. NOTES

**8.1 Intended use.** This handbook is intended to be used in conjunction with MIL-PRF-29612, MIL-HDBK-29612-1, MIL-HDBK-29612-2, and MIL-HDBK-29612-4 to aid in the application of Interactive Multimedia Instruction for training programs.

**8.2 CD-ROM destruction.** Currently there is no standard for the destruction of classified and classified-sensitive Compact Discs-Read Only Memory (CD-ROM). Special care is required for the incineration of CD-ROMs as fumes in high concentration can be toxic. MIL-HDBK-9660A, DoD-Produced CD-ROM Products, provides information for the destruction of CD-ROMs including addresses and shipping instructions for central destruction sites.

## MIL-HDBK-29612-3

### 8.3 Subject term (key word) listing.

Animations  
Computer-Aided Instruction (CAI)  
Computer Managed Instruction (CMI)  
Electronic guides  
Electronic Performance Support Systems (EPSS)  
Electronic publications  
Electronic testing  
Instructional media delivery system  
Interactive Courseware (ICW)  
Interactive Multimedia Instruction (IMI)  
Levels of interactivity  
Multimedia  
Simulations  
Training

**MIL-HDBK-29612-3**

**CONCLUDING MATERIAL**

**Custodians:**

**Army - AV**

**Navy - AS**

**Air Force – 94**

**DLA -DH**

**Preparing Activity:**

**Navy - AS**

**(Project ALSS-0078)**

**Review Activities:**

**Army – TM**

**Navy - EC, MC, SH, TD**

**Air Force – 11**

**NSA - NS**

**DLA- CC, GS, IS, DP**

# STANDARDIZATION DOCUMENT IMPROVEMENT PROPOSAL

## INSTRUCTIONS

1. The preparing activity must complete blocks 1, 2, 3, and 8. In block 1, both the document number and revision letter should be given.
2. The submitter of this form must complete blocks 4, 5, 6, and 7, and send to preparing activity.
3. The preparing activity must provide a reply within 30 days from receipt of the form.

NOTE: This form may not be used to request copies of documents, nor to request waivers, or clarification of requirements on current contracts. Comments submitted on this form do not constitute or imply authorization to waive any portion of the referenced document(s) or to amend contractual requirements.

### I RECOMMEND A CHANGE:

1. DOCUMENT NUMBER  
MIL-HDBK-29612-3

2. DOCUMENT DATE (YYYYMMDD)  
19990730

### 3. DOCUMENT TITLE

DEVELOPMENT OF INTERACTIVE MULTIMEDIA INSTRUCTION (IMI) (PART 3 OF 4 PARTS)

### 4. NATURE OF CHANGE *(Identify paragraph number and include proposed rewrite, if possible. Attach extra sheets as needed.)*

### 5. REASON FOR RECOMMENDATION

### 6. SUBMITTER

a. NAME *(Last, First, Middle Initial)*

b. ORGANIZATION

c. ADDRESS *(Include ZIP Code)*

d. TELEPHONE *(Include Area Code)*  
(1) Commercial  
(2) DSN  
*(If applicable)*

7. DATE SUBMITTED  
(YYYYMMDD)

### 8. PREPARING ACTIVITY

a. NAME  
COMMANDER  
NAVAL AIR WARFARE CENTER  
AIRCRAFT DIVISION

b. TELEPHONE *(Include Area Code)*  
(1) Commercial (2) DSN  
(732) 323-2947 624-2947

c. ADDRESS *(Include ZIP Code)*  
CODE 414100B120-3  
HIGHWAY 547  
LAKEHURST, NJ 08733-5100

**IF YOU DO NOT RECEIVE A REPLY WITHIN 45 DAYS, CONTACT:**  
Defense Standardization Program Office (DLSC-LM)  
8725 John J. Kingman Road, Suite 2533  
Fort Belvoir, Virginia 22060-6221  
Telephone (703) 767-6888 DSN 427-6888