

INCH-POUND

W-S-896/38  
 2 June 1993  
 SUPERSEDING  
 W-S-896/3A  
 23 August 1983

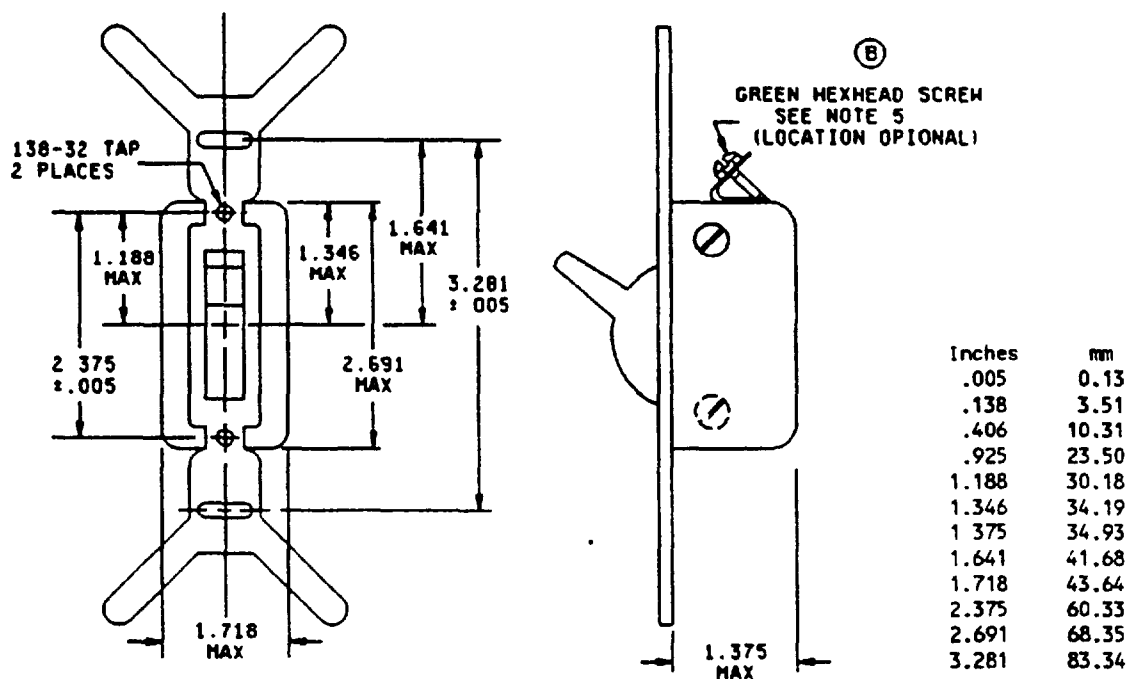
## FEDERAL SPECIFICATION SHEET

SWITCHES, TOGGLE HANDLE, FLUSH MOUNTED, MERCURY (AC)

(DETAIL SPECIFICATION)

This specification is approved by the Assistant Administrator, Federal Supply and Services, General Services Administration, for the use of all Federal agencies

The requirements for acquiring the product described herein shall consist of this specification sheet and the issue of the following specification listed in that issue of the Department of Defense Index of Specifications and Standards (DODISS) specified in the solicitation: W-S-896.



## NOTES:

1. Dimensions are in inches.
2. Metric equivalents are given for general information only.
3. The switch handle shall be of size to fit a wall plate cutout of .406 wide X .925 minimum high.
4. Exact shape of switch optional provided that envelope dimensions are not exceeded.
5. Green hex-head screw is for ground wire and is supplied only when specified by Part or Identifying Number (PIN).

FIGURE 1. Switch, toggle, mercury.

(B) denotes changes.

W-5-896/3E

## REQUIREMENTS

Design and construction See figure 1

Electrical ratings See table 1

Government part number WS896/3-(dash number from table 1)

## Examples

- (B) WS896/3-01A-G 120 volts, 15 amperes, single pole, brown handle, grounding terminal required
- WS896/3-01F 120 volts, 15 amperes, single pole, illuminated ivory locator light handle, no grounding terminal

(B) TABLE 1 Dash numbers and switch characteristics

Dash number 1/	Available options	Poles	Current rating ac only 120 volts
			Amperes
01	A, B, F	Single pole	15
02	A, B, F	Double pole	15
03	A, B, F	Three pole	15

- (B) 1/ The complete dash number will include an additional letter to indicate the applicable design of the actuating member. Add a "-G" suffix if a grounding terminal is required. Letters used to denote actuating member design are as follows:

A - Brown handle  
 B - Ivory handle  
 F - Illuminated ivory locator light

The locator light indicates a light which is operating when the circuit is open.

## CONCLUDING MATERIAL

## Military interests

## Custodians

Army - ER  
 Navy - YD  
 Air Force - 85

## Review activities

Air Force - 99

## User activity

Navy - CG, SH

## Civil agency coordinating activities

DC GOVT - DCG  
 GSA - FSS/7FXE  
 HHS - FEC

## Preparing activity

DLA - ES

(Project 5930-1483-02)