

INCH-POUND

W-C-375/20C
12 June 2009
 SUPERSEDING
 W-C-375/20B
 04 August 2004

FEDERAL SPECIFICATION SHEET

CIRCUIT BREAKERS, MOLDED CASE, BRANCH CIRCUIT
AND SERVICE, TYPE III, SERIES TRIP, TWO POLE
(10 THROUGH 100 AMPERES)

W-C-375/20 is inactive for new design and is no longer used, except for replacement purposes.

The General Services Administration has authorized the use of this federal specification sheet by all federal agencies.

The complete requirements for procuring circuit breakers described herein shall consist of this document and the latest issue in effect of [W-C-375](#).

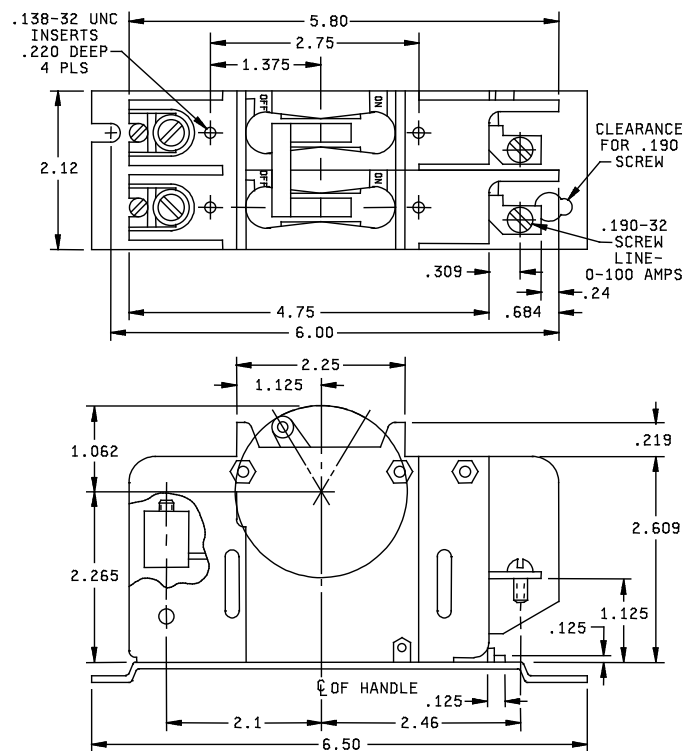


FIGURE 1. Interface and physical dimensions of two pole circuit breaker.

W-C-375/20C

Inches	mm	Inches	mm
.125	3.18	2.1	53.34
.138	3.51	2.12	53.85
.190	4.83	2.25	57.15
.219	5.56	2.265	57.53
.24	6.10	2.46	62.48
.309	7.64	2.609	66.27
.684	17.37	4.75	120.65
1.062	26.97	5.80	147.32
1.125	28.58	6.00	152.40
		6.50	165.10

NOTES:

1. Dimensions are in inches.
2. Metric equivalents are given for general information only.
3. Tolerance is ± 0.01 (0.25 mm) for two-place decimals and ± 0.005 (0.13 mm) for three-place decimals.
4. OFF position is also the tripped position.

FIGURE 1. Interface and physical dimensions of two pole circuit breaker - Continued.

W-C-375/20C

REQUIREMENTS:

Interface and physical dimensions: See figure 1.

Trip indication: See figure 1.

Electrical:

Interrupting current rating: 5,000 amperes.

Voltage rating: 120/240 V ac.

Current rating: See table I.

Frequency: 60 hertz.

Calibration: At +25°C.

Enclosure for overload, endurance, and short circuit tests: Cutler-Hammer loadcenter, or equivalent.

TABLE I. Part or Identifying Numbers (PINs) and current rating.

Government PIN	Current rating
WC375/20-001	10
WC375/20-002	15
WC375/20-003	20
WC375/20-004	25
WC375/20-005	30
WC375/20-006	35
WC375/20-007	40
WC375/20-008	50
WC375/20-009	60
WC375/20-010	70
WC375/20-011	100

TABLE II. Supersession and cross reference.

Government PIN	Superseded number CAGE 74193
WC375/20-001	2X0411-10-120/240-60-9
WC375/20-002	2X0411-15-120/240-60-9
WC375/20-003	2X0411-20-120/240-60-9
WC375/20-004	2X0411-25-120/240-60-9
WC375/20-005	2X0411-30-120/240-60-9
WC375/20-006	2X0411-35-120/240-60-9
WC375/20-007	2X0411-40-120/240-60-9
WC375/20-008	2X0411-50-120/240-60-9
WC375/20-009	2X0411-60-120/240-60-9
WC375/20-010	2X0411-70-120/240-60-9
WC375/20-011	2X0411-100-120/240-60-9

W-C-375/20C

The margins of this specification sheet are marked with vertical lines to indicate where changes from the previous issue were made. This was done as a convenience only and the Government assumes no liability whatsoever for any inaccuracies in these notations. Bidders and contractors are cautioned to evaluate the requirements of this document based on the entire content irrespective of the marginal notations and relationship to the last previous issue.

MILITARY INTERESTS:

Custodians:

Navy - YD
Air Force - 85
DLA - CC

Review activities:

Navy - MC, OS
Air Force - 99

CIVIL AGENCY COORDINATING ACTIVITIES:

GSA - FSS

Preparing activity:
DLA - CC

Project 5925-2009-012

NOTE: The activities listed above were interested in this document as of the date of this document. Since organizations and responsibilities can change, you should verify the currency of the information above using the ASSIST Online database at <http://assist.daps.dla.mil>.