

INCH-POUND

V-F-106F

AMENDMENT-2

April 20, 1990

SUPERSEDING

INT. Amendment-1 (Army-GL)

September 20, 1988

FEDERAL SPECIFICATION

FASTENER, SLIDE, INTERLOCKING

This amendment, which forms a part of V-F-106F, dated June 23, 1987, is approved by the Commissioner, Federal Supply Service, General Services Administration, for the use of all Federal agencies.

PAGE 4

Table V, under the indicated table headings: Add the following:

Style	Lock <u>1</u> /	Top stop	Bottom stop	Slider and slider arrangement <u>2</u> /
"7	Automatic open	Right-hand quick release	Right hand separating unit	Multiple (mouth to mouth)
8	Automatic open	Left hand quick release	Left hand separating unit	Multiple (mouth to mouth)

PAGE 6

2.1, under "Federal Specifications": Delete "L-P-392 - Plastic Molding Material, Acetal, Injection and Extrusion".

2.2, under "American Society for Testing and Materials (ASTM)": Add "D 4181 - Acetal (POM) Molding and Extrusion Materials".

PAGE 8

3.2.a.(1), line 10: Delete "1/32" and substitute "3/32".

AMSC N/A

FSC 5325

DISTRIBUTION STATEMENT A. Approved for public release; distribution is unlimited.

V-F-106F
Amendment 2

PAGE 9

3.2.3, line 3: Add the following: "As an alternate to stirrup pull, long tab pulls with holes large enough to accommodate a thong may be used, unless otherwise designated".

PAGE 12

3.3.9, line 10: Delete "L-P-392" and substitute "ASTM D 4181"

PAGE 13

3.4.1.1, first and second sentences: Delete and substitute "The two bottom tape ends of type IV and V fasteners shall be treated on the tape face or back to prevent ravelling or fraying. The treatment shall be across the full width (+1/16, -1/8 inch) of the tape, for a distance no less than 3/16 inch from the bottom of each tape. As an alternate, the face and back of each bottom tape end shall be treated so the treatment abuts and extends not less than 3/8 inch beyond the retainer on the other tape. The alternate treatment shall extend no less than 3/16 inch from the bottom of each tape. All top tape ends shall be prevented from ravelling or fraying by coating tape, by bonded reinforcement, by impregnation, by cutting with a hot knife, by ultrasonic sealing, or by pinking."

3.4.3.1: Delete and substitute:

"3.4.3.1 Water-resistant treatment. When water resistance treatment is specified (see 3.4.1 and 6.2.n.), the tapes shall be tested for water resistance. Treated tapes, except those of 100 percent polyester, shall not absorb more than 40 percent water based on the weight of the tape when tested after one laundering as specified in 4.5.13. 100 percent polyester treated tape shall not absorb more than 9.5 percent water based on the weight of the tape when tested after one laundering as specified in 4.5.13."

PAGE 53

5.3, lines 5 and 6: Delete "K and L or film bonding means O or P." and substitute "C and D or film bonding means F or G."

PAGE 56

6.6: Add new sub-letter c. as follows:

"c. If part a. and b. equipment is not available, then use of the apparatus in accordance with ASTM D 2060 (see 4.5.19) is permitted."

PAGE 57

Figure 1: Delete and substitute the attached figure 1:

V-F-106F
Amendment 2

MILITARY INTERESTS:

Custodians

Army - GL
Navy - AS
Air Force - 99

Review activities

Army - MI
Air Force - 82
DLA - IS

User activities

Navy - MC, NU, OS, SA

CIVIL AGENCY COORDINATING ACTIVITIES:

GSA - FSS
VA - OSS
USDA - AFS

PREPARING ACTIVITY:

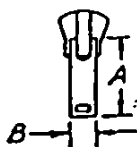
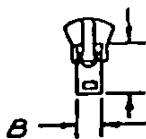
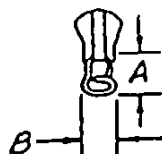
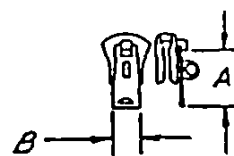
Army - GL

(Project 5325-0291)

V-F-106F
Amendment 2



CHAIN PULL

LONG TAB
PULLSHORT TAB
PULLSTIRRUP
PULL

PADLOCK PULL

PULL DIMENSIONS		
PULL TYPE	A	B
	OVERALL LENGTH	OVERALL WIDTH
CHAIN	AS SPECIFIED	NOT MORE THAN 1/8 WIDER THAN SLIDER
LONG TAB	1 1/2" (NOMINAL) *	
SHORT TAB	1" (MAXIMUM)	
STIRRUP	MFG STANDARD PRACTICE	
PADLOCK	AS SPECIFIED	
*1 in. (MINIMUM) EXCEPT 7/8 in.(MINIMUM) ON CONTINUOUS ELEMENT CHAIN		

COMBINATIONS OF SLIDER PULLS, LOCKS AND SIZES		
TYPE LOCK	TYPE PULL	SIZES
AUTOMATIC	CHAIN	L, LS, LM, LMS, M, AND MS
	LONG TAB	ALL EXCEPT L AND LS
	SHORT TAB	ALL
	STIRRUP	MH, MHS AND H
FLANGE	CHAIN	L, LS, LM, LMS, M AND MS
	LONG TAB *	ALL
	SHORT TAB *	ALL
	STIRRUP *	MH, MHS AND H
PIN OR CAM	LONG TAB	ALL EXCEPT L AND LS
	PADLOCK	LM, LMS, M AND MS
	SHORT TAB	ALL EXCEPT MHS AND H
WITHOUT LOCK	CHAIN	L, LS, LM, LMS, M AND MS
	LONG TAB	ALL
	SHORT TAB	ALL
	STIRRUP *	MH, MHS AND H
* SINGLE OR MULTIPLE PULLS AS SPECIFIED		

NOTE:

ILLUSTRATIONS ARE DESCRIPTIVE
AND NOT RESTRICTIVE.

FIGURE 1. PULL TYPES AND COMBINATIONS

4-1-165