

UNIFIED FACILITIES CRITERIA (UFC)

DESIGN: TRACKAGE



APPROVED FOR PUBLIC RELEASE; DISTRIBUTION UNLIMITED

UNIFIED FACILITIES CRITERIA (UFC)

DESIGN: TRACKAGE

Any copyrighted material included in this UFC is identified at its point of use.
Use of the copyrighted material apart from this UFC must have the permission of the
copyright holder.

U.S. ARMY CORPS OF ENGINEERS

NAVAL FACILITIES ENGINEERING COMMAND (Preparing Activity)

AIR FORCE CIVIL ENGINEERING SUPPORT AGENCY

Record of Changes (changes indicated by \1\ ... /1/)

<u>Change No.</u>	<u>Date</u>	<u>Location</u>

UFC 4-860-02N
16 January 2004

FOREWORD

The Unified Facilities Criteria (UFC) system is prescribed by MIL-STD 3007 and provides planning, design, construction, sustainment, restoration, and modernization criteria, and applies to the Military Departments, the Defense Agencies, and the DoD Field Activities in accordance with [USD\(AT&L\) Memorandum](#) dated 29 May 2002. UFC will be used for all DoD projects and work for other customers where appropriate. All construction outside of the United States is also governed by Status of forces Agreements (SOFA), Host Nation Funded Construction Agreements (HNFA), and in some instances, Bilateral Infrastructure Agreements (BIA.) Therefore, the acquisition team must ensure compliance with the more stringent of the UFC, the SOFA, the HNFA, and the BIA, as applicable.

UFC are living documents and will be periodically reviewed, updated, and made available to users as part of the Services' responsibility for providing technical criteria for military construction. Headquarters, U.S. Army Corps of Engineers (HQUSACE), Naval Facilities Engineering Command (NAVFAC), and Air Force Civil Engineer Support Agency (AFCESA) are responsible for administration of the UFC system. Defense agencies should contact the preparing service for document interpretation and improvements. Technical content of UFC is the responsibility of the cognizant DoD working group. Recommended changes with supporting rationale should be sent to the respective service proponent office by the following electronic form: [Criteria Change Request \(CCR\)](#). The form is also accessible from the Internet sites listed below.

UFC are effective upon issuance and are distributed only in electronic media from the following source:

- Whole Building Design Guide web site <http://dod.wbdg.org/>.

Hard copies of UFC printed from electronic media should be checked against the current electronic version prior to use to ensure that they are current.

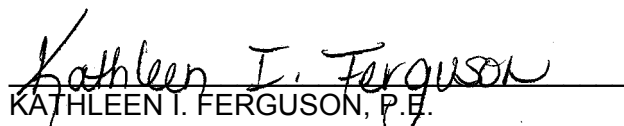
AUTHORIZED BY:



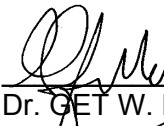
DONALD L. BASHAM, P.E.
 Chief, Engineering and Construction
 U.S. Army Corps of Engineers



DR. JAMES W. WRIGHT, P.E.
 Chief Engineer
 Naval Facilities Engineering Command



KATHLEEN I. FERGUSON, P.E.
 The Deputy Civil Engineer
 DCS/Installations & Logistics
 Department of the Air Force



Dr. GET W. MOY, P.E.
 Director, Installations Requirements and
 Management
 Office of the Deputy Under Secretary of Defense
 (Installations and Environment)

CONTENTS

	Page
CHAPTER 1 INTRODUCTION	
Paragraph 1-1 PURPOSE AND SCOPE	1-1
1-2 APPLICABILITY	1-1
1-2.1 General Building Requirements	1-1
1-2.2 Safety	1-1
1-2.3 Fire Protection	1-1
1-2.4 Antiterrorism/Force Protection	1-1
1-3 REFERENCES	1-1
APPENDIX A MIL-HDBK 1005/6.....	A-1

CHAPTER 1

INTRODUCTION

1-1 **PURPOSE AND SCOPE.** This UFC is comprised of two sections. Chapter 1 introduces this UFC and provides a listing of references to other Tri-Service documents closely related to the subject. Appendix A contains the full text copy of the previously released Military Handbook (MIL-HDBK) on this subject. This UFC serves as criteria until such time as the full text UFC is developed from the MIL-HDBK and other sources.

This UFC provides general criteria for the design of trackage.

Note that this document does not constitute a detailed technical design, maintenance or operations manual, and is issued as a general guide to the considerations associated with design of economical, efficient and environmentally acceptable heating plants.

1-2 **APPLICABILITY.** This UFC applies to all Navy service elements and Navy contractors; Army and Air Force service elements should use the appropriate references cited in paragraph 1-3 below; all other DoD agencies may use either document(s) unless explicitly directed otherwise.

1-2.1 **GENERAL BUILDING REQUIREMENTS.** All DoD facilities must comply with UFC 1-200-01, *Design: General Building Requirements*. If any conflict occurs between this UFC and UFC 1-200-01, the requirements of UFC 1-200-01 take precedence.

1-2.2 **SAFETY.** All DoD facilities must comply with DODINST 6055.1 and applicable Occupational Safety and Health Administration (OSHA) safety and health standards.

NOTE: All **NAVY** projects, must comply with OPNAVINST 5100.23 (series), *Navy Occupational Safety and Health Program Manual*. The most recent publication in this series can be accessed at the NAVFAC Safety web site: www.navfac.navy.mil/safety/pub.htm. If any conflict occurs between this UFC and OPNAVINST 5100.23, the requirements of OPNAVINST 5100.23 take precedence.

1-2.3 **FIRE PROTECTION.** All DoD facilities must comply with UFC 3-600-01, *Design: Fire Protection Engineering for Facilities*. If any conflict occurs between this UFC and UFC 3-600-01, the requirements of UFC 3-600-01 take precedence.

1-2.4 **ANTITERRORISM/FORCE PROTECTION.** All DoD facilities must comply with UFC 4-010-01, *Design: DoD Minimum Antiterrorism Standards for Buildings*. If any conflict occurs between this UFC and UFC 4-010-01, the requirements of UFC 4-010-01 take precedence.

1-3 **REFERENCES.** The following Tri-Service publications have valuable information on the subject of this UFC. When the full text UFC is developed for this

UFC 4-860-02N
16 January 2004

subject, applicable portions of these documents will be incorporated into the text. The designer is encouraged to access and review these documents as well as the references cited in Appendix A.

1. US Army Corps of Engineers
Commander
USACE Publication Depot
ATTN: CEIM-IM-PD
2803 52nd Avenue
Hyattsville, MD 20781-1102
(301) 394-0081 fax: 0084
karl.abt@hq02.usace.army.mil
<http://www.usace.army.mil/inet/usace-docs/>

AFM 32-1046, Railroad Design and Rehabilitation, 31 October 1995
USACE EM 1110-3-152, Railroads, Mobilization and Construction, 09 April 1984
USACE TM 5-627, Maintenance of Trackage, 01 January 1980

USACE TM 5-628, Railroad Track Standards, 08 April 1991
USACE TL 1110-1-156, Railroad Track - Design and Evaluation Computer Program for Work Planning, 31 August 1993

UFC 4-860-02N
16 January 2004

APPENDIX A

**MIL-HDBK 1005/6
TRACKAGE**

MIL-HDBK-1005/6

ABSTRACT

Design criteria are presented for use by qualified engineers in designing naval facility trackage for both railroads and wide gage portal cranes. Criteria for railroad trackage include those for roadbeds, ballast, ties, rails, track grade, turnouts, crossovers, highway crossings, sidings, warehouse trackage, track scales, and yards; those for portal crane trackage cover rails, rail supports, turnouts, crossings, alignment, components, curves, and design procedures.

MIL-HDBK-1005/6

FOREWORD

This handbook is one of a series developed from an evaluation of facilities in the shore establishment, from surveys of the availability of new materials and construction methods, and from selection of the best design practices of the Naval Facilities Engineering Command (NAVFACENGCOM), other Government agencies, and the private sector. This handbook uses, to the maximum extent feasible, national professional society, association, and institute standards in accordance with NAVFACENGCOM policy. Deviations from these criteria should not be made without prior approval of NAVFACENGCOM Headquarters Code 04.

Design cannot remain static any more than can the functions it serves or the technologies it uses. Accordingly, recommendations for improvement are encouraged from within the Navy, other Government agencies, and the private sector and should be furnished on the DD Form 1426 provided inside the back cover to Commanding Officer, Naval Facilities Engineering Command, Code 04, Northern Division, Building 77-Low, U.S. Naval Base, Philadelphia, PA 19112-5094, phone (215) 897-6153.

DO NOT USE THIS HANDBOOK AS A REFERENCE DOCUMENT FOR PROCUREMENT OF FACILITIES CONSTRUCTION. IT IS TO BE USED IN THE PURCHASE OF FACILITIES ENGINEERING STUDIES AND DESIGNS (PLANS, SPECIFICATIONS, AND COST ESTIMATES). DO NOT REFERENCE IT IN MILITARY OR FEDERAL SPECIFICATIONS OR OTHER PROCUREMENT DOCUMENTS.

MIL-HDBK-1005/6

CIVIL ENGINEERING CRITERIA MANUALS

<u>Number</u>	<u>Title</u>
MIL-HDBK-1005/2	Hydrology
MIL-HDBK 1005/3	Drainage Systems
DM-05.04	Pavements
DM-05.05	General Provisions and Geometric Design for Roads, Streets, Walks, and Open Storage Areas
MIL-HDBK-1005/6	Trackage
MIL-HDBK-1005/7	Water Supply Systems
MIL-HDBK-1005/8	Domestic Wastewater Control
MIL-HDBK-1005/9	Industrial and Oily Wastewater Control
DM-05.10	Solid Waste Disposal
DM-05.12	Fencing, Gates, and Guard Towers
MIL-HDBK-1005/13	Hazardous Waste Storage Facilities
DM-05.14	Groundwater Pollution Control - Design Criteria and Procedures for Analysis

MIL-HDBK-1005/6

CIVIL ENGINEERING TRACKAGE

CONTENTS

	<u>Page</u>
CHAPTER 1. RAILROAD TRACKAGE	
Section 1. SCOPE AND RELATED CRITERIA	
1.1 Scope.....	1
1.2 Design Criteria Usage.....	1
1.3 Cancellation.....	1
1.4 Additional Criteria.....	1
1.5 Policy.....	1
a) Where Separation is Possible.....	1
b) Where Separation is Impossible.....	1
1.6 Railroad Trackage Standards.....	1
1.7 Railroad Car Curvature Standards.....	2
1.8 Federal Railroad Administration (FRA) Track Safety Standards.....	2
Section 2. ROADWAY	
2.1 Width.....	3
2.1.1 Cut Sections.....	3
2.1.2 Fill Sections.....	3
2.1.3 Minimum Cut Dimensions.....	3
2.2 Slopes and Subgrade.....	3
2.2.1 Slope.....	3
2.2.2 Subgrade.....	3
2.3 Geotextile Fabrics.....	3
2.4 Drainage.....	4
2.5 Monuments.....	4
Section 3. BALLAST AND SUB-BALLAST	
3.1 Economics.....	5
3.2 Specifications and Applications.....	5
3.3 Depth.....	5
3.4 Cross Section Dimensions.....	5
3.5 Shrinkage Allowance.....	5
Section 4. TIES	
4.1 Specifications and Applications.....	6
4.1.1 Wood Ties.....	6
4.1.2 Concrete Ties.....	6
4.1.3 Ties of Other Materials.....	6

MIL-HDBK-1005/6

		<u>Page</u>
4.2	Economic Service Life and Tests.....	6
4.3	Handling and Protection of Timber Ties.....	6
4.4	Dimensions.....	6
4.4.1	Cross Ties.....	6
4.4.2	Timber Switch Ties.....	6
4.4.3	Bridge or Trestle Ties.....	6
4.5	Tie Spacing.....	6
4.5.1	Running Track.....	7
4.5.2	Yards and Sidings.....	7
4.5.3	Switches and Crossovers.....	7
Section 5.	TRACK	
5.1	Rail Specifications.....	8
5.1.1	Material.....	8
5.1.2	Rail Drilling.....	8
5.1.3	Curved Rail.....	8
5.2	Gage.....	8
5.3	Spikes.....	8
5.3.1	Holes Bored for Spikes.....	8
5.3.2	Spike Quantities.....	8
5.4	Tie Plates.....	9
5.5	Rail Joint Spacing.....	9
5.6	Rail Joint Bar.....	9
5.7	Bolts and Nuts for Rail Joint Bar.....	9
5.8	Spring Washers.....	9
5.9	Rail Anchors.....	9
5.10	Rail Gage Rods.....	9
5.11	Rail Braces.....	9
5.12	Guardrails.....	9
5.12.1	Gaging.....	10
5.12.2	Material.....	10
5.13	Track Construction.....	10
Section 6.	RUNNING TRACK GRADE AND ALIGNMENT	
6.1	Gradient.....	11
6.2	Curves.....	11
6.2.1	Ruling Radii, Horizontal.....	11
6.2.2	Reverse Curves.....	11
6.2.3	Vertical Curves.....	11
6.3	Superelevation.....	11
6.4	Track Centerline Spacing.....	11
6.5	Clearances.....	12

MIL-HDBK-1005/6

		<u>Page</u>
Section 7.	TURNOUTS AND CROSSOVERS	
7.1	Turnouts.....	13
7.2	Connecting Curves.....	13
7.3	Crossovers.....	13
	a) Description.....	13
	b) Reverse Curves.....	13
7.4	Turnout Location.....	13
Section 8.	HIGHWAY GRADE CROSSING	
8.1	Width of Crossing.....	14
8.2	Profile of Crossings.....	14
8.3	Materials for Crossings.....	14
8.3.1	Heavily Traveled Roads.....	14
8.3.2	Lightly Traveled Roads.....	14
8.4	Sign, Signals, Automatic Crossing Gates and Floodlighting.....	14
Section 9.	TRACKAGE IN PAVEMENT	
9.1	Highway Grade Crossing.....	15
9.2	Specifications.....	15
9.2.1	Bituminous Pavement.....	15
9.2.2	Concrete Pavement.....	15
9.3	Turnouts.....	15
Section 10.	SIDINGS	
10.1	Track Centerline Spacing.....	17
10.2	Minimum Tangent Distance.....	17
10.3	Gradients.....	17
10.4	Track Ends.....	17
Section 11.	WAREHOUSE TRACKAGE	
11.1	Gradient Apportionment.....	18
11.2	Horizontal and Vertical Clearances.....	18
11.3	Warehouse Railroad Layout.....	18
Section 12.	TRACK SCALES	
12.1	Scales.....	19
12.1.1	Static Scale.....	19
12.1.2	Weight-in-Motion Scale.....	19
12.2	Selection.....	19

MIL-HDBK-1005/6

		<u>Page</u>
12.3	Location.....	19
12.4	Alignment.....	19
12.5	Dead Rails.....	19
Section 13.	YARDS	
13.1	Scope.....	20
13.2	General Considerations.....	20
13.2.1	Fire Protection.....	20
13.2.2	Theft and Vandalism.....	20
13.2.3	Efficiency.....	20
13.2.4	Expansion.....	20
13.2.5	Track Capacity.....	20
13.2.6	Yard Lighting.....	20
13.2.7	Drainage.....	20
13.2.8	Communications.....	20
13.3	Track Arrangements.....	20
13.3.1	Body Tracks.....	21
13.3.2	Ladder Tracks.....	21
13.4	Gradients	21
13.5	Reverse Curves.....	21
Section 14.	RAILROAD BRIDGES AND TRESTLES	
14.1	Design.....	22
CHAPTER 2.	WIDE GAGE PORTAL CRANE TRACKAGE	
Section 1.	CRITERIA AND TYPES	
1.1	Scope.....	23
1.2	Additional Criteria.....	23
1.3	Policy.....	23
1.4	Types of Portal Crane Trackage.....	23
1.4.1	Two-Rail System.....	23
1.4.2	Four-Rail System.....	23
Section 2.	TRACKAGE COMPONENTS	
2.1	Rails.....	24
2.2	Turnouts and Crossings.....	24
2.2.1	Switches (Two-Rail System).....	24
2.2.1.1	Switches.....	24
2.2.1.2	Material.....	24
	a) Cast.....	24
	b) Fabricated.....	24
2.2.1.3	Wheel Loads.....	24

MIL-HDBK-1005/6

	<u>Page</u>	
2.2.2	Frogs (Two-Rail Track System).....	24
2.2.2.1	Rigid Frogs.....	24
2.2.2.2	Turntable Frogs.....	24
2.2.2.3	Materials.....	24
	a) Cast Turntable Frogs.....	25
	b) Fabricated Rigid Frogs.....	25
	c) Fabricated Turntable Frogs.....	25
2.2.2.4	Wheel Loads.....	25
2.2.3	Frogs (Four-Rail Track System).....	25
2.2.3.1	Rigid Frogs.....	25
2.2.3.2	Material.....	25
2.2.3.3	Wheel Loads.....	25
2.2.4	Standard Gage Fittings.....	25
2.2.4.1	Tongue and Mate Switches.....	25
2.2.4.2	Guarded Split Switch.....	25
2.2.4.3	Railroad Type Frogs.....	25
2.2.5	Manual Calculations (Two-Rail Switch).....	25
2.2.5.1	Flangeway Spacing Computation.....	26
2.2.5.2	Circle Offset Computation.....	26
2.2.5.3	Linear Offset Computation.....	26
Section 3.	PORTAL CRANE TRACK CURVE ALIGNMENT	
3.1	Applications.....	29
3.1.1	Problem Description.....	29
3.2	Reduced Gage.....	29
3.3	Crane Equivalent Length.....	29
3.4	Lateral Float.....	29
3.4.1	Radius.....	29
3.4.2	Minimum Radius.....	30
3.4.3	Float for New Cranes.....	30
3.4.4	Transferring from One Track System to Another.....	30
3.5	Transition Curve (Inside or Control Curve). Gage Reduction.....	30
3.5.1		30
3.6	Switch Curve (Inside or Control Curve).....	30
3.6.1	Switch Alignment.....	30
3.7	Main Circular Curve (Inner).....	30
3.7.1	General Requirements.....	30
3.7.2	Selection of Radius.....	31
3.8	Complete Curve Combination.....	31
3.8.1	Transition Curve.....	31
3.8.2	Tangent Length.....	31
3.9	Reserve Curve.....	31
3.10	Transition Curve (Outside).....	31
3.10.1	Central Angle.....	32

MIL-HDBK-1005/6

	<u>Page</u>
3.10.2	Radii..... 32
3.10.3	Gage Reduction..... 32
3.10.4	Alignment Closure..... 32
3.11	Switch Curve (Outside)..... 32
3.11.1	Location..... 32
3.11.2	Convergence..... 32
3.11.3	Lead..... 32
3.12	Main Circular Curve (Outside)..... 32
3.12.1	Central Angle..... 32
3.12.2	Radius..... 32
3.12.3	Gage Reduction..... 32
3.13	Design Procedure..... 33
3.14	Sample Curve Computation..... 33
3.15	Tabulation of Sample Curve Computation..... 33
3.16	Drydock Head-End..... 33
3.17	Vertical Alignment..... 33
3.17.1	Example of Vertical Alignment..... 34
3.17.2	Application..... 35
3.17.3	Suspension..... 35
3.17.4	Vertical Position..... 35
3.17.5	Balance..... 35
3.18	Symbols and Nomenclature..... 36
Section 4.	PORTAL CRANE TRACK REPLACEMENT CURVE ALIGNMENT
4.1	Guidance..... 60
4.2	Survey Requirements..... 60
	a) Transit and Distance Measurement Tolerance 60
	b) Dig-Up Survey Measurement Tolerance.... 60
4.3	Foundation Structural Analysis Requirements 60
4.4	Replacement Track Design Requirements..... 60
	a) Deviations..... 61
	b) Offset Closures..... 61
	c) Tangent Closures..... 61
	d) Required Float..... 61
	e) Design Gage..... 61
	f) Physical Obstructions..... 61
4.5	Rail Construction Requirements..... 61
REFERENCES	63

MIL-HDBK-1005/6

FIGURES

Figure	Title	Page
1	Railroad Track Support	16
2	Minimum Rigid Frog Angle-Portal Crane Rails.....	27
3	Flangeway Width Calculation.....	28
4	Gage Reduction Diagram (32-Wheel Crane).....	37
5	24 Wheel Crane Equivalent Length.....	38
6	Travel Bases for Cranes.....	39
7	Relationships of Curves.....	40
8	Functions of Inner or Control Curve.....	41
9	Relation Between Inner and Outer Curve Stationing and Transition Curve Arc Definition.....	42
10	Crane Reaction to Grades on Horizontal Curves.....	43

Table	Title	Page
1	Design Procedure.....	44
2	Sample Curve Composition.....	51
3	Tabulation of Sample Curve Composition.....	54
4	Symbols and Nomenclature.....	56

MIL-HDBK-1005/6

CHAPTER 1. RAILROAD TRACKAGE

Section 1: SCOPE AND RELATED CRITERIA

1.1 Scope. This chapter covers criteria for the design of naval facility trackage. Included are roadways, ballast, ties, rails, track grade, turnouts, crossovers, highway crossings, sidings, warehouse trackage, track scales, and yards. For portal crane trackage, see Chapter 2 of this handbook.

1.2 Design Criteria Usage. The criteria presented herein are applicable to the design of new trackage and for major rehabilitations. Where conditions will not permit their use prior approval is required from NAVFACENGCOM Headquarters. Requirements for maintenance, minor repair, and replacement of existing trackage, which is being successfully used, are presented in other appropriate NAVFAC Maintenance Manuals and instructions and are not required to be in accordance with these design criteria.

1.3 Cancellation. This handbook, MIL-HDBK-1005/6, dated 30 April 1992, cancels and supersedes NAVFAC DM-5.6 dated November 1981.

1.4 Additional Criteria. A list of criteria documents related to Civil Engineering is presented in the front of this handbook. See MIL-HDBK-1025/1, Piers and Wharves for criteria on rail supports (deck fittings), wheel loads, and trackage location and arrangement on waterfront structures (deck structure design). All documents referenced in this handbook are listed in the References section located at the end of this handbook. Unless specifically stated otherwise, use the current editions of all referenced documents.

1.5 Policy. When planning track layouts, railroad trackage should be separated, wherever possible, from portal crane trackage because, apart from the similarity of the rails, the requirements for portal crane trackage are completely different from railroad trackage.

a) Where Separation is Possible. Provide separation to insure:

- (1) Maximum efficiency of both types of trackage.
- (2) Elimination of switching hazards.
- (3) Free passage of rolling stock under cranes.

b) Where Separation is Impossible. Where both cranes and rolling stock utilize a common rail, the other railroad rail shall be placed between the crane rails.

1.6 Railroad Trackage Standards. Standards in railroad trackage design appear in:

- a) American Railway Engineering Association (AREA) Manual for Railway Engineering;
- b) AREA Portfolio of Trackwork Plans, (companion volume to AREA Manual for Railway Engineering); and
- c) Military Standards (MIL-STD) as listed. State and local regulations should be observed where practicable.

MIL-HDBK-1005/6

The AREA Manual is revised annually and the user shall refer to the current edition, which can be verified by contacting the AREA at: 50 F Street, N.W., Washington, D.C. 20001. Manual owners receive revision notices yearly. AREA references in this chapter of MIL-HDBK-1005/6 are keyed to the 1990 AREA Manual.

1.7 Railroad Car Curvature Standards. Minimum curvature negotiability standards for railroad cars appear in Section 2.1, Design Data, Association of American Railroads (AAR) - Mechanical Division, Specifications for Design, Fabrication and Construction of Freight Cars, Volume 1.

1.8 Federal Railroad Administration (FRA) Track Safety Standards. The Code of Federal Regulations (CFR) Title 49 Part 213 - Track Safety Standards prescribe minimum safety standards which may be used by maintenance personnel. Under these standards tracks are classified as Class 1, 2, 3, 4, 5, or 6 wherein the maximum allowable speed limits for freight and passenger trains are assigned to each class. If a segment of track does not meet all the conditional requirements for its intended class it is classified to the next lowest class for which it does meet all the requirements. The FRA Track Safety Standards "prescribes initial minimum safety requirements for railroad track" and shall be used for safety inspections only. They are not to be used for design purposes or as construction inspection criteria.

MIL-HDBK-1005/6

Section 2: ROADWAY

2.1 Width. Provide a minimum of 18 inches from the toe of the ballast to the edge of the finished grade. See AREA Manual, Chapter 1, Part 2, Design.

2.1.1 Cut Sections. Provide a minimum of 9 feet from track centerline to the shoulder line.

2.1.2 Fill Sections. Provide a minimum of 11 feet from track centerline to the shoulder line.

2.1.3 Minimum Cut Dimensions. Consideration is to be given to drainage, snow removal, debris removal, rock falls, and maintenance. See AREA Manual, Chapter 1, Part 1.2, Design.

2.2 Slopes and Subgrade. Slope and subgrade criteria are as follows. See AREA Manual, Chapter 1, Part 1, Roadbed.

2.2.1 Slope. Cut and fill slopes shall be designed according to a slope stability analysis unless adequate local experience has shown a particular slope to be stable.

2.2.2 Subgrade. For subgrade criteria, see AREA Manual, Chapter 1, Part 1, Section 1.2.5, Roadbed and NAVFAC DM-7.1 Soil Mechanics and DM-7.2 Foundations and Earth Structures. Subgrade cross slopes shall be 48 horizontal to 1 vertical. The subgrade shall slope in one direction beneath a single track and shall be crowned between tracks for multiple tracks. In no case shall the crown of the subgrade occur under the ties.

2.3 Geotextile Fabric. When the subgrade has a large amount of fines, a geotextile fabric should be used between the subgrade and the ballast. Geotextile fabrics should be man made and not biodegradable. Geotextile fabrics should be designed to provide tensile reinforcements, filtration and soil separation. Typical properties and standards specified should include:

Fabric Weight	
Thickness	ASTM D 1777
Grab Strength	ASTM D 1682
Elongation (Percentage)	ASTM D 1682
Puncture Strength	ASTM D 751
Burst Strength	ASTM D 3786
Trapezoid Tear Strength	ASTM D 2261 or ASTM D 2262

MIL-HDBK-1005/6

When a geotextile fabric is used, there should be a minimum of 12 inches of ballast between the bottom of the ties and the fabric.

2.4 Drainage. Water is a principal influence on soil stability in roadbed, subgrade, and slopes. Control of surface and subsurface water is one of the most important factors in railroad design. For design guidance, see AREA Manual, Chapter 1, Part 1, Section 1.2.4, Drainage; Part 3, Natural Waterways, Part 4, Culverts; NAVFAC MIL-HDBK-1005/2, Hydrology; and MIL-HDBK-1005/3, Drainage Systems.

2.5 Monuments. Right-of-way monuments should be reinforced concrete posts (or similar) 6 inches square, 4 feet long, and embedded 3 feet in the earth. The specification for monuments from the Department of Transportation in the state where the work is being done may be used where appropriate.

MIL-HDBK-1005/6

Section 3: BALLAST AND SUB-BALLAST

3.1 Economics. Select ballast and sub-ballast with due consideration of cost and availability.

3.2 Specifications and Applications. See AREA Manual, Chapter 1, Part 2, Ballast, for material specifications. The following materials are acceptable in order of quality as listed:

- a) Crushed stone.
- b) Crushed slag.
- c) Prepared gravel.
- d) Pit run gravel.
- e) Cinders or other local materials may be used temporarily or in an emergency.

3.3 Depth. The combined thickness of ballast and sub-ballast required for a given axle load and subgrade strength should be determined on basis of engineering calculation and experience. For main running tracks, provide a minimum of 12 inches of ballast under the ties and 6 inches of sub-ballast. For all other locations, provide a minimum of 8 inches of ballast under the ties and 6 inches of sub-ballast. The design strength of the subgrade shall not be exceeded by the traffic load. See AREA Manual, Chapter 1, paragraph 1.2.5.4, Ballast Thickness. When a geotextile fabric is used between ballast or sub-ballast and the subgrade, there should be a minimum of 12 inches of ballast between the bottom of the tie and the geotextile fabric.

3.4 Cross Section Dimensions. See AREA Manual, Chapter 1, Part 2, Ballast.

3.5 Shrinkage Allowance. See AREA Manual, Chapter 1, Part 2.2, Ballast. Use 12 to 15 percent Shrinkage Factor.

MIL-HDBK-1005/6

Section 4: TIES

4.1 Specifications and Applications. Ties may be of wood, concrete, or other material.

4.1.1 Wood Ties. All wood ties shall conform to Federal Specification MM-T-371, Ties, Railroads, Wood (Cross and Switch) and have protective treatment, conforming to Federal Specification TT-W-571, Wood Preservation: Treating Practices.

4.1.2 Concrete Ties. See AREA Manual, Chapter 10.

4.1.3 Ties of Other Materials. Consider other materials such as steel in place of wood or concrete ties when practicable.

4.2 Economic Service Life and Tests. See AREA Manual, Chapter 3, Part 3, Tie Tests and the Economics of Service Life.

4.3 Handling and Protection of Timber Ties. To prolong the life of protected ties, specify the following practices:

- a) Use steel tie plates under the rails.
- b) Treat all cut surfaces with preservative.
- c) Use care in handling with sharp-pointed tools to avoid damage.
- d) Fill empty spike or bolt holes by driving treated wooden plugs into the holes. See AREA Manual, Chapter 3, Part 1.7, Timber Cross Ties. For additional information, refer to AREA Manual, Chapter 3, Part 5, The Handling of Ties From the Tree into the Track.

4.4 Dimensions. Use the following dimensions:

4.4.1 Cross Ties. For running track, cross ties of 7 by 8 inches or 7 by 9 inches by 8 feet 6 inches long should be used. For yards and sidings, 6 by 8 inches by 8 feet 0 inches long may be used. See Federal Specification MM-T-371, Table I.

4.4.2 Timber Switch Ties. Should be the same cross section as adjacent cross ties. Each tie shall be of the length specified in AREA Portfolio of Trackwork Plans. See AREA Manual, Chapter 3, Part 2, Timber Switch Ties and Federal Specification MM-T-371.

4.4.3 Bridge or Trestle Ties. Shall conform in spacing and length to the bridge or trestle design. See AREA Manual, Chapter 7.

4.5 Tie Spacing. Use the following spacing:

MIL-HDBK-1005/6

4.5.1 Running Track. Use 24 ties per 39-foot rail.

4.5.2 Yards and Sidings. Use 20 ties per 39-foot rail.

4.5.3 Switches and Crossovers. For switches and crossovers, follow AREA Portfolio of Trackwork Plans.

MIL-HDBK-1005/6

Section 5: TRACK

5.1 Rail Specifications. Choose sections conforming to AREA recommended sections. Use 115 RE rail for new construction and major rehabilitation projects unless quantities of larger sizes are stockpiled. For minor replacement or repair work match existing size rail where adequate.

5.1.1 Material. Rails shall be manufactured to specifications for hydrogen eliminated standard rail steel as recommended in the AREA Manual, Chapter 4, Rail, Part 2, Specifications.

5.1.2 Rail Drilling. Rails shall be drilled according to AREA Manual, Chapter 4, Rail, Part 1, Design, Table 1, Recommended Rail Drillings, Bar Punchings and Track Bolts, for new construction and major rehabilitation projects. For minor replacement or repair work, match existing where adequate.

5.1.3 Curved Rail. Where conditions are such that curves of 20 degrees (288-foot radius) or more are absolutely necessary, rails should be pre-bent to the design radius prior to installation.

5.2 Gage. For straight track and curves up to 12 degrees (478-foot radius) use a gage of 4 feet 8-1/2 inches measured between the inside heads of rail 5/8 inch below the top of rail. For curves greater than 12 degrees (478-foot radius) widen gage 1/8 inch for each additional 2 degrees (except through turnouts) to a maximum allowable of 4 feet 9 inches. Gage tolerance should be minus 1/4 inch to plus 3/16 inch.

5.3 Spikes. Use 6-inch by 5/8-inch cut spikes conforming to specifications as recommended in the AREA Manual for track spikes, including 0.20 percent copper, soft-steel or high carbon, Chapter 5, Part 2.3, Spikes. The smaller 5-1/2-inch by 9/16-inch cut spike may be used in sidings where 6 by 8-inch cross ties are used.

5.3.1 Holes Bored for Spikes. For size, see AREA Manual, Chapter 3, Part 1.9, Timber Cross Ties.

5.3.2 Spike Quantities. Use two spikes per side per tie plate on tangent track and curved track with not more than 6 degrees of curvature (radius 955 feet or larger). On curved track with not more than 6 degrees of curvature that has some superelevation and heavy loads operating at slow speeds use three spikes per side per tie plate. Use three spikes per side per tie plate on curved track with more than 6 degrees of curvature (radius 955 feet or less). Use four spikes per side per tie plate where traffic, curvature, speed, and superelevation indicate a need, with care being taken to minimize "spike killing" of the tie (i.e., weakening of a tie where spike holes are too close together).

MIL-HDBK-1005/6

- 5.4 Tie Plates. Use tie plates conforming to specifications for hot-worked, high-carbon steel tie plates including 0.20 percent copper. For size and material, see AREA Manual, Chapter 5, Track, Part 1, Tie Plates.
- 5.5 Rail Joint Spacing. Rail joint spacing shall be provided to insure space for expansion of the rail as specified in AREA Manual, Chapter 5, Part 5, Track Maintenance.
- 5.6 Rail Joint Bar. Use high carbon-steel, head-free, head-eased sections as specified in AREA Manual, Chapter 4, Part 1, Design and Part 2, Specifications. For bar punching pattern and application, see AREA Manual, Chapter 4, Rail, Part 1, Design, Table 1, Recommended Rail Drillings, Bar Punchings and Track Bolts.
- 5.7 Bolts and Nuts For Rail Joint Bar. Use oval neck, heat-treated, carbon steel track bolts and carbon-steel nuts as specified in AREA Manual, Chapter 4, Part 1, Design and Part 2, Specifications. For bolt size and application, see AREA Manual, Chapter 4, Rail, Part 1, Design, Table 1, Recommended Rail Drillings, Bar Punchings and Track Bolts.
- 5.8 Spring Washers. Use washers conforming to specifications as recommended in the AREA Manual, Chapter 4, Part 2, Specifications for Spring Washers.
- 5.9 Rail Anchors. Use a one-piece anchor. Anchors shall be used on grades to restrain rail movement in the predominant direction of traffic and to resist temperature expansion. Anchors shall be applied in pairs on opposite rails so that they both bear against either the tie or tie plate. Anchors shall be uniformly distributed along the rail without application on joint ties. See AREA Manual, Chapter 5, Part 5, Track Maintenance. For light density lines, a minimum, of 8 rail anchors per 39 foot section is recommended per AREA Bulletin 709.
- 5.10 Rail Gage Rods. To prevent rail spread and overturning on curves over 10 degrees (574-foot radius) adjustable gage rods (for standard or widened gage) may be used. Gage rods shall not be used as a substitute for competent ties.
- 5.11 Rail Braces. Use braces on rails subject to overturning and, if required, on outside rails on curves of 16 degrees or more (359-foot radius or less).
- 5.12 Guardrails. Use guardrails as follows:
- a) Opposite the frog point for protection, except for selfguarded frogs.
 - b) Where derailment is likely.

MIL-HDBK-1005/6

c) Where derailment would be hazardous or costly, such as on steep embankments and bridges.

5.12.1 Gaging. For gaging, See AREA Portfolio of Trackwork Plans, Plan No. 791.

5.12.2 Material. Relay rail of the same size as the running rail may be used. Relay rail shall conform to the requirements of Military Specification MIL-R-3911, Rail, Tee, Railway, Relayer Rail.

5.13 Track Construction. Use specifications as recommended in the AREA Manual, Chapter 5, Part 4, Track Construction.

MIL-HDBK-1005/6

Section 6: RUNNING TRACK GRADE AND ALIGNMENT

6.1 Gradient. Track gradients are determined by the cost of construction versus the operating costs. Naval facility trackage is usually located in level terrain where gradient problems are non-existent or minimal. Maximum design gradients should not exceed 3 percent compensated. Steeper gradients, only up to 5 percent compensated, shall be approved by NAVFACENGCOM. If a connecting railroad is to operate over Naval facilities, discussions with the railroad should take place during the design phase regarding gradients. See AREA Manual, Chapter 16, Part 1.

6.2 Curves. The type and character of equipment that must negotiate the curves, available right of way, desired operating speed and traffic density shall be considered in determining track curvature. The chord definition for curves shall apply for railroad track.

6.2.1 Ruling Radii, Horizontal. For design of new tracks and for major track rehabilitation the maximum degree of curvature shall be 16 degrees (359-foot radius). If a tighter curve than 16 degrees (359-foot radius) is required because of space limitations, prior approval must be obtained from NAVFACENGCOM Headquarters. Larger radii, especially less than 10 degree curves (574-foot radius), are desirable and every reasonable effort shall be made to achieve such radii. A spiral curve is desirable between tangents and curves and between the different radii of compound curves on Class 3 or higher tracks. Spirals shall be according to AREA Manual, Spiral Curves, Chapter 5, Part 3. Curves should be designed in terms of degree of curvature, and should be whole degrees of curvature.

6.2.2 Reverse Curves. The minimum allowed tangent distance between reverse curves, including crossovers, shall be according to the AREA Manual, Chapter 5, Part 3, Reverse Curves. The desirable tangent distance between reverse curves in yards and terminals should be 100 feet or more.

6.2.3 Vertical Curves. The maximum rate of change should be 0.20 foot per 100 feet in sag curves and 0.40 foot per 100 feet on summit curves. For tracks of lesser importance, such as sidings, rates of change can be relatively large but not greater than practical considerations will permit.

6.3 Superelevation. Superelevation is generally not required on tracks used at low speeds, i.e., in yards and sidings. Where required, superelevation shall be computed per AREA Manual, Chapter 5, Part 3, Elevations and Speeds for Curves. See AREA Manual, Chapter 5, Table 1 for equilibrium elevations. An unbalanced elevation of 3 inches is recommended on railroads where trains will operate at different speeds. Railroad track shall not be superelevated where common with crane track.

6.4 Track Centerline Spacing. Between parallel running tracks, 14 feet shall be provided.

MIL-HDBK-1005/6

6.5 Clearances. Clearance (horizontal and vertical) shall be in accordance with Plates B, B-1, C, C-1, D, E, and F in AAR Supplement to Manual of Standards and Recommended Practices, which is reproduced in the National Railway Publication Railway Line Clearances. Clearance of fixed obstructions shall be in accordance with AREA Manual, Chapter 28.

MIL-HDBK-1005/6

Section 7: TURNOUTS AND CROSSOVERS

7.1 Turnouts. The geometry of the turnout is governed by the size of the frog. Where commercially owned and operated switching equipment is used, turnouts shall meet the minimum requirements of the connecting railroad. Where Navy owned and operated switching equipment is used, No. 8 frogs should be used. If a smaller than a No. 8 frog is required because of space limitations, No. 7, No. 6, or No. 5 frogs may be used with caution. Spring rail frogs shall not be used.

7.2 Connecting Curves. Connecting curves shall have radii greater than the lead curve.

7.3 Crossovers. Criteria for crossovers are given below.

a) Description. Crossovers consist of two turnouts from adjacent tracks, connected by a tangent or by reversed curves with a tangent between, placed between the ends of the frogs.

b) Reverse Curves. Consider reverse curves only because of space limitations.

7.4 Turnout Location. No part of the turnout shall be located on a vertical curve.

MIL-HDBK-1005/6

Section 8: HIGHWAY GRADE CROSSING

8.1 Width of Crossing. Crossing widths shall be 4 feet wider on each side than adjacent roadway surface measured at right angles to the highway or as prescribed by local law.

8.2 Profile of Crossings. The surface of the highway shall be in the same plane as the top of the rails for a distance of 2 feet outside of the rails. The top of the rail plane shall be connected with the gradeline of the highway, each way, by vertical curves which satisfy highway requirements for riding conditions and sight distances.

8.3 Materials for Crossing. Materials used are as follows: See AREA Manual, Chapter 9, Part 1, Guidelines for the Construction or Reconstruction of Highway - Railway Crossings.

8.3.1 Heavily Traveled Roads. Prefabricated rubber, precast concrete, prefabricated treated timber, or sectional treated timber shall be used. Welded rails should be used through the crossing.

8.3.2 Lightly Traveled Roads. Treated wood plank or bituminous pavement shall be used.

8.4 Sign, Signals, Automatic Crossing Gates, and Floodlighting. See U.S. Department of Transportation, Federal Highway Administration, D6.1 Manual on Uniform Traffic Control Devices, Part VIII, "Grade Crossings".

MIL-HDBK-1005/6

Section 9: TRACKAGE IN PAVEMENT

9.1 Highway Grade Crossing. See Section 8.

9.2 Specifications. Trackage in pavement shall be avoided where practicable. Where unavoidable it should be built as follows: for light to medium traffic conditions the track can be in flexible pavement (ballast, timber ties, and bituminous pavement); and for heavier applications rails set in a rigid pavement should be used. New 115 RE or heavier rails shall be used in all pavement installations. Welded rails should be used through heavily used crossings.

9.2.1 Bituminous Pavement. Provide 7 by 9 inches by 8 feet 6 inch creosoted cross ties on 19 1/2-inch centers. Provide a minimum of 12 inches of well compacted ballast below the ties and in the tie cribs (space between the ties). Care shall be taken to maintain uniform bearing throughout the length of each tie. The bituminous paving material shall be applied in multiple layers with a 2 1/2 to 3-inch wide by 2-inch minimum deep flangeway formed on the gage side of each rail.

9.2.2 Concrete Pavement. For new construction or major rehabilitation track constructed in concrete pavement should be built according to the details in Figure 1, Railroad Track Support. Flangeways shall be 2 1/2 to 3-inch wide by 2-inch minimum deep on the gage side of each rail. A gage rod may be substituted for the 3/4-inch diameter tie rod shown in Figure 1. See NAVFAC MIL-HDBK-1025/1, Piers and Wharves for additional information.

9.3 Turnouts. Switches or frogs should not be installed in paved areas. Where unavoidable, use tongue and mate switches as per AREA Portfolio of Trackwork Plans.

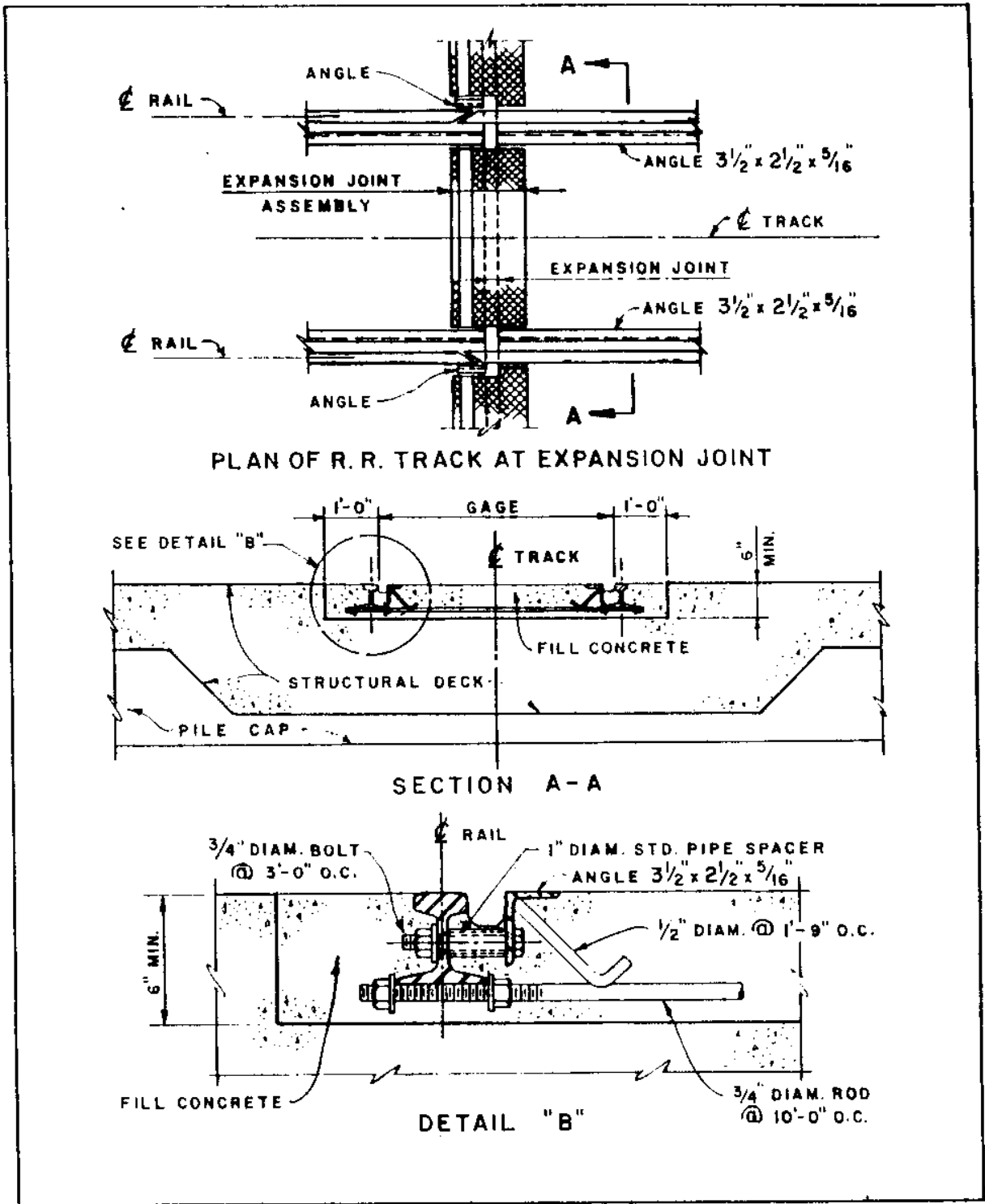


Figure 1
Railroad Track Support

MIL-HDBK-1005/6

Section 10: SIDINGS

10.1 Track Centerline Spacing. Between parallel siding tracks 14 feet shall be provided. Between parallel and mainline tracks 15 feet shall be provided.

10.2 Minimum Tangent Distance. The minimum allowed tangent distance between reverse curves, including crossovers, shall be according to the AREA Manual, Chapter 5, Part 3, Reverse Curves. The desirable tangent distance between reverse curves in yards and terminals should be 100 feet or more.

10.3 Gradients. Level or non-rolling gradients are most desirable. If necessary, a maximum of up to 1.5 percent may be used.

10.4 Track Ends. Track ends shall be provided with stops or bumpers as follows, based on cost and traffic density:

- a) Commercially available fabricated stops.
- b) A timber fastened across the rails.

MIL-HDBK-1005/6

Section 11: WAREHOUSE TRACKAGE

11.1 Gradient Apportionment. The gradient shall be apportioned to make certain that:

a) The maximum gradient along warehouse loading platforms shall be 1 percent.

b) The maximum gradient along tracks between individual warehouses shall be 3 percent for short distances.

c) Crossovers shall not be located on the 3 percent gradient where long trains of cars will be pushed upgrade through the crossovers.

11.2 Horizontal and Vertical Clearances. For clearances to fixed obstructions such as walls, doorways, and platforms, see Section 6, paragraph 6.5 of this handbook and local servicing railroad.

11.3 Warehouse Railroad Layout. For warehouse railroad layout, see Definitive Designs for Naval Shore Facilities, NAVFAC P-272.

MIL-HDBK-1005/6

Section 12: TRACK SCALES

12.1 Scales. There are two types of scales available for weighing cars, static and weight-in-motion. See AAR Scale Handbook.

12.1.1 Static Scale. One car at a time is rolled onto the scale, stopped, and weighed. The scale usually is a beam balance type, but can be a load cell type.

12.1.2 Weigh-in-Motion Scale. This scale weighs cars coupled together while being pulled over the scale by a locomotive at slow speed. The scale is a load cell type.

12.2 Selection. If a scale is necessary, a static scale would probably meet Navy needs. Weigh-in-motion scales are sophisticated devices used where large numbers of cars are to be weighed each day.

12.3 Location. Scales shall be located to minimize switching.

12.4 Alignment. A minimum of 100 feet of tangent tracks shall be provided on scale approaches. Gradients should be less than 0.05 percent over a static scale. Weigh-in-motion scales tracks should be level or slightly upgrade allowing the train to be stretched during weighing.

12.5 Dead Rails. Where a by-pass track cannot be built around the scale, use dead rails to gauntlet equipment not to be weighed over the scale.

MIL-HDBK-1005/6

Section 13: YARDS

13.1 Scope. Yards are places for the storage and sorting of railroad cars. A freight terminal can also be a railroad yard. Larger yards usually include car and locomotive service and maintenance facilities. Background data for design and layout of yards can be found in the AREA Manual, Chapter 14, Yards and Terminals, and shall be used as a guide for new construction and major rehabilitation.

13.2 General Considerations. Features of a more general nature are discussed as follows:

13.2.1 Fire Protection. Hydrants with hose houses shall be located to comply with applicable codes and regulations. Chemical extinguishing systems shall be installed where appropriate to protect against oil and electric fires. For additional requirements see NAVFAC MIL-HDBK-1008, Fire Protection for Facilities Engineering, Design and Construction.

13.2.2 Theft and Vandalism. Protective measures shall be carefully considered in the design of yards.

13.2.3 Efficiency. Yards shall be designed for efficient switching and handling tasks and to minimize delays and demurrage charges.

13.2.4 Expansion. Yard layouts shall provide for anticipated future expansion so that the number and length of tracks in them may be increased as required with minimum interference to operation or minimum relocation of existing trackage.

13.2.5 Track Capacity. In computing track capacity in terms of number of cars, a minimum of 50 feet per car shall be used for all tracks other than those to be used for special equipment.

13.2.6 Yard Lighting. Where necessary lighting should be installed following the recommendations of the AREA Manual, Chapter 33, Part 10, Illumination.

13.2.7 Drainage. An adequate drainage system is essential and shall be installed so that it can be easily cleaned and maintained. See NAVFAC MIL-HDBK-1005/3, Drainage Systems.

13.2.8 Communications. Facilities such as teletype, pneumatic tube systems, loud speakers, talkback, paging systems, television, telephones, and radios shall be considered to expedite operations. See NAVFAC MIL-HDBK-1004/7, Wire Communications and Signal Systems.

13.3 Track Arrangements. Main tracks should not pass through a yard, but should be connected to yard tracks as directly as practicable. Crossovers to facilitate all normal and regular movement in the yard, with minimum interference between the different movements, shall be provided.

13.3.1 Body Tracks. A series of parallel tracks which could be part of a storage, repair, receiving, classification, or departure yard shall have a minimum of 14 feet between centers. Where a body track parallels a main or important running track, a minimum of 20 feet between centers shall be provided, subject to state regulations on clearances. See AREA Manual, Chapter 28, Part 3, Section 3.6, Legal Clearance Requirements by States.

MIL-HDBK-1005/6

13.3.2 Ladder Tracks. At one or both ends of the body tracks, there is a diagonal track which is called the ladder track which connects the body tracks to a main or running track. The angle the ladder track makes with the body track should equal the frog angle. Where space is a problem, tandem ladder tracks, with angles twice or triple the frog angle, should be used. Ladder tracks shall have a minimum of 15 feet between centers from other tracks. Parallel ladder tracks shall have a minimum of 20 feet between centers.

13.4 Gradients. Wherever practicable, gradients should be level on tracks used for standing of cars. Maximum yard gradients shall not exceed 1.5 percent without prior approval of NAVFACENCOM.

13.5 Reverse Curves. The minimum allowed tangent distance between reverse curves, including crossovers, shall be according to the AREA Manual, Chapter 5, Part 3, Reverse Curves. The desirable tangent distance between reverse curves in yards and terminals should be 100 feet or more.

MIL-HDBK-1005/6

Section 14: RAILROAD BRIDGES AND TRESTLES

14.1 Design. A request for permission to construct bridges over navigable waters shall be forwarded to NAVFACENGCOM Headquarters for endorsement to the Coast Guard, U.S. Department of Transportation. Use AREA Manual, Chapters 7, 8, and 15 respectively for design of Timber Structures, Concrete Structures and Foundations, and Steel Structures.

MIL-HDBK-1005/6

CHAPTER 2. WIDE GAGE PORTAL CRANE TRACKAGE

Section 1: CRITERIA AND TYPES

1.1 Scope. This chapter presents design criteria and standards for trackage for different types of wide gage portal cranes. Particular reference is made to rails, rail supports, turnouts, crossings, alignment, components, curves of all types, and design procedures. The criteria herein cover design of both new trackage and rehabilitation alignments. NAVFACENGCOM Headquarters has a computer program TRACKS, Application Manual for Portal Crane Track Design, available for new track design analysis and rehabilitation design and analysis.

1.2 Additional Criteria. A list of criteria documents related to Civil Engineering is presented in the front of this handbook. See MIL-HDBK-1025/1, Piers and Wharves for criteria on rail supports (deck fittings), wheel loads, and trackage location and arrangement on waterfront structures (deck structure design). See DM-38.01, Weight Handling Equipment for design details for weight and line handling equipment. All documents referenced in this handbook are listed in the References section located at the end of this handbook. Unless specially stated otherwise, use the current editions of all referenced documents.

1.3 Policy. Portal crane trackage should be separate from railroad trackage, except as stated in Chapter 1 of this handbook, and in NAVFAC MIL-HDBK-1025/1, Piers and Wharves.

1.4 Types of Portal Crane Trackage. There are two types of portal crane trackage systems in use in the Naval Shore Establishment.

1.4.1 Two-Rail System. The cranes for this system are equipped with double-flanged wheels. This is the preferred track system.

1.4.2 Four-Rail System. This system consists of two standard (RR) gage tracks. The cranes for this system are equipped with single-flanged wheels. This system is the most expensive and interferes with railroad service.

MIL-HDBK-1005/6

Section 2: TRACKAGE COMPONENTS

2.1 Rails. The rail section for new track and for extensive rail replacement projects shall conform to 135-pound CR (crane rail) control-cooled standard. For locations and arrangements of portal crane trackage and rail supports, see sources under Additional Criteria above. Use welded joints whenever possible.

2.2 Turnouts and Crossings. A turnout is an arrangement of switch points and frog, which divert the crane from one track to another. Special track fittings, such as switch points and frogs, are required for the wide-gage systems which use double-flanged wheels. These fittings must provide double flangeways for crane wheels, where crane rails diverge or intersect. In addition, special fittings are needed where wide and standard gage trackage intersect or where wide and standard gages are accommodated on three rails, with one rail shared by both gages. Where both cranes and railroad cars utilize a common rail (three-rail system), the other railroad rail should be placed between the crane rails. Standard fittings shall be used on all new and replacement construction and only on level grade.

2.2.1 Switches (Two-Rail System).

2.2.1.1 Switches. Special switches are required in a crane track turnout for double-flanged crane wheels. The double-tongue switchpoint consists of two rail heads on each tongue. A flangeway is therefore provided on both the gage side and field side of the running rails.

2.2.1.2 Material. Either cast or fabricated designs may be used.

a) Cast. See NAVFAC Standard Drawings Nos. 1403326-27.

b) Fabricated. See NAVFAC Standard Drawings Nos. 1404035-37.

2.2.1.3 Wheel Loads. See "Wheel Loads for Locomotive and Portal Cranes" in NAVFAC MIL-HDBK-1025/1, Piers and Wharves. Minimum criteria: 100 kip vertical, 15 kip lateral, on 3 foot 6 inch centers.

2.2.2 Frogs (Two-Rail Track System).

2.2.2.1 Rigid Frogs. The use of rigid frogs is permissible only in cases where the actual frog angle is greater than that shown in Figure 2 for the actual crane rail radius. They shall be designed for double-flanged wheels.

2.2.2.2 Turnable Frogs. This type of frog is preferable for all locations, and its use is mandatory in locations as indicated by Figure 2.

2.2.2.3 Materials. Either cast or fabricated designs may be used.

MIL-HDBK-1005/6

- a) Cast Turntable Frogs. See NAVFAC Standard Drawing Nos. 1294420-22.
- b) Fabricated Rigid Frogs. See NAVFAC Standard Drawings Nos. 1404038-39.
- c) Fabricated Turntable Frogs . See NAVFAC Standard Drawings Nos. 1404040-41.

2.2.2.4. Wheel Loads. See "Wheel Loads for Locomotive and Portal Cranes" in NAVFAC MIL-HDBK-1025/1, Piers and Wharves. Minimum criteria: 100 kip vertical, 15 kip lateral, on 3 foot 6 inch centers.

2.2.3 Frogs (Four-Rail Track System).

2.2.3.1 Rigid Frogs. Design for single flanged wheels.

2.2.3.2 Material. Use only cast manganese steel.

2.2.3.3 Wheel Loads. When actual wheel loading is unknown, see "Wheel Loads for Locomotive and Portal Cranes" in NAVFAC MIL-HDBK-1025/1, Piers and Wharves.

2.2.4 Standard Gage Fittings. Several fitting types commonly used for standard gage trackwork also have application for crane trackage in three-rail systems. These include tongue-and-mate switches, guarded split switches, and standard railroad type frogs.

2.2.4.1 Tongue and Mate Switches. These fittings are commonly used for railroad turnouts in paved areas. In three-rail systems where standard gage and wide gage share a common rail, and the standard gage diverges from a wide gage, a mate may be used. The mate allows the single-flanged wheels to divert from the crane rail without interfering with crane double-flanged wheels.

2.2.4.2 Guarded Split Switch. In cases where a tongue-and-mate switch can be used in a three-rail system, a guarded split switch is also applicable as an alternative. A guarded split switchpoint on the crane rail allows passage of crane wheels along the stock crane rail when in the open position. When closed, the switchpoint provides a continuous rail head for single-flanged wheels diverging from the crane rail. Where a standard gage turnout requires single flange wheels to cross the crane rail at the switchpoint, a double-tongue switch must be used.

2.2.4.3 Railroad Type Frogs. These are not for use with crane rails, but may be used in three-rail systems where both intersecting rails are used by single-flanged wheels. Self-guarded frogs in paved areas are not desirable; guard rails are therefore required.

2.2.5 Manual Calculations (Two-Rail Switch).

2.2.5.1 Flangeway Spacing Computation. For each integer X, sum the corresponding circular and linear offsets as given below. Subtract the railhead width to obtain the flangeway spacing. Switch length and the end spacing -b can be varied as required. See Figure 3.

2.2.5.2 Circle Offset Computation.

Variable Definitions:

MIL-HDBK-1005/6

δ = Circular offset from tangent

X = X coordinate of position, measured from entry end of switch

R = Radius of curvature

θ = Central angle of arc

$$\theta = \sin^{-1} \frac{X}{R}$$

$$\delta = R - R(\cos \theta)$$

2.2.5.3 Linear Offset Computation.

Variable Definitions:

b = Desired distance between rail centerlines at entry end of tongue.

Y = Vertical offset

$$Y = ax + b$$

$$\text{At } X = 0, Y = b$$

$$\text{At } X = L, Y = 0$$

Solve for constant $-a$ compute each required offset $-Y$.

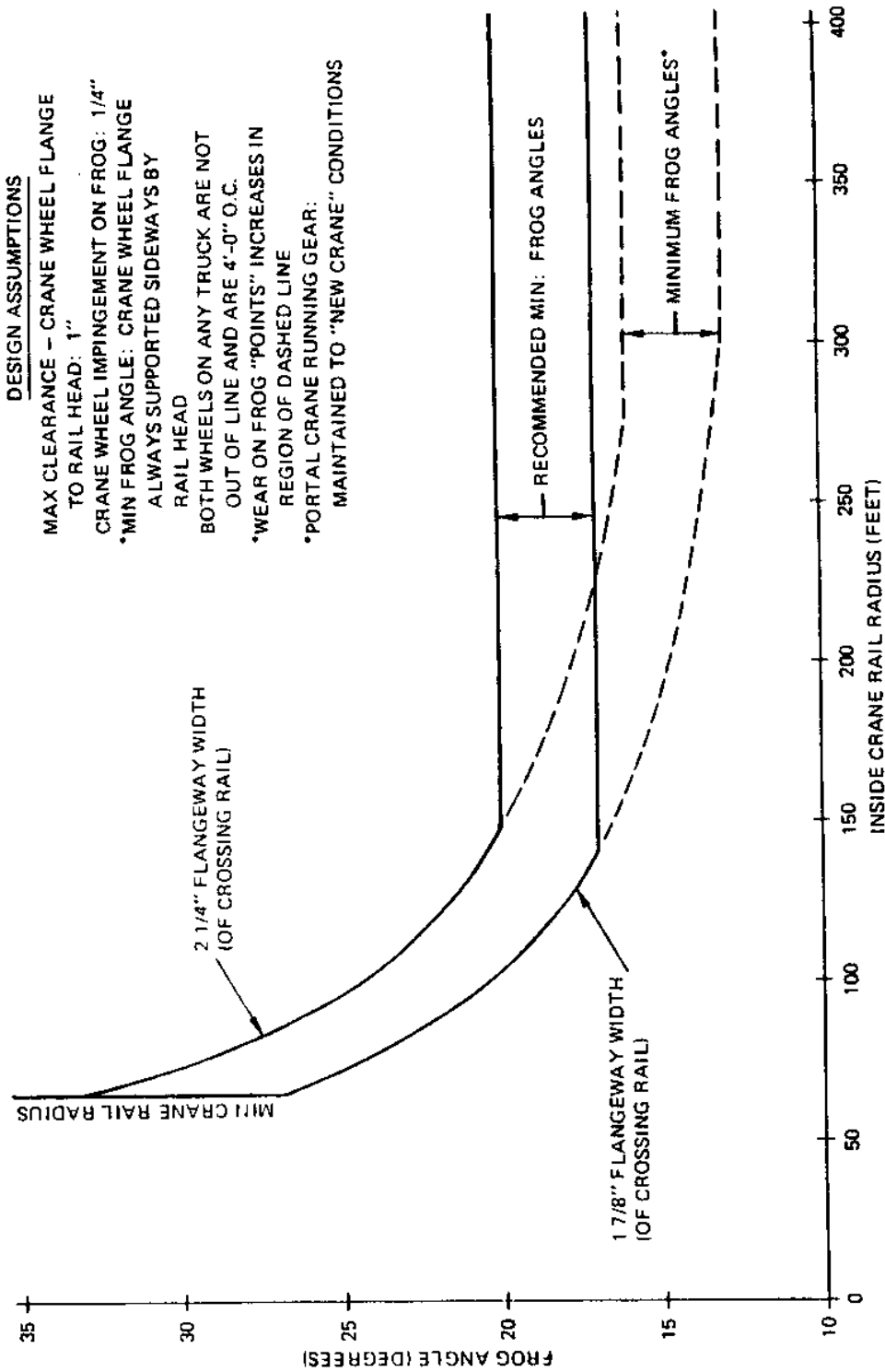


Figure 2
Minimum Rigid Frog Angle-Portal Crane Rails

FIGURE 2
Minimum Rigid Frog Angle—Portal Crane Rails

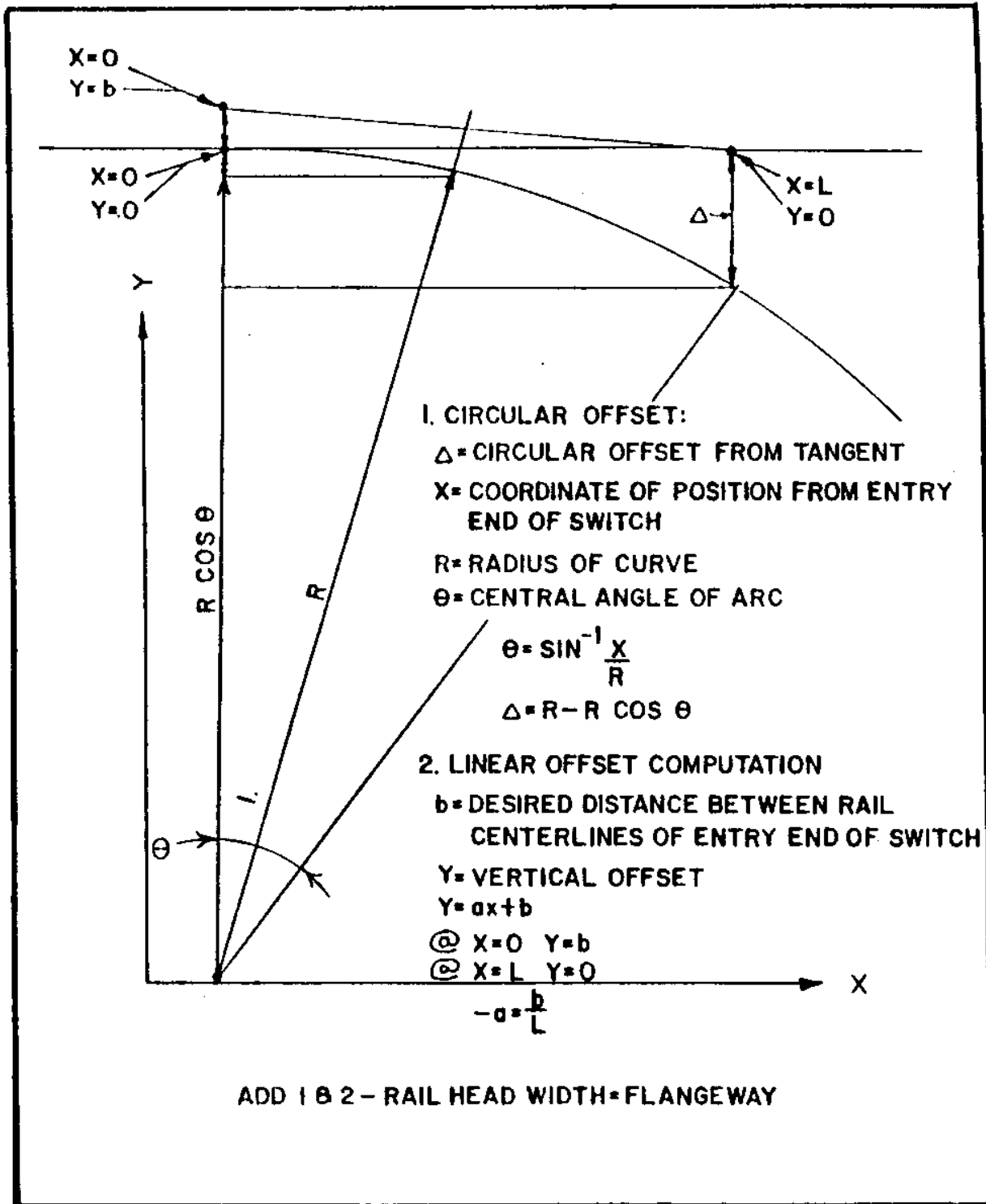


Figure 3
 Flangeway Width Calculation

MIL-HDBK-1005/6

Section 3: PORTAL CRANE TRACK CURVE ALIGNMENT

3.1 Applications. Apply design procedure outlined in this section to:

- a) All new curved portal crane track projects.
- b) Curved extensions to existing crane trackage.
- c) Rehabilitation projects where new track foundations are required throughout a curve.

Rehabilitation design for curved trackage on existing foundations will have different methods of calculation than are outlined in this section. Some of the criteria specified for new track cannot be applied to rehabilitation projects because of the need to fit the track on the existing foundation while meeting gage reduction requirements; however, wherever possible, the definitions and objectives of this section should be utilized for replacement design. Criteria for rehabilitation design of curved track on existing foundations are specified in Section 4 of this Chapter.

3.1.1 Problem Description. The track gage must be reduced on curves because of the nonradial position of the ends of the crane (See Figure 4). Some form of transition is required between the tangent track and the short-radius curved track.

(Note: A computer program TRACKS, (available from NAVFACENCOM Headquarters) can be used to calculate the gage reduction. The program requires the crane float, curve radius and gage.)

3.2 Reduced Gage. Actual gage reduction for a given radius may be computed precisely, but as the crane frame covers or "straddles" a number of radii in traversing the transition curve, the gradual reduction between the tangent gage and the gage at the end of the transition curve is an approximation. The shorter the radius the greater the gage reduction required. Gage reduction on curves with a radius greater than 300 feet is normally not required, as it is well within the float capability of most cranes.

3.3 Crane Equivalent Length. Equivalent length is the length of a theoretical crane that has its corners riding over the centerline of the rails when all the wheels of the actual crane are on the rails of the curve. See Figures 4 and 5

3.4 Lateral Float. Lateral float is the amount of transverse movement possible on the gudgeon pins of the crane (See Figure 6). No transition from tangent to curve or vice versa has been designed to eliminate the necessity for providing some lateral floating action in cranes.

3.4.1 Radius. The floating action (transverse movement) provided in cranes permits a crane to traverse a large radius curve without any gage

MIL-HDBK-1005/6

reduction. Normally the float capability of a crane is such that a curve of 300 feet radius can be traversed with a safety factor greater than two and without a gage reduction.

3.4.2 Minimum Radius. It is desirable that the radius of the central portion of the curve be not less than 80 feet, except where extreme space limitations force this condition.

3.4.3 Float for New Cranes. Prior to purchase of new cranes, the existing track system is to be investigated to determine the gage to which the crane must be built and the amount of lateral float required in the crane.

3.4.4 Transferring from One Track System to Another. When cranes are transferred from one track system to another, float requirements must be determined and the running gear reconstructed as required to fit the new track system.

3.5 Transition Curve (Inside or Control Curve). This transition curve is a series of compounding circular arcs, in which change of degree of curve is uniform and directly proportional to the flexible curve length. The first 20 feet of curvature of all transition curves is identical.

3.5.1 Gage Reduction. Although the actual reduction for a given radius may be computed precisely, the gradual reduction between tangent gage and reduced gage is an approximation.

3.6 Switch Curve (Inside or Control Curve). The first 20 feet of the transition curve, which is the switch curve, is an arc of constant radius of 300 feet. All switch curves, being identical, permit the standard switch to be inserted at the point of tangency of any curve design in accordance with these criteria, at any time (See Figure 7).

3.6.1 Switch Alignment. Although the body of the switch may project a few inches beyond the sharp edge of the switch curve, the switch alignment will match precisely any designed flexible transition. Switching from curved track shall not be used unless the radius of the curve is greater than 300 feet and the turnout is to the outside of the curve, that is, not the center of the curve.

3.7 Main Circular Curve (Inner). This curve is an arc of constant radius located between the beginning and ending transition curves (See Figure 7).

3.7.1 General Requirement. The general practice is to make an arbitrary choice of R_{min} , assuming R_{min} and R_c to be approximately equal. The curve which results from this choice of R_{min} must fit available space and other field conditions, and must not cause the available float of any crane using the track to be exceeded. Upon satisfying these conditions, R_c should normally be in the range:

MIL-HDBK-1005/6

$$R_c = R_{\min} \pm 3.00 \text{ ft.}$$

Unless extreme space limitations dictate otherwise, it is desirable that neither R_{\min} nor R_c be less than 80 feet.

3.7.2 Selection of Radius. The following are suggested methods for selecting R_{\min} and R_c for use in the design procedure, Table 1.

a) For a symmetrical curve with $\theta = 180^\circ$ (i.e. parallel tangents forming a "horse-shoe" curve), a first approximation of R_{\min} should be:

$$R_{\min} = 0.93M$$

The radius of the main circular curve is:

$$R_c = \frac{M - Y_c}{\cos \frac{\theta}{2}}$$

b) For $90^\circ \leq \theta < 180^\circ$, a recommended first approximation of R_{\min} would be a value equal to one half the distance from PC to PT.

Note: The choice of R_{\min} in this case is strictly an approximation. A certain amount of trial and error is involved in the final choice of R_{\min} .

c) For $\theta < 90^\circ$, it is recommended that the first trial should be based upon historical data of a similar curve if available. Otherwise, estimate and refine by trial and error.

θ , M , Y_c and $\frac{\theta}{2}$ = (See Table 4).

3.8 Complete Curve Combination. A complete curve combination consists of a minimum of two switch curves and two abutting transition curves, or a maximum of two switch curves and two transition curves, separated by one main circular curve (See Figure 7).

3.8.1 Transition Curve. When the main intersection angle (θ) is 90 degrees or less, the curve may be made transitional throughout. When the curves are transitional throughout, the inner transition curves abut, but the outer transition curves are separated by a tangent of $2t$ length.

3.8.2 Tangent Length. Tangent length between curves of opposite direction shall be at least equal to the equivalent length of the crane.

3.9 Reverse Curve. Under no circumstances shall the commonly called "reverse curve" be used.

3.10 Transition Curve (Outside). This curve is a series of compounding circular arcs which are not concentric with the corresponding arcs of the inside transition curve. The first 20 feet of curvature of all transition

MIL-HDBK-1005/6

curves shall be identical to permit the use of one switch design for all turn outs. The curve components are as follows:

3.10.1 Central Angle. The series of compound arcs comprising the outer flexible transition curve have the same central angle as the corresponding arc of the inside transition curve (See Figure 8 and 9).

3.10.2 Radii. The radii of the arcs of this transition are obtained by adding G_s to the radii of the inner flexible transition curve.

3.10.3 Gage Reduction. The required gage reduction through the flexible transition curve is obtained by shifting the outer curve back of the S.C.T. along tangent t_s a distance d (See Figure 7).

3.10.4 Alignment Closure. A short tangent distance t_1 is then introduced between the end of the switch curve and the beginning of the outer flexible transition curve (See Figures 7 and 9). A short tangent distance is also introduced between the end of the flexible transition curve and the main circular curve (See Figures 7 and 9).

3.11 Switch Curve (Outside). The outer switch curve, which is the first 20 feet of the transition curve, is an arc of constant radius of 300 feet. This switch curve is identical with that used for the first 20 feet of curvature on the inner alignment, permitting the standard switch to be inserted at the point of tangency of any curve at any time.

3.11.1 Location. The point of beginning of the outer switch (fixed) curve is precisely located laterally opposite the point of beginning of the inner switch curve.

3.11.2 Convergence. The outer and inner switch curves being identical results in the outer curve converging on the inner curve. This convergence closely approximates the required gage reduction, so that a negligible amount of misalignment is introduced.

3.11.3 Lead. The inner and outer switch curves are not concentric. Therefore, a point radially opposite the forward end of the inner switch is ahead of the forward end of the outer switch curve. This distance is called the lead.

3.12 Main Circular Curve (Outside). This curve is an arc of constant radius which is concentric with the corresponding inside main circular curve.

3.12.1 Central Angle. The outside main circular curve has the same central angle as the inside main circular curve.

3.12.2 Radius. The radius of this curve is obtained by adding G_{min} to the radius of the inside main circular curve (See Figure 7).

3.12.3 Gage Reduction. The gage on this curve is constant and equal to G_{min} .

MIL-HDBK-1005/6

3.13 Design Procedure. See Table 1 for procedures.

3.14 Sample Curve Computation. See Table 2 for example.

3.15 Tabulation of Sample Curve Computation. See Table 3 for tabulation.

3.16 Drydock Head-End. The following considerations are essential to design:

a) Access connections shall not be made to a continuous circular curve connecting both sides of a drydock. In extreme cases where such connections are absolutely necessary, prior NAVFACENGCOM approval shall be obtained.

b) The head-end curve is a special case of a complete curve combination (see paragraph 3.8, preceding, for description) in which a curve having a 180-degree central angle is required to connect two parallel tangent tracks.

c) Where feasible, the design shall be such that the curve combination is symmetrical about a line equidistant between the parallel tangent tracks.

3.17 Vertical Alignment. The following considerations are essential to design:

a) Design horizontal curves for level grade in order to minimize the possibility of derailment, with the attendant danger of overturning.

b) If there is an absolute necessity to use other than a level grade for a horizontal curve, approval must be obtained from NAVFACENGCOM Headquarters.

c) Limited grades (maximum 1 percent) and vertical curves, shall be placed on tangent track only when it is necessary to connect parts of a track system constructed at different elevations.

d) Nonlevel grade shall be a minimum distance of the crane length (centerline to centerline of end wheels) from the commencement of any crossing, horizontal curve, or turnout.

e) When nonlevel grade is permitted by NAVFACENGCOM Headquarters, use the formulas and procedure of the example in paragraph 3.17.1, following, in determining vertical alignment.

MIL-HDBK-1005/6

3.17.1 Example of Vertical Alignment. A horizontally curved track shall be placed on level grade. Derailment, with attendant danger of overturning, is probable because of the following conditions.

a) Points on the rails directly under the corners of the crane traversing the curved track would be at different elevations and not in the same plane. Because the frame and legs are a rigid structure, the sills and girders cannot appreciably conform to other than a plane surface.

b) In understanding the geometry of this problem, consider the crane as simply a rigid rectangular frame. The higher inside corner and the lower outside corner of this frame (always diagonally opposite) will remain on the rails at all times. Of the other two corners, the one nearer the center of gravity will be forced to the rail, thus suspending the fourth corner (diagonally opposite) above the rail by twice the amount of the difference in elevation at points on the rails under laterally opposite corners.

c) An identical suspension occurs at the corresponding point on the sill of the actual crane traversing such track. The suspension of one truck above the rail will be the amount of suspension at the sill multiplied by N' where:

$$N' = \frac{\text{total number of pivot points (at one corner)} + 1}{2} \quad (1)$$

$$N' = \frac{\text{total number of wheels of crane}}{8} \quad (2)$$

3.17.2 Application. The following hypothetical case illustrates the application of this procedure. From A of Figure 10:

$$\$ = \text{arc sin } \frac{18.8716}{100.00} \quad (3)$$

$$\$ = 10 \text{ deg } 52 \text{ min } 40 \text{ sec}$$

$$N = \text{arc sin } \frac{18.8716}{120.00} \quad (4)$$

$$N = 9 \text{ deg } 02 \text{ min } 53 \text{ sec}$$

$$)_2 = \$ - N = 1 \text{ deg } 49 \text{ min } 47 \text{ sec} \quad (5)$$

$$\text{Arc cb and arc ha} = (100.00)(\text{radian } 1 \text{ deg } 49 \text{ min } 47 \text{ sec}) \\ = 3.193 \text{ ft.} \quad (6)$$

$$)_1 = 2N = 18 \text{ deg } 05 \text{ min } 46 \text{ sec} \quad (7)$$

$$\text{Arc bh} = (100.00)(\text{radian } 18 \text{ deg } 05 \text{ min } 46 \text{ sec}) \\ = 31.584 \text{ ft.} \quad (8)$$

MIL-HDBK-1005/6

3.17.3 Suspension. The crane track is laid level, laterally. Therefore the difference of elevation between points c and b, or h and a, is 3.193 feet multiplied by 1.00 percent, which is equal to the difference between points c and e or a and f. See A of Figure 10 for the elevations of these points. Frame corner "a" is suspended 0.0319 feet multiplied by 2, and the sill at point A of Elevation in Figure 10 is suspended an identical amount, or 0.0638 feet. The suspension at point B, a pivot point, equals the suspension at point A. The truck intermediate equalizers, in all probability, are not exactly balanced; therefore, assume point D descends and point C rises.

3.17.4 Vertical Position. The vertical position of point C is now 0.1277 feet above normal; it follows that point E is the same amount above normal. The drive truck assembly No. 2 being heavier than the idler truck assembly No. 2, will cause point F to rise 0.1277 feet above point E. Point F will now be 0.2554 (3 1/16 inches) feet above point G, the normal position. The flange is 1-1/8 inches in depth, which leaves a clearance (3-1/16 - 1-1/8) = 1-15/16 inches (0.1615 feet) between the top of the rail and the flange on each wheel of idler truck assembly No. 2, assuming that the idler truck assembly remains balanced because of friction. This clearance will permit the truck assembly to swivel and cause derailment. Distance (S) of the wheels of one truck assembly above the rail is determined by:

$$S = R \left[\text{radian} \left(\arcsin \frac{f}{R} - \arcsin \frac{f}{R_1} \right) \right] (g) \left[\frac{w}{4} \right] \quad (9)$$

in which g is the rate of grade on the inside rail, and w is the total number of wheels.

Given: R = 100

$R_1 = 120$

f = 18.87

g = 1.00%

w = 32 (from equation 9)

S = 100 (Radian 1 deg 49 min 47 sec) (0.01) (8)

= 0.2554 or 3-1/16 inch

3.17.5 Balance. If the wheels or idler truck assembly No. 2 do not remain balanced, which is the most likely condition, the distance (S) which one wheel, or pair of wheels, will be above the rail is twice the amount shown by equation (9) and the formula for the worst, most likely condition will be:

MIL-HDBK-1005/6

$$S = 2R \left[\text{radian} \left(\arcsin \frac{f}{R} - \arcsin \frac{f}{R_1} \right) \right] (g) \left[\frac{W}{4} \right] \quad (10)$$

3.18 Symbols and Nomenclature. In the calculation of portal crane track alignment, there are many special symbols used; for a list of these symbols, see Table 4.

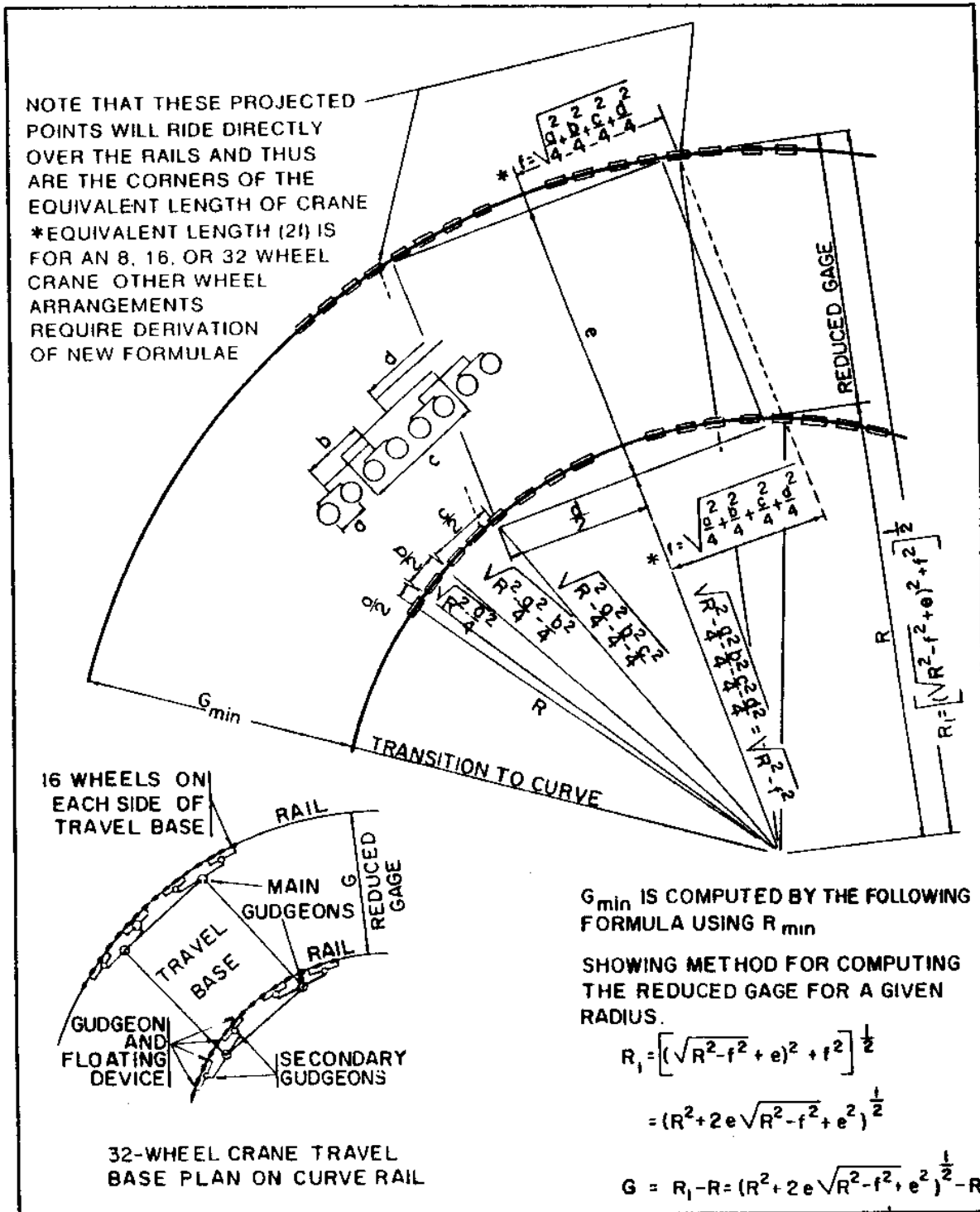


Figure 4
Gage Reduction Diagram (32-Wheel Crane)

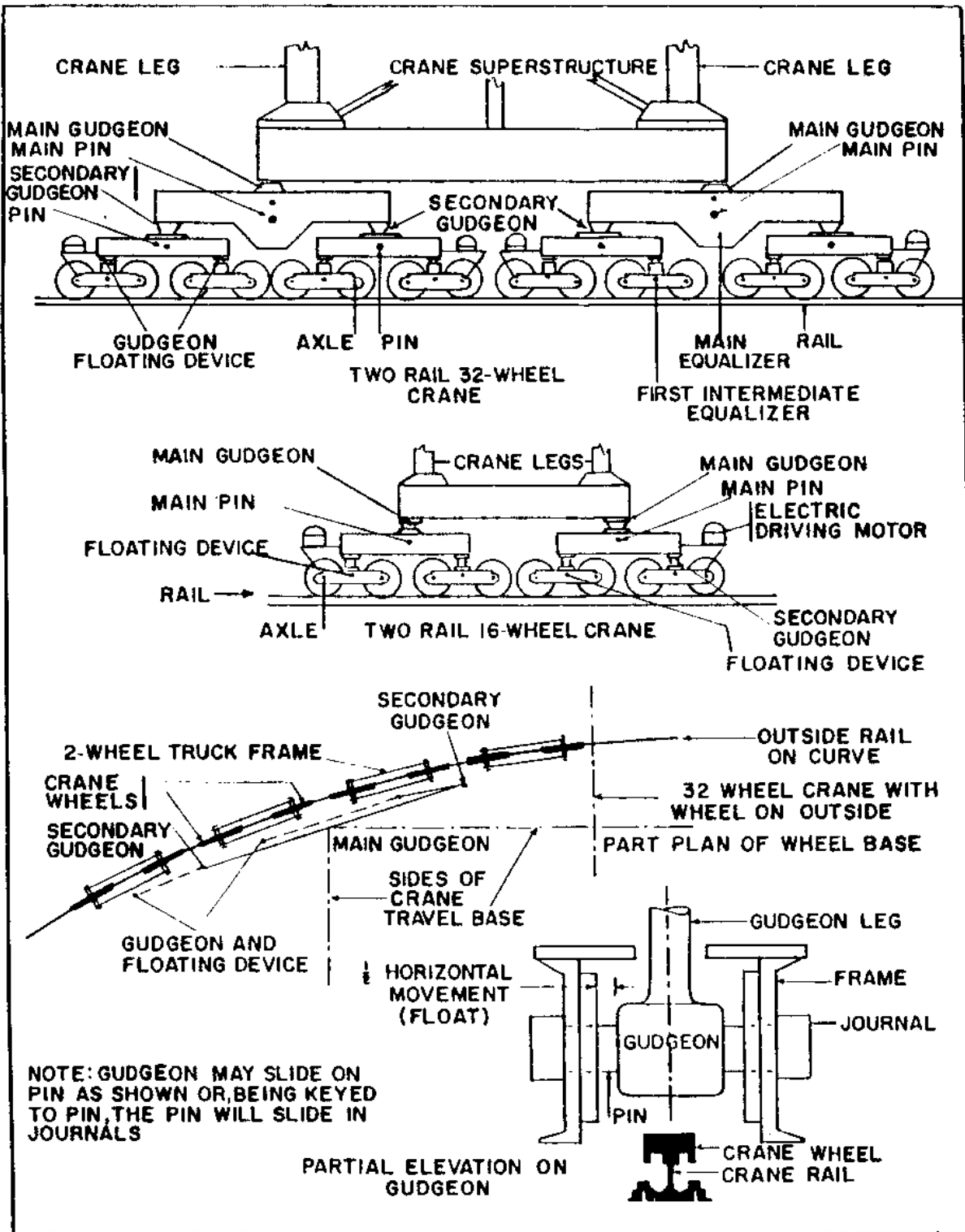


Figure 6
Travel Bases for Cranes

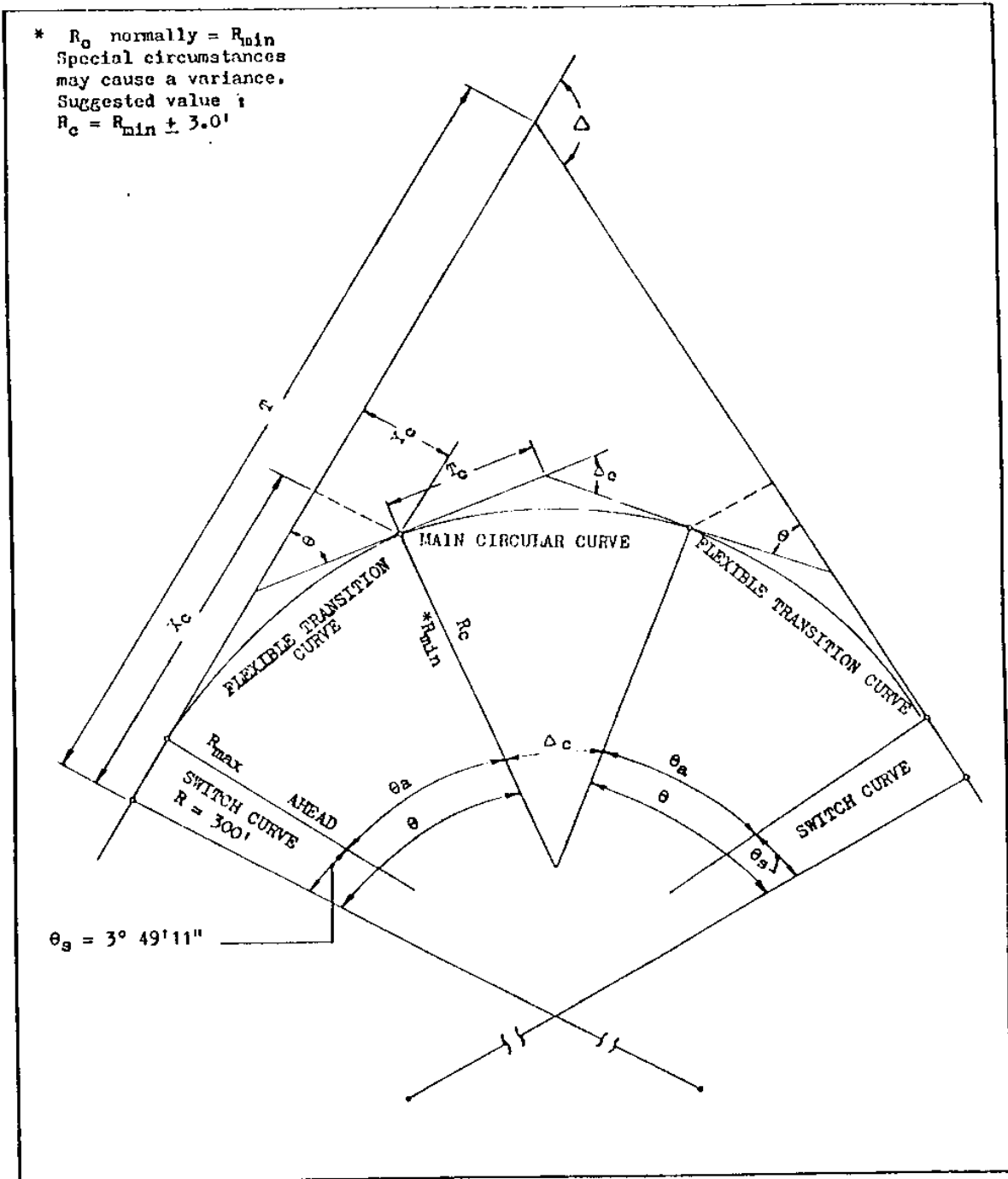


Figure 8
 Functions of Inner or Control Curve

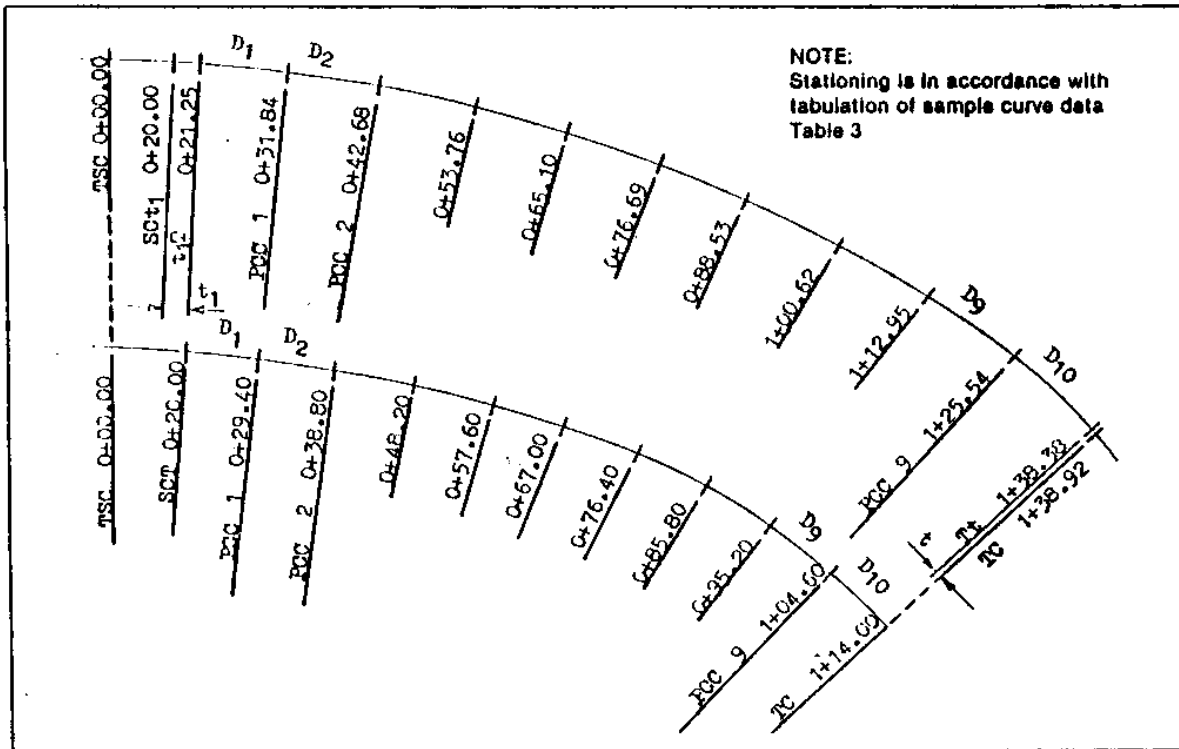


Figure 9
Relation Between Inner and Outer Curve Stationing and
Transition Curve Arc Definition

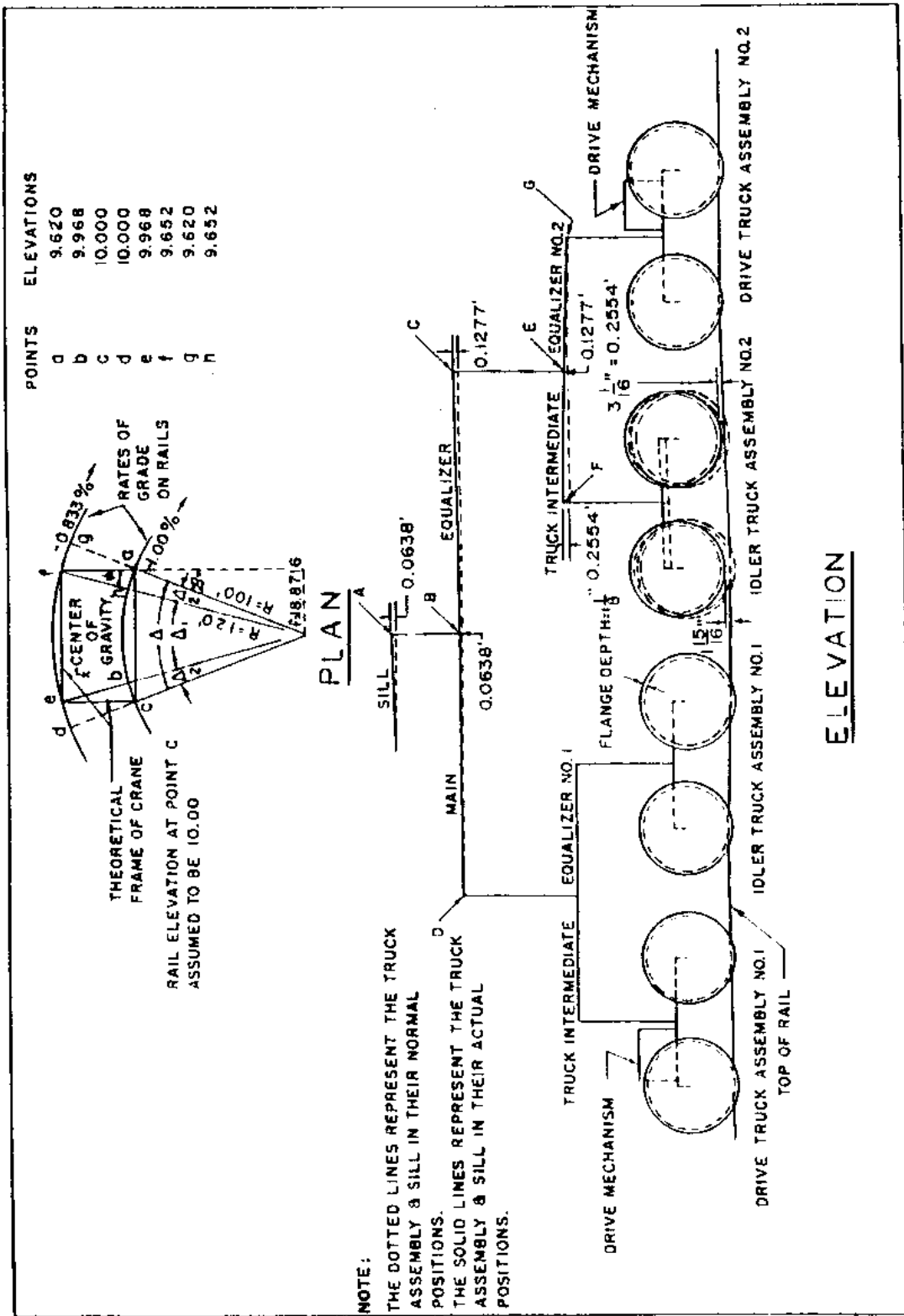


Figure 10
 Crane Reaction to Grades on Horizontal Curves

FIGURE 10
 Crane Reaction to Grades on Horizontal Curves

MIL-HDBK-1005/6

Table 1 Design Procedure

Description	Procedure	Reference
Equivalent length	Equivalent length of crane equals $2f$ where: $f = \sqrt{\left(\frac{a^2}{4} + \frac{b^2}{4} + \frac{c^2}{4} + \frac{d^2}{4}\right)} \quad (8, 16, 32 \text{ wheel});$ $f = \sqrt{\left(\frac{a^2}{4} + \frac{b^2}{6} + \frac{2c^2}{9} + \frac{d^2}{4}\right)} \quad (24 \text{ wheel})$	Figures 4 and 5
Reduced gage (G_R)	For any circular curve, of a given radius R , where R is the radius of the inner rail: $G_R = (R^2 + 2e\sqrt{R^2 - f^2} + e^2)^{\frac{1}{2}} - R$ <p>Notes: (1) Check to be certain that a gage reduction is not required for a 300-ft. radius, i.e.,</p> $G - G_R \leq \frac{1}{2} \text{ float of crane}$ <p>(2) For two or more cranes, use the average equivalent length of the cranes to obtain the reduced gage, and check to ascertain that this gage reduction is within the float capability of each crane. If the gage reduction is too great for any crane, adjust the track design using the equivalent length of the critical crane until a satisfactory reduced gage is obtained.</p>	Figure 4
Lateral Float	Lateral float considerations: <p>(a) $(e - G_R) \leq \frac{1}{2}$ (available lateral float), for a large radius curve, i.e., $R > 300$ ft.</p> <p>(b) $(G_{n1} - G_{n2}) \leq \frac{1}{2}$ (available lateral float), for any two points, not more than equivalent length of crane apart.</p>	Par. 3.4 Figures 4, 6 and 7

MIL-HDBK-1005/6

Table 1 Design Procedure

<p><u>Inside Or Control Curve</u></p> <p>Switch (fixed) curve</p>	<p>(1) Length of switch and number of compounding arcs</p> $L_s = 20.00 \text{ ft.}$ $N_s = 1$ <p>(2) Degree of curve and radius at both the T.S.C. and S.C.T.</p> $R = 300.00 \text{ ft.}$ $D = 19^\circ 5' 55''$ <p>(3) Central angle</p> $2_a = 3^\circ 49' 11''$	<p>Par. 3.5 Figures 8 and 9</p>
<p>Transition (flexible) curve</p>	<p>(1) R_{\min}, as established in "Main Circular Curve".</p> <p>Notes: (1) For two-rail portal crane, the radius is to the centerline of the inside rail.</p> <p>(2) For four-rail portal crane, the radius is to the centerline of the inside track.</p> <p>(2) Number of intermediate arcs of equal length:</p> $N = 10 \text{ (may be changed if necessary)}$ <p>(3) Degree of curve and corresponding radius for an arc:</p> $D_n = D_{n-1} + \frac{(D_{\max} - 19.0986^\circ)}{N}$ $R_n = \frac{5729.578}{D_n}$ <p>Note: When $n = 1$, $D_o = D_s = 19.0986^\circ$</p>	<p>Par. 3.7 Figures 8 and 9</p> <p>Figures 8 and 9</p>

MIL-HDBK-1005/6

Table 1 Design Procedure

<p>Transition (flexible) curve (continued)</p>	<p>(4) Method of establishing length L_a</p> <p>Known e, f, F, and R_{\min}</p> <p>Where: $F = \frac{1}{2}$ the maximum lateral float capability, in feet.</p> <p>Note: Where the length of flexible transition (L_a) computed is greater than the space available, the length may be reduced by shortening the value of R_{\min} in accordance with Section 3, paragraph 3.4.2.</p> <p>Determine: R_{2f} the radius at a point on the transition curve, $2f$ distance back from the TC</p> <p>Step (a) $G_{\min} = (R_{\min}^2 + 2e \sqrt{(R_{\min}^2 - f^2) + e^2})^{1/2} - R_{\min}$</p> <p>Step (b) $R_{2f} = \frac{-b \pm \sqrt{b^2 - 4ac}}{2a}$</p> <p>Where:</p> <p>$a = 2e - F - 2G_{\min}$</p> <p>$b = e(2e - F - 2G_{\min})$</p> <p>$c = -ef^2$</p> <p>Determine: L_a</p> <p>Step (a) $D_{\max} = \frac{5729.578}{R_{\min}}$</p> <p>$D_1 = D_s + \frac{D_{\max} - 19.0986^\circ}{N}$, where $D_s = 19.0986^\circ$</p> <p>$R_{\max} = \frac{5729.578}{D_1}$</p>	<p>Figure 8</p>
--	--	-----------------

MIL-HDBK-1005/6

Table 1 Design Procedure

<p>Transition (flexible) curve (continued)</p>	$\text{Step (b)} \quad D_{2f} = \frac{5729.578}{R_{2f}}$ $\text{Step (c)} \quad L_a = \frac{2f (D_{\max} - D_1)}{D_{\max} - D_{2f}}$ <p>Notes: (1) L_a should be adjusted to the nearest foot to facilitate computations.</p> <p>(2) Computation of L_a by this method leads to the probable satisfaction of the float considerations set forth in the first part of this table. To be sure that the float is fully satisfied, the design, when completed, should be checked by the NAVFAC TRACKS program to obtain an accurate calculation of the float.</p> <p>(5) Arc length and central angle, corresponding with the degree of curve D_n for an arc (n):</p> $A_n = \frac{L_a}{N}$ $\Delta_n = \frac{A_n D_n}{100}$ <p>(6) The central angle from the T.S.C. to any P.C.C. is:</p> $2_n = 2_{n-1} + \Delta_n \dots \text{ or } \dots$ $2_n = 3.8197^\circ + \frac{L_n - 20}{200} (D_1 + D_n)$	
--	---	--

MIL-HDBK-1005/6

Table 1 Design Procedure

Transition (flexible) curve (continued)	<p>(7) The central angle of the flexible transition is:</p> $2_a = 2 - 2_s \text{ or,}$ $2_a = \frac{L_a}{200} (D_1 + D_{max})$ <p>the coordinates for any P.C.C. are:</p> $X_n = X_{n-1} + R_n (\sin 2_n - \sin 2_{n-1})$ $Y_n = Y_{n-1} + R_n (\cos 2_{n-1} - \cos 2_n)$ <p>Note: 2_n, X_n, and Y_n are used herein to designate angles and offset distances from the T.S.C. to the points of compound curvature only. They are not used to designate angles or offsets to any arbitrary point on the transition curve.</p>	
Complete curve combination	<p>The tangent distance for the complete curve is:</p> $T = X_c - (R_c \sin 2) + (R_c \cos 2 + Y_c) \tan \frac{2}{2}$	Figure 8
<u>Outside Curve</u> Switch (fixed)	<p>(1) This curve is identical with the switch curve (inside or control)</p> <p>(2) The lead is:</p> $t_s = G \sin 3^\circ 49' 11''$	<p>Figure 8</p> <p>Figure 8 Par. 3.10</p>
Reduced gage (G_s)	<p>G_s at the S.C.T., by convergence of outer and inner rails of switch curve is:</p> $G_s = G \cos 3^\circ 49' 11''$	Figure 8

MIL-HDBK-1005/6

Table 1 Design Procedure

Transition (flexible) curve	<p>(1) Radius and length of any arc</p> <p>$R_n = G_s +$ radius of corresponding arc of inner curve</p> <p>$A_n = R_n \Delta_n$ (A_n in feet, Δ_n in radians)</p> <p>(2) Distance shifted back of the S.C.T. along tangent t_s is:</p> $d = \frac{G_s - G_{\min}}{\sin 2_a}$ <p>(3) Tangent length between end of switch curve and beginning of flexible curve, and its offset distances in the W and Z directions are:</p> <p>$t_1 = t_s - d$</p> <p>W direction = $t_1 \cos 3^\circ 49' 11''$</p> <p>Z direction = $t_1 \sin 3^\circ 49' 11''$</p> <p>(4) Tangent length between end of flexible curve and main circular curve, and its offset distances in the W and Z directions are:</p> $t = \frac{G_s - G_{\min}}{\tan 2_a}$ <p>W direction = $t \cos 2$</p> <p>Z direction = $t \sin 2$</p> <p>(5) The coordinates for any P.C.C. are:</p> <p>$W_n = W_{n-1} + R_n (\sin 2_n - \sin 2_{n-1})$</p> <p>$Z_n = Z_{n-1} + R_n (\cos 2_{n-1} - \cos 2_n)$</p> <p>(6) The gage at any P.C.C. of the transition curve, back of R_{\min} is:</p> <p>$G_n = G_s - d \sin (2_n - 2_s)$</p>	<p>Figure 8</p> <p>Figure 8 Par. 3.10</p> <p>Figure 8 Par. 3.10</p>
-----------------------------------	---	---

MIL-HDBK-1005/6

Table 1 Design Procedure

<u>Main Circular Curve</u>	<p>The central angle is equal to:</p> $\alpha_c = \alpha - 2\beta$ <p>Radius of inner main circular curve = R_c</p> <p>Radius of outer main circular curve = $R_c + G_{min}$</p> <p>Gage on main circular curve is G_{min}</p>	<p>Figures 8 and 9</p>
------------------------------------	---	----------------------------

MIL-HDBK-1005/6

Table 2 Sample Curve Composition

Item	Computation (partial)	Reference
Transition curve (inside or control):	Given: $D_{\min} = 19.0986^\circ$ (end of switch curve) $D_{\max} = 70.0000^\circ$ $G = e = 30.000$ ft. $L_a = 94.000$ ft. $f = 18.820$ ft. Average float capability of crane 0.50 ft. in either direction.	Figures 6 and 7
Number of arcs _____	$N = 10$	
Degree of arc No. 2	$D_2 = 24.1887 + \frac{70.000 - 19.0986}{10} = 29.2789^\circ$	
Degree of arc No. 3	$D_3 = 29.2789 + \frac{70.000 - 19.0986}{10} = 34.3690^\circ$	
Central angle arc No. 1	$\theta_1 = \frac{9.4 \times 24.1887}{100} = 2.2737^\circ = 2^\circ 16' 25''$	
Central angle arc No. 2	$\theta_2 = \frac{9.4 \times 29.2789}{100} = 2.7522^\circ = 2^\circ 45' 08''$	
Central angle to S.C.T.	$2_s = 3^\circ 49' 11''$	Figures 7 and 8
2_n for arcs to P.C.C. 1	$2_1 = 3^\circ 49' 11'' + 2^\circ 16' 25'' = 6^\circ 05' 36''$	
2_n for arcs to P.C.C. 2	$2_2 = 6^\circ 05' 36'' + 2^\circ 45' 08'' = 8^\circ 50' 44''$	
Coordinates for P.C.C. 7	$X_7 = 74.671 + 104.689 (\sin 29^\circ 47' 02'' - \sin 24^\circ 38' 21'') = 83.028$ $Y_7 = 13.121 + 104.689 (\cos 24^\circ 38' 21'' - \cos 29^\circ 47' 02'') = 17.418$	

MIL-HDBK-1005/6

Notes: For complete design procedure see Table 1.
For all values for P.C.C. No. 1 through 9, see
Table 3 and Figure 9.

Table 2 Sample Curve Composition

Tangent distance for $\Delta = 120^\circ 00' 00''$	$T = 104.986 - (81.851 \sin 48^\circ 05' 18'') + [(81.851 \cos 48^\circ 05' 18'' + 34.943) \tan 60^\circ 00' 00''] = 199.280$	Figure 8
Transition curve (outside): Lead t_s	$t_s = 30.000 \sin 3^\circ 49' 11'' = 1.999 \text{ ft.}$	
Reduced gage	$G_s = 30.000 \cos 3^\circ 49' 11'' = 29.933 \text{ ft.}$ $G_{\min} = (81.851^2 - 60\sqrt{81.851^2 - 18.820^2} + 30.000)^{\frac{1}{2}} - 81.851 = 29.410 \text{ ft.}$	Figure 7 Figure 7
2_a , Central angle of Flexible Transition Curve	$2_a = \frac{94.000}{200} (24.1887 + 70) = 44.2687 = 44^\circ 16' 07''$	Figure 7
Distance shifted back of S.C.T.	$d = \frac{29.933 - 29.410}{\sin 44^\circ 16' 07''} = 0.749 \text{ ft.}$	Figure 7
Distance between end of transition and main curves	$t = \frac{29.933 - 29.410}{\tan 44^\circ 16' 07''} = 0.537 \text{ ft.}$	Figure 7

Notes: For complete design procedure see Table 1.
For all values for P.C.C. No. 1 through 9, see Table 3 and Figure 9.

MIL-HDBK-1005/6

This page intentionally left blank.

Table 3
Tabulation of Sample Curve Composition

		Inner Curve										
		1	2	3	4	5	6	7	8	9	10	11
		Control Point	Control Point Station	D_n Degrees	R_n Feet	Δ_n Degrees (Decimals)	Δ_n Degrees, Min., Sec.	θ_n	Sine θ_n	Sine θ_n Minus Sine θ_{n-1}	Cosine θ_n	Cosine θ_{n-1} Minus Cosine θ_n
Fixed Curve	T.S.C.	0 + 00.00		19.0986	300.00							
	S.C.T.	0 + 20.00		19.0986	300.00							
Flexible Transition Curve	S.C.T.	0 + 20.00						3° 49' 11"	0.0666170	0.0395325	0.9977786	.0054284
	P.C.C.	0 + 29.40	24.1887	236.870	2.2737	2° 16' 25"	6° 05' 36"	0.1061495	0.0395325	0.9943502	.0062439	
	P.C.C.	0 + 38.80	29.2789	195.690	2.7322	2° 45' 08"	8° 50' 44"	0.1537723	0.0476228	0.9881063	.0102564	
	P.C.C.	0 + 48.20	34.3690	166.708	3.2307	3° 13' 51"	12° 04' 35"	0.2092141	0.0554418	0.9778699	.0155830	
	P.C.C.	0 + 57.60	39.4592	145.205	3.7092	3° 42' 33"	15° 47' 08"	0.2720367	0.0628226	0.9622869	.0224338	
	P.C.C.	0 + 67.00	44.5493	128.612	4.1876	4° 11' 15"	19° 58' 23"	0.3415789	0.0695422	0.9398531	.0309020	
	P.C.C.	0 + 76.40	49.6394	115.424	4.6661	4° 39' 58"	24° 38' 21"	0.4169028	0.0753239	0.9089511	.0410452	
	P.C.C.	0 + 85.80	54.7296	104.689	5.1446	5° 08' 41"	29° 47' 02"	0.4967286	0.0798258	0.8679059	.0528479	
	P.C.C.	0 + 95.20	59.8197	95.781	5.6231	5° 37' 23"	35° 24' 25"	0.5793793	0.0826507	0.8150580	.0661994	
	P.C.C.	1 + 04.60	64.9099	88.270	6.1015	6° 06' 05"	41° 30' 30"	0.6627298	0.0835505	0.7488586	.0808754	
	T.C.	1 + 14.00	70.0000	81.851	6.5800	6° 34' 48"	48° 05' 18"	0.7441763	0.0814465	0.5679832		

Table 3
Tabulation of Sample Curve Composition

			Outer Curve								
11	12	13	14	15	16	17	18	19	20	21	
Cosine θ_{n-1} Minus Cosine θ_n	Coordinates		R_n Feet	Δ_n Radians	A Feet	Coordinates		Control Point Station	Control Point	G_n (Feet)	
	X Feet	Y Feet				W Feet	Z Feet				
	0.000	0.000	300.00			0.000	0.000	0 + 00.00	T.S.C.		Fixed Curve
	19.985	0.666				19.985	0.666	0 + 20.00	S.C. ₁		
	19.985	0.666			$t_1 = 1.250$	21.292	0.749	0 + 21.25	$t_1 T$		Flexible Transition Curve
.0034284	29.549	1.478	266.803	0.0396842	10.588	31.779	1.664	0 + 31.84	P.C.C.	29.9033	
.0062439	38.668	2.700	225.623	0.0480352	10.838	42.524	3.073	0 + 42.68	P.C.C.	29.8674	
.0102364	47.911	4.406	196.641	0.0563860	11.088	53.426	5.086	0 + 53.76	P.C.C.	29.8254	
.0155830	57.033	6.669	175.136	0.0647370	11.338	64.429	7.815	0 + 65.10	P.C.C.	29.7777	
.0224338	65.977	9.554	158.545	0.0730880	11.588	75.454	11.372	0 + 76.69	P.C.C.	29.7246	
.0309020	74.671	13.121	145.357	0.0814389	11.838	86.403	15.863	0 + 88.53	P.C.C.	29.6668	
.0410452	83.028	17.418	134.622	0.0897898	12.088	97.149	21.390	1 + 00.62	P.C.C.	29.6051	
.0528479	90.944	22.480	125.714	0.0981416	12.338	107.540	28.033	1 + 12.95	P.C.C.	29.5407	
.0661994	98.302	28.323	118.203	0.1064915	12.588	117.392	35.858	1 + 25.54	P.C.C.	29.4751	
.0808754	104.968	34.943	111.784	0.1148128	12.838	126.495	44.898	1 + 38.38	T.C.	29.4102	
					$t = 0.537$	126.855	45.298	1 + 38.92	T.C.		

MIL-HDBK-1005/6

TABLE 4
Symbols and Nomenclature

<u>Symbol</u>	<u>Definition</u>
G	Nominal track gage on tangent track, centerline to centerline of rail of a two-rail-system or centerline to centerline of track of a four-rail-system.
G_n	Gage at any P.C.C. of Transition Curve.
G_R	Reduced gage for a given radius.
G_s	Reduced gage at S.C.T.
G_{min}	Reduced gage at P.C.T. or T.C.
g	Rate of grade of inside rail.
f	One half equivalent length of crane.
e	Crane gage (also normally tangent track gage).
Float	Lateral movement of crane tracks.
F	One-half maximum lateral float capability, where maximum float equals sum of float in either direction.
T.S.C.	Point of Tangent to Switch (fixed) Curve.
S.C.T.	End of Switch Curve and beginning of Flexible Transition Curve (on inner alignment).
P.C.C.	Point of Compound Curvature (common point of any two successive circular arcs of transition).
P.C.T.	Point of Compound Transition (on inner alignment where no main circular curve is employed).
T.C.	End of Transition Curve (point of Transition Curve to main circular curve).
t_s	Length of lead of inner Switch Curve over outer Switch Curve.
t_1	Short tangent length between outer Switch Curve and outer Flexible Transition Curve.
NOTE:	All dimensions are given in feet, except angles are in degree - minutes - seconds

MIL-HDBK-1005/6

TABLE 4
Symbols and Nomenclature

<u>Symbol</u>	<u>Definition</u>
t	Short tangent length between sharp end of outer Transition Curve and beginning of outer main circular curve.
S.C.t ₁	End of outer switch curve and beginning of tangent t ₁ .
t ₁ .T	End of tangent t ₁ and beginning of outer Flexible Transition Curve.
T.t	End of outer Flexible Transition Curve and beginning of tangent t.
t.C.	End of tangent t and beginning of main circular curve (on outer alignment).
t.t.	Point of tangent to tangent (outer alignment where no main circular curve is employed).
D	Degree of curve (central angle subtended by arc of 100 ft).
D _{min}	Degree of curve at the end of the Switch Curve.
D _{max}	Degree of curve at T.C.
D _n	Degree of curve at any arc of the Transition Curve.
d	Distance of shift of outer transition curve along tangent at S.C.T. to achieve reduced gage at circular curve.
D _c	Degree of curve of main circular curve.
R _{max}	Radius of flattest arc of Flexible Transition Curve.
R _{min}	Radius of sharpest arc of Flexible Transition Curve.
R _c	Radius of main circular curve.
R _s	Radius of switch curve (300' constant).
L _s	Length of switch curve (20.00 ft.).
L _a	Length of Flexible Transition Curve.
L	Length of Transition Curve (total length of Switch Curve and Flexible Transition Curve).
NOTE:	All dimensions are given in feet, except angles are in degree - minutes - seconds

MIL-HDBK-1005/6

TABLE 4
Symbols and Nomenclature

<u>Symbol</u>	<u>Definition</u>
L_n	Length along Transition Curve from T.S.C. to any P.C.C.
A_s	Length of arc of Fixed Transition Curve (Switch Curve).
A_n	Length of arcs of Flexible Transition Curve.
θ_n	Central angle of circular arcs of Flexible Transition Curve.
θ	Intersection angle of main control tangents.
θ_c	Central angle of main circular curve.
θ_s	Central angle of switch curve ($3^\circ 49' 11''$).
θ_n	Central angle from T.S.C. to any P.C.C.
θ_a	Central angle of Flexible Transition Curve (S.C.T. to T.C.).
θ	Central angle from T.S.C. to T.C.
M	One half the distance between the parallel tangent tracks.
N	Number of Arcs of Transition Curve Constant (Eq 1 and 2)
n	Any point of Compound Curvature.
X	X-coordinate to point n on inner curve.
X_c	X-coordinate to T.C.
Y	Y-coordinate to point n on inner curve.
Y_c	Y-coordinate to T.C.
W	X-coordinate to point n on outer curve.
w	Total number of wheels of crane.
Z	Y-coordinate to point n on outer curve.
PI_a	Point of intersection of main control tangents.
NOTE:	All dimensions are given in feet, except angles are in degree - minutes - seconds

MIL-HDBK-1005/6

TABLE 4
Symbols and Nomenclature

<u>Symbol</u>	<u>Definition</u>
PI _c	Point of intersection of main circular curve tangents.
T	Tangent distance from PI _a to T.S.C.
T _c	Tangent distance from PI _c to T.C.
S	Crane wheel suspension (Eq 9 and 10).
NOTE:	All dimensions are given in feet, except angles are in degree - minutes - seconds

MIL-HDBK-1005/6

Section 4. PORTAL CRANE TRACK REPLACEMENT CURVE ALIGNMENT

4.1 Guidance. NAVFACENGCOM Headquarters has a computer program system and the accompanying documentation and application manuals, entitled TRACKS, available for use on the NAVFAC Computer Network for replacement track curve alignment. Although it is not mandatory to use this program for replacement design, its use is highly recommended due to its speed, accuracy and cost effectiveness. Since this program will play an important role in most track rehabilitation, the criteria of this section will be guided by the information needs of the computer procedure. For information and assistance in the use of the TRACKS program, contact NAVFACENGCOM Headquarters.

4.2 Survey Requirements. For all replacement track design, where the existing foundation is to be reused, the following survey tolerances are required.

a) Transit and Distance Measurement Tolerance. Transit and distance measurement survey to locate the centerline of the existing track should be made to the closest .005 foot for distances and 20 seconds for angles. The centerline of rail for a four-rail system shall be the centerline of standard gage, while the centerline of rail for the two-rail system shall be the centerline of each rail. If it is the intent to utilize the TRACKS program, the survey data should include for inner and outer rail: delta angle, deflection angles to, and chord lengths between points about 5 feet apart along the existing track. Control points should be made permanent to last at least 2 years.

b) Dig-Up Survey Measurement Tolerance. Dig-up survey, to locate the centerline of the existing track in relation to the centerline of the existing foundations, should be made at locations spaced at 15-to 25-foot intervals along the curve. The actual number of dig-up locations is determined by the type of curve and by the matching relationship of the rail and foundation centerlines.

4.3 Foundation Structural Analysis Requirements. A structural analysis shall be made of the track foundation, for eccentricity, by the responsible structural authority. This analysis shall produce maximum allowable distances that the track centerline may be offset from the foundation centerline. These allowable eccentricities shall not be exceeded by the replacement track design without express approval of the cognizant NAVFACENGCOM Engineering Field Division.

4.4 Replacement Track Design Requirements. A replacement alignment design shall be made of inner and outer rails in accordance with the pertinent criteria of this chapter and, if the TRACKS computer program is used, with the Application Manual for Portal Crane Track Design and the TRACKS Users Manual. This design shall include proper mathematical steps and adequate checks to insure that the following criteria are satisfied:

MIL-HDBK-1005/6

a) Deviations. Deviations of design alignment from centerline of existing foundations shall not exceed the allowable structural eccentricities. Deviations of 1 inch or less can generally be achieved.

b) Offset Closures. Offset closures (i.e. the perpendicular distance from the surveyed curve tangent to the design curve tangent, at the design PT) must be 0.2 inch or less. For sketches see Application Manual for Portal Crane Track Design or TRACKS Users Manual.

c) Tangent Closures. Tangent closures at the midpoint of the two partial curves making up a horseshoe curve must not be overlapping. (Tangent closure and horseshoe curves are described in detail in the Application Manual for Portal Crane Track Design and the TRACKS Users Manual.) Overlapping tangent closures indicate that the two partial curves have no common point of tangency.

d) Required Float. Required crane float shall not exceed the allowable float for any crane that will traverse the track.

e) Design Gage. Design gage between rails shall be used as a check of field placement of track.

f) Physical Obstructions. Physical obstructions must be checked before allowing a new crane on the track.

4.5 Rail Construction Requirements. Prior to any portal crane track curve construction, all float requirements of portal cranes traversing the design curve must be satisfied. Working drawings showing adequate information for rail fabrication shall be prepared. These drawings should be formal, scaled layouts of the track alignment and should contain the following design information as a minimum:

- a) Tangent lengths
- b) PC, PT and PI locations
- c) For each segment
 - (1) Tangent offsets to segment PCC points
 - (2) Delta angles
 - (3) Radii
 - (4) Arc Lengths
 - (5) Stations of PCC's
 - (6) Gages

MIL-HDBK-1005/6

This information is necessary for working drawings for trackage described in Chapter 2, Section 3 as well. The field survey made for replacement track design shall establish reference marks for the placement of rails. Rails shall be placed within $\pm 1/4$ inch of the designed rail centerline alignment. Track gage shall be within $\pm 1/2$ inch of the design gage. Placement methods shall be such as not to cause kinks or other sharp changes in the smooth curvature of the rails.

MIL-HDBK-1005/6

REFERENCES

NOTE: THE FOLLOWING REFERENCED DOCUMENTS FORM A PART OF THIS HANDBOOK TO THE EXTENT SPECIFIED HEREIN. USERS OF THIS HANDBOOK SHOULD REFER TO THE LATEST REVISIONS OF CITED DOCUMENTS UNLESS OTHERWISE DIRECTED.

FEDERAL/MILITARY SPECIFICATIONS, STANDARDS, BULLETINS, HANDBOOKS, AND NAVFAC GUIDE SPECIFICATIONS:

Unless otherwise indicated, copies are available from the Naval Publishing and Printing Service Office (NPPSO), Standardization Document Order Desk, Building 4D, 700 Robbins Avenue, Philadelphia, PA 19111-5094

FEDERAL SPECIFICATIONS

MM-T-371 E	Ties, Railroad, Wood, (Cross and Switch)
TT-W-571 J	Wood Preservation: Treating Practices

MILITARY SPECIFICATIONS

MIL-R-3911 D	Rail, Tee, Railway: Relay Rail
--------------	--------------------------------

HANDBOOKS

MIL-HDBK-1004/7	Wire Communications and Signal Systems
MIL-HDBK-1005/2	Hydrology
MIL-HDBK-1005/3	Drainage Systems
MIL-HDBK-1008A	Fire Protection for Facilities Engineering, Design and Construction
MIL-HDBK-1025/1	Piers and Wharves

GUIDE SPECIFICATIONS

NFGS-02453	Welding Crane and Railroad Rail - Thermite Method
------------	--

MIL-HDBK-1005/6

NAVY MANUALS, P-PUBLICATIONS, AND MAINTENANCE OPERATING MANUALS:

Available from Commanding Officer, Naval Publications and Forms Center, (NPFC), 5801 Tabor Avenue, Philadelphia, PA 19120-5099. To order these documents: Government agencies must use the Military Standard Requisitioning and Issue Procedure (MILSTRIP); the private sector must write to NPFC, ATTENTION: Cash Sales, Code 1051, 5801 Tabor Avenue, Philadelphia, PA 19120-5099.

DM 07.01	Soil Mechanics
DM 07.02	Foundations and Earth Structures
DM 38.01	Weight Handling Equipment
P-272	Definitive Designs

COMPUTER PROGRAMS

TRACKS	Application Manual for Portal Crane Track Design
	TRACKS Users Manual

Unless otherwise indicated, copies are available from Naval Facilities Engineering Command, 200 Stovall Street, Alexandria, VA 22332-2300, ATTENTION: Code 04B.

OTHER GOVERNMENT DOCUMENTS AND PUBLICATIONS:

U.S. DEPARTMENT OF TRANSPORTATION

Federal Highway Administration

D6.1	Manual on Uniform Traffic Control Devices for Streets and Highways, December 1988
------	--

Unless otherwise indicated, copies are available from Superintendent of Documents, U. S. Government Printing Office, Washington, DC 20402, Phone 202-783-3238.

Federal Railroad Administration

Track Safety Standards

Unless otherwise indicated, copies are available from Superintendent of Documents, U.S. Government Printing Office, Washington, DC 20402, Phone 202-783-3238.

MIL-HDBK-1005/6

NON-GOVERNMENT PUBLICATIONS:

ASSOCIATION OF AMERICAN RAILROADS

AAR Specifications for Design, Fabrication and Construction of Freight Cars, Volume 1

AAR Scale Handbook

AAR Supplement to Manual of Standards and Recommended Practices

Unless otherwise indicated, copies are available from the Association of American Railroads, 50 F Street N.W., Washington, DC 20001-1564, Phone 202-639-2100.

AMERICAN RAILWAY ENGINEERING ASSOCIATION

AREA Manual for Railway Engineering, 1990

AREA Portfolio of Trachwork Plans, 1990

AREA Bulletin 709

Unless otherwise indicated, copies are available from the American Railway Engineering Association, 50 F Street, N.W. Washington, DC 20001-1564, Phone 202-639-2190.

AMERICAN SOCIETY FOR TESTING AND MATERIALS

ASTM D 751-89	Standard Test Methods for Coated Fabrics
ASTM D 1682-64 (R 1975)	Standard Test Methods for Breaking Load and Elongation of Textile Fabrics
ASTM D 1777-64 (R-1975)	Standard Method for Measuring Thickness of Textile Materials
ASTM D 2261-83	Standard Test Method for Tearing Strength of Woven Fabrics by the Tongue (Single Rip) Method (Constant Rate of Extension Tensile Testing Machine)

MIL-HDBK-1005/6

- ASTM D 2262-83 Standard Test Method for Tearing Strength of Woven Fabrics by the Tongue (Single Rip) Method (Constant Rate of Traverse Tensile Testing Machine)
- ASTM D 3786-87 Standard Test Method for Hydraulic Bursting Strength of Knitted Goods and Nonwoven Fabrics - Diaphragm Bursting Strength Tester Method

Unless otherwise indicated, copies are available from the American Society for Testing and Materials (ASTM), 1916 Race Street, Philadelphia, PA 19013-1187, Phone 215-299-5400.

AMERICAN WOOD PRESERVERS' ASSOCIATION

Crossties and Switchties

Unless otherwise indicated, copies are available from the American Wood Preservers' Association, P.O. Box 849, Stevensville, MD 21666, Phone 301-643-4163.

NATIONAL RAILWAY PUBLICATION CO.

Railway Line Clearances

Unless otherwise indicated, copies are available from the National Railway Publication Co., 424 West 33rd Street, New York, NY 10001.

CUSTODIAN
NAVY - YD

PREPARING ACTIVITY
NAVY - YD

PROJECT NO.
FACR-1071