

INCH-POUND

A-A-59487A

3 July 2001**SUPERSEDING**

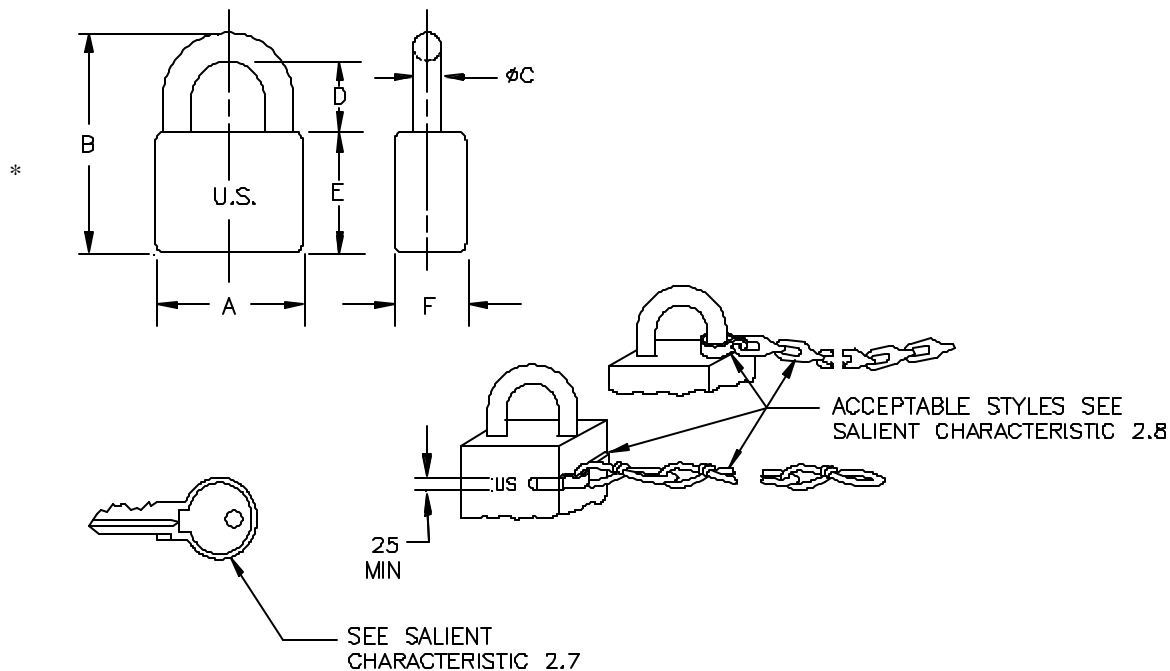
A-A-59487

6 August 1999

COMMERCIAL ITEM DESCRIPTION**PADLOCK (KEY OPERATED)**

The General Services Administration has authorized the use of this Commercial Item Description for all federal agencies.

1. **SCOPE:** This Commercial Item Description (CID) covers key operated, dead bolt padlocks intended for low security use.
2. **SALIENT CHARACTERISTICS:**
 - 2.1 Padlock furnished under this CID shall be individually keyed, double dead-bolt locking construction and shall conform with the requirements of ASTM F883, Type P01, Option A (captive key). Padlocks shall conform to the dimensions as specified in Table I and figures below.



Beneficial comments, recommendations, additions, deletions, clarifications, etc., and data which may improve this document should be sent to: Defense Supply Center Philadelphia, ATTN: DSCP-ITD, 700 Robbins Avenue, Philadelphia, PA 19111-5096.

ASMC N/A

FSC 5340

DISTRIBUTION STATEMENT A. Approved for public release; distribution is unlimited.

A-A-59487A

Table I. DASH NUMBER and DIMENSIONS

DASH NUMBER	A ± .100	B REF	ØC ± .040	D		E		F MIN
				MIN	MAX	MIN	MAX	
1	1.500	2.790	.281	.688	1.188	1.250	2.000	.594
	1.500 LONG SHACKLE	4.660		2.500	3.000			
2	1.750	3.375	.343	1.125	1.500	1.250	2.000	.688

- 2.2 Material. Shackle, case, spring and attachments shall be in accordance with the following:
- Brass or bronze – conforming to ASTM B16, B30, B505, B584, or B770.
 - Corrosion resistant steel, carbon steel or alloy steel as required in commercial practice unless otherwise specified.
 - Spring – shall be phosphor bronze conforming to ASTM B159.
 - Steel shackle – Shall be uniformly case hardened and shall meet the minimum desired grade requirements as specified for Forcing Tests of ASTM F883.
 - Attachment clevis – Shall be brass or steel with zinc electroplated coating of ASTM B633.
- 2.3 Finish. Brass or bronze – clear lacquer on exterior in accordance with commercial practice. Carbon steel or alloy steel – shall be zinc or chromium electroplated conforming to ASTM B633 or B177. Prior to application of any coating, all exterior surface shall have a smooth finish. Sharp edges and burrs shall be removed. The case surface shall have a smooth or tumbled finish for laminated construction.
- 2.4 Lubrication. Working parts shall be lubricated as needed with a lubricant normally used for the intended purpose.
- 2.5 Case. Unless otherwise specified, the case shall be laminated or solid at the supplier's option of the materials indicated for the type of padlock. If a solid steel case is specified, the case shall be uniformly case hardened steel with a hardness in the range of 40 to 50 on the Rockwell C scale (40-50 HRC).
- 2.6 Shackle. The shackle shall be “U” shaped and may be either spring released or pull released. The diameter of the shackle shall be as specified in Table I. When steel shackle is specified, the shackle shall be uniformly case hardened.
- 2.7 Keying. All keys shall be captive (unremovable) in the cylinder when unlocked. Each padlock shall be furnished with two (2) keys. No key shall operate more than one (1) padlock per 50 padlocks. Individually keyed padlocks shall have at least as many possible key changes as follow:
- DASH NUMBER 1 – 4,000
DASH NUMBER 2 – 10,000
- 2.8 Chain. When specified, the chain supplied with the padlock shall conform to RR-C-271, Type II, Class 2 or 6 (brass or bronze or steel, as applicable). The chain shall be nine (9) inches long ± one (1) link.
- 2.9 Marking. The markings “U.S.” shall be .25 inch minimum size and can be located on either side of the padlock.
- 2.10 Padlocks, as a minimum, shall be able to withstand the testing requirements for Grade 2 of ASTM F883 with the following exception:
- Substitute the tensile force value per ASTM F883 with 800 pound-force (lbf) for dash number 1 padlocks and 2,000 lbf for dash number 2.

A-A-59487A

3 QUALITY ASSURANCE PROVISIONS.

3.1 Product conformance. The products provided shall meet the salient characteristics of this commercial item description, conform to the producer's own drawings, specifications, standards, and the quality assurance practices, and be the same product offered for sale in the commercial market. The government reserves the right to require proof of such conformance.

4 NOTES.

4.1 Unless otherwise specified, all dimensions are in inches.

4.2 Unless otherwise specified in the contract or purchase order, packaging shall be in accordance with ASTM D3951.

4.3 In the event that the requirements of this document should conflict with ASTM F883, this document should take precedence.

* 4.4 The following part or identification numbering procedure is for government purposes and does not constitute a requirement for the contractors. The Part Identification Number (PIN) shall consist of the basic commercial item description number followed by a dash number from Table I, plus other options as specified in the example below:

AA59487 - 1 B C L

Add "L" for long shackle, omit for standard shackle

Add "C" for chain attachment

B = brass, S = steel steel (Designations "B" and "S" refer to the material to be used for both the lock body and the shackle.)

DASH NUMBER from Table I

Basic CID number

4.5 Cross-reference data. Padlock sets conforming to this CID are interchangeable/substitutable with padlock sets conforming to MS35647E dated 27 Jul 1992.

Table II. CROSS – REFERENCE TABLE FOR ACTIVE MS PIN

Cancelled MS PIN	Replacement CID PIN
MS35647-3	AA59487-1BC
MS35647-5	AA59487-1BCL
MS35647-6	AA59487-1BL
MS35647-9	AA59487-2SC
MS35647-10	AA59487-2S

A-A-59487A

- * Changes from previous issue. The margins of this specification are marked with asterisks to indicate where changes (additions, modifications, corrections, deletions) from the previous issue were made. This was done as a convenience only, and the government assumes no liability whatsoever for any inaccuracies in these notations. Bidders and contractors are cautioned to evaluate the relationship of this document based on the entire content irrespective of the marginal notations and relationship to the last previous issue.

MILITARY ACTIVITIES:

Custodian:

Army – AR

* Navy – YD

Air Force – 99

* Review activities:

Army – AV, CR, MI

Navy – MC

CIVIL AGENCY COORDINATING ACTIVITY:

GSA – FSS

Preparing activity:

DLA – IS

(Project 5340-2666)