

[INCH-POUND]  
A-A-59289  
8 April 1999  
SUPERSEDING  
MS17157A  
6 March 1963

## COMMERCIAL ITEM DESCRIPTION

### TERMINAL, STUD FEEDTHRU, DOUBLE - DOUBLE

The General Services Administration has authorized the use of this commercial item description, for all federal agencies.

1. **SCOPE.** This commercial item description covers a double-double turret, feedthru terminal stud.

#### 2. SALIENT CHARACTERISTICS

2.1 General. The terminal stud shall be a double-double turret feedthru type.

2.2 Material. The material shall be brass conforming to alloy C36000 of ASTM Standard B16, alloy C34200 or C35300 of ASTM Standard B121, or alloy C31400 of ASTM Standard B140. All alloys shall have a half-hard temper.

2.3 Interface. Dimensional requirements are contained in table I and figure 1. Dimensions are in inches, unless otherwise specified.

2.4 Workmanship. All surfaces shall be smooth and free of burrs and sharp edges.

2.5 Finish. The finish shall consist of a silver plate, Grade D, Class N (0.0003 min.) per ASTM Standard B7000, followed by a gold plate per SAE/AMS Specification 2422D (0.00043 min.), or equivalent.

Beneficial comments, recommendations, additions, deletions, clarifications, etc., and any data which may improve this document should be sent to Defense Supply Center Richmond (DSCR), 8000 Jefferson Davis Highway, Richmond, VA 23297-5610.

AMSC N/A

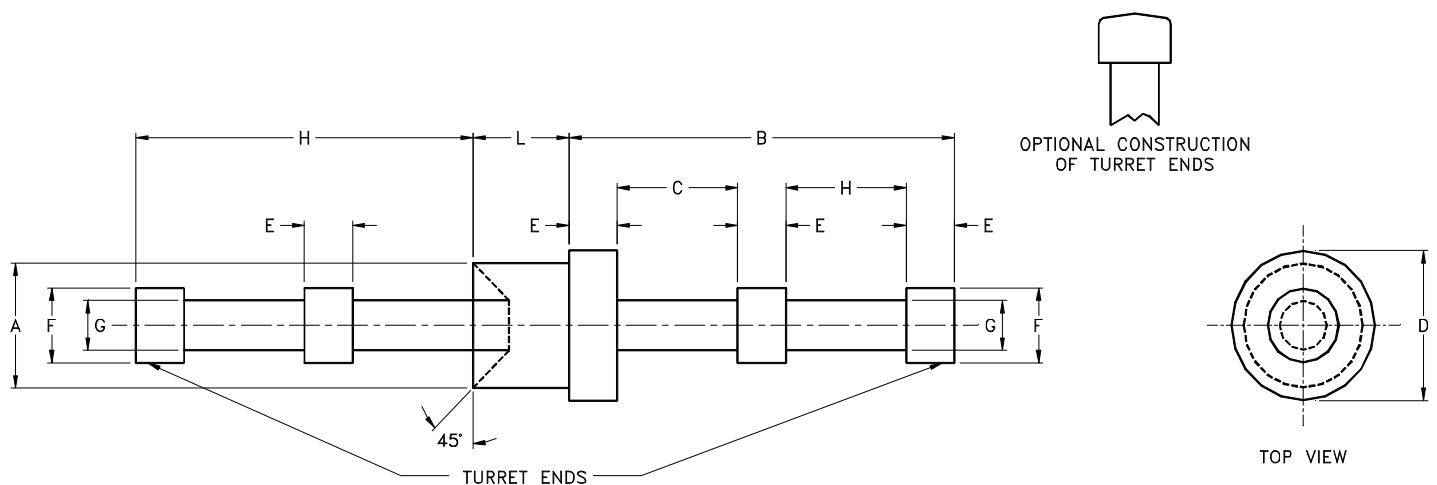
FSC 5940

DISTRIBUTION STATEMENT A. Approved for public release; distribution is not limited.

A-A-59289

TABLE I. Dimensional requirements.

Dash Number	Thickness of Mounting Board	A Dia. $\pm.002$	B $\pm.015$	C $\pm.010$	D Dia. $\pm.005$	E $\pm.005$	F $\pm.005$	G $\pm.010$	H $\pm.010$	J $\pm.010$	K $\pm.005$	L $\pm.005$
-01	1/64	.072	.186	.062	.093	.020	.050	.038	.164	.062	.062	.037
-02	1/32											.054
-03		.090	.219	.093	.125	.020	.062	.040	.187	.054	.054	.075
-04		.156	.250	.109	.187	.032	.093	.047	.218	.062	.045	.075
-05	1/16	.072	.186	.062	.093	.020	.050	.038	.164	.062	.062	.084
-06		.090	.219	.093	.125	.020	.062	.040	.287	.054	.054	.105
-07		.156	.250	.109	.187	.032	.093	.047	.218	.062	.045	.105
-08		.262	.500	.219	.312	.032	.187	.125	.437	.156	.155	.105
-09	3/32	.072	.186	.062	.093	.020	.050	.038	.104	.062	.062	.116
-10		.090	.219	.093	.125	.020	.062	.040	.187	.054	.054	.135
-11		.156	.250	.109	.187	.032	.093	.047	.218	.062	.045	.135
-12		.262	.500	.219	.312	.032	.187	.125	.437	.156	.155	.135
-13	1/8	.072	.186	.062	.093	.020	.050	.038	.164	.062	.062	.147
-14		.090	.219	.093	.125	.020	.062	.040	.187	.054	.054	.105
-15		.156	.250	.109	.187	.032	.093	.047	.218	.062	.045	.105
-16		.262	.500	.219	.312	.032	.187	.125	.437	.156	.155	.105
-17	5/32	.072	.250	.109	.187	.032	.093	.047	.218	.062	.045	.195
-18		.090	.500	.219	.312	.032	.187	.125	.437	.156	.155	.195
-19	3/16	.156	.250	.109	.187	.032	.093	.047	.218	.062	.045	.230
-20		.262	.250	.109	.187	.032	.093	.047	.218	.062	.155	.230
-21	1/4											.293

FIGURE 1. Double-double feedthru terminal stud.

### 3. REGULATORY REQUIREMENTS

There are no regulatory requirements, however, the offeror or contractor is encouraged to use recovered materials to the maximum extent practicable, in accordance with paragraph 23.403 of the Federal Acquisition Regulation (FAR).

### 4. QUALITY ASSURANCE PROVISIONS

4.1 Product conformance. The products provided shall meet the salient characteristics of this commercial item description, conform to the producer's own drawings, specifications, standards, and quality assurance practices, and be the same product offered for sale in the commercial market. The government reserves the right to require proof of such conformance.

4.2 Market acceptability. Similar items must have been sold in the commercial market or to the Government. The contractor shall certify and provide supporting documentation as to the serviceability and the long term (5 years) availability of all necessary maintenance and logistics support parts and materials.

### 5. PACKAGING

Preservation, packing, and marking shall be as specified in the contract or order.

### 6. NOTES

6.1 Part Identification Number (PIN) The following part identification numbering procedure is for government purposes and does not constitute a requirement for the contractor.

This example describes a part numbering system for CID A-A-59289.

AA59289-01

where AA59289 is the basic part number and the dash -01 references the figure 1 and Table I dimensional requirements of -01. All dash numbers of this document supercede corresponding dash numbers of MS17157.

6.2 Source of documents.

6.2.1 Source of government documents. Military and Federal documents are available from:

Standardization Documents Order Desk  
Bldg. 4D  
700 Robbins Avenue  
Philadelphia, PA 19111-5094

A-A-59289

6.2.2 Source of non-government documents. Applicable documents are available from the following:

Society of Automotive Engineers  
400 Commonwealth Drive  
Warrendale, PA 15096-0001

American Society for Testing and Materials  
1916 Race Street  
Philadelphia, PA 19103-1187

MILITARY INTERESTS:

Custodian:

Army - MI

Navy - AS

Air Force - 85

Preparing Activity:

DLA- GS

(Project 5940-1296)