

**INCH-POUND**

A-A-59287A  
 27 May 2004  
 SUPERSEDING  
 A-A-59287  
 7 April 1999

## COMMERCIAL ITEM DESCRIPTION

### TERMINAL, STUD, FEEDTHRU, SINGLE

The General Services Administration has authorized the use of this commercial item description for all federal agencies.

1. SCOPE. This commercial item description (CID) covers a single turret feedthru stud terminal.

## 2. CLASSIFICATION

2.1 The terminals shall be classified by the dash numbers listed in table I (see 7.3(b)).

TABLE I. Dimensional requirements.

Dash no.	Mounting board thickness	A Dia. ±.002	B ±.015	C ±.010	D Dia. ±.005	E ±.005	F ±.005	G ±.010	H ±.010	J ±.005	K ±.005	L ±.005
-01	1/64	.072	.104	.082	.093	.020	.050	.038	.038	.022	.050	.037
-02	1/32	.072	.104	.082	.093	.020	.050	.038	.038	.022	.050	.054
-03		.090	.133	.113	.125	.020	.062	.040	.040	.020	.062	.075
-04		.124	.158	.084	.156	.022	.093	.047	.030	.045	.062	.075
-05	1/16	.072	.104	.082	.093	.020	.050	.038	.038	.022	.050	.084
-06		.090	.133	.113	.125	.020	.062	.040	.040	.020	.062	.105
-07		.124	.158	.084	.156	.022	.093	.047	.030	.045	.062	.105
-08	3/32	.072	.104	.082	.093	.020	.050	.038	.038	.022	.050	.115
-09		.090	.133	.113	.125	.020	.062	.040	.040	.020	.062	.135
-10		.124	.158	.084	.156	.022	.093	.047	.030	.045	.062	.135
-11	1/8	.072	.104	.082	.093	.020	.050	.038	.038	.022	.050	.147
-12		.090	.133	.113	.125	.020	.062	.040	.040	.020	.062	.165
-13		.124	.158	.084	.156	.022	.093	.047	.030	.045	.062	.165

Beneficial comments, recommendations, additions, deletions, clarifications, etc. and any data that may improve this document should be sent to: STDZNMGT@dla.mil or Defense Supply Center Richmond (DSCR), ATTN: DSCR-VEB, 8000 Jefferson Davis Highway, Richmond, VA 23297-5616.

AMSC N/A

FSC 5940

DISTRIBUTION STATEMENT A. Approved for public release; distribution is unlimited.

A-A-59287A

### 3. SALIENT CHARACTERISTICS

3.1 Material. The material shall be half-hard temper brass conforming to one of the following alloys:

- a. C36000 in accordance with ASTM International B 16/B 16M, "Free-Cutting Brass Rod, Bar and Shapes for Use in Screw Machines" (DoD adopted).
- b. C34200 or C35300 in accordance with ASTM B 121/B 121M, "Leaded Brass Plate, Sheet, Strip, and Rolled Bar" (DoD adopted).
- c. C31400 in accordance with ASTM B 140/B 140M, "Copper-Zinc-Lead (Red Brass or Hardware Bronze) Rod, Bar, and Shapes" (DoD adopted).

3.2 Workmanship. All surfaces shall be smooth and free of burrs and sharp edges.

3.3 Finish. The finish shall consist of a 0.0003 inch (7.6 microns) thick (minimum) layer of silver plate in accordance with ASTM B 700, "Standard Specification for Electrodeposited Coatings of Silver for Engineering Use", Grade D, Class N, covered by a 0.000030 inch (0.76 micron) thick (minimum) layer of gold plate in accordance with Society of Automotive Engineers (SAE) AMS 2422, "Gold Plating", or equivalent.

3.4 Dimensional requirements. Dimensional requirements are as listed in table I and figure 1. Dimensions are in inches unless otherwise specified.

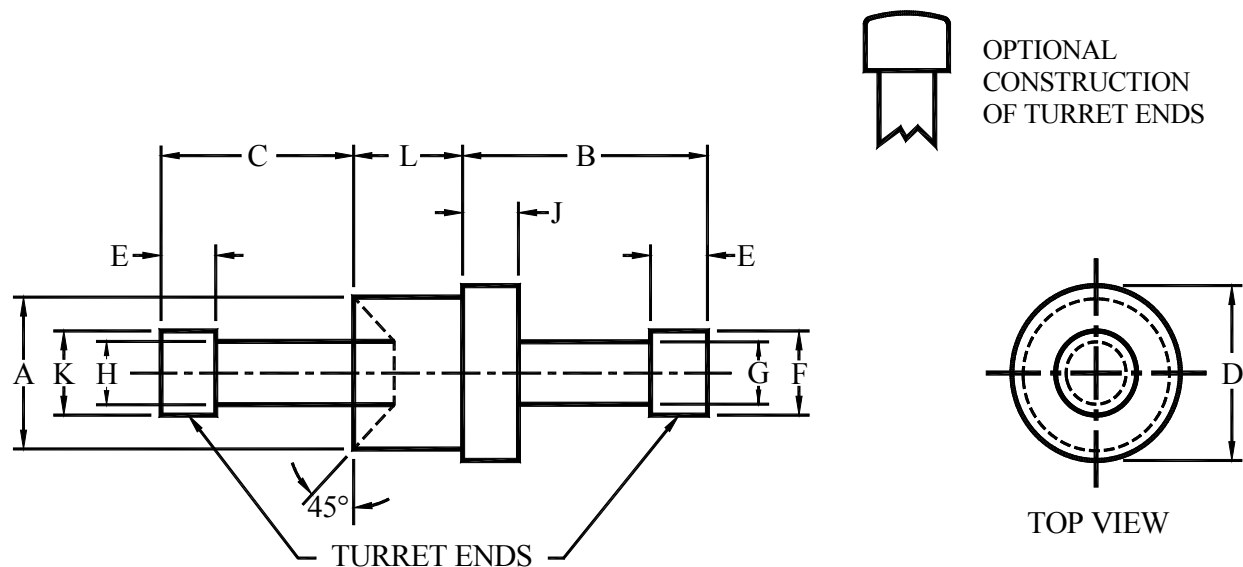


FIGURE 1. Single feedthru stud terminal.

#### 4. REGULATORY REQUIREMENTS

4.1 Recovered materials. The offeror/contractor is encouraged to use recovered materials to the maximum extent practicable, in accordance with paragraph 23.403 of the Federal Acquisition Regulation (FAR).

#### 5. PRODUCT CONFORMANCE PROVISIONS

5.1 Product conformance. The products provided shall meet the salient characteristics of this CID, conform to the producer's own drawings, specifications, standards, and quality assurance practices, and be the same product offered for sale in the commercial marketplace. The government reserves the right to require proof of such conformance.

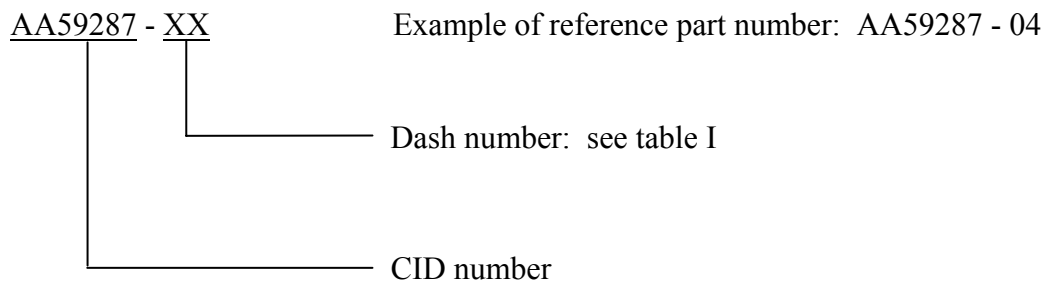
5.2 Market acceptability. The product offered must have been previously sold either to the government or on the commercial market.

#### 6. PACKAGING

6.1 Preservation, packing, and marking. Preservation, packing, and marking shall be as specified in the acquisition order (see 7.3(c)).

#### 7. NOTES

7.1 Part or identification number (PIN). The following PIN procedure is for government purposes and does not constitute a requirement for the contractor.



#### 7.2 Sources of documents.

7.2.1 FAR. The FAR may be obtained from the Superintendent of Documents, P.O. Box 371954, Pittsburgh, PA 15250-7954. Electronic copies of FAR documents may be obtained from <http://www.arnet.gov/far/>.

7.2.2 ASTM standards. Copies of ASTM standards may be obtained from ASTM International, 100 Barr Harbor Drive, P.O. Box C700, West Conshohocken, PA 19428-2959. Electronic copies of ASTM standards may be obtained from <http://www.astm.org/>.

A-A-59287A

7.2.3 SAE standards. Copies of SAE standards may be obtained from SAE International, 400 Commonwealth Drive, Warrendale, PA 15096-0001. Electronic copies of SAE standards may be obtained from <http://www.sae.org/>.

7.3 Ordering data. The acquisition order should specify the following:

- a. CID document number, revision, and CID PIN.
- b. Dash number (see 2.1).
- c. Preservation, packing, and marking (see 6.1).

7.4 Subject term (key word) listing.

brass  
gold  
silver  
turret

#### MILITARY INTERESTS:

Custodians:

Army - MI

Navy - AS

Air Force - 11

Review Activity:

Air Force - 99

#### CIVIL AGENCY COORDINATING ACTIVITY:

GSA - FSS

Preparing Activity:

DLA - GS2

(Project 5940-1485)

NOTE: The activities listed above were interested in this document as of the date of this document. Since organizations and responsibilities can change, you should verify the currency of the information above using the ASSIST Online database at [www.dodssp.daps.mil](http://www.dodssp.daps.mil).