

INCH POUND

A-A-55539  
26 February 1999  
Superseding  
MS51323C  
7 July 1982  
MS51324B  
25 Sept 1978  
MIL-C-13489D  
14 February 1985

## COMMERCIAL ITEM DESCRIPTION

### VEHICLE COVERS AND END CURTAINS

The General Services Administration has authorized the use of this Commercial Item Description (CID) for all federal agencies.

1. **SCOPE.** This CID covers the requirements for protective covers that fit on the top and ends of motor vehicle (truck) bodies. The fitted covers are contained in a single classification.

2. **CLASSIFICATION.** This CID describes a single class of covers and end curtains. The Part Identification Number (PIN) is shown in Tables 1 and 3.

3. **SALIENT CHARACTERISTICS.**

3.1 **Design.** The fitted covers shall be made in accordance to the dimensions in Tables 2 and 4 as they apply to figures 1, 2, and 3.

3.2 **Characteristics.** The fitted covers shall have the following characteristics or capabilities:

- a. Provide a protective barrier against sun, wind, water, dust and dirt for the truck body it is mounted on.
- b. Provided with a means to resist abrasion from the truck body and the mounting points and supports.
- c. Be equipped with adjustable provisions to secure the cover to the vehicle on the sides, front and rear which match the tie down or securing points on the applicable vehicle.
- d. Be equipped with provisions to roll up and secure the cover while it is mounted on the vehicle.

Beneficial comments, recommendations, additions, deletions, clarifications, etc., and any data which may improve this document should be sent to: Defense Supply Center, Columbus, ATTN: DSCC-VSS, Box 3990, Columbus, OH 43216-5000.

FSC 2540

A-A-55539

- e. Be the color specified in the purchase order.
- f. Be constructed of 19 to 22 ounce material treated to repel water.
- g. Be made to the dimensions in tables 2 and 4 as they pertain to figures numbers 1, 2 and 3.
- h. Be marked to indicate which end goes on the front of the intended vehicle.
- i. Be marked with the manufacturer's part number on the inside cover or end curtain.

#### 4. REGULATORY REQUIREMENTS.

4.1 Recovered Materials. The offeror/contractor is encouraged to use recovered materials to the maximum extent practicable, in accordance with paragraph 25.403 of the Federal Acquisition Regulation (FAR).

#### 5. QUALITY ASSURANCE PROVISIONS.

5.1 Product Conformance. The products provided shall meet the salient characteristics of this CID, conform to the producer's own drawings, specifications, standards, and quality assurance practices, and be the same product offered for sale in the commercial market. The Government reserves the right to require proof of such conformance.

5.2 Market Acceptance. The following market acceptance criteria are necessary to document the quality of the product provided under this CID.

- a. The company producing the item shall have at least 5 years of previous experience providing a product that meets the general characteristics of the CID.
- b. The company shall have sold at least 50 similar commercial truck or trailer covers in the last two procurement years.
- c. The company shall have a current commercial product line that will support the delivery of items described in the CID.

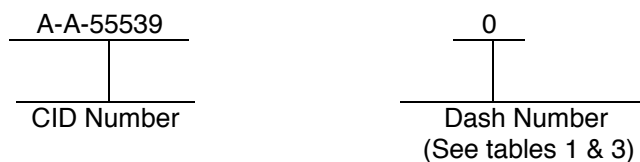
#### 6. PACKAGING.

6.1 Preservation, Packing and Marking. Preservation, packing and marking shall be as specified in the contract or order.

#### 7. NOTES

7.1 Part Identification Number (PIN). The following part identification numbering procedure is for government purposes and does not constitute a requirement for the contractor. Users should refer to tables 1 and 3 to cross check the NSN, PIN and CID dash number.

This example describes a part numbering system for CID A-A-55539.



7.1.1 The dash number appears in the upper row in tables 2 and 4. Users may select the appropriate size of cover by referencing the dimensions of tables 2 and 4 to their requirement. The drawings describe the dimensional location of the components listed in tables 2 and 4. Example: The PIN for the cover relating to NSN 2540-00-741-1556 is A-A-55539-006.

7.2 Commercial Products. This CID was coordinated with the following manufactures of commercial tarps and covers. The manufacturers were known to have commercial products that would meet the requirements of the CID. This information should not be considered as a list of approved manufacturers or be used to restrict procurement to only the manufacturers shown.

| <u>Manufacturer's name and address</u>   | <u>Manufacturer's CAGE</u> |
|--|----------------------------|
| Weckworth Mfg. Inc.<br>1806 W 2 <sup>nd</sup> St.<br>Wichita, KS 67203<br>(316) 263-3286 | 9J595                      |
| Roose-Bezuyen<br>4422 E University, St.<br>Phoenix, AZ 85034<br>(602) 921-2811           | 0PDU2                      |
| Production Products Inc.<br>1285 Dunn Rd.<br>St. Louis, MO 63138<br>(314) 868-3500       | 3S151                      |
| John Johnson Co.<br>1481 14 <sup>th</sup> St.<br>Detroit, MI 48216<br>(313) 496-0600     | 56101                      |
| D C Humphry Co.<br>5744 Woodland Ave.<br>Philadelphia, PA 19143<br>(215) 724-8181        | 2H635                      |
| Ehmke Mfg. Co.<br>5155 Belfield Ave.<br>Philadelphia, PA 19144<br>(215) 849-1166         | 9G536                      |
| C R Daniels Inc.<br>3451 Ellicott Ctr. Dr.<br>Ellicott City, MD 21043<br>(410) 461-2100  | 15814                      |

A-A-55539

Breton Industries  
 1 Sam Straton Rd.  
 Amsterdam, NY 12010  
 (518) 842-3030

54799

7.3 Material Information. Materials meeting the government's performance requirements are described in MIL-PRF-32002A, dated 5 September 1997.

Table 1. Currently procured vehicle top covers

| Dash No. | NSN              | Military Part Number | CID Part Number |
|----------|------------------|----------------------|-----------------|
| 6        | 2540 00 741 1556 | 2014122-1            | A-A-55539-006   |
| 26       | 2540 00 770 3429 | 7392938              | A-A-55539-026   |
| 27       | 2540 00 740 9679 | 2018842-1            | A-A-55539-027   |
| 28       | 2540 00 741 6338 | MS51323-28           | A-A-55539-028   |
| 30       | 2540 00 522 9060 | 7085460              | A-A-55539-030   |

7.4 Sources for Referenced Document. MIL-PRF-32002A and the FAR may be obtained from the Standardization Document Order Deck, 700 Robbins Ave, Bldg 4D, Philadelphia, PA 19111-5094, Telephone 800-225-3842

Table 2. Vehicle top cover size to cross reference list

| DASH NO.              | 6      | 26     | 27     | 28     | 30     |
|-----------------------|--------|--------|--------|--------|--------|
| DIMENSIONS $\pm 1/8"$ |        |        |        |        |        |
| A Body Length         | 176    | 273    | 197    | 176    | 238    |
| B Body Width          | 168    | 176    | 176    | 176    | 200    |
| ROPES                 | 12     | 20     | 14     | 12     | 16     |
| C                     | 5 1/2  | 5 1/2  | 5 1/2  | 5 1/2  | 5 1/2  |
| D                     | 13 1/2 | 12 1/2 | 14     | 13 1/2 | 16 1/4 |
| E                     | 29     | 23 7/8 | 25 1/2 | 27 5/8 | 25     |
| F                     | 36     | 29 3/8 | 33     | 35 1/4 | 34     |
| G                     | 36     | 29 3/8 | 33     | 36 1/4 | 41 1/4 |
| H                     | 36 1/2 | 29 3/8 | 33     | 37 7/8 | 37 3/4 |
| J                     | -----  | 35 1/2 | 33 1/2 | -----  | 34     |
| K                     | -----  | 29 3/8 | -----  | -----  | 32     |
| L LAST TO END         | 19 1/2 | 19 1/8 | 19 1/2 | 20     | 20 3/4 |
| M DRAW ROPE           | 60     | 60     | 60     | 72     | 60     |
| MR DRAW ROPE          | 60     | 60     | 60     | 72     | 60     |
| NO. BOW PADS          | 10     | 20     | 12     | 10     | 14     |
| N LAST TO END         | 16     | 15 3/4 | 16     | 16     | 16     |
| P                     | -----  | 29 3/8 | -----  | -----  | 33 3/4 |
| R                     | -----  | 6      | 33     | -----  | 34     |
| S                     | 36     | 29 3/8 | 33     | 36     | 37 3/4 |
| T                     | 36     | 29 3/8 | 33     | 36     | 33 3/4 |
| U                     | 36     | 29 3/8 | 33     | 36     | 34     |
| W                     | 36     | 29 3/8 | 33     | 36     | 33 3/4 |
| Y                     | 16     | 16     | 16     | 16     | 16     |
| Z                     | 35 7/8 | 39 7/8 | 39 7/8 | 39 7/8 | 39 7/8 |
| AE                    | 8      | 8      | 8      | 8      | 8      |
| AF                    | 33     | 29     | 29     | 33     | 41     |
| AG                    | 5/8    | 1 3/4  | 1 3/4  | 5/8    | 5/8    |
| AH                    | 24     | 24     | 24     | 24     | 24     |
| AJ                    | 14     | 14     | 14     | 14     | 14     |
| AK                    | 2 1/2  | 2 1/4  | 2 1/4  | 2 1/4  | 2 1/4  |
| AL                    | 3 3/4  | 3 1/2  | 3 1/2  | 3 3/4  | 3 1/2  |
| AM                    | 5/8    | 5/8    | 5/8    | 5/8    | 5/8    |
| AN                    | 1/8    | 1/4    | 1/4    | 1/8    | 1/4    |
| AP                    | 3 1/8  | 3      | 3      | 3 1/8  | 3      |

A-A-55539

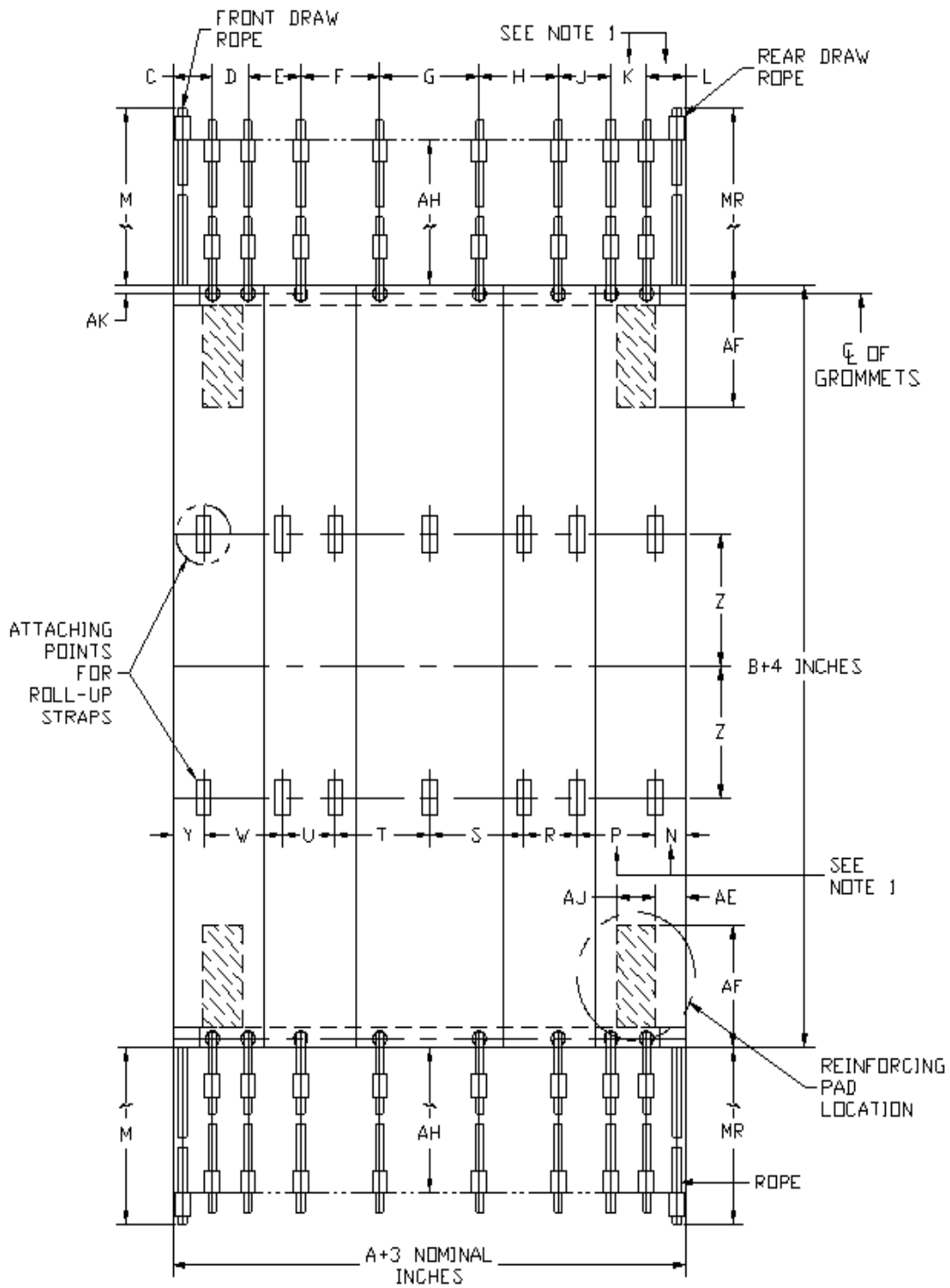
Table 3. Currently procured end curtains

| Dash No. | NSN              | Military Part Number | CID Part Number |
|----------|------------------|----------------------|-----------------|
| 4        | 2540-00-860-0516 | MS51324-4            | A-A-55539-4     |
| 16       | 2540-00-402-2157 | MS51324-16           | A-A-55539-16    |
| 18       | 2540-00-741-6339 | MS51324-18           | A-A-55539-18    |
| 20       | 2540-00-522-9061 | MS51324-20           | A-A-55539-20    |

Table 4. Vehicle end curtain size to cross reference list

| Dash No.               | 4      | 16     | 18     | 20     |
|------------------------|--------|--------|--------|--------|
| Dimensions $\pm 1/8$ " |        |        |        |        |
| A                      | 51-1/2 | 51-1/2 | 51-1/2 | 63-1/2 |
| B                      | 83-3/8 | 90-3/8 | 90-3/8 | 90-3/8 |
| C                      | 26-1/8 | 30-1/8 | 26-1/2 | 26-1/2 |
| D                      | 26     | 22-1/2 | 18     | 18     |
| E ROPE                 | 276    | 276    | 292    | 316    |
| F                      | 120    | 136    | 120    | 120    |
| G                      | 10     | 10     | 10     | 11-1/4 |
| J                      | 10-3/4 | 11-1/8 | 11-1/4 | 11-1/4 |

Figure 1  
Fitted vehicle cover



A-A-55539

Figure 2  
Fitted vehicle cover detail

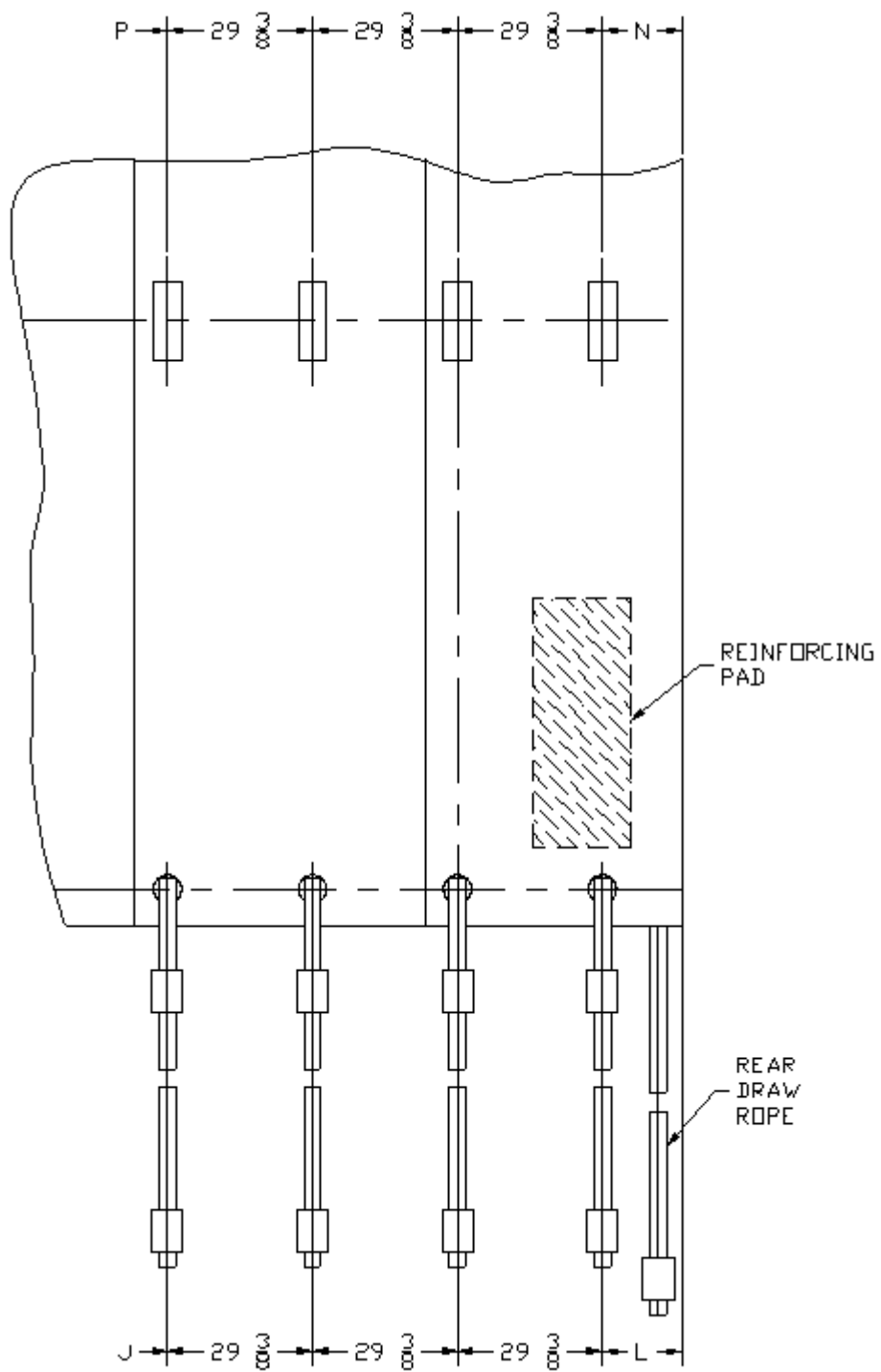
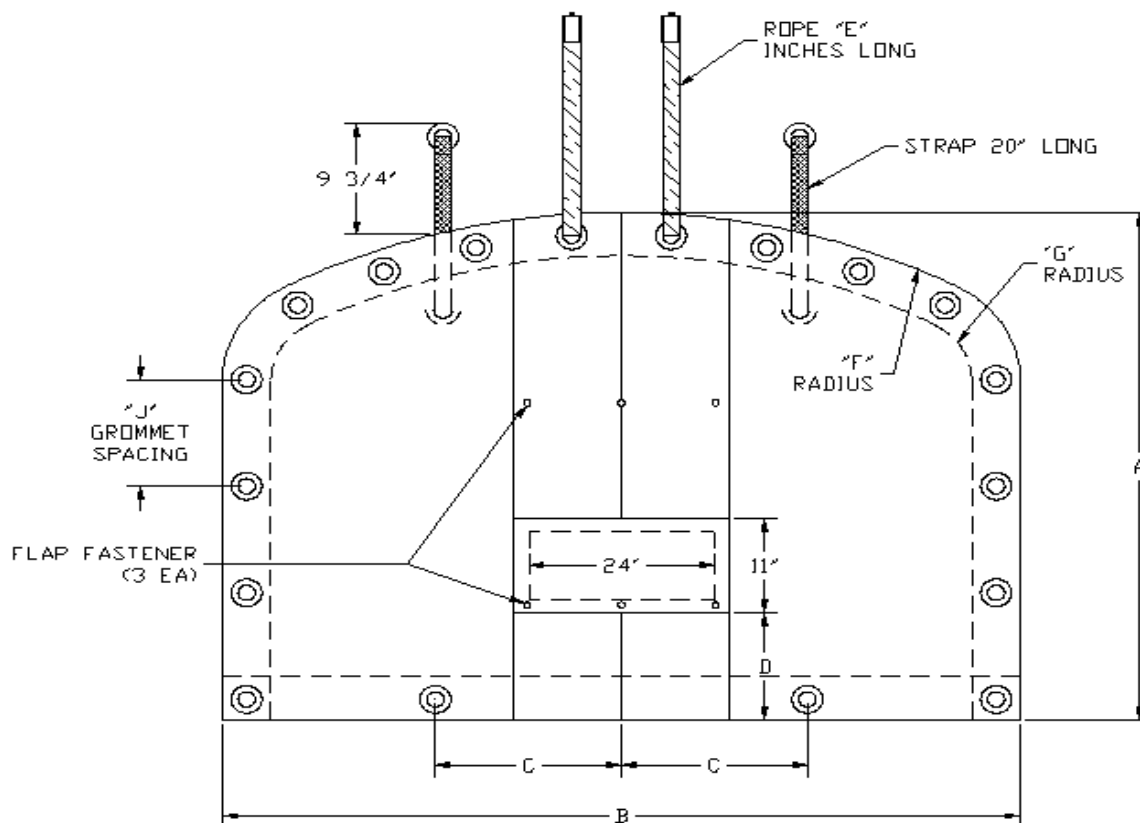




Figure 3  
Curtain, vehicular: end



#### MILITARY INTEREST

Custodians:  
Army - AT  
Air Force - 99

Preparing activity:  
DLA - CC

(Project No. 2540-0451)

Review activities:  
Air Force - 84