

A-A-55465A  
 August 12, 1994  
 SUPERSEDING  
 A-A-55465  
 October 1, 1993

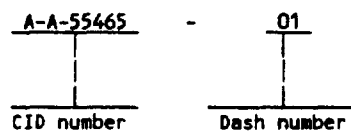
COMMERCIAL ITEM DESCRIPTION

CONNECTORS, ELECTRICAL, POWER, SAFETY SHIELD,  
 CLAM SHELL

The General Services Administration has authorized  
 the use of this commercial item description (CID)

**Abstract** This CID covers the general requirements for connector, electrical, power, safety shield. This shield can be used in applications that require crimp to discrete stranded wires, size 14 AWG through 24 AWG. Shields covered by this CID are intended for commercial/industrial applications and shall not be used in military systems needing stringent environmental and electrical requirements.

**Part or Identifying Number (PIN)** The PIN for the CID shall be as shown in the following example:



**Salient characteristics**

**CID sheet** The electrical connectors shall be in accordance with the requirements specified herein.

**Design, construction, and dimensions** Design, construction, and dimensions shall be as specified on figure 1 and table I.

**Clam shell housings** Clam shell housings shall be molded from a nylon material UL 94V-0 brick red for high impact and dielectric strength.

**Operating temperature** The operating temperature range shall be from -55°C to +105°C.

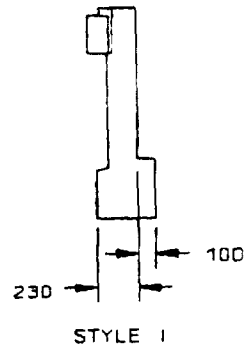
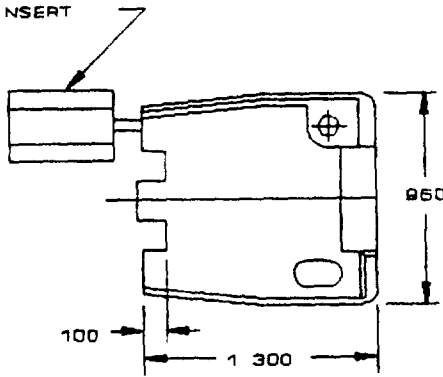
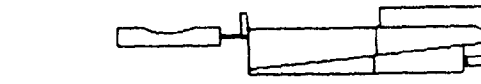
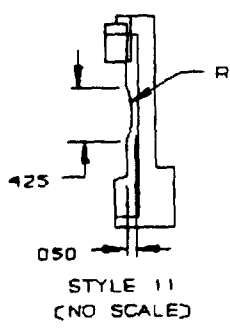
TABLE I Dimensions and configuration

Figure 1, configuration	Dash number A-A-55465-		Number of circuits	Wire bundle diameter range
	Style I	Style II 1/		
A	01	07	2	.040 - .190 (1.02 - 5.03)mm
B	---	08	3	.040 - .190 (1.02 - 5.03)mm
C	02	09	4	.040 - .190 (1.02 - 5.03)mm
D	03	---	6	.120 - .650 (3.05 - 16.51)mm
E	04	---	9	.120 - .650 (3.05 - 16.51)mm
F	05	---	12	.150 - .750 (3.81 - 19.05)mm
G	06	---	15	.200 - .850 (5.08 - 21.59)mm

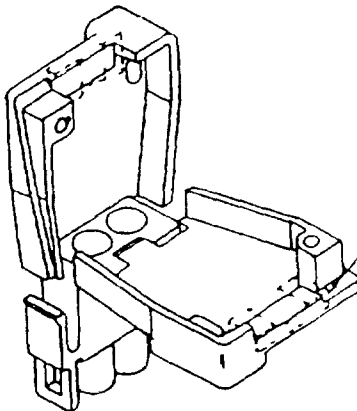
1/ Style II does not include insert.

A-A-55465A

STYLE II DOES NOT INCLUDE INSERT



NO 6 X 375 LG TYPE B (2 REOD)  
PAN HEAD SHEET METAL SCREWS  
SHEET METAL SCREWS NOT SUPPLIED

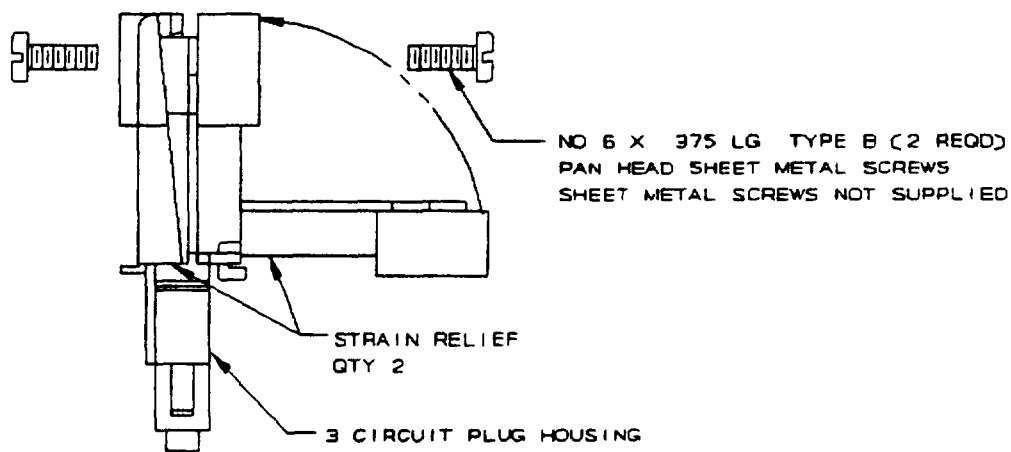
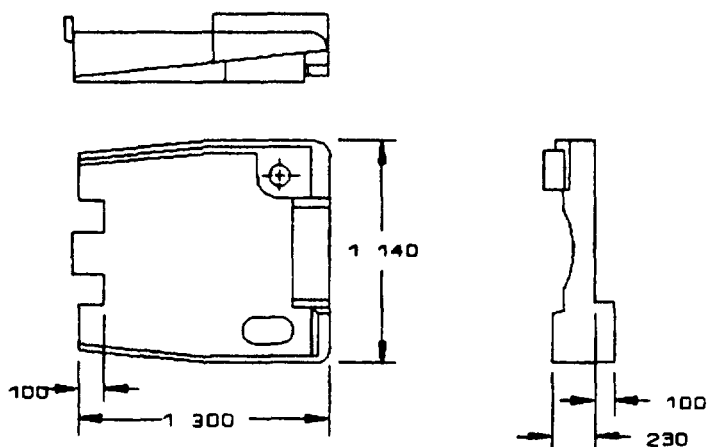


INSERT IS ATTACHED TO STRAIN RELIEF AS AN  
ADDITIONAL ADJUSTMENT FOR SMALL WIRE BUNDLES.  
IT SHOULD BE CUT OFF AND POSITIONED AS SHOWN  
BY DOTTED LINES STYLE II DOES NOT INCLUDE INSERT



Configuration A

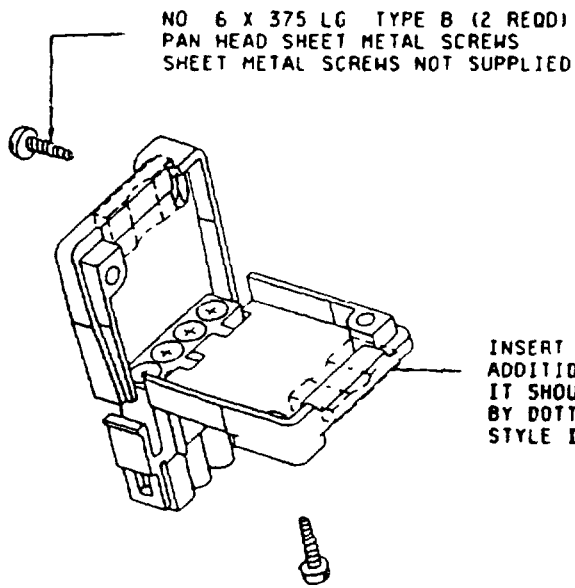
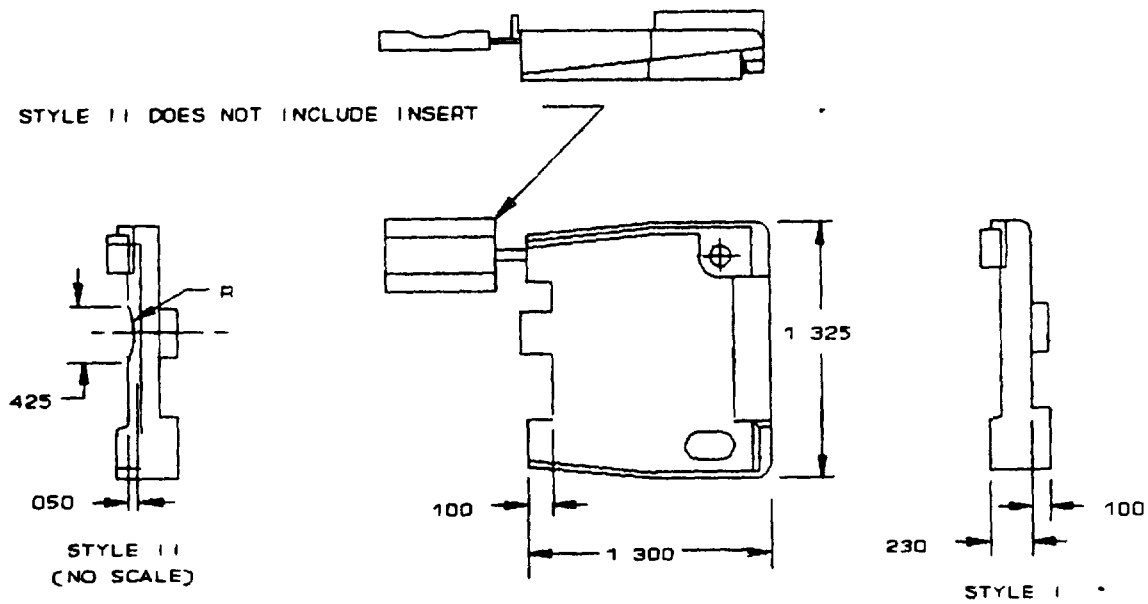
Figure 1 Dimensions and configurations



Configuration B

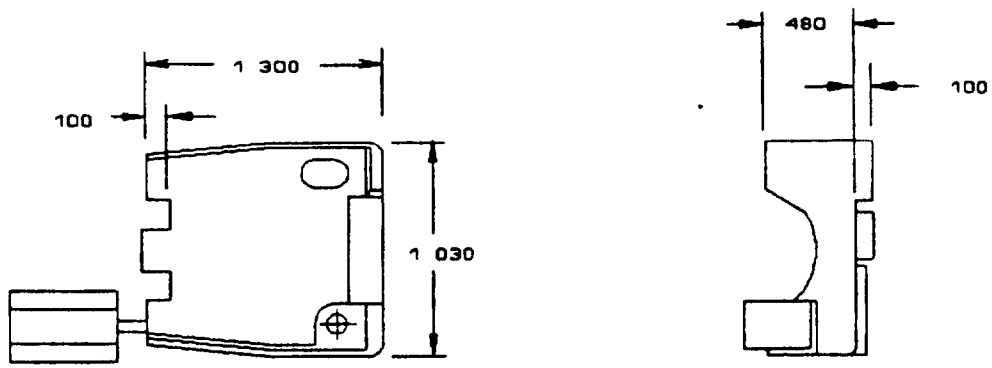
Figure 1. Dimensions and configurations - Continued

A-A-55465A

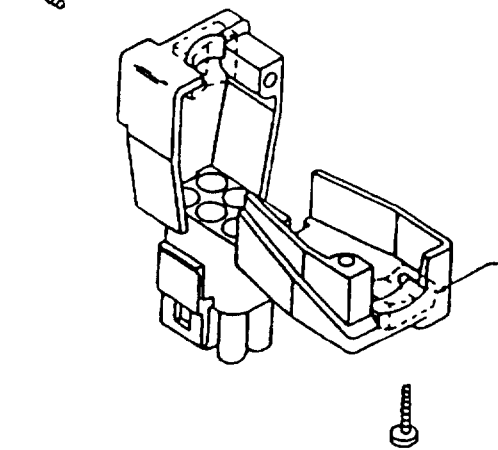


Configuration C

Figure 1 Dimensions and configurations - Continued



NO 6 X 625 LG TYPE 8 12 REOD1  
PAN HEAD SHEET METAL SCREWS  
SHEET METAL SCREWS NOT SUPPLIED

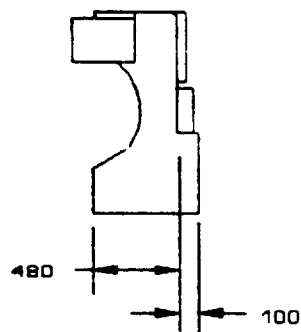
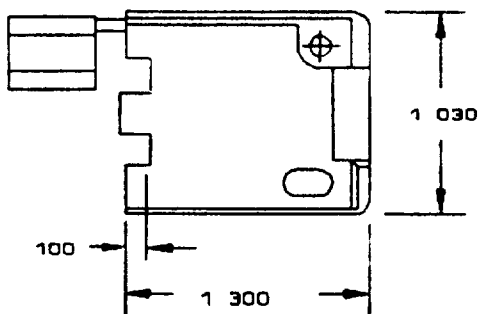
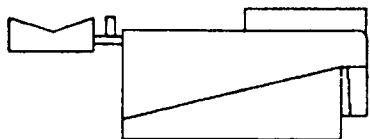


INSERT IS ATTACHED TO STRAIN RELIEF AS AN ADDITIONAL  
ADJUSTMENT FOR SMALL WIRE BUNDLES. IT SHOULD BE CUT  
OFF AND POSITIONED AS SHOWN BY DOTTED LINES

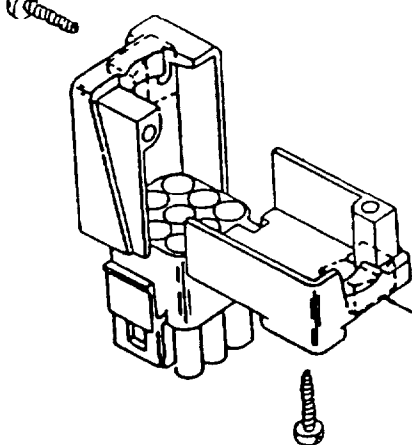
Configuration D

Figure 1. Dimensions and configurations - Continued.

A-A-55465A



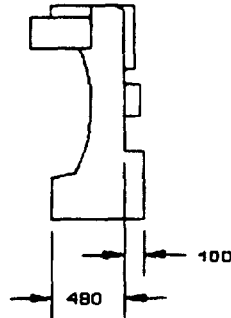
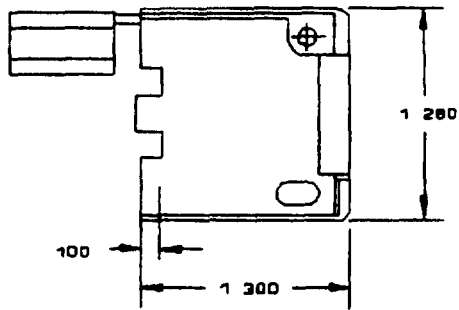
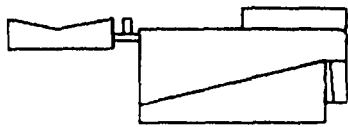
NO 6 X 625 LG TYPE 8 (2 REOD)  
PAN HEAD SHEET METAL SCREWS.  
SHEET METAL SCREWS NOT SUPPLIED



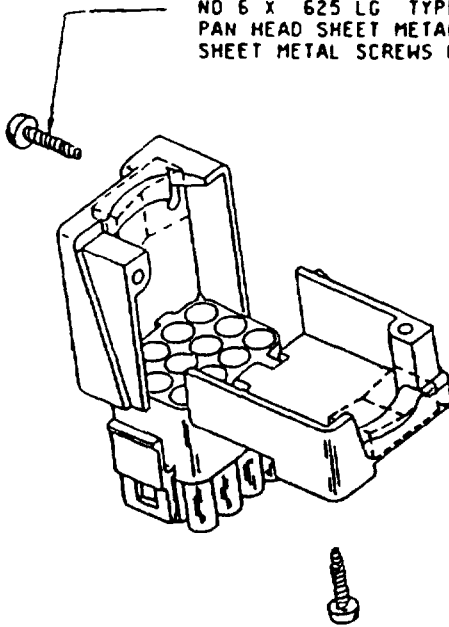
INSERT IS ATTACHED TO STRAIN RELIEF. AS AN ADDITIONAL  
ADJUSTMENT FOR SMALL BUNDLES, IT SHOULD BE CUT OFF AND  
POSITIONED AS SHOWN BY DOTTED LINES

Configuration E

Figure 1. Dimensions and configurations - Continued



NO 6 X 625 LG TYPE B (2 REQD)  
PAN HEAD SHEET METAL SCREWS  
SHEET METAL SCREWS NOT SUPPLIED

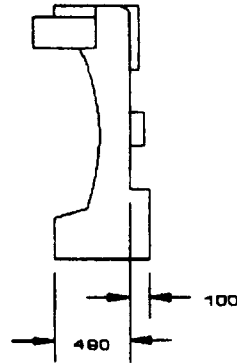
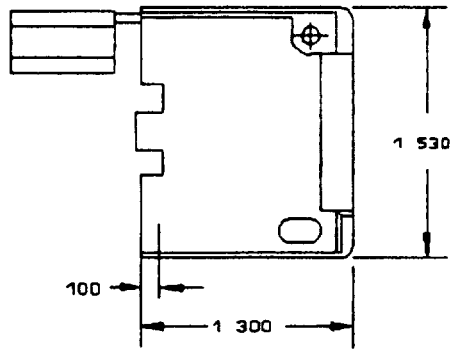
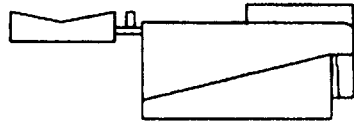


INSERT IS ATTACHED TO STRAIN RELIEF AS AN ADDITIONAL  
ADJUSTMENT FOR SMALL WIRE BUNDLES. IT SHOULD BE CUT  
OFF AND POSITIONED AS SHOWN BY DOTTED LINES

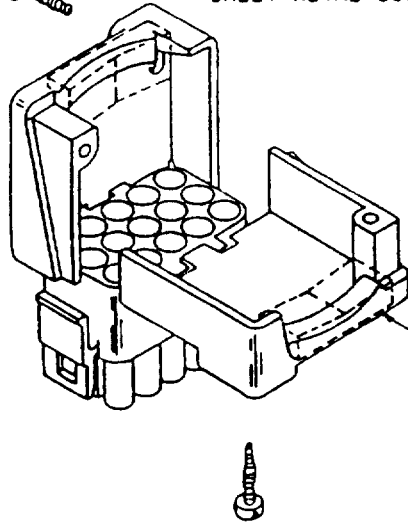
Configuration F

Figure 1. Dimensions and configurations - Continued

A-A-55465A



NO 6 X 625 LG TYPE B (2 REOD)  
PAN HEAD SHEET METAL SCREWS  
SHEET METAL SCREWS NOT SUPPLIED



INSERT IS ATTACHED TO STRAIN RELIEF AS AN ADDITIONAL  
ADJUSTMENT FOR SMALL WIRE BUNDLES, IT SHOULD BE CUT  
OFF AND POSITIONED AS SHOWN BY DOTTED LINES

Configuration 6

Figure 1. Dimensions and configurations - Continued



mm	Inches
1.27	.050
2.54	.100
5.84	.230
9.53	.375
10.80	.425
12.19	.480
15.88	.625
24.38	.960
26.16	1.030
28.96	1.140
32.51	1.280
33.02	1.300
33.66	1.325
38.86	1.530

## NOTES:

- 1 Dimensions are in inches
- 2 Millimeters are in parentheses
3. Unless otherwise specified tolerances shall be  $\pm 0.15$  inch (0.38 mm)
- 4 This item was designed using inch-pound units of measurement. In case of problems involving conflicts between the metric and inch-pound units, the inch-pound units shall rule.
- 5 The insert is attached to the strain relief and is used to provide additional adjustment for small wire bundles or it is discarded.
- 6 Pictorial representations are for reference purposes only.
- 7 Two pan head sheet metal screws are required for assembly, no. 6 x .375 long, not supplied.
- 8 Detachable insert may separate from strain relief body during shipping.
9. Two strain reliefs are required per connector.

Figure 1 Dimensions and configurations - Continued

A-A-55465A

Regulatory requirements This section is not applicable to this CID

Quality assurance provisions

Responsibility for inspection Unless otherwise specified in the contract or purchase order, the contractor is responsible for the performance of all inspection, examination, and test requirements specified herein. Except as otherwise specified in the contract or purchase order, the contractor may use his own or any other facilities suitable for the inspection requirements specified herein, unless disapproved by the Government. The Government reserves the right to perform any of the inspections, examinations, or tests set forth in this description where such inspections, examinations, and tests are deemed necessary to assure supplies and services conform to prescribed requirements.

Contractor certification statement The contractor shall certify and maintain objective quality evidence that the product offered meets the requirements of this CID, and that the product conforms to the producer's own drawings, specifications, standards, quality assurance practices, and is the same as the product provided as a bid sample. The Government reserves the right to require proof of such conformance prior to the first delivery and thereafter as may be otherwise provided for under the provisions of the contract.

Certificate of compliance. A certificate of compliance must be supplied with all parts supplied to this ID

Packaging

Preservation, packaging, packing, labeling, and marking Preservation, packaging, labeling, and marking shall be as specified in the contract or purchase order.

Notes This section contains relevant information which is useful to buyers, users and suppliers in the process of procuring the item, but is not mandatory

Ordering data (see table II) Acquisition documents should specify the following

- a. CID document number and revision and CID PIN
- b. Quality assurance provisions
- c. Packaging requirements
- d. Color (if applicable)

Comments Comments on this CID should be directed to Defense Electronics Supply Center, 1507 Wilmington Pike, ATTN: DESC-ELDI, Dayton, OH 45444-5270, or telephone (513) 296-5391

Sources of supply. A suggested source of supply is listed in table II. Additional sources will be added as they become available

TABLE II Ordering data

Suggested sources of supply				
CID PIN A-A-55465- 1/	Vendor commercial PIN	CID PIN A-A-55465- 1/	Vendor commercial PIN	Vendor CAGE number
Style I		Style II (no insert)		
01	640713-1	07	640713-2	00779
--	---	08	641945-1	00779
02	641776-1	09	641776-2	00779
03	640715-1	---	---	00779
04	640716-1	---	---	00779
05	640717-1	---	---	00779
06	640718-1	---	---	00779

1/ Two PIN's are required for one connector

Vendor CAGE  
number

00779

Vendor name  
and address

AMP, Incorporated  
P O Box 3608  
Harrisburg, PA 17105-3608

CIVIL AGENCY COORDINATING ACTIVITY

GSA - 7FXE

PREPARING ACTIVITY

DLA-ES

(Project 5935-D522)