

INCH-POUND

A-A-55314

December 03, 1997

COMMERCIAL ITEM DESCRIPTION

JERSEY, REVERSIBLE

The General Service Administration has authorized the use of this commercial item description in preference to MIL-J-43967.

1. SCOPE. This commercial item description covers the requirements for a reversible jersey in two (2) types. The jersey is intended for use by personnel of the Department of Defense.

2. CLASSIFICATION

2.1 The reversible jersey shall be in the following types:

- a. Type I: The reversible jersey shall match Black shade number 421 on the outside and Gold shade number 422 on the inside.
- b. Type II; The reversible jersey shall match Navy shade number 3378 on the outside and Yellow shade number 3512 on the inside.

3. SALIENT CHARACTERISTICS

3.1 Description. The 100% cotton jersey shall be a pullover type with a collarette and short sleeves. The body of the jersey shall consist of two layers of fabric to result in a reversible style. Any commercially acceptable thread shall be used providing that it has a minimum breaking strength of 1.5 pounds when tested in accordance with ASTM D5034. The color of the thread shall approximate the Black 421 knitted cloth for Type I and Navy 3378 knitted cloth for Type II. The cloth for the body and collarette shall be a jersey knit, single or 2-ply carded cotton yarn, circular knit with a flat jersey stitch. As a alternate, the collarette shall be a rib knit cloth constructed from single or 2-ply carded cotton yarn, circular, 1x1 rib knit. The basic material shall conform to the requirements in Table I.

Beneficial comments, recommendations, additions, deletions, clarifications, etc. and any data which may improve this document should be sent to: Defense Personnel Support Center, Clothing and Textiles Directorate, Attn.: DPSC-FNS 2800 South 20th Street, Philadelphia, PA 19145-5099.

AMSC N/A

FSC 8415

DISTRIBUTION STATEMENT A. *Approved for public release; distribution is unlimited.*

A-A-55314

TABLE I. - Requirements

Characteristics	Physical Requirements (min)		Test Method
	Jersey Knit	Ribbed Knit	
Wales per inch	29	19	ASTM D3887
Courses per inch	35	25	ASTM D3887
Bursting strength (pounds)	50	120	ASTM D3787
Weight	----	8.0	ASTM D3776
Colorfastness: Laundering Light Perspiration Crocking	Grade 4 Grade 4 Grade 4 Grade 4		AATCC 61-TEST 3A AATCC 16-Option A AATCC 15 AATCC 8
Dimensional stability (length/width)	12.0 percent, maximum		AATCC 135 <u>1/</u>

1/ Jerseys shall not be moistened or pressed before measuring. Measurements shall be taken to the nearest 0.1 of an inch with jerseys laid flat as shown on figure 1 and 2. Shrinkage or elongation shall be reported to the nearest 0.1 of a percent. Elongation shall reported prefixed with a (-) sign.

3.2 Finished measurements and weights. The finished measurements and weights shall conform to the requirements in Tables II and III.

NOTE: The sizes may be abbreviated as XSM, S, M, LG, and XXLG.

TABLE II. Finished measurements(inches)

Sizes	1/2 Chest (A)	Length (B)	Sleeve Underarm (C)	Armhole Length (Flat) (D)	Sleeve Opening (E)	Neck Opening (F)
X-Small (30-32)	15	27	6	8-1/2	6	18
Small (34-36)	17	28	6-1/2	9	7	18-1/2
Medium (38-40)	19	29	6-1/2	10-1/2	7-3/4	19
Large (42-44)	21	30-1/2	6-1/2	10-1/2	7-3/4	20
X-Large (46-48)	23	32	7-1/2	11	8-1/4	20
XX-Large (50-52)	25	33	7-1/2	11-1/2	8-1/2	20
Tolerance	+/-1/2	+/-1/4	+/-1/4	+/-1/4	+/-1/4	+/-1/4

A. 1/2 Chest. Measure from folded edge to folded edge of the body at a point 5 inches below armpit.

B. Length. Measure on a straight line from the junction of the shoulder and collarete seams to bottom edge of jersey.

C. Underarm sleeve length. Measure on a straight line from the junction of the bottom of the armhole and top of the side, along the bottom of the sleeve to the bottom of sleeve opening.

D. Armhole. Measure from the junction of the shoulder and top of armhole and sleeve seams along armhole sleeve joining seam to bottom of armhole.

E. Sleeve opening. Measure along bottom edge of sleeve from edge to folded edge.

A-A-55314

F. Neck opening. Neck opening shall be measured by grasping collarete at center back and center front, forming a straight line and measuring.

NOTE: Refer to Figures 1 and 2 for A, B, C, D, E, and F measurements.

TABLE III. Weight per dozen, (min.)

Size (Conditioned Jersey)	Requirements		Test Method
	Pounds	Ounces	
X-Small	4	7	<u>1/</u>
Small	5	7	<u>1/</u>
Medium	6	2	<u>1/</u>
Large	7	0	<u>1/</u>
X-Large	8	0	<u>1/</u>
XX-Large	8	14	<u>1/</u>

1/ Twelve jerseys of each size shall be allowed to reach equilibrium under standard conditions. Upon reaching equilibrium, each size (one dozen) shall be weighed as a unit under standard conditions and results reported to nearest 1 ounce (see 5.1).

3.3 Labels. A commercial-type label is acceptable, provided that an additional printed cloth label containing the contractor's name, contract number, size and National Stock Number (NSN) is caught on the stitching of the commercial label. The commercial label shall include fiber and laundering information. The care instructions shall read as follows:

CARE INSTRUCTIONS

HAND OR MACHINE WASH IN COLD WATER
OR WARM WATER (MAX.110°F)
DO NOT BLEACH. TUMBLE DRY AT
REGULAR COTTON SETTING.
WASH AND DRY EACH JERSEY SEPARATELY

3.4 Label/tag. Each item shall be individually bar-coded. The bar coding element shall be a 13 digit national stock number (NSN). The bar code type shall be a medium to high code density and shall be located so that it is completely visible on the item when it is folded and/or packaged as specified and so that it causes no damage to the item.

3.5 Patterns. The jersey shall be made from the contractor's own patterns such that the jersey will conform to the finished measurements in Table II.

3.6 Figure. Figures 1 and 2 are furnished for information purposes only. When inconsistencies exist between the written commercial item description and the figures, the written commercial item description shall govern.

4. REGULATORY REQUIREMENTS. The offeror/contractor is encouraged to use recovered materials to the maximum extent practicable, in accordance with paragraph 23.403 of the Federal Acquisition Regulation (FAR).

5. QUALITY ASSURANCE PROVISIONS

5.1 Product conformance. The products provided shall meet the salient characteristics of this commercial item description, conform to the producer's own standards and quality assurance

A-A-55314

practices, and be the same product offered for sale in the commercial market. The Government reserves the right to require proof of such conformance.

5.2 Warranty. The item offered shall include the standard warranty given to the commercial market beginning with the date of delivery of the individual items.

5.3 Visual examination. Each jersey shall be examined for the following defects: Any hole, cut, or tear; any part shaded; any spot or stain (outside); raw edges, open seams, thread ends not removed, or loose tension resulting in loose seams; any material defects, distorted parts or poor workmanship; color not as specified; any component part omitted; label missing, incorrect, or illegible; measurement of item not as specified; bar code omitted or not readable by scanner; human-readable interpretation (HRI) omitted or illegible; bar code not visible on folded, packaged item; bar code causes damage to the item; any items not packaged in accordance with the contract or purchase order.

6. Preservation, packing, and marking. The preservation, packing, and marking shall be as specified in the contract or order.

7. NOTES

7.1 Source of Government documents. Copies of military and Federal documents are available from:

Standardization Documents Order Desk
Bldg. 4D
700 Robbins Avenue, Bldg. 4D
Philadelphia, PA 19111-5094

7.1 Source of non-Government documents

ASTM Test Methods

(Applications for copies should be addressed to American Society For Testing and Materials, 1916 Race Street, Philadelphia, PA 19103-1187.)

AATCC Test Method

(Applications for copies should be addressed to American Association of Textile Chemists and Colorists (AATCC), PO Box 12215, Triangle Park, NC 27709-2215.)

7.2 Standard sample. The standard sample for shades Black 421, Gold 422, Navy 3378 and Yellow 3512 can be acquired from the procuring activity.

MILITARY INTERESTS:

Custodians
Navy - NU

CIVIL AGENCY COORDINATING ACTIVITY:
GSA - FSS

PREPARING ACTIVITY:
DLA - CT

Project 8415-0887

A-A-55314

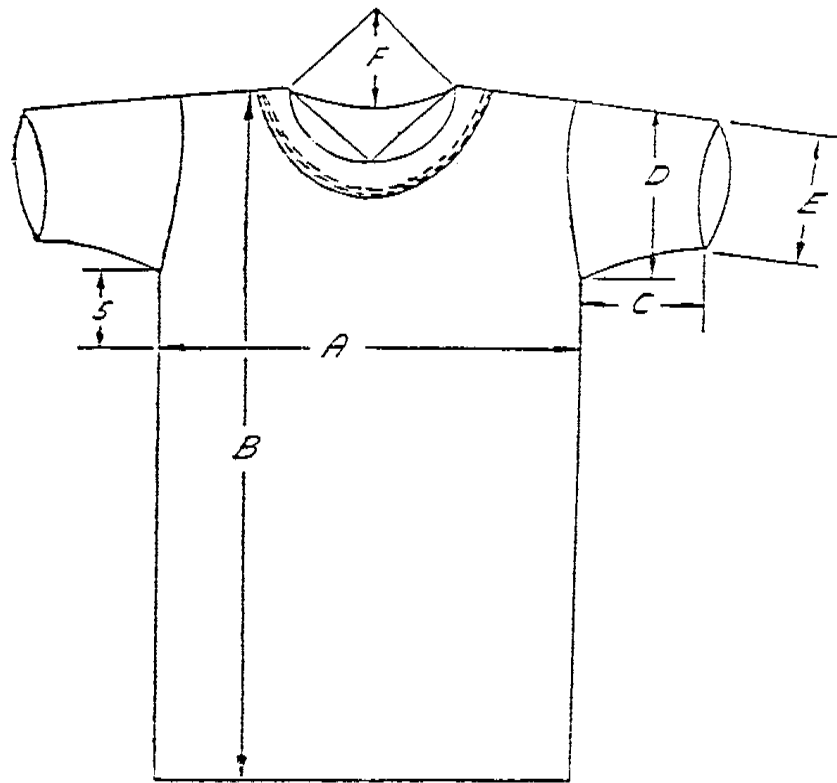


FIGURE 1 - JERSEY, REVERSIBLE

A-A-55314

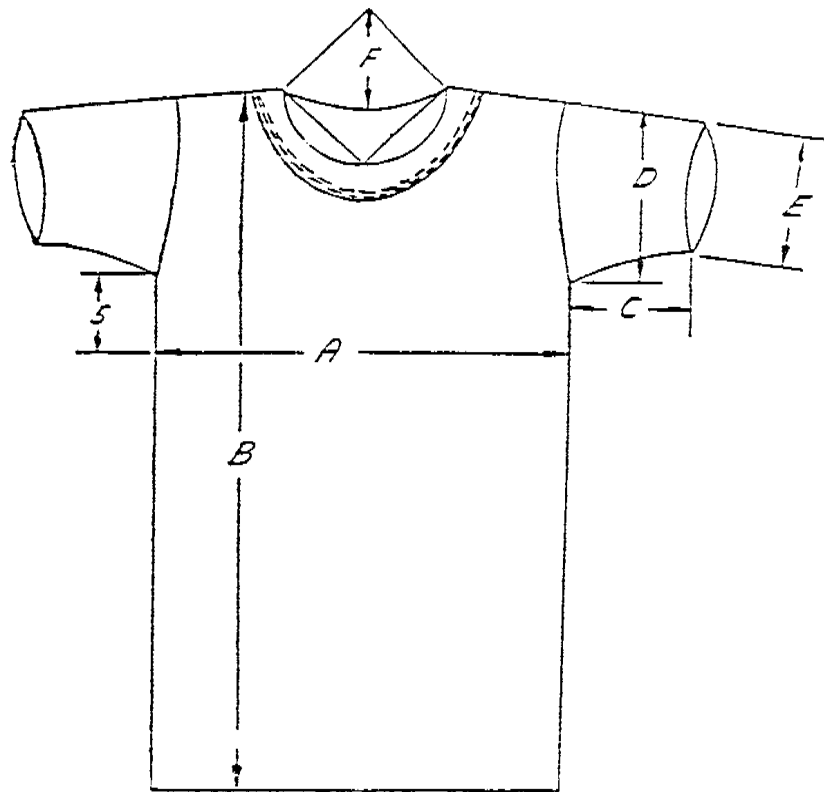


FIGURE 2 - JERSEY, REVERSIBLE, ALTERNATE COLLARETTE