

INCH-POUND

A-A-55196A

July 26, 2000

**SUPERCEDING**

A-A-55196

9 April 1993

## COMMERCIAL ITEM DESCRIPTION

### COVERALLS, DISPOSABLE

The General Services Administration has authorized the use of this Commercial Item Description in Preference to MIL-C-87069.

1. **SCOPE.** This Commercial Item Description covers the requirements for a disposable coverall of white, uncoated, spunbonded nonwoven olefin fabric, intended to be worn by civilian and military personnel working with asbestos and/or fibrous glass materials.

2. **CLASSIFICATION.** The disposable coveralls are furnished in the following types and sizes:

Type I- With hood

Type II-Without hood

NOTE: The sizes may be abbreviated as SM/MED, LG/XLG, and XXLG.

### 3. **SALIENT CHARACTERISTICS**

3.1 **Description.** The white disposable coveralls of uncoated, spunbonded nonwoven olefin fabric shall be a one piece step-in-sack type design with or without attached hood and drawstring face closure and double face pressure sensitive tape with removable protective covering adhered vertically to one edge of neck closure flap. There shall be no fly opening. Both types shall have a 3/4 to 1 inch drawcord tunnel along the entire circumference of the body at top of coverall that serves as a body closure at the neck. The tunnel must stop and finish 1/2 inch from the center front to allow ends of drawcord to hang out. The coverall shall have tie tapes at waist and ankles and full length sleeves with elasticized wrists and attached booties. The hood for type I shall be two panels stitched along the top and back, forming the center back seam. Around the face opening there is a 5/8 inch to 3/4 inch tunnel with an enclosed drawcord.

**Beneficial comments, (recommendations, additions, deletions) and any data which may be of use in approving this document should be addressed to: Defense Supply Center Philadelphia, Clothing and Textiles Directorate, Attn: DSCP-COCT, 700 Robbins Avenue, Philadelphia, PA 19111-5096.**

AMSC N/A

FSC 8415

A-A-55196A

3.1.1 Seams and stitching. The seams shall be formed by super-imposing two plies of material, folding both the edges back over the body of material and overedging or straight stitching. The stitches per inch shall be 6 to 8. The stitch gauge and stitch length shall produce adequately durable seams though out the garment. The overedged side of the seam shall finish on the outside of the garment.

3.1.2 Drawcords. The hood drawcord, body drawcord, and leg and waist adjustment ties shall be made out of the basic fabric by folding lengthwise, turning under the edges and stitching 1/16 to 1/8 inch from the folded edge. The finished width shall be 3/8 to 1/2 inch. When hood and body openings are fully extended, the ends of the drawcord shall extend a minimum of 7 inches beyond ends of the drawcord tunnels. The waist adjustment ties shall be cut 72 inches in length and the leg adjustment ties shall each be cut 28 inches in length.

3.2 Material. The basic material shall be white spunbonded (nonwoven), nonperforated (uncoated) olefin fabric. The Weight shall be 1.1 –1.5 oz/sq yd. when tested in accordance with ASTM-D-3776. The minimum Breaking strength (Machine direction) shall be 5.5 pounds and the Cross direction shall be 8.1 pounds when tested in accordance with ASTM-D-5035.

3.3 Thread. The sewing thread shall be commercial type, suitable for the purpose intended. The color of the thread shall be white.

3.4 Elastic. The elastic used around the edges of the wrist shall be 3/8 inch in width, 6 inches in length and shall be either a cut rubber tape, or a woven, braided, or knitted elastic webbing. The color shall be gray, or natural or white.

3.5 Fastener Tape. The fastener tape used to close the neck portion of the hood, when applicable shall be 1/2 inch wide double faced pressure sensitive tape with removable protective covering. The tape shall be of any commercial type that is suitable for the purpose intended.

3.6 Label/markings. The coveralls shall have a combination identification, size and cautionary statement label not less than 2 by 3 inches in size, bearing the information below. The inscription can be directly marked on the material by direct printing, marking, stamping or stenciling or may be printed on a pressure-sensitive label that will adhere satisfactory to the coveralls and shall be placed approximately 2 inches below the top of the drawstring body closure.

COVERALLS, DISPOSABLE

CONTRACT NO:

STOCK NO:

SIZE:

NAME OF CONTRACTOR:

CAUTION

SHALL NOT BE WORN IN HOT WORK AREAS

A-A-55196A

Note: The cautionary statement shall be printed in larger letters than all other lettering on the label.

3.7 Patterns. The government shall furnish a complete set of patterns or a master pattern with grade rules, to maintain uniformity and consistency in manufacturing. The government patterns shall be used to create the contractor's working patterns. Minor modifications are permitted to accommodate manufacturing procedures, however the design and finished measurements shall be maintained.

TABLE I. Pattern Parts

| <u>Nomenclature</u> | <u>Cut Pieces</u> |
|---------------------|-------------------|
| Body                | 2                 |
| Sleeves             | 4                 |
| Bootees <u>1/</u>   | 4                 |
| <u>Type I only</u>  |                   |
| Hood                | 2                 |
| Tunnel              | 1                 |

1/ May be cut in one piece so seam is on the inside of foot in lieu of heel.

3.8 Sizes and Measurements. The finished coveralls shall conform to the measurements below. All measurements and tolerances are expressed in inches.

TABLE II. Measurements

| <u>Sizes</u> | <u>Chest (A)</u> | <u>Sleeve (B)<br/>length</u> | <u>Body (C)<br/>length</u> | <u>Leg inseam<br/>(D)</u> |
|--------------|------------------|------------------------------|----------------------------|---------------------------|
| SM/MD        | 27-1/8           | 35-5/8                       | 37-1/2                     | 31-1/2                    |
| LG/XLG       | 29-5/8           | 37-3/8                       | 39-1/2                     | 32-3/4                    |
| XXLG         | 32-1/8           | 39                           | 41-3/8                     | 33-3/8                    |
| Tolerance    | -1/2,+ 1         | -1/2,+ 1                     | ± 1                        | -1/2,+ 1                  |

| <u>Sizes</u> | <u>Bootee depth (E)</u> | <u>Bootee (F)<br/>length</u> | <u>Hood Length (G)<br/>(type I only)</u> |
|--------------|-------------------------|------------------------------|--|
| SM/MD        | 5-1/8                   | 16-3/8                       | 22-3/4                                   |
| LG/XLG       | 5-1/8                   | 17                           | 22-3/4                                   |
| XXLG         | 5-1/8                   | 17-3/8                       | 22-3/4                                   |
| Tolerance    | ± 1/4                   | ± 1/4                        | ± 1/4                                    |

- A. Chest- Measure from one inch below the base of the armhole across the chest from folded edge to folded edge.
- B. Sleeve length- Measure straight from center of back at hood joining seam to bottom of sleeve.
- C. Body length- Measure from intersection of front seam and center of crotch seam to top of front opening.
- D. Leg inseam- Measure from the center of the crotch seam to the bottom seam of the bootee cover.

A-A-55196A

- E. Bootee depth- Measure from top seam to bottom seam of bootee.  
 F. Bootee length- Measure from front seam to back seam of bootee.  
 G. Hood length- Measure from midpoint of hood body seam to top of hood seam.

3.9 Label/tag. Each item shall be individually bar-coded with a tag for personal clothing items. The non-permanent tags shall be attached to each item, and shall be clearly legible and readable by a scanner. The bar coding element shall be a 13 digit national stock number (NSN). The bar code type shall be a medium to high code density and shall be located so that it is completely visible on the item when it is folded and/or packaged as specified.

#### **4. REGULATORY REQUIREMENTS**

4.1. Recycled, recovered, or environmentally preferable materials. Recycled, recovered, or environmentally preferable materials should be used to the maximum extent possible provided that the material meets or exceeds the operational and maintenance requirements, and promotes economically advantages life cycle costs.

#### **5. QUALITY ASSURANCE PROVISIONS**

5.1 Product Conformance. The products provided shall meet the salient characteristics of this CID, conform to the producer's own drawings, specifications, standards and quality assurance practices, and be the same product offered for sale in the commercial market. The government reserves the right to require proof of such conformance.

5.1.2 Visual examination. Each coverall shall be examined for the defects listed below:

| <b><u>Material defects</u></b>  | <b><u>Major</u></b> |     |
|---|---------------------|-----|
| Cloth-Any hole, cut, tear, mend, burn, needle chew, any imbedded foreign matter; overall uncleanness; objectionable odor. | 101                 |     |
| <b><u>Seams and stitching</u></b>   |                     |     |
| -End of stitching not caught in other seams or not securely backstitched  | 102                 |     |
| -Pleated or puckered seam   |                     | 201 |
| -Stitching excessively loose or tight   | 103                 |     |
| -Thread breaks not securely overstitched for a 1/2 inch distance  | 104                 |     |
| -Open seam more than 1 inch   | 105                 |     |
| -Open seam less than 1 inch   |                     | 202 |
| <b><u>Dimensions</u></b>  |                     |     |
| -Measurement of item not as specified   | 106                 |     |
| <b><u>Labels</u></b>  |                     |     |
| -Any information illegible, incorrect, incomplete, or missing   | 107                 |     |

A-A-55196A

5.2 Acceptance criteria. Acceptance criteria shall be as specified in the contract or purchase order.

**6. PACKAGING**

6.1 Preservation, packing, and marking. The preservation, packing, and marking will be as specified in the contract or order.

**7. NOTES**

7.1 Source of Government documents. Copies of military and Federal documents are available from:

Standardization Documents Order Desk  
Bldg. 4D  
700 Robbins Avenue  
Philadelphia, PA 19111-5094

**MILITARY INTERESTS:**

**CUSTODIANS**  
Navy - NU

**CIVIL AGENCY COORDINATING ACTIVITY**

**ACTIVITY:**  
GSA - FSS

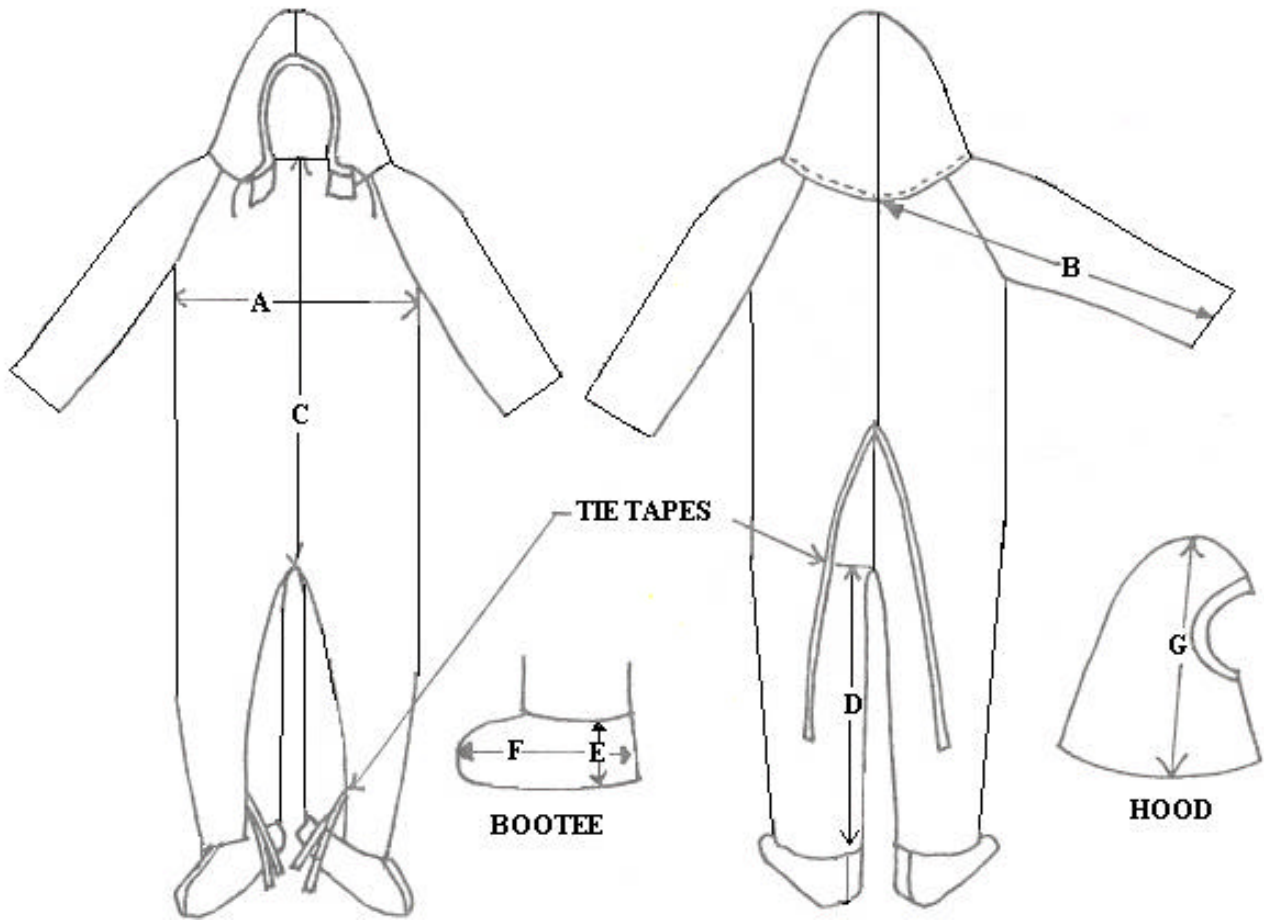
**REVIEW**  
Navy - SH

**PREPARING ACTIVITY:**  
DLA - CT

(Project number 8415- 0185 )

A-A-55196A

COVERALLS, DISPOSABLE



NOTE: HOOD NOT APPLICABLE TO TYPE II COVERALL

FIGURE 1- COVERALLS, DISPOSABLE

A-A-55196A

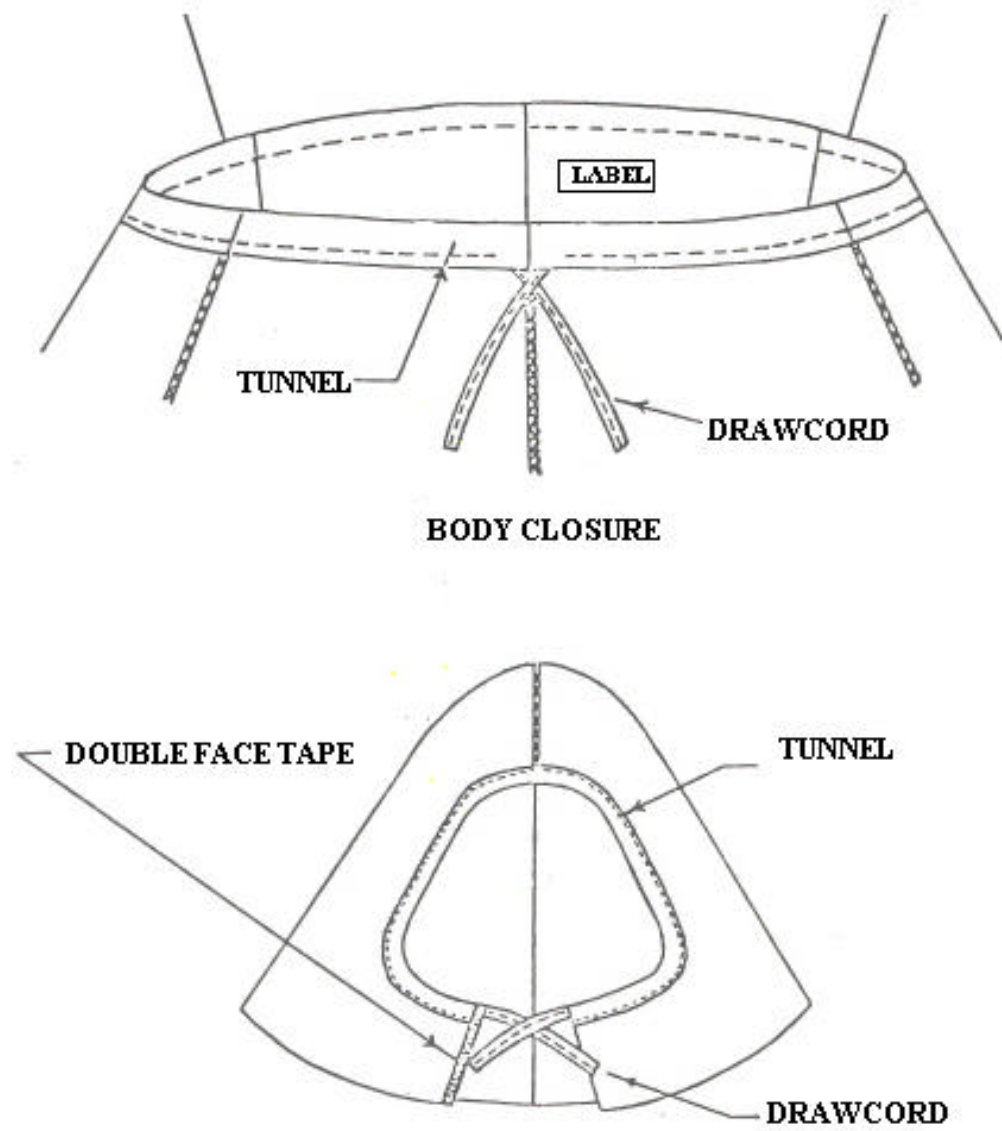


FIGURE 2- HOOD AND DRAWCORD CLOSURE