

INCH-POUND

A-A-55095
10 March 1993

COMMERCIAL ITEM DESCRIPTION

COVERALLS, UTILITY

The General Services Administration has authorized the use of this Commercial Item Description in preference to MIL-C-87000.

Abstract. This Commercial Item Description covers the requirements for a utility coverall fabricated from a polyester and cotton cloth. The coveralls are intended for wear by the Department of Defense male personnel.

Salient Characteristics. The coverall shall consist of a double slider, slide fastener fly front with six patch type pockets; one on each breast with a sewn-down flap covering the top of the pocket, one on each trouser front with the top of the pocket caught in the waistband, and one hip pocket on each back panel just below the waistband. The left hip pocket shall have a sewn-down flap covering the top of the pocket. The left breast pocket shall have a pencil slot. The top of the deep V-neck shall be closed with a button. A gripper type snap fastener shall secure the fly front just above the top of the slide fastener tape. The cuff of the sleeves shall have square ends and an adjustable button-through sleeve tab. Two buttons shall be positioned on each sleeve cuff.

Figure. The figure is furnished for information purposes only. When inconsistencies exist between the written description and the figure, the written description shall govern.

Beneficial comments (recommendations, additions, deletions) and any pertinent data which may be of use in improving this document should be addressed to: Defense Personnel Support Center, Clothing and Textiles Directorate, Attn: DPSC-FSSD, 2800 South 20th Street, Philadelphia, PA 19101-8419, by using the Standardization Document Improvement Proposal (DD Form 1426) appearing at the end of this document or by letter.

AMSC N/A

FSC 8405

DISTRIBUTION STATEMENT A.Approved for public release;
distribution is unlimited.

A-A-55095

Material.

Basic material. The basic material shall be a 2 up, 1 down, right or left hand twill that contains $65\% \pm 5\%$ polyester fiber and not less than 30% cotton based on the dry weight of the desized specimens when tested as specified. The cotton shall be carded and combed, and the polyester shall be polyethylene glycol terephthalate. The yarns shall be a blend of polyester and cotton drawn and evenly spun into singles yarn for both the warp and filling. The cloth shall be singed, desized, scoured, dyed, heat set and treated with an approved resin (see Notes) to provide a supple hand and durable crease-resistant finish. The use of sulfur dyes or dyes containing elementary sulfur or sulfur compounds capable of oxidation to sulfuric acid is prohibited. The finished cloth shall contain no more than a slight trace of liable sulfur as defined in the Test Methods. A certificate of compliance may be submitted, however the Government reserves the right to check test such items to determine the validity of the certification.

Table I - Requirements and test methods

Characteristics	Test Method	Requirements
Fiber content		
Polyester (percent)	ASTM-D 629 Sec 19, TM 7	$65\% \pm 5\%$
Cotton (percent)	ASTM-D 629 Sec 19, TM 7	not less than 30%
Weight	ASTM-D 3776	5.0 (169)
oz/sq yd (g/sq m)		(min) 6.0 (203) (max)
Yarns per inch (2.54 cm)		
Warp	ASTM-D 3775	125 (125)
Filling	ASTM-D 3775	54 (54)
Breaking strength lbs. (N)		
Warp	ASTM-D 5034	165 (734.3)
Filling	ASTM-D 5034	65 (289.3)
pH	ASTM-D 2165	5.5 (min) 8.5 (max)
Weave	Visual <u>1</u> /	None
Sulfur content	FED-STD-2020	As specified in basic material paragraph

A-A-55095

Table I - Requirements and test methods cont.

Characteristics	Test Method	Requirement Paragraph
Colorfastness to:		
Crocking	AATCC TM 8	"good"
Perspiration	AATCC TM 15	"good"
Laundering	AATCC 61	"good"
Light	AATCC 16A	"good"
Dimensional stability	AATCC 150	± 2% (max), W & F
Finish and hand	3/	N/A

- 1/ One determination per sample unit and the result reported as "pass" or "fail".
- 2/ Cotton procedures shall be used.
- 3/ Unless otherwise specified, a certificate of compliance shall be submitted and will be acceptable for the stated requirements.

Color. The color of the cloth shall be shade Blue 3329.

Thread. The thread used shall be polyester-cotton core thread, except that the polyester covering shall not be used, ticket No. 50, 2 or 3 ply, Tex 36-45 for needle, and ticket No 70 for bobbin, 2 or 3 ply, Tex 31-35 conforming to A-A-50199. The size 70 is used for overedge stitch and multithread chain on the bobbin only. The minimum breaking strength is 3.2 lbs. for size 50 thread, and the minimum breaking strength is 2.6 lbs. for size 70 thread. The color shall be Navy Blue AT. C.A. 66060. The dyed thread shall show "good" fastness to laundering and light.

Buttons. The buttons shall be a melamine formaldehyde composition, styles 20 and 21 30 line, 4 hole sewing button. The color shall conform to Shade Blue BV Cable 62003.

Buttonholes. The buttonholes shall be worked over gimp with the purling on the outside and the ends of the buttonhole stitching and gimp securely tacked. The size of the buttonhole shall be of sufficient length to accommodate the required button.

Gimp. The gimp used for reinforcing the buttonholes shall be type I and II size No. 8 of A-A-50198. The color shall be Navy Blue AT C.A. 66060. The dyed gimp shall show "good" fastness to laundering.

A-A-55095

Slide fastener. The slide fastener for the front closure shall be a non-separating, non-reversible, automatic lock with an open top stop and a bridge bottom stop, except that all metal components of the slide fastener shall be fabricated of brass. The color of the tape shall match the basic material and shall show "good" fastness to laundering and light. The tab shall be a short pull.

Snap fastener. The snap fastener for the fly front shall be 16-17 line, black finish pronged ring head type. The components will be firmly engaged when fastened and still permit disengagement with a reasonable, properly applied force. The complete fastener shall be of one manufactures construction only.

Patterns. The government shall furnish a single size pattern. The contractor is responsible for grading patterns for additional sizes. The pattern generally provides for a seam allowance of 1/2 inch for joining seams. Commercial patterns may be used in lieu of the government furnished pattern provided they conform to the cited design and finished measurements.

Labels.

Combination label. Each coverall shall have a combination instruction and identification label positioned 2-3 inches down from neckline centered ($\pm 1/2$ inch) over center back seam on inside of coverall and shall bear the following inscription:

COVERALLS, UTILITY (65% POLYESTER AND 35% COTTON)
CONTRACT NO: DLA-100-00-0-0000 (EXAMPLE)
NAME OF CONTRACTOR:
NAME OF MANUFACTURE (if other than contractor)

LAUNDERING INSTRUCTIONS

MACHINE WASH HOT, DO NOT USE CHLORINE BLEACH
TUMBLE DRY MEDIUM HEAT, REMOVE PROMPTLY
OR
USE NAVEDTRA 414-01-45-81, FORMULA II

Size label. The size label for the coveralls shall read as follows:

SIZE 36R (EXAMPLE)
STOCK NUMBER: 8405-00-000-0000 (EXAMPLE)

A-A-55095

Sizes and Measurements The finished coveralls shall conform to the measurements below. All measurements are expressed in inches.

NOTE: The lengths (Short, Regular, Long) may be abbreviated as S, R, L.

Table II - Measurements of coveralls

Sizes	Chest (A)			Sleeve Inseam (B)			Leg Inseam (C)		
	S	R	L	S	R	L	S	R	L
36	40	40	-	19-1/2	20-1/2	-	27-1/2	28-1/2	-
38	42	42	42	19-1/2	20-1/2	21-1/2	27 3/4	28 3/4	29 3/4
40	44	44	44	19-1/2	20-1/2	21-1/2	28	29	30
42	46	46	46	19-1/2	20-1/2	21-1/2	28-1/4	29-1/4	30-1/4
44	48	48	48	19-1/2	20-1/2	21-1/2	28-1/2	29-1/2	30-1/2
46	50	50	50	19-1/2	20-1/2	21-1/2	28-3/4	29-3/4	30 3/4
48	-	52	52	-	20 1/2	21-1/2	-	30	31

Tolerance:

± 1	± 1	± 1	$+1/2$	$+1/2$	$+1/2$	$+3/4$	$+3/4$	$+3/4$
			$-1/4$	$-1/4$	$-1/4$	$-3/8$	$-3/8$	$-3/8$

NOTE: Chest, sleeve inseam and leg inseam measurements shall be taken with coverall slide fastener fully closed, and with coverall laid flat and smooth.

A. Chest - Twice the measurement taken across the front at base of armholes from folded edge to folded edge.

B. Sleeve inseam - Measurement shall be taken from base of the armhole, along sleeve inseam to bottom of sleeve.

C. Leg inseam - Measurement shall be taken from junction of crotch and back seam along leg inseam to bottom of leg.

Product Demonstration Model. When required, offerers shall submit samples of their intended production. The Product Demonstration Model will consist of units independently developed. Product Demonstration Models will be analyzed and evaluated by the government. Evaluation criteria and basis for award are contained in the solicitation. Product Demonstration Models will be retained by the government. One (1) Product Demonstration Model approved by DPSC under the resultant contract will serve as a manufacturing standard for the corresponding production items delivered under this contract. Offerers are advised that the Product Demonstration Model does not relieve the successful offerer of his responsibility to perform in accordance with the Commercial Item Description specified above

A-A-55095

Workmanship. After completion, the finished coveralls shall be clean, and all loose thread, lint, and foreign matter removed

Quality Assurance

Certification. The contractor shall certify that the product offered meets the salient characteristics and all other requirements listed in this document and that the product conforms to the producer's own drawings, specifications, standards and quality assurance practices. The government reserves the right to require proof of such conformance prior to the first delivery and thereafter as may be otherwise provided for, under the provisions of the contract. Reliance on contractor QA systems shall not relieve the contractor of the responsibility of ensuring that all products or supplies submitted to the government for acceptance comply with all requirements of the contract.

Examination. Lots of coveralls shall be inspected in accordance with "Sampling Procedures and Tables for Inspection by Attributes", ANSI/ASQC Z1.4, published by the American Society for Quality Control.

Defects. The coveralls shall be examined in accordance with provisions for finished coveralls as specified in MIL-STD-1668.

Packaging Examination. The fully packaged shipping containers shall be examined in accordance with defects listed below. The lot size shall be the number of shipping containers in the inspection lot. The inspection level shall be S-2 and AQL, expressed in terms of defects per hundred units, shall be 2.5.

EXAMINE	DEFECT
Marking (exterior and interior)	Omitted; incorrect; illegible; of improper size, location, or method of application
Materials	Any component missing, damaged, or not as specified
Workmanship	Inadequate application of components, such as: incomplete closure of container flaps, loose strapping, improper taping, or inadequate stapling

A-A-55095

EXAMINE	DEFECT - cont.
Content	Number of items in container is more or less than required
	NSN shown on one or more items not as specified on shipping container
Palletization	Length, width, or height exceeds specified maximum requirements
	Pallet type not as specified
	Load not bonded as specified

Regulatory Requirements. The offeror/contractor is encouraged to use recovered materials in accordance with Public Law 94-580 to the maximum extent practicable.

Preservation, Packing, and Marking. The preservation, packing, and marking shall be as specified in the contract or order.

Notes. An approved list of durable press resins can be obtained by contracting, Defense Personnel Support Center, Clothing and Textiles Directorate, ATTN: DPSC-FSSC, 2800 South 20th St., Philadelphia, Pa., 19101-8419.

Source of Government Documents. Copies of Military and Federal documents are available from:

Standardization Documents Order Desk
Bldg. 4D
700 Robbins Avenue
Philadelphia, PA 19111-5094

DEPARTMENT OF DEFENSE (DOD) STANDARD SHADES FOR SEWING THREADS
DEPARTMENT OF DEFENSE (DOD) STANDARD SHADES FOR BUTTONS

(Application for copies of the above standards should be addressed to the Color Association of the United States, 343 Lexington Ave, New York, NY 10106.)

A-A-55095

Sources of Nongovernment Documents.

ANSI/ASQC Z1.4 - Sampling Procedures and Tables For Inspection
By Attributes

(Applications for copies should be addressed to American
National Standards Institute, 1430 Broadway, New York, NY 10018-
3308.)

ASTM-D 629 - Fiber content
ASTM-D 2165 - pH
ASTM-D 3775 - Yarns per inch
ASTM-D 3776 - Weight

(Applications for copies should be addressed to American
Society For Testing and Materials, 1916 Race Street,
Philadelphia, PA 19103.)

AATCC 8 - Colorfastness to Crocking: AATCC Crockmeter Method
AATCC 15 - Colorfastness to Perspiration
AATCC 16 - Colorfastness to Light
AATCC 61 - Colorfastness to Laundering, Home, and Commercial:
Accelerated
AATCC 150 - Dimensional stability

(Applications for copies should be addressed to American
Association of Textile Chemists and Colorists (AATCC), P.O. Box
12215, Triangle Park, NC 27709-2215)

Custodian:
Navy - NU

Civil Agency Coordinating
Activity:
GSA - FSS

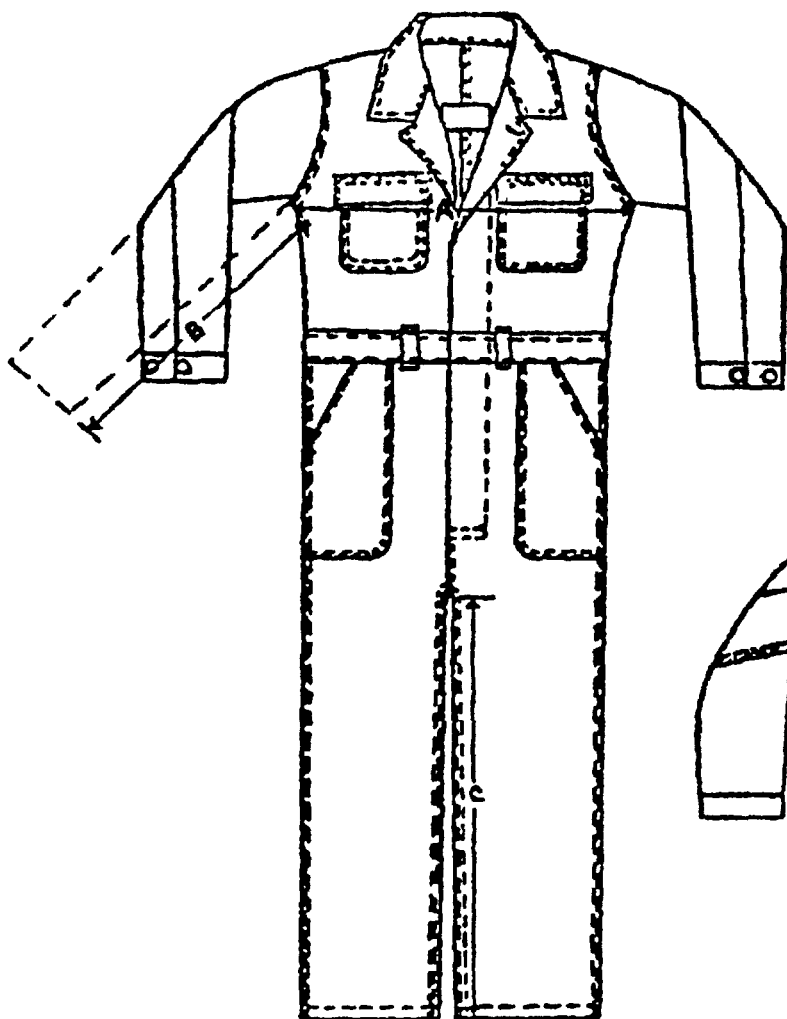
Review Activity:
Coast Guard - CG

Preparing Activity:
DLA - CT

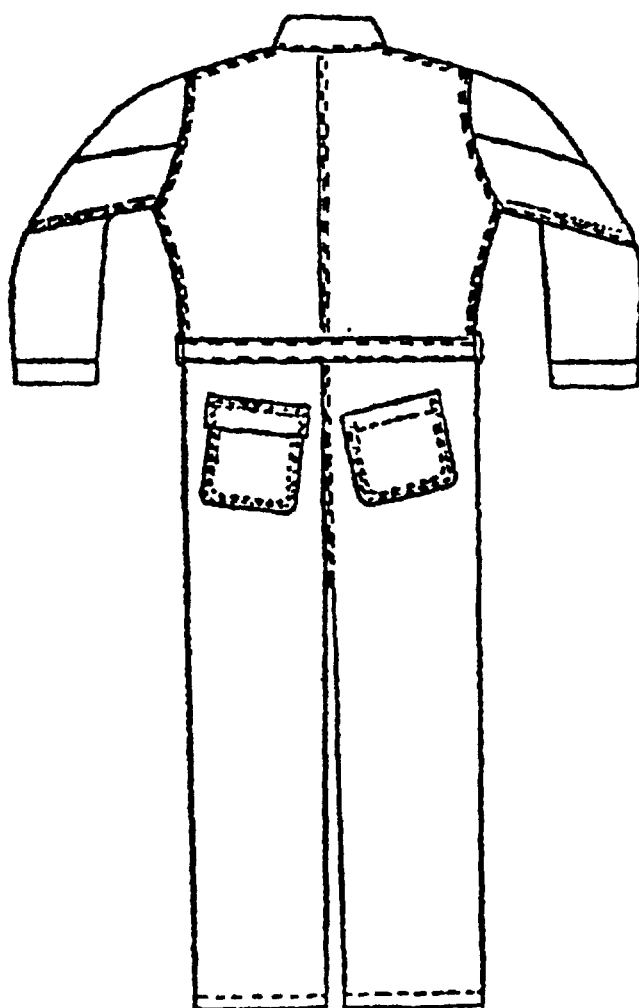
User Activity:
Navy - SH

Project No. 8405-0210

A-A-55095



FRONT



BACK

STANDARDIZATION DOCUMENT IMPROVEMENT PROPOSAL

INSTRUCTIONS

1. The preparing activity must complete blocks 1, 2, 3, and 8. In block 1, both the document number and revision letter should be given.
2. The submitter of this form must complete blocks 4, 5, 6, and 7.
3. The preparing activity must provide a reply within 30 days from receipt of the form.

NOTE: This form may not be used to request copies of documents, nor to request waivers, or clarification of requirements on current contracts. Comments submitted on this form do not constitute or imply authorization to waive any portion of the referenced document(s) or to amend contractual requirements.

I RECOMMEND A CHANGE:

1. DOCUMENT NUMBER

A-A-55095

2. DOCUMENT DATE (YYMMDD)

930310

3. DOCUMENT TITLE
COVERALLS, UTILITY

4. NATURE OF CHANGE (Identify paragraph number and include proposed rewrite, if possible. Attach extra sheets as needed)

5. REASON FOR RECOMMENDATION

6. SUBMITTER

a. NAME (Last, First, Middle Initial)

b. ORGANIZATION

c. ADDRESS (Include Zip Code)

d. TELEPHONE (Include Area Code)

(1) Commercial

(2) AUTOVON
(If applicable)7. DATE SUBMITTED
(YYMMDD)

8. PREPARING ACTIVITY

a. NAME

Defense Personnel Support Center
ATTN: DPSC-FSSD (12-3-D)

b. TELEPHONE (Include Area Code)

(1) Commercial

(2) AUTOVON

215-737-8105

444-8105

c. ADDRESS (Include Zip Code)

2800 South 20th Street
P. O. Box 8419
Philadelphia, Pennsylvania 19101-8419

IF YOU DO NOT RECEIVE A REPLY WITHIN 45 DAYS, CONTACT:
Defense Quality and Standardization Office
5703 Leesburg Pike Suite 1403, Falls Church VA 22041-3466
Telephone (703) 756 2340 AUTOVON 289 2340