

[INCH-POUND]
A-A-52168B
19 August 2013
SUPERSEDING
A-A-52168A
22 September 1993

COMMERCIAL ITEM DESCRIPTION

CABLE AND CONDUIT ASSEMBLY, PARKING BRAKE-STRAIGHT TYPE, BUTTON AND THREADED FITTINGS

The General Services Administration has authorized the use of this commercial item description for all federal agencies.

1. **SCOPE.** This commercial item description (CID) covers the general requirements for cable and conduit assembly, parking brake-straight type, button and threaded fittings. Cable and conduit assembly, parking brake-straight type, button and threaded fittings covered by this CID are intended for commercial/industrial applications.
2. **CLASSIFICATION/PART OR IDENTIFICATION NUMBER (PIN).** This CID uses a classification system which is included in the PIN as specified in the following example (see 7.1).

<u>AA52168</u> — CID number	-	<u>001</u> — Size
---	---	------------------------------

3. SALIENT CHARACTERISTICS.

3.1 Interface and physical dimensions. Cable and conduit assembly, parking brake-straight type, button and threaded fittings supplied to this CID shall be as specified herein (see figure 1).

3.2 General requirements. This commercial item description (CID) covers several sizes of parking brake-straight type cable and conduit assemblies, with button and threaded fittings. The cable and conduit assembly is, pre-stretched under a load of 1000 pounds (lbs) and is capable of withstanding a load of 2,000 lbs sustained for a period of two hours with a minimum permissible slippage of each end fitting with respect to the cable. With load applied, cable outer sheath should not show any lateral displacement or permanent deformation of conduit

Comments, suggestions, or questions on this document should be addressed to DLA Land and Maritime, Attn: VAI, 3990 East Broad Street, Columbus, OH 43218-3990 or fluidflow@dla.mil. Since contact information can change, you may want to verify the currency of this address information using the ASSIST Online at <https://assist.dla.mil>.

A-A-52168B

3.3 Design and construction. The parking brake-straight type cable and conduit assembly with button and threaded fittings shall be designed and constructed in accordance with figure 1.

3.3.1 Materials. The material used shall be as specified in figure 1. The use of recovered material made in compliance with regulatory requirements is acceptable providing that all requirements of this CID are met.

3.3.2 Slippage. The cable assembly shall be capable of withstanding a load of 2000 lbs. sustained for a period of two hours with a maximum permissible slippage of each end fitting with respect to the cable of fifteen thousandths (0.015) of an inch. With load applied, the cable outer sheath shall not show any lateral displacement or permanent deformation of conduit. The outside diameters of the conduit coils shall remain in-line.

3.3.3 Pre-stretched. Each cable assembly shall be pre-stretched under a load of 1000 lbs.

3.3.4 Grease. Conduit shall be packed at assembly with grease per MIL-PRF-23827.

3.4 Marking. Cable and conduit assembly, parking brake-straight type, button and threaded fittings supplied to this CID shall be marked with the manufacturer's (MFR's) standard commercial PIN. (NOTE: The part number marked on the unit pack shall be the CID PIN.)

3.5 Recycled, recovered, or environmentally preferable materials. Recycled, recovered, or environmentally preferable materials should be used to the maximum extent possible provided that the material meets or exceeds the operational and maintenance requirements, and promotes economically advantageous life cycle costs.

3.6 Workmanship. Cable and conduit assembly, parking brake-straight type, button and threaded fittings shall be processed in such a manner as to be uniform in quality and shall be free from other defects that will affect life, serviceability, or appearance.

4. REGULATORY REQUIREMENTS. The offeror/contractor is encouraged to use recovered materials to the maximum extent practicable, in accordance with 23.403 of the Federal Acquisition Regulation (FAR).

5. PRODUCT CONFORMANCE PROVISIONS.

5.1 Product conformance. The products provided shall meet the salient characteristics of this CID, conform to the producer's own drawings, specifications, standards, and quality assurance practices, and be the same product offered for sale in the commercial market. The Government reserves the right to require proof of such conformance.

5.2 Certification. Certification must be done with the procuring activity approval. The contractor shall certify that the product offered meets the salient characteristics of the description and conforms to the producer's own drawings, specifications, standards, and quality assurance practices, and is the same as the product offered for sale in the commercial marketplace. The government reserves the right to require proof of such conformance prior to first delivery and thereafter as may be otherwise provided for under the provisions of the contract

6. PACKAGING. Preservation, packing, and marking shall be as specified in the contract or order.

7. NOTES.

7.1 PIN. The PIN should be used for Government purposes to buy commercial products to this CID. See section 2 for PIN format example.

A-A-52168B

7.2 Environmentally preferable material. Environmentally preferable materials should be used to the maximum extent possible to meet the requirements of this specification. As of the dating of this document, the U.S. Environmental Protection Agency (EPA) is focusing efforts on reducing 31 priority chemicals. The list of chemicals and additional information is available on their website <http://www.epa.gov/osw/hazard/wastemin/priority.htm>. Included in the EPA list of 31 priority chemicals are cadmium, lead, and mercury. Use of these materials should be minimized or eliminated unless needed to meet the requirements specified herein (see Section 3).

7.3 Commercial and Government Entity (CAGE) code. For ordering purposes, inventory control, and submission of these Cable and conduit assembly, parking brake-straight type, button and threaded fittings to DLA Land and Maritime under the Military Parts Control Advisory Group (MPCAG) evaluation program, CAGE code 58536 should be used.

7.4 Source of documents.

DEPARTMENT OF DEFENSE SPECIFICATION

MIL-PRF-23827 – Grease, Aircraft and Instrument, Gear and Actuator Screw

(Copies of these documents are available online at <http://quicksearch.dla.mil> or from the DLA Document Services Order Desk, 700 Robbins Avenue, Building 4D, Philadelphia, PA 19111–5094).

FEDERAL REGULATIONS

FAR – Federal Acquisition Regulations (FAR)

(Copies of these documents are available online at www.acquisition.gov/comp/far/index.html or from the U.S. Government Printing Office, 732 North Capital Street, NW, Washington D.C. 20401.)

7.5 Ordering data. The contract or order should specify the following:

- a. CID document number, revision, and CID PIN.
- b. Product conformance provisions.
- c. Packaging requirements.

7.6 Commercial products. As part of the market analysis and research effort, this CID was coordinated with the following manufacturers of commercial products. At the time of CID preparation and coordination, these manufacturers were known to have commercial products that would meet the requirements of this CID. (NOTE: This information should not be considered as a list of approved manufacturers or be used to restrict procurement to only the manufacturers shown.)

A-A-52168B

<u>MFR's CAGE</u>	<u>Manufacturer's NAME</u>
7S526	B.T.M.C. CORPORATION ROBERT SCHAFFER 2161 DIVIDEND DR COLUMBUS, OH 43228-3805 - USA rschaffer@btmccorp.com Tel: (614) 891-1454 Fax: (614) 891-6912
7Z016	KAMPI COMPONENTS CO. INC. AMY POTTS 88 CANAL RD FAIRLESS HILLS, PA 19030-4302 http://www.kampi.com AMY POTTS amy@kampi.com Tel: (267) 543-4002 FAX(215) 531-5558 sabrina@kampi.com Tel: (215) 736-2000 Fax: (215) 531-5541
02769	LOCKHEED MARTIN CORPORATION DBA LOCKHEED MARTIN DIV MS2 199 BORTON LANDING RD MOORESTOWN, NJ 08057-3054 http://www.lockheedmartin.com DEBBIE KISTER deborah.p.kister@lmco.com Tel: (856) 722-4615 Fax: (856) 722-4619 JAMES V. AMATRUDI 199 BORTON LANDING ROAD MOORESTOWN, NJ 08057 - USA james.v.amatrudi@lmco.com Tel: (856) 608-6370 Fax: (856) 608-6363
4MBX8	ALTO PRODUCTS CORP 1 ALTO WAY ATMORE, AL 36502-1018 http://www.altousa.com RANDY SOWERS ONE ALTO WAY ATMORE, AL 36502 - USA randy.sowers@altousa.com Tel: (251) 368-7750 Fax: (251) 446-6750

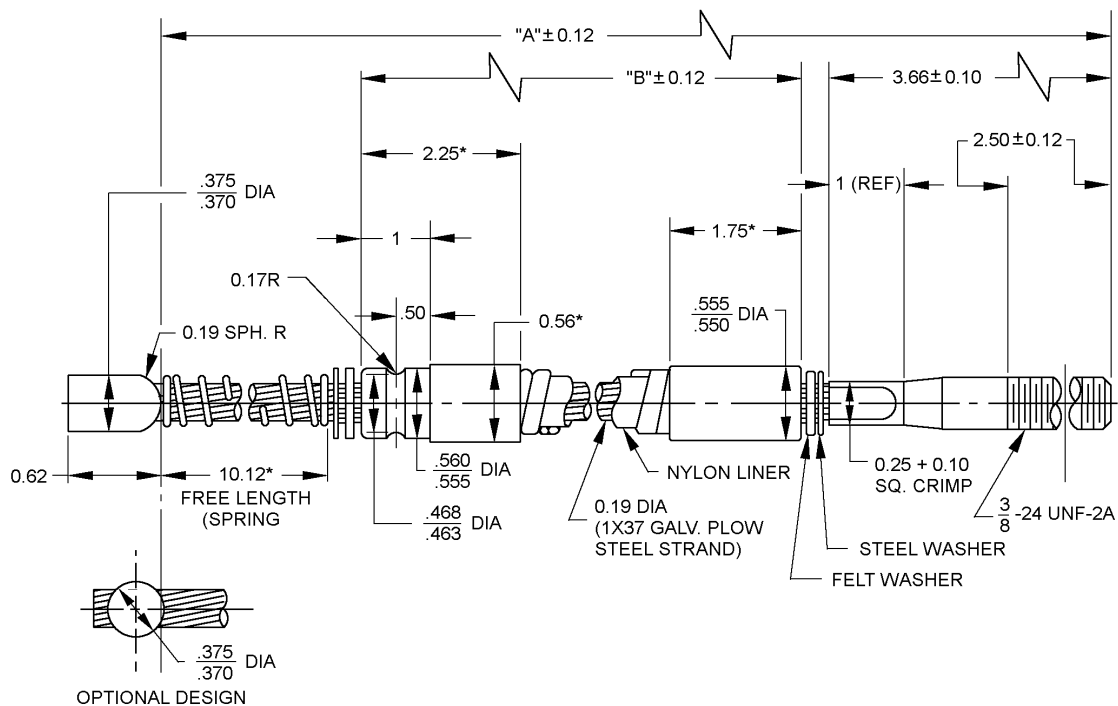
A-A-52168B

77 Government users. To acquire information on obtaining these cable and conduit assembly, parking brake-straight type, button and threaded fittings from the Government inventory system, contact DLA Land and Maritime, ATTN: DLA Land and Maritime Call Center (–NAB), P.O. Box 3990, Columbus, OH 43218–3990 or telephone (614) 692-2271 or (614) 692-3191.").

7.8 Legacy. This commercial item description is a replacement for MS53060 for all federal agencies and copies of these document are available online at <http://quicksearch.dla.mil> or from the DLA Document Services Order Desk, 700 Robbins Avenue, Building 4D, Philadelphia, PA 19111–5094).

7.9 Changes from previous issue. Marginal notations are not used in this revision to identify changes with respect to the previous issue due to the extensiveness of the changes.

A-A-52168B



inch	mm	inch	mm	inch	mm
0.10	2.54	0.375	9.53	0.62	15.75
0.12	3.05	0.463	11.76	1.00	25.4
0.17	4.32	0.468	11.89	1.75	44.45
0.19	4.83	0.5	12.7	2.25	57.15
0.25	6.35	0.555	14.1	2.50	63.5
0.37	9.40	0.56	14.22	10.12	257.05

PIN	MS PIN	Former Legacy PIN	"A" DIM	"B" DIM
A-A-52168-1	MS53060-1	7049884	44	28
A-A-52168-2	MS53060-2	7361602	48.88	30.38
A-A-52168-3	MS53060-3	8735521	50	34
A-A-52168-4	MS53060-4	8735522	53	34.25
A-A-52168-5	MS53060-5	8735583	54	38
A-A-52168-6	MS53060-6	8741790	59.50	40.75
A-A-52168-7	MS53060-7		51.88	35.88

Notes: Unless otherwise specified:

1. Dimensions are in inches.
2. Tolerances are ± .03
3. Asterisk indicates a minimum dimension

FIGURE 1. Dash numbers and dimensions.

A-A-52168B

MILITARY INTERESTS

Custodians:

Army - AT
Navy - YD
DLA - CC

Review activities:

Army-AR
Navy-MC,SA

CIVIL AGENCY COORDINATING ACTIVITY:

GSA - FSS

Preparing activity:

DLA - CC

Project 2530-2012-002

NOTE: The activities listed above were interested in this document as of the date of this document. Since organizations and responsibilities can change, you should verify the currency of the information above using the ASSIST Online database at <https://assist.dla.mil>.