

INCH-POUND

A-A-52168A
September 22, 1993
SUPERSEDING
A-A-52168(AT)
13 September 1991

COMMERCIAL ITEM DESCRIPTION

CABLE AND CONDUIT ASSEMBLY, PARKING BRAKE-STRAIGHT
TYPE, BUTTON AND THREADED FITTINGS

The General Services Administration has authorized the use of this commercial item description (CID) as a replacement for MS53060(AT) which has been canceled.

ABSTRACT.

This commercial item description (CID) covers several sizes of parking brake-straight type cable and conduit assemblies, with button and threaded fittings. The cable and conduit assembly is pre-stretched under a load of 1000 pounds (lbs) and is capable of withstanding a load of 2000 lbs sustained for a period of two hours with a minimum permissible slippage of each end fitting with respect to the cable. With load applied, cable outer sheath should not show any lateral displacement or permanent deformation of conduit.

SALIENT CHARACTERISTICS.

- a. Design and construction. The parking brake-straight type cable and conduit assembly with button and threaded fittings shall be designed and constructed in accordance with figure 1.
- b. Materials. The material used shall be as specified in figure 1. The use of recovered material made in compliance with regulatory requirements is acceptable providing that all requirements of this CID are met (see note e).

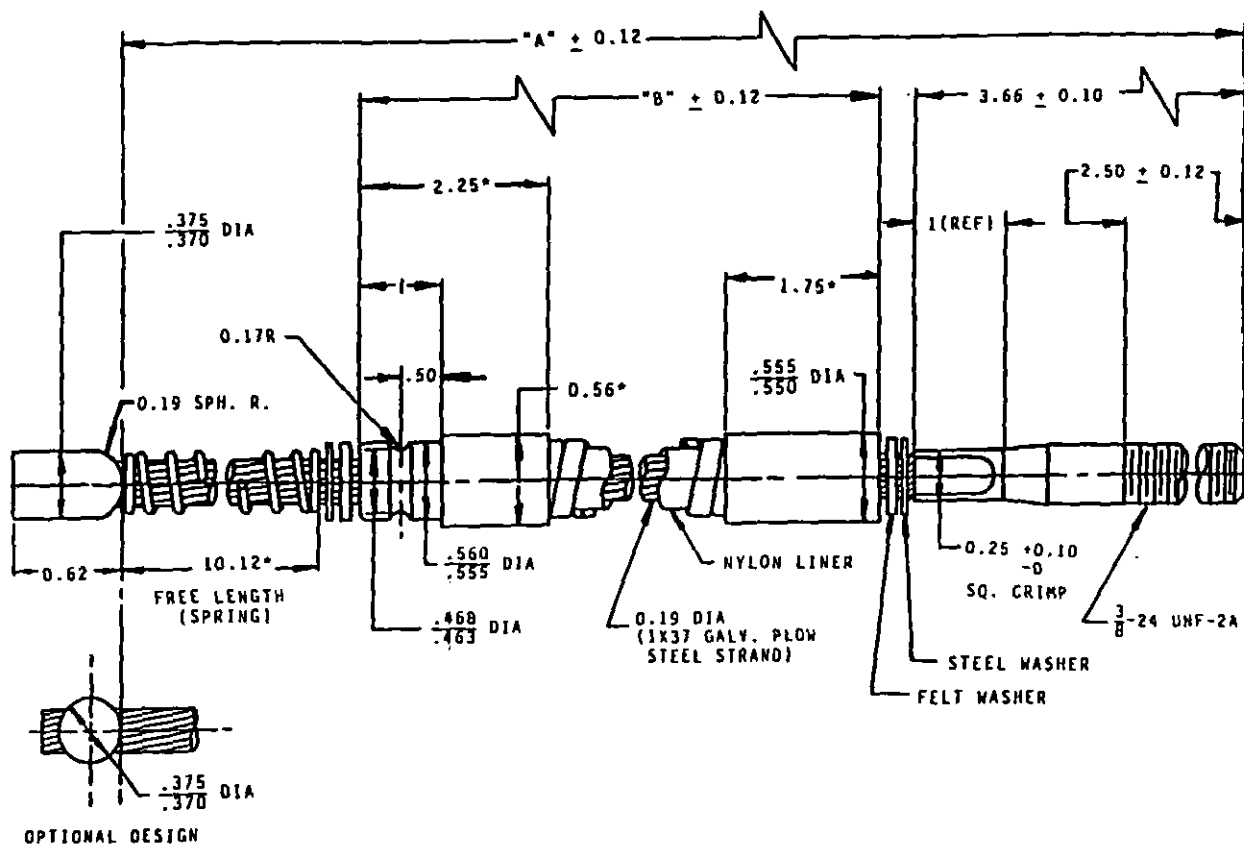
Beneficial comments, recommendations, additions, deletions clarification, etc. and any other data which may improve this document should be sent by letter to: U.S. Army Tank-Automotive Command, ATTN: AMSTA-GDS, Warren, MI 48397-5000.

AMSC N/A

FSC 2530

DISTRIBUTION STATEMENT A. Approved for public release; distribution is unlimited.

A-A-52168A



Part Identifying Number (PIN)	MS Part Number	Former Part Number	"A" DIM	"B" DIM
A-A-52168-1	MS53060-1	7049884	44	28
A-A-52168-2	MS53060-2	7361602	48.88	30.38
A-A-52168-3	MS53060-3	8735521	50	34
A-A-52168-4	MS53060-4	8735522	53	34.25
A-A-52168-5	MS53060-5	8735583	54	38
A-A-52168-6	MS53060-6	8741790	59.50	40.75
A-A-52168-7	MS53060-7		51.88	35.88

NOTES: Unless otherwise specified:

1. Dimensions are in inches
2. Tolerances are $\pm .03$
3. Asterisk indicates a minimum dimension

FIGURE 1. Cable and conduit assembly, parking brake-straight type, button and threaded fittings.

A-A-52168A

c. Slippage. The cable assembly shall be capable of withstanding a load of 2000 lbs. sustained for a period of two hours with a maximum permissible slippage of each end fitting with respect to the cable of fifteen thousandths (0.015) of an inch. With load applied, the cable outer sheath shall not show any lateral displacement or permanent deformation of conduit. The outside diameters of the conduit coils shall remain in-line.

1. Each cable assembly shall be pre-stretched under a load of 1000 lbs.

d. Grease. Conduit shall be packed at assembly with grease per MIL-G-23827.

e. Identification and marking. Identification and marking shall consist of the CID part number and manufacturer's identification in accordance with MIL-STD-130.

QUALITY ASSURANCE PROVISIONS.

a. Responsibility for inspection. The contractor is responsible for the performance of all inspections (examinations and tests).

b. Contractor certification. The contractor shall certify and maintain substantiating evidence that the product offered meets the salient characteristics of this commercial item description and that the product conforms to the producer's own drawings, specifications, workmanship standards, and quality assurance practices. Items with known defects shall not be submitted for Government acceptance. The Government reserves the right to require proof of such conformance prior to the first delivery and thereafter as may be otherwise provided for under the provisions of the contract.

PRESERVATION, PACKAGING, PACKING, LABELING, AND MARKING.

Preservation, packaging, packing, labeling, and marking for the desired level shall be as specified in the contract or order (see note b).

NOTES.

(This section contains information of a general or explanatory nature that may be helpful, but is not mandatory.)

a. Addresses for obtaining copies of referenced documents.

1. Government documents. MIL-G-23827 "Grease, Aircraft and Instrument, Gear and Actuator Screw"; and MIL-STD-130 "Identification Marking of U.S. Military Property" are available from the Navy Publications and Printing Service Office, Standardization Documents Order Desk, Bldg. 4D, 700 Robbins Avenue, Philadelphia, Pennsylvania 19111-5094.

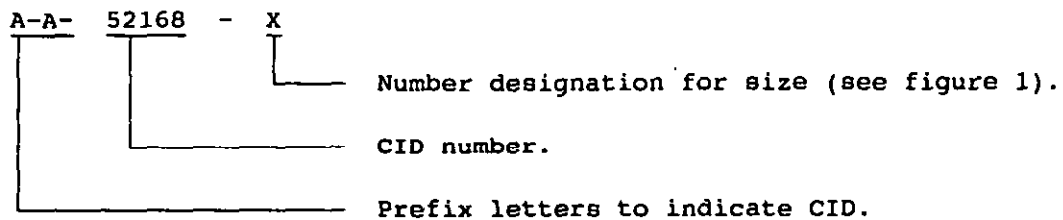
b. Acquisition data. Acquisition documents must specify the following:

1. Title, number and date of this CID.
2. Cable size and part identifying number.
3. Issue of the DODISS to be cited in the solicitation, and if required, the specific issue of individual documents referenced.
4. Selection of applicable level and packaging requirements.
5. If special marking or packaging is required.

c. Cross-reference. Cable and conduit assemblies conforming to this commercial item description are interchangeable/substitutable with cable and conduit assemblies conforming to MS53060(AT), dated 14 July 1983.

A-A-52168A

d. Part or identifying number (PIN) structure. The PINs to be used for cable and conduit assemblies acquired to this CID are created as follows:



e. Regulatory requirements. Recovered material is material made in conformance to section 402 of the Clean Air Act (33 U.S.C. 1342 et seq).

MILITARY INTERESTS:

Custodian:

Army - AT

Review activity:

DLA - CS

CIVIL AGENCY COORDINATING ACTIVITY:

GSA - FSS

PREPARING ACTIVITY:

Army - AT

(Project 2530-0367)