

## METRIC

A-A-52475B  
 19 August 2013  
 SUPERSEDING  
 A-A-52475A  
 8 October 2003

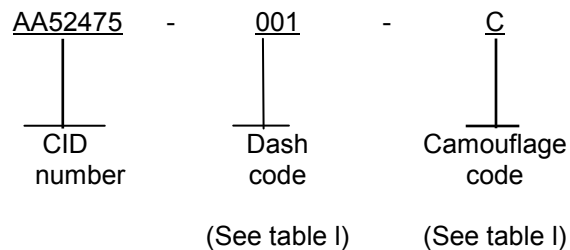
## COMMERCIAL ITEM DESCRIPTION

## CHOCK, WHEEL

The General Services Administration has authorized the use of this commercial item description for all federal agencies.

1. SCOPE. This commercial item description (CID) covers the general requirements for chocks wheel. Chock wheel covered by this CID are intended for commercial/industrial applications.

2. CLASSIFICATION/PART OR IDENTIFICATION NUMBER (PIN). This CID uses a classification system which is included in the PIN as shown in the following example (see 7.1).



## 3. SALIENT CHARACTERISTICS.

3.1 Interface and physical dimensions. Chock wheels supplied to this CID shall be as specified herein (see figure 1).

3.1.1 Types. Types shall be classified as follows (see table I and figure 1).

Beneficial comments, recommendations, additions, deletions, clarifications, etc., and any data that may improve this document should be sent to: DLA Land and Maritime, ATTN: VAI, P.O. Box 3990, Columbus OH 43218-3990, or email [fluidflow@dla.mil](mailto:fluidflow@dla.mil). Since contact information can change you may want to verify the currency of the address information using the ASSIST Online database at <https://assist.dla.mil>.

## A-A-52475B

TABLE I. Type material CID dash code.

CID type code	Type	Material
001	Type I	Wood chock
002	Type II	Rubber or Wood
003	Type III	Cast or extruded, non-ferrous metal chock
004	Type IV	Rubber
005	Type V	Wood

3.2 Wheel chock material.

3.2.1 Type 1 wheel chocks. Type I wheel chocks shall be made of laminated hardwood (maple, red or white oak) with 32 mm (1.259 in) minimum thickness.

3.2.2 Type II wheel chocks. Type II wheel chocks shall be made of vulcanized or synthetic rubber or laminated hardwood with 32 mm (1.259 in) minimum thickness. Industry alternate materials, such as, laminated rubber pads, fabric-reinforced rubber compounds, extruded rubber compounds, molded urethane, etc. may also be used.

3.2.3 Type III wheel chocks. Type III wheel chocks shall be made of cast or extruded non-ferrous metal, such as, aluminum, which is "spark-proof".

- a. Chain assembly. The chain assembly shall be fabricated from the following components:
  1. Steel chain 2286 mm (89.999 in) long (minimum) size 4.76 mm (0.187 in) (nominal).
  2. Steel lap link size 4.76 mm (0.187 in) (nominal).
- b. Eye bolt. The eye bolt shall be fabricated from wrought iron or steel.
- c. Snap hook. The snap hook (32 mm (1.259 in) in size) shall be made of ungalvanized malleable iron.
- d. Design and construction. The wheel chocks shall be designed and constructed in accordance with figure 1.
- e. Finish treatment. Wheel chocks shall be cleaned treated and painted in accordance with FED-STD-595. Finish color shall be camouflage as specified in table II. The paint system applies to all mating wood surfaces, all exterior wood surfaces, all ferrous part surfaces, and all aluminum part surfaces. Rubber and rubber compounds shall not be painted and shall be molded color black. All ferrous metal parts shall be zinc plated in accordance with ASTM A153/A153M before painting.

TABLE II. CID dash code for camouflage colors

CID dash number	Camouflage colors	Chip number FED-STD-595
A	Green 383	34094
B	Black	37030
C	Tan 686A	33446
D	Field Drab	33105
E	Earth Yellow	33245
F	Sand	33303
G	Aircraft Green	34031
H	Aircraft Gray	36300
K	Dark Sandstone	33510
M	Interior Aircraft Black	37031

A-A-52475B

f. Identification markings. Identification markings shall be permanent and legible and shall include, as a minimum, the manufacturer's CAGE code and part number, and the PIN (see section 2).

g. Special marking. The marking shall appear on the flat end of the wheel choc

3.3 Marking. Chock wheels supplied to this CID shall be marked with the manufacturer's (MFR's) standard commercial PIN. (NOTE: The part number marked on the unit pack shall be the CID PIN.)

3.4 Recycled, recovered, or environmentally preferable materials. Recycled, recovered, or environmentally preferable materials should be used to the maximum extent possible provided that the material meets or exceeds the operational and maintenance requirements, and promotes economically advantageous life cycle costs.

3.5 Workmanship. Chock wheels shall be processed in such a manner as to be uniform in quality and shall be free from other defects that will affect life, serviceability, or appearance.

4. REGULATORY REQUIREMENTS. The offeror/contractor is encouraged to use recovered materials to the maximum extent practicable, in accordance with 23.403 of the Federal Acquisition Regulation (FAR).

5. PRODUCT CONFORMANCE PROVISIONS

5.1 Product conformance. The products provided shall meet the salient characteristics of this CID, conform to the producer's own drawings, specifications, standards, and quality assurance practices, and be the same product offered for sale in the commercial market. The Government reserves the right to require proof of such conformance

5.2 Certification. Certification must be done with the procuring activity approval. The contractor shall certify that the product offered meets the salient characteristics of the description and conforms to the producer's own drawings, specifications, standards, and quality assurance practices, and is the same as the product offered for sale in the commercial marketplace. The government reserves the right to require proof of such conformance prior to first delivery and thereafter as may be otherwise provided for under the provisions of the contract

6. PACKAGING. Preservation, packing, and marking shall be as specified in the contract or order.

7. NOTES.

7.1 PIN. The PIN should be used for Government purposes to buy commercial products to this CID. See section 2 for PIN format example.

7.2 Environmentally preferable material. Environmentally preferable materials should be used to the maximum extent possible to meet the requirements of this specification. As of the dating of this document, the U.S. Environmental Protection Agency (EPA) is focusing efforts on reducing 31 priority chemicals. The list of chemicals and additional information is available on their website <http://www.epa.gov/osw/hazard/wastemin/priority.htm>. Included in the EPA list of 31 priority chemicals are cadmium, lead, and mercury. Use of these materials should be minimized or eliminated unless needed to meet the requirements specified herein (see Section 3).

7.3 Commercial and Government Entity (CAGE) code. For ordering purposes, inventory control, and submission of these chock, wheel to DLA Land and Maritime under the Military Parts Control Advisory Group (MPCAG) evaluation program, CAGE code 58536 should be used.

A-A-52475B

7.4 Source of documents

## FEDERAL STANDARD

FED-STD-595	- Colors Used in Government Procurement
FED-STD-595/34094	- Camouflage Green 383
FED-STD-595/37030	- Camouflage Black
FED-STD-595/33446	- Camouflage Tan 686A
FED-STD-595/33105	- Camouflage Field Drab
FED-STD-595/33245	- Camouflage Earth Yellow
FED-STD-595/33303	- Camouflage Sand
FED-STD-595/34031	- Camouflage Aircraft Green
FED-STD-595/36300	- Camouflage Aircraft Grey
FED-STD-595/33510	- Camouflage Dark Sandstone
FED-STD-595/37031	- Camouflage Interior Aircraft Black

(Copies of these documents are available online at <http://quicksearch.dla.mil> or from the DLA Document Services Order Desk, 700 Robbins Avenue, Building 4D, Philadelphia, PA 19111-5094).

## FEDERAL REGULATIONS

FAR	– Federal Acquisition Regulations (FAR)
-----	---

(Copies of these documents are available online at [www.acquisition.gov/comp/far/index.html](http://www.acquisition.gov/comp/far/index.html) or from the U.S. Government Printing Office, 732 North Capital Street, NW, Washington D.C. 20401.)

## Other Publications

## ASTM INTERNATIONAL

ASTM A153/A153M	– Standard Specification for Zinc Coating (Hot-Dip) on Iron and Steel Hardware
-----------------	--

(Copies of these documents are available online at <http://www.astm.org> or from the ASTM International, P.O. Box C700, 100 Barr Harbor Drive, West Conshohocken, PA 19428-2959.)

7.5 Ordering data. The contract or order should specify the following:

- a. CID document number, revision, and CID PIN.
- b. Product conformance provisions.
- c. Packaging requirements.

7.6 Commercial products. As part of the market analysis and research effort, this CID was coordinated with the following manufacturers of commercial products. At the time of CID preparation and coordination, these manufacturers were known to have commercial products that would meet the requirements of this CID. (NOTE: This information should not be considered as a list of approved manufacturers or be used to restrict acquisition to only the manufacturers shown.)

A-A-52475B

<u>MFR's CAGE</u>	<u>MFR's name and address</u>
02769	LOCKHEED MARTIN CORPORATION 199 BORTON LANDING RD MOORESTOWN, NJ 08057-3054 DEBBIE KISTER <a href="mailto:deborah.p.kister@lmco.com">deborah.p.kister@lmco.com</a> (856) 722-4615 JAMES V. AMATRUDI <a href="mailto:james.v.amatrudi@lmco.com">james.v.amatrudi@lmco.com</a> (856) 608-6370
4Q9G1	MT MEJIA SERVICES INC. PAREEN DAMJI 12990 BRANFORD STREET, UNIT J ARLETA, CA, 91331 <a href="mailto:pareen@mtmserv.com">pareen@mtmserv.com</a> (818) 618-1683 MIGUEL T. MEJIA <a href="mailto:emeteeme4@yahoo.com">emeteeme4@yahoo.com</a> (818) 618-1683
4D937	PPI INDUSTRIES CORP. 11649 PENDLETON ST SUN VALLEY, CA 91352-2502 <a href="http://www.ppisupply.com">http://www.ppisupply.com</a> SHIRAZ DAMJI <a href="mailto:shiraz@goppi.com">shiraz@goppi.com</a> (818) 768-5665 SAL DAMJI <a href="mailto:sdamji@goppi.com">sdamji@goppi.com</a> (818) 768-5665

7.7 Government users. To acquire information on obtaining these CHOCK, WHEEL, from the Government inventory system, contact DLA Land and Maritime, ATTN: DLA Land and Maritime Call Center (–NAB), P.O. Box 3990, Columbus, OH 43218–3990 or telephone (614) 692-2271 or (614) 692-3191).

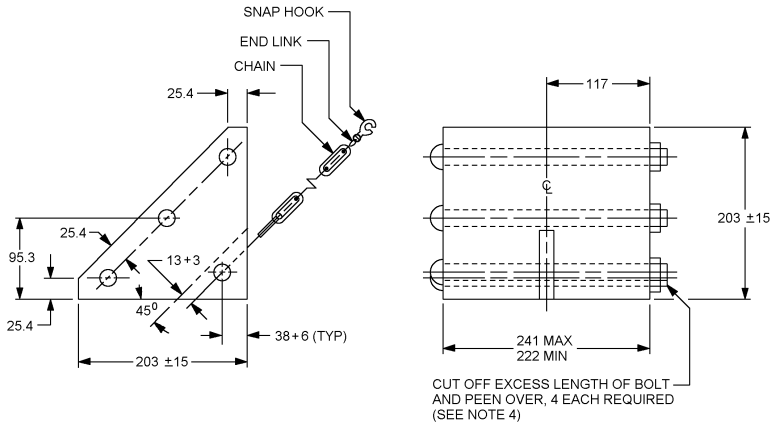
7.8 Legacy. This commercial item description is a replacement for MS52127 for all federal agencies MS52127 is canceled as of 06 October 1993 and copies of these documents are available online at <http://quicksearch.dla.mil> or from the DLA Document Services Order Desk, 700 Robbins Avenue, Building 4D, Philadelphia, PA 19111–5094).

7.9 Replacement parts. The following table III is a list of inch-pound replacement parts for the wheel chock assembly.

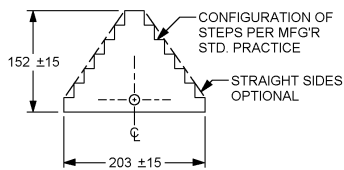
A-A-52475B

TABLE III. Replacement parts.

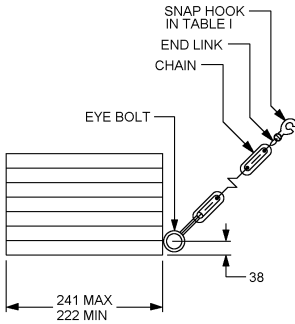
Name of part	Replacement PIN
Carriage bolt	MS3575 1-65
Flat washer	M527183-13
Nut	MS51967-5
Snap hook	M43770/6—M1ZE1



TYPE I



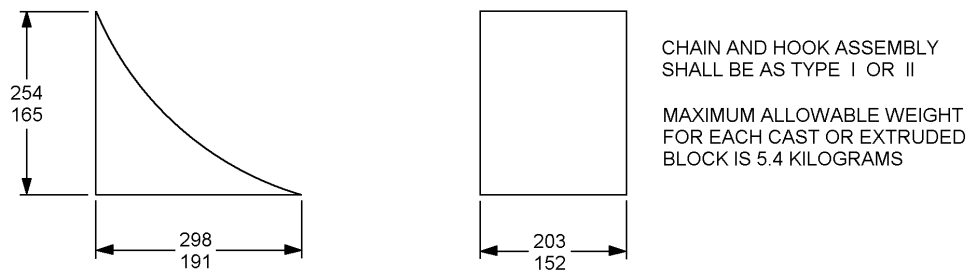
TYPE II



mm	Inches	mm	Inches
3	0.118	152	5.98
6	0.236	165	6.50
13	0.512	191	7.52
15	0.591	203	7.99
25.4	0.999	222	8.74
38	1.496	241	9.49
95.3	3.752	254	9.99
117	4.606	298	11.73

FIGURE 1. Chock, wheel

## A-A-52475B



TYPE III

Cross reference		
Wheel chock type	PIN number	Former MS PIN
Type I	A52475-1	MS52127-3
Type II	A52475-2	None
Type III	A52475-3	None

## NOTES:

1. Type III chock block shall have one surface (that would normally be in contact with the tire) that has a curvature to match one of the mid-range current commercial truck tire sizes/diameters.
2. Chock block shall be furnished as a complete painted assembly (with chain attached, etc.).
3. Radius or chamfer all outer edges.
4. 8 mm bolts shall be used to assemble type I wheel chocks (optional bolt 5/16 x 18 UNC 2A).
5. Unless otherwise specified, dimensions are in millimeters. Tolerances are  $\pm 6$  mm (0.236 in).

FIGURE 1. Chock, wheel - Continued.

A-A-52475B

7.10 Key words.

Camouflage  
Non-ferrous metal  
Rubber  
Sparkproof  
Wood

7.11 Changes from previous issue. Marginal notations are not used in this revision to identify changes with respect to the previous issue due to the extensiveness of the changes

MILITARY INTERESTS

Custodians:

Army - AT  
Navy - SH  
Air Force - 99  
DLA - CC

Review activities:

Army-AR  
Navy – MC, SA,YD  
Air Force - 71

CIVIL AGENCY COORDINATING ACTIVITY:

GSA - FAS

Preparing activity:

DLA - CC

Project 2540-2012-003

NOTE: The activities listed above were interested in this document as of the date of this document. Since organizations and responsibilities can change, you should verify the currency of the information above using the ASSIST Online database at <https://assist.dla.mil>.