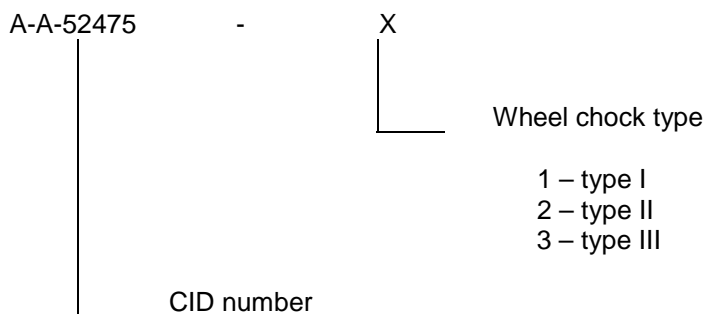


## CHOCK, WHEEL

1. **SCOPE.** This CID covers wheel chocks used for truck and trailer stabilization and safety.
2. **CLASSIFICATION/PART OR IDENTIFICATION NUMBER (PIN).** This CID uses a classification system which is included in the PIN as shown in the following example (see 7.1).



Type I - Wood chock.  
Type II - Rubber or wood chock.  
Type III - Cast or extruded non—ferrous metal chock.

FSC 2540

## A-A-52475A

## 3. SALIENT CHARACTERISTICS.

3.1 Material. Unless otherwise specified herein, the materials used shall be in accordance with the manufacturer's materials specification for wheel chocks. The use of recovered material made in compliance with regulatory requirements is acceptable providing all requirements of this CID are met (see 3.2.3e).

3.2 Wheel chock material.

3.2.1 Type I wheel chocks. Type I wheel chocks shall be made of laminated hardwood (maple, red or white oak) with 32 mm (1.259 in) minimum thickness.

3.2.2 Type II wheel chocks. Type II wheel chocks shall be made of vulcanized or synthetic rubber or laminated hardwood with 32 mm (1.259 in) minimum thickness. Industry alternate materials, such as, laminated rubber pads, fabric-reinforced rubber compounds, extruded rubber compounds, molded urethane, etc. may also be used.

3.2.3 Type III wheel chocks. Type III wheel chocks shall be made of cast or extruded non-ferrous metal, such as, aluminum, which is "sparkproof".

- a. Chain assembly. The chain assembly shall be fabricated from the following components:
  1. Steel chain 2286 mm (89.999 in) long (minimum) size 4.76 mm (0.187 in) (nominal).
  2. Steel lap link size 4.76 mm (0.187 in) (nominal).
- b. Eye bolt. The eye bolt shall be fabricated from wrought iron or steel.
- c. Snap hook. The snap hook (32 mm (1.259 in) in size) shall be made of ungalvanized malleable iron.
- d. Design and construction. The wheel chocks shall be designed and constructed in accordance with figure 1.
- e. Finish treatment. Wheel chocks shall be cleaned treated and painted in accordance with FED-STD-595. Finish color shall be camouflage green 383. The paint system applies to all mating wood surfaces, all exterior wood surfaces, all ferrous part surfaces, and all aluminum part surfaces. Rubber and rubber compounds shall not be painted and shall be molded color black. All ferrous metal parts shall be zinc plated in accordance with ASTM A153 before painting.
- f. Identification markings. Identification markings shall be permanent and legible and shall include, as a minimum, the manufacturer's CAGE code and part number, and the PIN (see section 2).
- g. Special marking. The marking shall appear on the flat end of the wheel chock.

4. REGULATORY REQUIREMENTS. The offeror/contractor is encouraged to use recovered materials to the maximum extent practicable, in accordance with paragraph 23.403 of the Federal Acquisition Regulation (FAR).

## 5. PRODUCT CONFORMANCE PROVISIONS

5.1 Responsibility for inspection. The contractor is responsible for the performance of all inspections (examinations and tests).

## A-A-52475A

5.2 Contractor certification. The contractor shall certify and maintain substantiating evidence that the product offered meets the salient characteristics of this CID and that the product conforms to the producers own drawings, specifications, workmanship standards, and quality assurance practices. Items with known defects shall not be submitted for Government acceptance. The Government reserves the right to require proof of such conformance prior to the first delivery and thereafter as may be otherwise provided for under the provisions of the contract.

6. PACKAGING. Preservation, packing, and marking shall be as specified in the contract or order.

7. NOTES.

7.1 PIN. The PIN should be used for Government purposes to buy commercial products to this CID. See section 2 for PIN format example.

7.2 Addresses for obtaining copies of referenced documents.

7.2.1 Federal Standard. Copies of FED STD-595 "Treatment and painting of material" are available from the Navy Publication and Printing Service Office Standardization Documents Order Desk, Bldg 4D, 700 Robbins Avenue, Philadelphia, PA 19111-5094.

7.2.2 Non-Government publication. Copies of ASTM A153 "Zinc Coating (Hot Dip) on Iron and Steel Hardware" are available from the ASTM International, P.O. Box C700, 100 Barr Harbor Drive, West Conshohocken, PA 19428-2959.

7.3 Ordering data. The contract or order should specify the following:

- a. Title, number, and date of this CID.
- b. Issue of DODISS to be cited in the solicitation and, if required, the specific issue of individual documents referenced.
- c. Type of wheel chock, PIN and quantity required.
- d. Selection of applicable level and packaging requirements.

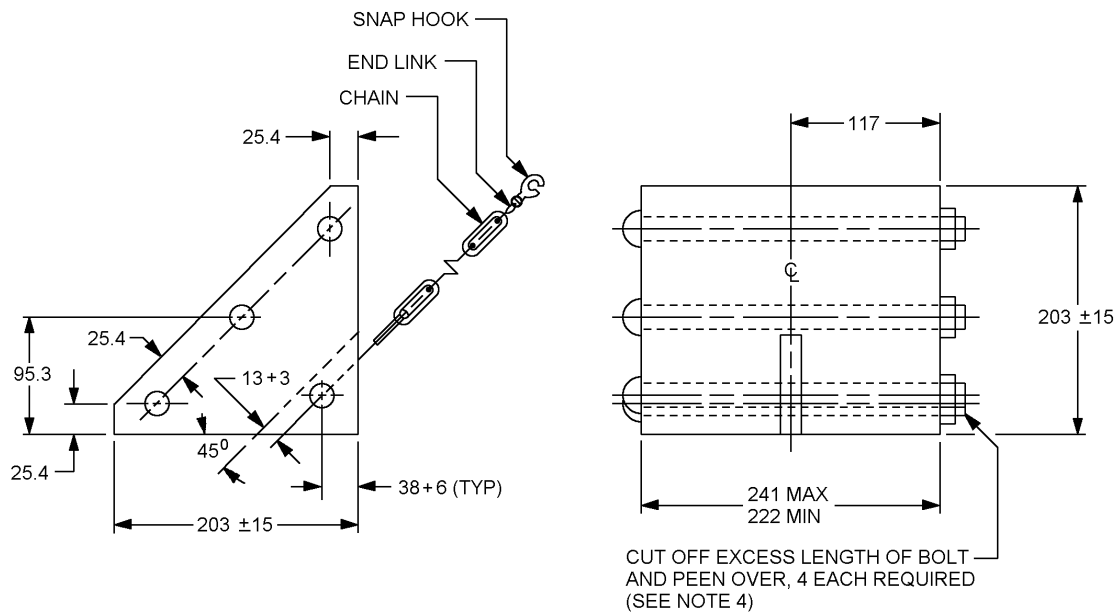
7.4 Replacement parts. The following table I is a list of inch-pound replacement parts for the wheel chock assembly.

TABLE I. Replacement parts.

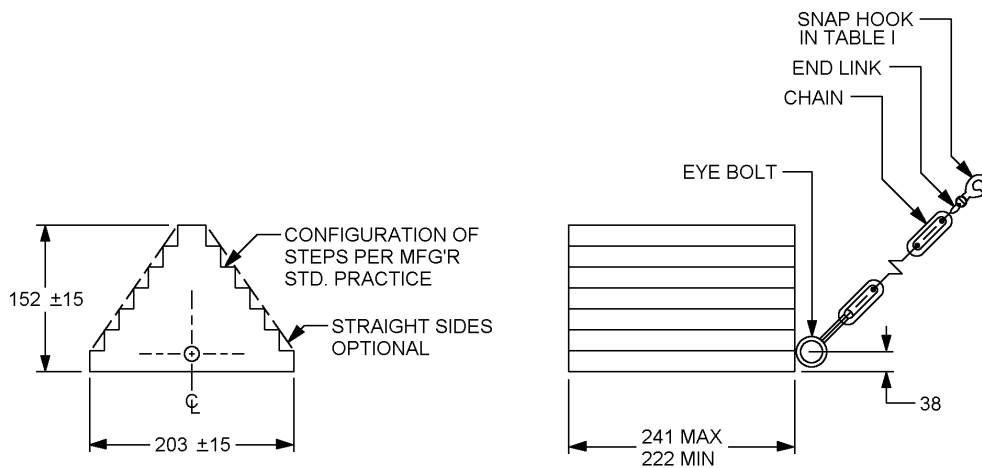
Name of part	Replacement PIN
Carriage bolt	MS3575 1-65
Flat washer	M527183-13
Nut	MS51967-5
Snap hook	M43770/6—M1ZE1

7.5 Government users. To acquire information on obtaining these wheel chocks from the Government inventory system, please contact Defense Supply Center, Columbus, ATTN: DSCC Call Center (DSCC-NAB), Post Office Box 3990, Columbus, OH 43216-5000 or telephone (614) 692-2271 or -3191.

## A-A-52475A



TYPE I

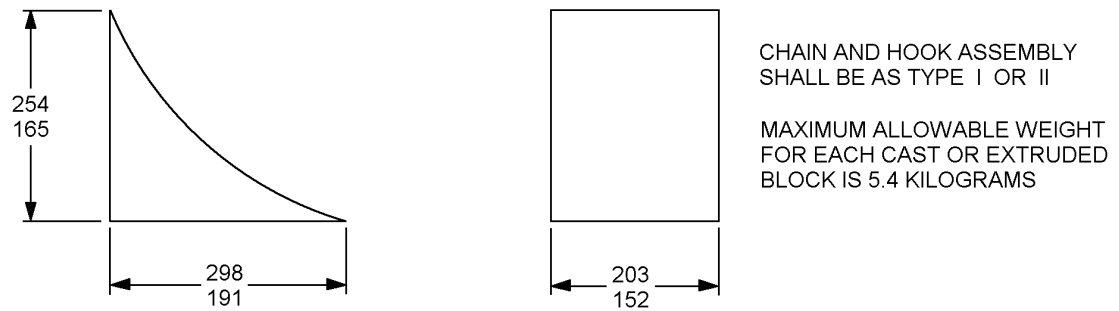


TYPE II

mm	Inches	mm	Inches
3	0.118	95.3	3.752
6	0.236	117	4.606
13	0.512	152	5.984
15	0.591	203	7.992
25.4	0.999	222	8.740
38	1.496	241	9.488

FIGURE 1. Chock, wheel.

## A-A-52475A

TYPE III

mm	Inches
152	5.984
165	6.496
191	7.519
203	7.992
254	9.999
298	11.732

Cross reference		
Wheel chock type	PIN number	Former MS PIN
Type I	A52475-1	MS52127-3
Type II	A52475-2	None
Type III	A52475-3	None

## NOTES:

1. Type III chock block shall have one surface (that would normally be in contact with the tire) that has a curvature to match one of the mid-range current commercial truck tire sizes/diameters.
2. Chock block shall be furnished as a complete painted assembly (with chain attached, etc.).
3. Radius or chamfer all outer edges.
4. 8 mm bolts shall be used to assemble type I wheel chocks (optional bolt 5/16 x 18 UNC 2A).
5. Unless otherwise specified, dimensions are in millimeters. Tolerances are  $\pm 6$  mm (0.236 in).

FIGURE 1. Chock, wheel - Continued.

A-A-52475A

7.6 Key words.

Camouflage  
Non-ferrous metal  
Rubber  
Sparkproof  
Wood

MILITARY INTERESTS:

CIVIL AGENCY COORDINATING ACTIVITY:  
GSA - FSS

Custodians:

Army – AT  
Navy – SH  
DLA – CC

Preparing activity:  
DLA - CC

Review activity:

Navy – SA

(Project 2540-0465-000)