

INCH-POUND

A-A-55507/1C

28 July 2015

SUPERSEDING

A-A-55507/1B

2 February 2004

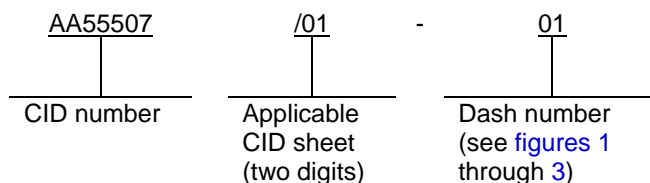
COMMERCIAL ITEM DESCRIPTION  
SPECIFICATION SHEET

CLIP, ELECTRICAL, FUSE,  
30 AND 60 AMPERE, FOR FUSE DIAMETERS 1/4 INCH THRU 13/16 INCH

The General Services Administration has authorized the use of this  
commercial item description for all federal agencies.

The complete requirements for procuring the 30 and 60 ampere electrical fuse clips described herein shall consist of this document and the issue in effect of CID [A-A-55507](#). This document supersedes military specification MIL-F-21346/1.

CLASSIFICATION OR PART IDENTIFICATION NUMBER (PIN). This commercial item description (CID) specification sheet uses a classification system which is included in the PIN as shown in the following example (see [NOTES](#)).



SALIENT CHARACTERISTICS.

Interface and physical dimensions. Electrical fuse clips supplied to this CID shall be as specified herein (see [figures 1](#) through [3](#)).

Materials. Materials are as follows (see also [figures 1](#) through [3](#)):

- A: Copper clad steel consisting of a core, representing 80 ±1 percent of the sheet thickness, SAE grade 1065. This core shall be located between two layers of oxygen-free copper. Each copper layer shall represent 10 ±1 percent of the total sheet thickness before plating.
- B: Copper-beryllium alloy in accordance with [ASTM-B194](#).
- C: Phosphor bronze in accordance with [ASTM-B139/B139M](#).
- D: Spring brass in accordance with [ASTM-B36/B36M](#).

Beneficial comments, recommendations, additions, deletions, clarifications, etc., and any data that may improve this document should be sent to: DLA Land and Maritime, ATTN: VAT, P.O. Box 3990, Columbus OH 43218-3990, or email ([relay@dla.mil](mailto:relay@dla.mil)). Since contact information can change you may want to verify the currency of the address information using the ASSIST Online database at <https://assist.dla.mil/>.

AMSC N/A

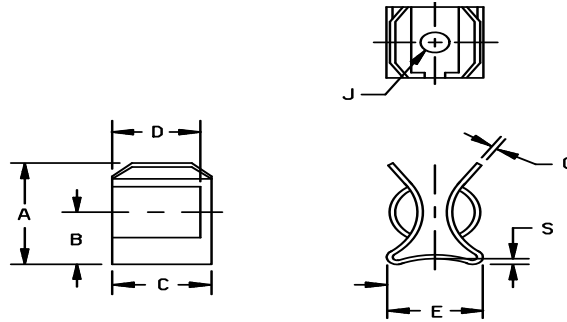
FSC 5999



#### A-A-55507/1C

Finish: Finishes are based on the material and the current rating of the clips. Finish for clips made of materials B or C shall be bright alloy plate for 30-ampere ratings, and silver plate for 60-ampere rating. Clips made of material A shall receive a copper flash initial plating followed by a final finish of either bright alloy plate, silver plate, or hot tin dip. Tin finishes must have a lead content of at least 3 percent. The thickness of all plated finishes shall be at least .0002 inch.

Marking. As specified in [A-A-55507](#).



CONFIGURATION A

PIN AA55507/ 01-	Material	Nominal fuse diameter	Maximum current rating (A)	Dimensions (see notes)								Applicable fuse style per MIL-PRF-15160
				A max	B min	C	D min	E max	G	J (dia) max	S max	
01	B	.250 (6.35)	30	.52 (13.2)	.23 (5.8)	.31 (7.9)	.23 (5.8)	.34 (8.6)	.020 (0.51)	.136 (3.45)	.014 (0.36)	F01, F02, F03
02	B	.281 (7.14)		.58 (14.7)	.31 (7.9)	.41 (10.4)	.34 (8.6)	.43 (10.9)				.176 (4.47)
03	B	.406 (10.31)		.80 (20.3)	.45 (11.4)	.44 (11.2)	.36 (9.1)	.53 (13.5)	.0200 ±.0025 (0.508 ±0.064)	.201 (5.11)	.014 (0.36)	F07, F09, F10, F27, F28, F60
04	A	.406 (10.31)		.47 (11.9)								
05	B	.563 (14.30)	60	.97 (24.6)	.52 (13.2)	.59 (15.0)	.49 (12.4)	.66 (16.8)	.028 (0.71)	.224 (5.69)	.020 (0.51)	F15, F61
06	A			1.31 (33.3)	.76 (19.3)	.74 (18.8)	.61 (15.5)	.90 (22.9)	.045 (1.14)			.270 (6.86)
07	B	.813 (20.65)	60	1.31 (33.3)	.76 (19.3)	.74 (18.8)	.61 (15.5)	.90 (22.9)	.045 (1.14)	.270 (6.86)	F16, F29, F30, F62	
08	A											

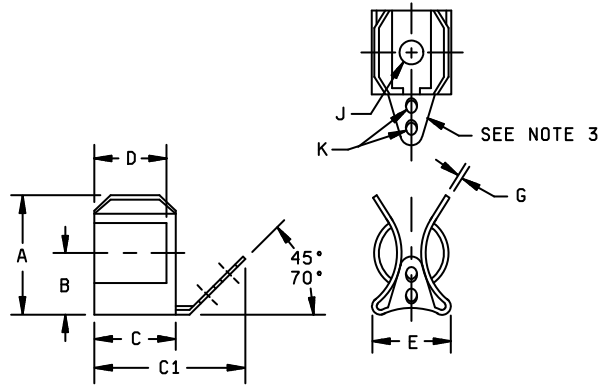
NOTES:

1. Dimensions are in inches. Millimeters are in parentheses and are provided for general information only.
2. Unless otherwise specified, tolerances are ±.02 (0.5 mm) for two place decimals and ±.005 (0.13 mm) for three place decimals.

Figure 1. Configuration and dimensions, configuration A.

ω

A-A-55507/1C



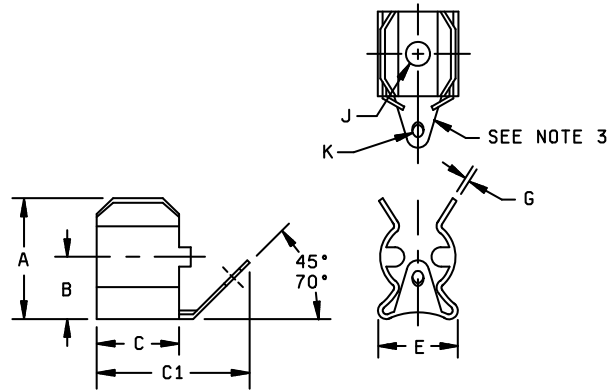
**CONFIGURATION B**

PIN AA55507/ 01-	Material	Nominal fuse diameter	Maximum current rating (A)	Dimensions (see notes)									Applicable fuse style per MIL-PRF-15160
				A max	B min	C	C1 max	D min	E max	G	J (dia)	K (dia)	
09	B	.250 (6.35)	30	.50 (12.7)	.23 (5.8)	.31 (7.9)	.63 (16.0)	.23 (5.8)	.34 (8.6)	.020 (0.51)	.131 (3.33)	.093 (2.36)	F01, F02, F03
10	B	.406 (10.31)	30	.80 (20.3)	.45 (11.2)	.44 (11.2)	.78 (19.8)	.36 (9.1)	.51 (13.0)	.0200 (0.508 ±0.064)	.196 (4.98)	.093 (2.36)	F07, F09, F10, F27, F28, F60

**NOTES:**

1. Dimensions are in inches. Millimeters are in parentheses and are provided for general information only.
2. Unless otherwise specified, tolerances are ±.02 (0.5 mm) for two place decimals and ±.005 (0.13 mm) for three place decimals.
3. Solder lug terminal shall be formed integral with the fuse clip.

Figure 2. Configuration and dimensions, configuration B.



**CONFIGURATION C**

5

PIN AA55507/ 01-	Material	Nominal fuse diameter	Maximum current rating (A)	Dimensions (see notes)								Applicable fuse style per MIL-PRF- 15160
				A max.	B min.	C	C1 max..	E max..	G	J (dia.)	K	
11	B	.250 (6.35)	30	.50 (12.7)	.23 (5.8)	.31 (7.9)	.60 (15.2)	.34 (8.6)	.020 (0.51)	.131 (3.33)	.09 x .16 (2.29 x 4.06)	F01, F02, F03

**NOTES:**

1. Dimensions are in inches. Millimeters are in parentheses and are provided for general information only.
2. Unless otherwise specified, tolerances are  $\pm 0.02$  (0.5 mm) for two place decimals and  $\pm 0.005$  (0.13 mm) for three place decimals.
3. Solder lug terminal shall be formed integral with the fuse clip.

Figure 3. Configurations and dimensions, configuration C.

## A-A-55507/1C

## NOTES.

PIN. The PIN should be used for Government purposes to buy commercial products to this CID. See classification information for PIN format example.

| Source of documents.

## | DEPARTMENT OF DEFENSE SPECIFICATION

| [MIL-PRF-15160](#) Fuses, Instrument, Power, and Telephone

## | COMMERCIAL ITEM DESCRIPTION

| [A-A-55507](#) - Clip, Electrical, Fuse, General Requirements(Copies of this document are available online at <http://quicksearch.dla.mil>.)

## | ASTM INTERNATIONAL

| [ASTM-B194](#) - Copper-Beryllium Alloy Plate, Sheet, Strip, and Rolled Bar.| [ASTM-B139/B139M](#) - Phosphor Bronze Rod, Bar, and Shapes.| [ASTM-B36 /B36M](#) - Plate, Brass, Sheet, Strip, and Rolled Bar(Copies of these documents are available online at [www.astm.org](http://www.astm.org).)

Commercial products. As part of the market analysis and research effort, this CID was coordinated with the following manufacturers of commercial products. At the time of CID preparation and coordination, these manufacturers were known to have commercial products that would meet the requirements of this CID. (NOTE: This information should not be considered as a list of approved manufacturers or be used to restrict procurement to only the manufacturers shown.)

MFR's CAGE

75915

MFR's name and address

Littelfuse Inc.  
800 E. Northwest Highway  
Des Plaines, IL 60016-3096  
Phone: (847) 824-1188  
FAX: (847) 824-9476  
Manufacturer's MAIL [lfelectr@interaccess.com](mailto:lfelectr@interaccess.com)  
Manufacturer's URL - <http://www.littlefuse.com>

84613

FIC Corporation  
12216 Parklawn Drive  
Rockville, MD 20852-2046  
Phone: (800) 638-6594  
FAX: (301) 881-0530  
Manufacturer's E-MAIL - [ficcorp@ficcorp.com](mailto:ficcorp@ficcorp.com)  
Manufacturer's URL - <http://www.ficcorp.com>

## A-A-55507/1C

Part number (P/N) supersession data. These CID part numbers supersede the following MFR's P/N's as shown. This information is being provided to assist in reducing proliferation in the Government inventory system.

TABLE I. P/N supersession data.

Dash number (see table I) AA55507/01-	MFR's CAGE	MFR's P/N <u>1/</u>	MFR's CAGE	MFR's P/N <u>1/</u>
001	75915	121001		
002				
003	75915	125001		
004			84613	FC21CF
005	75915	127001	84613	FC21DN
006			84613	FC21DF
007	75915	129001		
008				
009				
010				
011	75915	121004		

1/ The manufacturer's P/N shall not be used for procurement to the requirements of this CID. At the time of preparation of this CID, the aforementioned commercial products were reviewed and could be replaced by the CID PIN shown. For actual part marking requirements see the marking paragraph.

## A-A-55507/1C

TABLE II. Supersession information for MIL-F-21346/1.

Superseded PIN M21346/1-	Superseded type designation per MIL-F-21346/1.	Replacement PIN AA55507/01-
01	FC21AN	01
02	FC21BN	02
03	FC21CN	03
04	FC21CF	04
05	FC21DN	05
06	FC21DF	06
07	FC21EN	07
08	FC21EF	08
09	FC22AN	09
10	FC22BN	02 <a href="#">1/</a>
11	FC22CN	10
12	FC22DN	05 <a href="#">1/</a>
13	FC22EN	07 <a href="#">1/</a>
14	FC23AN	11
15	FC23BN	02 <a href="#">1/</a>
16	FC23CN	10
17	FC23DN	05 <a href="#">1/</a>
18	FC23EN	07 <a href="#">1/</a>
19	FC25AN	No replacement
20	FC25BN	No replacement

[1/](#) This replacement PIN is provided without a solder terminal, and therefore is not directly interchangeable with the superseded PIN.

**Government users.** To acquire information on obtaining these 15 and 30 ampere electrical P.C. board fuse clip from the Government inventory system, contact DLA Land and Maritime, ATTN: (FM), P.O. Box 3990, Columbus, OH 43218-3990, or telephone (614) 692-3677.

**Referenced documents.** In addition to [A-A-55507](#), this document references the following:

[MIL-PRF-15160](#) [ASTM-B194](#) [ASTM-B139/B139M](#) [ASTM-B36/B36M](#)

**Changes from previous issue.** The margins of this CID are marked with a vertical line to indicate where changes from the previous issue were made. This was done as a convenience only and the Government assumes no liability whatsoever for any inaccuracies in these notations. Bidders and contractors are cautioned to evaluate the requirements of this document based on the entire content irrespective of the marginal notations and relationship to the last previous issue.



A-A-55507/1C

MILITARY INTERESTS:

Custodians:

Army - CR  
Navy - SH  
Air Force - 85  
DLA - CC

CIVIL AGENCY COORDINATING ACTIVITY:

GSA - 7FXE

Preparing Activity:

DLA-CC

Project 5999-2015-005

NOTE: The activities listed above were interested in this document as of the date of this document. Since organizations and responsibilities can change, you should verify the currency of the information above using the ASSIST Online database at <https://assist.dla.mil/>.