

NOTICE OF  
VALIDATION

INCH-POUND

A-A-1923A  
NOTICE 2  
28 June 2006

COMMERCIAL ITEM DESCRIPTIONS (CIDS)

Shield Expansion (Lag, Machine and Externally Threaded Wedge  
Bolt Anchors)

A-A-1923A, dated 21 August 2001, has been reviewed and  
determined to be valid for use in acquisition.

**Custodians:**

Army - AR  
Navy - YD  
Air Force - 99

**Preparing Activity:**

DLA - IS

**NOTE:** The activities above were interested in this document as  
of the date of this document. Since organizations and  
responsibilities can change, you should verify the currency of  
the information above using the ASSIST Online database at  
[assist.daps.dla.mil](http://assist.daps.dla.mil).

NOTICE OF  
VALIDATION

INCH-POUND

A-A-1923A  
NOTICE 1  
21 August 2001

COMMERCIAL ITEM DESCRIPTIONS (CIDS)

SHIELD EXPANSION (LAG, MACHINE AND EXTERNALLY THREADED WEDGE  
BOLT ANCHORS)

A-A-1923A, dated 18 July 1995, has been reviewed and determined  
to be valid for use in acquisition.

**Custodians:**

Army - AR  
Navy - YD  
Air Force - 99

**Preparing activity:**

DLA - IS

AMSC N/A

FSC 5340

**DISTRIBUTION STATEMENT A:** Approved for public release; distribution  
is unlimited.

[INCH POUND]  
 A-A-1923A  
 18 JULY 1995  
 SUPERSEDING  
 A-A-1923  
 2 May 1983

## COMMERCIAL ITEM DESCRIPTION

### SHIELD EXPANSION (LAG, MACHINE AND EXTERNALLY THREADED WEDGE BOLT ANCHORS)

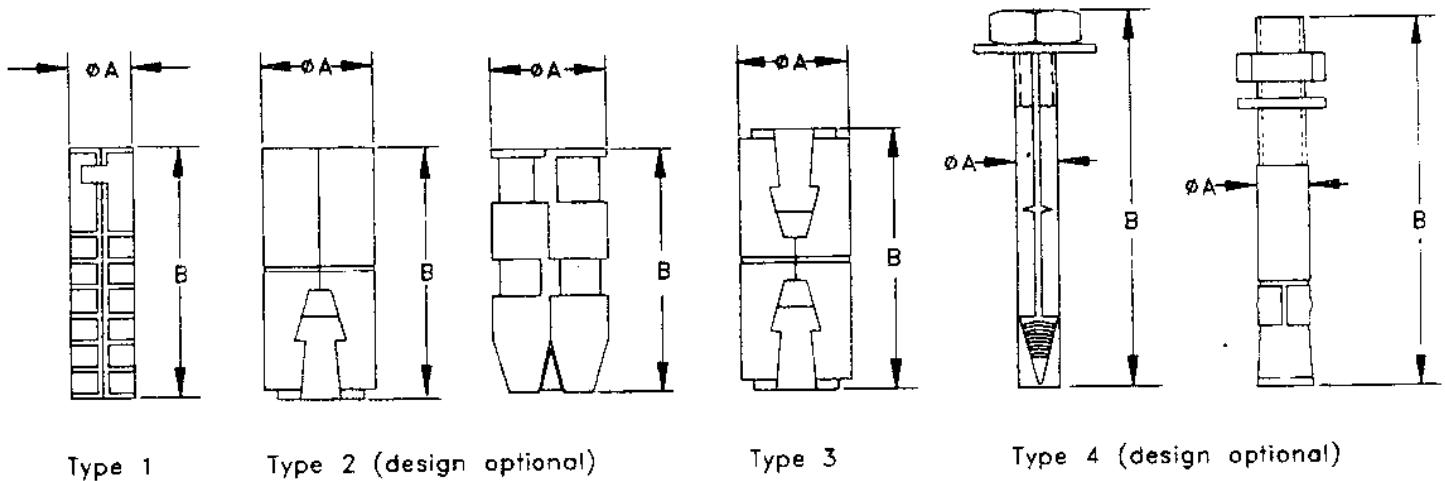
The General Services Administration has authorized the use of this commercial item description for all federal agencies.

1. SCOPE. This Commercial Item Description (CID) covers the following types of bolt anchors for use in attaching equipment and fixtures to masonry:

- Type 1 - Lag Bolt Anchors (Table 1)
- Type 2 - Machine Bolt Anchors, single - end expansion (Table II)
- Type 3 - Machine Bolt Anchors, double - end expansion (Table II)
- Type 4 - Externally Threaded Wedge Bolt Anchors (Table III)

## 2. SALIENT CHARACTERISTICS.

### 2.1 Bolt Anchor Configurations.



Beneficial comments, recommendations, additions, deletions, clarifications, etc., and data which may improve this document should be sent to: Defense Industrial Supply Center. Attn: DISC-ECB, 700 Robbins Avenue, Philadelphia, PA 19111-5096.

## A-A-1923A

TABLE I. Type 1, DASH NUMBERS AND DIMENSIONS

Dash Numbers	Size, Diameter of Log Bolt	Anchor Dimensions		Average Ultimate 1.2 (Lbs) Capacity (Minimum)
		Outside Diameter A (Minimum)	Shield Length B (Minimum)	
Short Shields				
101	.250	.500	1.000	400
102	.3125	.500	1.000	800
103	.375	.625	1.750	1300
104	.500	.750	2.000	2100
105	.625	.875	2.000	2500
106	.750	1.000	2.000	3000
Long Shields				
111	.250	.500	1.500	500
112	.3125	.500	1.750	1000
113	.375	.625	2.500	1600
114	.500	.750	3.000	2800
115	.625	.875	3.375	3500
116	.750	1.000	3.500	4000

1. Recommended safe working load is one-fourth of the average ultimate capacity.
2. Test in accordance with ASTM E488.

TABLE II. Type 2 and 3, DASH NUMBERS AND DIMENSIONS

Dash Numbers	Thread Size UNC-2B	Anchor Dimensions		Average Ultimate 1.2 (Lbs) Capacity (Minimum)
		Diameter A (Minimum)	Length B (Minimum)	
Type 2				
201	.250-20	.500	1.250	800
202	.3125-18	.500	1.375	1100
203	.375-16	.625	1.500	1450
204	.500-13	.750	2.000	1850
205	.625-11	.875	2.500	2400
206	.750-10	1.000	2.750	3000
Type 3				
301	.250-20	.500	1.250	1100
302	.3125-18	.625	1.625	1450
303	.375-16	.625	2.000	1750
304	.500-13	.875	2.250	2200
305	.625-11	1.000	2.750	3250
306	.750-10	1.125	3.250	4600
307	.875-9	1.500	4.000	5850
308	1.000-8	1.625	4.250	6700

1. Recommended safe working load is one-fourth of the average ultimate capacity.
2. Test in accordance with ASTM E488.

A-A-1923A

TABLE III. Type 4, DASH NUMBERS AND DIMENSIONS

Dash Numbers	Thread Size UNC-2B	Anchor Dimensions		Recommended Minimum Imbedment	Average 1.2 Ultimate Capacity (Lbs) (Minimum)
		Diameter A (Minimum)	Length B (Minimum)		
401	.250-20	.250	1.750	1.125	1450
402	.250-20	.250	2.750	1.250	1500
403	.250-20	.250	3.000	1.250	1500
404	.3125-18	.3125	2.000	1.250	1900
405	.3125-18	.3125	3.000	1.250	1900
406	.375-16	.375	2.000	1.250	3200
407	.375-16	.375	2.750	1.500	3689
408	.375-16	.375	3.500	1.500	3689
409	.500-13	.500	2.750	2.000	4200
410	.500-13	.500	3.500	2.250	5065
411	.500-13	.500	5.00	2.250	5065
412	.500-13	.500	6.00	2.250	5065
413	.625-11	.625	6.00	3.500	10192
414	.750-10	.750	5.00	3.500	17194
415	.750-10	.750	6.00	3.500	17194
416	.750-10	.750	7.00	3.500	17194
417	.875-9	.875	8.00	4.500	19000

1. Recommended safe working load is one-fourth of the average ultimate capacity.
2. Test in accordance with ASTM E488.

## 2.2 MATERIAL:

- 2.2.1 Types 1, 2 and 3 bolt anchors shall be made of zinc alloy.
- 2.2.2 Type 4 bolt anchors shall be made of steel and zinc plated in accordance with ASTM B633, Type III, SC1.
- 2.2.3 Type 4 bolt anchor nuts shall be in accordance with ANSI/ASME 818.2.2.
- 2.2.4 Type 4 bolt anchor washers shall be in accordance with ANSI/ASME B18.22.1.

A-A-1923A

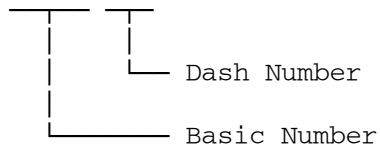
## 3. QUALITY CONFORMANCE PROVISIONS

- 3.1 The suppliers shall be responsible for those in process controls and inspections necessary to supply a product consistently conforming to the requirements of this document.
- 3.2 Upon request, the supplier will certify with documented test/inspection evidence, that the parts supplied meet the requirements of this document.

## 4. NOTES

- 4.1 Unless otherwise specified, all dimensions are in inches.
- 4.2 Bolts are not included with Types 1, 2 and 3 bolt anchors unless specified in purchasing contract.
- 4.3 Packaging shall be in accordance with ASTM D3951.
- 4.4 The part identification number (PIN) shall consist of the basic commercial item description number followed by a dash number from Table I, II, or III.

Example: A1923-101



## MILITARY INTERESTS:

## Custodians:

Army - AR  
 Navy - YD  
 Air Force - 99

## Preparing activity:

DLA - IS  
 (Project No. 5340-2225)