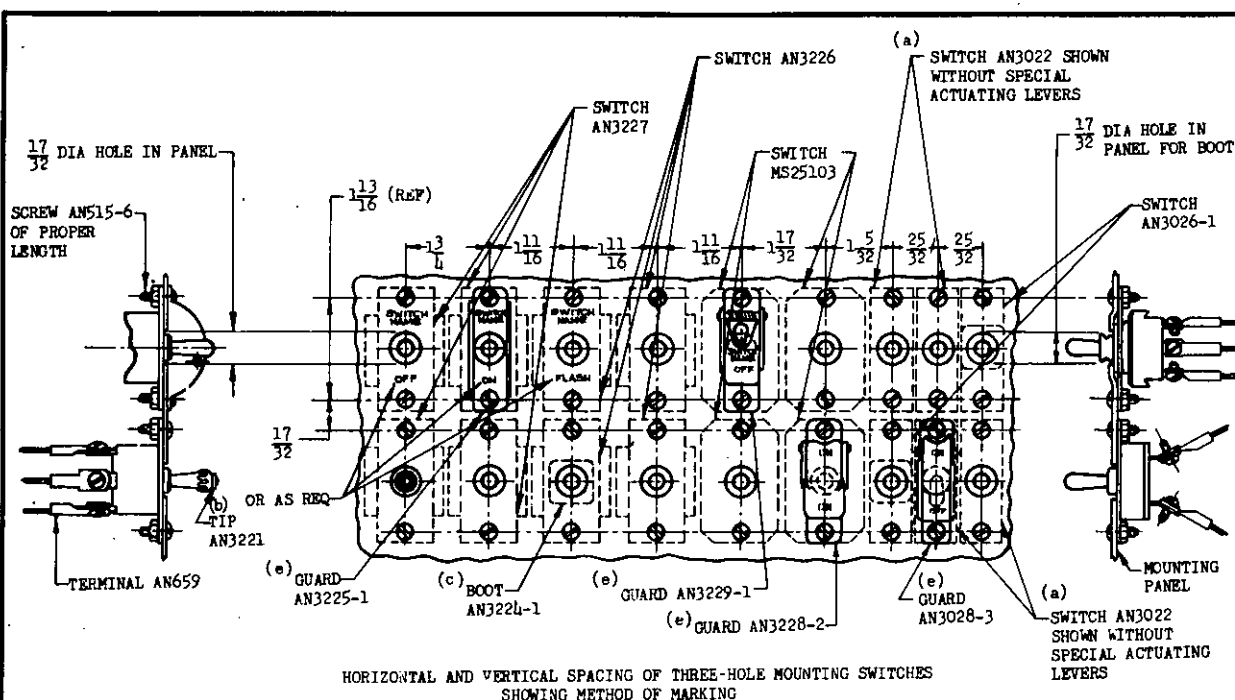
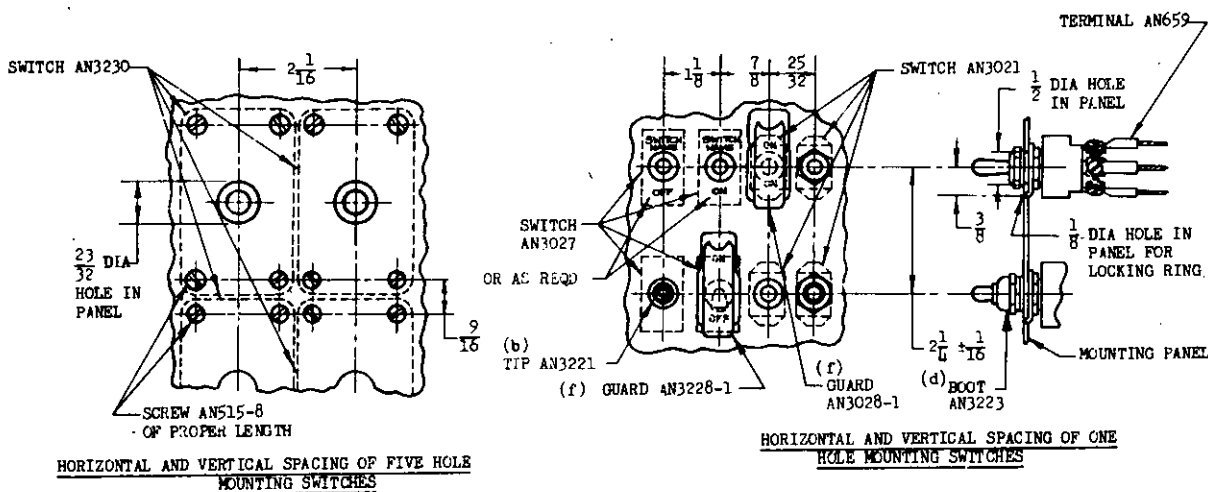


NOTE: This drawing was approved by Joint action of the Air Force and Navy Departments as the Air Force-Navy standard for this product. This drawing supersedes all subsequent standard drawings for the same product and shall become effective for the procurement of associated supplies, or for use in new designs, not later than 6 months after the latest date of approval shown.



HORIZONTAL AND VERTICAL SPACING OF THREE-HOLE MOUNTING SWITCHES  
SHOWING METHOD OF MARKING



### HORIZONTAL AND VERTICAL SPACING OF FIVE HOLE MOUNTING SWITCHES

### HORIZONTAL AND VERTICAL SPACING OF ONE HOLE MOUNTING SWITCHES

- (a) FOR SPACING OF SWITCHES HAVING SPECIAL ACTUATING LEVERS REFER TO DRAWING AN3022 FOR WIDTHS OF LEVERS.
- (b) TIP AN3221 MAY BE USED WITH SWITCHES AN3022, AN3023, AN3026, AN3226, AN3227, AN3021 OR AN3027.
- (c) BOOT AN3224-2 MAY BE USED WITH SWITCHES AN3022, AN3023, AN3226 OR AN3227.
- (d) BOOT AN3223 MAY BE USED WITH SWITCHES AN3021 OR AN3027.
- (e) GUARDS AN3028-3, AN3228-2, AN3229-1 AND AN3225-1 MAY BE USED WITH SWITCHES AN3022, AN3023, AN3226 OR AN3227.
- (f) GUARDS AN3028-1 AND AN3228-1 MAY BE USED WITH SWITCHES AN3021 OR AN3027.

LETTERING ON THE PANELS OR NAMEPLATES SHALL BE RECESSED AND FILLED WITH WHITE ENAMEL CONFORMING TO SPECIFICATION MIL-E-5556. RECESSED LETTERING ACCOMPLISHED BY ENGRAVING OR CUTTING THROUGH THE BLACK LAYER OF LAMINATED PLASTICS TO EXPOSE A WHITE LAYER IS ACCEPTABLE. THE WORDING SHALL BE CLEARLY AND CONCISELY INDICATIVE OF FUNCTION. THE TYPE CHARACTERS SHALL CONFORM TO THE AIR FORCE -NAVY AERONAUTICAL DESIGN STANDARD FOR NUMERALS AND LETTERS AS SHOWN BY AND10400, OR MAY BE COMPRESSED COMMERCIAL GOTHIC. THE HEIGHT OF CHARACTERS SHALL BE 1/8 INCH.

REMOVE ALL ROUGH PROJECTIONS FROM HEADS OF SCREWS.  
FOR DEFINITION AND APPLICATION OF DRAWING STATUS NOTES, SEE ANA BULLETIN NO.337.  
ARRANGEMENT OF SWITCHES, GUARDS, ETC AS SHOWN ON THIS DRAWING IS NOT RESTRICTIVE.

DIMENSIONS IN INCHES. UNLESS OTHERWISE SPECIFIED, TOLERANCES: FRACTIONS  $\pm 1/64$ .

INACTIVE FOR DESIGN AFTER 7 OCTOBER 1957.  
USE STANDARD MS33630

# AIR FORCE-NAVY AERONAUTICAL DESIGN STANDARD

## SWITCH - TOGGLE, INSTALLATION OF

**CANCELED AFTER 14 APRIL  
1981. NO SUPERSEDING  
STANDARD**

ANDI0453

**NOT A PART NUMBER**

SUPERSEDES BUAEER DRAWING 8-104.